

ANNEXE 9

Labo SM inc.

LEGEND

STRATIGRAPHIC SYMBOLS

A SAND
 B UPPER SAND
 C STRATIFIED CLAYEY DEPOSIT
 D UPPER SILTY SAND
 E COMPACT TO VERY DENSE EXCELLENT QUALITY SAND
 F WATER LEVEL

ISOPACHS CONTOUR

2000 INVESTIGATION BY SM
 2004 & 2005 QUALIUS
 2004 AHC
 2004 AHC
 1976 INVESTIGATION BY JAMES & MOORES
 1973 COLDER
 1955 GEOCON

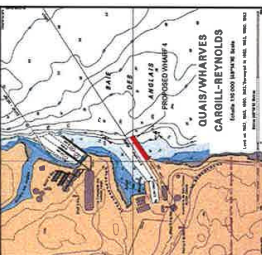
SYMBOLS (Investigation)

● TERRATECH 1984
 ● GECON 1955
 ● JAMES & MOORES 1970
 ● JAMES & MOORES 1973
 ● SHC/TERRATECH 1984
 ● QUALIUS 2005

PROPOSED LOCATION
 PROPOSED LOCATION
 CROSSED LINE
 CROSS SECTION

1. THE SURVEY DATUM IS BASED ON THE FOLLOWING GEODENSIC REFERENCE MARK:
 - BENCH MARK 15250 256.076 MGS
 - BENCH MARK 15251 256.076 MGS
 - MD 83 (NON CBS), 3" 4th ZONE 6
 - THE GEODENSIC DATUM, LOCAL 1, 1985 BENCH

2. ALL ELEVATIONS SHOWN ON THIS DRAWING ARE CHART ELEVATIONS, UNLESS OTHERWISE NOTED.



NO.	DESCRIPTION	DRAWN BY	CHECKED BY	DATE
1	PRELIMINARY	SM	SM	02/22/05
2	FINAL	SM	SM	02/22/05



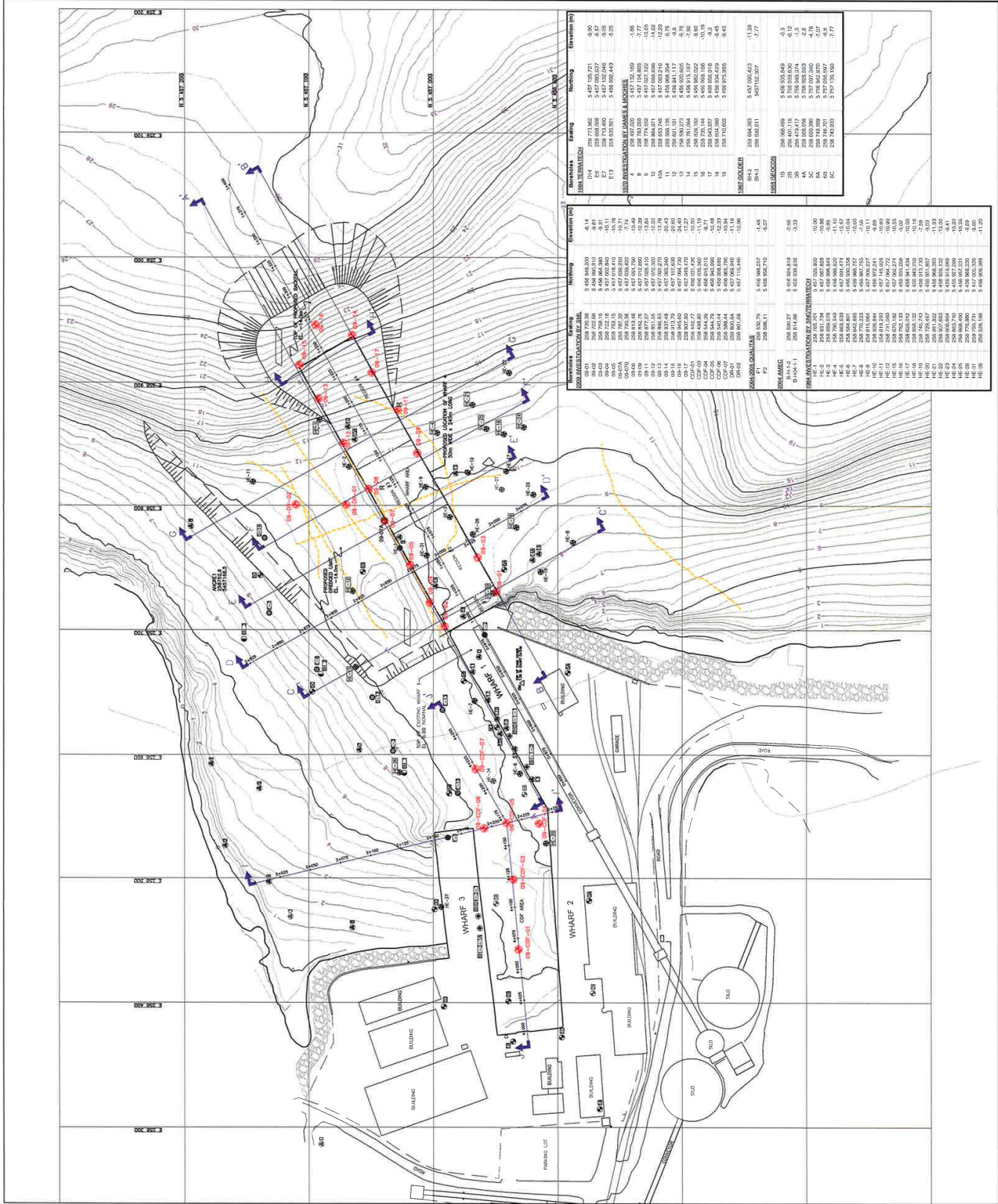
SM
 SOIL MECHANICS
 1000 WEST 10TH AVENUE, SUITE 200
 DENVER, CO 80202

LAB 5 S. I. INC.
 1200 WEST 10TH AVENUE, SUITE 200
 DENVER, CO 80202

Aluminium de Base-Combeau
 GÉOTECHNIQUE INVESTIGATIONS
 NEW WHARF #4
 ALCOA BAE-COMEAU SMELTER

BORHOLE LOCATIONS

SM-1, SM-2, SM-3, SM-4, SM-5, SM-6, SM-7, SM-8, SM-9, SM-10, SM-11, SM-12, SM-13, SM-14, SM-15, SM-16, SM-17, SM-18, SM-19, SM-20, SM-21, SM-22, SM-23, SM-24, SM-25, SM-26, SM-27, SM-28, SM-29, SM-30, SM-31, SM-32, SM-33, SM-34, SM-35, SM-36, SM-37, SM-38, SM-39, SM-40, SM-41, SM-42, SM-43, SM-44, SM-45, SM-46, SM-47, SM-48, SM-49, SM-50, SM-51, SM-52, SM-53, SM-54, SM-55, SM-56, SM-57, SM-58, SM-59, SM-60, SM-61, SM-62, SM-63, SM-64, SM-65, SM-66, SM-67, SM-68, SM-69, SM-70, SM-71, SM-72, SM-73, SM-74, SM-75, SM-76, SM-77, SM-78, SM-79, SM-80, SM-81, SM-82, SM-83, SM-84, SM-85, SM-86, SM-87, SM-88, SM-89, SM-90, SM-91, SM-92, SM-93, SM-94, SM-95, SM-96, SM-97, SM-98, SM-99, SM-100, SM-101, SM-102, SM-103, SM-104, SM-105, SM-106, SM-107, SM-108, SM-109, SM-110, SM-111, SM-112, SM-113, SM-114, SM-115, SM-116, SM-117, SM-118, SM-119, SM-120, SM-121, SM-122, SM-123, SM-124, SM-125, SM-126, SM-127, SM-128, SM-129, SM-130, SM-131, SM-132, SM-133, SM-134, SM-135, SM-136, SM-137, SM-138, SM-139, SM-140, SM-141, SM-142, SM-143, SM-144, SM-145, SM-146, SM-147, SM-148, SM-149, SM-150, SM-151, SM-152, SM-153, SM-154, SM-155, SM-156, SM-157, SM-158, SM-159, SM-160, SM-161, SM-162, SM-163, SM-164, SM-165, SM-166, SM-167, SM-168, SM-169, SM-170, SM-171, SM-172, SM-173, SM-174, SM-175, SM-176, SM-177, SM-178, SM-179, SM-180, SM-181, SM-182, SM-183, SM-184, SM-185, SM-186, SM-187, SM-188, SM-189, SM-190, SM-191, SM-192, SM-193, SM-194, SM-195, SM-196, SM-197, SM-198, SM-199, SM-200, SM-201, SM-202, SM-203, SM-204, SM-205, SM-206, SM-207, SM-208, SM-209, SM-210, SM-211, SM-212, SM-213, SM-214, SM-215, SM-216, SM-217, SM-218, SM-219, SM-220, SM-221, SM-222, SM-223, SM-224, SM-225, SM-226, SM-227, SM-228, SM-229, SM-230, SM-231, SM-232, SM-233, SM-234, SM-235, SM-236, SM-237, SM-238, SM-239, SM-240, SM-241, SM-242, SM-243, SM-244, SM-245, SM-246, SM-247, SM-248, SM-249, SM-250, SM-251, SM-252, SM-253, SM-254, SM-255, SM-256, SM-257, SM-258, SM-259, SM-260, SM-261, SM-262, SM-263, SM-264, SM-265, SM-266, SM-267, SM-268, SM-269, SM-270, SM-271, SM-272, SM-273, SM-274, SM-275, SM-276, SM-277, SM-278, SM-279, SM-280, SM-281, SM-282, SM-283, SM-284, SM-285, SM-286, SM-287, SM-288, SM-289, SM-290, SM-291, SM-292, SM-293, SM-294, SM-295, SM-296, SM-297, SM-298, SM-299, SM-300, SM-301, SM-302, SM-303, SM-304, SM-305, SM-306, SM-307, SM-308, SM-309, SM-310, SM-311, SM-312, SM-313, SM-314, SM-315, SM-316, SM-317, SM-318, SM-319, SM-320, SM-321, SM-322, SM-323, SM-324, SM-325, SM-326, SM-327, SM-328, SM-329, SM-330, SM-331, SM-332, SM-333, SM-334, SM-335, SM-336, SM-337, SM-338, SM-339, SM-340, SM-341, SM-342, SM-343, SM-344, SM-345, SM-346, SM-347, SM-348, SM-349, SM-350, SM-351, SM-352, SM-353, SM-354, SM-355, SM-356, SM-357, SM-358, SM-359, SM-360, SM-361, SM-362, SM-363, SM-364, SM-365, SM-366, SM-367, SM-368, SM-369, SM-370, SM-371, SM-372, SM-373, SM-374, SM-375, SM-376, SM-377, SM-378, SM-379, SM-380, SM-381, SM-382, SM-383, SM-384, SM-385, SM-386, SM-387, SM-388, SM-389, SM-390, SM-391, SM-392, SM-393, SM-394, SM-395, SM-396, SM-397, SM-398, SM-399, SM-400, SM-401, SM-402, SM-403, SM-404, SM-405, SM-406, SM-407, SM-408, SM-409, SM-410, SM-411, SM-412, SM-413, SM-414, SM-415, SM-416, SM-417, SM-418, SM-419, SM-420, SM-421, SM-422, SM-423, SM-424, SM-425, SM-426, SM-427, SM-428, SM-429, SM-430, SM-431, SM-432, SM-433, SM-434, SM-435, SM-436, SM-437, SM-438, SM-439, SM-440, SM-441, SM-442, SM-443, SM-444, SM-445, SM-446, SM-447, SM-448, SM-449, SM-450, SM-451, SM-452, SM-453, SM-454, SM-455, SM-456, SM-457, SM-458, SM-459, SM-460, SM-461, SM-462, SM-463, SM-464, SM-465, SM-466, SM-467, SM-468, SM-469, SM-470, SM-471, SM-472, SM-473, SM-474, SM-475, SM-476, SM-477, SM-478, SM-479, SM-480, SM-481, SM-482, SM-483, SM-484, SM-485, SM-486, SM-487, SM-488, SM-489, SM-490, SM-491, SM-492, SM-493, SM-494, SM-495, SM-496, SM-497, SM-498, SM-499, SM-500, SM-501, SM-502, SM-503, SM-504, SM-505, SM-506, SM-507, SM-508, SM-509, SM-510, SM-511, SM-512, SM-513, SM-514, SM-515, SM-516, SM-517, SM-518, SM-519, SM-520, SM-521, SM-522, SM-523, SM-524, SM-525, SM-526, SM-527, SM-528, SM-529, SM-530, SM-531, SM-532, SM-533, SM-534, SM-535, SM-536, SM-537, SM-538, SM-539, SM-540, SM-541, SM-542, SM-543, SM-544, SM-545, SM-546, SM-547, SM-548, SM-549, SM-550, SM-551, SM-552, SM-553, SM-554, SM-555, SM-556, SM-557, SM-558, SM-559, SM-560, SM-561, SM-562, SM-563, SM-564, SM-565, SM-566, SM-567, SM-568, SM-569, SM-570, SM-571, SM-572, SM-573, SM-574, SM-575, SM-576, SM-577, SM-578, SM-579, SM-580, SM-581, SM-582, SM-583, SM-584, SM-585, SM-586, SM-587, SM-588, SM-589, SM-590, SM-591, SM-592, SM-593, SM-594, SM-595, SM-596, SM-597, SM-598, SM-599, SM-600, SM-601, SM-602, SM-603, SM-604, SM-605, SM-606, SM-607, SM-608, SM-609, SM-610, SM-611, SM-612, SM-613, SM-614, SM-615, SM-616, SM-617, SM-618, SM-619, SM-620, SM-621, SM-622, SM-623, SM-624, SM-625, SM-626, SM-627, SM-628, SM-629, SM-630, SM-631, SM-632, SM-633, SM-634, SM-635, SM-636, SM-637, SM-638, SM-639, SM-640, SM-641, SM-642, SM-643, SM-644, SM-645, SM-646, SM-647, SM-648, SM-649, SM-650, SM-651, SM-652, SM-653, SM-654, SM-655, SM-656, SM-657, SM-658, SM-659, SM-660, SM-661, SM-662, SM-663, SM-664, SM-665, SM-666, SM-667, SM-668, SM-669, SM-670, SM-671, SM-672, SM-673, SM-674, SM-675, SM-676, SM-677, SM-678, SM-679, SM-680, SM-681, SM-682, SM-683, SM-684, SM-685, SM-686, SM-687, SM-688, SM-689, SM-690, SM-691, SM-692, SM-693, SM-694, SM-695, SM-696, SM-697, SM-698, SM-699, SM-700, SM-701, SM-702, SM-703, SM-704, SM-705, SM-706, SM-707, SM-708, SM-709, SM-710, SM-711, SM-712, SM-713, SM-714, SM-715, SM-716, SM-717, SM-718, SM-719, SM-720, SM-721, SM-722, SM-723, SM-724, SM-725, SM-726, SM-727, SM-728, SM-729, SM-730, SM-731, SM-732, SM-733, SM-734, SM-735, SM-736, SM-737, SM-738, SM-739, SM-740, SM-741, SM-742, SM-743, SM-744, SM-745, SM-746, SM-747, SM-748, SM-749, SM-750, SM-751, SM-752, SM-753, SM-754, SM-755, SM-756, SM-757, SM-758, SM-759, SM-760, SM-761, SM-762, SM-763, SM-764, SM-765, SM-766, SM-767, SM-768, SM-769, SM-770, SM-771, SM-772, SM-773, SM-774, SM-775, SM-776, SM-777, SM-778, SM-779, SM-780, SM-781, SM-782, SM-783, SM-784, SM-785, SM-786, SM-787, SM-788, SM-789, SM-790, SM-791, SM-792, SM-793, SM-794, SM-795, SM-796, SM-797, SM-798, SM-799, SM-800, SM-801, SM-802, SM-803, SM-804, SM-805, SM-806, SM-807, SM-808, SM-809, SM-810, SM-811, SM-812, SM-813, SM-814, SM-815, SM-816, SM-817, SM-818, SM-819, SM-820, SM-821, SM-822, SM-823, SM-824, SM-825, SM-826, SM-827, SM-828, SM-829, SM-830, SM-831, SM-832, SM-833, SM-834, SM-835, SM-836, SM-837, SM-838, SM-839, SM-840, SM-841, SM-842, SM-843, SM-844, SM-845, SM-846, SM-847, SM-848, SM-849, SM-850, SM-851, SM-852, SM-853, SM-854, SM-855, SM-856, SM-857, SM-858, SM-859, SM-860, SM-861, SM-862, SM-863, SM-864, SM-865, SM-866, SM-867, SM-868, SM-869, SM-870, SM-871, SM-872, SM-873, SM-874, SM-875, SM-876, SM-877, SM-878, SM-879, SM-880, SM-881, SM-882, SM-883, SM-884, SM-885, SM-886, SM-887, SM-888, SM-889, SM-890, SM-891, SM-892, SM-893, SM-894, SM-895, SM-896, SM-897, SM-898, SM-899, SM-900, SM-901, SM-902, SM-903, SM-904, SM-905, SM-906, SM-907, SM-908, SM-909, SM-910, SM-911, SM-912, SM-913, SM-914, SM-915, SM-916, SM-917, SM-918, SM-919, SM-920, SM-921, SM-922, SM-923, SM-924, SM-925, SM-926, SM-927, SM-928, SM-929, SM-930, SM-931, SM-932, SM-933, SM-934, SM-935, SM-936, SM-937, SM-938, SM-939, SM-940, SM-941, SM-942, SM-943, SM-944, SM-945, SM-946, SM-947, SM-948, SM-949, SM-950, SM-951, SM-952, SM-953, SM-954, SM-955, SM-956, SM-957, SM-958, SM-959, SM-960, SM-961, SM-962, SM-963, SM-964, SM-965, SM-966, SM-967, SM-968, SM-969, SM-970, SM-971, SM-972, SM-973, SM-974, SM-975, SM-976, SM-977, SM-978, SM-979, SM-980, SM-981, SM-982, SM-983, SM-984, SM-985, SM-986, SM-987, SM-988, SM-989, SM-990, SM-991, SM-992, SM-993, SM-994, SM-995, SM-996, SM-997, SM-998, SM-999, SM-1000.



BORHOLE	DEPTH	STARTING ELEVATION (ft)	ENDING ELEVATION (ft)	SOIL TYPE
SM-1	10	5458.845	5458.845	SM-1
SM-2	10	5458.845	5458.845	SM-2
SM-3	10	5458.845	5458.845	SM-3
SM-4	10	5458.845	5458.845	SM-4
SM-5	10	5458.845	5458.845	SM-5
SM-6	10	5458.845	5458.845	SM-6
SM-7	10	5458.845	5458.845	SM-7
SM-8	10	5458.845	5458.845	SM-8
SM-9	10	5458.845	5458.845	SM-9
SM-10	10	5458.845	5458.845	SM-10
SM-11	10	5458.845	5458.845	SM-11
SM-12	10	5458.845	5458.845	SM-12
SM-13	10	5458.845	5458.845	SM-13
SM-14	10	5458.845	5458.845	SM-14
SM-15	10	5458.845	5458.845	SM-15
SM-16	10	5458.845	5458.845	SM-16
SM-17	10	5458.845	5458.845	SM-17
SM-18	10	5458.845	5458.845	SM-18
SM-19	10	5458.845	5458.845	SM-19
SM-20	10	5458.845	5458.845	SM-20
SM-21	10	5458.845	5458.845	SM-21
SM-22	10	5458.845	5458.845	SM-22
SM-23	10	5458.845	5458.845	SM-23
SM-24	10	5458.845	5458.845	SM-24
SM-25	10	5458.845	5458.845	SM-25
SM-26	10	5458.845	5458.845	SM-26
SM-27	10	5458.845	5458.845	SM-27
SM-28	10	5458.845	5458.845	SM-28
SM-29	10	5458.845	5458.845	SM-29
SM-30	10	5458.845	5458.845	SM-30
SM-31	10	5458.845	5458.845	SM-31
SM-32	10	5458.845	5458.845	SM-32
SM-33	10	5458.845	5458.845	SM-33
SM-34	10	5458.845	5458.845	SM-34
SM-35	10	5458.845	5458.845	SM-35
SM-36	10	5458.845	5458.845	SM-36
SM-37	10	5458.845	5458.845	SM-37
SM-38	10	5458.845	5458.845	SM-38
SM-39	10	5458.845	5458.845	SM-39
SM-40	10	5458.845	5458.845	SM-40
SM-41	10	5458.845	5458.845	SM-41
SM-42	10	5458.845	5458.845	SM-42
SM-43	10	5458.845	5458.845	SM-43
SM-44	10	5458.845	5458.845	SM-44
SM-45	10	5458.845	5458.845	SM-45
SM-46	10	5458.845	5458.845	SM-46
SM-47	10	5458.845	5458.845	SM-47
SM-48	10	5458.845	5458.845	SM-48
SM-49	10	5458.845	5458.845	SM-49
SM-50	10	5458.845	5458.845	SM-50
SM-51	10	5458.845	5458.845	SM-51
SM-52	10	5458.845	5458.845	SM-52
SM-53	10	5458.845	5458.845	SM-53
SM-54	10	5458.845	5458.845	SM-54
SM-55	10	5458.845	5458.845	SM-55
SM-56	10	5458.845	5458.845	SM-56
SM-57	10	5458.845	5458.845	SM-57
SM-58	10	5458.845	5458.845	SM-58
SM-59	10	5458.845	5458.845	SM-59
SM-60	10	5458.845	5458.845	SM-60
SM-61	10	5458.845	5458.845	SM-61
SM-62	10	5458.845	5458.845	SM-62
SM-63	10	5458.845	5458.845	SM-63
SM-64	10	5458.845	5458.845	SM-64
SM-65	10	5458.845	5458.845	SM-65
SM-66	10	5458.845	5458.845	SM-66
SM-67	10	5458.845	5458.845	SM-67
SM-68	10	5458.845	5458.845	SM-68
SM-69	10	5458.845	5458.845	SM-69
SM-70	10	5458.845	5458.845	SM-70
SM-71	10	5458.845	5458.845	SM-71
SM-72	10	5458.845	5458.845	SM-72
SM-73	10	5458.845	5458.845	SM-73
SM-74	10	5458.845	5458.845	SM-74
SM-75	10	5458.845	5458.845	SM-75
SM-76	10	5458.845	5458.845	SM-76
SM-77	10	5458.845	5458.845	SM-77
SM-78	10	5458.845	5458.845	SM-78
SM-79	10	5458.845	5458.845	SM-79
SM-80	10	5458.845	5458.845	SM-80
SM-81	10	5458.845		

LEGEND

STRATIGRAPHIC SYMBOLS

A/E2X	COMPACT UPPER SAND
B/E2X	STRATIFIED CLAYT OUTPOST
C/E2X	LOOSE SILTY SAND
D/E2X	COMPACT TO VERY DENSE SILTY SAND
E/E2X	EXCELLENCE QUALITY GRANITE ROCK
F/E2X	WALK LEVEL

EXPOSURES IDENTIFICATION

OP-15	2004 INVESTIGATION BY SM
OP-16	2004 INVESTIGATION BY SM
OP-17	2004 INVESTIGATION BY SM/TERBATECH
OP-18	1984 INVESTIGATION BY SM/TERBATECH
OP-19	1984 INVESTIGATION BY TERBATECH
OP-20	1987 COLLIER
OP-21	1985 GEODIN

SYMBOLS (Investigation)

SM 2009	EXPOSURE
SM 1984	EXPOSURE
SM 1985	EXPOSURE
SM 1986	EXPOSURE
SM 1987	EXPOSURE
SM 1988	EXPOSURE
SM 1989	EXPOSURE
SM 1990	EXPOSURE
SM 1991	EXPOSURE
SM 1992	EXPOSURE
SM 1993	EXPOSURE
SM 1994	EXPOSURE
SM 1995	EXPOSURE
SM 1996	EXPOSURE
SM 1997	EXPOSURE
SM 1998	EXPOSURE
SM 1999	EXPOSURE
SM 2000	EXPOSURE

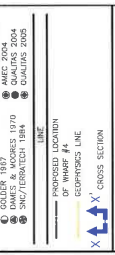
PROPOSED LOCATION

GEOTECHNICAL LINE

CROSS SECTION

NOTE: THE SURVEY DATUM IS BASED ON THE FOLLOWING

1. REFERENCE MARK:
 - BANGKOK CANAL
 - RECORDING DATUM: 15.2821 CARROT DATUM: 14.039
 - MAD 53 (MAD CANAL) 3' MIN ZONE 6
2. THE SURVEY DATUM WHICH THE '0' LEVEL IS 1.4M BELOW THE GEODETIC DATUM.



NO.	PROPOSED WHARF #4	DATE
1	PROPOSED WHARF #4	NO
2	PROPOSED WHARF #4	NO
3	PROPOSED WHARF #4	NO
4	PROPOSED WHARF #4	NO
5	PROPOSED WHARF #4	NO
6	PROPOSED WHARF #4	NO
7	PROPOSED WHARF #4	NO
8	PROPOSED WHARF #4	NO
9	PROPOSED WHARF #4	NO
10	PROPOSED WHARF #4	NO

NO.	PROPOSED WHARF #4	DATE
1	PROPOSED WHARF #4	NO
2	PROPOSED WHARF #4	NO
3	PROPOSED WHARF #4	NO
4	PROPOSED WHARF #4	NO
5	PROPOSED WHARF #4	NO
6	PROPOSED WHARF #4	NO
7	PROPOSED WHARF #4	NO
8	PROPOSED WHARF #4	NO
9	PROPOSED WHARF #4	NO
10	PROPOSED WHARF #4	NO

NO.	PROPOSED WHARF #4	DATE
1	PROPOSED WHARF #4	NO
2	PROPOSED WHARF #4	NO
3	PROPOSED WHARF #4	NO
4	PROPOSED WHARF #4	NO
5	PROPOSED WHARF #4	NO
6	PROPOSED WHARF #4	NO
7	PROPOSED WHARF #4	NO
8	PROPOSED WHARF #4	NO
9	PROPOSED WHARF #4	NO
10	PROPOSED WHARF #4	NO



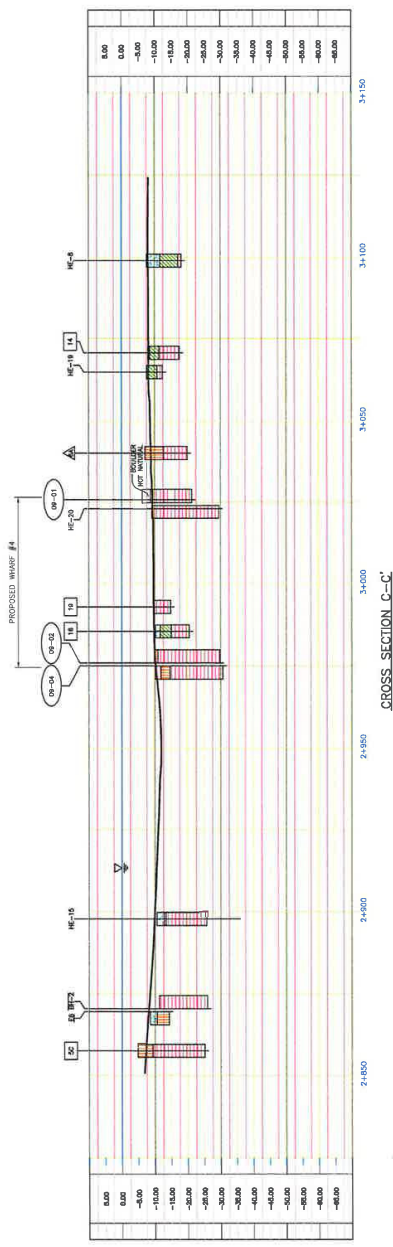
SMI
LABO S.M. INC.
111, RUE DE LA PAIX, 1000 BRUXELLES, BELGIUM

Aluminière de Bate-Comeau

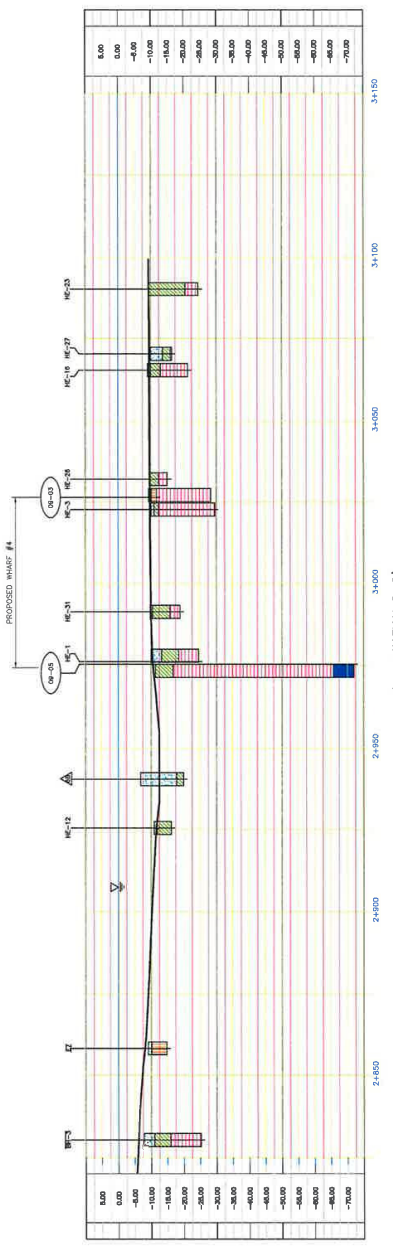
GEO-TECHNICAL INVESTIGATIONS
NEW WHARF #4
ALCOA BATE-COMEAU SMELTER

CROSS SECTIONS
C-C', D-D', E-E'

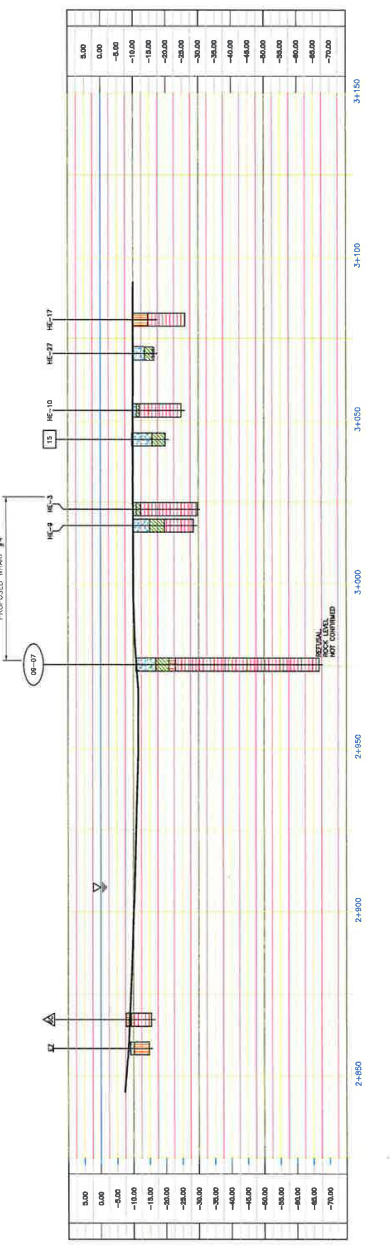
Drawn by: A. BENTH, M.Sc. S. DAVELINE, Ing.
Checked by: S. GEMINIA, M.Sc. J. M. PAULBERT, Ing.
Scale: 1:1000
Date: 24/03/2010
9 19 18 20 METERS
PROJETS
F.0.9.3.B.2.3.0.0.K.0.3 - A



CROSS SECTION C-C'



CROSS SECTION D-D'



CROSS SECTION E-E'

LEGEND

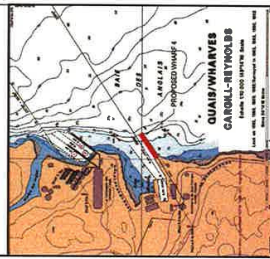
- STRATIGRAPHIC SYMBOLS**
- A [Symbol] UPPER SAND
 - B [Symbol] STRATIFIED CLAYEY DEPOSIT
 - C [Symbol] LOOSE SILTY SAND
 - D [Symbol] COMPACT TO VERY DENSE EXCELLENT QUALITY SAND
 - E [Symbol] WATER TABLE

- BOREHOLES IDENTIFICATION**
- 1984 INVESTIGATION BY SNC/TERMATECH
 - 1973 COLLIER
 - 1955 GECOM

- SYMBOLS (Interpretation)**
- SMI 2009
 - GEOTECH INVESTIGATIONS
 - 1984
 - 1973
 - 1955

NOTE: THE SURVEY DATUMS IS BASED ON THE FOLLOWING

- 1. GEODESIC REFERENCE MARK
 - H# 5 472 ASB88
 - H# 53 (MOM CERS), 3' MIN ZONE 8
- 2. ALL ELEVATIONS SHOWN ON THIS DRAWING ARE CHART THE GEODESIC DATUM.



NO.	DESCRIPTION	DATE
1	PRELIMINARY	10/11/2010
2	REVISED	11/11/2010
3	FINAL	12/11/2010

NO.	DESCRIPTION	DATE
1	PRELIMINARY	10/11/2010
2	REVISED	11/11/2010
3	FINAL	12/11/2010

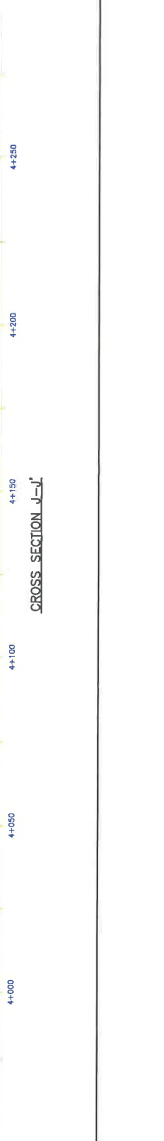
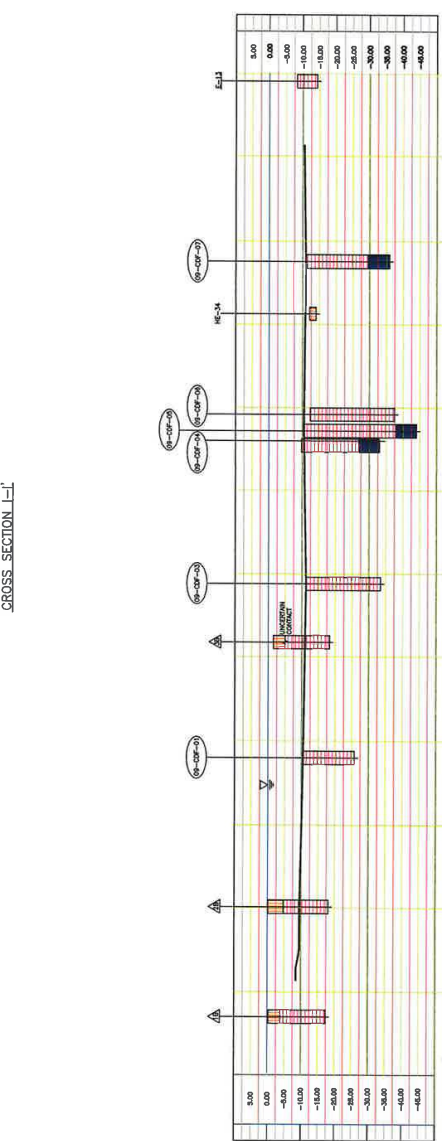
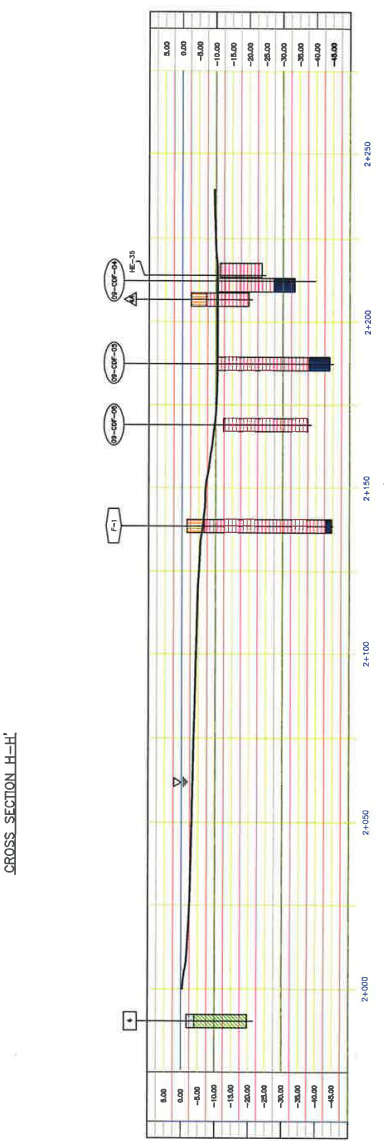
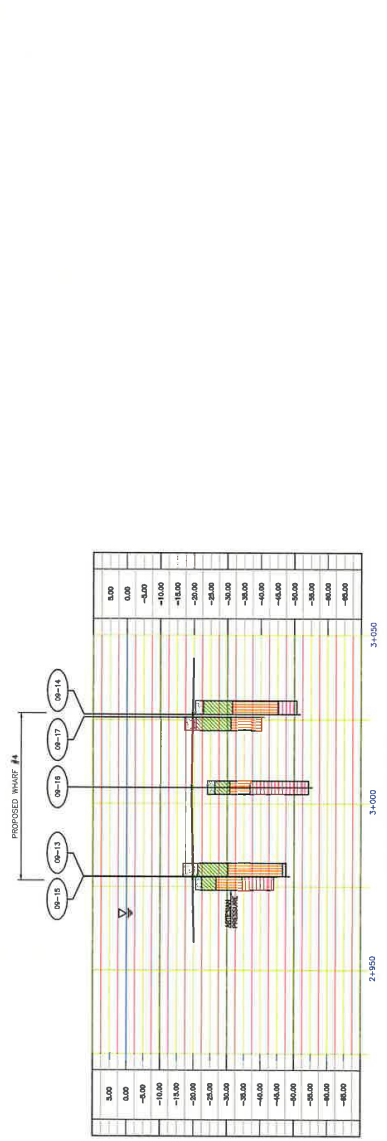


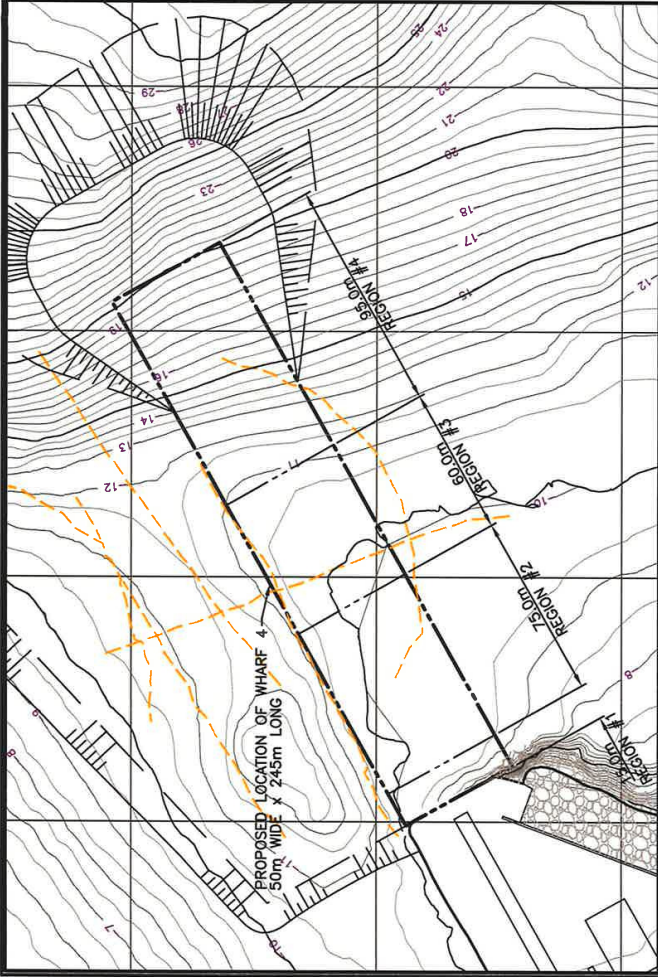
SMI
LABO S.M. INC.
210, Boulevard de la Baie-Comeau
Baie-Comeau, QC G0A 1R0

Alumineries de Baie-Comeau
GEO-TECHNICAL INVESTIGATIONS
NEW WHARF #4
ALCOA BAIE-COMEAU SMELTER

CROSS SECTION H-H'
PROPOSED WHARF #4
SNC/TERMATECH
1984
1973
1955

CROSS SECTION J-J'
PROPOSED WHARF #4
SNC/TERMATECH
1984
1973
1955

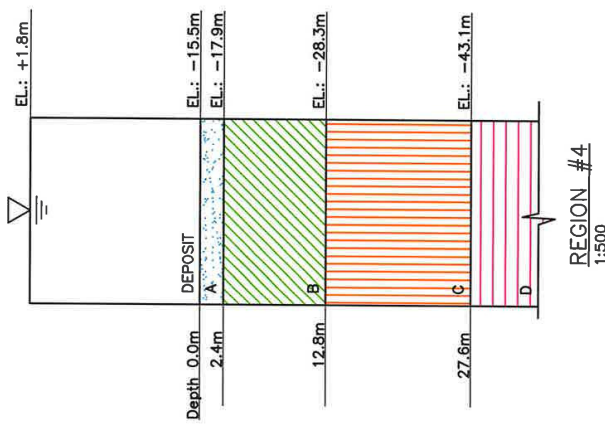
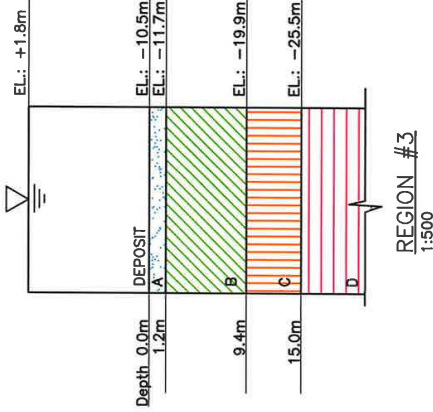
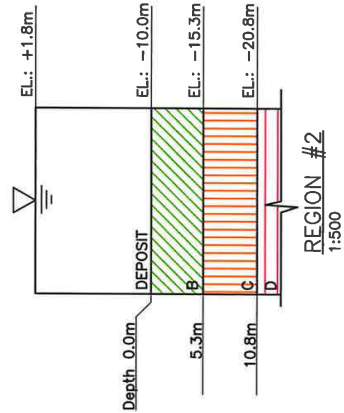
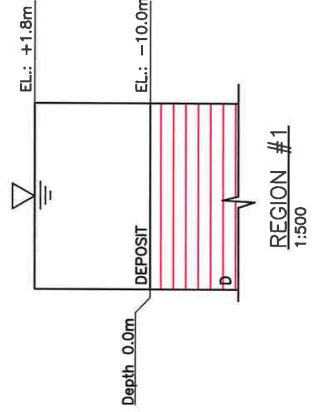




LEGEND

	DEPOSIT A		DEPOSIT B		DEPOSIT C		DEPOSIT D
COMPACT UPPER SAND DEPOSIT	STRATIFIED CLAYEY DEPOSIT	LOOSE SILTY SAND DEPOSIT	COMPACT TO VERY DENSE LOWER SAND DEPOSIT	EXCELLENT QUALITY GRANITIC ROCK	WATER LEVEL		

PLAN VIEW
1:2000



SMI
LABO S.M. INC.
(514) 344-3607 • Fax: (514) 344-3524 • www.smi-quebec.com

Aluminerie de Baie-Comeau

SCHEMATIC

NO	DATE	DESCRIPTION
01	22/02/10	PRELIMINARY
02	30/07/10	REV. 02
03	22/02/10	REV. 03

OWNER BY:	A. BENOIT Tech.
PROJECTED BY:	S. GRAVELINE Ing.
VERIFIED BY:	S. GRAVELINE Ing.
APPROVED BY:	A. PHILBERT Ing.
DATE:	03/10/26
CAD FILE:	93682300K001.DWG
SCALE:	AS INDICATED

PROJECT:	GEOTECHNICAL INVESTIGATIONS NEW WHARF #4 ALCOA BAIÉ-COMEAU SMELTER
TITLE:	SIMPLIFIED REPRESENTATION OF STRATIGRAPHY
DRAWING NO.:	F.0.919.3.8.213.0.0
REV.:	K.0.0.6 - A