

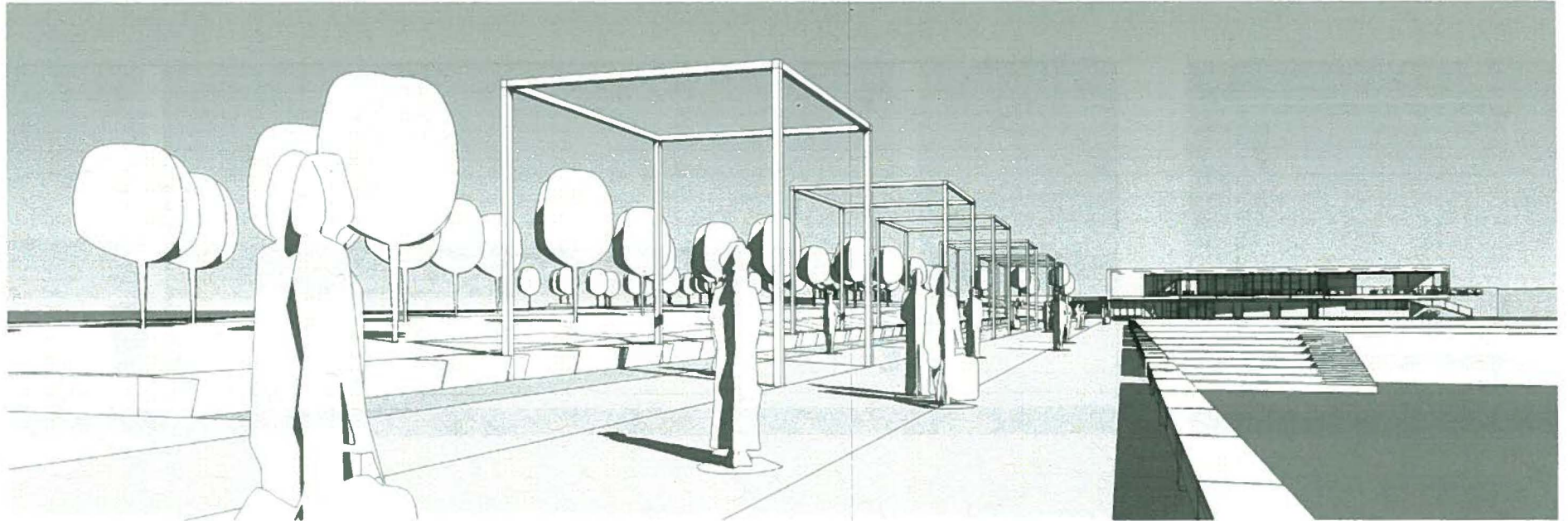
299

DA16

Projet d'aménagement de la phase 3 de la
promenade Samuel-De Champlain entre la côte
de Sillery et la côte Gilmour à Québec
6211-23-022

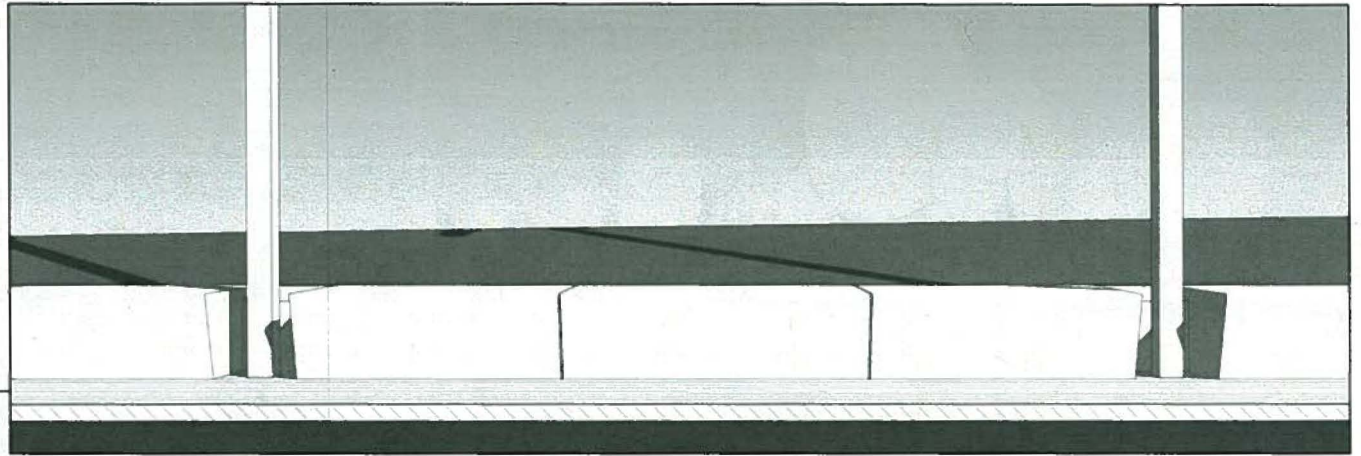
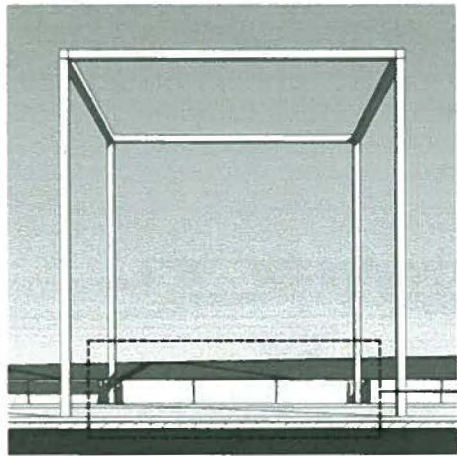
QUAI SAINT-MICHEL





QUAI ST-MICHEL

03/08/13
DAOUST LESTAGE
architecture
design urbain



03/08/13

QUAI ST-MICHEL

DAOUST LESTAGE

architecture
design urbain

COMMISSION DE
LA CAPITALE
NATIONALE

Québec

DAOUST LESTAGE INC. - collaboration WILLIAMS ASSELIN ACKAOUI - OPTION AMÉNAGEMENT

GÉNIVAR - SNC LAVALIN INC.