



*Barrage de Chambly*

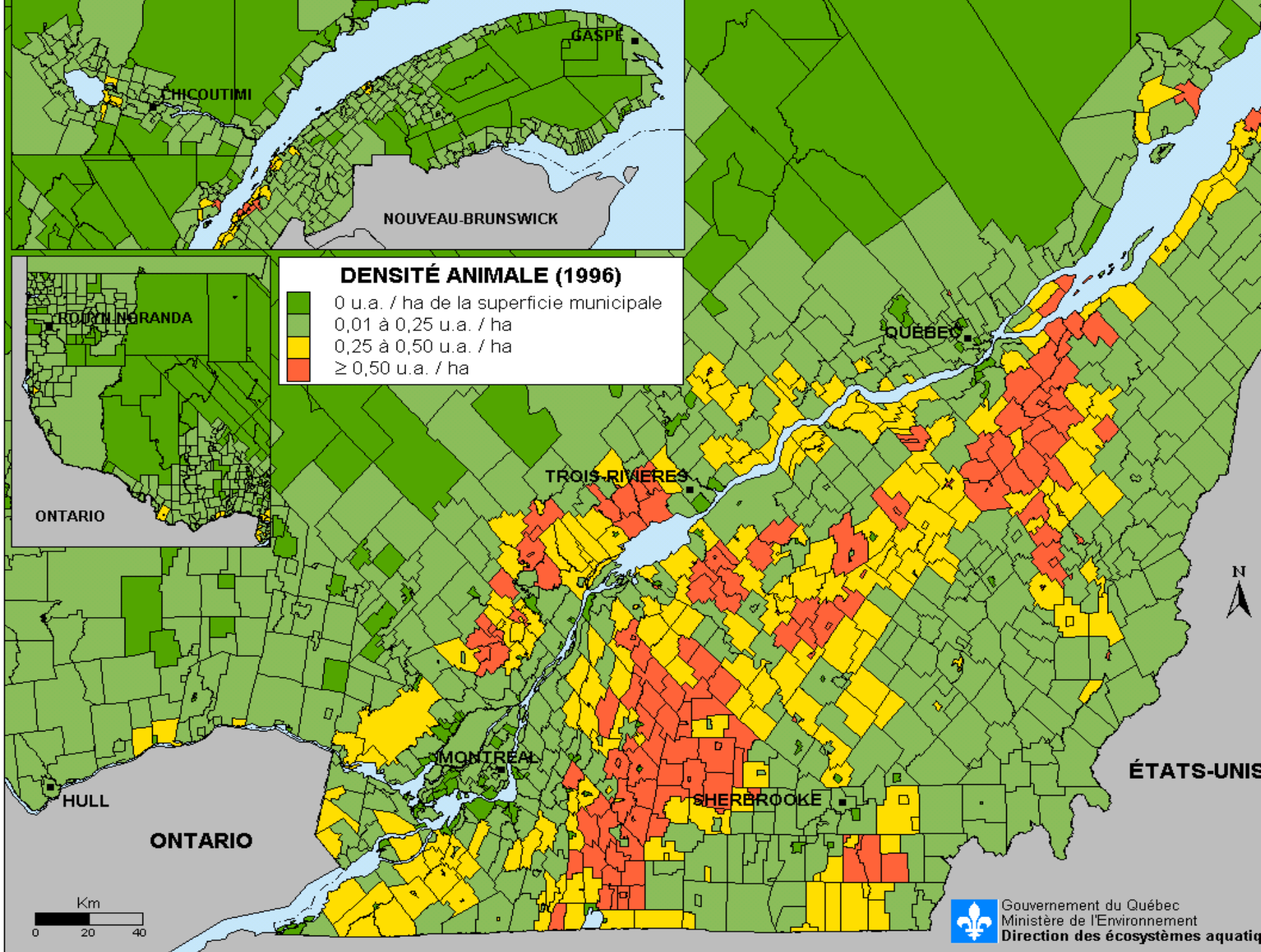
Photo : Ministère de l'Environnement

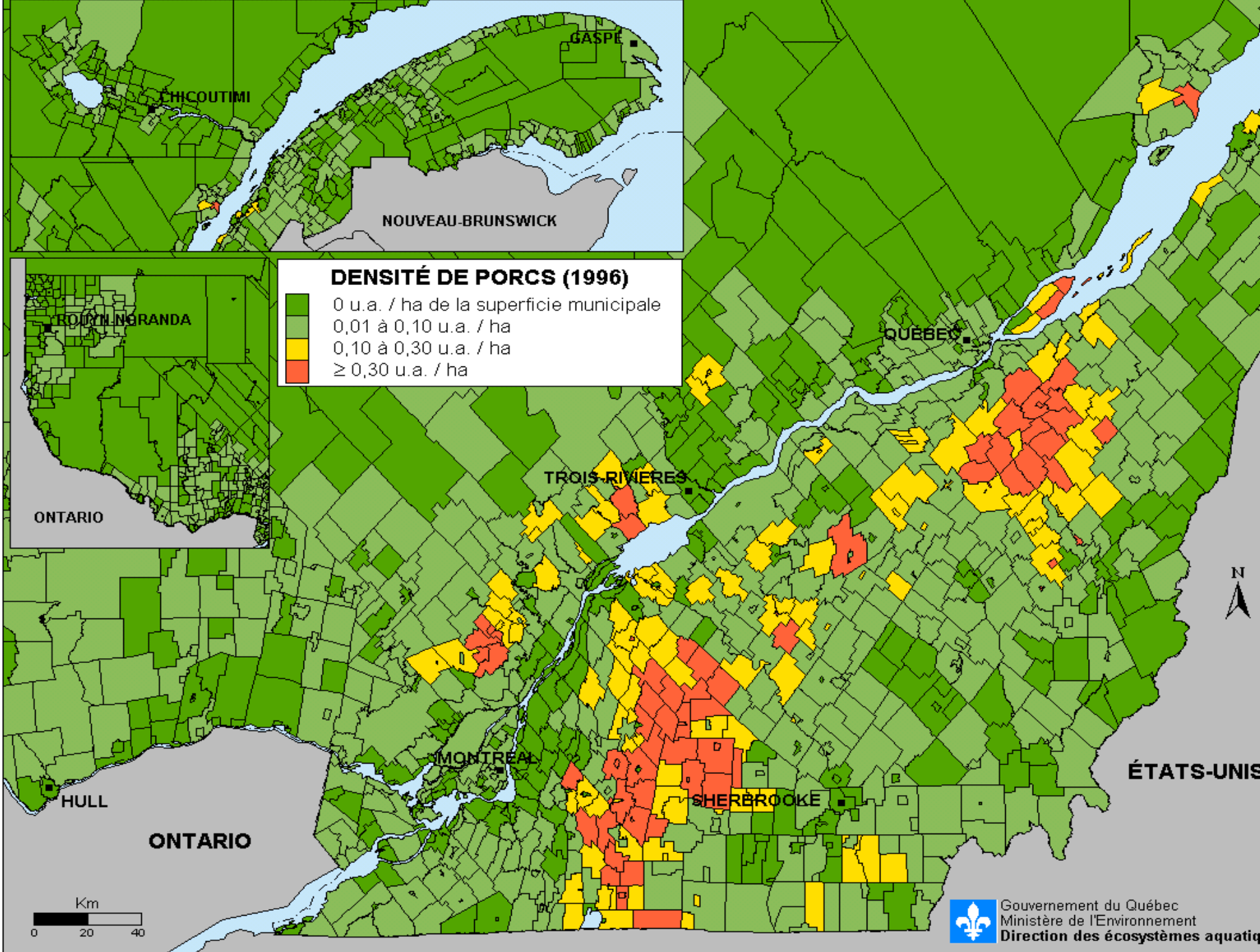
# QUALITÉ DES EAUX DE SURFACE DE LA MONTÉRÉGIE

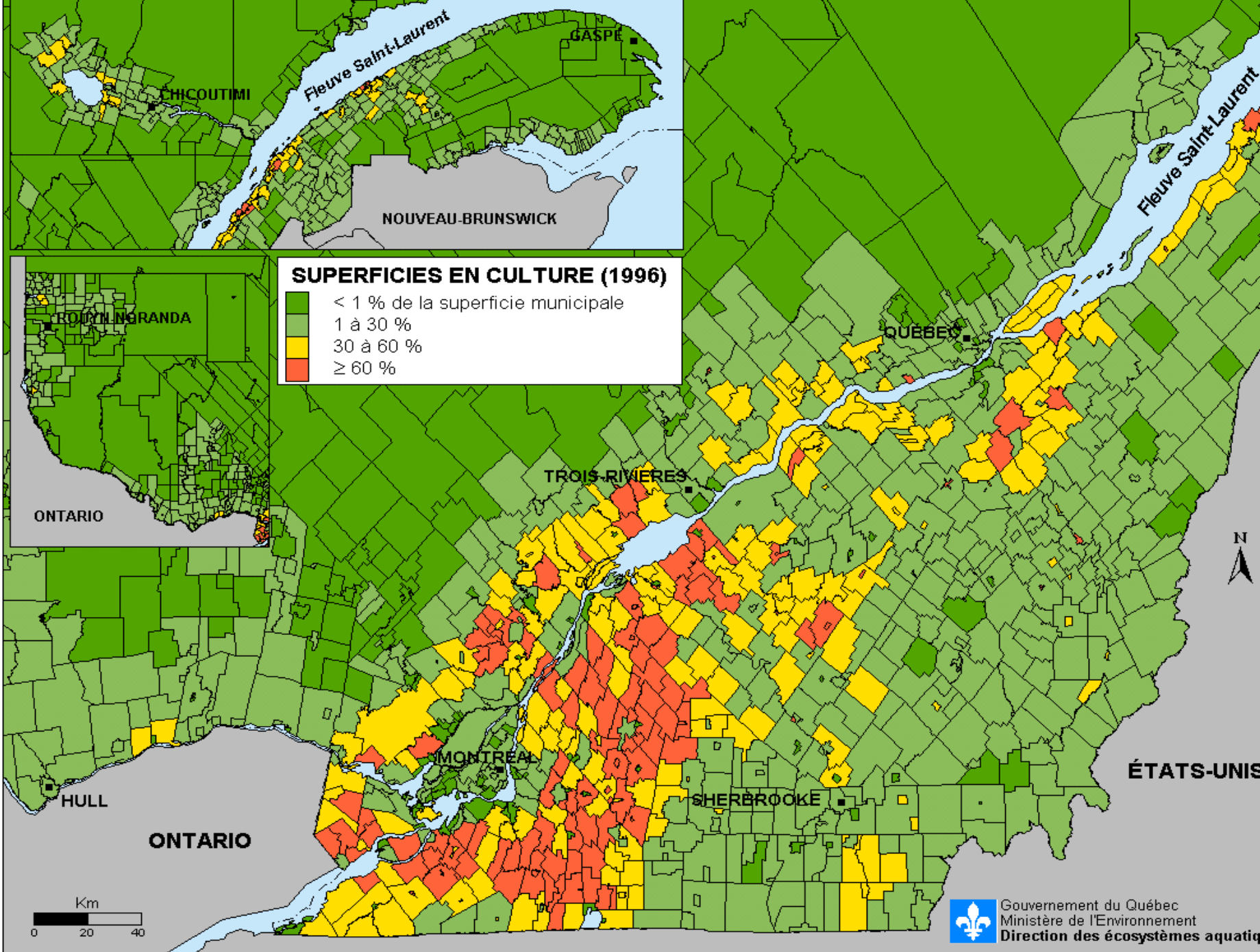
Audiences publiques sur le  
développement durable de la  
production porcine  
Saint-Jean-sur-Richelieu  
28 janvier 2003

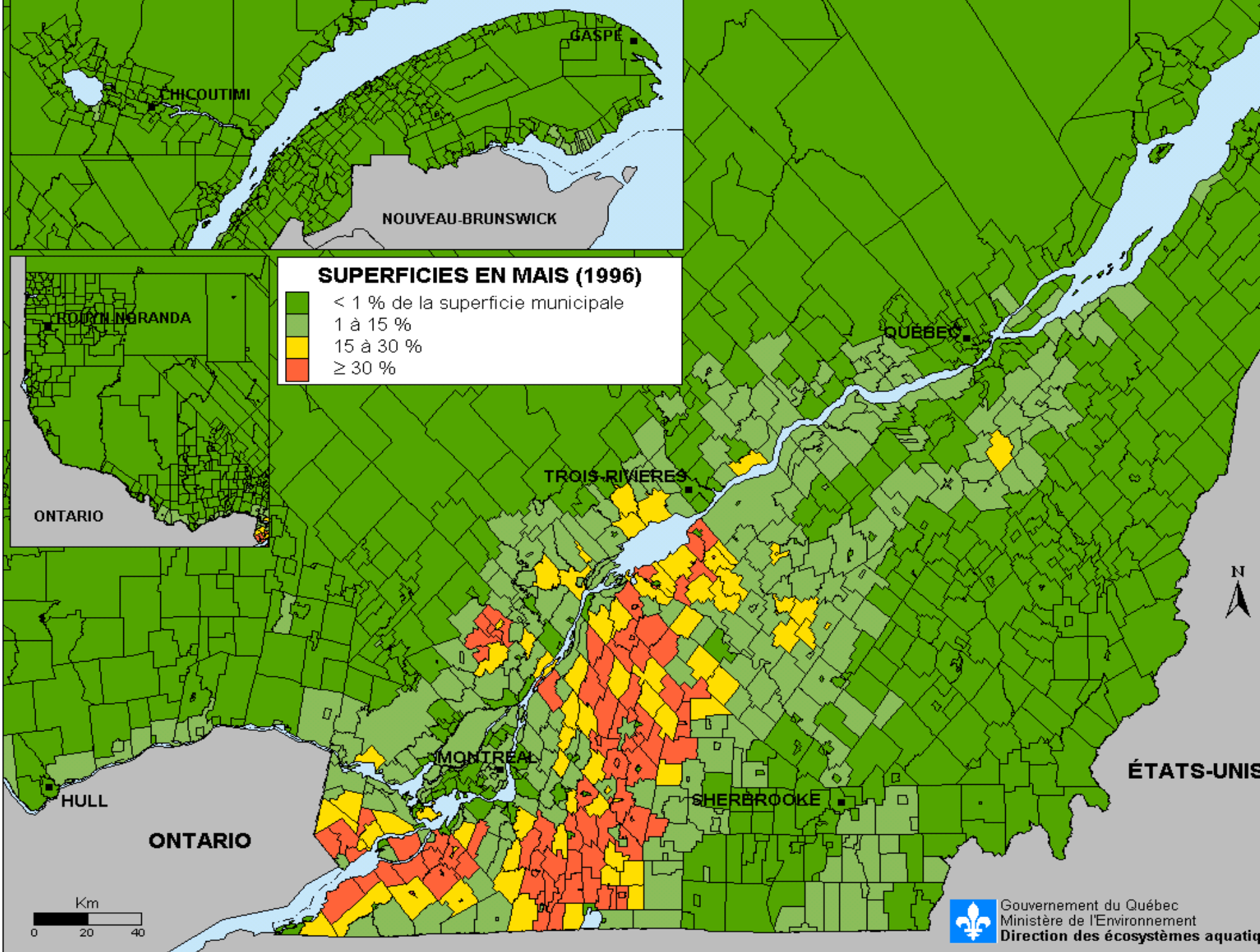
Marc Simoneau




Direction du suivi de l'état de  
l'environnement

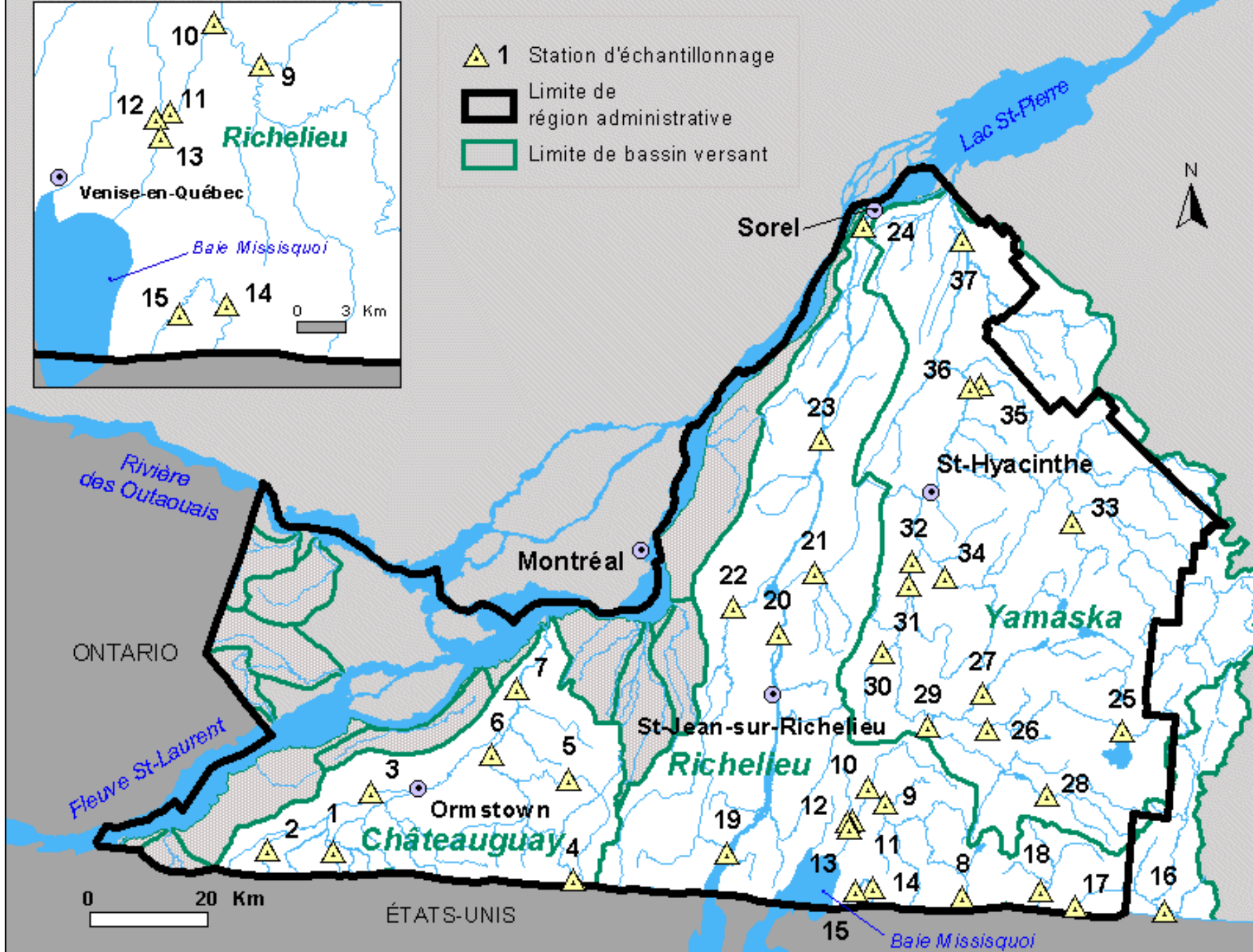
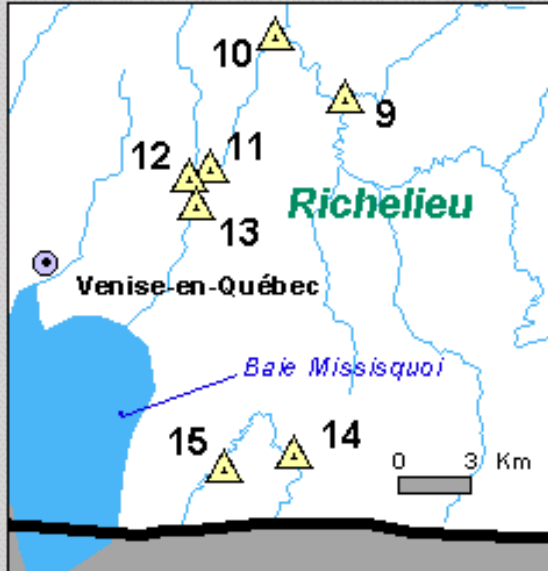






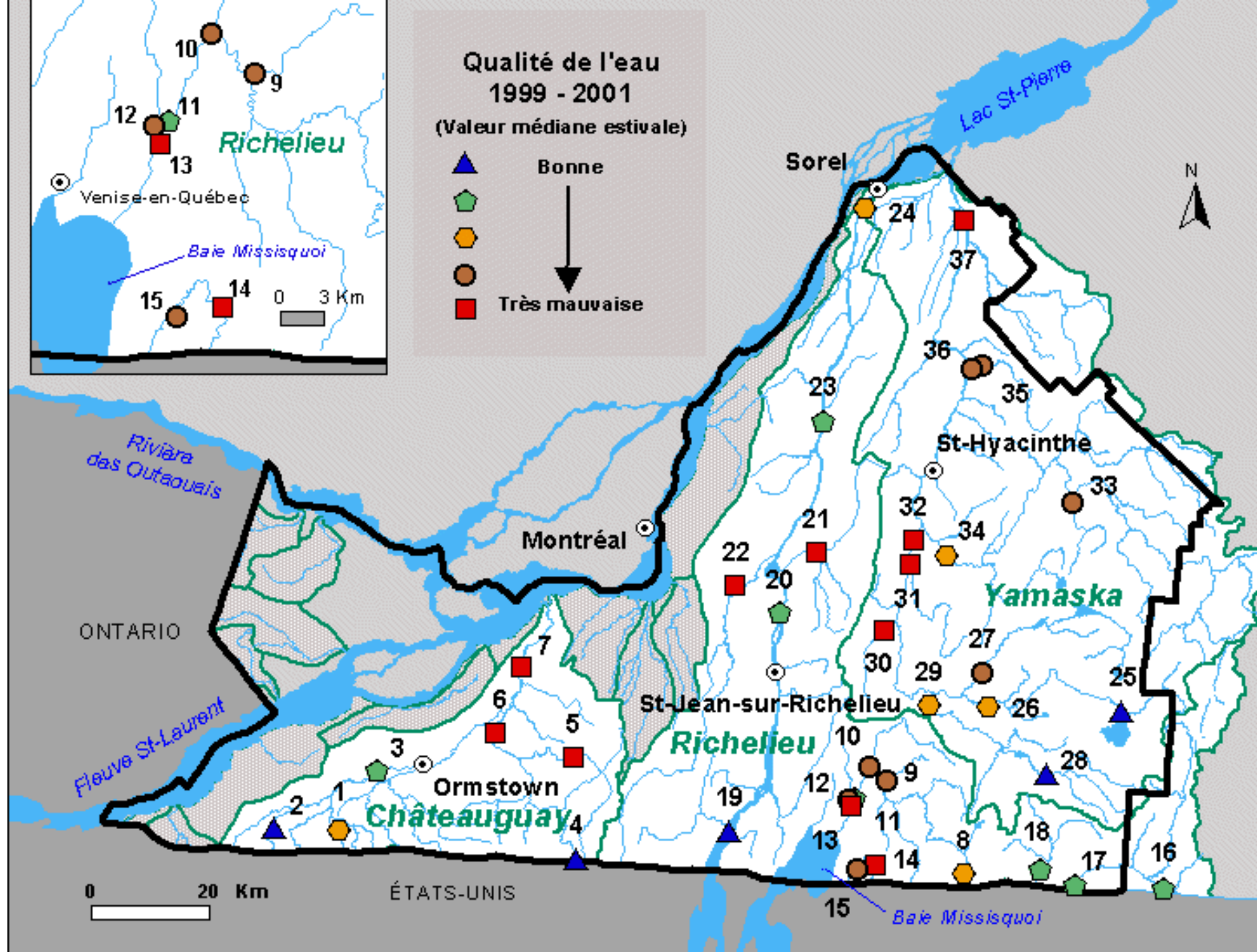
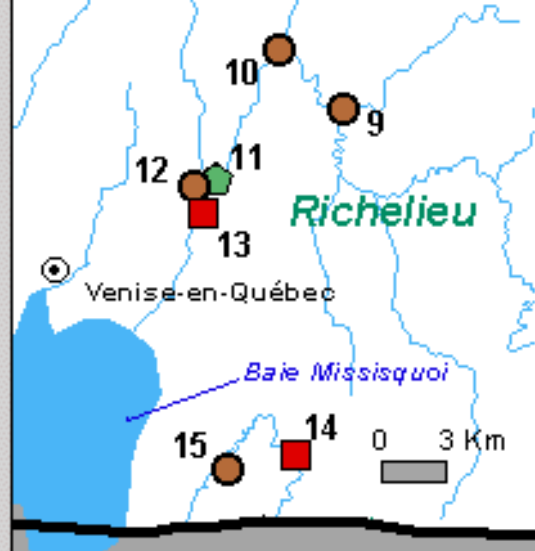


-  1 Station d'échantillonnage
-  Limite de région administrative
-  Limite de bassin versant

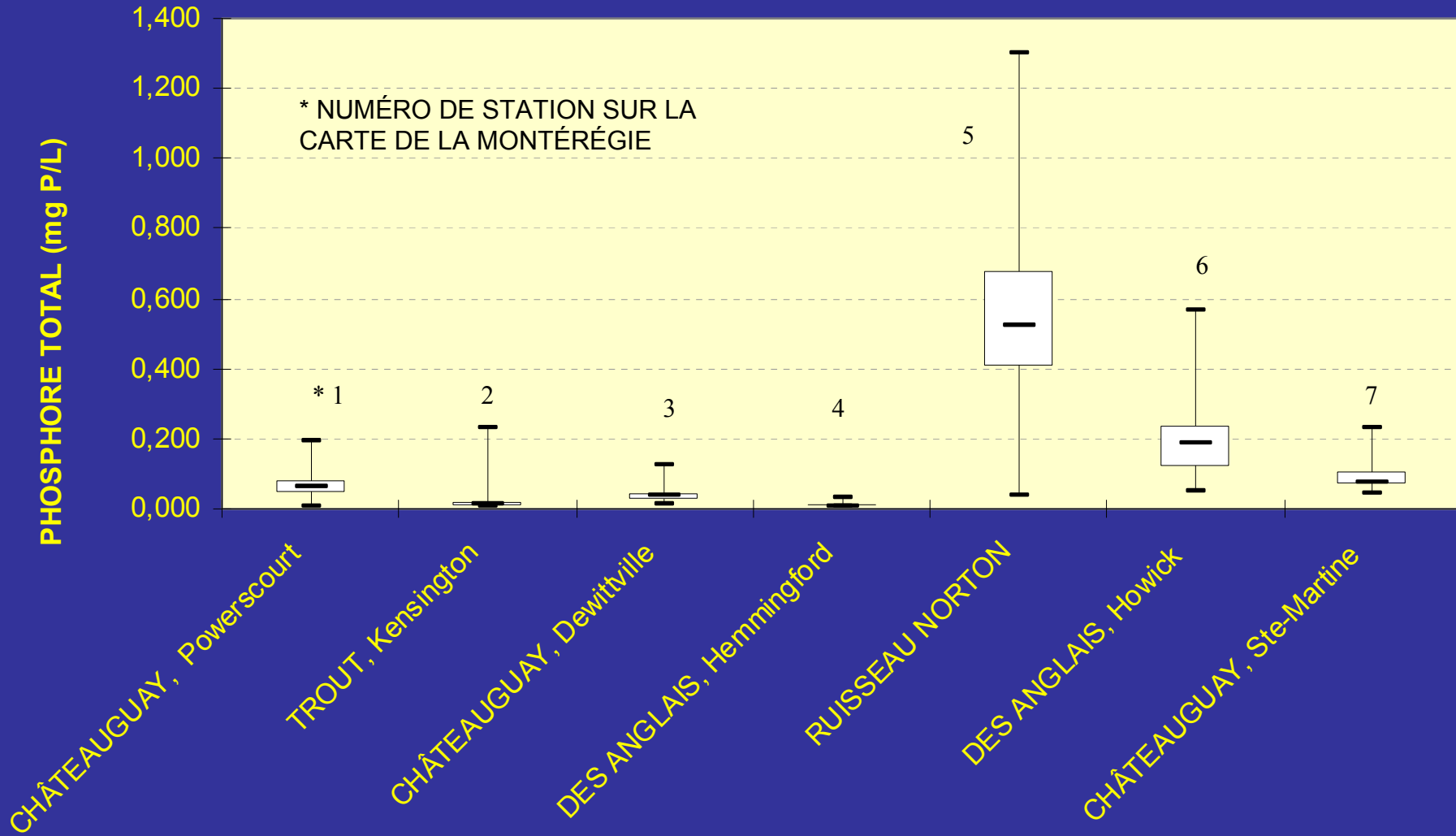


# Qualité de l'eau 1999 - 2001

(Valeur médiane estivale)

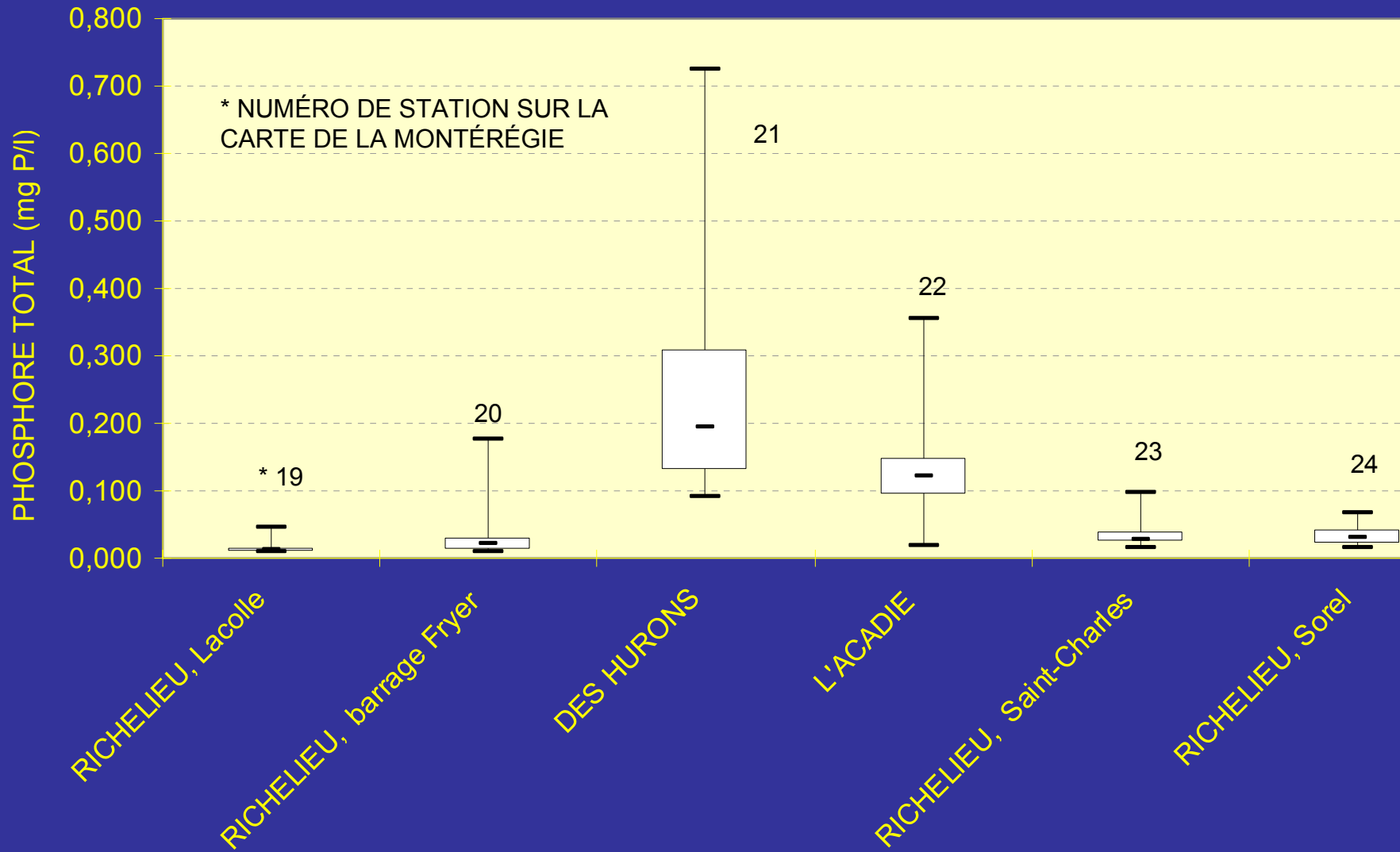


# BASSIN DE LA RIVIÈRE CHÂTEAUGUAY

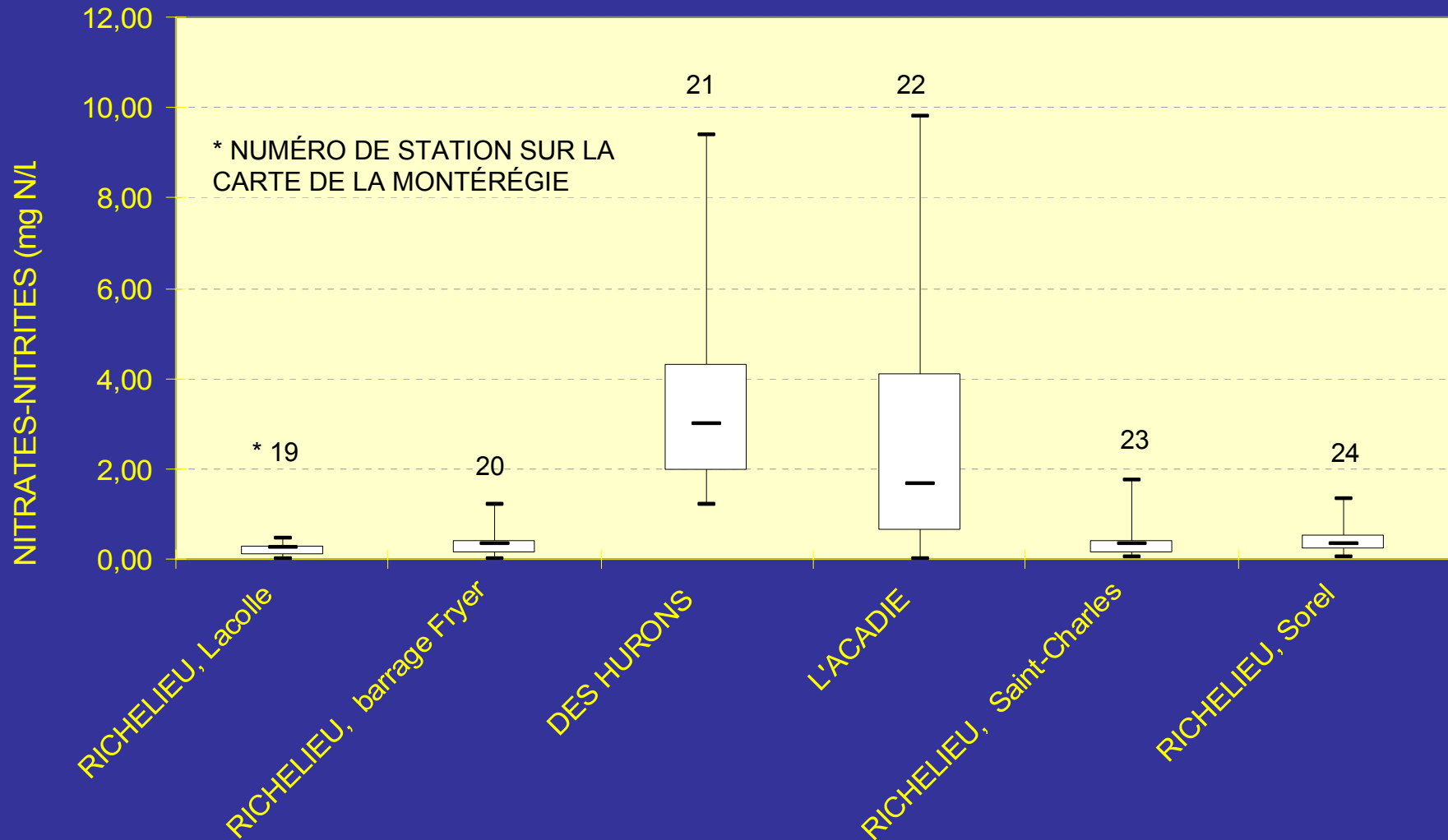




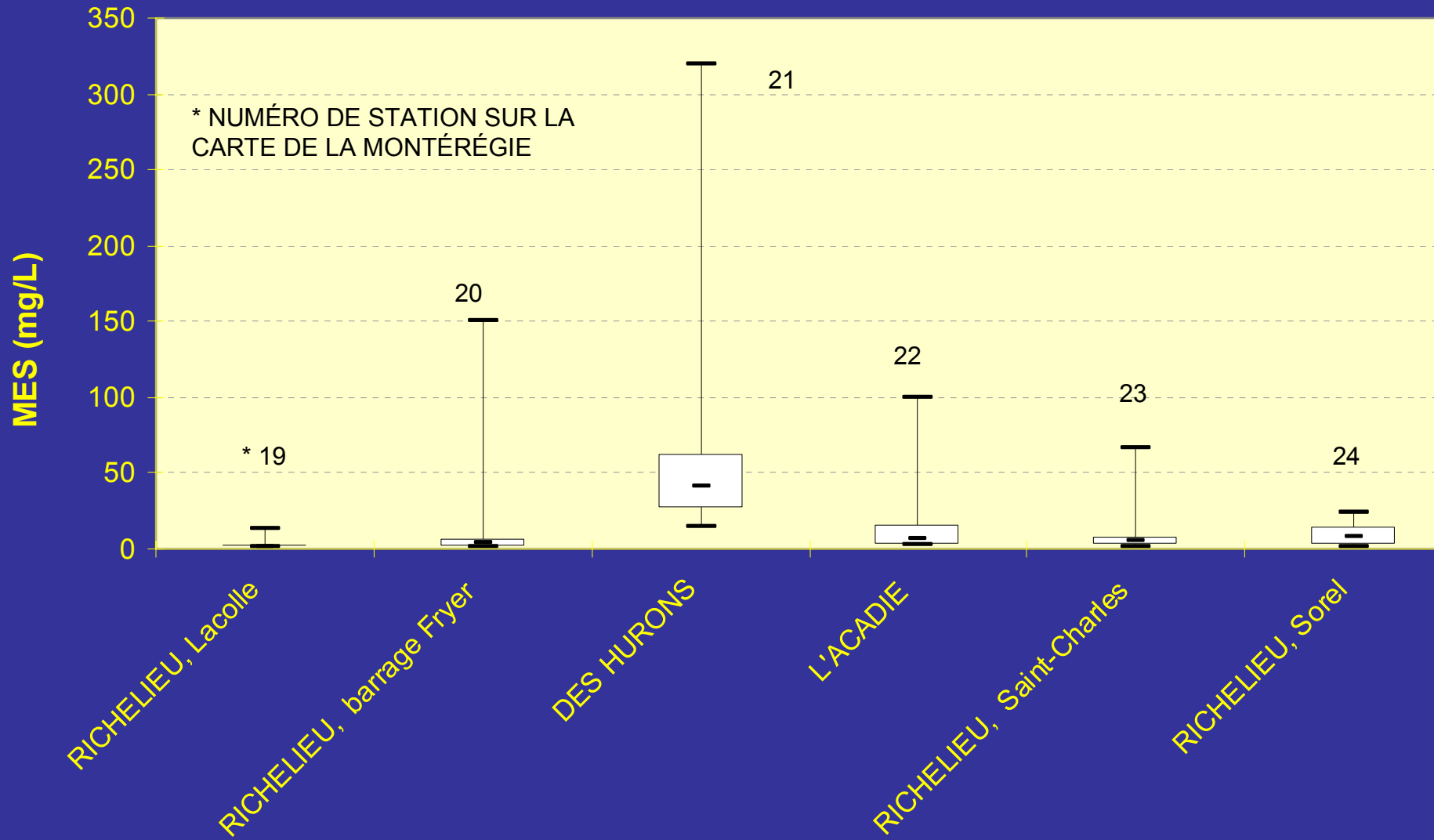
# BASSIN DE LA RIVIÈRE RICHELIEU



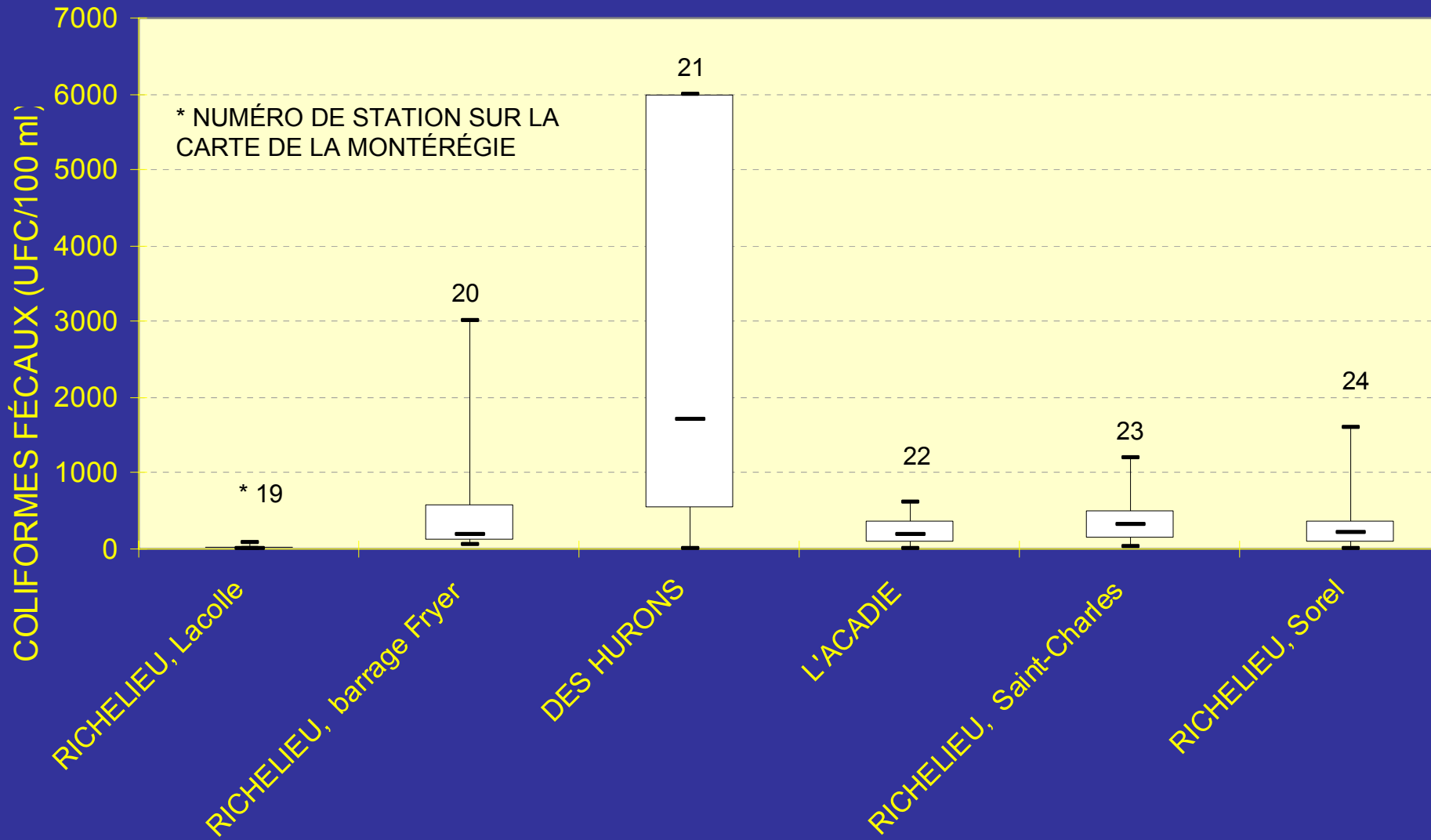
# BASSIN DE LA RIVIÈRE RICHELIEU



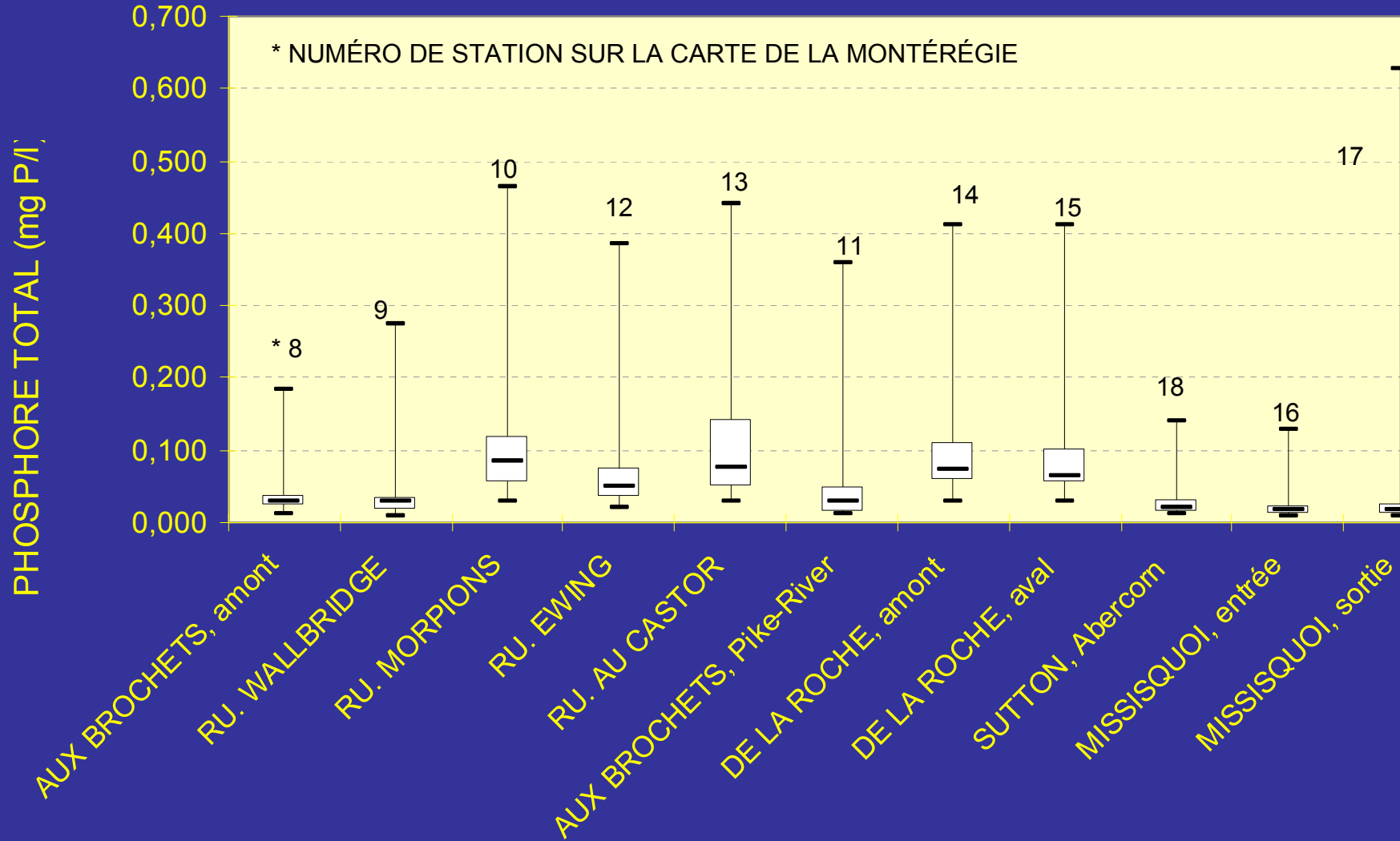
# BASSIN DE LA RIVIÈRE RICHELIEU



# BASSIN DE LA RIVIÈRE RICHELIEU



# BASSIN DE LA BAIE MISSISQUOI



# BASSIN DE LA RIVIÈRE YAMASKA

