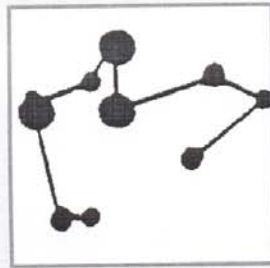


ANNEXE 11

Méthode d'évaluation de la qualité des gouttes issues d'un arrosage

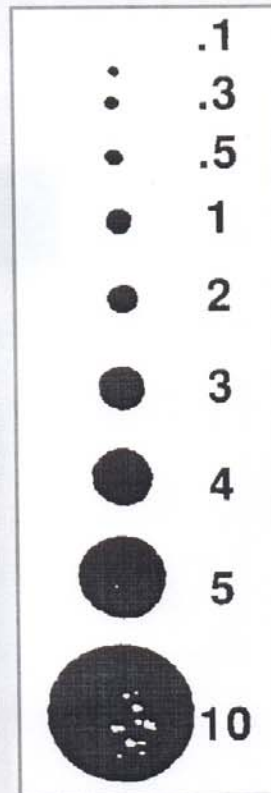
HERBICIDE SPRAY PATTERNS EVALUATION BASED ON EFFICACY (CONTINUED)



METHOD FOR COUNTING DOTS

Ideal Patterns based on Treatment Efficacy

- 70 or more droplets per sq. in.
- most droplets 0.7 to 2.2 mm
- no droplets > 7 mm
- few droplets < 3 mm
- outside buffer zone, no droplets on non-target area cards



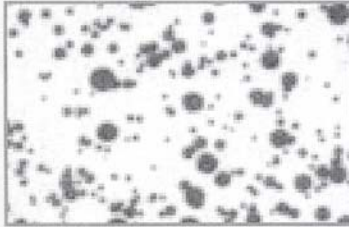
DROPLET SIZE
(millimetres)

Source: Modified from: Handbook on Aerial Application of Herbicides. USDA Forest Service (1983) R-5 FSH 2109.21

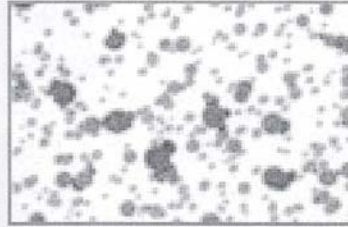
Notes:

HERBICIDE SPRAY PATTERNS: AERIAL APPLICATION NOZZLES
USED IN B.C

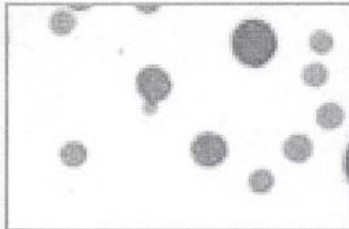
TYPICAL SPRAY PATTERNS* OF SOME NOZZLES USED FOR
AERIAL HERBICIDE APPLICATION IN B.C.



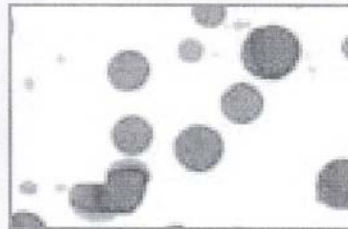
D8-46



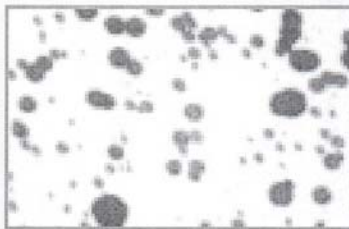
D10-46



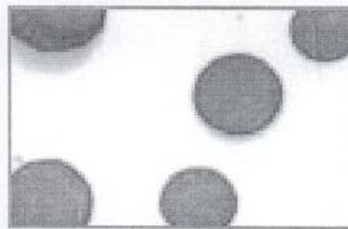
Accuflo® 0.016-64



Accuflo® 0.028-32



CP® 0.125 COARSE



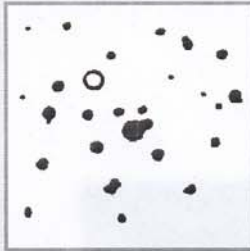
Thru-Valve Boom (TVB)

* **Note:** Taken around Swath Centre

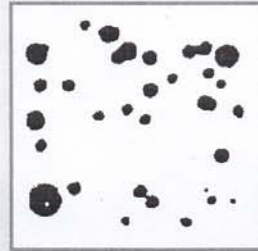
HERBICIDE SPRAY PATTERNS EVALUATION BASED ON EFFICACY



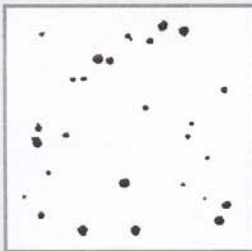
A. SIZE GOOD
DENSITY EXCELLENT



B. SIZE EXCELLENT
DENSITY GOOD



C. SIZE GOOD
DENSITY GOOD



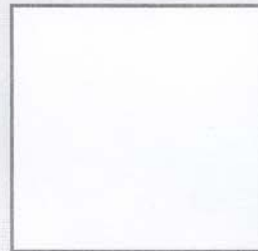
D. SIZE GOOD
DENSITY FAIR



CUT OUT
HERE
ONE SQUARE
INCH

PROCEDURE:

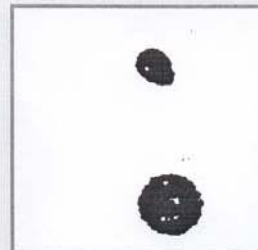
- place spray deposit card beneath this page.
- compare spray deposits with examples from this page.
- record evaluation



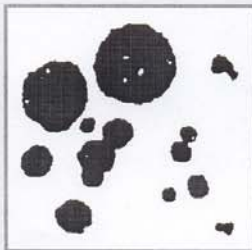
E. IDEAL PATTERN FOR
NON-TARGET AREAS



F. SIZE GOOD
DENSITY POOR



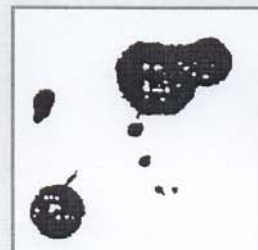
G. SIZE FAIR
DENSITY POOR



H. SIZE POOR
DENSITY GOOD



I. SIZE FAIR
DENSITY FAIR



J. SIZE POOR
DENSITY POOR