



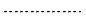
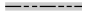







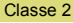
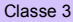

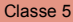
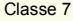


COMPOSANTES DU PROJET / PROJECT COMPONENTS

Zone d'étude régionale (ZER)		Regional assessment area (RAA)
Station de comptage au point de livraison		Delivery meter station
Tracé		Route
Station de pompage		Pump station
Chemin d'accès à la station de pompage		Access road to pump station

REPÈRES GÉOGRAPHIQUES / GEOGRAPHICAL LANDMARKS

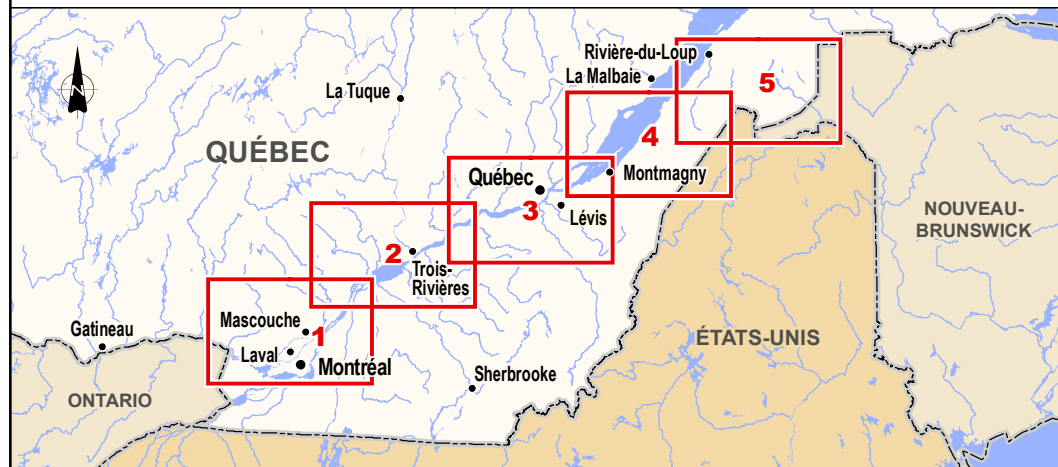
Frontière		Boundary
Autoroute		Highway
Route nationale		National road
Établissement amérindien		Indian reserve or settlement
Aéroport international		International airport
Municipalité		Municipality

POTENTIEL AGRICOLE DES SOLS **/
 SOIL CAPABILITY FOR AGRICULTURE** ****

Sol comportant de faibles limitations		Classe 2	Soil with few limitations
Sol comportant des limitations modérées		Classe 3	Soil with moderate limitations
Sol comportant de graves limitations		Classe 4	Soil with severe limitations
Sol comportant des limitations très graves		Classe 5	Soil with very severe limitations
Sol inutilisable pour la culture		Classe 7	Soil with no capability for arable culture
Sol organique		Classe 0	Organic soil
Donnée non disponible			Data not available

NOTES / NOTES

Les classes 1 et 6 sont absentes dans la zone d'étude étendue.	*	Classes 1 and 6 are absent in the extended assessment area.
Seuls les potentiels de sol dominants sont représentés.	**	Only the dominant soil capabilities are represented.



Plan de localisation / Location Map

SOURCES / REFERENCES

- RNCan (BNDT 250k, hydrographie) 2010.
- MRN (BDGA 1M, réseau routier) 2010.
- MRN (BDGA 1M, découpages administratifs) 2012.
- MRN (BDGA 1M, pôles d'occupation) 2010.
- RNCan (BNDT 50k et 250k, pôles d'occupation) 2010.
- ARDA (Inventaires des terres du Canada 50k, agriculture) 2001-2004.

**OLÉODUC ÉNERGIE EST
 ENERGY EAST PIPELINE**

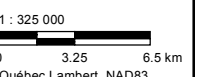


Figure 3-4

**Potentiel agricole
 Soil Capability for Agriculture**

Cartographie / Cartography:
 Chargé de projet / Project Manager:
 Date : 2015-08-27

Anne-Marie Marquis
 Claude Veilleux, ing. & agr.
 Dossier : 3390-141



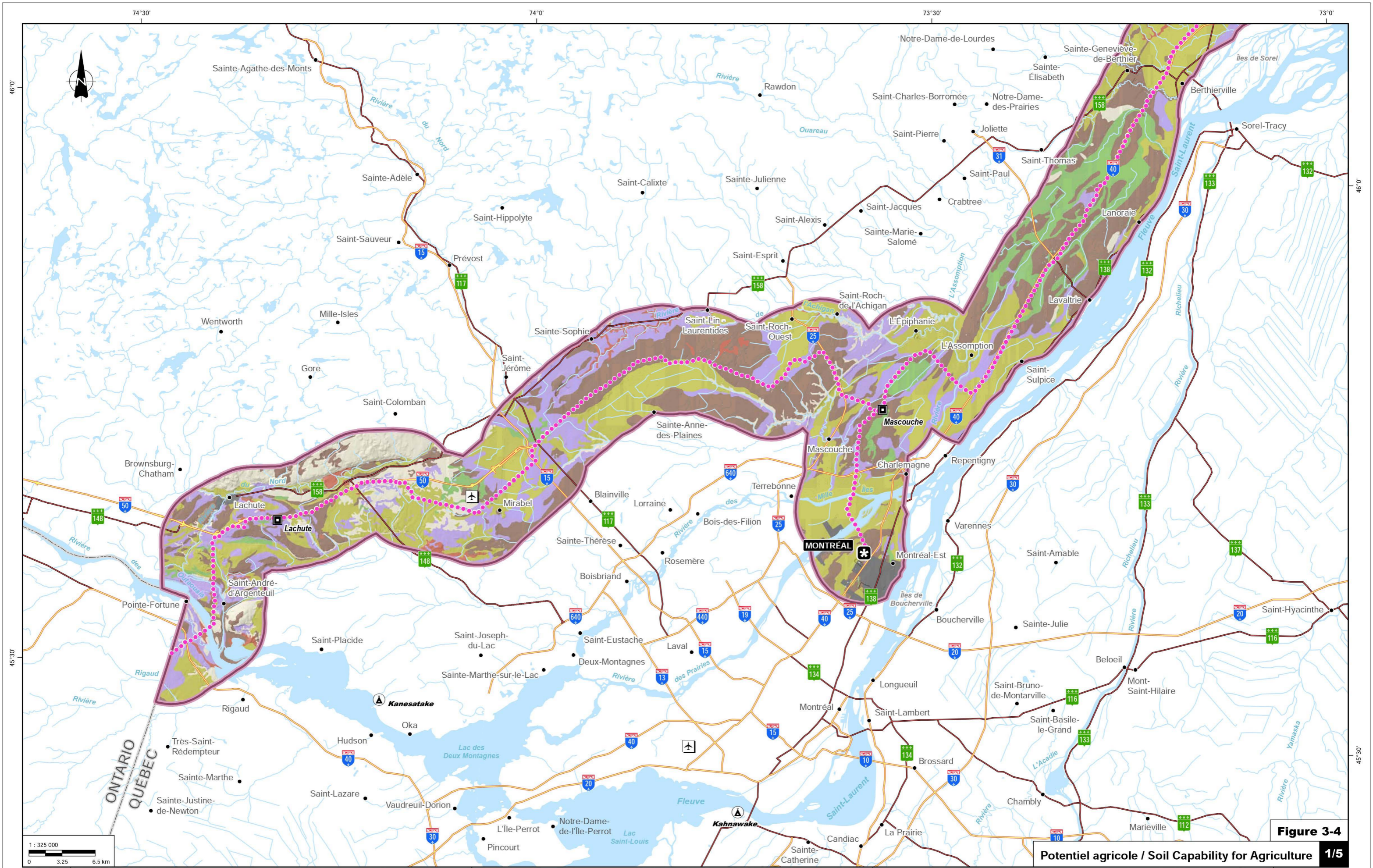


Figure 3-4

Potentiel agricole / Soil Capability for Agriculture 1/5

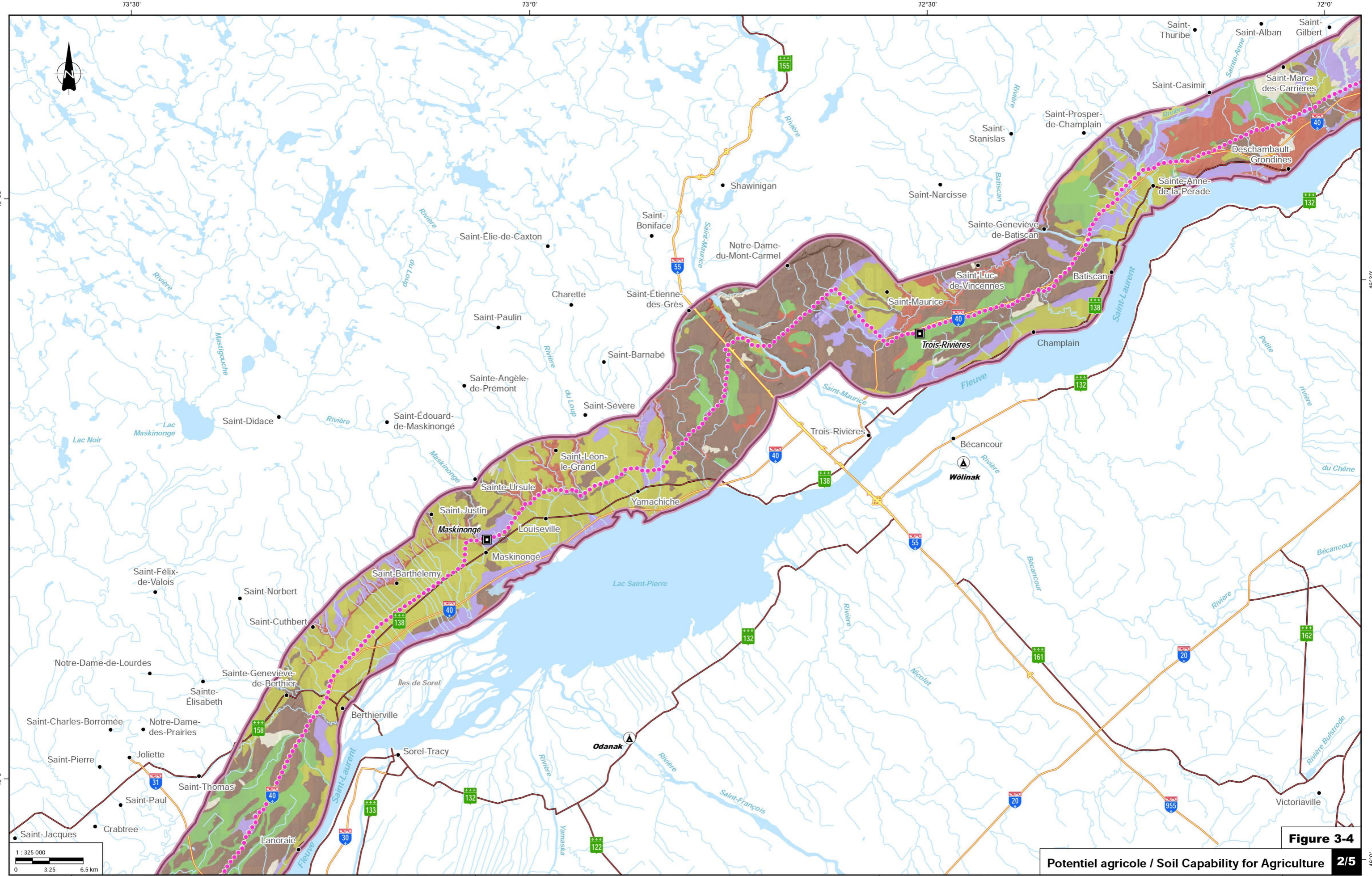


Figure 3-4

Potentiel agricole / Soil Capability for Agriculture 2/5

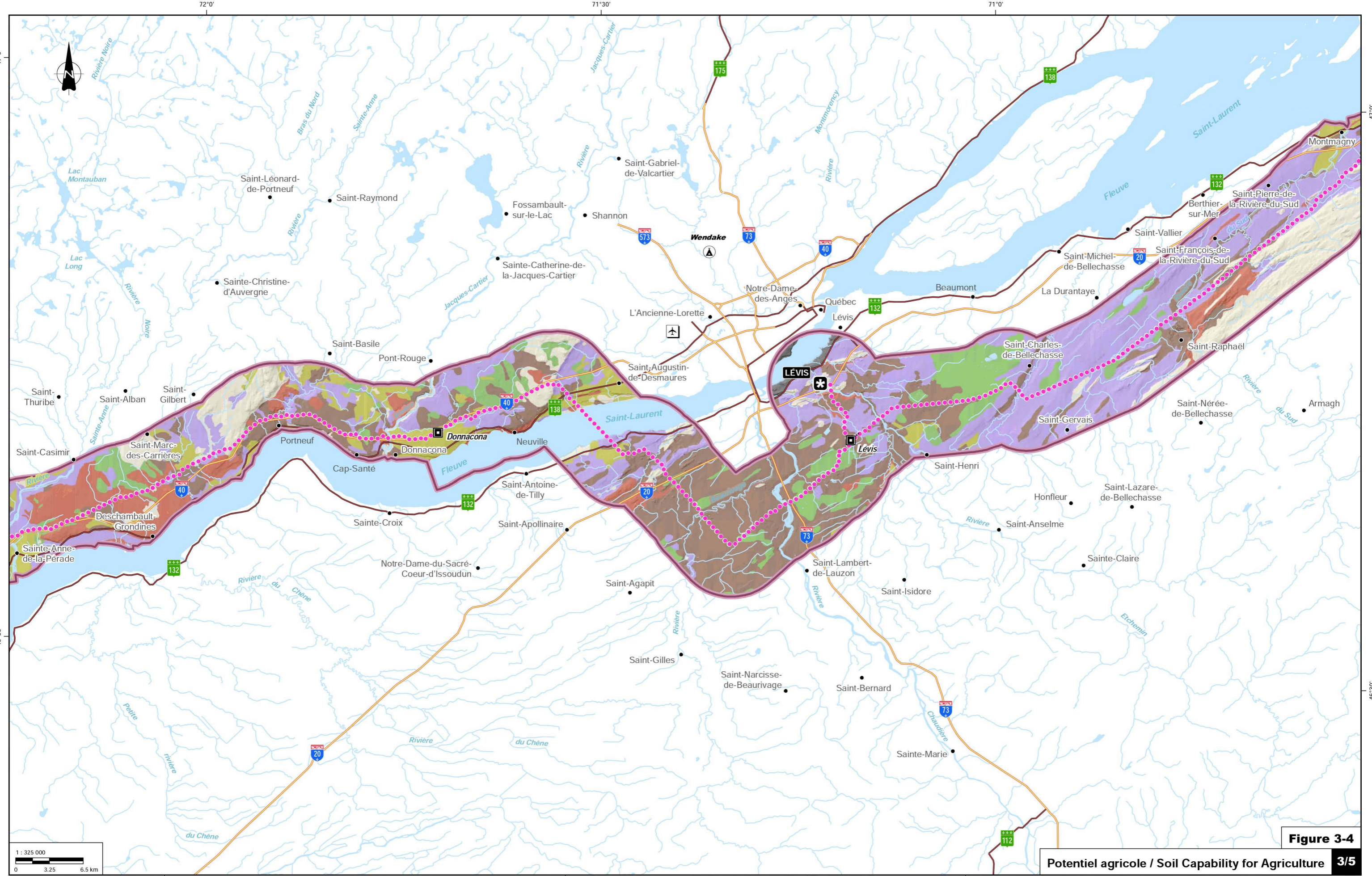


Figure 3-4

Potentiel agricole / Soil Capability for Agriculture 3/5

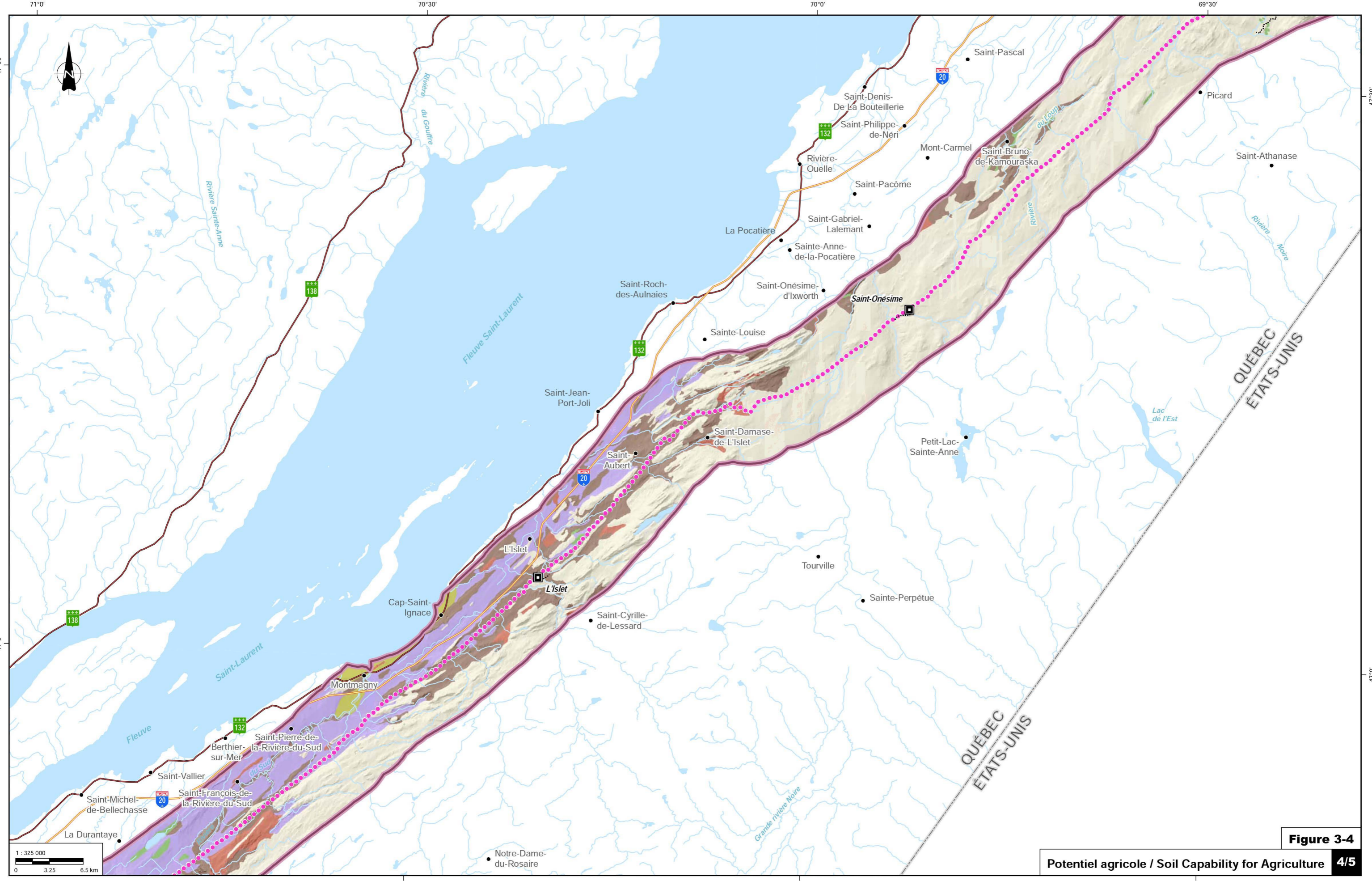


Figure 3-4

Potentiel agricole / Soil Capability for Agriculture 4/5

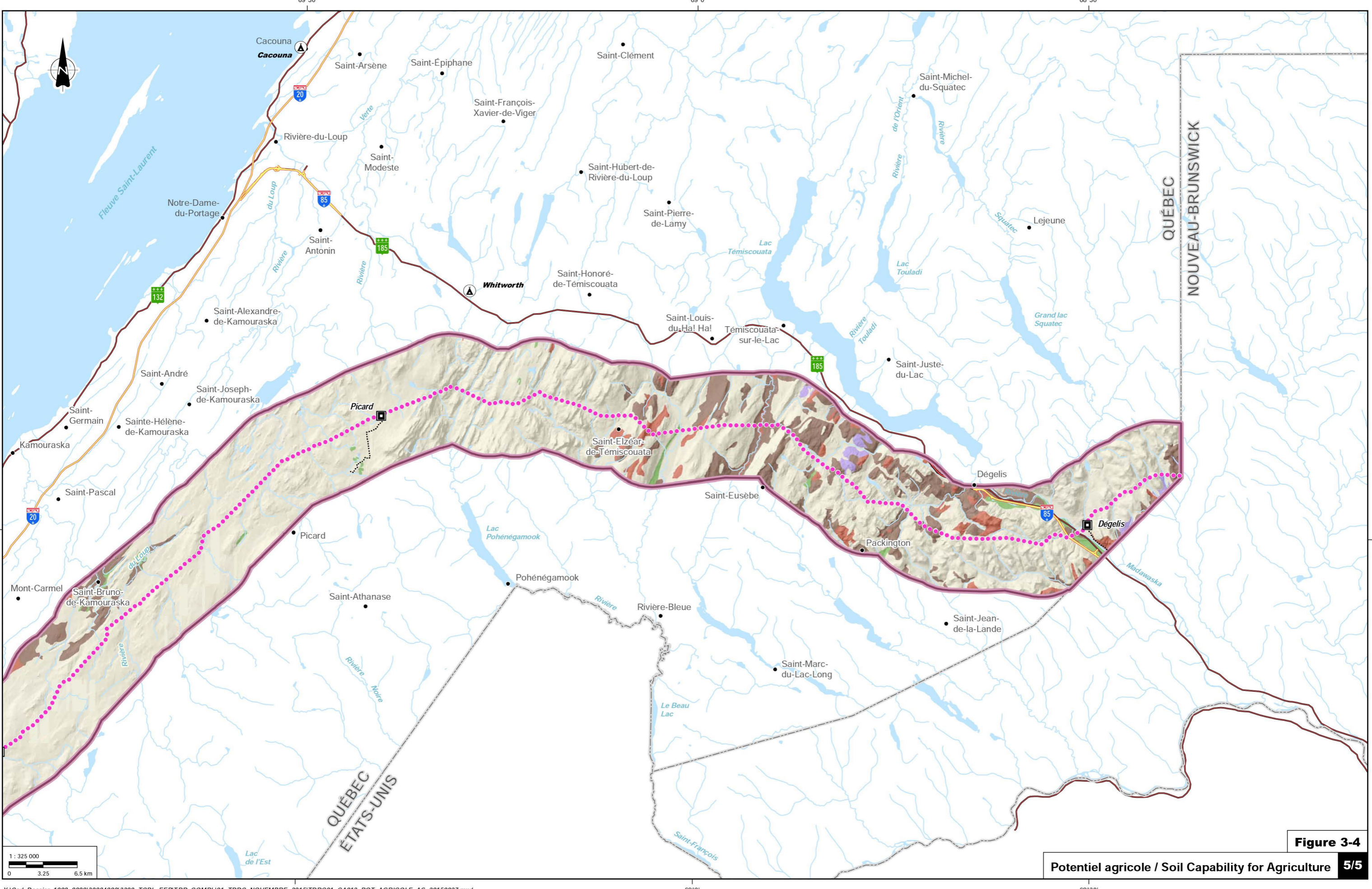


Figure 3-4

Potentiel agricole / Soil Capability for Agriculture 5/5

