

Service Layer Credits: Source: Esri, DigitalGlobe, GeoEye, Earthstar Geographics, CNES/Airbus DS, USDA, USGS, AeroGRID, IGN, JEP, swisstopo, and the GIS User Community

AERIAL PHOTOGRAPHY DATE / DATE DES PHOTOGRAPHIES AÉRIENNES: 2008 - 2012

THE CURRENT VIEW OF THE FACILITY IS APPROXIMATE. FACILITY SIZE AND ORIENTATION WILL BE FURTHER REFINED DURING DETAILED ENGINEERING TO AVOID OVERLAP WITH EXISTING ROADS AND OTHER INFRASTRUCTURE, AND TO ALIGN WITH PROPERTY BOUNDARIES BASED ON DISCUSSIONS WITH POTENTIALLY AFFECTED LANDOWNERS.

PERMANENT ACCESS ROAD TO THE FACILITY IS PRELIMINARY AND WILL BE REFINED DURING DETAILED ENGINEERING DESIGN.

LEGEND / LÉGENDE

- WATERCOURSE FISH HABITAT / COURS D'EAU REPRÉSENTANT UN HABITAT DE POISSON
- WATERCOURSE NOT FISH HABITAT / COURS D'EAU NE REPRÉSENTANT PAS UN HABITAT DE POISSON
- WILDLIFE FEATURE / ÉLÉMENTS FAUNTIQUES
- ECOLOGICAL COMMUNITY OF MANAGEMENT CONCERN / COMMUNAUTÉ ÉCOLOGIQUE D'INTÉRÊT POUR LA CONSERVATION
- GOLDEN WINGED WARBLER CRITICAL HABITAT / HABITAT ESSENTIEL DE LA PARULINE À AILES DORÉES
- WETLAND / MILIEU HUMIDE
- ACCESS ROAD - EXISTING / CHEMIN D'ACCÈS - EXISTANT
- ACCESS ROAD - NEW / CHEMIN D'ACCÈS - NOUVEAU
- CONVERSION PIPELINE / PIPELINE DE CONVERSION
- NEW PIPELINE / NOUVEAU PIPELINE
- PRESSURE CONTROL STATION / STATION DE CONTRÔLE DE LA PRESSION
- PUMP STATION WITH ELECTRIC POWER / STATION DE POMPAGE ALIMENTÉE À L'ÉLECTRICITÉ
- PUMP STATION WITH GAS TURBINE GENERATED POWER / STATION DE POMPAGE ALIMENTÉE AU GAZ
- SILT FENCE LOCATION / BARRIÈRE À SÉDIMENTS
- TANK TERMINAL FENCE BOUNDARY / LIMITE DE LA CLÔTURE DU TERMINAL DE RÉSERVOIRS
- PROVINCIAL PARK / PARC PROVINCIAL

ADJACENT LAND USE / UTILISATION DU SOL LAND OWNERSHIP / TENURE DES TERRES	CULTIVATED PRIVATE CVA/2	324 Projet Oléoduc Énergie Est de TransCanada – section québécoise 6211-18-018
DESCRIPTION / DESCRIPTION	1. STRIP TO DEPTH / 25 CM 2. STRIPPING UP TO 15 CM FOR WETLANDS 3. PLACE IN PERMANENT STOCK PILE IN DESIGNATED LOCATION. CONTOUR TO A STABLE PROFILE. 4. WHERE BOTH FORESTED AND CULTIVATED LAND-USE IS ENCOUNTERED WITHIN THE FOOTPRINT, SURFACE MATERIALS AND/ OR TOPSOIL CONSERVED SHALL BE PLACED AND CONTOURED IN A SINGLE PERMANENT STOCKPILE. CARE SHALL BE TAKEN TO MINIMIZE MIXING OF THE SURFACE MATERIALS AND/ OR TOPSOIL PILES DURING PLACEMENT AND CONTOURING. 5. WHERE OPEN WATER OR SATURATED SOILS ARE ENCOUNTERED THAT PRECLUDE PRACTICAL SOIL/ SURFACE MATERIALS SALVAGE, AS DETERMINED BY THE EI, STRIPPING IN THESE AREAS IS NOT REQUIRED.	
SPECIAL MATERIALS HANDLING / MANUTENTION PARTICULIÈRE DU MATÉRIEL ³	NO SPECIAL MATERIAL HANDLING REQUIRED.	
VEGETATION AND WETLAND / VÉGÉTATION ET MILIEU HUMIDE	MB-0048, MB-0050, MB-0055, MB-0056, MB-0059, MB-0063, MB-0071, MB-0072, MB-0073 & MB-0074; WETLAND COMPENSATION MAY BE REQUIRED FOR PERMANENT CHANGES TO WETLANDS WITHIN THE SITE FOOTPRINT.	
WILDLIFE / FAUNE	AVOID CONSTRUCTION DURING THE NESTING PERIOD FOR MIGRATORY BIRDS (APRIL 1 TO AUGUST 31), WHERE POSSIBLE. WHERE NOT POSSIBLE, IMPLEMENT THE BIRD NEST MITIGATION PLAN.	
FISHERIES / FAUNE AQUATIQUE	NO WATERCOURSES OR FISHERIES RESOURCES IDENTIFIED.	
HISTORICAL RESOURCE / POTENTIEL ARCHÉOLOGIQUE	NO HISTORICAL RESOURCES IDENTIFIED.	
PALAEONTOLOGICAL RESOURCE / SITE D'INTÉRÊT PALÉONTOLOGIQUE	NO PALAEONTOLOGICAL RESOURCES IDENTIFIED.	
OTHER CONSTRUCTION CONSIDERATIONS / AUTRES CONSIDÉRATIONS RELIÉE À LA CONSTRUCTION	POTENTIAL RISK FOR HIGH WIND EROSION OF EXPOSED SOILS. SEE SOIL EROSION CONTINGENCY PLAN. MAINTAIN SURFACE WATER DRAINAGE AROUND THE PERIMETER BASED ON FINAL GRADE.	
ACCESS CONTROL / OTHER / GESTION DES ACCÈS / AUTRES	NO ACCESS CONTROL REQUIRED	
EROSION AND SEDIMENT CONTROL / CONTRÔLE DE L'ÉROSION ET DES SÉDIMENTS	TEMPORARY SILT FENCE LOCATION TO BE FIELD VERIFIED BY THE ENVIRONMENTAL INSPECTOR.	
RECLAMATION / REMISE EN ÉTAT	SEED PERMANENT TOPSOIL/SURFACE MATERIALS STOCKPILES, AND STABILIZE AS REQUIRED TO PREVENT EROSION, SEED MIX TO BE DETERMINED.	

RESOURCES AND CONSTRUCTION MITIGATION MEASURES / RESSOURCES ET MESURES D'ATTÉNUATION EN PÉRIODE DE CONSTRUCTION

SOIL DESCRIPTION /
DESCRIPTION DU SOL

SLOPE CLASS /
CLASSE DE
PENTE

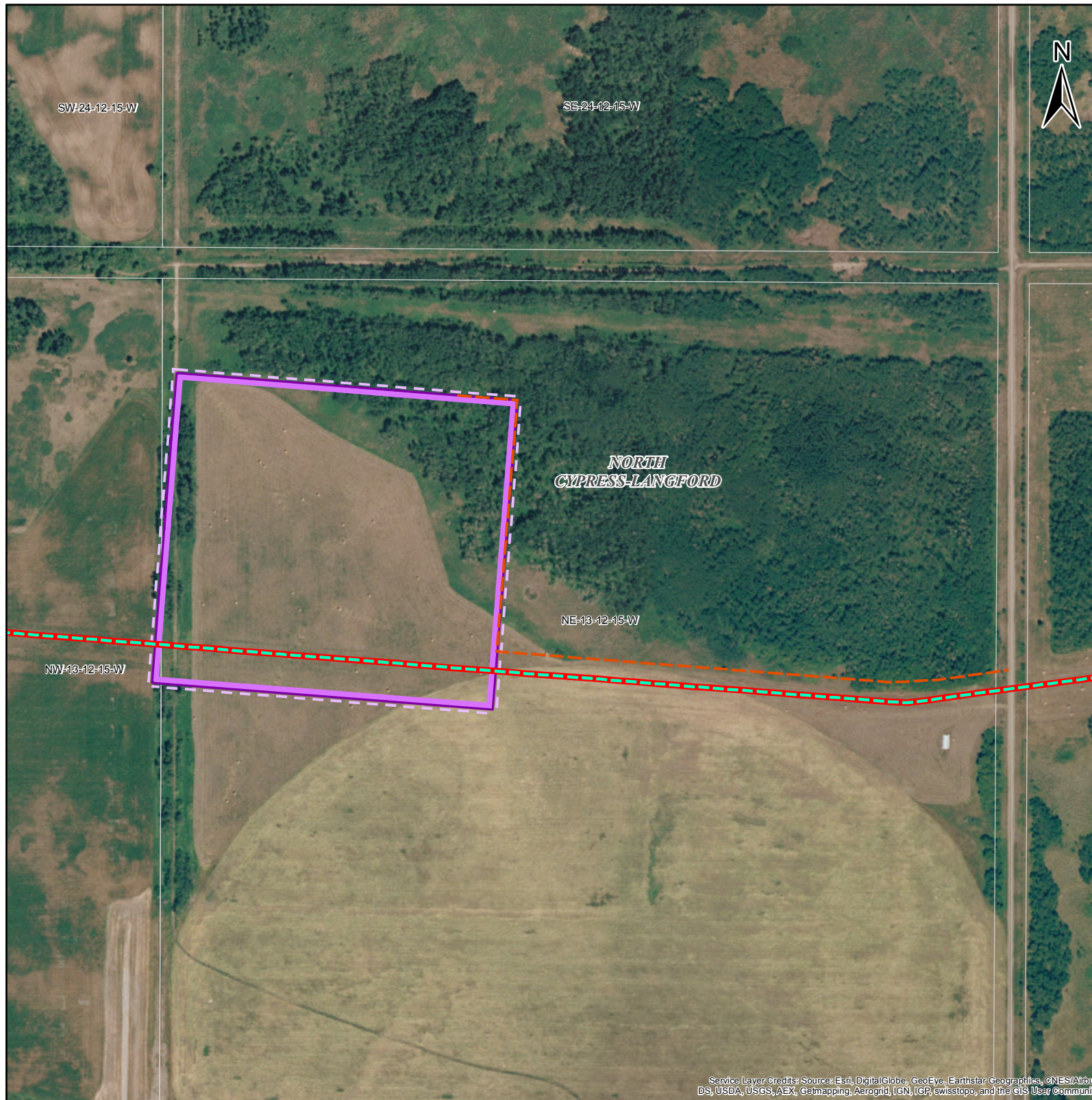
PHASE / PHASE

SOIL SERIES /
SÉRIE DE SOLS

FOOTNOTES / NOTES:

- REFER TO THE ENVIRONMENTAL PROTECTION PLAN FOR A COMPLETE UNDERSTANDING OF THE MITIGATION REQUIREMENTS FOR THE PROJECT. / SE RÉFÉRER AU PLAN DE PROTECTION DE L'ENVIRONNEMENT POUR UNE COMPRÉHENSION EXHAUSTIVE DES MESURES D'ATTÉNUATION LIÉES AU PROJET.
- SOILS SALVAGED FROM THE DEVELOPMENT FOOTPRINT SHOULD BE BASED ON THE DESIGN, LAYOUT AND CORRESPONDING SPACE REQUIREMENTS, INCLUDING ROADS, DITCHES, SITE DRAINAGE / WATER CONTROLS, ETC. REFER TO APPLICABLE PLOT PLANS, CIVIL DRAWINGS. / LA PRÉSERVATION DU SOL LIÉE AU DÉVELOPPEMENT DE LA ZONE D'IMPLANTATION DU PROJET DEVRAIT ÊTRE ÉTABLIE SELON LA CONCEPTION, LA CONFIGURATION ET L'ESPACE REQUIS (INCLUANT LES ROUTES, LES FOSSÉS, LES POSTES DE RÉGULATION DU DRAINAGE ET DE L'ÉCOULEMENT DE L'EAU, ETC.). SE RÉFÉRER AUX PLANS D'AMÉNAGEMENT ET AUX DESSINS DE GÉNIE CIVIL PERTINENTS.
- EXAMPLES: ACID ROCK DRAINAGE (ARD), CONTAMINATED SOILS, CONTAMINATED WATER. / EXEMPLES: DRAINAGE ACIDE (DA), SOLS CONTAMINÉS, EAU CONTAMINÉE.

SHEET REVISION / N° RÉVISION REV_A 20151130	INTERNAL ID / IDENTIFIANT INTERNE 1	PROJECTION / PROJECTION UTM ZONE 14	GATUM / SYSTÈME GÉODÉSIQUE NAD 83	PREPARED BY / PRÉPARE PAR
Sources: Project data and high resolution imagery provided by TransCanada Pipelines Limited. Base data provided by the Governments of Canada, Alberta, Saskatchewan, Manitoba and Ontario. / Sources: Les données spécifiques à ce projet et images à haute résolution sont fournies par TransCanada Pipelines Limited. Les données de base sont fournies par les gouvernements du Canada, de l'Alberta, de la Saskatchewan, du Manitoba et de l'Ontario.		DATE / DATE 20151123	PREPARED FOR / PRÉPARE POUR 	
<p>ENERGY EAST PIPELINE PROJECT / PROJET OLÉODUC ÉNERGIE EST</p> <p>Environmental Figure / Figure des considérations environnementales</p> <p>Manitoba Pump Station / Station de pompage</p> <p>19-Rapid City</p> <p>Page / Page 3 of / de 9</p>				



Service Layer Credits: Source: Esri, DigitalGlobe, GeoEye, Earthstar Geographics, CNES/Airbus DS, USDA, USGS, AEX, Getmapping, Aerogrid, IGN, IGP, swisstopo, and the GIS User Community

AERIAL PHOTOGRAPHY DATE / DATE DES PHOTOGRAPHIES AÉRIENNES: 2008 - 2012

THE CURRENT VIEW OF THE FACILITY IS APPROXIMATE. FACILITY SIZE AND ORIENTATION WILL BE FURTHER REFINED DURING DETAILED ENGINEERING TO AVOID OVERLAP WITH EXISTING ROADS AND OTHER INFRASTRUCTURE, AND TO ALIGN WITH PROPERTY BOUNDARIES BASED ON DISCUSSIONS WITH POTENTIALLY AFFECTED LANDOWNERS.

PERMANENT ACCESS ROAD TO THE FACILITY IS PRELIMINARY AND WILL BE REFINED DURING DETAILED ENGINEERING DESIGN.

LEGEND / LÉGENDE			
	WATERCOURSE FISH HABITAT / COURS D'EAU REPRÉSENTANT UN HABITAT DE POISSON		PUMP STATION WITH ELECTRIC POWER / STATION DE POMPAGE ALIMENTÉE À L'ÉLECTRICITÉ
	WATERCOURSE NOT FISH HABITAT / COURS D'EAU NE REPRÉSENTANT PAS UN HABITAT DE POISSON		PUMP STATION WITH GAS TURBINE GENERATED POWER / STATION DE POMPAGE ALIMENTÉE AU GAZ
	WILDLIFE FEATURE / ÉLÉMENTS FAUNTIQUES		SILT FENCE LOCATION / BARRIÈRE À SÉDIMENTS
	ECOLOGICAL COMMUNITY OF MANAGEMENT CONCERN / COMMUNAUTÉ ÉCOLOGIQUE D'INTÉRÊT POUR LA CONSERVATION		TANK TERMINAL FENCE BOUNDARY / LIMITE DE LA CLÔTURE DU TERMINAL DE RÉSERVOIRS
	GOLDEN WINGED WARBLER CRITICAL HABITAT / HABITAT ESSENTIEL DE LA PARULINE À AILES DORÉES		PROVINCIAL PARK / PARC PROVINCIAL
	WETLAND / MILIEU HUMIDE		PRESSURE CONTROL STATION / STATION DE CONTRÔLE DE LA PRESSION
	ACCESS ROAD - EXISTING / CHEMIN D'ACCÈS - EXISTANT		
	ACCESS ROAD - NEW / CHEMIN D'ACCÈS - NOUVEAU		
	CONVERSION PIPELINE / PIPELINE DE CONVERSION		
	NEW PIPELINE / NOUVEAU PIPELINE		

ADJACENT LAND USE / UTILISATION DU SOL LAND OWNERSHIP / TENURE DES TERRES		CULTIVATED PRIVATE
SOIL / SOL SALVAGE INFORMATION / INFORMATION RELATIVE À LA PRÉSERVATION DU SOL	DESCRIPTION / DESCRIPTION	HAL/1
		1. STRIP TO COLOUR CHANGE / 20 TO 25 CM 2. PLACE IN PERMANENT STOCK PILE IN DESIGNATED LOCATION. CONTOUR TO A STABLE PROFILE. 3. WHERE BOTH FORESTED AND CULTIVATED LAND-USE IS ENCOUNTERED WITHIN THE FOOTPRINT, SURFACE MATERIALS AND/ OR TOPSOIL CONSERVED SHALL BE PLACED AND CONTOURED IN A SINGLE PERMANENT STOCKPILE. CARE SHALL BE TAKEN TO MINIMIZE MIXING OF THE SURFACE MATERIALS AND/ OR TOPSOIL PILES DURING PLACEMENT AND CONTOURING. 4. WHERE OPEN WATER OR SATURATED SOILS ARE ENCOUNTERED THAT PRECLUDE PRACTICAL SOIL/ SURFACE MATERIALS SALVAGE, AS DETERMINED BY THE EI, STRIPPING IN THESE AREAS IS NOT REQUIRED.
	SPECIAL MATERIALS HANDLING / MANUTENTION PARTICULIÈRE DU MATÉRIEL	NO SPECIAL MATERIAL HANDLING REQUIRED.
	VEGETATION AND WETLAND / VÉGÉTATION ET MILIEU HUMIDE	NO VEGETATION OR WETLAND RESOURCES IDENTIFIED.
WILDLIFE / FAUNE		AVOID CONSTRUCTION DURING THE NESTING PERIOD FOR MIGRATORY BIRDS (APRIL 1 TO AUGUST 31), WHERE POSSIBLE. WHERE NOT POSSIBLE, IMPLEMENT THE BIRD NEST MITIGATION PLAN.
FISHERIES / FAUNE AQUATIQUE		NO WATERCOURSES OR FISHERIES RESOURCES IDENTIFIED.
HISTORICAL RESOURCE / POTENTIEL ARCHÉOLOGIQUE		NO HISTORICAL RESOURCES IDENTIFIED.
PALAEONTOLOGICAL RESOURCE / SITE D'INTÉRÊT PALÉONTOLOGIQUE		NO PALAEONTOLOGICAL RESOURCES IDENTIFIED.
OTHER CONSTRUCTION CONSIDERATIONS / AUTRES CONSIDÉRATIONS RELIÉE À LA CONSTRUCTION		NO SPECIAL CONSTRUCTION CONSIDERATIONS FOR THIS SITE.
ACCESS CONTROL / OTHER / GESTION DES ACCÈS / AUTRES		NO ACCESS CONTROL REQUIRED
EROSION AND SEDIMENT CONTROL / CONTRÔLE DE L'ÉROSION ET DES SÉDIMENTS		TEMPORARY SILT FENCE LOCATION TO BE FIELD VERIFIED BY THE ENVIRONMENTAL INSPECTOR.
RECLAMATION / REMISE EN ÉTAT		SEED PERMANENT TOPSOIL/SURFACE MATERIALS STOCKPILES, AND STABILIZE AS REQUIRED TO PREVENT EROSION, SEED MIX TO BE DETERMINED.

RESOURCES AND CONSTRUCTION MITIGATION MEASURES / RESSOURCES ET MESURES D'ATTÉNUATION EN PÉRIODE DE CONSTRUCTION

SOIL DESCRIPTION / DESCRIPTION DU SOL

SLOPE CLASS / CLASSE DE PENTE

PHASE / PHASE

SOIL SERIES / SÉRIE DE SOLS

FOOTNOTES / NOTES:

- REFER TO THE ENVIRONMENTAL PROTECTION PLAN FOR A COMPLETE UNDERSTANDING OF THE MITIGATION REQUIREMENTS FOR THE PROJECT. / SE RÉFÉRER AU PLAN DE PROTECTION DE L'ENVIRONNEMENT POUR UNE COMPRÉHENSION EXHAUSTIVE DES MESURES D'ATTÉNUATION LIÉES AU PROJET.
- SOILS SALVAGED FROM THE DEVELOPMENT FOOTPRINT SHOULD BE BASED ON THE DESIGN, LAYOUT AND CORRESPONDING SPACE REQUIREMENTS, INCLUDING ROADS, DITCHES, SITE DRAINAGE / WATER CONTROLS, ETC. REFER TO APPLICABLE PLOT PLANS, CIVIL DRAWINGS / LA PRÉSERVATION DU SOL LIÉE AU DÉVELOPPEMENT DE LA ZONE D'IMPLANTATION DU PROJET DEVRAIT ÊTRE ÉTABLIE SELON LA CONCEPTION, LA CONFIGURATION ET L'ESPACE REQUIS (INCLUANT LES ROUTES, LES FOSSÉS, LES POSTES DE RÉGULATION DU DRAINAGE ET DE L'ÉCOULEMENT DE L'EAU, ETC.). SE RÉFÉRER AUX PLANS D'AMÉNAGEMENT ET AUX DESSINS DE GÉNIE CIVIL PERTINENTS.
- EXAMPLES: ACID ROCK DRAINAGE (ARD), CONTAMINATED SOILS, CONTAMINATED WATER. / EXEMPLES: DRAINAGE ACIDE (DA), SOLS CONTAMINÉS, EAU CONTAMINÉE.

SHEET REVISION / N° RÉVISION REV_A 20151130	INTERNAL ID / IDENTIFIANT INTERNE 1	PROJECTION / PROJECTION UTM ZONE 14	GATUM / SYSTÈME GÉODÉSIQUE NAD 83	PREPARED BY / PRÉPARE PAR
Sources: Project data and high resolution imagery provided by TransCanada Pipelines Limited. Base data provided by the Governments of Canada, Alberta, Saskatchewan, Manitoba and Ontario. / Sources: Les données spécifiques à ce projet et images à haute résolution sont fournies par TransCanada Pipelines Limited. Les données de base sont fournies par les gouvernements du Canada, de l'Alberta, de la Saskatchewan, du Manitoba et de l'Ontario.		DATE / DATE 20151123	PREPARED FOR / PRÉPARE POUR 	

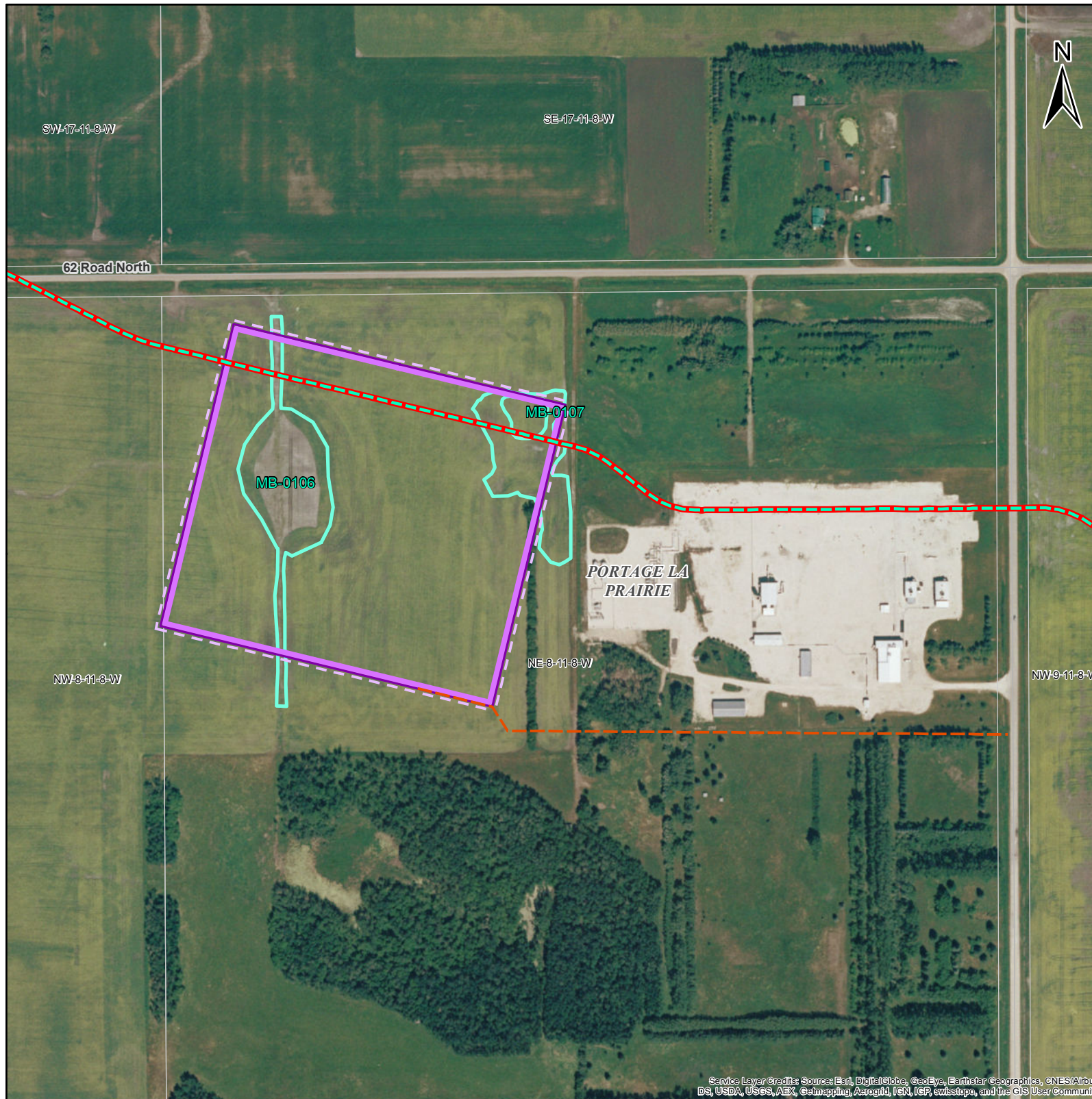
ENERGY EAST PIPELINE PROJECT / PROJET OLÉODUC ÉNERGIE EST

Environmental Figure / Figure des considérations environnementales

Manitoba Pump Station / Station de pompage

20-Wellwood

Page / Page 4 of / de 9



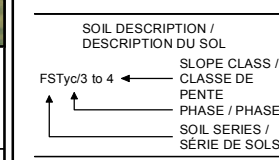
Service Layer Credits: Source: Esri, DigitalGlobe, GeoEye, Earthstar Geographics, CNES/Airbus DS, USDA, USGS, AEX, Geomapping, AerialGrid, IGN, IGN, swisstopo, and the GIS User Community

AERIAL PHOTOGRAPHY DATE / DATE DES PHOTOGRAPHIES AÉRIENNES: 2008 - 2012

THE CURRENT VIEW OF THE FACILITY IS APPROXIMATE. FACILITY SIZE AND ORIENTATION WILL BE FURTHER REFINED DURING DETAILED ENGINEERING TO AVOID OVERLAP WITH EXISTING ROADS AND OTHER INFRASTRUCTURE, AND TO ALIGN WITH PROPERTY BOUNDARIES BASED ON DISCUSSIONS WITH POTENTIALLY AFFECTED LANDOWNERS. PERMANENT ACCESS ROAD TO THE FACILITY IS PRELIMINARY AND WILL BE REFINED DURING DETAILED ENGINEERING DESIGN.

LEGEND / LÉGENDE			
	WATERCOURSE FISH HABITAT / COURS D'EAU REPRÉSENTANT UN HABITAT DE POISSON		WETLAND / MILIEU HUMIDE
	WATERCOURSE NOT FISH HABITAT / COURS D'EAU NE REPRÉSENTANT PAS UN HABITAT DE POISSON		ACCESS ROAD - EXISTING / CHEMIN D'ACCÈS - EXISTANT
	WILDLIFE FEATURE / ÉLÉMENTS FAUNTIQUES		ACCESS ROAD - NEW / CHEMIN D'ACCÈS - NOUVEAU
	ECOLOGICAL COMMUNITY OF MANAGEMENT CONCERN / COMMUNAUTÉ ÉCOLOGIQUE D'INTÉRÊT POUR LA CONSERVATION		CONVERSION PIPELINE / PIPELINE DE CONVERSION
	GOLDEN WINGED WARBLER CRITICAL HABITAT / HABITAT ESSENTIEL DE LA PARULINE À AILES DORÉES		NEW PIPELINE / NOUVEAU PIPELINE
			PUMP STATION WITH ELECTRIC POWER / STATION DE POMPAGE ALIMENTÉE À L'ÉLECTRICITÉ
			PUMP STATION WITH GAS TURBINE GENERATED POWER / STATION DE POMPAGE ALIMENTÉE AU GAZ
			SILT FENCE LOCATION / BARRIÈRE À SÉDIMENTS
			TANK TERMINAL FENCE BOUNDARY / LIMITE DE LA CLÔTURE DU TERMINAL DE RÉSERVOIRS
			PROVINCIAL PARK / PARC PROVINCIAL
			PRESSURE CONTROL STATION / STATION DE CONTRÔLE DE LA PRESSION

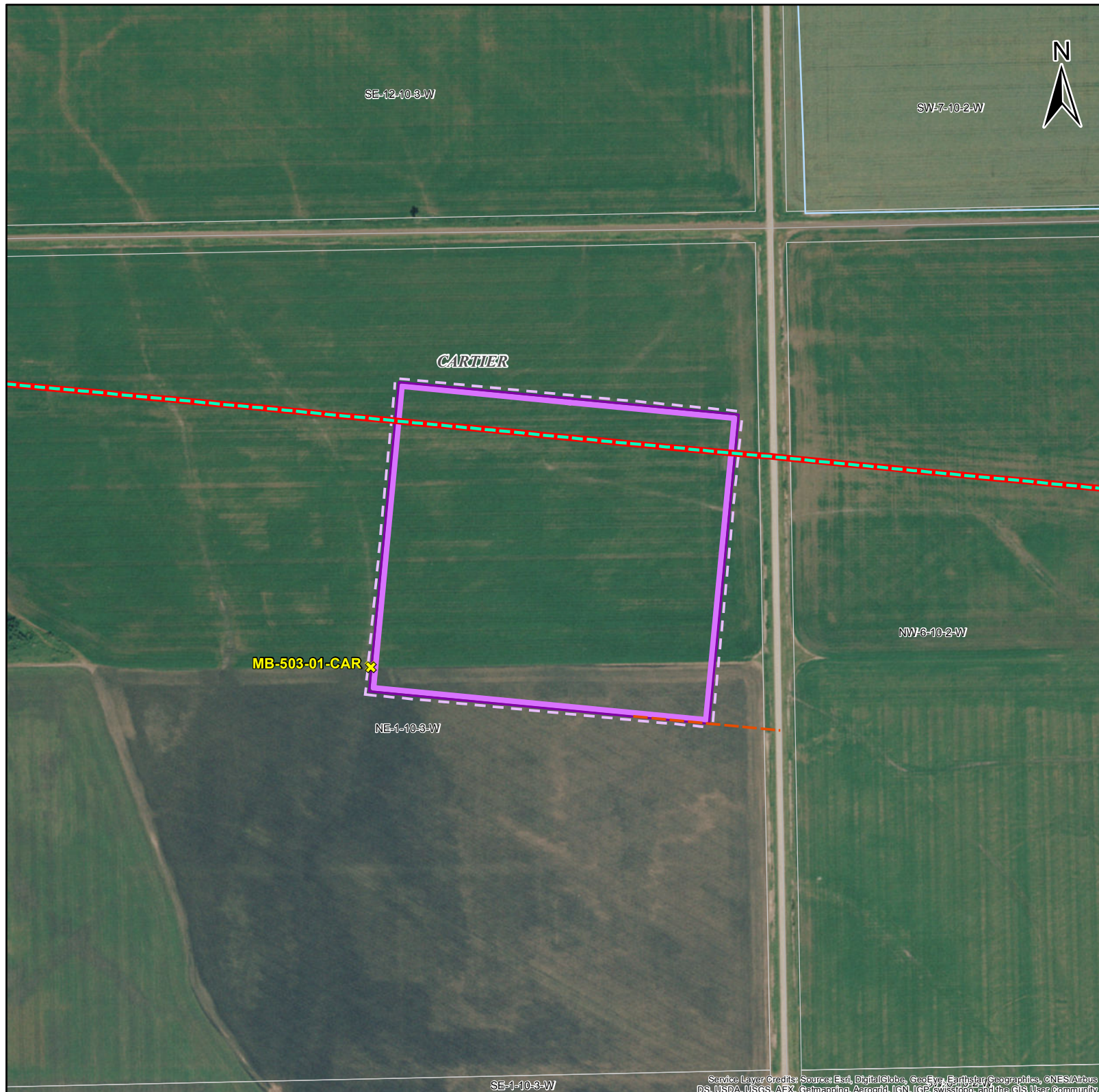
ADJACENT LAND USE / UTILISATION DU SOL LAND OWNERSHIP / TENURE DES TERRES		CULTIVATED PRIVATE
SOIL / SOL	DESCRIPTION / DESCRIPTION	WWC/1 TO 2
	SALVAGE INFORMATION / INFORMATION RELATIVE À LA PRÉSERVATION DU SOL ¹	1. STRIP TO DEPTH / 30 CM 2. STRIPPING UP TO 15 CM FOR WETLANDS 3. PLACE IN PERMANENT STOCK PILE IN DESIGNATED LOCATION. CONTOUR TO A STABLE PROFILE. 4. WHERE BOTH FORESTED AND CULTIVATED LAND-USE IS ENCOUNTERED WITHIN THE FOOTPRINT, SURFACE MATERIALS AND/ OR TOPSOIL CONSERVED SHALL BE PLACED AND CONTOURED IN A SINGLE PERMANENT STOCKPILE. CARE SHALL BE TAKEN TO MINIMIZE MIXING OF THE SURFACE MATERIALS AND/ OR TOPSOIL PILES DURING PLACEMENT AND CONTOURING. 5. WHERE OPEN WATER OR SATURATED SOILS ARE ENCOUNTERED THAT PRECLUDE PRACTICAL SOIL/ SURFACE MATERIALS SALVAGE, AS DETERMINED BY THE EI, STRIPPING IN THESE AREAS IS NOT REQUIRED.
SPECIAL MATERIALS HANDLING / MANUTENTION PARTICULIÈRE DU MATÉRIEL ²		NO SPECIAL MATERIAL HANDLING REQUIRED.
VEGETATION AND WETLAND / VÉGÉTATION ET MILIEU HUMIDE		MB-0106 & MB-0107: WETLAND COMPENSATION MAY BE REQUIRED FOR PERMANENT CHANGES TO WETLANDS WITHIN THE SITE FOOTPRINT.
WILDLIFE / FAUNE		AVOID CONSTRUCTION DURING THE NESTING PERIOD FOR MIGRATORY BIRDS (APRIL 1 TO AUGUST 31), WHERE POSSIBLE. WHERE NOT POSSIBLE, IMPLEMENT THE BIRD NEST MITIGATION PLAN.
FISHERIES / FAUNE AQUATIQUE		NO WATERCOURSES OR FISHERIES RESOURCES IDENTIFIED.
HISTORICAL RESOURCE / POTENTIEL ARCHÉOLOGIQUE		NO HISTORICAL RESOURCES IDENTIFIED.
PALAEOLOGICAL RESOURCE / SITE D'INTÉRÊT PALÉONTOLOGIQUE		NO PALAEOLOGICAL RESOURCES IDENTIFIED.
OTHER CONSTRUCTION CONSIDERATIONS / AUTRES CONSIDÉRATIONS RELIÉE À LA CONSTRUCTION		POTENTIAL RISK FOR HIGH WIND EROSION OF EXPOSED SOILS. SEE SOIL EROSION CONTINGENCY PLAN. MAINTAIN SURFACE WATER DRAINAGE AROUND THE PERIMETER BASED ON FINAL GRADE.
ACCESS CONTROL / OTHER / GESTION DES ACCÈS / AUTRES		NO ACCESS CONTROL REQUIRED
EROSION AND SEDIMENT CONTROL / CONTRÔLE DE L'ÉROSION ET DES SÉDIMENTS		TEMPORARY SILT FENCE LOCATION TO BE FIELD VERIFIED BY THE ENVIRONMENTAL INSPECTOR.
RECLAMATION / REMISE EN ÉTAT		SEED PERMANENT TOPSOIL/SURFACE MATERIALS STOCKPILES, AND STABILIZE AS REQUIRED TO PREVENT EROSION, SEED MIX TO BE DETERMINED.



FOOTNOTES / NOTES:

- REFER TO THE ENVIRONMENTAL PROTECTION PLAN FOR A COMPLETE UNDERSTANDING OF THE MITIGATION REQUIREMENTS FOR THE PROJECT. / SE RÉFÉRER AU PLAN DE PROTECTION DE L'ENVIRONNEMENT POUR UNE COMPRÉHENSION EXHAUSTIVE DES MESURES D'ATTÉNUATION LIÉES AU PROJET.
- SOILS SALVAGED FROM THE DEVELOPMENT FOOTPRINT SHOULD BE BASED ON THE DESIGN, LAYOUT AND CORRESPONDING SPACE REQUIREMENTS, INCLUDING ROADS, DITCHES, SITE DRAINAGE / WATER CONTROLS, ETC. REFER TO APPLICABLE PLOT PLANS, CIVIL DRAWINGS. / LA PRÉSERVATION DU SOL LIÉE AU DÉVELOPPEMENT DE LA ZONE D'IMPLANTATION DU PROJET DEVRAIT ÊTRE ÉTABLIE SELON LA CONCEPTION, LA CONFIGURATION ET L'ESPACE REQUIS (INCLUANT LES ROUTES, LES FOSSÉS, LES POSTES DE RÉGULATION DU DRAINAGE ET DE L'ÉCOULEMENT DE L'EAU, ETC.). SE RÉFÉRER AUX PLANS D'AMÉNAGEMENT ET AUX DESSINS DE GÉNIE CIVIL PERTINENTS.
- EXAMPLES: ACID ROCK DRAINAGE (ARD), CONTAMINATED SOILS, CONTAMINATED WATER. / EXEMPLES: DRAINAGE ACIDE (DA), SOLS CONTAMINÉS, EAU CONTAMINÉE.

SHEET REVISION / N° RÉVISION REV_A 20151130	INTERNAL ID / IDENTIFIANT INTERNE 1	PROJECTION / PROJECTION UTM ZONE 14	GATUM / SYSTÈME GÉODÉSIQUE NAD 83	PREPARED BY / PRÉPARE PAR
Sources: Project data and high resolution imagery provided by TransCanada Pipelines Limited. Base data provided by the Governments of Canada, Alberta, Saskatchewan, Manitoba and Ontario. / Sources: Les données spécifiques à ce projet et images à haute résolution sont fournies par TransCanada Pipelines Limited. Les données de base sont fournies par les gouvernements du Canada, de l'Alberta, de la Saskatchewan, du Manitoba et de l'Ontario.		DATE / DATE 20151123	PREPARED FOR / PRÉPARE POUR 	



AERIAL PHOTOGRAPHY DATE / DATE DES PHOTOGRAPHIES AÉRIENNES: 2008 - 2012

THE CURRENT VIEW OF THE FACILITY IS APPROXIMATE. FACILITY SIZE AND ORIENTATION WILL BE FURTHER REFINED DURING DETAILED ENGINEERING TO AVOID OVERLAP WITH EXISTING ROADS AND OTHER INFRASTRUCTURE, AND TO ALIGN WITH PROPERTY BOUNDARIES BASED ON DISCUSSIONS WITH POTENTIALLY AFFECTED LANDOWNERS.

PERMANENT ACCESS ROAD TO THE FACILITY IS PRELIMINARY AND WILL BE REFINED DURING DETAILED ENGINEERING DESIGN.

LEGEND / LÉGENDE			
	WATERCOURSE FISH HABITAT / COURS D'EAU REPRÉSENTANT UN HABITAT DE POISSON		WETLAND / MILIEU HUMIDE
	WATERCOURSE NOT FISH HABITAT / COURS D'EAU NE REPRÉSENTANT PAS UN HABITAT DE POISSON		ACCESS ROAD - EXISTING / CHEMIN D'ACCÈS - EXISTANT
	WILDLIFE FEATURE / ÉLÉMENTS FAUNTIQUES		ACCESS ROAD - NEW / CHEMIN D'ACCÈS - NOUVEAU
	ECOLOGICAL COMMUNITY OF MANAGEMENT CONCERN / COMMUNAUTÉ ÉCOLOGIQUE D'INTÉRÊT POUR LA CONSERVATION		CONVERSION PIPELINE / PIPELINE DE CONVERSION
	GOLDEN WINGED WARBLER CRITICAL HABITAT / HABITAT ESSENTIEL DE LA PARULINE À AILES DORÉES		NEW PIPELINE / NOUVEAU PIPELINE
			PUMP STATION WITH ELECTRIC POWER / STATION DE POMPAGE ALIMENTÉE À L'ÉLECTRICITÉ
			PUMP STATION WITH GAS TURBINE GENERATED POWER / STATION DE POMPAGE ALIMENTÉE AU GAZ
			SILT FENCE LOCATION / BARRIÈRE À SÉDIMENTS
			TANK TERMINAL FENCE BOUNDARY / LIMITE DE LA CLÔTURE DU TERMINAL DE RÉSERVOIRS
			PROVINCIAL PARK / PARC PROVINCIAL
			PRESSURE CONTROL STATION / STATION DE CONTRÔLE DE LA PRESSION

ADJACENT LAND USE / UTILISATION DU SOL LAND OWNERSHIP / TENURE DES TERRES	CULTIVATED PRIVATE
DESCRIPTION / DESCRIPTION	OBO/1 TO 2
SOIL / SOL SALVAGE INFORMATION / INFORMATION RELATIVE À LA PRÉSERVATION DU SOL	1. STRIP TO DEPTH / 20 CM 2. PLACE IN PERMANENT STOCK PILE IN DESIGNATED LOCATION. CONTOUR TO A STABLE PROFILE. 3. WHERE BOTH FORESTED AND CULTIVATED LAND-USE IS ENCOUNTERED WITHIN THE FOOTPRINT, SURFACE MATERIALS AND/ OR TOPSOIL CONSERVED SHALL BE PLACED AND CONTOURED IN A SINGLE PERMANENT STOCKPILE. CARE SHALL BE TAKEN TO MINIMIZE MIXING OF THE SURFACE MATERIALS AND/ OR TOPSOIL PILES DURING PLACEMENT AND CONTOURING. 4. WHERE OPEN WATER OR SATURATED SOILS ARE ENCOUNTERED THAT PRECLUDE PRACTICAL SOIL/ SURFACE MATERIALS SALVAGE, AS DETERMINED BY THE EI, STRIPPING IN THESE AREAS IS NOT REQUIRED.
SPECIAL MATERIALS HANDLING / MANUTENTION PARTICULIÈRE DU MATÉRIEL	NO SPECIAL MATERIAL HANDLING REQUIRED.
VEGETATION AND WETLAND / VÉGÉTATION ET MILIEU HUMIDE	NO VEGETATION OR WETLAND RESOURCES IDENTIFIED.
WILDLIFE / FAUNE	AVOID CONSTRUCTION DURING THE NESTING PERIOD FOR MIGRATORY BIRDS (APRIL 1 TO AUGUST 31), WHERE POSSIBLE. WHERE NOT POSSIBLE, IMPLEMENT THE BIRD NEST MITIGATION PLAN.
FISHERIES / FAUNE AQUATIQUE	MB-503-01-CAR: FIELD DRAINAGE / NO RESTRICTED ACTIVITY PERIOD.
HISTORICAL RESOURCE / POTENTIEL ARCHÉOLOGIQUE	NO HISTORICAL RESOURCES IDENTIFIED.
PALAEONTOLOGICAL RESOURCE / SITE D'INTÉRÊT PALÉONTOLOGIQUE	NO PALAEONTOLOGICAL RESOURCES IDENTIFIED.
OTHER CONSTRUCTION CONSIDERATIONS / AUTRES CONSIDÉRATIONS RELIÉE À LA CONSTRUCTION	NO SPECIAL CONSTRUCTION CONSIDERATIONS FOR THIS SITE. MAINTAIN SURFACE WATER DRAINAGE AROUND THE PERIMETER BASED ON FINAL GRADE.
ACCESS CONTROL / OTHER / GESTION DES ACCÈS / AUTRES	NO ACCESS CONTROL REQUIRED
EROSION AND SEDIMENT CONTROL / CONTRÔLE DE L'ÉROSION ET DES SÉDIMENTS	TEMPORARY SILT FENCE LOCATION TO BE FIELD VERIFIED BY THE ENVIRONMENTAL INSPECTOR.
RECLAMATION / REMISE EN ÉTAT	SEED PERMANENT TOPSOIL/SURFACE MATERIALS STOCKPILES, AND STABILIZE AS REQUIRED TO PREVENT EROSION, SEED MIX TO BE DETERMINED.

RESOURCES AND CONSTRUCTION MITIGATION MEASURES / RESSOURCES ET MESURES D'ATTÉNUATION EN PÉRIODE DE CONSTRUCTION

SOIL DESCRIPTION /
DESCRIPTION DU SOL

SLOPE CLASS /
CLASSE DE
PENTE

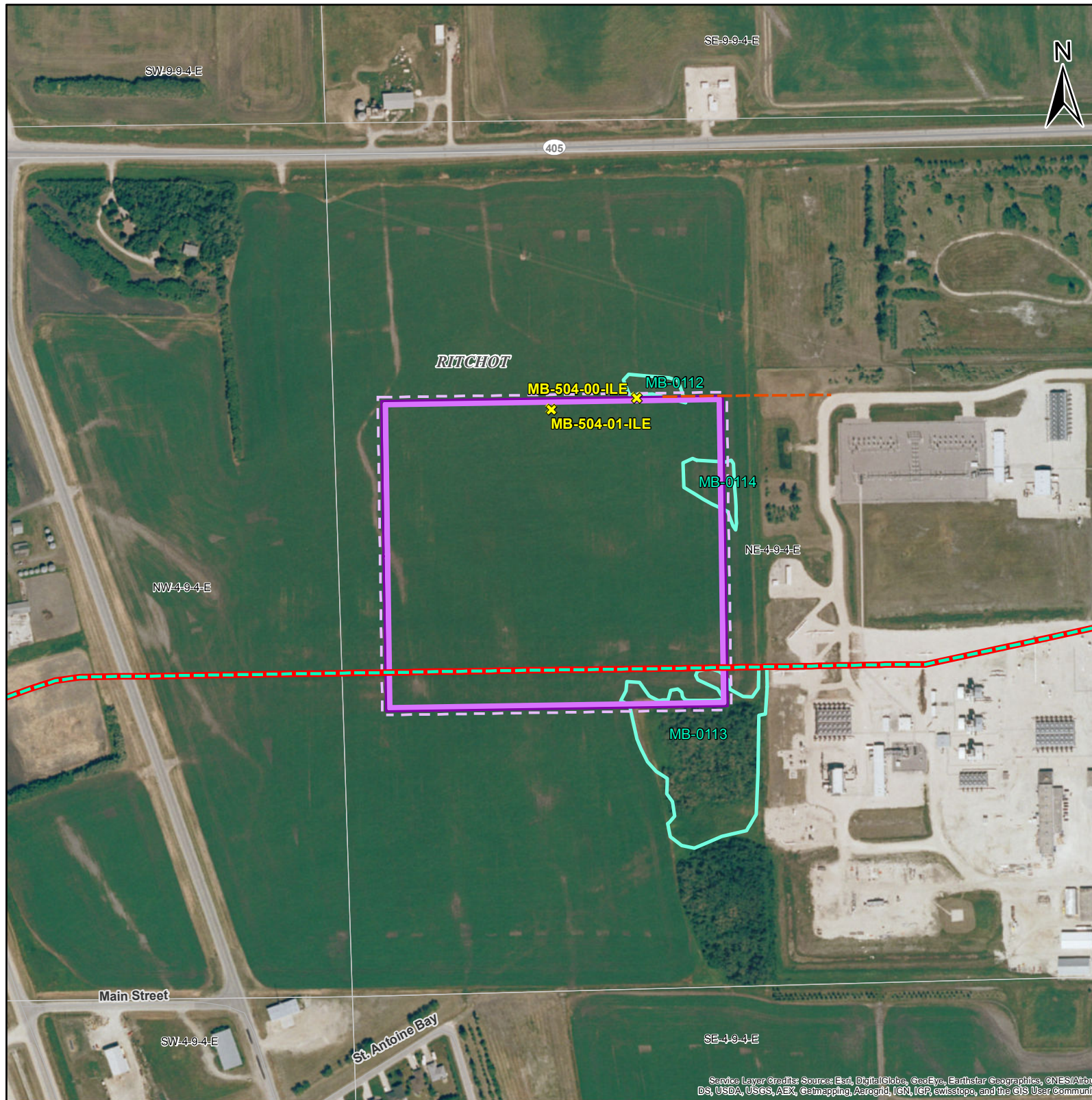
PHASE / PHASE

SOIL SERIES /
SÉRIE DE SOLS

FOOTNOTES / NOTES:

- REFER TO THE ENVIRONMENTAL PROTECTION PLAN FOR A COMPLETE UNDERSTANDING OF THE MITIGATION REQUIREMENTS FOR THE PROJECT. / SE RÉFÉRER AU PLAN DE PROTECTION DE L'ENVIRONNEMENT POUR UNE COMPRÉHENSION EXHAUSTIVE DES MESURES D'ATTÉNUATION LIÉES AU PROJET.
- SOILS SALVAGED FROM THE DEVELOPMENT FOOTPRINT SHOULD BE BASED ON THE DESIGN, LAYOUT AND CORRESPONDING SPACE REQUIREMENTS, INCLUDING ROADS, DITCHES, SITE DRAINAGE / WATER CONTROLS, ETC. REFER TO APPLICABLE PLOT PLANS, CIVIL DRAWINGS. / LA PRÉSERVATION DU SOL LIÉE AU DÉVELOPPEMENT DE LA ZONE D'IMPLANTATION DU PROJET DEVRAIT ÊTRE ÉTABLIE SELON LA CONCEPTION, LA CONFIGURATION ET L'ESPACE REQUIS (INCLUANT LES ROUTES, LES FOSSÉS, LES POSTES DE RÉGULATION DU DRAINAGE ET DE L'ÉCOULEMENT DE L'EAU, ETC.). SE RÉFÉRER AUX PLANS D'AMÉNAGEMENT ET AUX DESSINS DE GÉNIE CIVIL PERTINENTS.
- EXAMPLES: ACID ROCK DRAINAGE (ARD), CONTAMINATED SOILS, CONTAMINATED WATER. / EXEMPLES: DRAINAGE ACIDE (DA), SOLS CONTAMINÉS, EAU CONTAMINÉE.

SHEET REVISION / N° RÉVISION REV_A 20151130	INTERNAL ID / IDENTIFIANT INTERNE 1	PROJECTION / PROJECTION UTM ZONE 14	GATUM / SYSTÈME GÉODÉSIQUE NAD 83	PREPARED BY / PRÉPARE PAR
Sources: Project data and high resolution imagery provided by TransCanada Pipelines Limited. Base data provided by the Governments of Canada, Alberta, Saskatchewan, Manitoba and Ontario. / Sources: Les données spécifiques à ce projet et images à haute résolution sont fournies par TransCanada Pipelines Limited. Les données de base sont fournies par les gouvernements du Canada, de l'Alberta, de la Saskatchewan, du Manitoba et de l'Ontario.		DATE / DATE 20151123	PREPARED FOR / PRÉPARE POUR 	
0 100 200 300 Metres / Mètres - 1:5,000 Original Page Size / Taille de page originale: 11 x 17		ENERGY EAST PIPELINE PROJECT / PROJET OLÉODUC ÉNERGIE EST Environmental Figure / Figure des considérations environnementales Manitoba Pump Station / Station de pompage 22-Cartier Page / Page 6 of / de 9		



AERIAL PHOTOGRAPHY DATE / DATE DES PHOTOGRAPHIES AÉRIENNES: 2008 - 2012

THE CURRENT VIEW OF THE FACILITY IS APPROXIMATE. FACILITY SIZE AND ORIENTATION WILL BE FURTHER REFINED DURING DETAILED ENGINEERING TO AVOID OVERLAP WITH EXISTING ROADS AND OTHER INFRASTRUCTURE, AND TO ALIGN WITH PROPERTY BOUNDARIES BASED ON DISCUSSIONS WITH POTENTIALLY AFFECTED LANDOWNERS.

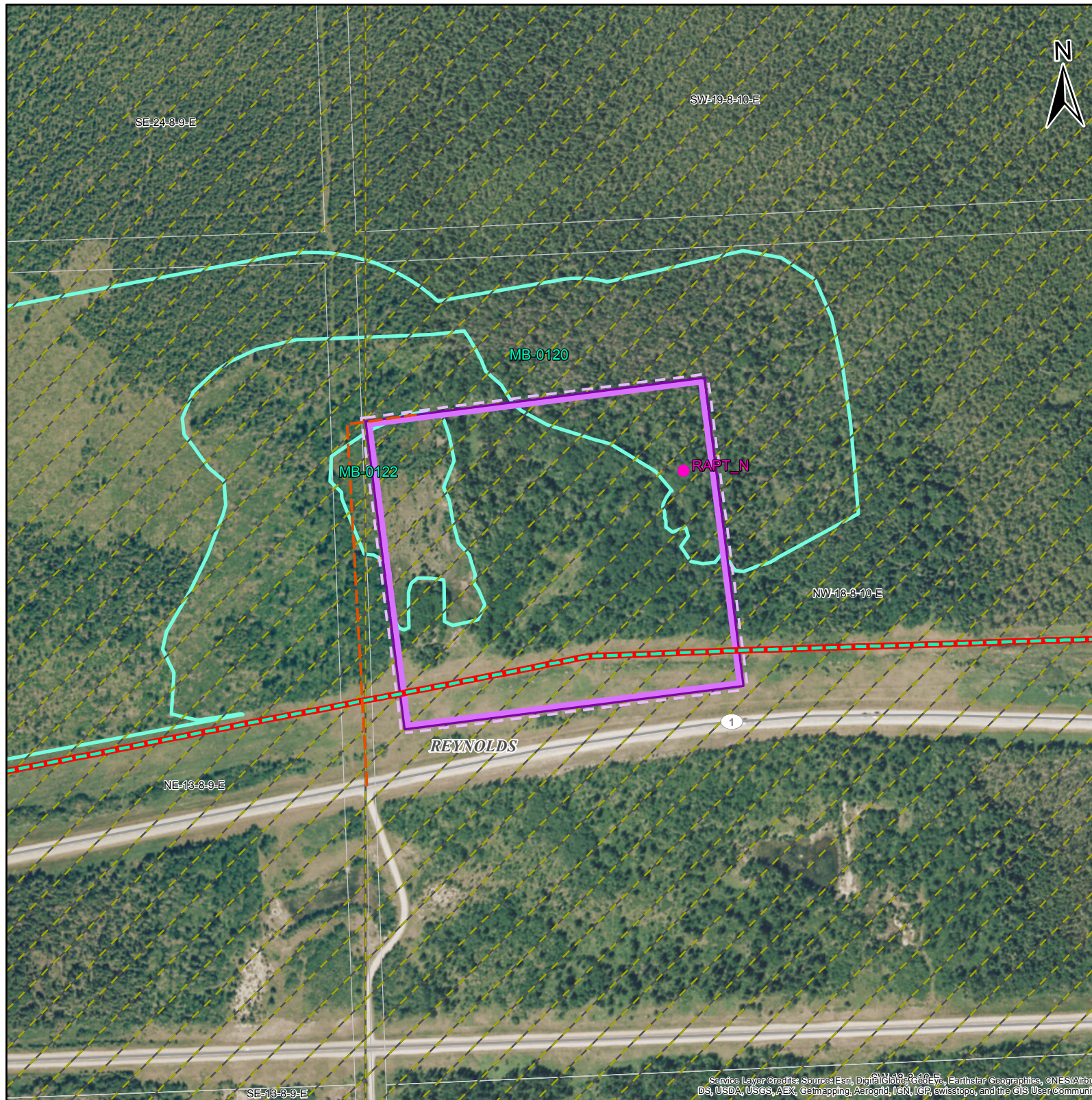
PERMANENT ACCESS ROAD TO THE FACILITY IS PRELIMINARY AND WILL BE REFINED DURING DETAILED ENGINEERING DESIGN.

LEGEND / LÉGENDE			
	WATERCOURSE FISH HABITAT / COURS D'EAU REPRÉSENTANT UN HABITAT DE POISSON		WETLAND / MILIEU HUMIDE
	WATERCOURSE NOT FISH HABITAT / COURS D'EAU NE REPRÉSENTANT PAS UN HABITAT DE POISSON		ACCESS ROAD - EXISTING / CHEMIN D'ACCÈS - EXISTANT
	WILDLIFE FEATURE / ÉLÉMENTS FAUNIQUES		ACCESS ROAD - NEW / CHEMIN D'ACCÈS - NOUVEAU
	ECOLOGICAL COMMUNITY OF MANAGEMENT CONCERN / COMMUNAUTÉ ÉCOLOGIQUE D'INTÉRÊT POUR LA CONSERVATION		CONVERSION PIPELINE / PIPELINE DE CONVERSION
	GOLDEN WINGED WARBLER CRITICAL HABITAT / HABITAT ESSENTIEL DE LA PARULINE À AILES DORÉES		NEW PIPELINE / NOUVEAU PIPELINE
			PUMP STATION WITH ELECTRIC POWER / STATION DE POMPAGE ALIMENTÉE À L'ÉLECTRICITÉ
			PUMP STATION WITH GAS TURBINE GENERATED POWER / STATION DE POMPAGE ALIMENTÉE AU GAZ
			SILT FENCE LOCATION / BARRIÈRE À SÉDIMENTS
			TANK TERMINAL FENCE BOUNDARY / LIMITE DE LA CLÔTURE DU TERMINAL DE RÉSERVOIRS
			PROVINCIAL PARK / PARC PROVINCIAL
			PRESSURE CONTROL STATION / STATION DE CONTRÔLE DE LA PRESSION

ADJACENT LAND USE / UTILISATION DU SOL LAND OWNERSHIP / TENURE DES TERRES	CULTIVATED PRIVATE
DESCRIPTION / DESCRIPTION	RIV/1
SOIL / SOL SALVAGE INFORMATION / INFORMATION RELATIVE À LA PRÉSERVATION DU SOL	1. STRIP TO DEPTH / 30 CM 2. STRIPPING UP TO 15 CM FOR WETLANDS 3. PLACE IN PERMANENT STOCK PILE IN DESIGNATED LOCATION. CONTOUR TO A STABLE PROFILE. 4. WHERE BOTH FORESTED AND CULTIVATED LAND-USE IS ENCOUNTERED WITHIN THE FOOTPRINT, SURFACE MATERIALS AND/ OR TOPSOIL CONSERVED SHALL BE PLACED AND CONTOURED IN A SINGLE PERMANENT STOCKPILE. CARE SHALL BE TAKEN TO MINIMIZE MIXING OF THE SURFACE MATERIALS AND/ OR TOPSOIL PILES DURING PLACEMENT AND CONTOURING. 5. WHERE OPEN WATER OR SATURATED SOILS ARE ENCOUNTERED THAT PRECLUDE PRACTICAL SOIL/ SURFACE MATERIALS SALVAGE, AS DETERMINED BY THE EI, STRIPPING IN THESE AREAS IS NOT REQUIRED.
SPECIAL MATERIALS HANDLING / MANUTENTION PARTICULIÈRE DU MATÉRIEL	NO SPECIAL MATERIAL HANDLING REQUIRED.
VEGETATION AND WETLAND / VÉGÉTATION ET MILIEU HUMIDE	MB-0112, MB-0113 & MB-0114: WETLAND COMPENSATION MAY BE REQUIRED FOR PERMANENT CHANGES TO WETLANDS WITHIN THE SITE FOOTPRINT.
WILDLIFE / FAUNE	AVOID CONSTRUCTION DURING THE NESTING PERIOD FOR MIGRATORY BIRDS (APRIL 1 TO AUGUST 31), WHERE POSSIBLE. WHERE NOT POSSIBLE, IMPLEMENT THE BIRD NEST MITIGATION PLAN.
FISHERIES / FAUNE AQUATIQUE	MB-504-00-ILE: FIELD DRAINAGE / NO RESTRICTED ACTIVITY PERIOD. MB-504-01-ILE: FIELD DRAINAGE / NO RESTRICTED ACTIVITY PERIOD.
HISTORICAL RESOURCE / POTENTIEL ARCHÉOLOGIQUE	NO HISTORICAL RESOURCES IDENTIFIED.
PALAEONTOLOGICAL RESOURCE / SITE D'INTÉRÊT PALÉONTOLOGIQUE	NO PALAEONTOLOGICAL RESOURCES IDENTIFIED.
OTHER CONSTRUCTION CONSIDERATIONS / AUTRES CONSIDÉRATIONS RELIÉE À LA CONSTRUCTION	NO SPECIAL CONSTRUCTION CONSIDERATIONS FOR THIS SITE. MAINTAIN SURFACE WATER DRAINAGE AROUND THE PERIMETER BASED ON FINAL GRADE.
ACCESS CONTROL / OTHER / GESTION DES ACCÈS / AUTRES	NO ACCESS CONTROL REQUIRED
EROSION AND SEDIMENT CONTROL / CONTRÔLE DE L'ÉROSION ET DES SÉDIMENTS	TEMPORARY SILT FENCE LOCATION TO BE FIELD VERIFIED BY THE ENVIRONMENTAL INSPECTOR.
RECLAMATION / REMISE EN ÉTAT	SEED PERMANENT TOPSOIL/SURFACE MATERIALS STOCKPILES, AND STABILIZE AS REQUIRED TO PREVENT EROSION, SEED MIX TO BE DETERMINED.

SOIL DESCRIPTION / DESCRIPTION DU SOL	FOOTNOTES / NOTES:
<p>SLOPE CLASS / CLASSE DE PENTE PHASE / PHASE SOIL SERIES / SÉRIE DE SOLS</p> <p>FSTyp3 to 4</p>	<p>1. REFER TO THE ENVIRONMENTAL PROTECTION PLAN FOR A COMPLETE UNDERSTANDING OF THE MITIGATION REQUIREMENTS FOR THE PROJECT. / SE RÉFÉRER AU PLAN DE PROTECTION DE L'ENVIRONNEMENT POUR UNE COMPRÉHENSION EXHAUSTIVE DES MESURES D'ATTENUATION LIÉES AU PROJET.</p> <p>2. SOILS SALVAGED FROM THE DEVELOPMENT FOOTPRINT SHOULD BE BASED ON THE DESIGN, LAYOUT AND CORRESPONDING SPACE REQUIREMENTS, INCLUDING ROADS, DITCHES, SITE DRAINAGE / WATER CONTROLS, ETC. REFER TO APPLICABLE PLOT PLANS, CIVIL DRAWINGS / LA PRÉSERVATION DU SOL LIÉE AU DÉVELOPPEMENT DE LA ZONE D'IMPLANTATION DU PROJET DEVRAIT ÊTRE ÉTABLIE SELON LA CONCEPTION, LA CONFIGURATION ET L'ESPACE REQUIS (INCLUANT LES ROUTES, LES FOSSÉS, LES POSTES DE RÉGULATION DU DRAINAGE ET DE L'ÉCOULEMENT DE L'EAU, ETC.). SE RÉFÉRER AUX PLANS D'AMÉNAGEMENT ET AUX DESSINS DE GÉNIE CIVIL PERTINENTS.</p> <p>3. EXAMPLES: ACID ROCK DRAINAGE (ARD), CONTAMINATED SOILS, CONTAMINATED WATER. / EXEMPLES: DRAINAGE ACIDE (DA), SOLS CONTAMINÉS, EAU CONTAMINÉE.</p>

SHEET REVISION / N° RÉVISION REV_A 20151130	INTERNAL ID / IDENTIFIANT INTERNE 1	PROJECTION / PROJECTION UTM ZONE 14	GATUM / SYSTÈME GÉODÉSIQUE NAD 83	PREPARED BY / PRÉPARE PAR
Sources: Project data and high resolution imagery provided by TransCanada Pipelines Limited. Base data provided by the Governments of Canada, Alberta, Saskatchewan, Manitoba and Ontario. / Sources: Les données spécifiques à ce projet et images à haute résolution sont fournies par TransCanada Pipelines Limited. Les données de base sont fournies par les gouvernements du Canada, de l'Alberta, de la Saskatchewan, du Manitoba et de l'Ontario.		DATE / DATE 20151123	PREPARED FOR / PRÉPARE POUR 	
<p>ENERGY EAST PIPELINE PROJECT / PROJET OLÉODUC ÉNERGIE EST</p> <p>Environmental Figure / Figure des considérations environnementales</p> <p>Manitoba Pump Station / Station de pompage</p> <p>23-11e Des Chenes</p> <p>Page / Page 7 of / de 9</p>				



AERIAL PHOTOGRAPHY DATE / DATE DES PHOTOGRAPHIES AÉRIENNES: 2008 - 2012

THE CURRENT VIEW OF THE FACILITY IS APPROXIMATE. FACILITY SIZE AND ORIENTATION WILL BE FURTHER REFINED DURING DETAILED ENGINEERING TO AVOID OVERLAP WITH EXISTING ROADS AND OTHER INFRASTRUCTURE, AND TO ALIGN WITH PROPERTY BOUNDARIES BASED ON DISCUSSIONS WITH POTENTIALLY AFFECTED LANDOWNERS.

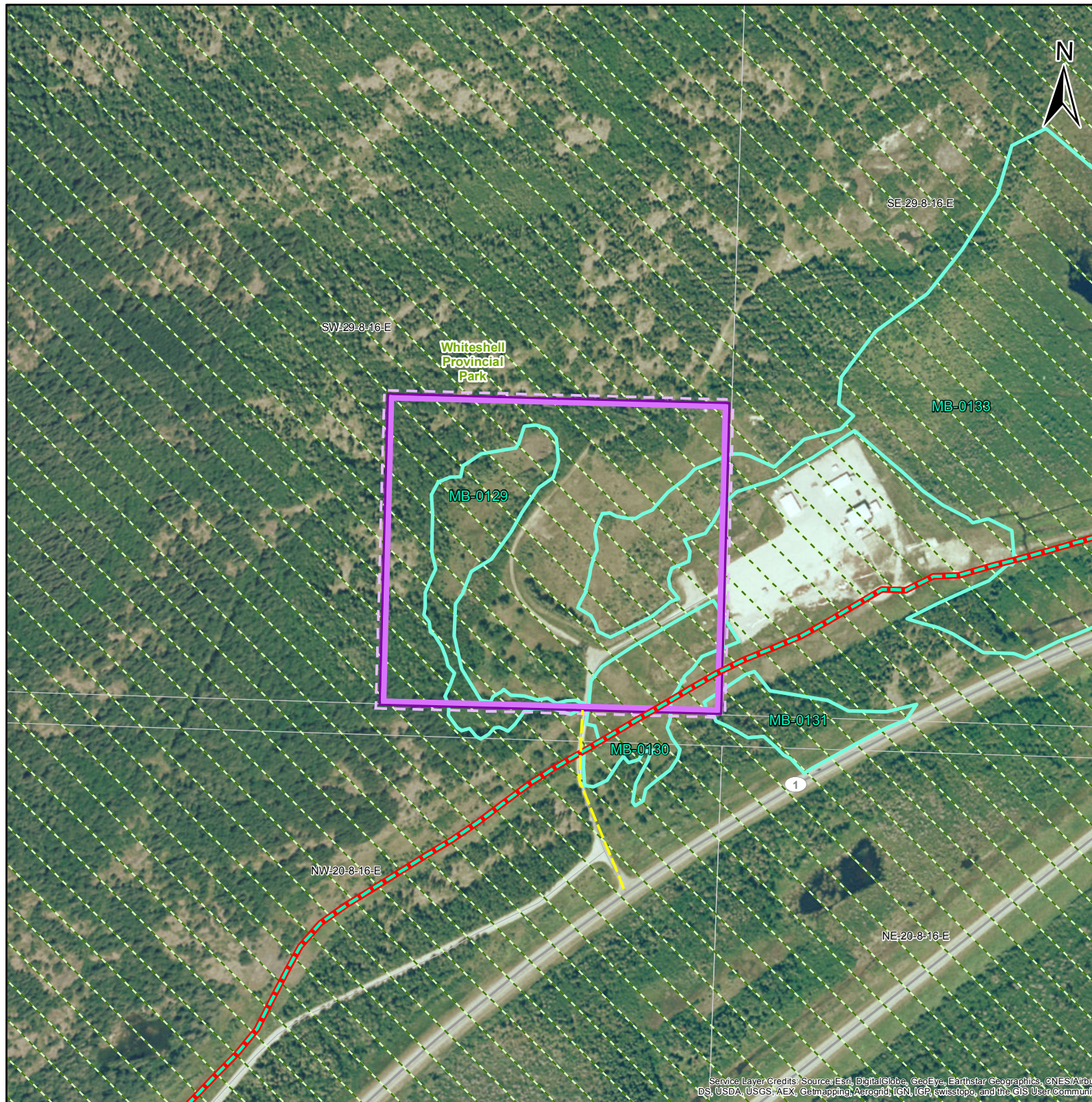
PERMANENT ACCESS ROAD TO THE FACILITY IS PRELIMINARY AND WILL BE REFINED DURING DETAILED ENGINEERING DESIGN.

LEGEND / LÉGENDE	
	WATERCOURSE FISH HABITAT / COURS D'EAU REPRÉSENTANT UN HABITAT DE POISSON
	WATERCOURSE NOT FISH HABITAT / COURS D'EAU NE REPRÉSENTANT PAS UN HABITAT DE POISSON
	WILDLIFE FEATURE / ÉLÉMENTS FAUNTIQUES
	ECOLOGICAL COMMUNITY OF MANAGEMENT CONCERN / COMMUNAUTÉ ÉCOLOGIQUE D'INTÉRÊT POUR LA CONSERVATION
	GOLDEN WINGED WARBLER CRITICAL HABITAT / HABITAT ESSENTIEL DE LA PARULINE À AILES DORÉES
	WETLAND / MILIEU HUMIDE
	ACCESS ROAD - EXISTING / CHEMIN D'ACCÈS - EXISTANT
	ACCESS ROAD - NEW / CHEMIN D'ACCÈS - NOUVEAU
	CONVERSION PIPELINE / PIPELINE DE CONVERSION
	NEW PIPELINE / NOUVEAU PIPELINE
	PUMP STATION WITH ELECTRIC POWER / STATION DE POMPAGE ALIMENTÉE À L'ÉLECTRICITÉ
	PUMP STATION WITH GAS TURBINE GENERATED POWER / STATION DE POMPAGE ALIMENTÉE AU GAZ
	SILT FENCE LOCATION / BARRIÈRE À SÉDIMENTS
	TANK TERMINAL FENCE BOUNDARY / LIMITE DE LA CLÔTURE DU TERMINAL DE RÉSERVOIRS
	PROVINCIAL PARK / PARC PROVINCIAL
	PRESSURE CONTROL STATION / STATION DE CONTRÔLE DE LA PRESSION

ADJACENT LAND USE / UTILISATION DU SOL LAND OWNERSHIP / TENURE DES TERRES	FORESTED CROWN
DESCRIPTION / DESCRIPTION	WOG/4
SOIL / SOL SALVAGE INFORMATION / INFORMATION RELATIVE À LA PRÉSERVATION DU SOL	1. STRIPPING/GRUBBING UP TO 15 CM FOR FORESTED AREAS. 2. STRIPPING UP TO 15 CM FOR WETLANDS 3. PLACE IN PERMANENT STOCK PILE IN DESIGNATED LOCATION. CONTOUR TO A STABLE PROFILE. 4. WHERE BOTH FORESTED AND CULTIVATED LAND-USE IS ENCOUNTERED WITHIN THE FOOTPRINT, SURFACE MATERIALS AND/ OR TOPSOIL CONSERVED SHALL BE PLACED AND CONTOURED IN A SINGLE PERMANENT STOCKPILE. CARE SHALL BE TAKEN TO MINIMIZE MIXING OF THE SURFACE MATERIALS AND/ OR TOPSOIL PILES DURING PLACEMENT AND CONTOURING. 5. WHERE OPEN WATER OR SATURATED SOILS ARE ENCOUNTERED THAT PRECLUDE PRACTICAL SOIL/ SURFACE MATERIALS SALVAGE, AS DETERMINED BY THE EI, STRIPPING IN THESE AREAS IS NOT REQUIRED.
SPECIAL MATERIALS HANDLING / MANUTENTION PARTICULIÈRE DU MATÉRIEL	NO SPECIAL MATERIAL HANDLING REQUIRED.
VEGETATION AND WETLAND / VÉGÉTATION ET MILIEU HUMIDE	MB-0120 & MB-0122: WETLAND COMPENSATION MAY BE REQUIRED FOR PERMANENT CHANGES TO WETLANDS WITHIN THE SITE FOOTPRINT. TIMBER SALVAGE: TO BE DETERMINED
WILDLIFE / FAUNE	AVOID CONSTRUCTION DURING THE NESTING PERIOD FOR MIGRATORY BIRDS (APRIL 21 TO AUGUST 14), WHERE POSSIBLE. WHERE NOT POSSIBLE, IMPLEMENT THE BIRD NEST MITIGATION PLAN. RAPT_N (UNKNOWN RAPTOR): ACTIVE NESTS MUST NOT BE DAMAGED OR DESTROYED. IF AN ACTIVE RAPTOR NEST IS IDENTIFIED, WORK WITHIN 100 M OF THE NEST CANNOT BEGIN ON OR AFTER MARCH 15, REGARDLESS OF LAND COVER, UNTIL NESTING IS COMPLETE AND THE JUVENILES HAVE FLEDGED, AS DETERMINED BY A QUALIFIED WILDLIFE BIOLOGIST. IF ONGOING CONSTRUCTION OR RECLAMATION WORK IS INITIATED PRIOR TO MARCH 15 WITHIN THE 100 M SETBACK FROM A NEST THAT WAS INHABITED WITHIN THE PREVIOUS 12 MONTHS, WORK MAY CONTINUE AS LONG AS REGULAR CHECKS DO NOT CONFIRM NESTING ACTIVITY. CRITICAL HABITAT: CONSULT WITH APPROPRIATE AGENCIES FOR WORK IN CRITICAL HABITAT OF GOLDEN-WINGED WARBLER.
FISHERIES / FAUNE AQUATIQUE	NO WATERCOURSES OR FISHERIES RESOURCES IDENTIFIED.
HISTORICAL RESOURCE / POTENTIEL ARCHÉOLOGIQUE	NO HISTORICAL RESOURCES IDENTIFIED.
PALAEONTOLOGICAL RESOURCE / SITE D'INTÉRÊT PALÉONTOLOGIQUE	NO PALAEONTOLOGICAL RESOURCES IDENTIFIED.
OTHER CONSTRUCTION CONSIDERATIONS / AUTRES CONSIDÉRATIONS RELIÉE À LA CONSTRUCTION	NO SPECIAL CONSTRUCTION CONSIDERATIONS FOR THIS SITE. MAINTAIN SURFACE WATER DRAINAGE AROUND THE PERIMETER BASED ON FINAL GRADE.
ACCESS CONTROL / OTHER / GESTION DES ACCÈS / AUTRES	NO ACCESS CONTROL REQUIRED
EROSION AND SEDIMENT CONTROL / CONTRÔLE DE L'ÉROSION ET DES SÉDIMENTS	TEMPORARY SILT FENCE LOCATION TO BE FIELD VERIFIED BY THE ENVIRONMENTAL INSPECTOR.
RECLAMATION / REMISE EN ÉTAT	SEED PERMANENT TOPSOIL/SURFACE MATERIALS STOCKPILES, AND STABILIZE AS REQUIRED TO PREVENT EROSION, SEED MIX TO BE DETERMINED.

SOIL DESCRIPTION / DESCRIPTION DU SOL		FOOTNOTES / NOTES: 1. REFER TO THE ENVIRONMENTAL PROTECTION PLAN FOR A COMPLETE UNDERSTANDING OF THE MITIGATION REQUIREMENTS FOR THE PROJECT. / SE RÉFÉRER AU PLAN DE PROTECTION DE L'ENVIRONNEMENT POUR UNE COMPRÉHENSION EXHAUSTIVE DES MESURES D'ATTÉNUATION LIÉES AU PROJET. 2. SOILS SALVAGED FROM THE DEVELOPMENT FOOTPRINT SHOULD BE BASED ON THE DESIGN, LAYOUT AND CORRESPONDING SPACE REQUIREMENTS, INCLUDING ROADS, DITCHES, SITE DRAINAGE / WATER CONTROLS, ETC. REFER TO APPLICABLE PLOT PLANS, CIVIL DRAWINGS. / LA PRÉSERVATION DU SOL LIÉE AU DÉVELOPPEMENT DE LA ZONE D'IMPLANTATION DU PROJET DEVRAIT ÊTRE ÉTABLIE SELON LA CONCEPTION, LA CONFIGURATION ET L'ESPACE REQUIS (INCLUANT LES ROUTES, LES FOSSÉS, LES POSTES DE RÉGULATION DU DRAINAGE ET DE L'ÉCOULEMENT DE L'EAU, ETC.). SE RÉFÉRER AUX PLANS D'AMÉNAGEMENT ET AUX DESSINS DE GÉNIE CIVIL PERTINENTS. 3. EXAMPLES: ACID ROCK DRAINAGE (ARD), CONTAMINATED SOILS, CONTAMINATED WATER. / EXEMPLES: DRAINAGE ACIDE (DA), SOLS CONTAMINÉS, EAU CONTAMINÉE.
FST/Yr3 to 4 SLOPE CLASS / CLASSE DE PENTE PHASE / PHASE SOIL SERIES / SÉRIE DE SOLS		

SHEET REVISION / N° RÉVISION REV_A 20151130	INTERNAL ID / IDENTIFIANT INTERNE 1	PROJECTION / PROJECTION UTM ZONE 14	GATUM / SYSTÈME GÉODÉSIQUE NAD 83	PREPARED BY / PRÉPARE PAR
Sources: Project data and high resolution imagery provided by TransCanada Pipelines Limited. Base data provided by the Governments of Canada, Alberta, Saskatchewan, Manitoba and Ontario. / Sources: Les données spécifiques à ce projet et images à haute résolution sont fournies par TransCanada Pipelines Limited. Les données de base sont fournies par les gouvernements du Canada, de l'Alberta, de la Saskatchewan, du Manitoba et de l'Ontario.		DATE / DATE 20151123	PREPARED FOR / PRÉPARE POUR 	ENERGY EAST PIPELINE PROJECT / PROJET OLÉODUC ÉNERGIE EST Environmental Figure / Figure des considérations environnementales Manitoba Pump Station / Station de pompage 24-Spruce Page / Page 8 of / de 9



AERIAL PHOTOGRAPHY DATE / DATE DES PHOTOGRAPHIES AÉRIENNES: 2008 - 2012

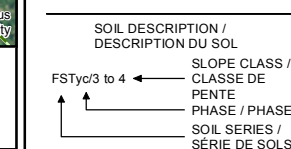
THE CURRENT VIEW OF THE FACILITY IS APPROXIMATE. FACILITY SIZE AND ORIENTATION WILL BE FURTHER REFINED DURING DETAILED ENGINEERING TO AVOID OVERLAP WITH EXISTING ROADS AND OTHER INFRASTRUCTURE, AND TO ALIGN WITH PROPERTY BOUNDARIES BASED ON DISCUSSIONS WITH POTENTIALLY AFFECTED LANDOWNERS.

PERMANENT ACCESS ROAD TO THE FACILITY IS PRELIMINARY AND WILL BE REFINED DURING DETAILED ENGINEERING DESIGN.

Service Layer Credits: Source: Esri, DigitalGlobe, GeoEye, Earthstar Geographics, CNES/Airbus DS, USDA, USGS, AEX, Geomatics, AerialGrid, IGN, ICF, swisstopo, and the GIS User Community

LEGEND / LÉGENDE	
	WATERCOURSE FISH HABITAT / COURS D'EAU REPRÉSENTANT UN HABITAT DE POISSON
	WATERCOURSE NOT FISH HABITAT / COURS D'EAU NE REPRÉSENTANT PAS UN HABITAT DE POISSON
	WILDLIFE FEATURE / ÉLÉMENTS FAUNTIQUES
	ECOLOGICAL COMMUNITY OF MANAGEMENT CONCERN / COMMUNAUTÉ ÉCOLOGIQUE D'INTÉRÊT POUR LA CONSERVATION
	GOLDEN WINGED WARBLER CRITICAL HABITAT / HABITAT ESSENTIEL DE LA PARULINE À AILES DORÉES
	WETLAND / MILIEU HUMIDE
	ACCESS ROAD - EXISTING / CHEMIN D'ACCÈS - EXISTANT
	ACCESS ROAD - NEW / CHEMIN D'ACCÈS - NOUVEAU
	CONVERSION PIPELINE / PIPELINE DE CONVERSION
	NEW PIPELINE / NOUVEAU PIPELINE
	PRESSURE CONTROL STATION / STATION DE CONTRÔLE DE LA PRESSION
	PUMP STATION WITH ELECTRIC POWER / STATION DE POMPAGE ALIMENTÉE À L'ÉLECTRICITÉ
	PUMP STATION WITH GAS TURBINE GENERATED POWER / STATION DE POMPAGE ALIMENTÉE AU GAZ
	SILT FENCE LOCATION / BARRIÈRE À SÉDIMENTS
	TANK TERMINAL FENCE BOUNDARY / LIMITE DE LA CLÔTURE DU TERMINAL DE RÉSERVOIRS
	PROVINCIAL PARK / PARC PROVINCIAL

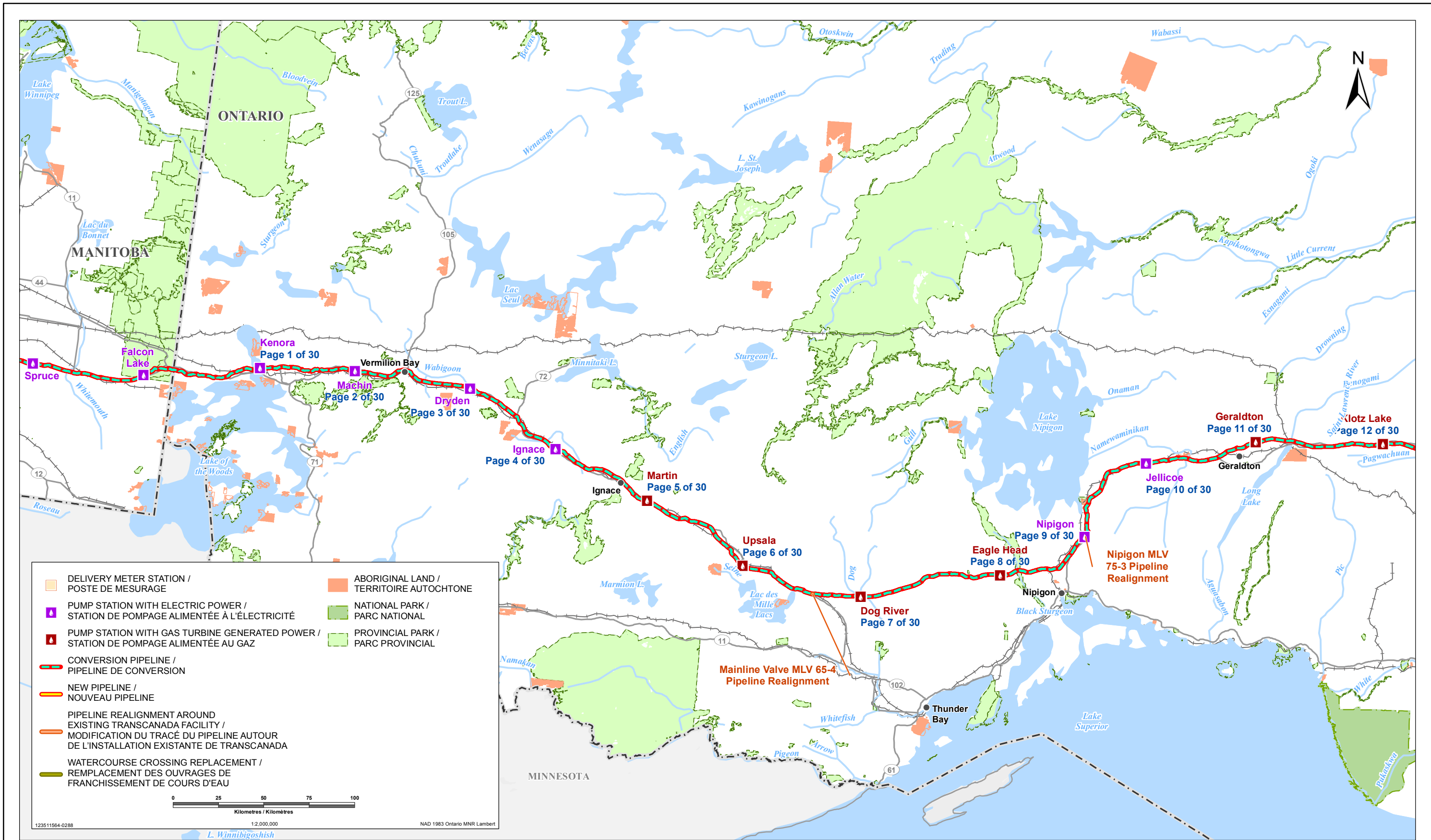
ADJACENT LAND USE / UTILISATION DU SOL LAND OWNERSHIP / TENURE DES TERRES		FORESTED CROWN
DESCRIPTION / DESCRIPTION		LSO/2
SOIL / SOL SALVAGE INFORMATION / INFORMATION RELATIVE À LA PRÉSERVATION DU SOL	DESCRIPTION / DESCRIPTION	1. STRIPPING/GRUBBING UP TO 15 CM FOR FORESTED AREAS. 2. STRIPPING UP TO 15 CM FOR WETLANDS 3. PLACE IN PERMANENT STOCK PILE IN DESIGNATED LOCATION. CONTOUR TO A STABLE PROFILE. 4. WHERE BOTH FORESTED AND CULTIVATED LAND-USE IS ENCOUNTERED WITHIN THE FOOTPRINT, SURFACE MATERIALS AND/ OR TOPSOIL CONSERVED SHALL BE PLACED AND CONTOURED IN A SINGLE PERMANENT STOCKPILE. CARE SHALL BE TAKEN TO MINIMIZE MIXING OF THE SURFACE MATERIALS AND/ OR TOPSOIL PILES DURING PLACEMENT AND CONTOURING. 5. WHERE OPEN WATER OR SATURATED SOILS ARE ENCOUNTERED THAT PRECLUDE PRACTICAL SOIL/ SURFACE MATERIALS SALVAGE, AS DETERMINED BY THE EI, STRIPPING IN THESE AREAS IS NOT REQUIRED.
	SPECIAL MATERIALS HANDLING / MANUTENTION PARTICULIÈRE DU MATÉRIEL	NO SPECIAL MATERIAL HANDLING REQUIRED.
VEGETATION AND WETLAND / VÉGÉTATION ET MILIEU HUMIDE	MB-0129, MB-0130, MB-0131 & MB-0133: WETLAND COMPENSATION MAY BE REQUIRED FOR PERMANENT CHANGES TO WETLANDS WITHIN THE SITE FOOTPRINT. TIMBER SALVAGE: TO BE DETERMINED	
WILDLIFE / FAUNE	AVOID CONSTRUCTION DURING THE NESTING PERIOD FOR MIGRATORY BIRDS (APRIL 21 TO AUGUST 14), WHERE POSSIBLE. WHERE NOT POSSIBLE, IMPLEMENT THE BIRD NEST MITIGATION PLAN.	
FISHERIES / FAUNE AQUATIQUE	NO WATERCOURSES OR FISHERIES RESOURCES IDENTIFIED.	
HISTORICAL RESOURCE / POTENTIEL ARCHÉOLOGIQUE	NO HISTORICAL RESOURCES IDENTIFIED.	
PALAEONTOLOGICAL RESOURCE / SITE D'INTÉRÊT PALÉONTOLOGIQUE	NO PALAEONTOLOGICAL RESOURCES IDENTIFIED.	
OTHER CONSTRUCTION CONSIDERATIONS / AUTRES CONSIDÉRATIONS RELIÉE À LA CONSTRUCTION	POTENTIAL RISK FOR HIGH WIND EROSION OF EXPOSED SOILS. SEE SOIL EROSION CONTINGENCY PLAN. MAINTAIN SURFACE WATER DRAINAGE AROUND THE PERIMETER BASED ON FINAL GRADE.	
ACCESS CONTROL / OTHER / GESTION DES ACCÈS / AUTRES	NO ACCESS CONTROL REQUIRED	
EROSION AND SEDIMENT CONTROL / CONTRÔLE DE L'ÉROSION ET DES SÉDIMENTS	TEMPORARY SILT FENCE LOCATION TO BE FIELD VERIFIED BY THE ENVIRONMENTAL INSPECTOR.	
RECLAMATION / REMISE EN ÉTAT	SEED PERMANENT TOPSOIL/SURFACE MATERIALS STOCKPILES, AND STABILIZE AS REQUIRED TO PREVENT EROSION, SEED MIX TO BE DETERMINED.	



FOOTNOTES / NOTES:

- REFER TO THE ENVIRONMENTAL PROTECTION PLAN FOR A COMPLETE UNDERSTANDING OF THE MITIGATION REQUIREMENTS FOR THE PROJECT. / SE RÉFÉRER AU PLAN DE PROTECTION DE L'ENVIRONNEMENT POUR UNE COMPRÉHENSION EXHAUSTIVE DES MESURES D'ATTENUATION LIÉES AU PROJET.
- SOILS SALVAGED FROM THE DEVELOPMENT FOOTPRINT SHOULD BE BASED ON THE DESIGN, LAYOUT AND CORRESPONDING SPACE REQUIREMENTS, INCLUDING ROADS, DITCHES, SITE DRAINAGE / WATER CONTROLS, ETC. REFER TO APPLICABLE PLOT PLANS, CIVIL DRAWINGS. / LA PRÉSERVATION DU SOL LIÉE AU DÉVELOPPEMENT DE LA ZONE D'IMPLANTATION DU PROJET DEVRAIT ÊTRE ÉTABLIE SELON LA CONCEPTION, LA CONFIGURATION ET L'ESPACE REQUIS (INCLUANT LES ROUTES, LES FOSSÉS, LES POSTES DE RÉGULATION DU DRAINAGE ET DE L'ÉCOULEMENT DE L'EAU, ETC.). SE RÉFÉRER AUX PLANS D'AMÉNAGEMENT ET AUX DESSINS DE GÉNIE CIVIL PERTINENTS.
- EXAMPLES: ACID ROCK DRAINAGE (ARD), CONTAMINATED SOILS, CONTAMINATED WATER. / EXEMPLES: DRAINAGE ACIDE (DA), SOLS CONTAMINÉS, EAU CONTAMINÉE.

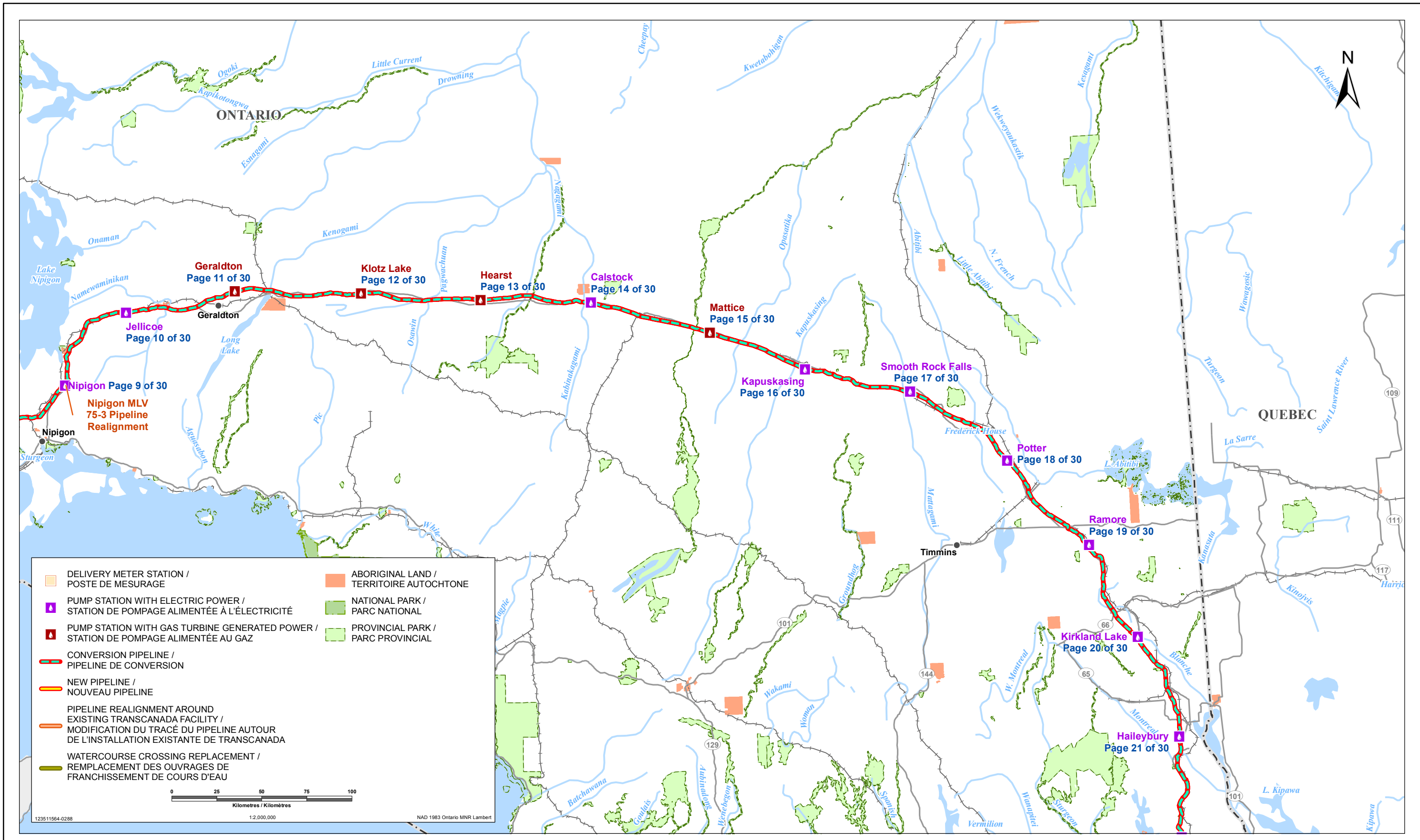
SHEET REVISION / N° RÉVISION REV_A 20151130	INTERNAL ID / IDENTIFIANT INTERNE 1	PROJECTION / PROJECTION UTM ZONE 15	SATURNI / SYSTÈME GÉODÉSIQUE NAD 83	PREPARED BY / PRÉPARE PAR
Sources: Project data and high resolution imagery provided by TransCanada Pipelines Limited. Base data provided by the Governments of Canada, Alberta, Saskatchewan, Manitoba and Ontario. / Sources: Les données spécifiques à ce projet et images à haute résolution sont fournies par TransCanada Pipelines Limited. Les données de base sont fournies par les gouvernements du Canada, de l'Alberta, de la Saskatchewan, du Manitoba et de l'Ontario.		DATE / DATE 20151123	PREPARED FOR / PRÉPARE POUR 	



ENERGY EAST PIPELINE PROJECT / PROJET D'OLÉODUC ÉNERGIE EST
 ENVIRONMENTAL FIGURES / FIGURE DES CONSIDÉRATIONS ENVIRONNEMENTALES
Ontario Segment Index / Index du segment Ontario

Sources: Project data provided by TransCanada Pipelines Limited. Base data provided by the Governments of Canada, Manitoba, Ontario and Quebec. /
 Sources: Données sur le projet fournies par TransCanada Pipelines Limited. Données de base fournies par les gouvernements du Canada et du Manitoba, de l'Ontario, et du Québec.

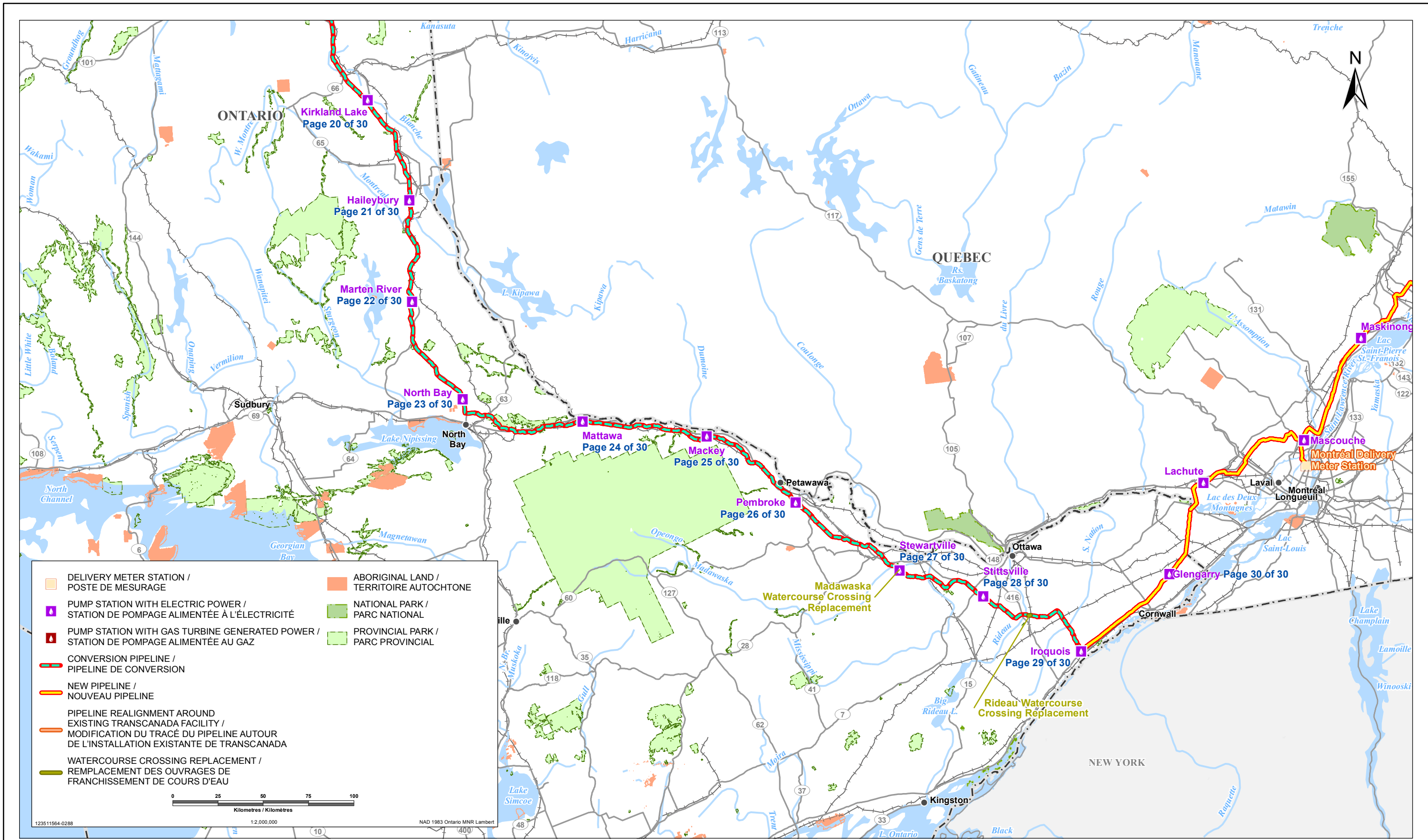
Last Modified / Dernière modification: 11/25/2015 By: bnares



ENERGY EAST PIPELINE PROJECT / PROJET D'OLÉODUC ÉNERGIE EST
 ENVIRONMENTAL FIGURES / FIGURE DES CONSIDÉRATIONS ENVIRONNEMENTALES
Ontario Segment Index / Index du segment Ontario

Sources: Project data provided by TransCanada Pipelines Limited. Base data provided by the Governments of Canada, Manitoba, Ontario and Quebec. / Sources: Données sur le projet fournies par TransCanada Pipelines Limited. Données de base fournies par les gouvernements du Canada et du Manitoba, de l'Ontario, et du Québec.

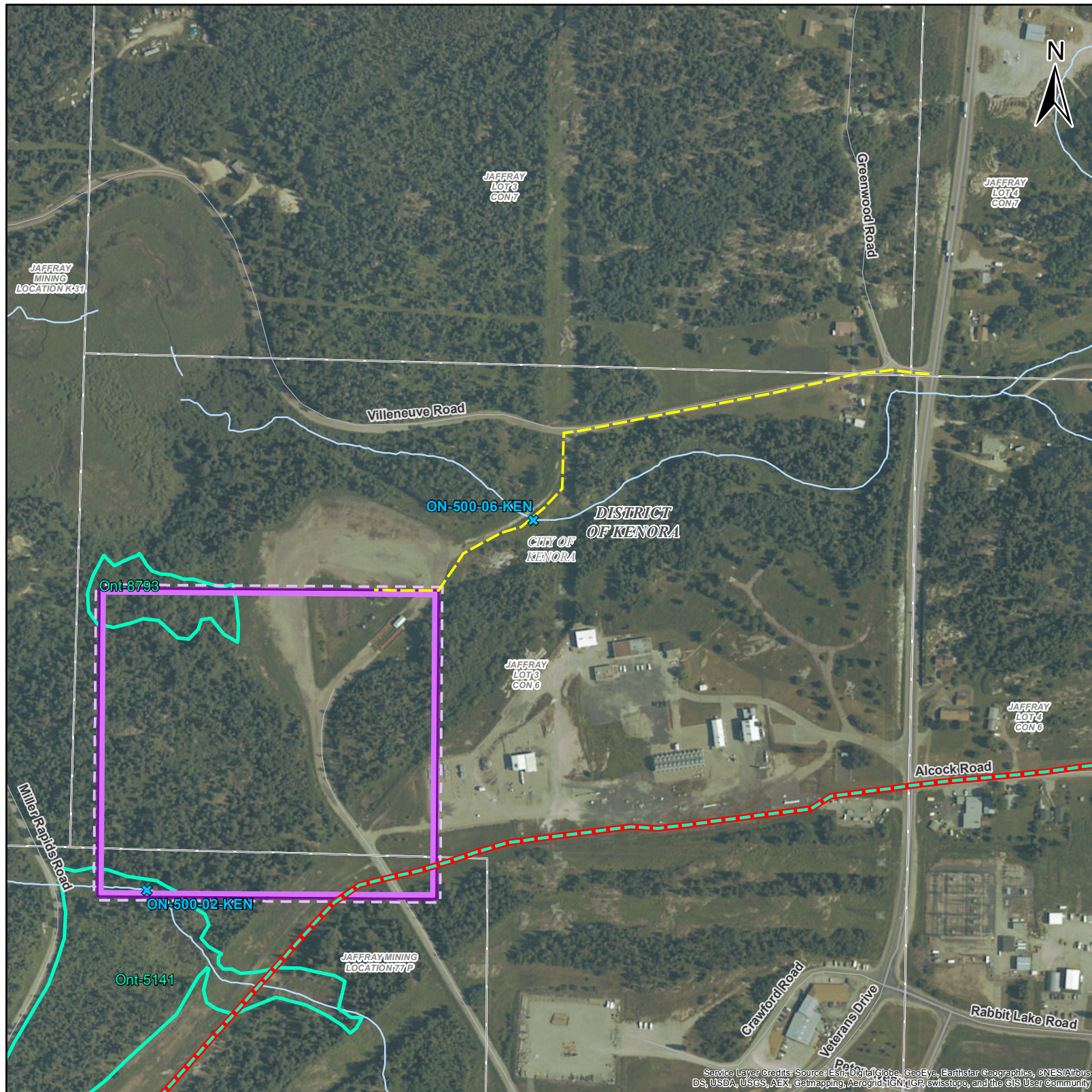
Last Modified / Dernière modification: 11/25/2015 By: bneates



Sources: Project data provided by TransCanada Pipelines Limited. Base data provided by the Governments of Canada, Manitoba, Ontario and Quebec. / Sources: Données sur le projet fournies par TransCanada Pipelines Limited. Données de base fournies par les gouvernements du Canada et du Manitoba, de l'Ontario, et du Québec.

ENERGY EAST PIPELINE PROJECT / PROJET D'OLÉODUC ÉNERGIE EST
 ENVIRONMENTAL FIGURES / FIGURE DES CONSIDÉRATIONS ENVIRONNEMENTALES
Ontario Segment Index / Index du segment Ontario

Last Modified / Dernière modification: 11/25/2015 By: bneates



AERIAL PHOTOGRAPHY DATE / DATE DES PHOTOGRAPHIES AÉRIENNES: 2008 - 2012

THE CURRENT VIEW OF THE FACILITY IS APPROXIMATE. FACILITY SIZE AND ORIENTATION WILL BE FURTHER REFINED DURING DETAILED ENGINEERING TO AVOID OVERLAP WITH EXISTING ROADS AND OTHER INFRASTRUCTURE, AND TO ALIGN WITH PROPERTY BOUNDARIES BASED ON DISCUSSIONS WITH POTENTIALLY AFFECTED LANDOWNERS.

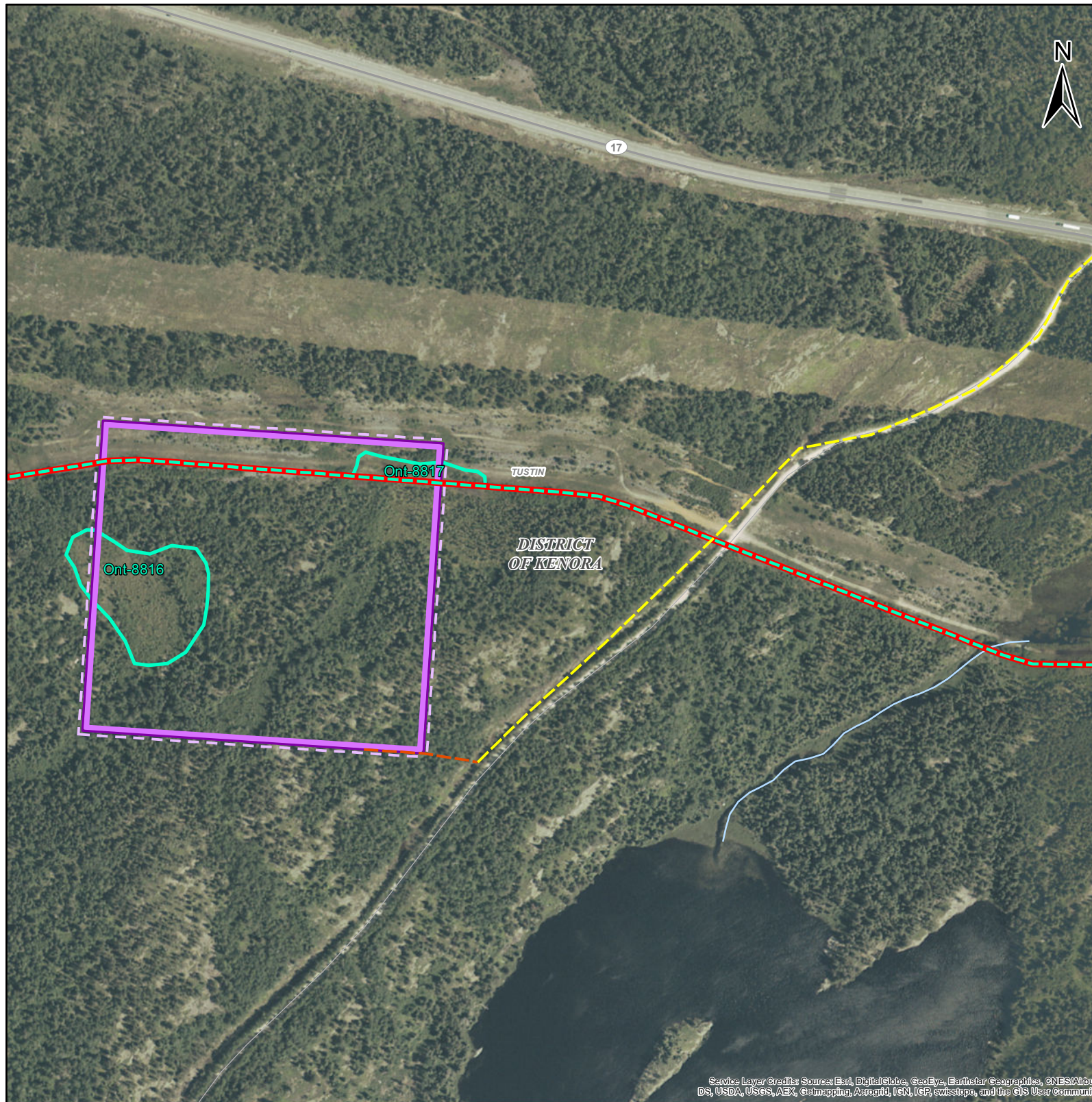
PERMANENT ACCESS ROAD TO THE FACILITY IS PRELIMINARY AND WILL BE REFINED DURING DETAILED ENGINEERING DESIGN.

LEGEND / LÉGENDE	
	WATERCOURSE FISH HABITAT / COURS D'EAU REPRÉSENTANT UN HABITAT DE POISSON
	WATERCOURSE NOT FISH HABITAT / COURS D'EAU NE REPRÉSENTANT PAS UN HABITAT DE POISSON
	WILDLIFE FEATURE / ÉLÉMENTS FAUNIQUES
	ECOLOGICAL COMMUNITY OF MANAGEMENT CONCERN / COMMUNAUTÉ ÉCOLOGIQUE D'INTÉRÊT POUR LA CONSERVATION
	GOLDEN WINGED WARBLER CRITICAL HABITAT / HABITAT ESSENTIEL DE LA PARULINE À AILES DORÉES
	WETLAND / MILIEU HUMIDE
	ACCESS ROAD - EXISTING / CHEMIN D'ACCÈS - EXISTANT
	ACCESS ROAD - NEW / CHEMIN D'ACCÈS - NOUVEAU
	CONVERSION PIPELINE / PIPELINE DE CONVERSION
	NEW PIPELINE / NOUVEAU PIPELINE
	PUMP STATION WITH ELECTRIC POWER / STATION DE POMPAGE ALIMENTÉE À L'ÉLECTRICITÉ
	PUMP STATION WITH GAS TURBINE GENERATED POWER / STATION DE POMPAGE ALIMENTÉE AU GAZ
	SILT FENCE LOCATION / BARRIÈRE À SÉDIMENTS
	TANK TERMINAL FENCE BOUNDARY / LIMITE DE LA CLÔTURE DU TERMINAL DE RÉSERVOIRS
	PROVINCIAL PARK / PARC PROVINCIAL
	PRESSURE CONTROL STATION / STATION DE CONTRÔLE DE LA PRESSION

ADJACENT LAND USE / UTILISATION DU SOL LAND OWNERSHIP / TENURE DES TERRES	FORESTED PRIVATE
DESCRIPTION / DESCRIPTION	ZRL/3 TO 4
SOIL / SOL SALVAGE INFORMATION / INFORMATION RELATIVE À LA PRÉSERVATION DU SOL	1. STRIPPING/GRUBBING UP TO 15 CM FOR FORESTED AREAS. 2. STRIPPING UP TO 15 CM FOR WETLANDS 3. PLACE IN PERMANENT STOCK PILE IN DESIGNATED LOCATION. CONTOUR TO A STABLE PROFILE. 4. WHERE BOTH FORESTED AND CULTIVATED LAND-USE IS ENCOUNTERED WITHIN THE FOOTPRINT, SURFACE MATERIALS AND/ OR TOPSOIL CONSERVED SHALL BE PLACED AND CONTOURED IN A SINGLE PERMANENT STOCKPILE. CARE SHALL BE TAKEN TO MINIMIZE MIXING OF THE SURFACE MATERIALS AND/ OR TOPSOIL PILES DURING PLACEMENT AND CONTOURING. 5. WHERE OPEN WATER OR SATURATED SOILS ARE ENCOUNTERED THAT PRECLUDE PRACTICAL SOIL/ SURFACE MATERIALS SALVAGE, AS DETERMINED BY THE EI, STRIPPING IN THESE AREAS IS NOT REQUIRED.
SPECIAL MATERIALS HANDLING / MANUTENTION PARTICULIÈRE DU MATÉRIEL	NO SPECIAL MATERIAL HANDLING REQUIRED.
VEGETATION AND WETLAND / VÉGÉTATION ET MILIEU HUMIDE	ONT-5141 & ONT-8793: WETLAND COMPENSATION MAY BE REQUIRED FOR PERMANENT CHANGES TO WETLANDS WITHIN THE SITE FOOTPRINT. TIMBER SALVAGE: TO BE DETERMINED
WILDLIFE / FAUNE	AVOID CONSTRUCTION DURING THE NESTING PERIOD FOR MIGRATORY BIRDS (APRIL 21 TO AUGUST 14), WHERE POSSIBLE. WHERE NOT POSSIBLE, IMPLEMENT THE BIRD NEST MITIGATION PLAN.
FISHERIES / FAUNE AQUATIQUE	ON-500-02-KEN: UNNAMED TRIBUTARY TO WINNIPEG RIVER / FISH HABITAT / RAP: SEPTEMBER 1 TO JUNE 15. ON-500-06-KEN: UNNAMED TRIBUTARY TO WINNIPEG RIVER / FISH HABITAT / RAP: SEPTEMBER 1 TO JUNE 15. ON-500-02-KEN: NO IN-WATER OR NEAR-WATER WORK UNLESS OTHERWISE APPROVED BY APPROPRIATE REGULATORY AGENCY. MAINTAIN RIPARIAN BUFFER OF 30 M.
HISTORICAL RESOURCE / POTENTIEL ARCHÉOLOGIQUE	TO BE PROVIDED IN A SUBSEQUENT UPDATE.
PALAEONTOLOGICAL RESOURCE / SITE D'INTÉRÊT PALÉONTOLOGIQUE	NO PALAEONTOLOGICAL RESOURCES IDENTIFIED.
OTHER CONSTRUCTION CONSIDERATIONS / AUTRES CONSIDÉRATIONS RELIÉE À LA CONSTRUCTION	POTENTIAL RISK FOR HIGH WATER EROSION OF EXPOSED SOILS. SEE SOIL EROSION CONTINGENCY PLAN. MAINTAIN SURFACE WATER DRAINAGE AROUND THE PERIMETER BASED ON FINAL GRADE.
ACCESS CONTROL / OTHER / GESTION DES ACCÈS / AUTRES	NO ACCESS CONTROL REQUIRED
EROSION AND SEDIMENT CONTROL / CONTRÔLE DE L'ÉROSION ET DES SÉDIMENTS	TEMPORARY SILT FENCE LOCATION TO BE FIELD VERIFIED BY THE ENVIRONMENTAL INSPECTOR.
RECLAMATION / REMISE EN ÉTAT	SEED PERMANENT TOPSOIL/SURFACE MATERIALS STOCKPILES, AND STABILIZE AS REQUIRED TO PREVENT EROSION, SEED MIX TO BE DETERMINED.

SOIL DESCRIPTION / DESCRIPTION DU SOL	FOOTNOTES / NOTES:
FSTy3 to 4 SLOPE CLASS / CLASSE DE PENTE PHASE / PHASE SOIL SERIES / SÉRIE DE SOLS	1. REFER TO THE ENVIRONMENTAL PROTECTION PLAN FOR A COMPLETE UNDERSTANDING OF THE MITIGATION REQUIREMENTS FOR THE PROJECT. / SE RÉFÉRER AU PLAN DE PROTECTION DE L'ENVIRONNEMENT POUR UNE COMPRÉHENSION EXHAUSTIVE DES MESURES D'ATTÉNUATION LIÉES AU PROJET. 2. SOILS SALVAGED FROM THE DEVELOPMENT FOOTPRINT SHOULD BE BASED ON THE DESIGN, LAYOUT AND CORRESPONDING SPACE REQUIREMENTS, INCLUDING ROADS, DITCHES, SITE DRAINAGE / WATER CONTROLS, ETC. REFER TO APPLICABLE PLOT PLANS, CIVIL DRAWINGS / LA PRÉSERVATION DU SOL LIÉE AU DÉVELOPPEMENT DE LA ZONE D'IMPLANTATION DU PROJET DEVRAIT ÊTRE ÉTABLIE SELON LA CONCEPTION, LA CONFIGURATION ET L'ESPACE REQUIS (INCLUANT LES ROUTES, LES FOSSÉS, LES POSTES DE RÉGULATION DU DRAINAGE ET DE L'ÉCOULEMENT DE L'EAU, ETC.). SE RÉFÉRER AUX PLANS D'AMÉNAGEMENT ET AUX DESSINS DE GÉNIE CIVIL PERTINENTS. 3. EXAMPLES: ACID ROCK DRAINAGE (ARD), CONTAMINATED SOILS, CONTAMINATED WATER. / EXEMPLES: DRAINAGE ACIDE (DA), SOLS CONTAMINÉS, EAU CONTAMINÉE.

SHEET REVISION / N° RÉVISION REV_A 20151130	INTERNAL ID / IDENTIFIANT INTERNE 1	PROJECTION / PROJECTION UTM ZONE 15	GATUM / SYSTÈME GÉODÉSIQUE NAD 83	PREPARED BY / PRÉPARE PAR 	ENERGY EAST PIPELINE PROJECT / PROJET OLÉODUC ÉNERGIE EST Environmental Figure / Figure des considérations environnementales Ontario Pump Station / Station de pompage 26-Kenora Page / Page 1 of / de 30
Sources: Project data and high resolution imagery provided by TransCanada Pipelines Limited. Base data provided by the Governments of Canada, Alberta, Saskatchewan, Manitoba and Ontario. / Sources: Les données spécifiques à ce projet et images à haute résolution sont fournies par TransCanada Pipelines Limited. Les données de base sont fournies par les gouvernements du Canada, de l'Alberta, de la Saskatchewan, du Manitoba et de l'Ontario.		DATE / DATE 20151123	PREPARED FOR / PRÉPARE POUR 		



Service Layer Credits: Source: Esri, DigitalGlobe, GeoEye, Earthstar Geographics, CNES/Airbus DS, USDA, USGS, AEX, Getmapping, Aerogrid, IGN, IGP, swisstopo, and the GIS User Community

AERIAL PHOTOGRAPHY DATE / DATE DES PHOTOGRAPHIES AÉRIENNES: 2008 - 2012

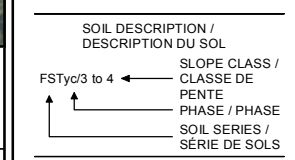
THE CURRENT VIEW OF THE FACILITY IS APPROXIMATE. FACILITY SIZE AND ORIENTATION WILL BE FURTHER REFINED DURING DETAILED ENGINEERING TO AVOID OVERLAP WITH EXISTING ROADS AND OTHER INFRASTRUCTURE, AND TO ALIGN WITH PROPERTY BOUNDARIES BASED ON DISCUSSIONS WITH POTENTIALLY AFFECTED LANDOWNERS.

PERMANENT ACCESS ROAD TO THE FACILITY IS PRELIMINARY AND WILL BE REFINED DURING DETAILED ENGINEERING DESIGN.

LEGEND / LÉGENDE

- WATERCOURSE FISH HABITAT / COURS D'EAU REPRÉSENTANT UN HABITAT DE POISSON
- WATERCOURSE NOT FISH HABITAT / COURS D'EAU NE REPRÉSENTANT PAS UN HABITAT DE POISSON
- WILDLIFE FEATURE / ÉLÉMENTS FAUNIQUES
- ECOLOGICAL COMMUNITY OF MANAGEMENT CONCERN / COMMUNAUTÉ ÉCOLOGIQUE D'INTÉRÊT POUR LA CONSERVATION
- GOLDEN WINGED WARBLER CRITICAL HABITAT / HABITAT ESSENTIEL DE LA PARULINE À AILES DORÉES
- WETLAND / MILIEU HUMIDE
- ACCESS ROAD - EXISTING / CHEMIN D'ACCÈS - EXISTANT
- ACCESS ROAD - NEW / CHEMIN D'ACCÈS - NOUVEAU
- CONVERSION PIPELINE / PIPELINE DE CONVERSION
- NEW PIPELINE / NOUVEAU PIPELINE
- PRESSURE CONTROL STATION / STATION DE CONTRÔLE DE LA PRESSION
- PUMP STATION WITH ELECTRIC POWER / STATION DE POMPAGE ALIMENTÉE À L'ÉLECTRICITÉ
- PUMP STATION WITH GAS TURBINE GENERATED POWER / STATION DE POMPAGE ALIMENTÉE AU GAZ
- SILT FENCE LOCATION / BARRIÈRE À SÉDIMENTS
- TANK TERMINAL FENCE BOUNDARY / LIMITE DE LA CLÔTURE DU TERMINAL DE RÉSERVOIRS
- PROVINCIAL PARK / PARC PROVINCIAL

ADJACENT LAND USE / UTILISATION DU SOL LAND OWNERSHIP / TENURE DES TERRES	FORESTED CROWN
DESCRIPTION / DESCRIPTION	DEC/2 TO 5
SOIL / SOL SALVAGE INFORMATION / INFORMATION RELATIVE À LA PRÉSERVATION DU SOL	1. STRIPPING/GRUBBING UP TO 15 CM FOR FORESTED AREAS. 2. STRIPPING UP TO 15 CM FOR WETLANDS 3. PLACE IN PERMANENT STOCK PILE IN DESIGNATED LOCATION. CONTOUR TO A STABLE PROFILE. 4. WHERE BOTH FORESTED AND CULTIVATED LAND-USE IS ENCOUNTERED WITHIN THE FOOTPRINT, SURFACE MATERIALS AND/ OR TOPSOIL CONSERVED SHALL BE PLACED AND CONTOURED IN A SINGLE PERMANENT STOCKPILE. CARE SHALL BE TAKEN TO MINIMIZE MIXING OF THE SURFACE MATERIALS AND/ OR TOPSOIL PILES DURING PLACEMENT AND CONTOURING. 5. WHERE OPEN WATER OR SATURATED SOILS ARE ENCOUNTERED THAT PRECLUDE PRACTICAL SOIL/ SURFACE MATERIALS SALVAGE, AS DETERMINED BY THE EI, STRIPPING IN THESE AREAS IS NOT REQUIRED.
SPECIAL MATERIALS HANDLING / MANUTENTION PARTICULIÈRE DU MATÉRIEL	NO SPECIAL MATERIAL HANDLING REQUIRED.
VEGETATION AND WETLAND / VÉGÉTATION ET MILIEU HUMIDE	ONT-8816 & ONT-8817: WETLAND COMPENSATION MAY BE REQUIRED FOR PERMANENT CHANGES TO WETLANDS WITHIN THE SITE FOOTPRINT. TIMBER SALVAGE: TO BE DETERMINED
WILDLIFE / FAUNE	AVOID CONSTRUCTION DURING THE NESTING PERIOD FOR MIGRATORY BIRDS (APRIL 21 TO AUGUST 14), WHERE POSSIBLE. WHERE NOT POSSIBLE, IMPLEMENT THE BIRD NEST MITIGATION PLAN.
FISHERIES / FAUNE AQUATIQUE	NO WATERCOURSES OR FISHERIES RESOURCES IDENTIFIED.
HISTORICAL RESOURCE / POTENTIEL ARCHÉOLOGIQUE	TO BE PROVIDED IN A SUBSEQUENT UPDATE.
PALAEONTOLOGICAL RESOURCE / SITE D'INTÉRÊT PALÉONTOLOGIQUE	NO PALAEONTOLOGICAL RESOURCES IDENTIFIED.
OTHER CONSTRUCTION CONSIDERATIONS / AUTRES CONSIDÉRATIONS RELIÉE À LA CONSTRUCTION	POTENTIAL RISK FOR HIGH WIND AND HIGH WATER EROSION OF EXPOSED SOILS. SEE SOIL EROSION CONTINGENCY PLAN. MAINTAIN SURFACE WATER DRAINAGE AROUND THE PERIMETER BASED ON FINAL GRADE.
ACCESS CONTROL / OTHER / GESTION DES ACCÈS / AUTRES	NO ACCESS CONTROL REQUIRED
EROSION AND SEDIMENT CONTROL / CONTRÔLE DE L'ÉROSION ET DES SÉDIMENTS	TEMPORARY SILT FENCE LOCATION TO BE FIELD VERIFIED BY THE ENVIRONMENTAL INSPECTOR.
RECLAMATION / REMISE EN ÉTAT	SEED PERMANENT TOPSOIL/SURFACE MATERIALS STOCKPILES, AND STABILIZE AS REQUIRED TO PREVENT EROSION, SEED MIX TO BE DETERMINED.



FOOTNOTES / NOTES:

- REFER TO THE ENVIRONMENTAL PROTECTION PLAN FOR A COMPLETE UNDERSTANDING OF THE MITIGATION REQUIREMENTS FOR THE PROJECT. / SE RÉFÉRER AU PLAN DE PROTECTION DE L'ENVIRONNEMENT POUR UNE COMPRÉHENSION EXHAUSTIVE DES MESURES D'ATTÉNUATION LIÉES AU PROJET.
- SOILS SALVAGED FROM THE DEVELOPMENT FOOTPRINT SHOULD BE BASED ON THE DESIGN, LAYOUT AND CORRESPONDING SPACE REQUIREMENTS, INCLUDING ROADS, DITCHES, SITE DRAINAGE / WATER CONTROLS, ETC. REFER TO APPLICABLE PLOT PLANS, CIVIL DRAWINGS / LA PRÉSERVATION DU SOL LIÉE AU DÉVELOPPEMENT DE LA ZONE D'IMPLANTATION DU PROJET DEVRAIT ÊTRE ÉTABLIE SELON LA CONCEPTION, LA CONFIGURATION ET L'ESPACE REQUIS (INCLUANT LES ROUTES, LES FOSSÉS, LES POSTES DE RÉGULATION DU DRAINAGE ET DE L'ÉCOULEMENT DE L'EAU, ETC.). SE RÉFÉRER AUX PLANS D'AMÉNAGEMENT ET AUX DESSINS DE GÉNIE CIVIL PERTINENTS.
- EXAMPLES: ACID ROCK DRAINAGE (ARD), CONTAMINATED SOILS, CONTAMINATED WATER. / EXEMPLES: DRAINAGE ACIDE (DA), SOLS CONTAMINÉS, EAU CONTAMINÉE.

SHEET REVISION / N° RÉVISION REV_A 20151130	INTERNAL ID / IDENTIFIANT INTERNE 1	PROJECTION / PROJECTION UTM ZONE 15	GATUM / SYSTÈME GÉODÉSIQUE NAD 83	PREPARED BY / PRÉPARE PAR
Sources: Project data and high resolution imagery provided by TransCanada Pipelines Limited. Base data provided by the Governments of Canada, Alberta, Saskatchewan, Manitoba and Ontario. / Sources: Les données spécifiques à ce projet et images à haute résolution sont fournies par TransCanada Pipelines Limited. Les données de base sont fournies par les gouvernements du Canada, de l'Alberta, de la Saskatchewan, du Manitoba et de l'Ontario.		DATE / DATE 20151123	PREPARED FOR / PRÉPARE POUR 	

ENERGY EAST PIPELINE PROJECT / PROJET OLÉODUC ÉNERGIE EST

Environmental Figure / Figure des considérations environnementales

Ontario Pump Station / Station de pompage

27-Machin

Page / Page 2 of / de 30



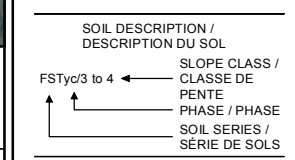
Service Layer Credits: Source: Esri, DigitalGlobe, GeoEye, Earthstar Geographics, CNES/Airbus DS, USDA, USGS, AEX, Getmapping, Aerogrid, IGN, IGP, swisstopo, and the GIS User Community

AERIAL PHOTOGRAPHY DATE / DATE DES PHOTOGRAPHIES AÉRIENNES: 2008 - 2012

THE CURRENT VIEW OF THE FACILITY IS APPROXIMATE. FACILITY SIZE AND ORIENTATION WILL BE FURTHER REFINED DURING DETAILED ENGINEERING TO AVOID OVERLAP WITH EXISTING ROADS AND OTHER INFRASTRUCTURE, AND TO ALIGN WITH PROPERTY BOUNDARIES BASED ON DISCUSSIONS WITH POTENTIALLY AFFECTED LANDOWNERS. PERMANENT ACCESS ROAD TO THE FACILITY IS PRELIMINARY AND WILL BE REFINED DURING DETAILED ENGINEERING DESIGN.

LEGEND / LÉGENDE			
	WATERCOURSE FISH HABITAT / COURS D'EAU REPRÉSENTANT UN HABITAT DE POISSON		WETLAND / MILIEU HUMIDE
	WATERCOURSE NOT FISH HABITAT / COURS D'EAU NE REPRÉSENTANT PAS UN HABITAT DE POISSON		ACCESS ROAD - EXISTING / CHEMIN D'ACCÈS - EXISTANT
	WILDLIFE FEATURE / ÉLÉMENTS FAUNIQUES		ACCESS ROAD - NEW / CHEMIN D'ACCÈS - NOUVEAU
	ECOLOGICAL COMMUNITY OF MANAGEMENT CONCERN / COMMUNAUTÉ ÉCOLOGIQUE D'INTÉRÊT POUR LA CONSERVATION		CONVERSION PIPELINE / PIPELINE DE CONVERSION
	GOLDEN WINGED WARBLER CRITICAL HABITAT / HABITAT ESSENTIEL DE LA PARULINE À AILES DORÉES		NEW PIPELINE / NOUVEAU PIPELINE
			PUMP STATION WITH ELECTRIC POWER / STATION DE POMPAGE ALIMENTÉE À L'ÉLECTRICITÉ
			PUMP STATION WITH GAS TURBINE GENERATED POWER / STATION DE POMPAGE ALIMENTÉE AU GAZ
			SILT FENCE LOCATION / BARRIÈRE À SÉDIMENTS
			TANK TERMINAL FENCE BOUNDARY / LIMITE DE LA CLÔTURE DU TERMINAL DE RÉSERVOIRS
			PROVINCIAL PARK / PARC PROVINCIAL
			PRESSURE CONTROL STATION / STATION DE CONTRÔLE DE LA PRESSION

ADJACENT LAND USE / UTILISATION DU SOL LAND OWNERSHIP / TENURE DES TERRES		FORESTED PRIVATE
SOIL / SOL	DESCRIPTION / DESCRIPTION	SUX/3
	SALVAGE INFORMATION / INFORMATION RELATIVE À LA PRÉSERVATION DU SOL	1. STRIPPING/GRUBBING UP TO 15 CM FOR FORESTED AREAS. 2. PLACE IN PERMANENT STOCK PILE IN DESIGNATED LOCATION. CONTOUR TO A STABLE PROFILE. 3. WHERE BOTH FORESTED AND CULTIVATED LAND-USE IS ENCOUNTERED WITHIN THE FOOTPRINT, SURFACE MATERIALS AND/ OR TOPSOIL CONSERVED SHALL BE PLACED AND CONTOURED IN A SINGLE PERMANENT STOCKPILE. CARE SHALL BE TAKEN TO MINIMIZE MIXING OF THE SURFACE MATERIALS AND/ OR TOPSOIL PILES DURING PLACEMENT AND CONTOURING. 4. WHERE OPEN WATER OR SATURATED SOILS ARE ENCOUNTERED THAT PRECLUDE PRACTICAL SOIL/ SURFACE MATERIALS SALVAGE, AS DETERMINED BY THE EI, STRIPPING IN THESE AREAS IS NOT REQUIRED.
SPECIAL MATERIALS HANDLING / MANUTENTION PARTICULIÈRE DU MATÉRIEL		NO SPECIAL MATERIAL HANDLING REQUIRED.
VEGETATION AND WETLAND / VÉGÉTATION ET MILIEU HUMIDE		NO VEGETATION OR WETLAND RESOURCES IDENTIFIED. TIMBER SALVAGE: TO BE DETERMINED
WILDLIFE / FAUNE		AVOID CONSTRUCTION DURING THE NESTING PERIOD FOR MIGRATORY BIRDS (APRIL 21 TO AUGUST 14), WHERE POSSIBLE. WHERE NOT POSSIBLE, IMPLEMENT THE BIRD NEST MITIGATION PLAN.
FISHERIES / FAUNE AQUATIQUE		NO WATERCOURSES OR FISHERIES RESOURCES IDENTIFIED.
HISTORICAL RESOURCE / POTENTIEL ARCHÉOLOGIQUE		TO BE PROVIDED IN A SUBSEQUENT UPDATE.
PALAEOLOGICAL RESOURCE / SITE D'INTÉRÊT PALÉONTOLOGIQUE		NO PALAEOLOGICAL RESOURCES IDENTIFIED.
OTHER CONSTRUCTION CONSIDERATIONS / AUTRES CONSIDÉRATIONS RELIÉE À LA CONSTRUCTION		POTENTIAL RISK FOR HIGH WIND EROSION OF EXPOSED SOILS. SEE SOIL EROSION CONTINGENCY PLAN.
ACCESS CONTROL / OTHER / GESTION DES ACCÈS / AUTRES		NO ACCESS CONTROL REQUIRED
EROSION AND SEDIMENT CONTROL / CONTRÔLE DE L'ÉROSION ET DES SÉDIMENTS		TEMPORARY SILT FENCE LOCATION TO BE FIELD VERIFIED BY THE ENVIRONMENTAL INSPECTOR.
RECLAMATION / REMISE EN ÉTAT		SEED PERMANENT TOPSOIL/SURFACE MATERIALS STOCKPILES, AND STABILIZE AS REQUIRED TO PREVENT EROSION, SEED MIX TO BE DETERMINED.



FOOTNOTES / NOTES:

- REFER TO THE ENVIRONMENTAL PROTECTION PLAN FOR A COMPLETE UNDERSTANDING OF THE MITIGATION REQUIREMENTS FOR THE PROJECT. / SE RÉFÉRER AU PLAN DE PROTECTION DE L'ENVIRONNEMENT POUR UNE COMPRÉHENSION EXHAUSTIVE DES MESURES D'ATTÉNUATION LIÉES AU PROJET.
- SOILS SALVAGED FROM THE DEVELOPMENT FOOTPRINT SHOULD BE BASED ON THE DESIGN, LAYOUT AND CORRESPONDING SPACE REQUIREMENTS, INCLUDING ROADS, DITCHES, SITE DRAINAGE / WATER CONTROLS, ETC. REFER TO APPLICABLE PLOT PLANS, CIVIL DRAWINGS. / LA PRÉSERVATION DU SOL LIÉE AU DÉVELOPPEMENT DE LA ZONE D'IMPLANTATION DU PROJET DEVRAIT ÊTRE ÉTABLIE SELON LA CONCEPTION, LA CONFIGURATION ET L'ESPACE REQUIS (INCLUANT LES ROUTES, LES FOSSÉS, LES POSTES DE RÉGULATION DU DRAINAGE ET DE L'ÉCOULEMENT DE L'EAU, ETC.). SE RÉFÉRER AUX PLANS D'AMÉNAGEMENT ET AUX DESSINS DE GÉNIE CIVIL PERTINENTS.
- EXAMPLES: ACID ROCK DRAINAGE (ARD), CONTAMINATED SOILS, CONTAMINATED WATER. / EXEMPLES: DRAINAGE ACIDE (DA), SOLS CONTAMINÉS, EAU CONTAMINÉE.

SHEET REVISION / N° RÉVISION REV_A 20151130	INTERNAL ID / IDENTIFIANT INTERNE 1	PROJECTION / PROJECTION UTM ZONE 15	GATUM / SYSTÈME GÉODÉSIQUE NAD 83
Sources: Project data and high resolution imagery provided by TransCanada Pipelines Limited. Base data provided by the Governments of Canada, Alberta, Saskatchewan, Manitoba and Ontario. / Sources: Les données spécifiques à ce projet et images à haute résolution sont fournies par TransCanada Pipelines Limited. Les données de base sont fournies par les gouvernements du Canada, de l'Alberta, de la Saskatchewan, du Manitoba et de l'Ontario.		DATE / DATE 20151123	PREPARED FOR / PRÉPARE POUR
123511564-0304		Original Page Size / Taille de page originale: 11 x 17	

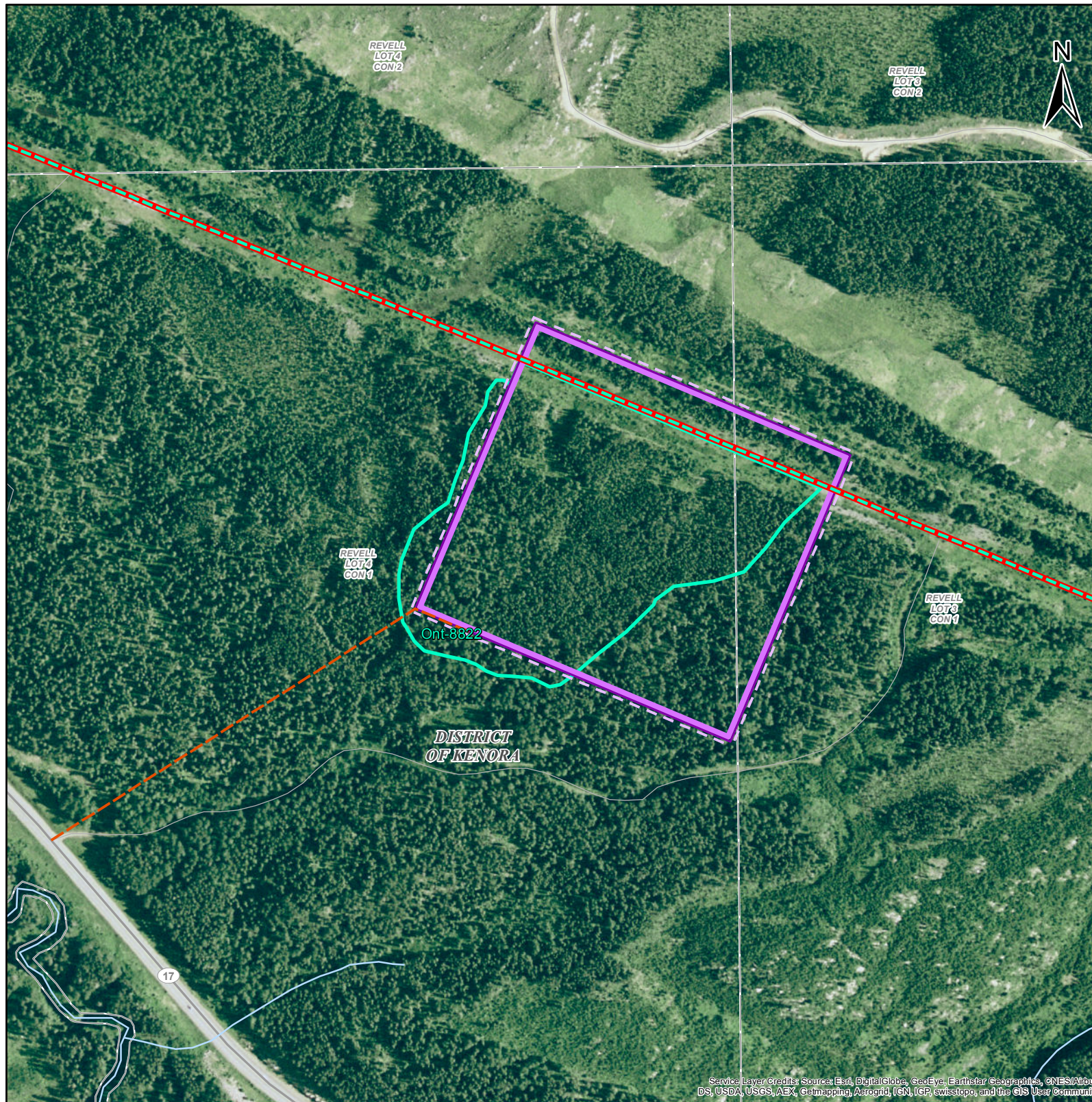
ENERGY EAST PIPELINE PROJECT / PROJET OLÉODUC ÉNERGIE EST

Environmental Figure / Figure des considérations environnementales

Ontario Pump Station / Station de pompage

28-Dryden

Page / Page 3 of / de 30



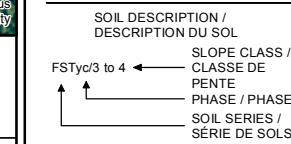
AERIAL PHOTOGRAPHY DATE / DATE DES PHOTOGRAPHIES AÉRIENNES: 2008 - 2012

THE CURRENT VIEW OF THE FACILITY IS APPROXIMATE. FACILITY SIZE AND ORIENTATION WILL BE FURTHER REFINED DURING DETAILED ENGINEERING TO AVOID OVERLAP WITH EXISTING ROADS AND OTHER INFRASTRUCTURE, AND TO ALIGN WITH PROPERTY BOUNDARIES BASED ON DISCUSSIONS WITH POTENTIALLY AFFECTED LANDOWNERS.

PERMANENT ACCESS ROAD TO THE FACILITY IS PRELIMINARY AND WILL BE REFINED DURING DETAILED ENGINEERING DESIGN.

LEGEND / LÉGENDE	
WATERCOURSE FISH HABITAT / COURS D'EAU REPRÉSENTANT UN HABITAT DE POISSON	WETLAND / MILIEU HUMIDE
WATERCOURSE NOT FISH HABITAT / COURS D'EAU NE REPRÉSENTANT PAS UN HABITAT DE POISSON	ACCESS ROAD - EXISTING / CHEMIN D'ACCÈS - EXISTANT
WILDLIFE FEATURE / ÉLÉMENTS FAUNTIQUES	ACCESS ROAD - NEW / CHEMIN D'ACCÈS - NOUVEAU
ECOLOGICAL COMMUNITY OF MANAGEMENT CONCERN / COMMUNAUTÉ ÉCOLOGIQUE D'INTÉRÊT POUR LA CONSERVATION	CONVERSION PIPELINE / PIPELINE DE CONVERSION
GOLDEN WINGED WARBLER CRITICAL HABITAT / HABITAT ESSENTIEL DE LA PARULINE À AILES DORÉES	NEW PIPELINE / NOUVEAU PIPELINE
	PUMP STATION WITH ELECTRIC POWER / STATION DE POMPAGE ALIMENTÉE À L'ÉLECTRICITÉ
	PUMP STATION WITH GAS TURBINE GENERATED POWER / STATION DE POMPAGE ALIMENTÉE AU GAZ
	SILT FENCE LOCATION / BARRIÈRE À SÉDIMENTS
	TANK TERMINAL FENCE BOUNDARY / LIMITE DE LA CLÔTURE DU TERMINAL DE RÉSERVOIRS
	PROVINCIAL PARK / PARC PROVINCIAL
	PRESSURE CONTROL STATION / STATION DE CONTRÔLE DE LA PRESSION

ADJACENT LAND USE / UTILISATION DU SOL LAND OWNERSHIP / TENURE DES TERRES		FORESTED CROWN
DESCRIPTION / DESCRIPTION		DEC/2 TO 5
SOIL / SOL SALVAGE INFORMATION / INFORMATION RELATIVE À LA PRÉSERVATION DU SOL		1. STRIPPING/GRUBBING UP TO 15 CM FOR FORESTED AREAS. 2. STRIPPING UP TO 15 CM FOR WETLANDS 3. PLACE IN PERMANENT STOCK PILE IN DESIGNATED LOCATION. CONTOUR TO A STABLE PROFILE. 4. WHERE BOTH FORESTED AND CULTIVATED LAND-USE IS ENCOUNTERED WITHIN THE FOOTPRINT, SURFACE MATERIALS AND/ OR TOPSOIL CONSERVED SHALL BE PLACED AND CONTOURED IN A SINGLE PERMANENT STOCKPILE. CARE SHALL BE TAKEN TO MINIMIZE MIXING OF THE SURFACE MATERIALS AND/ OR TOPSOIL PILES DURING PLACEMENT AND CONTOURING. 5. WHERE OPEN WATER OR SATURATED SOILS ARE ENCOUNTERED THAT PRECLUDE PRACTICAL SOIL/ SURFACE MATERIALS SALVAGE, AS DETERMINED BY THE EI, STRIPPING IN THESE AREAS IS NOT REQUIRED.
SPECIAL MATERIALS HANDLING / MANUTENTION PARTICULIÈRE DU MATÉRIEL		NO SPECIAL MATERIAL HANDLING REQUIRED.
VEGETATION AND WETLAND / VÉGÉTATION ET MILIEU HUMIDE		ONT-8822: WETLAND COMPENSATION MAY BE REQUIRED FOR PERMANENT CHANGES TO WETLANDS WITHIN THE SITE FOOTPRINT. TIMBER SALVAGE: TO BE DETERMINED
WILDLIFE / FAUNE		AVOID CONSTRUCTION DURING THE NESTING PERIOD FOR MIGRATORY BIRDS (APRIL 21 TO AUGUST 14), WHERE POSSIBLE. WHERE NOT POSSIBLE, IMPLEMENT THE BIRD NEST MITIGATION PLAN.
FISHERIES / FAUNE AQUATIQUE		NO WATERCOURSES OR FISHERIES RESOURCES IDENTIFIED.
HISTORICAL RESOURCE / POTENTIEL ARCHÉOLOGIQUE		TO BE PROVIDED IN A SUBSEQUENT UPDATE.
PALAEOLOGICAL RESOURCE / SITE D'INTÉRÊT PALÉONTOLOGIQUE		NO PALAEOLOGICAL RESOURCES IDENTIFIED.
OTHER CONSTRUCTION CONSIDERATIONS / AUTRES CONSIDÉRATIONS RELIÉE À LA CONSTRUCTION		POTENTIAL RISK FOR HIGH WIND AND HIGH WATER EROSION OF EXPOSED SOILS. SEE SOIL EROSION CONTINGENCY PLAN. MAINTAIN SURFACE WATER DRAINAGE AROUND THE PERIMETER BASED ON FINAL GRADE.
ACCESS CONTROL / OTHER / GESTION DES ACCÈS / AUTRES		NO ACCESS CONTROL REQUIRED
EROSION AND SEDIMENT CONTROL / CONTRÔLE DE L'ÉROSION ET DES SÉDIMENTS		TEMPORARY SILT FENCE LOCATION TO BE FIELD VERIFIED BY THE ENVIRONMENTAL INSPECTOR.
RECLAMATION / REMISE EN ÉTAT		SEED PERMANENT TOPSOIL/SURFACE MATERIALS STOCKPILES, AND STABILIZE AS REQUIRED TO PREVENT EROSION, SEED MIX TO BE DETERMINED.



FOOTNOTES / NOTES:

- REFER TO THE ENVIRONMENTAL PROTECTION PLAN FOR A COMPLETE UNDERSTANDING OF THE MITIGATION REQUIREMENTS FOR THE PROJECT. / SE RÉFÉRER AU PLAN DE PROTECTION DE L'ENVIRONNEMENT POUR UNE COMPRÉHENSION EXHAUSTIVE DES MESURES D'ATTENUATION LIÉES AU PROJET.
- SOILS SALVAGED FROM THE DEVELOPMENT FOOTPRINT SHOULD BE BASED ON THE DESIGN, LAYOUT AND CORRESPONDING SPACE REQUIREMENTS, INCLUDING ROADS, DITCHES, SITE DRAINAGE / WATER CONTROLS, ETC. REFER TO APPLICABLE PLOT PLANS, CIVIL DRAWINGS / LA PRÉSERVATION DU SOL LIÉE AU DÉVELOPPEMENT DE LA ZONE D'IMPLANTATION DU PROJET DEVRAIT ÊTRE ÉTABLIE SELON LA CONCEPTION, LA CONFIGURATION ET L'ESPACE REQUIS (INCLUANT LES ROUTES, LES FOSSÉS, LES POSTES DE RÉGULATION DU DRAINAGE ET DE L'ÉCOULEMENT DE L'EAU, ETC.). SE RÉFÉRER AUX PLANS D'AMÉNAGEMENT ET AUX DESSINS DE GÉNIE CIVIL PERTINENTS.
- EXAMPLES: ACID ROCK DRAINAGE (ARD), CONTAMINATED SOILS, CONTAMINATED WATER. / EXEMPLES: DRAINAGE ACIDE (DA), SOLS CONTAMINÉS, EAU CONTAMINÉE.

SHEET REVISION / N° RÉVISION REV_A 20151130	INTERNAL ID / IDENTIFIANT INTERNE 1	PROJECTION / PROJECTION UTM ZONE 15	GATUM / SYSTÈME GÉODÉSIQUE NAD 83	PREPARED BY / PRÉPARE PAR
Sources: Project data and high resolution imagery provided by TransCanada Pipelines Limited. Base data provided by the Governments of Canada, Alberta, Saskatchewan, Manitoba and Ontario. / Sources: Les données spécifiques à ce projet et images à haute résolution sont fournies par TransCanada Pipelines Limited. Les données de base sont fournies par les gouvernements du Canada, de l'Alberta, de la Saskatchewan, du Manitoba et de l'Ontario.		DATE / DATE 20151123	PREPARED FOR / PRÉPARE POUR 	

ENERGY EAST PIPELINE PROJECT / PROJET OLÉODUC ÉNERGIE EST

Environmental Figure / Figure des considérations environnementales

Ontario Pump Station / Station de pompage

29-Ignace

Page / Page 4 of / de 30