











COMPOSANTES DU PROJET / PROJECT COMPONENTS

Zone d'étude étendue (ZÉE)		Extended study area (ESAR)
Tracé		Route
Point de livraison		Delivery point
Station de pompage		Pump station

REPÈRES GÉOGRAPHIQUES / GEOGRAPHICAL LANDMARKS

Frontière nationale		National boundary
Autoroute		Highway
Route nationale		National road
Établissement amérindien		Indian reserve or settlement
Aéroport international		International airport
Municipalité		Municipality

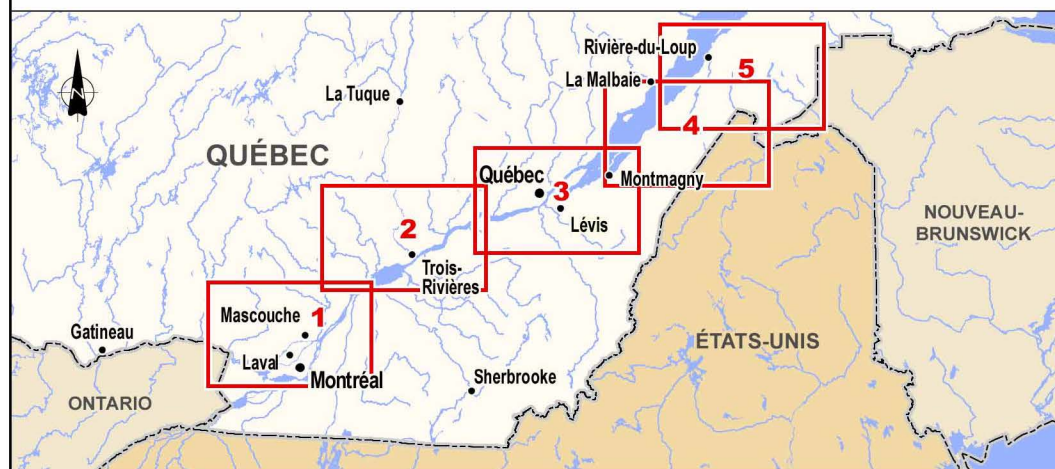
POSSIBILITÉS AGRICOLES DES SOLS*/ / SOIL CAPABILITY FOR AGRICULTURE****

Sol comportant de faibles limitations		Classe 2	Soil with few limitations
Sol comportant des limitations modérées		Classe 3	Soil with moderate limitations
Sol comportant de graves limitations		Classe 4	Soil with severe limitations
Sol comportant des limitations très graves		Classe 5	Soil with very severe limitations
Sol inutilisable pour la culture		Classe 7	Soil with no capability for arable culture
Sol organique		Classe 0	Organic soil
Donnée non disponible			Data not available

324 **PR4.6.66**
 Projet Oléoduc Énergie Est de
 TransCanada – section québécoise
 6211-18-018

NOTES / NOTES

Les classes 1 et 6 sont absentes dans la zone d'étude étendue.	*	Classes 1 and 6 are absent in the extended assessment area.
Seuls les potentiels de sol dominants sont représentés.	**	Only the dominant soil capabilities are represented.



Plan de localisation / Location Map

SOURCES / REFERENCES

- RNCan (BNDT 250k, hydrographie) 2010.
- MRN (BDGA 1M, réseau routier) 2010.
- MRN (BDGA 1M, découpages administratifs) 2012.
- MRN (BDGA 1M, pôles d'occupation) 2010.
- RNCan (BNDT 50k et 250k, pôles d'occupation) 2010.
- ARDA (Inventaires des terres du Canada 50k, agriculture) 2001-2004.

OLÉODUC ÉNERGIE EST
ENERGY EAST PIPELINE

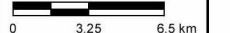


Figure 3-4

Potentiel agricole
Soil Capability for Agriculture

Cartographie / Cartography:
 Chargé de projet / Project Manager:
 Date : 2014-12-02

Anne-Marie Marquis
 Claude Veilleux, ing. & agr.
 Dossier : 3390-141

1 : 325 000

 Québec Lambert, NAD83

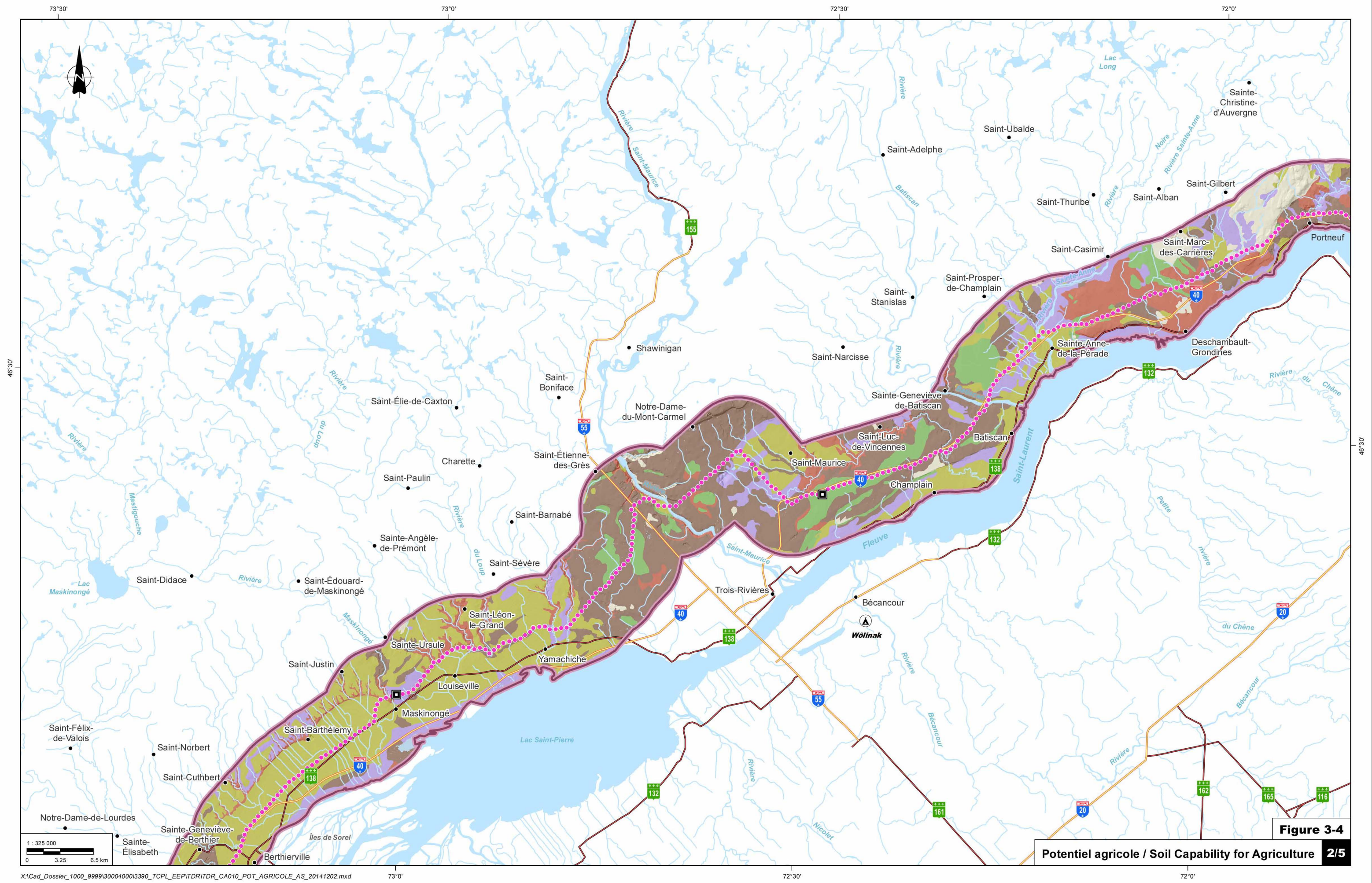


Figure 3-4

Potentiel agricole / Soil Capability for Agriculture 2/5

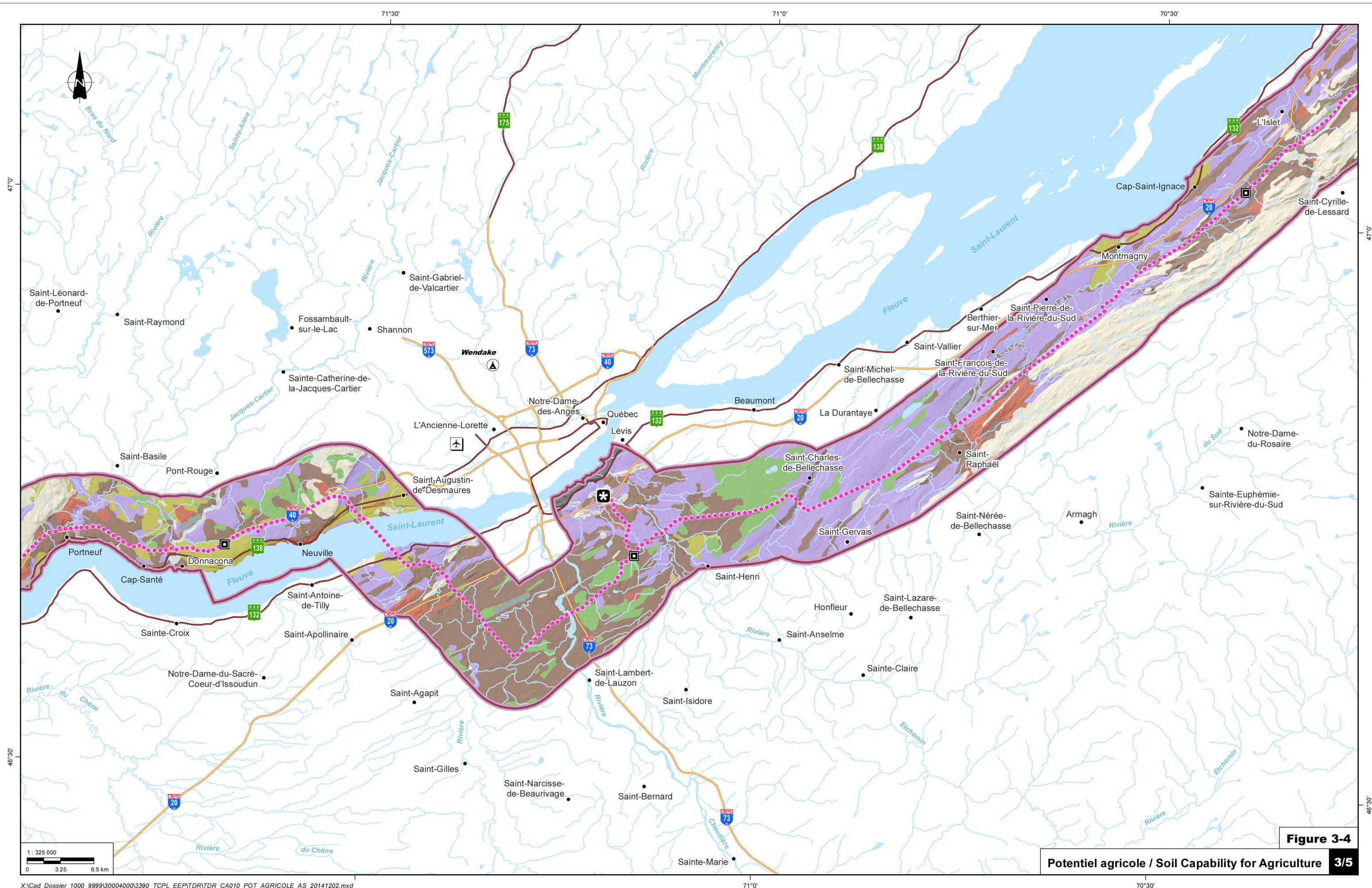


Figure 3-4

Potential agricole / Soil Capability for Agriculture 3/5

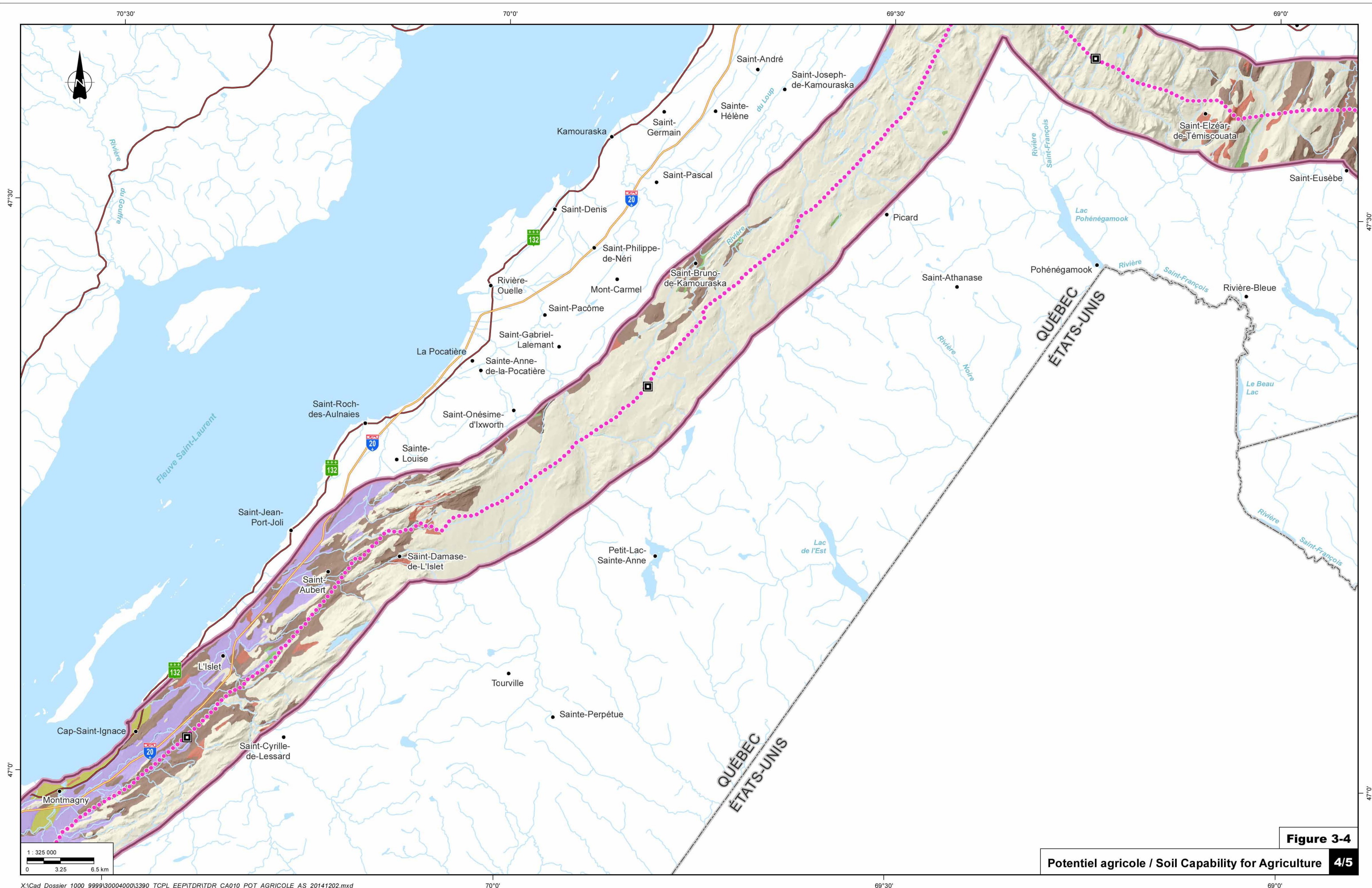


Figure 3-4

Potential agricole / Soil Capability for Agriculture **4/5**

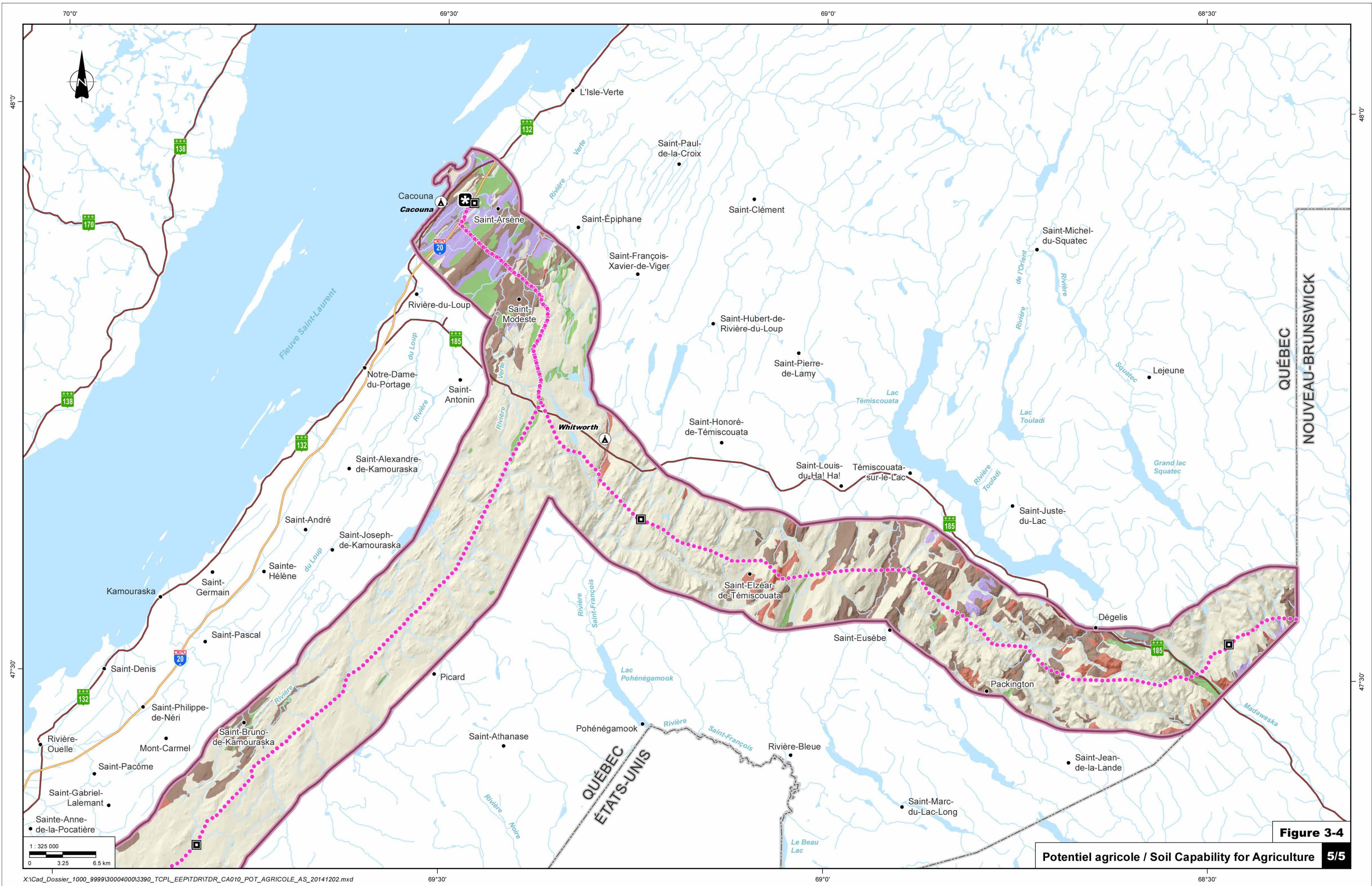


Figure 3-4

Potential agricole / Soil Capability for Agriculture 5/5