






COMPOSANTES DU PROJET / PROJECT COMPONENTS

- Zone d'étude étendue (ZÉE)  Extended study area (ESAR)
- Tracé  Route
- Point de livraison  Delivery point
- Station de pompage  Pump station

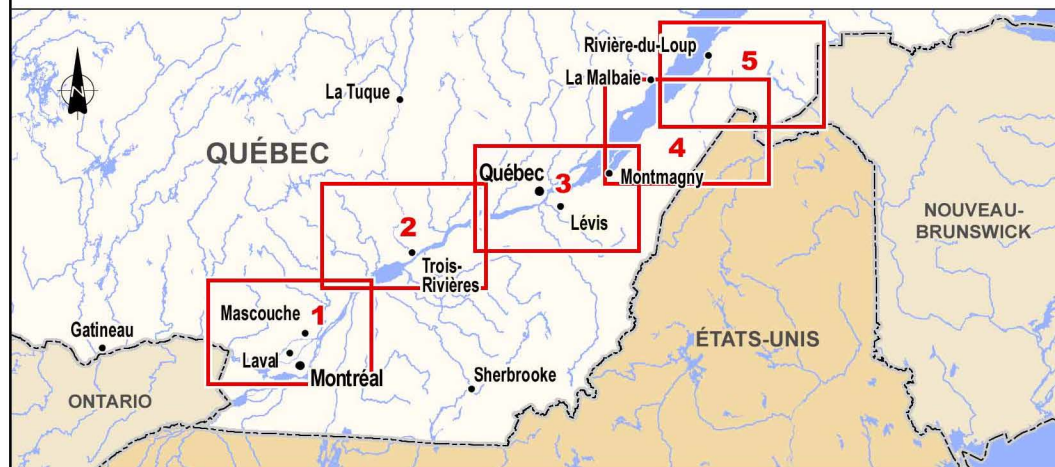
REPÈRES GÉOGRAPHIQUES / GEOGRAPHICAL LANDMARKS

- Frontière nationale  National boundary
- Autoroute  Highway
- Route nationale  National road
- Établissement amérindien  Indian reserve or settlement
- Aéroport international  International airport
- Municipalité  Municipality

PÉDOLOGIE / PEDOLOGY

- Sol issu de dépôts de tills  Till-derived soil
- Sol graveleux  Gravelly soil
- Sol sableux  Sandy soil
- Sol argileux  Clayey soil
- Sol loameux  Loamy soil
- Sol organique  Organic soil
- Sol divers  Other soil

324 **PR4.6.65**
 Projet Oléoduc Énergie Est de
 TransCanada – section québécoise
 6211-18-018



Plan de localisation / Location Map

SOURCES / REFERENCES

- RNCan (BNDT 250k, hydrographie) 2010.
- MRN (BDGA 1M, réseau routier) 2010.
- MRN (BDGA 1M, découpages administratifs) 2012.
- MRN (BDGA 1M, pôles d'occupation) 2010.
- RNCan (BNDT 50k et 250k, pôles d'occupation) 2010.
- MAPAQ et IRDA (20k, pédologie) 1998 à 2006.

OLÉODUC ÉNERGIE EST
ENERGY EAST PIPELINE

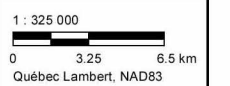


Figure 3-3

Pédologie
Pedology

Cartographie / Cartography:
 Chargé de projet / Project Manager:
 Date : 2014-12-02

Anne-Marie Marquis
 Claude Veilleux, ing. & agr.
 Dossier : 3390-141



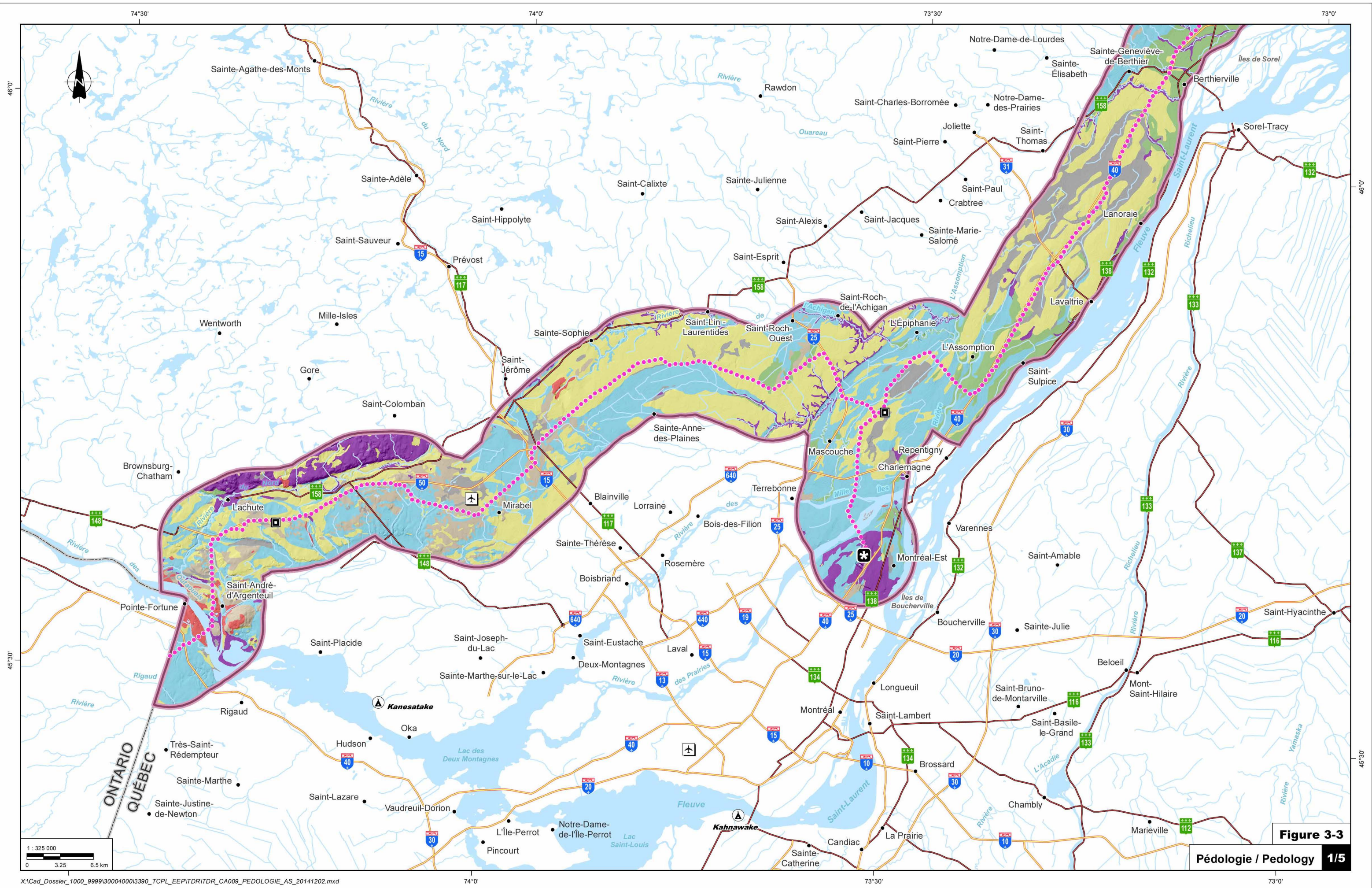


Figure 3-3

Pédologie / Pedology 1/5

1 : 325 000
0 3.25 6.5 km

X:\Cad_Dossier_1000_9999\30004000\3390_TCPL_EEP\TDR\DR_CA009_PEDOLOGIE_AS_20141202.mxd

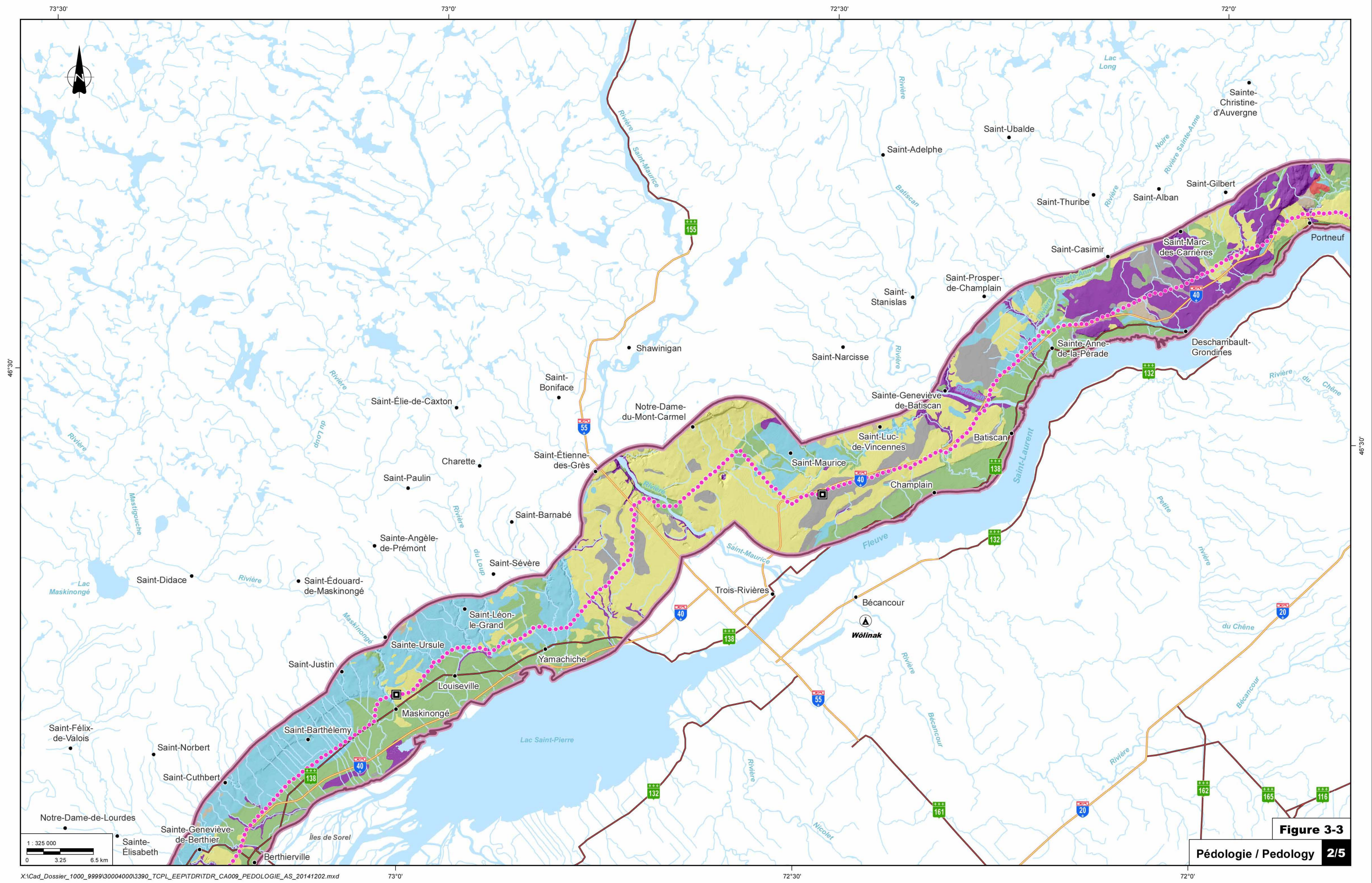


Figure 3-3

Pédologie / Pedology 2/5

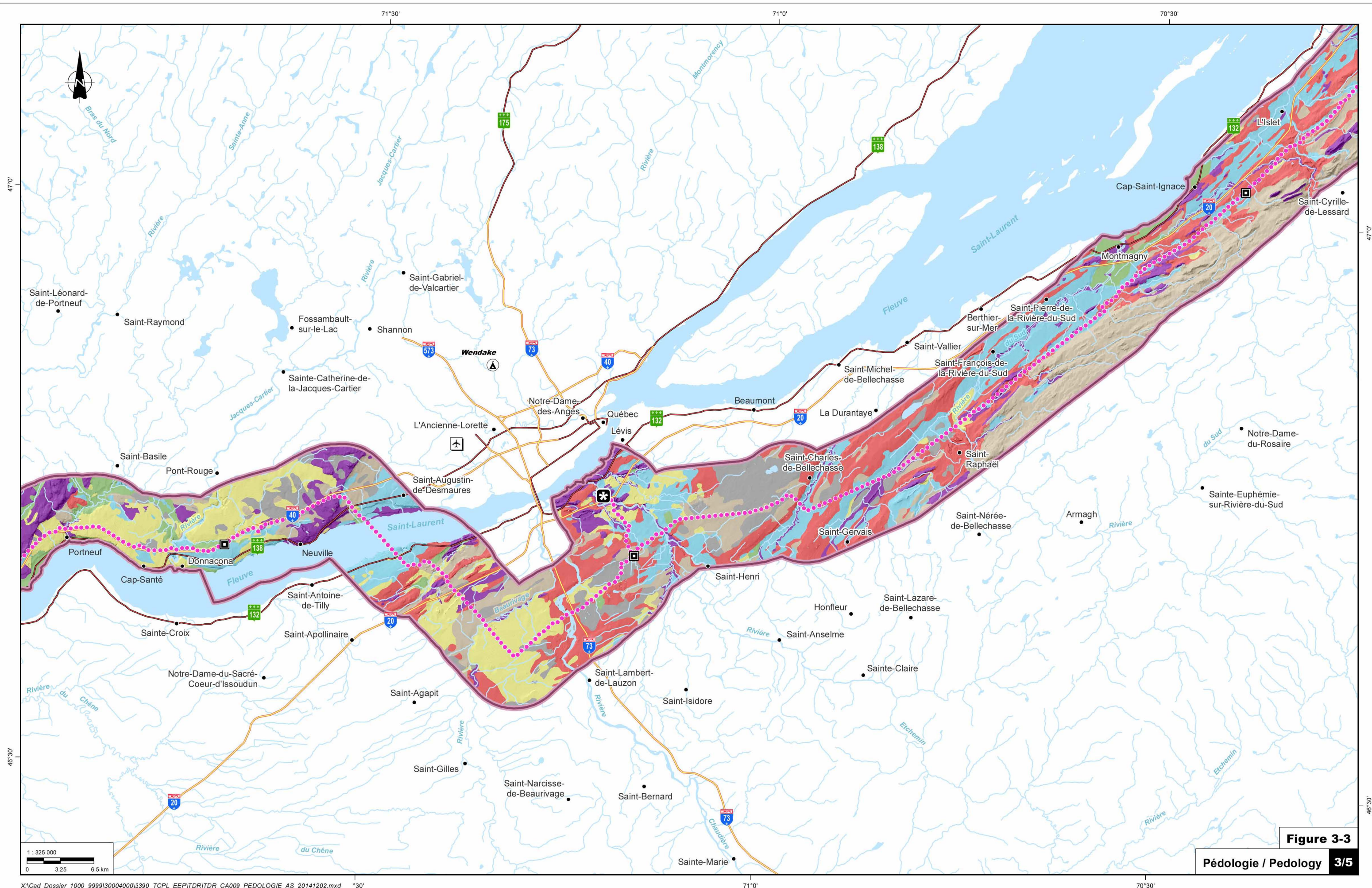


Figure 3-3

Pédologie / Pedology 3/5

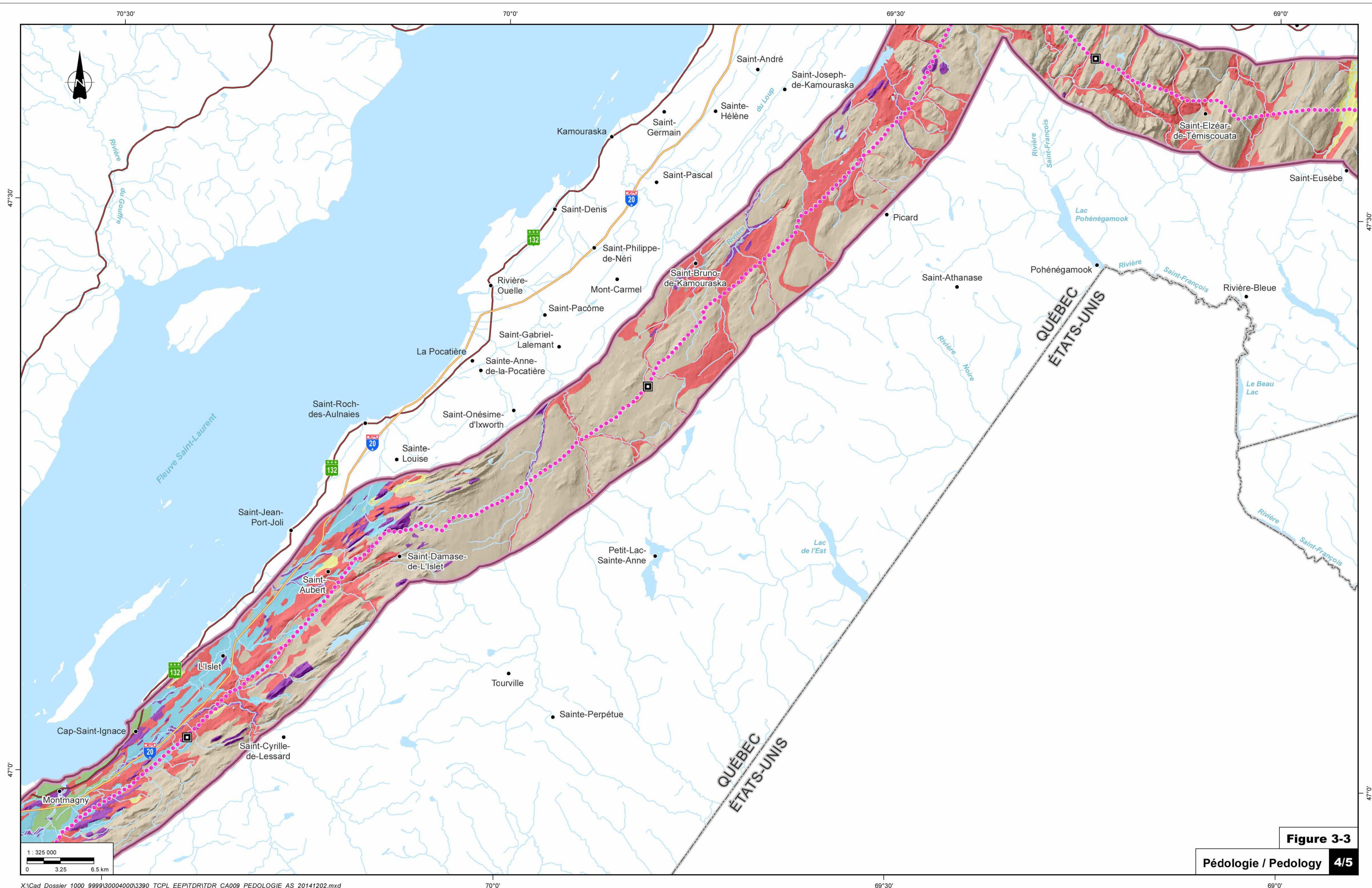


Figure 3-3

Pédologie / Pedology 4/5

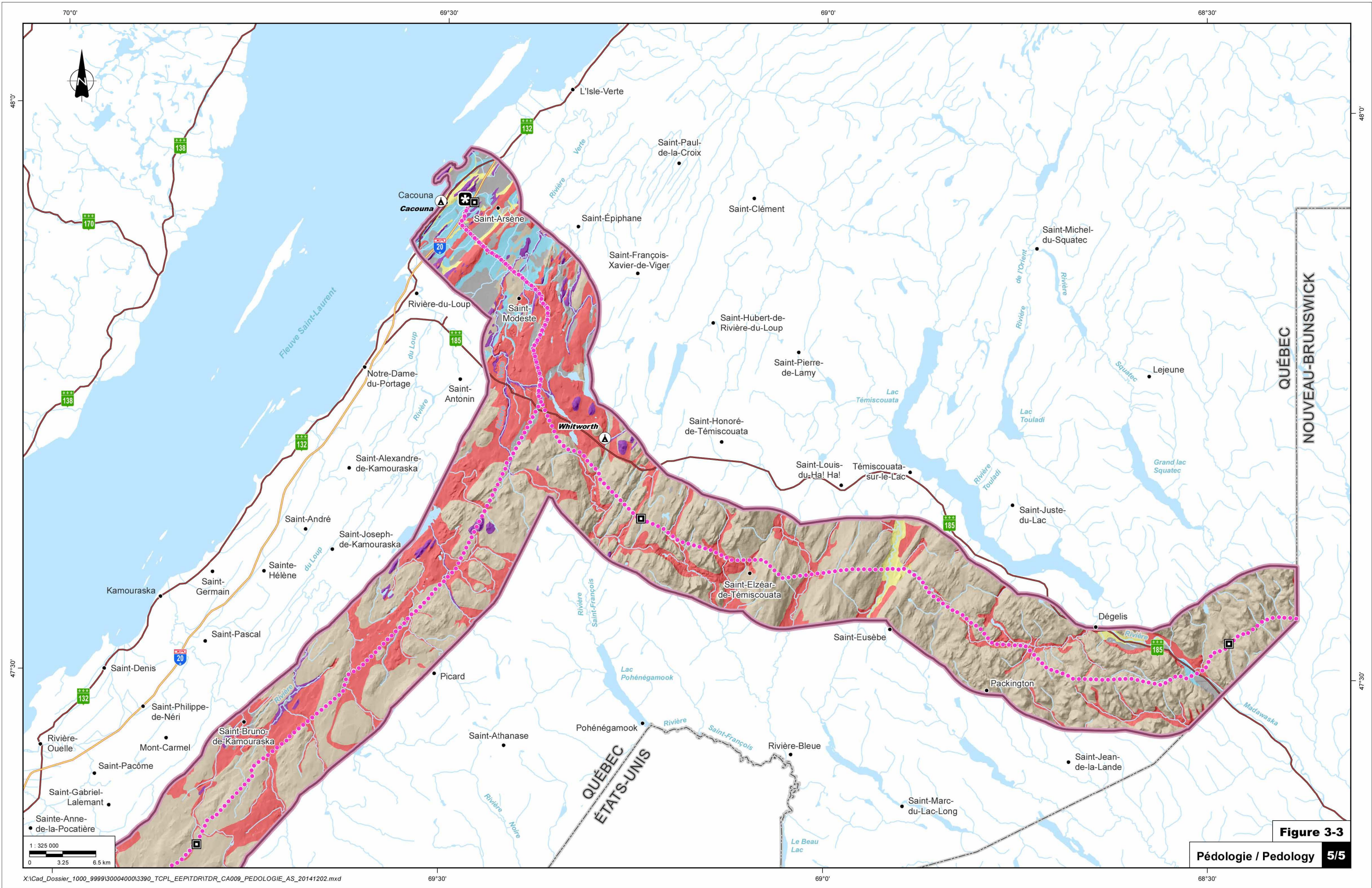


Figure 3-3

Pédologie / Pedology 5/5