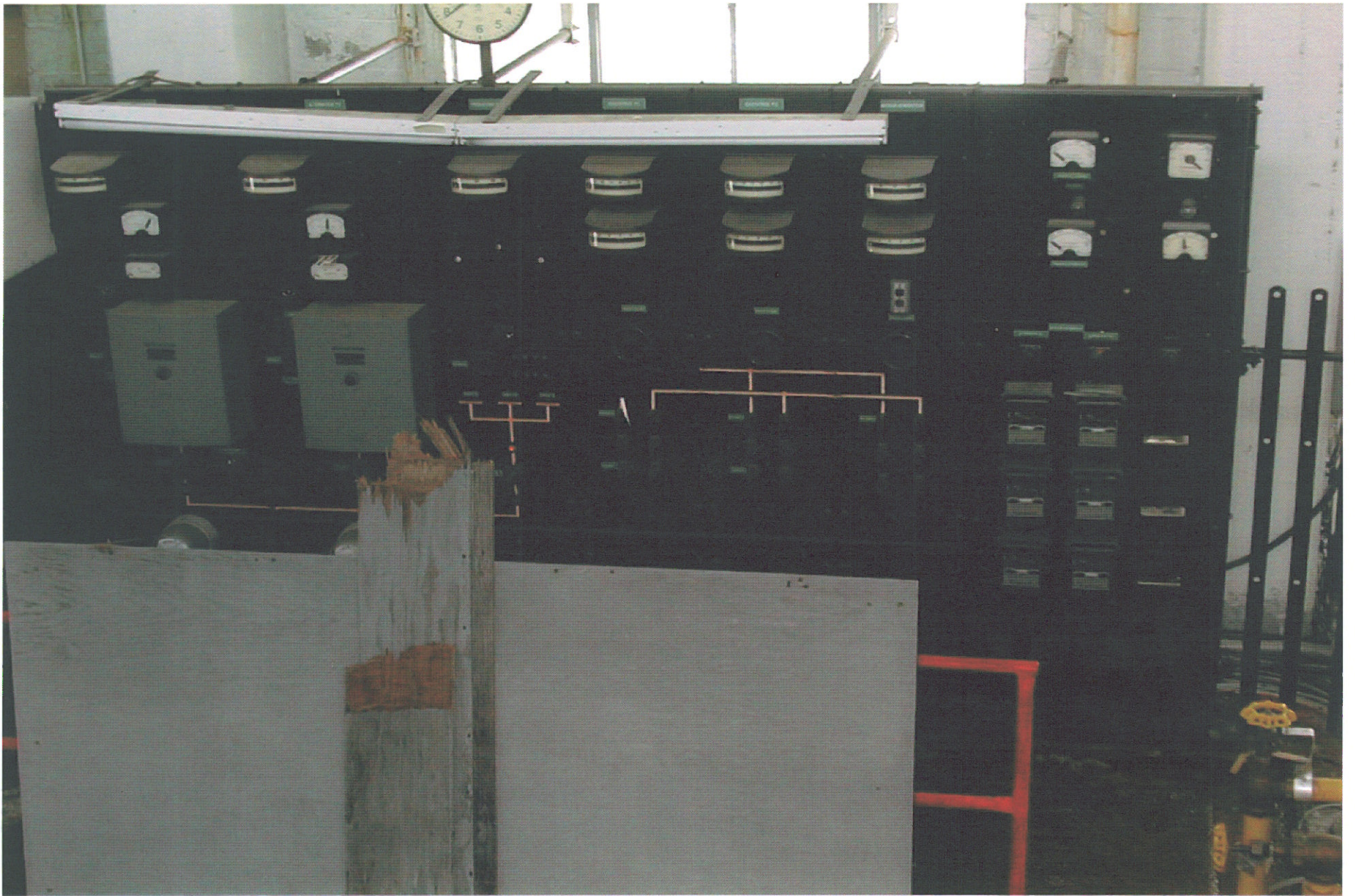


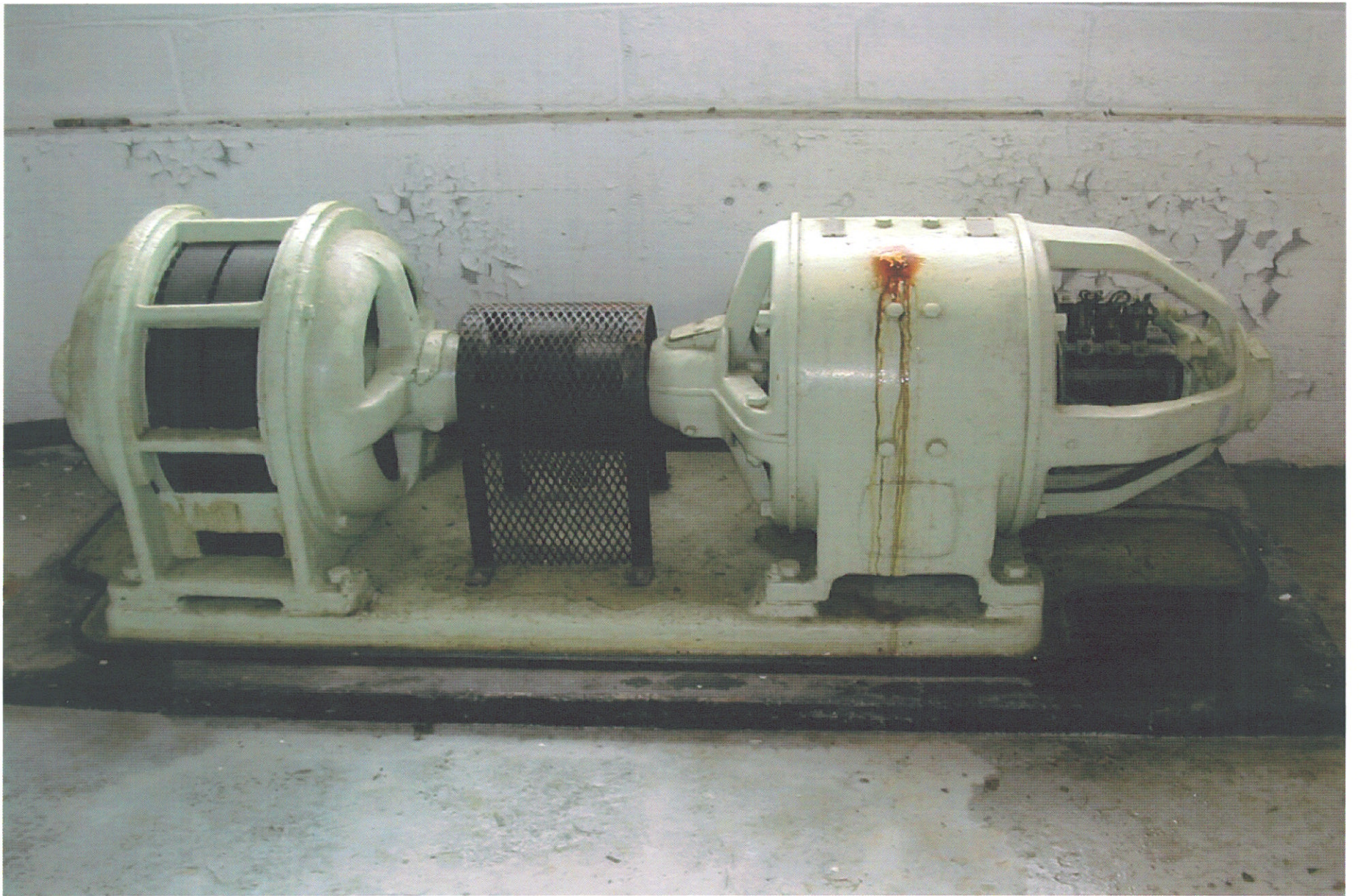
## **ANNEXE 1**

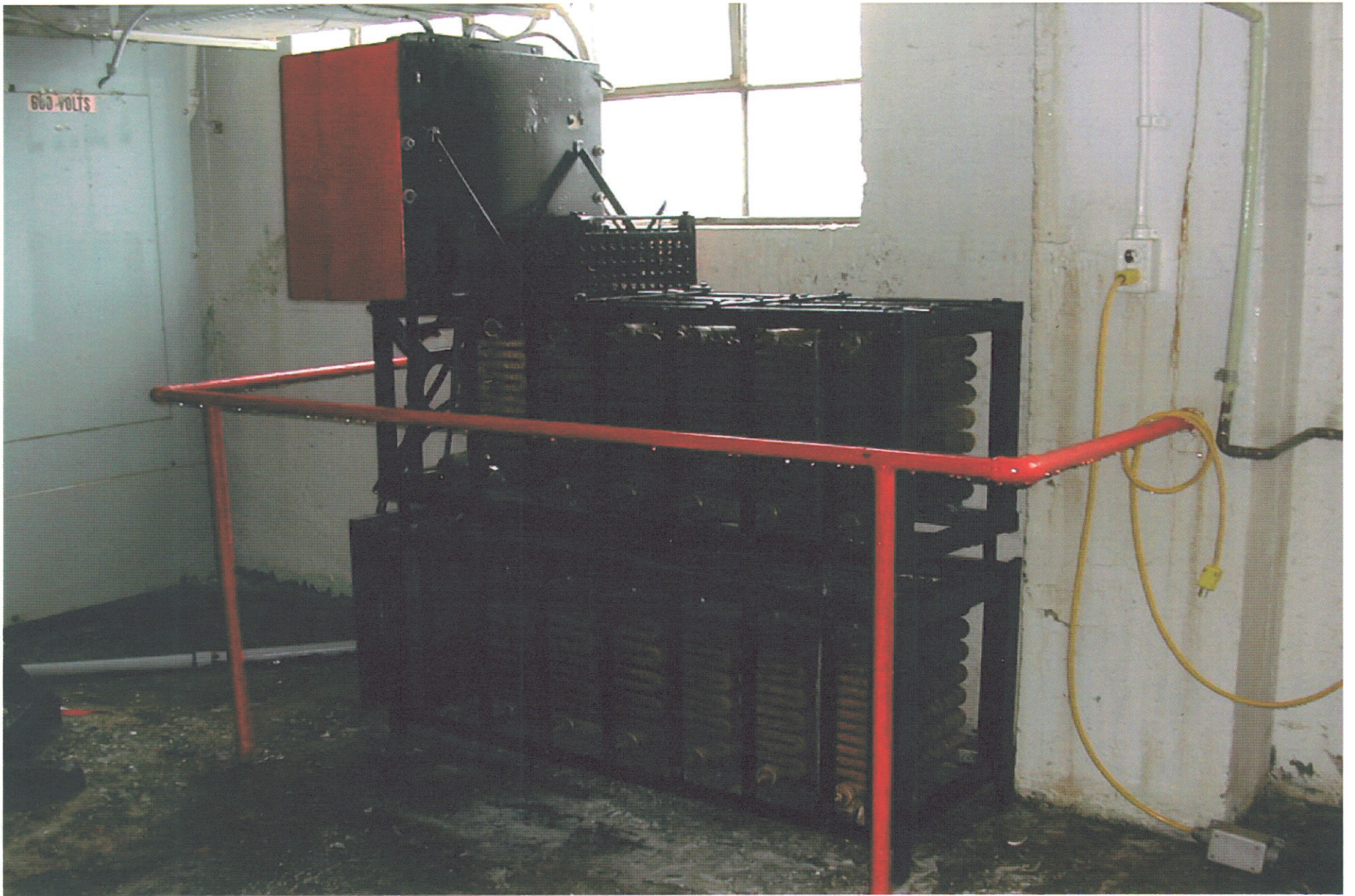
Photographies des équipements de la centrale Magpie











ALTERNATING CURRENT GENERATOR

NO 27679 ENG. NOTICE  
TYPE ATB CLASS 50-1125-1441 FORM 1  
K.V.A. 1125 VOLTS 600 CYCLES  
PHASES 1 AMPERES 1083 R.P.M. 144

PATENTED 1893-1894

CANADIAN  
GENERAL ELECTRIC CO.

LIMITED

TORONTO - PETERBORO

NP10075

MONTREAL ARMATURE WORKS  
LIMITED



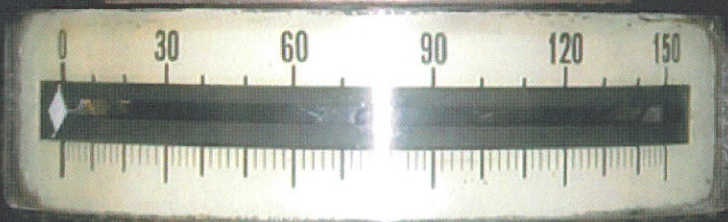
MONTREAL, CANADA  
K.W. 1125 VOLTS 600 R.P.M. 144  
AMPS 1083 CYCLES 50 PHASE 1  
SERIAL NO. 27679

DIRECT CURRENT AMMETER



CANADIAN GENERAL ELECTRIC CO. LIMITED  
TORONTO, ONTARIO, CANADA

DIRECT CURRENT VOLTMETER



CANADIAN GENERAL ELECTRIC CO. LIMITED  
TORONTO, ONTARIO, CANADA



