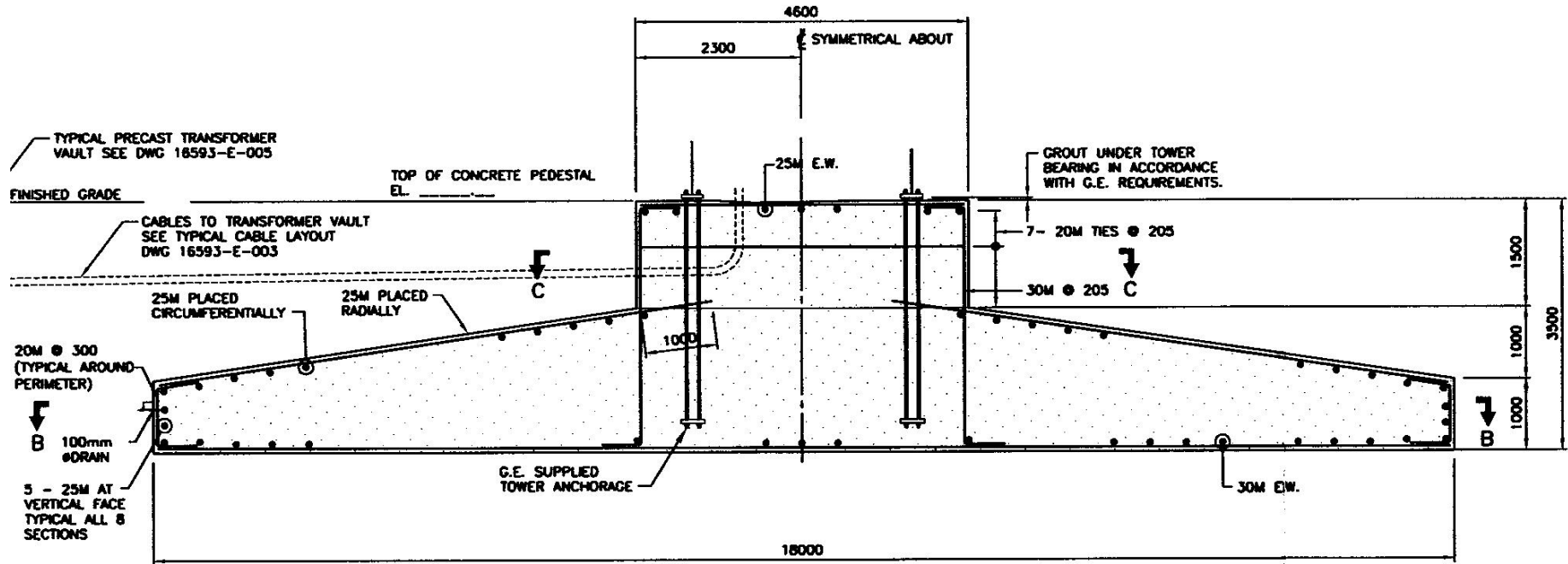
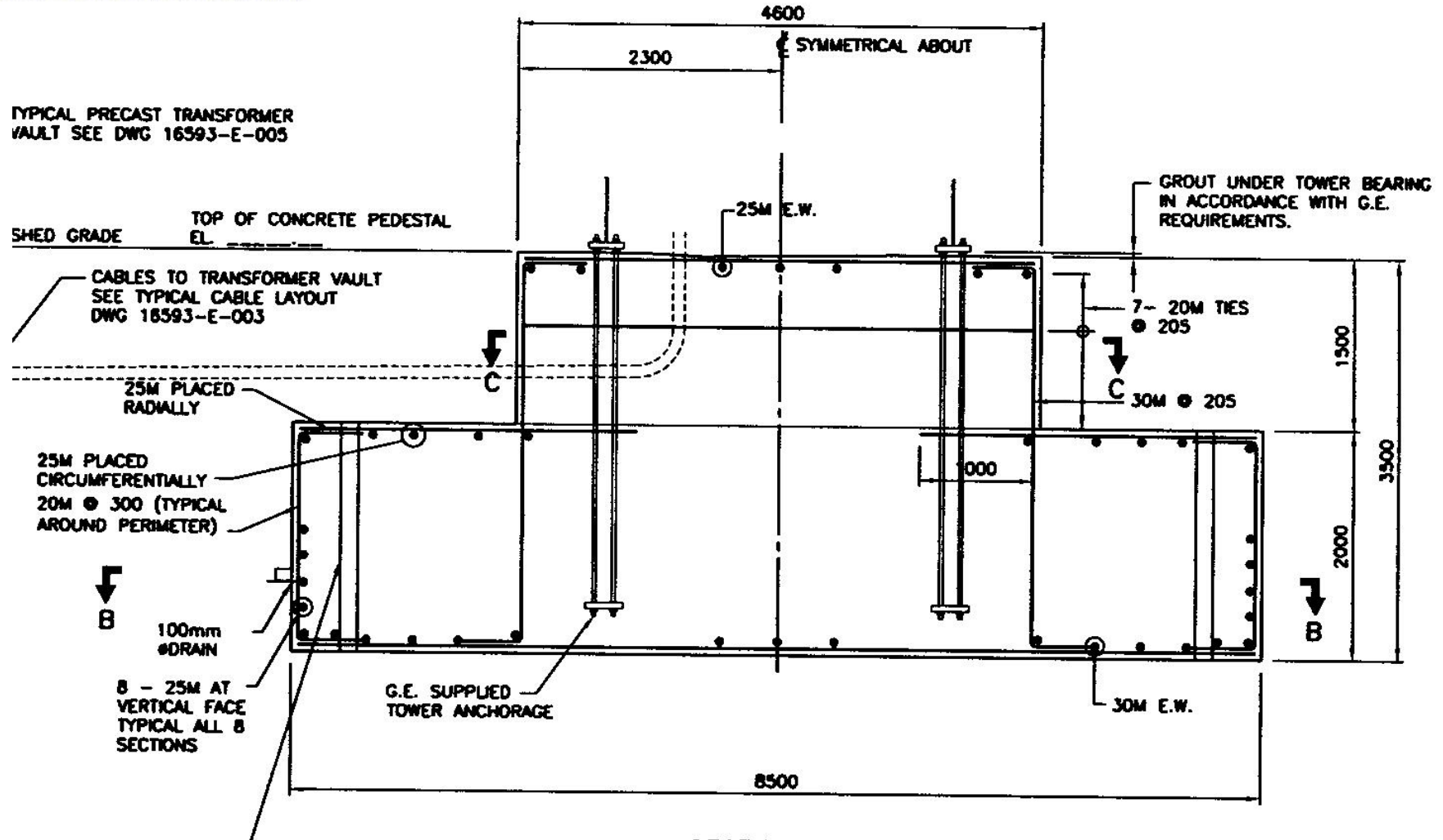


# Les Ressources Terravents Inc.

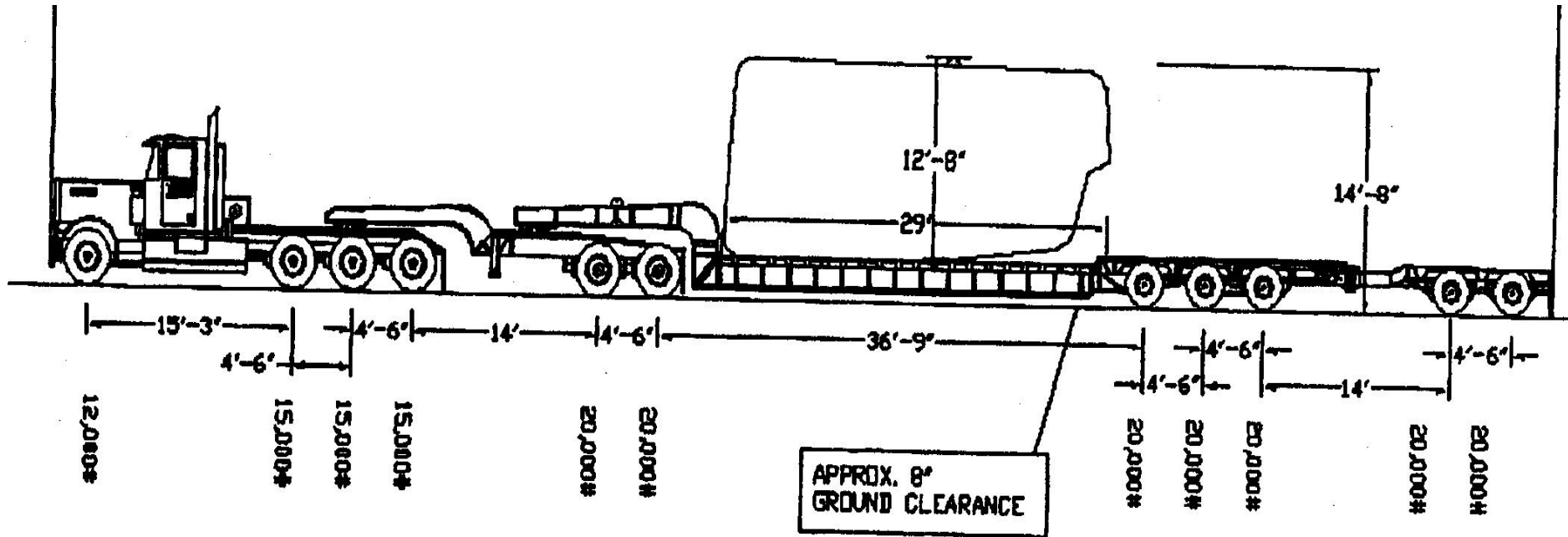
Une Filiale de SkyPower Wind Energy Fund LP





**Les Ressources**  
**Terravents Inc.**

Une Filiale de SkyPower Wind Energy Fund LP



197,000# GROSS WEIGHT  
 112'10" OVERALL LENGTH  
 11'6" WIDE  
 14'8" HIGH

NOTE: TIRE PRESSURE  
 8100 - 110 LBS. TYPICAL

# Les Ressources Terravents Inc.

Une Filiale de SkyPower Wind Energy Fund LP

