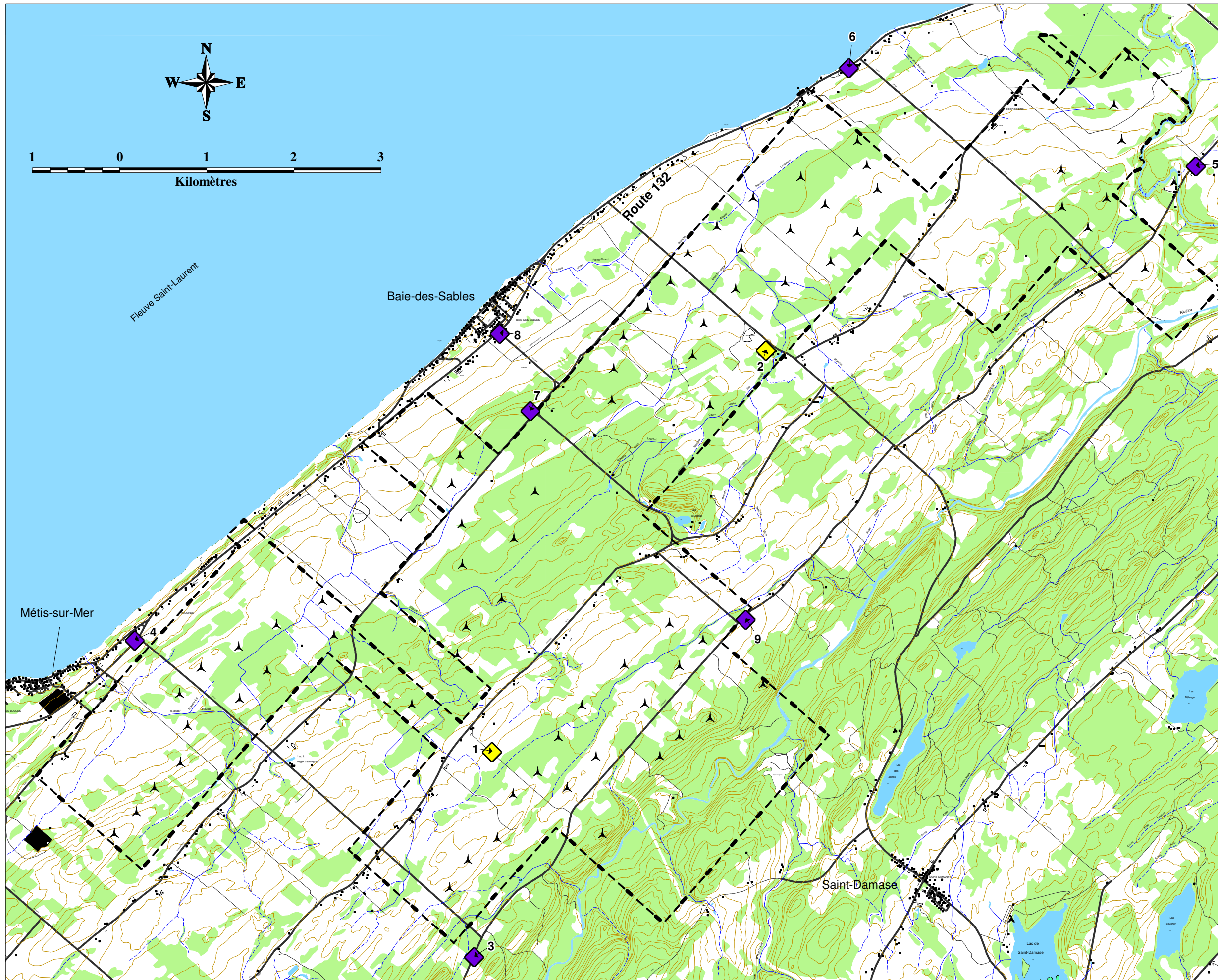

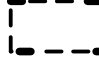









Carte 2.17
Stations de mesure de bruit



LÉGENDE

-  Éolienne
-  Domaine du projet éolien
-  Hydrographie
-  Routes principales
-  Routes secondaires
-  Courbe de niveau (intervalle: 10 mètres)
-  Bâtiments
- Station de mesure de bruit**
-  Station 24 heures
-  Station 1 heure

Baie-des-Sables
15 oct. 2004
Fait par:
Mélanie Falardeau
Véifié par:
Patrick Henn