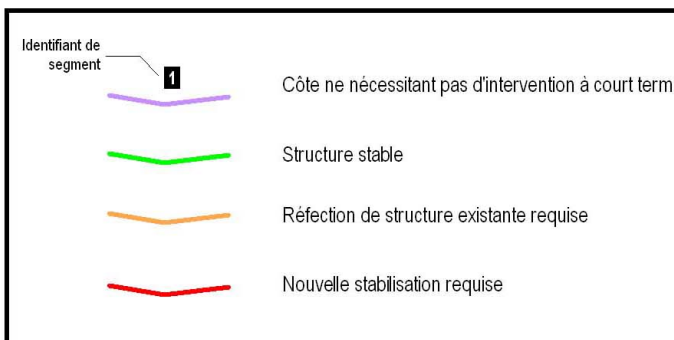
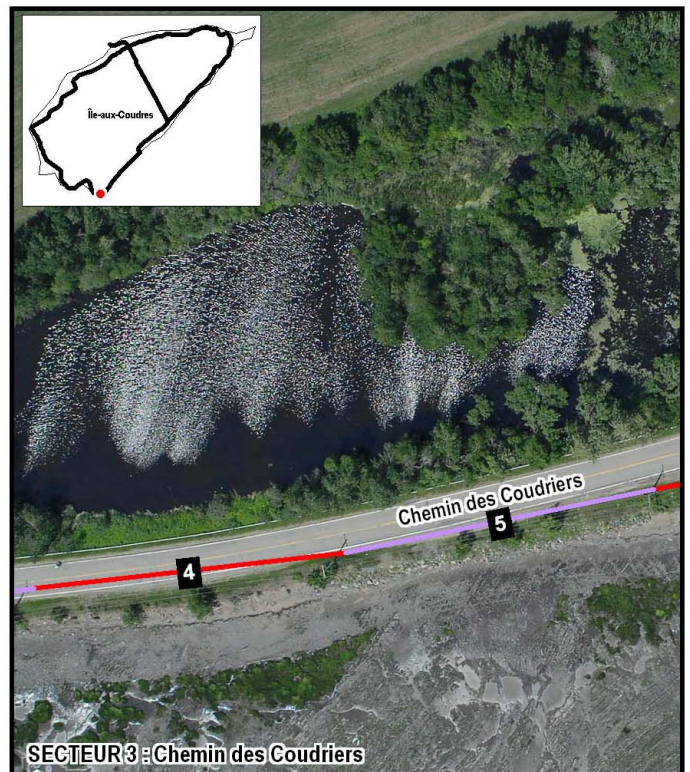
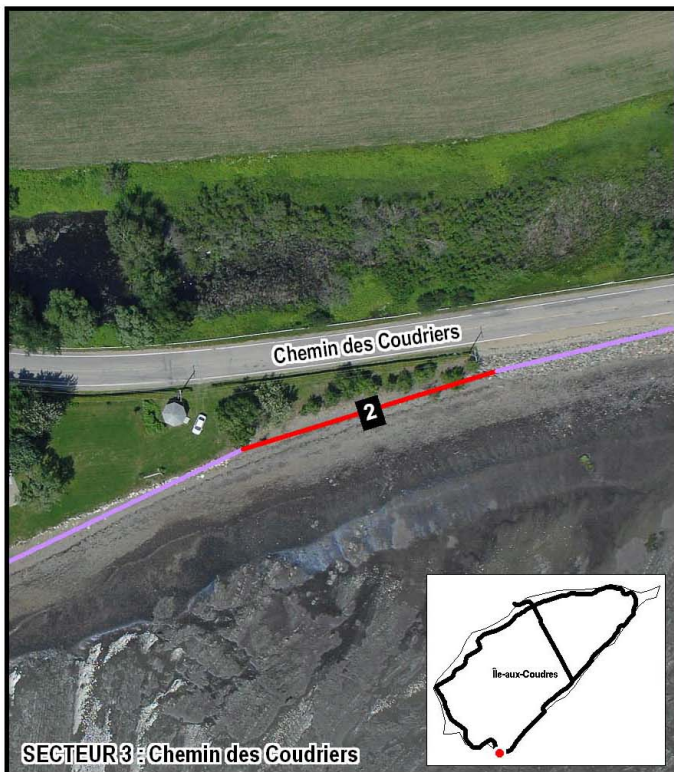
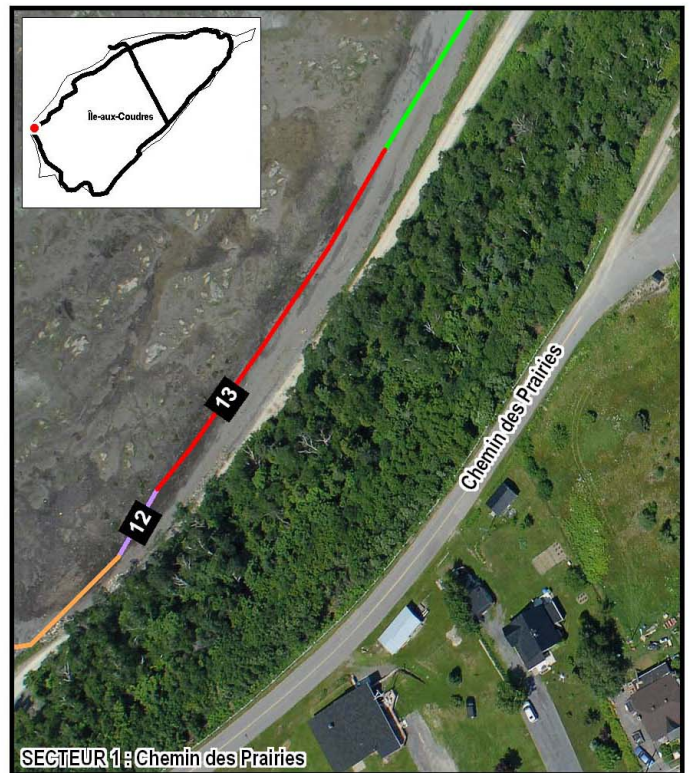
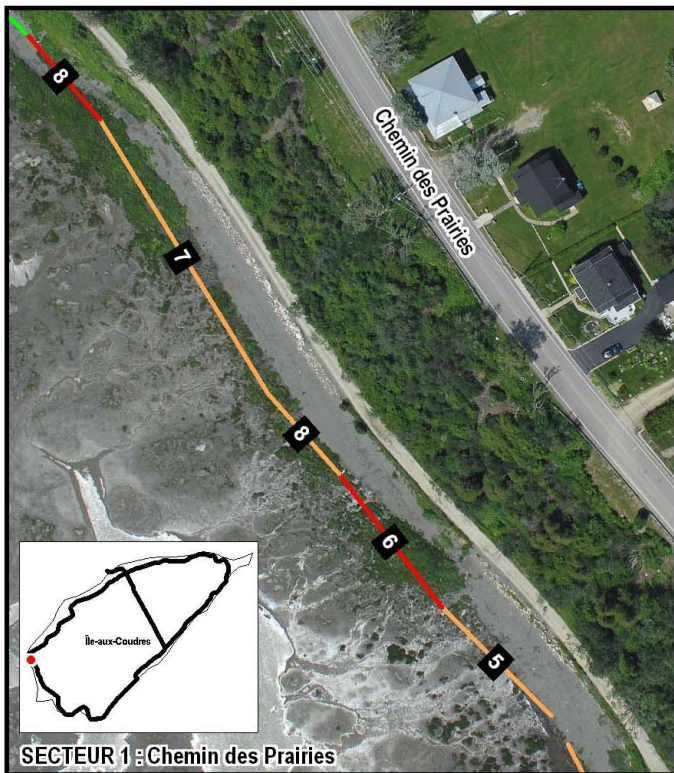


## **Annexe 3**

---

### **Document photographique (images Xeos)**





### ANNEXE 3.1 État de la côte et segments de côte nécessitant des travaux de stabilisation



Décembre 2010

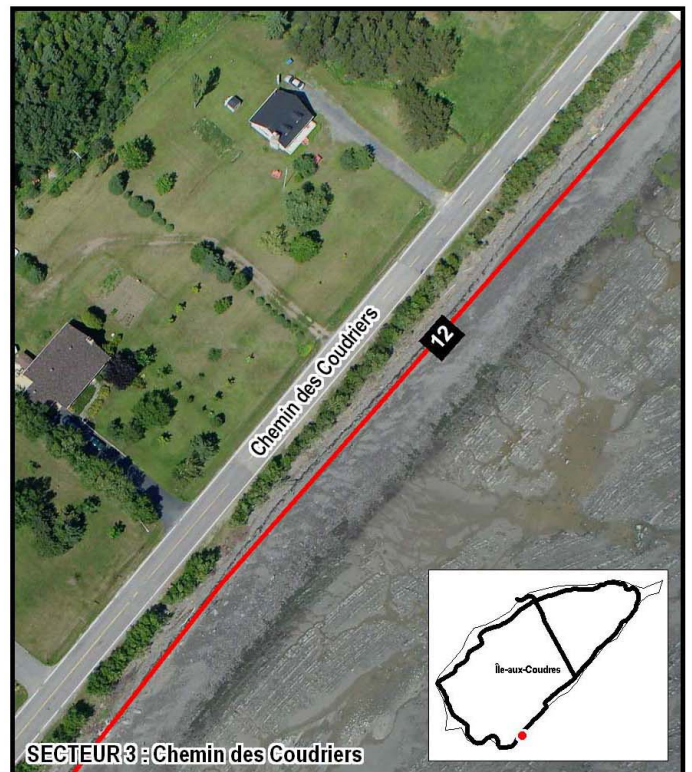
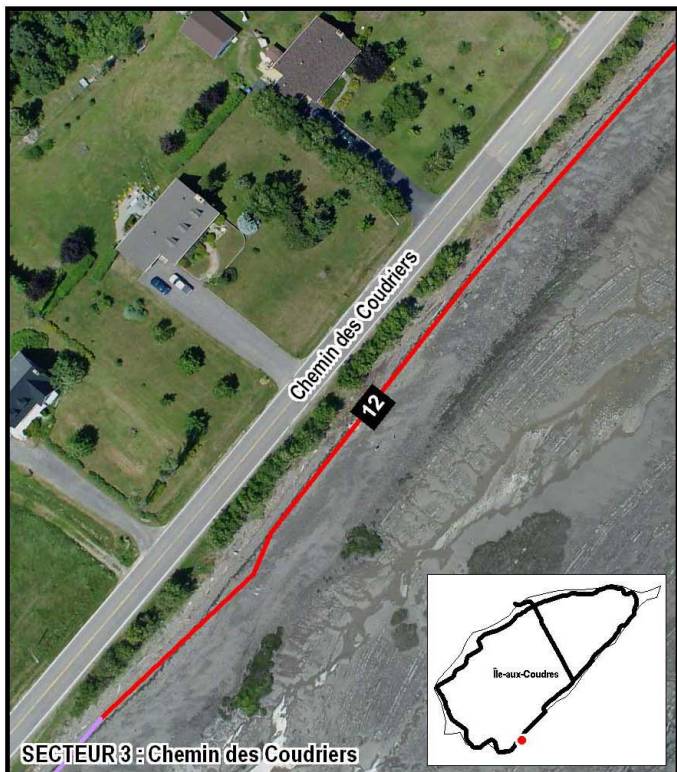
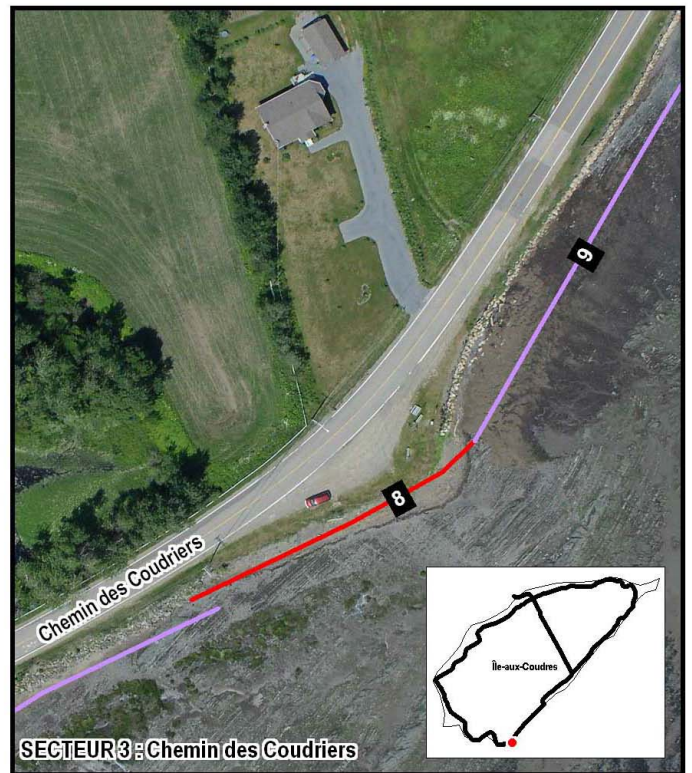
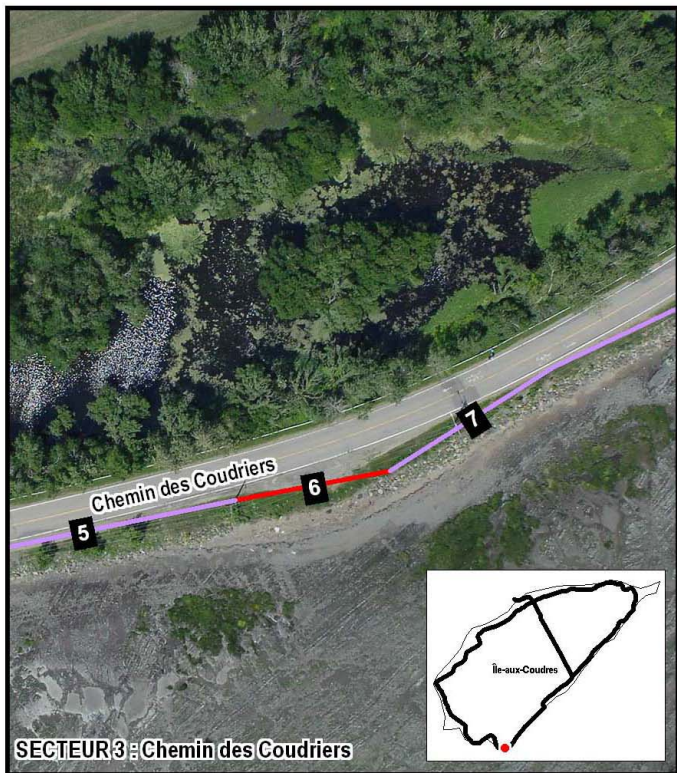
Source des photos : XEOS, 2008  
Fichier : 57146\_A3\_XEOS\_101215.WOR







MTM, fuseau 7 (NAD83)







- Identifiant de segment
-  Côte ne nécessitant pas d'intervention à court terme
  -  Structure stable
  -  Réfection de structure existante requise
  -  Nouvelle stabilisation requise

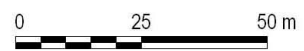
### ANNEXE 3.2

#### État de la côte et segments de côte nécessitant des travaux de stabilisation



Décembre 2010

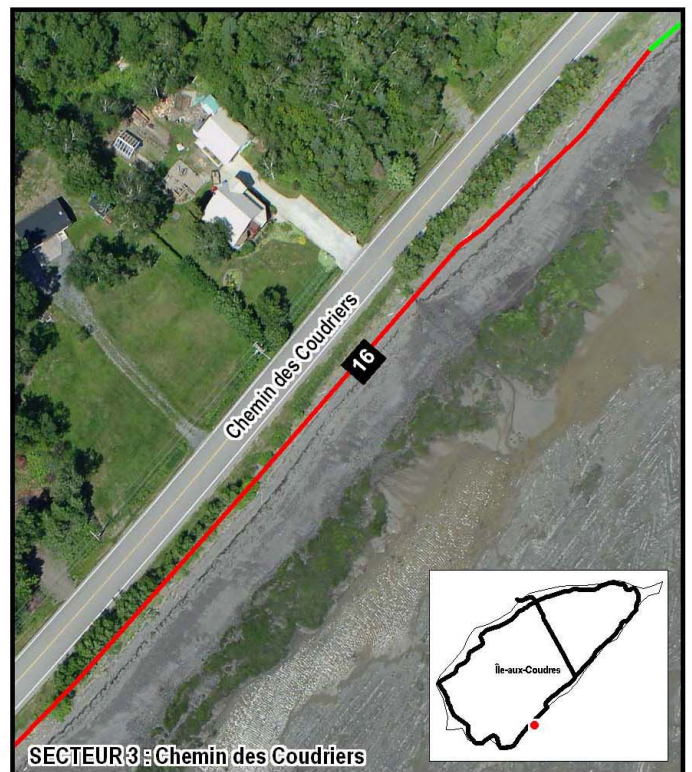
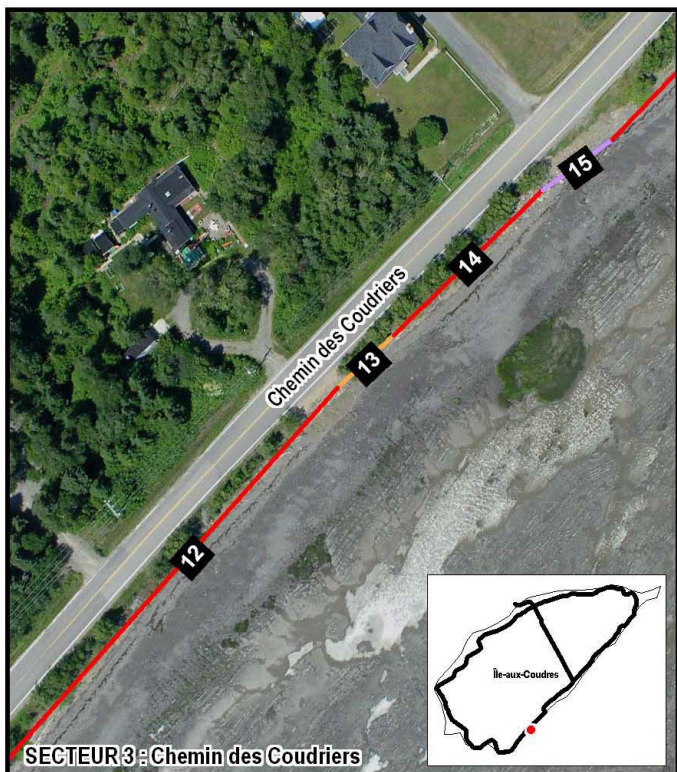
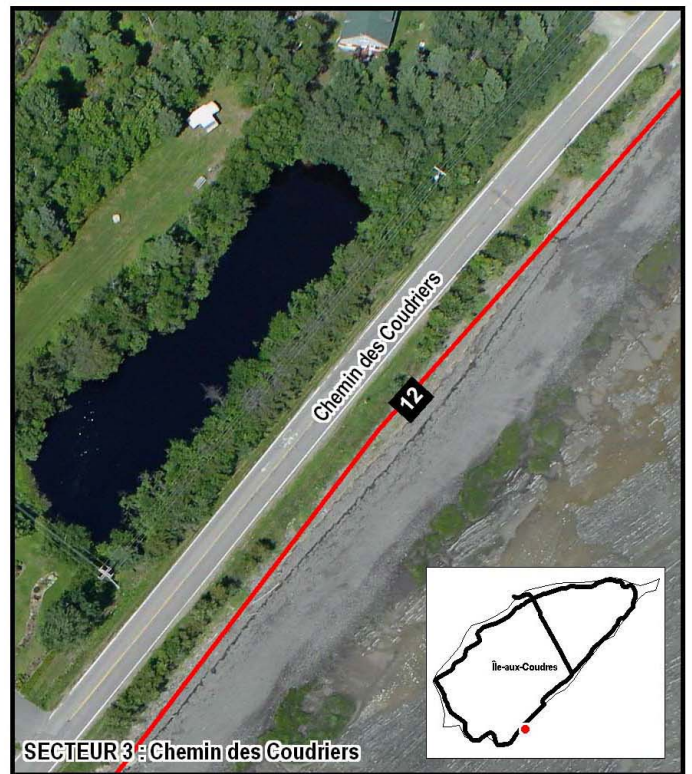
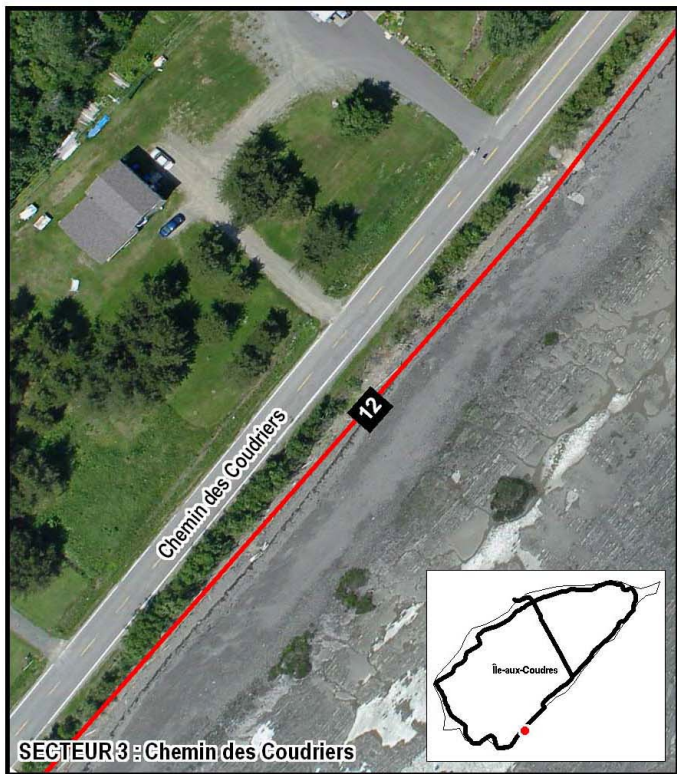
Source des photos : XEOS, 2008  
Fichier : 57146\_A3 XEOS\_101215.WOR



MTM, fuseau 7 (NAD83)







Identifiant de segment



Côte ne nécessitant pas d'intervention à court terme



Structure stable



Réfection de structure existante requise



Nouvelle stabilisation requise

### ANNEXE 3.3

#### État de la côte et segments de côte nécessitant des travaux de stabilisation



Décembre 2010

Source des photos : XEOS, 2008

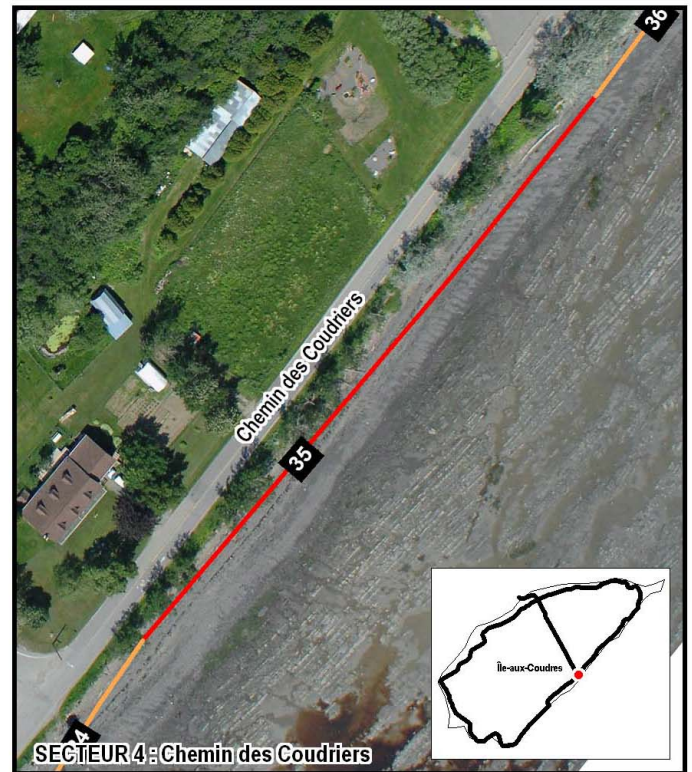
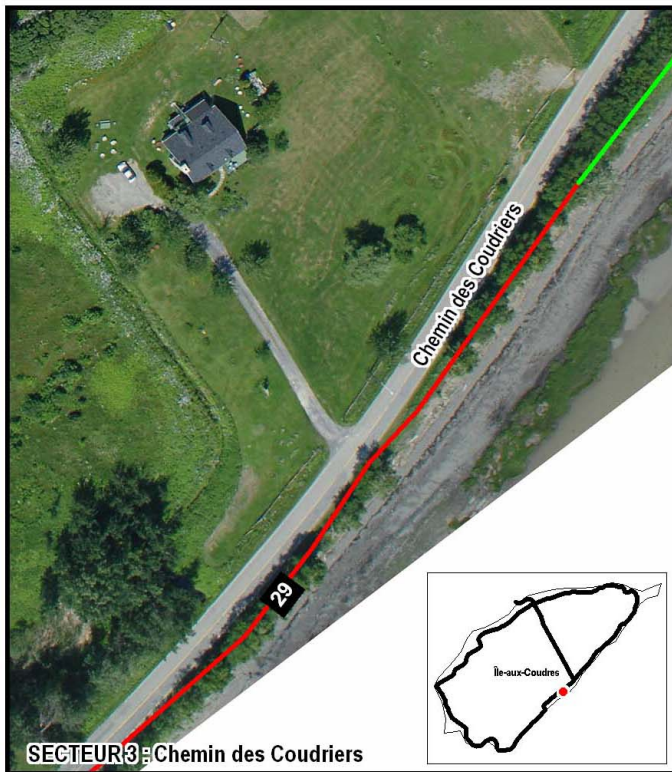
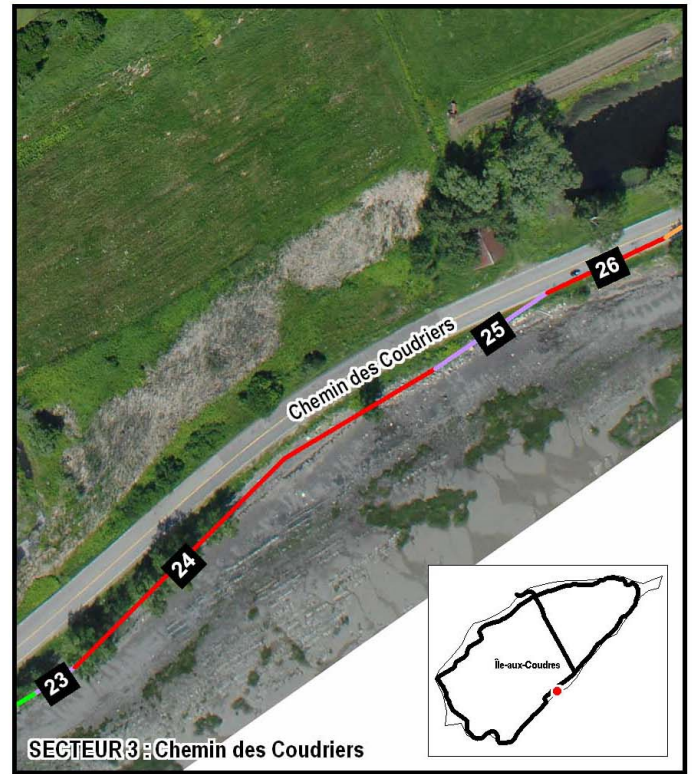
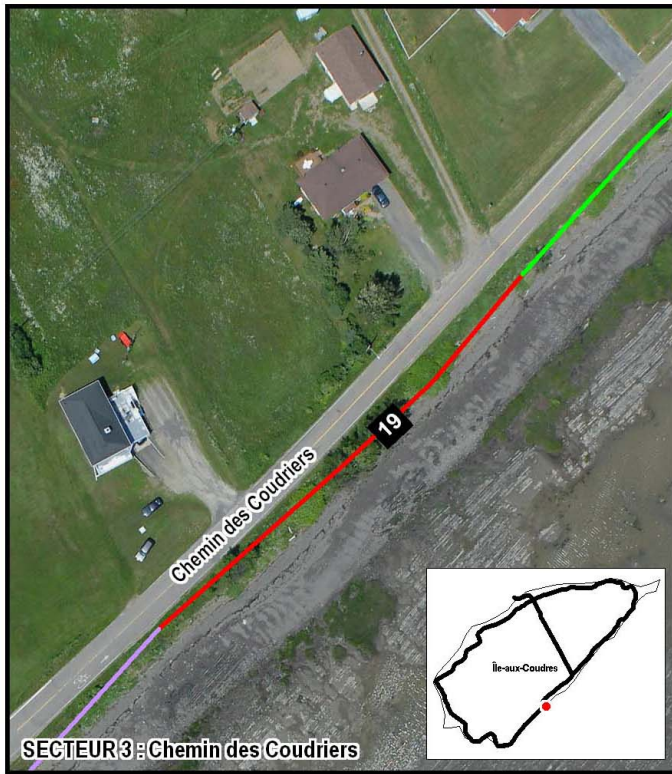
Fichier : 57146\_A3 XEOS\_101215.WOR

0 25 50 m

MTM, fuseau 7 (NAD83)

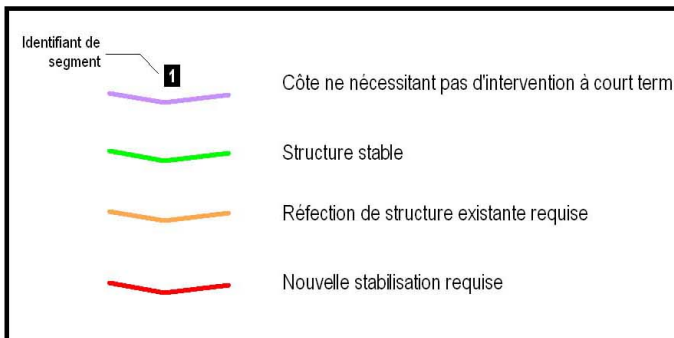
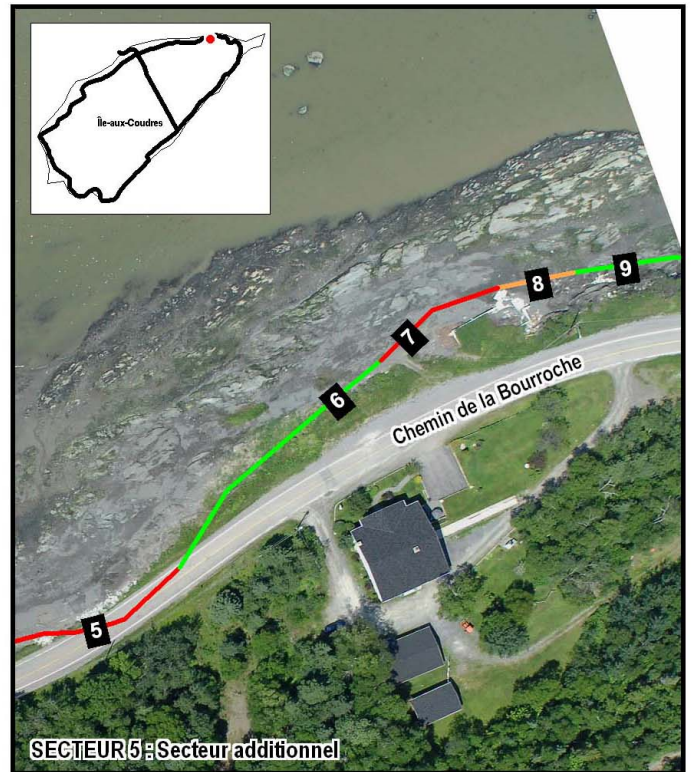
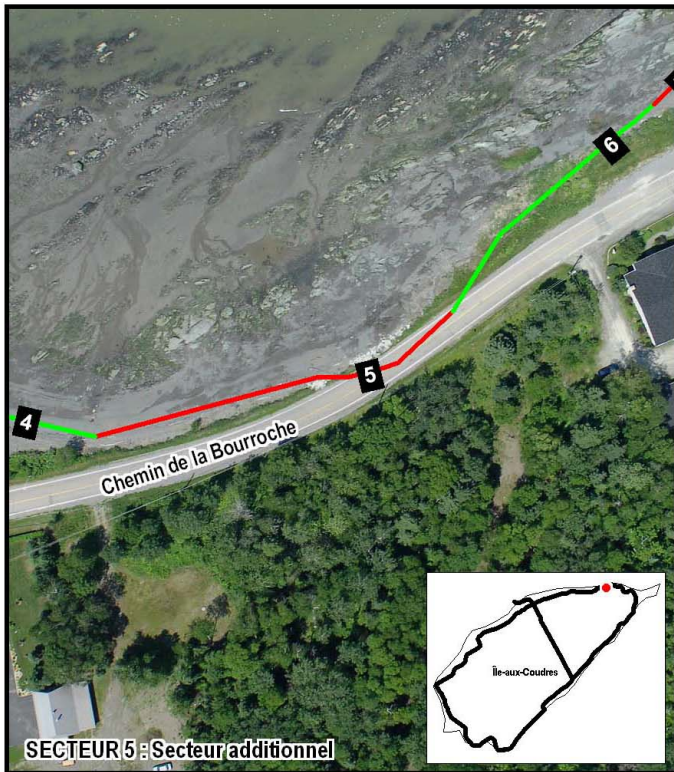
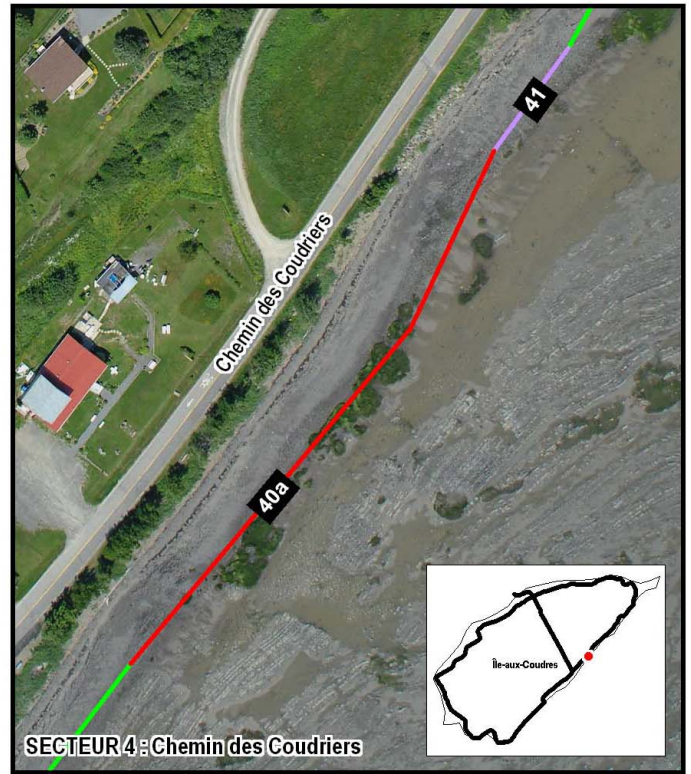
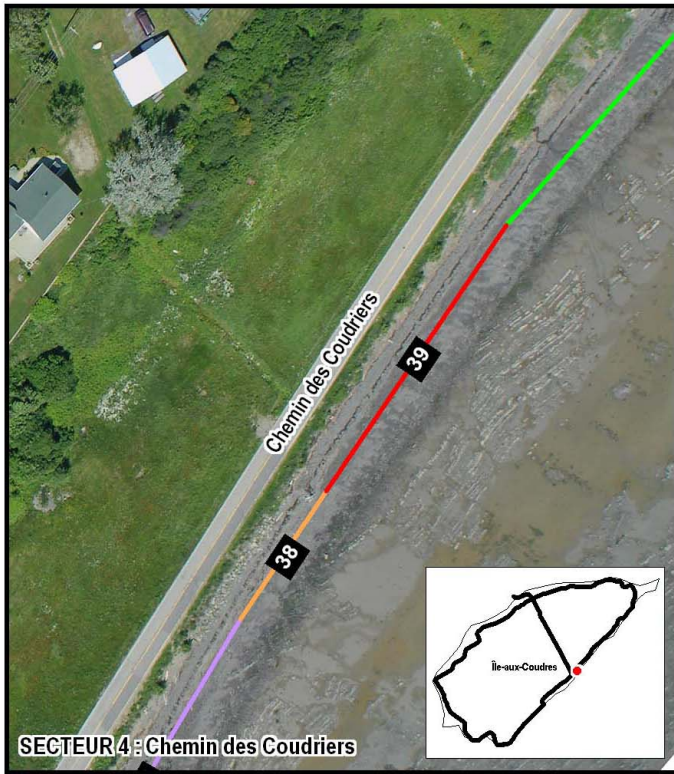






<p>Identifiant de segment</p> <p><b>1</b></p>    	<p>Côte ne nécessitant pas d'intervention à court terme</p> <p>Structure stable</p> <p>Réfection de structure existante requise</p> <p>Nouvelle stabilisation requise</p>	<h3>ANNEXE 3.4</h3> <h4>État de la côte et segments de côte nécessitant des travaux de stabilisation</h4>  <p>Décembre 2010</p> <p>Source des photos : XEOS, 2008</p> <p>Fichier : 57146_A3 XEOS_101215.WOR</p> <p>0 25 50 m</p> <p>MTM, fuseau 7 (NAD83)</p> 
---	---	--



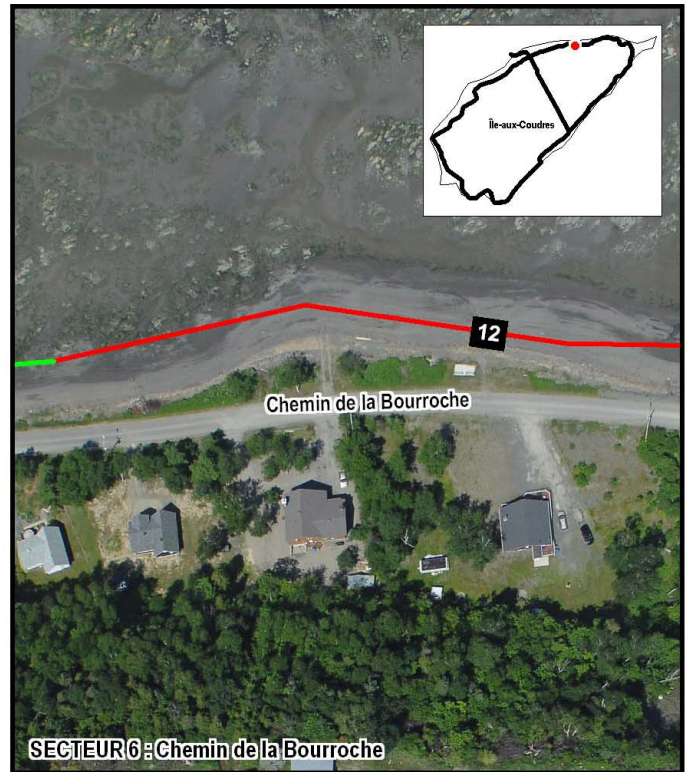
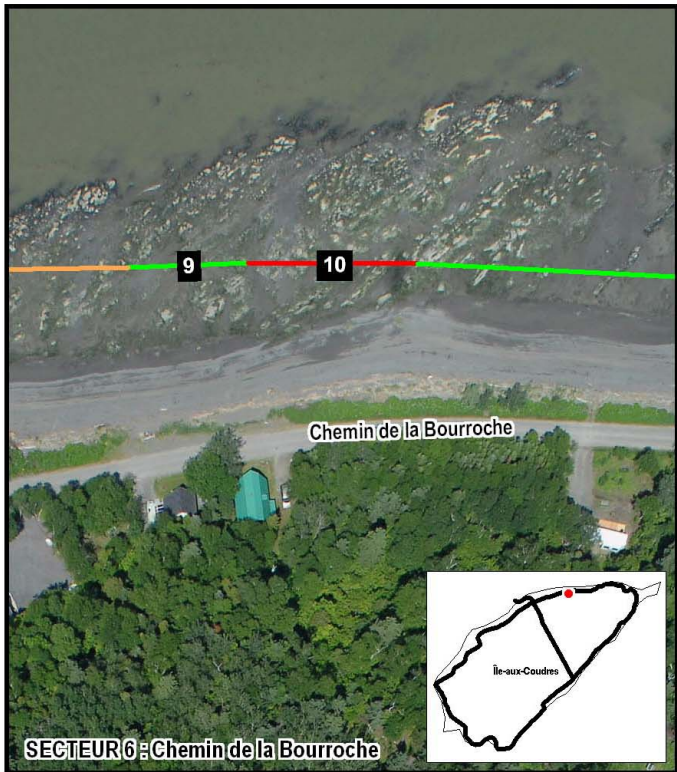
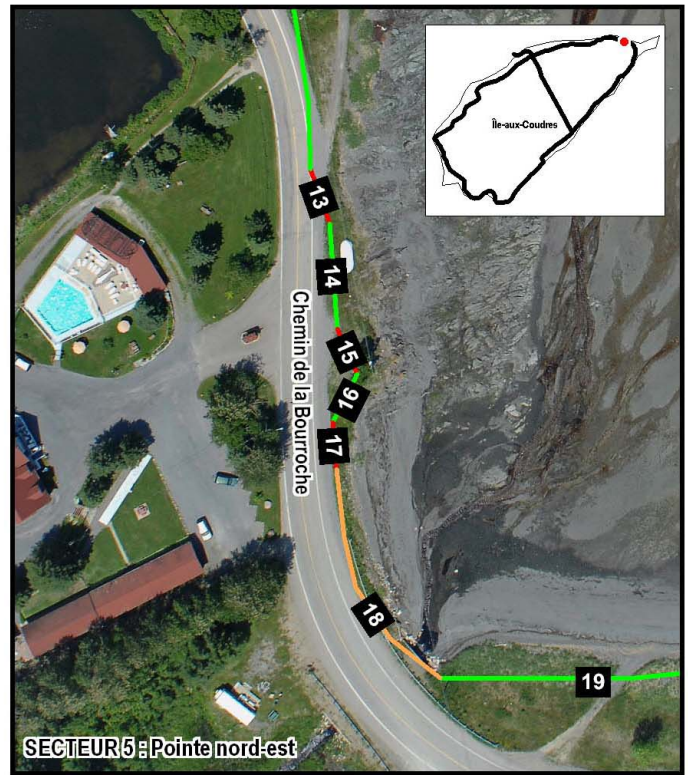
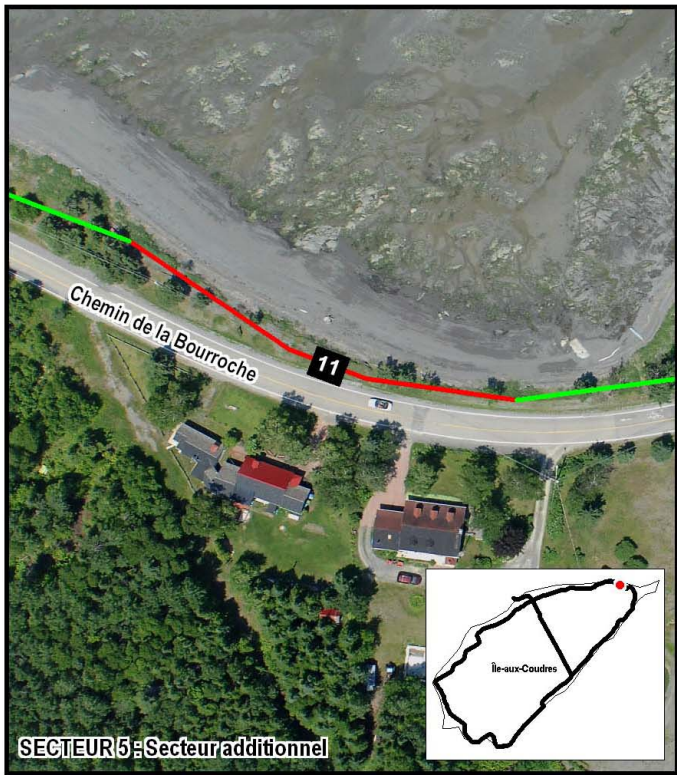


**ANNEXE 3.5**  
**État de la côte et segments de côte**  
**nécessitant des travaux de stabilisation**

Décembre 2010  
 Source des photos : XEOS, 2008  
 Fichier : 57146\_A3\_XEOS\_101215.WOR

0      25      50 m  
 MTM, fuseau 7 (NAD83)





Identifiant de segment	Description
1	Côte ne nécessitant pas d'intervention à court terme
	Structure stable
	Réfection de structure existante requise
	Nouvelle stabilisation requise

**ANNEXE 3.6**  
**État de la côte et segments de côte**  
**nécessitant des travaux de stabilisation**

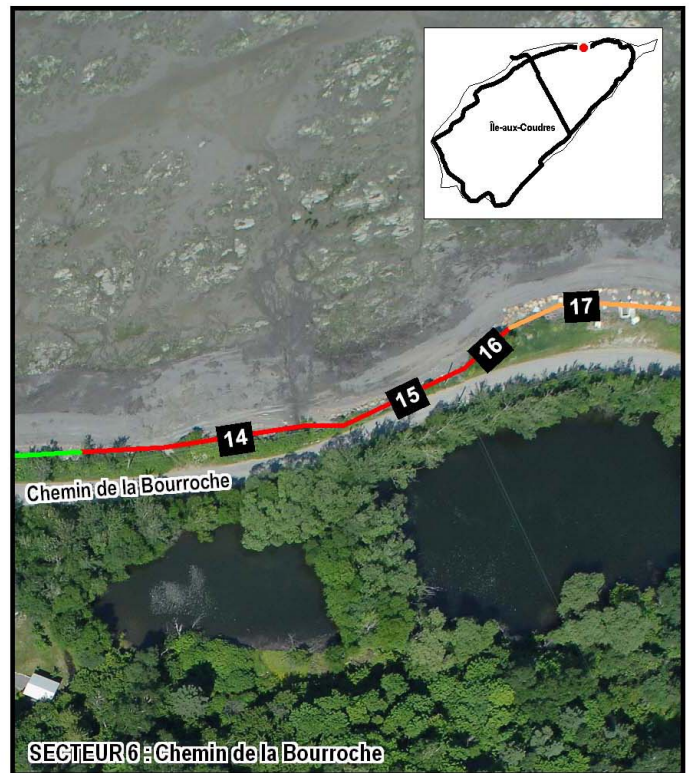
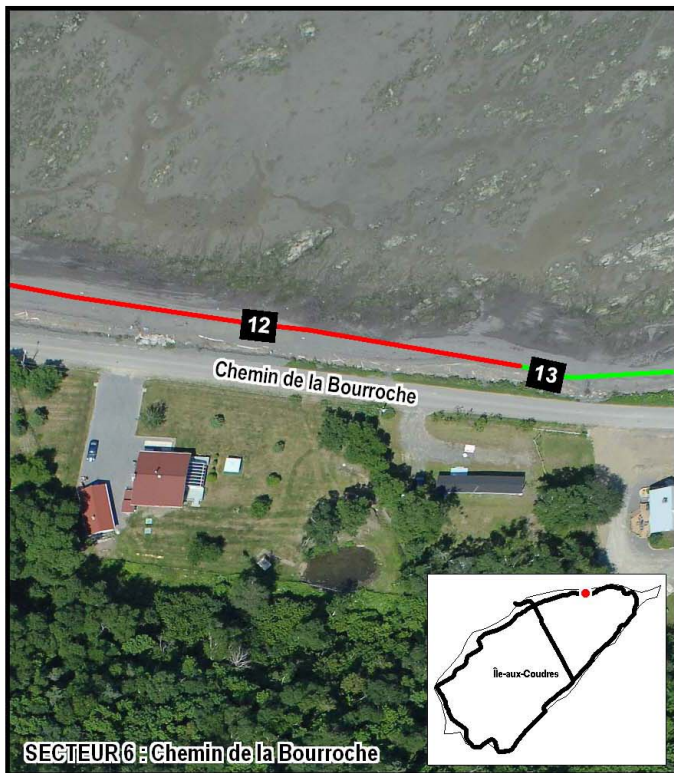
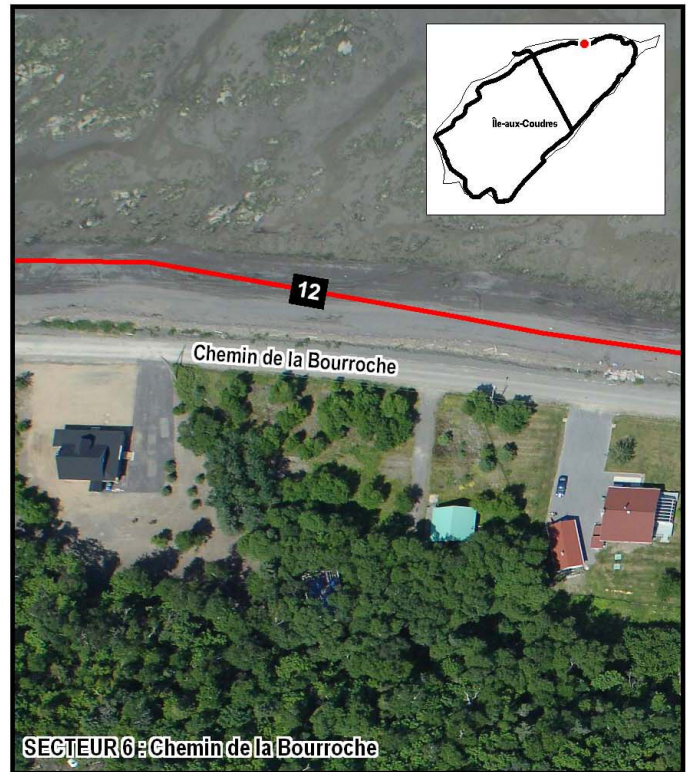
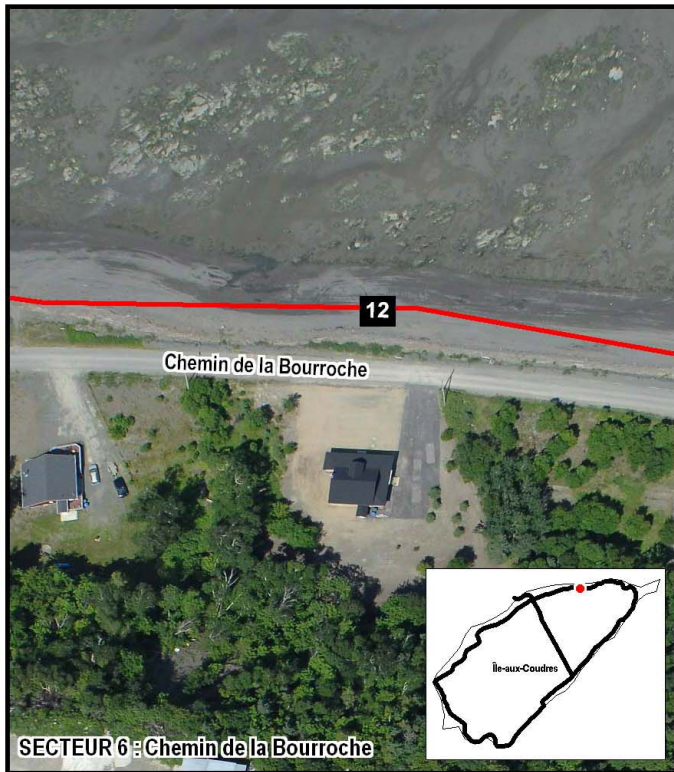
Décembre 2010

Source des photos : XEOS, 2008  
 Fichier : 57146\_A3\_XEOS\_101215.WOR

0 25 50 m

MTM, fuseau 7 (NAD83)





Identifiant de segment	Description
	Côte ne nécessitant pas d'intervention à court terme
	Structure stable
	Réfection de structure existante requise
	Nouvelle stabilisation requise

### ANNEXE 3.7

#### État de la côte et segments de côte nécessitant des travaux de stabilisation



Décembre 2010

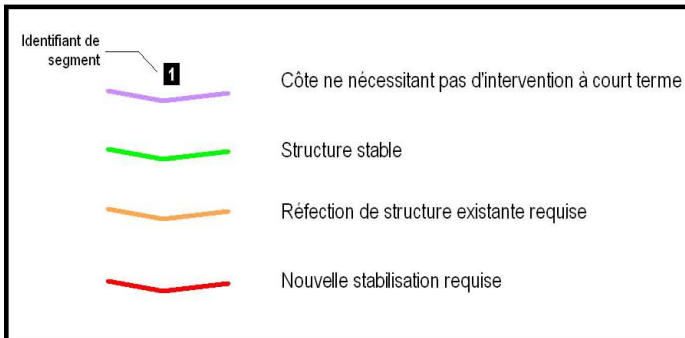
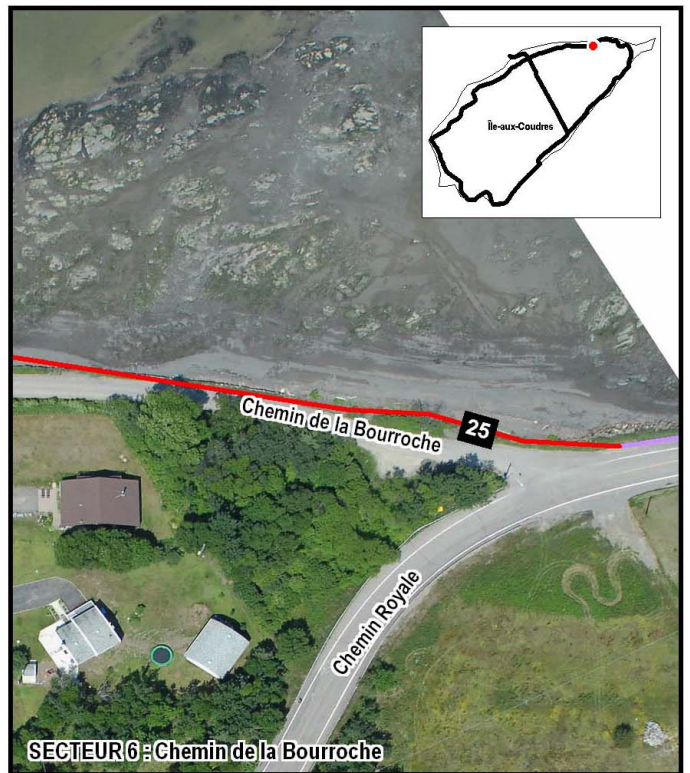
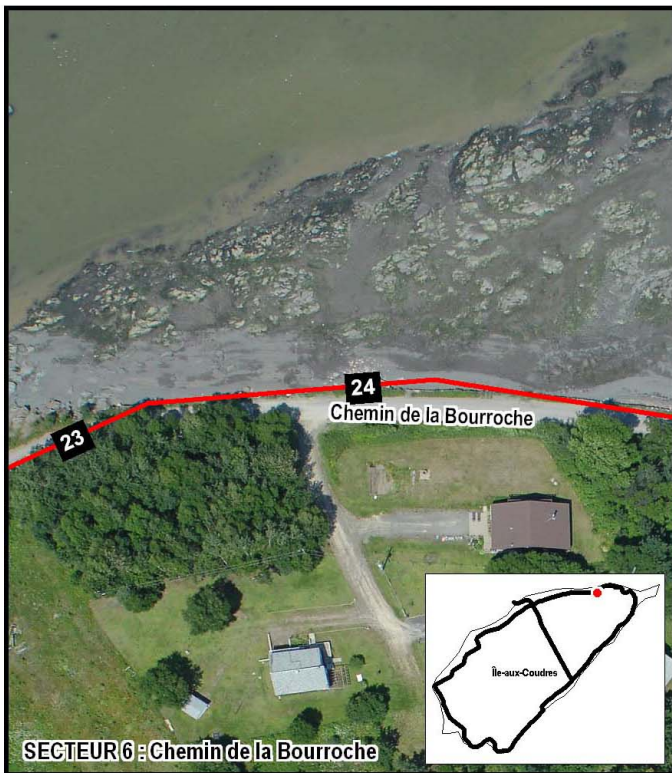
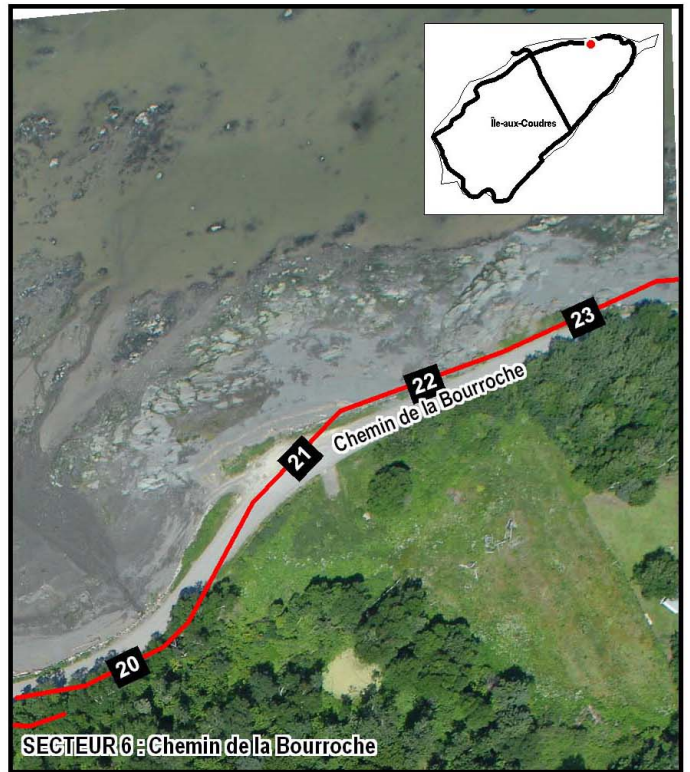
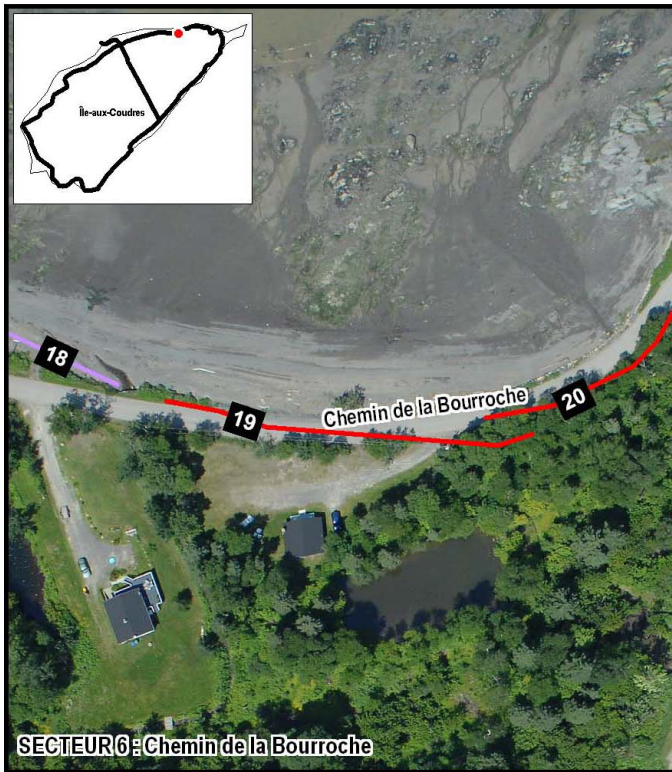
Source des photos : XEOS, 2008  
Fichier : 57146\_A3 XEOS\_101215.WOR

0 25 50 m

MTM, fuseau 7 (NAD83)







**ANNEXE 3.8**  
**État de la côte et segments de côte nécessitant des travaux de stabilisation**

**ROCHE**

Décembre 2010  
Source des photos : XEOS, 2008  
Fichier : 57146\_A3\_XEOS\_101215.WOR

0      25      50 m  
MTM, fuseau 7 (NAD83)