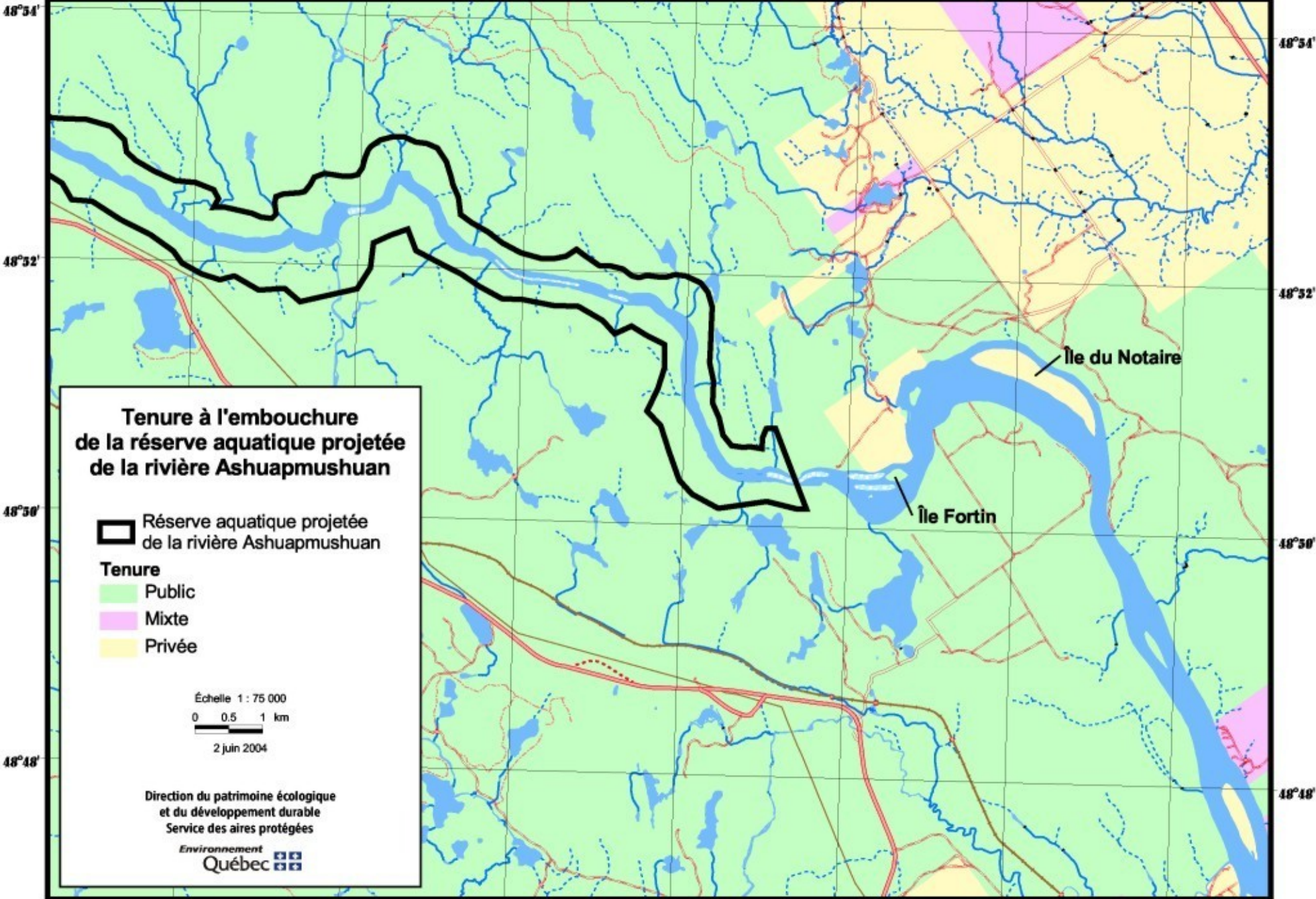






72°52' 72°50' 72°48' 72°46' 72°44' 72°42' 72°40'



**Tenure à l'embouchure
de la réserve aquatique projetée
de la rivière Ashuapmushuan**

-  Réserve aquatique projetée de la rivière Ashuapmushuan
- Tenure**
-  Public
-  Mixte
-  Privée

Échelle 1 : 75 000
 0 0,5 1 km
 2 juin 2004

Direction du patrimoine écologique
 et du développement durable
 Service des aires protégées
 Environnement
 Québec 

72°52' 72°50' 72°48' 72°46' 72°44' 72°42' 72°40'