

260 **DM68.1**
Projet minier aurifère Canadian Malartic
MRC La Vallée-de-l'Or 6211-08-005



Image © 2009 New York GIS

©2009 Google

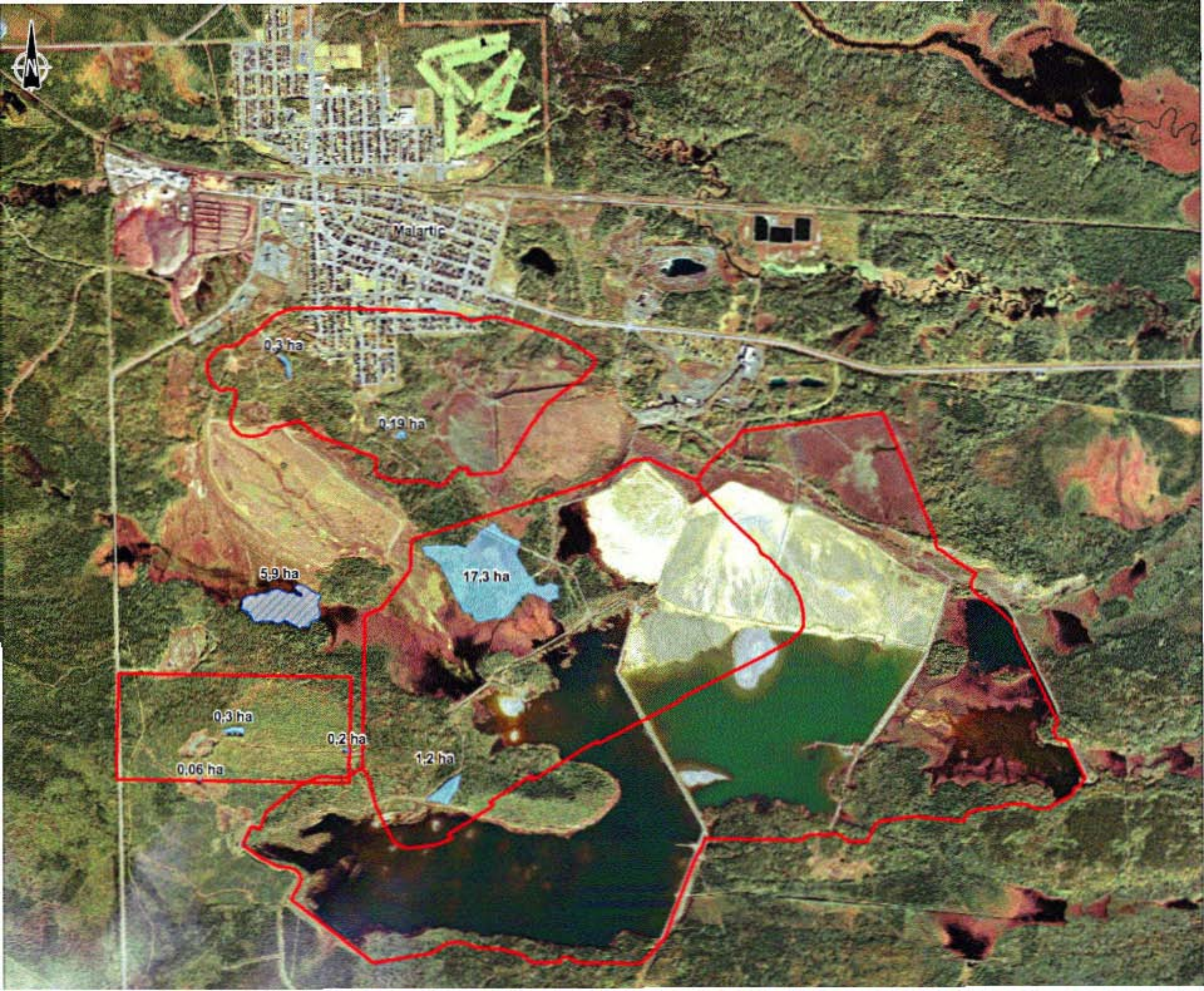
Date des images satellite : avr. 2005

43°05'04.01" N 79°04'20.73" O

Altitude 4838.ft



Michael



Malartic

0,3 ha

0,19 ha

5,9 ha

17,3 ha

0,3 ha

0,2 ha

0,06 ha

1,2 ha



Malartic

0.19 ha

5.9 ha

17.3 ha

0.3 ha

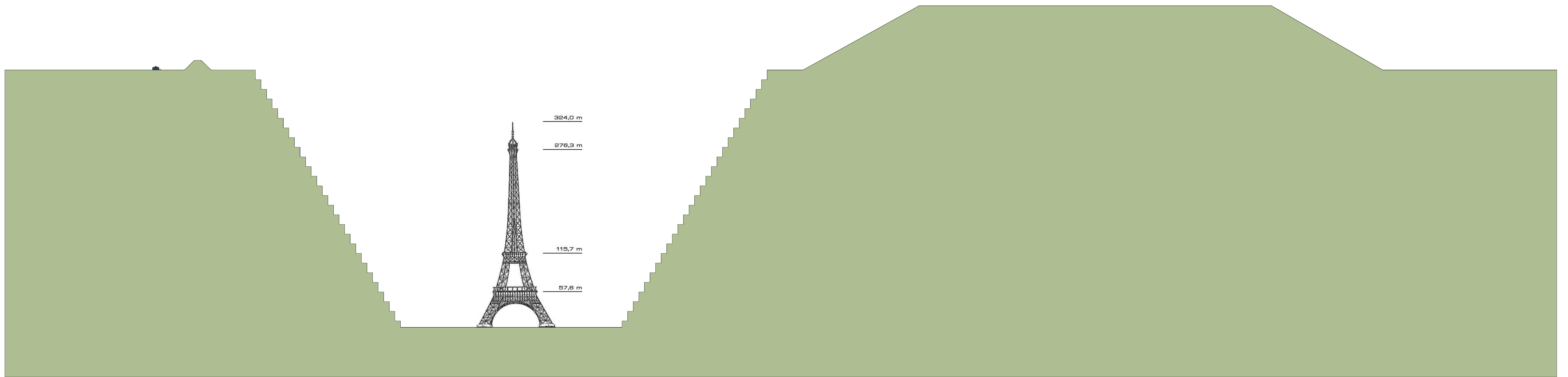
0.2 ha

1.2 ha

0.06 ha



Michael



COUPE DU SITE
1:1000

