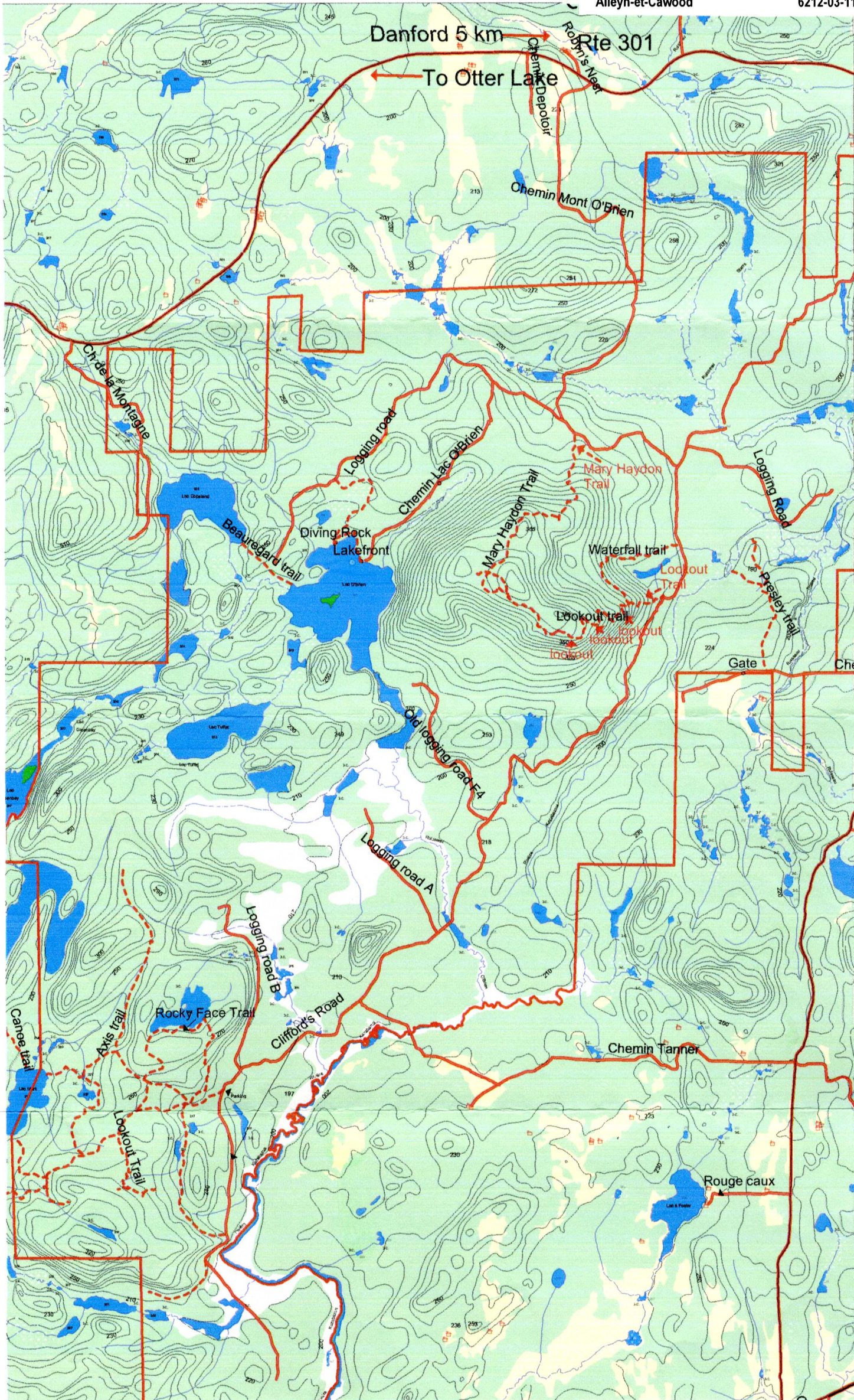


PARC MONT O'BRIEN

Projet d'établissement d'un lieu d'enfouissement technique à Danford Lake

Alley-n-et-Cawood

6212-03-112



YEAR ROUND WATERFRONT LOTS IN A GATINEAU HILLS NATURE PARK

Lac Miljour Estates

- Home
- About Lac Miljour
- Location
- Site Plan
- Pricing
- Photo Gallery
- Construction Options**
- F.A.Q.
- Contact Us



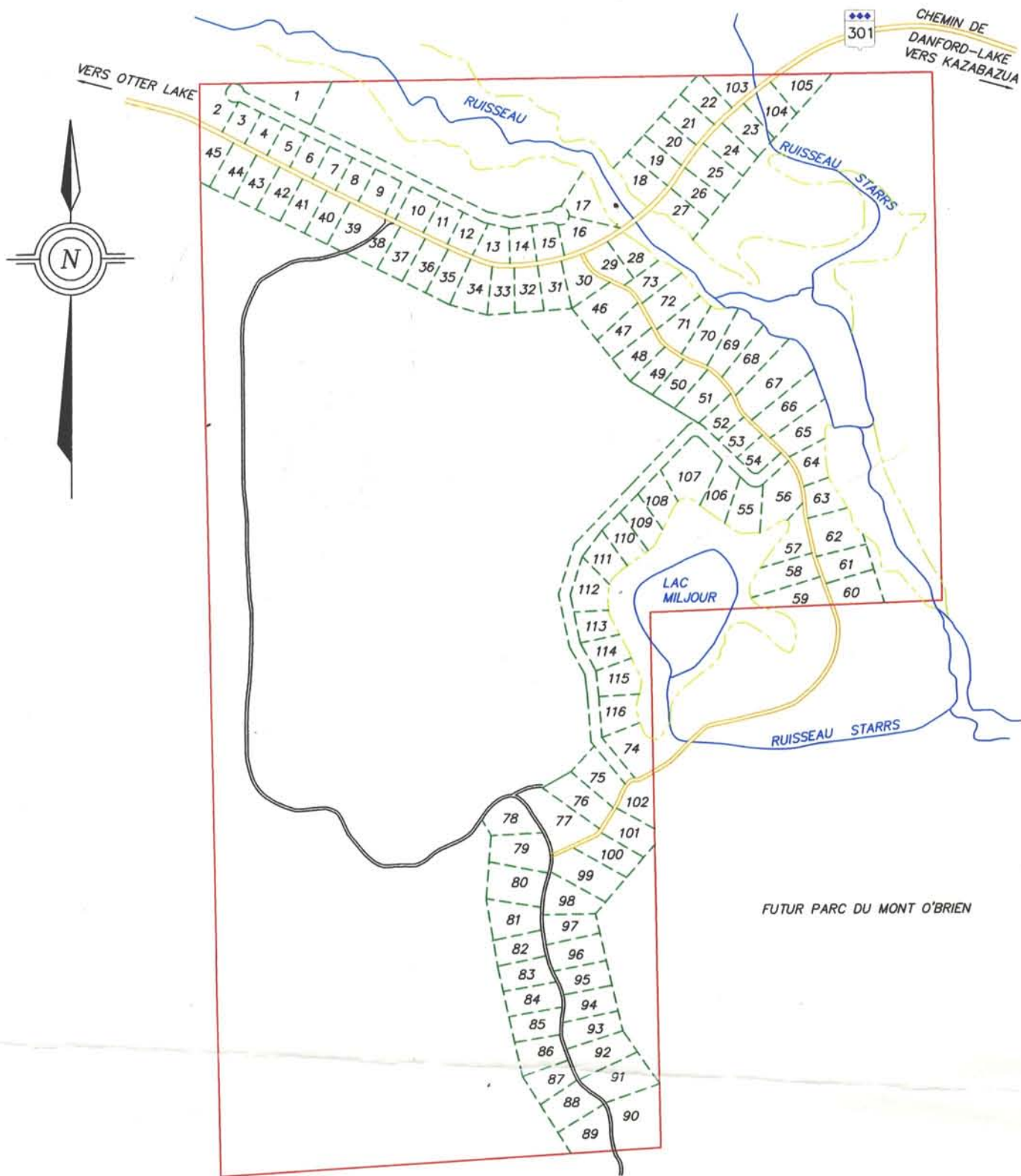
Lac Miljour Estates Construction Options

Several options available to purchasers

- Building kits - several to choose from at various builders.
- Developer can assist you in your project
- Turn key operation
- Build from your own plans
- Chalet style to be compatible with recreational village plans
- Call for details regarding Lac Miljour zoning bylaws

LAC MILJOUR ESTATES

PHASE # 1



Échelle 1:10 000

N.B. La disposition des lots, leur nombre et leur dimension sont approximatifs.

Plan projet d'ensemble

Lots 18 partie, 19 partie, 20 partie, 21 partie et 22 partie du rang 2

Cadastre du canton d'Alleyln

Municipalité des Cantons-Unis d'Alleyln-et-Cawood

Gatineau, le 3 septembre 2003

par

André Durocher
Arpenteur-Géomètre

684-2830 ou 243-4499

Minute : 13 466
Dossier : 00-0097



mont o'brien

home newsletters membership gallery about

français

The Mont O'Brien Association is dedicated to the preservation of a beautiful wilderness area on Public land near the village of Danford Lake, located in the Municipality of Allevyn-and-Cawood in the Outaouais Region. A new map of the Mont O'Brien region is being developed and will be published soon.



The 60 square kilometres of numerous streams and creeks, beautiful mixed forest in which some white pines have reached a 10 foot circumference, O'Brien Lake and Mont O'Brien itself, one of the largest hills in the region reaching 394 metres, are just some features that make this area so cherished by the 175 families (525 members), local residents and property owners in the region.

Many volunteers are involved with developing the trail network, upgrading and maintaining roads; organizing and participating in the family hikes; applying for grants, and participating at the board level.

The Mont O'Brien area is special not only for its beauty but also for the efforts of so many volunteers who have taken it upon themselves to make accessible this piece of Public land. With the increasing development of land in the Outaouais, it has never been more important to cherish the Public land we refer to as 'Mont O'Brien'.

We invite you to explore the Mont O'Brien area and see for yourself what makes it so special. **Become member today.**

See you on the Mont!

Join us for the Spring Hike 2007 Date to be announced soon.

In May, 2005, we had a morning hike along the Mary Haydon and Lookout trails. The 2007 spring hike is being planned now, so check back here soon for the date.

Upcoming Board of Directors Meetings