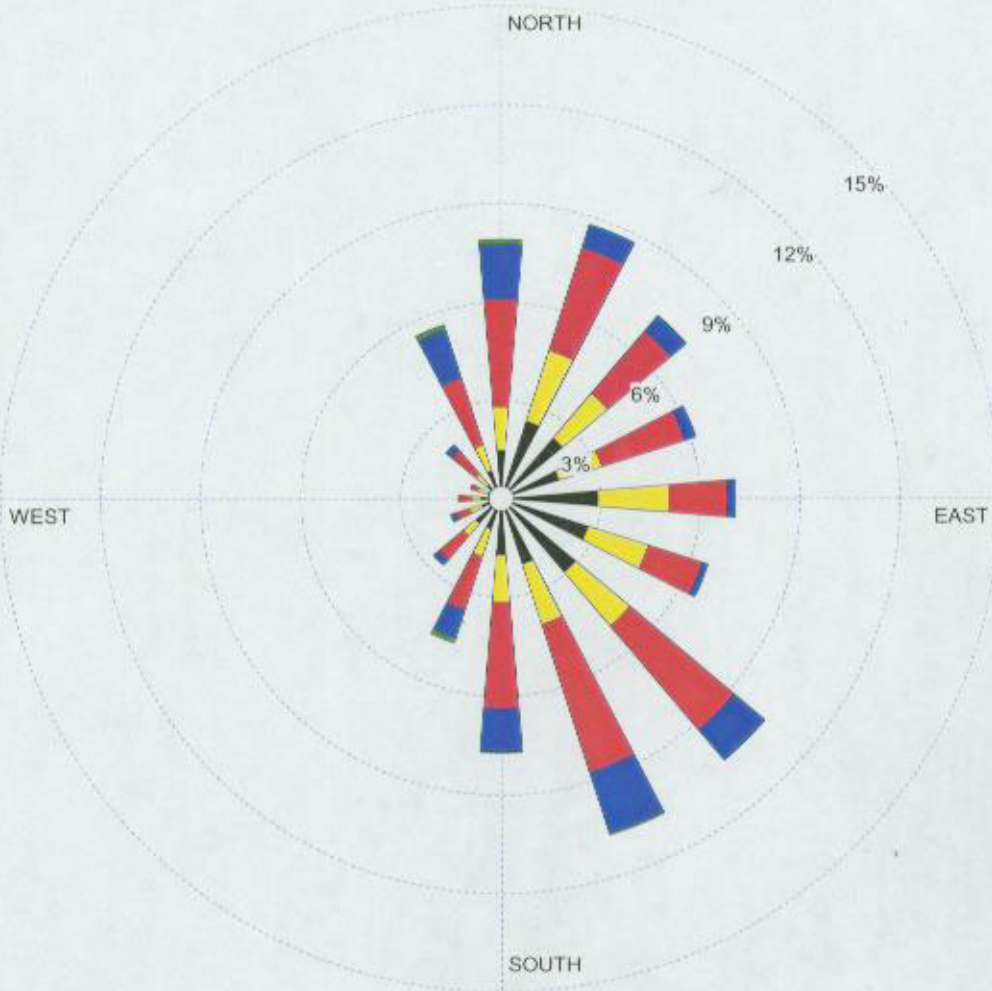


WIND ROSE PLOT:

Rose des vents, données météorologiques de Val-d'or

DISPLAY:

Wind Speed
Flow Vector (blowing to)



WIND SPEED
(m/s)

- >= 11.1
- 8.8 - 11.1
- 5.7 - 8.8
- 3.6 - 5.7
- 2.1 - 3.6
- 0.5 - 2.1

COMMENTS:

DATA PERIOD:

1997
janv. 1 - déc. 31
00:00 - 23:00

COMPANY NAME:

Dessau-Soprin

MODELER:

Luc Arguin, ing

CALM WINDS:

8.73%

TOTAL COUNT:

8719 hrs.

AVG. WIND SPEED:

3.66 m/s

DATE:

2003-05-09

PROJECT NO.:

270123-140



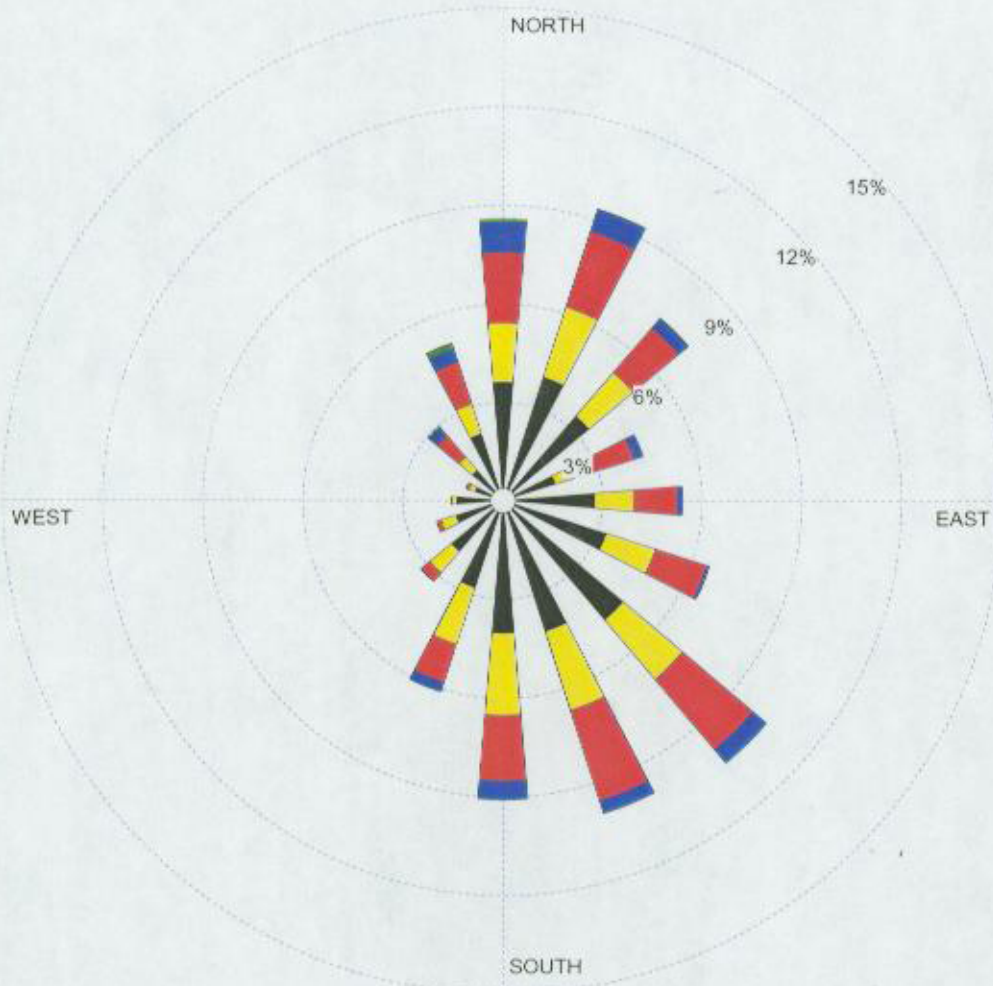
**DESSAU
SOPRIN**

WIND ROSE PLOT:

Rose des vents, données météorologiques de Val-d'or

DISPLAY:

Wind Speed
Flow Vector (blowing to)



WIND SPEED
(m/s)



COMMENTS:

DATA PERIOD:

1998
janv. 1 - déc. 31
00:00 - 23:00

COMPANY NAME:

Dessau-Soprin

MODELER:

Luc Arguin, ing



CALM WINDS:

6.94%

TOTAL COUNT:

8751 hrs.

AVG. WIND SPEED:

2.84 m/s

DATE:

2003-05-09

PROJECT NO.:

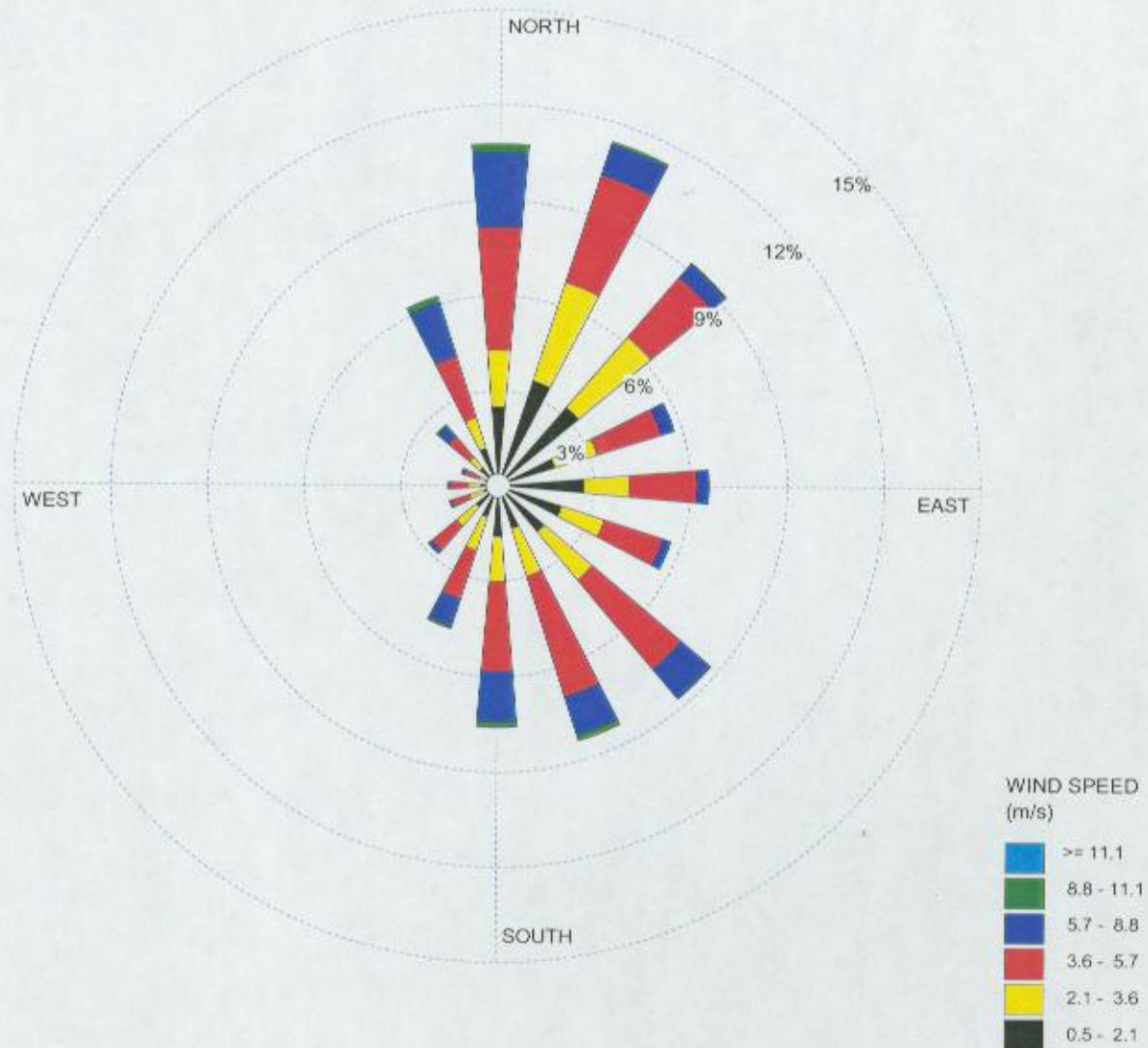
270123-140

WIND ROSE PLOT:

Rose des vents, données météorologiques de Val-d'or

DISPLAY:

Wind Speed
Flow Vector (blowing to)



COMMENTS:

DATA PERIOD:

1999
janv. 1 - déc. 31
00:00 - 23:00

COMPANY NAME:

Dessau-Soprin

MODELER:

Luc Arguin, ing



CALM WINDS:

5.39%

TOTAL COUNT:

8745 hrs.

AVG. WIND SPEED:

3.72 m/s

DATE:

2003-05-09

PROJECT NO.:

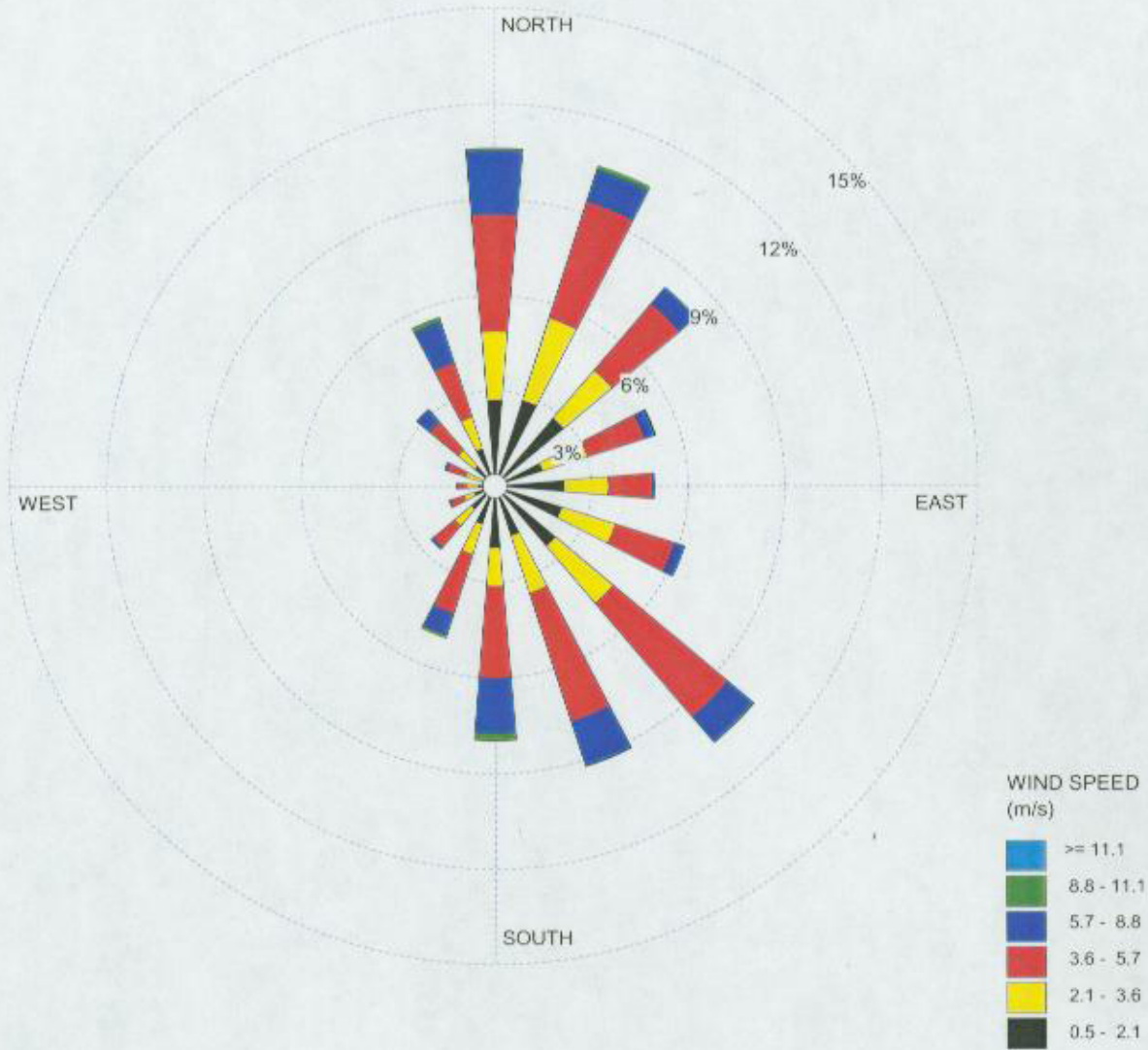
270123-140

WIND ROSE PLOT:

Rose des vents, données météorologiques de Val-d'or

DISPLAY:

Wind Speed
Flow Vector (blowing to)



COMMENTS:

DATA PERIOD:

2000
janv. 1 - déc. 31
00:00 - 23:00

COMPANY NAME:

Dessau-Soprin

MODELER:

Luc Arguin, ing



CALM WINDS:

6.14%

TOTAL COUNT:

8780 hrs.

AVG. WIND SPEED:

3.65 m/s

DATE:

2003-05-09

PROJECT NO.:

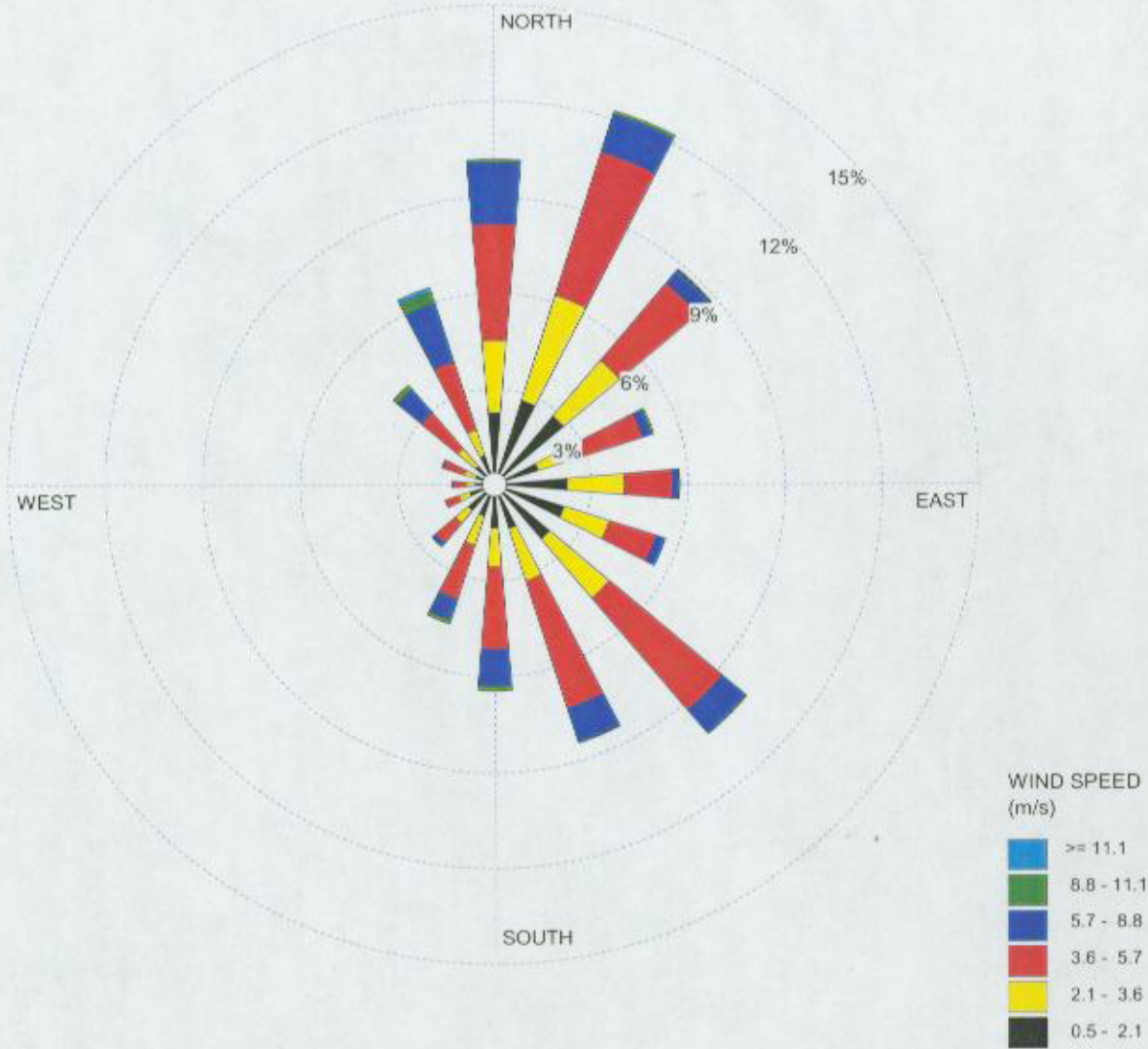
270123-140

WIND ROSE PLOT:

Rose des vents, données météorologiques de Val-d'or

DISPLAY:

Wind Speed
Flow Vector (blowing to)



COMMENTS:

DATA PERIOD:

2001
janv. 1 - déc. 31
00:00 - 23:00

COMPANY NAME:

Dessau-Soprin

MODELER:

Luc Arguin, ing



CALM WINDS:

5.00%

TOTAL COUNT:

8740 hrs.

AVG. WIND SPEED:

3.75 m/s

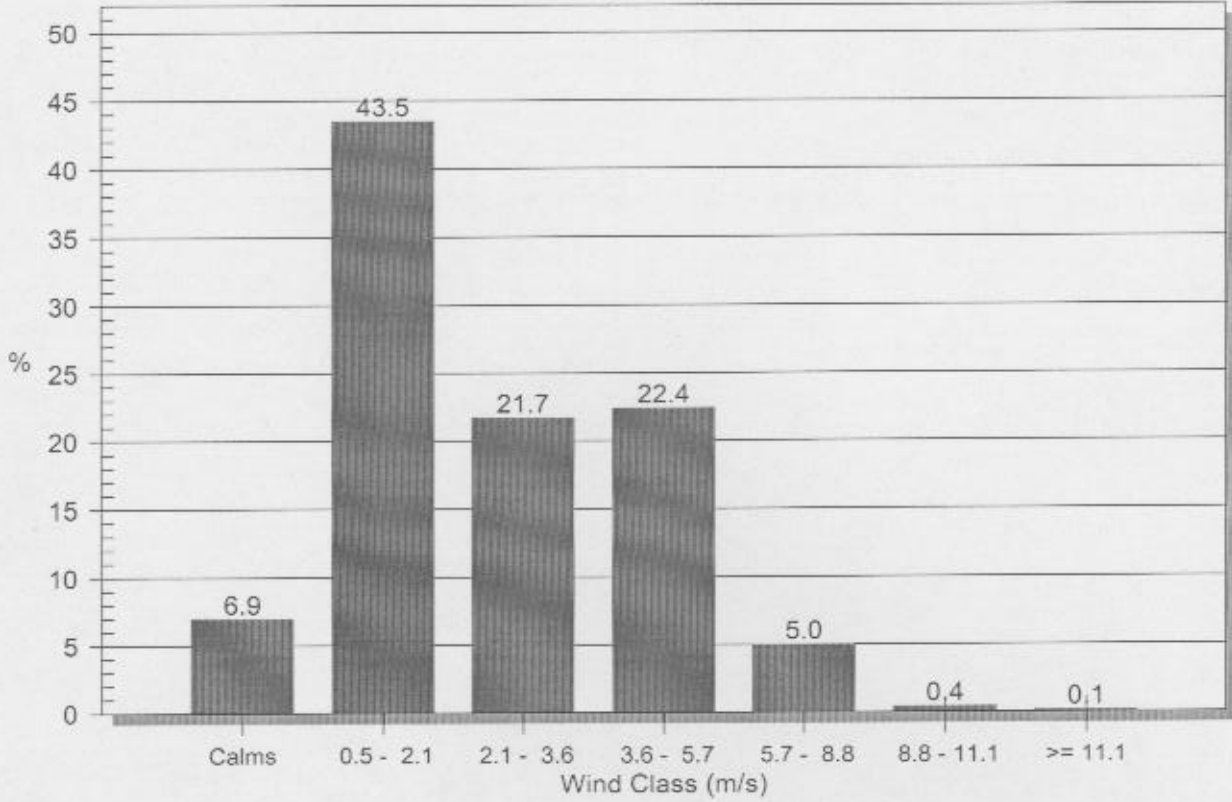
DATE:

2003-05-09

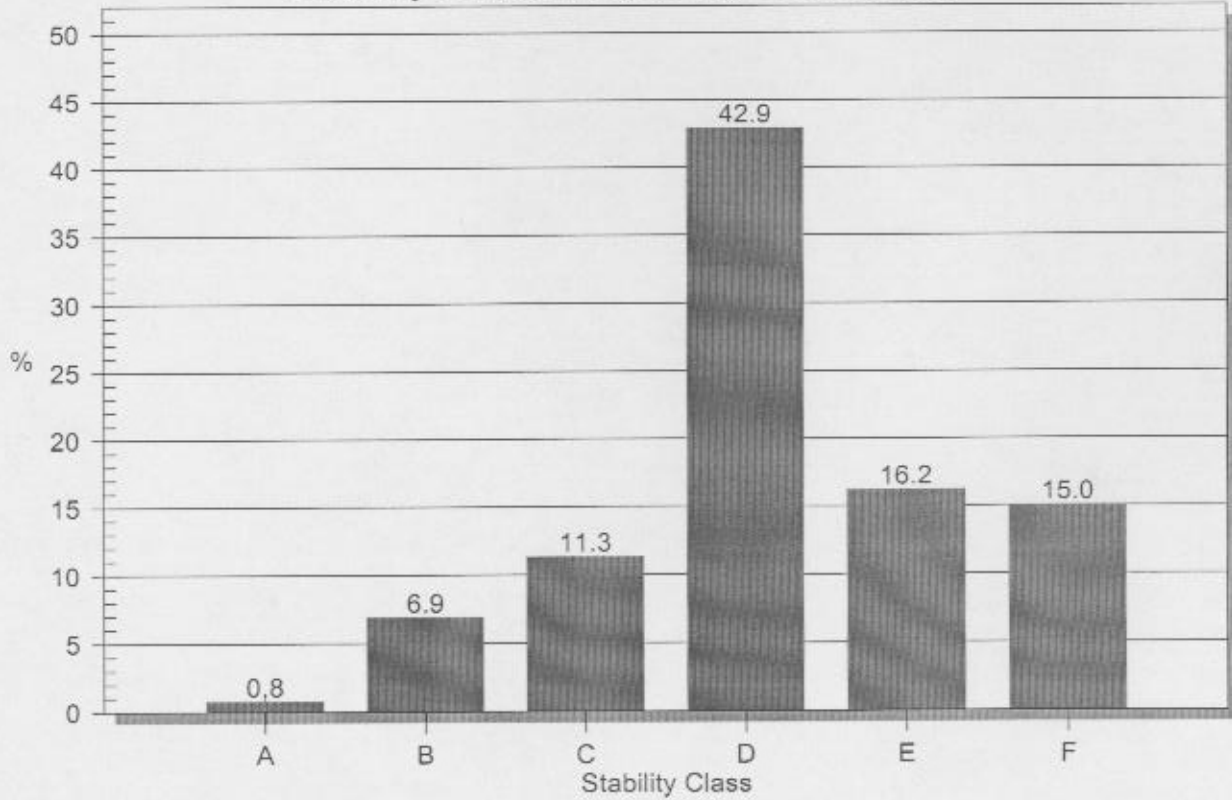
PROJECT NO.:

270123-140

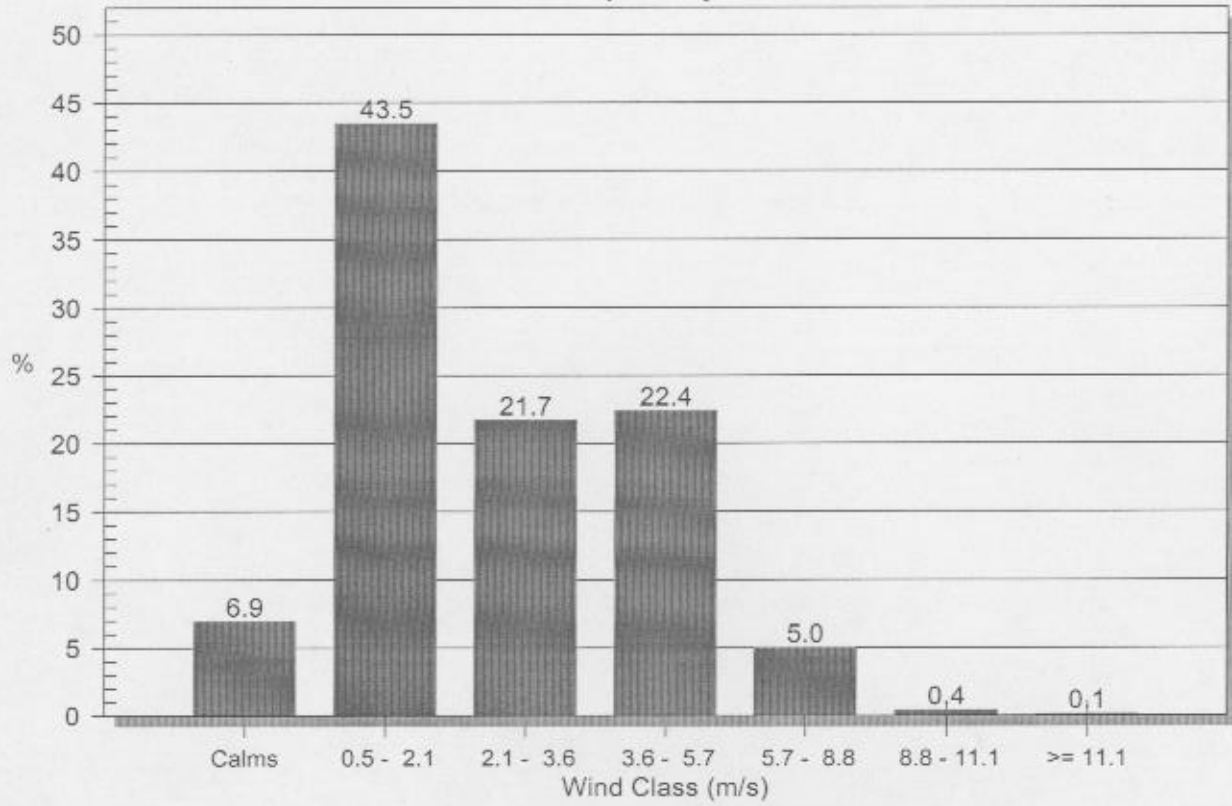
Wind Class Frequency Distribution



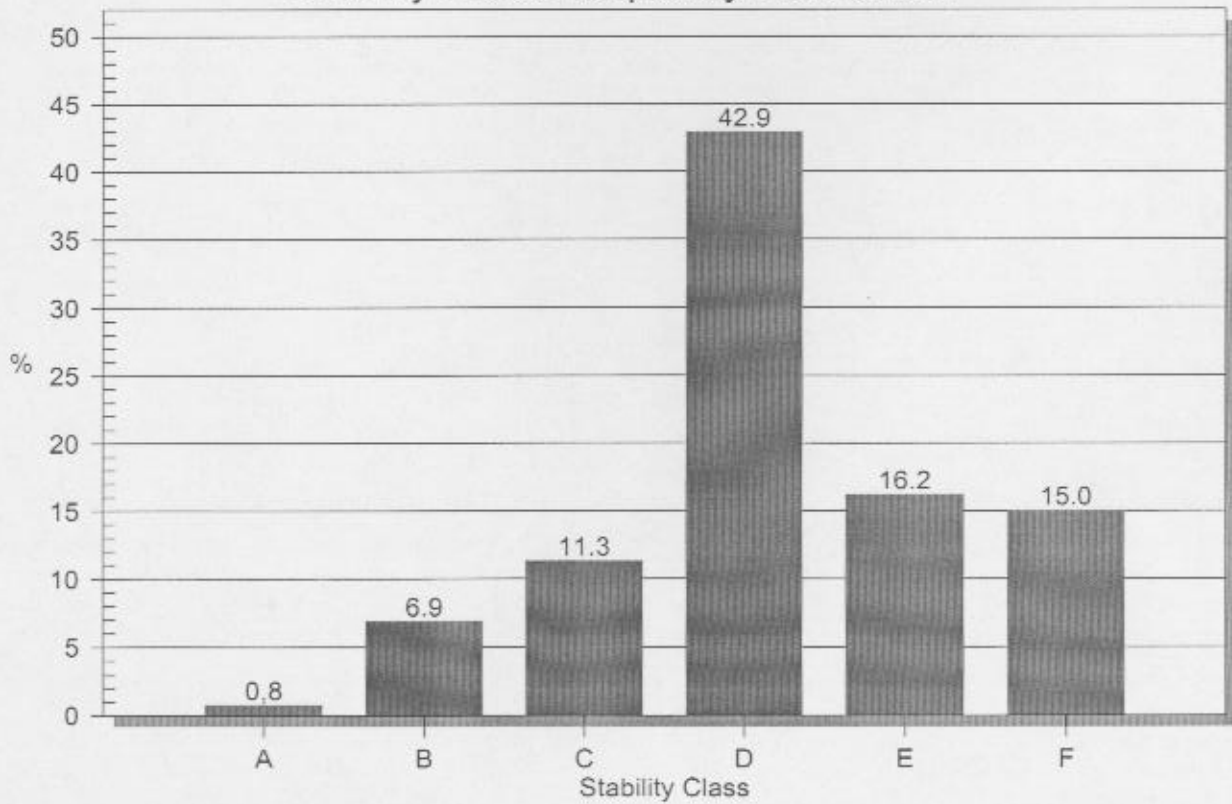
Stability Class Frequency Distribution



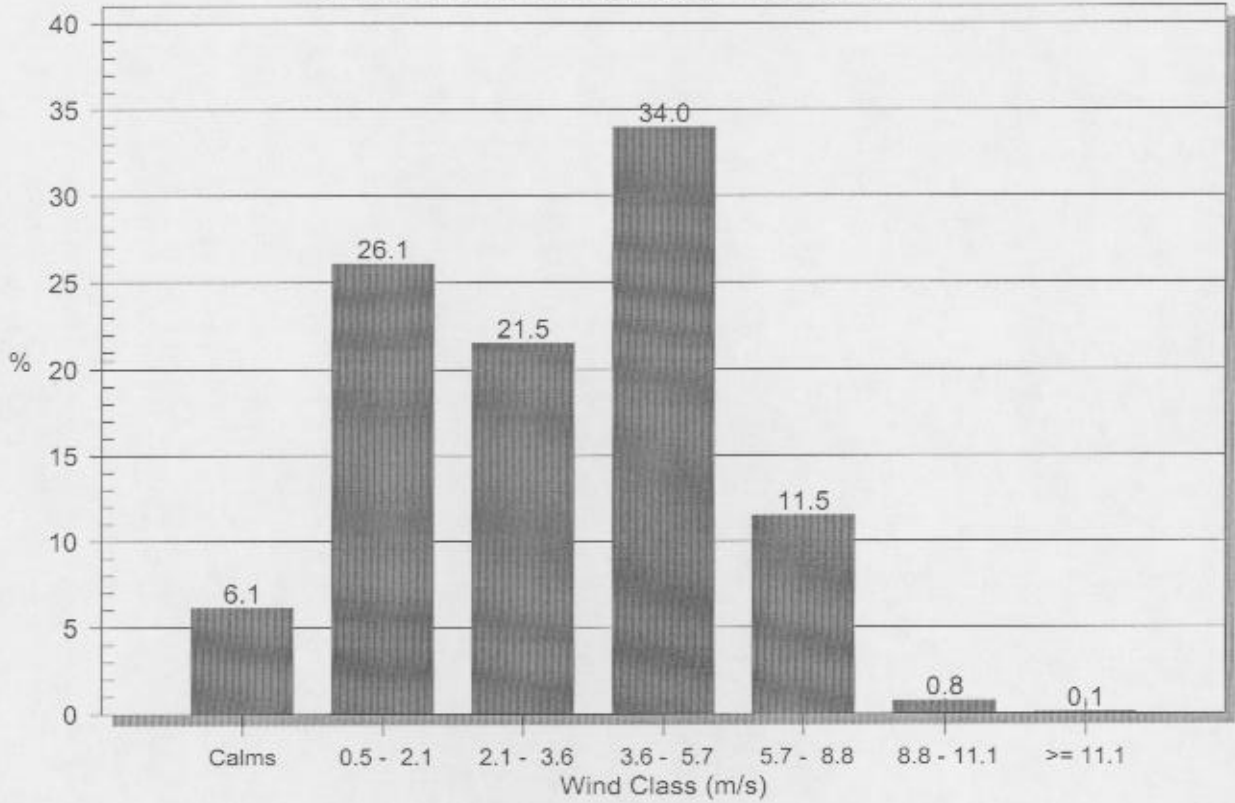
Wind Class Frequency Distribution



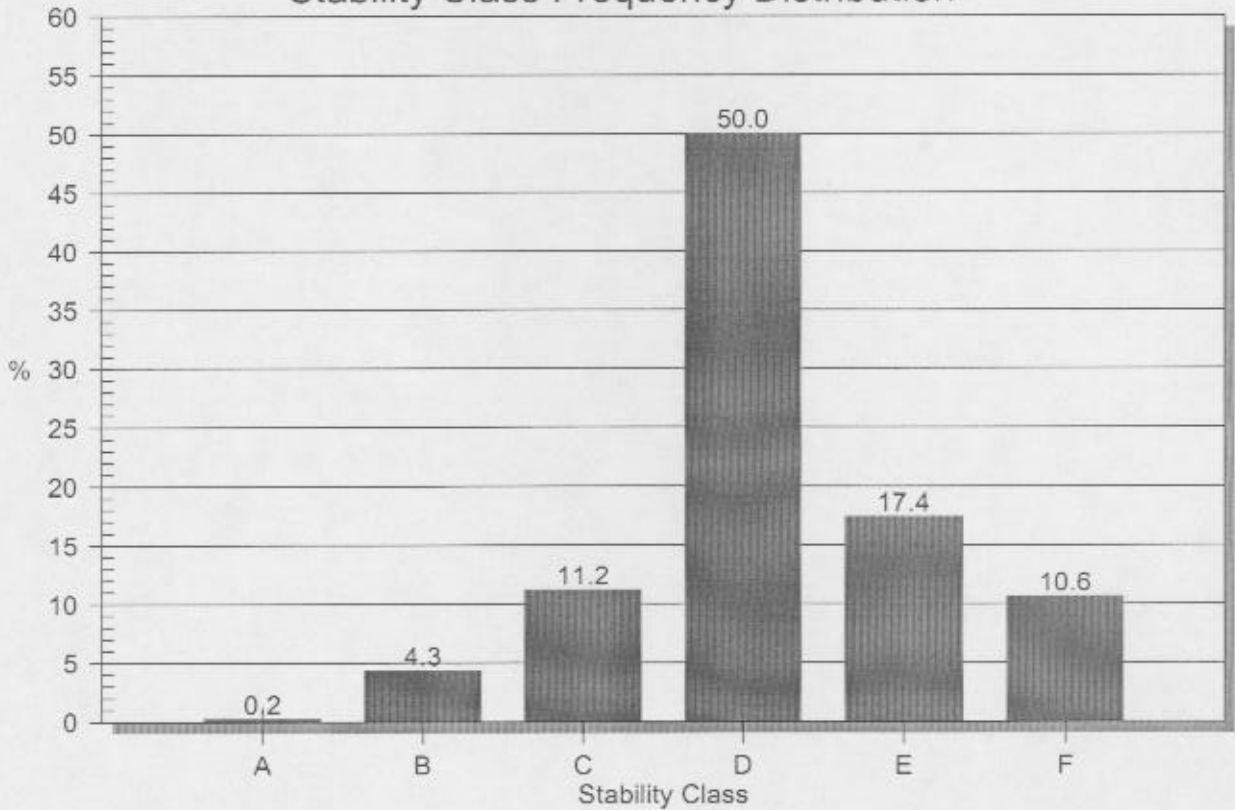
Stability Class Frequency Distribution



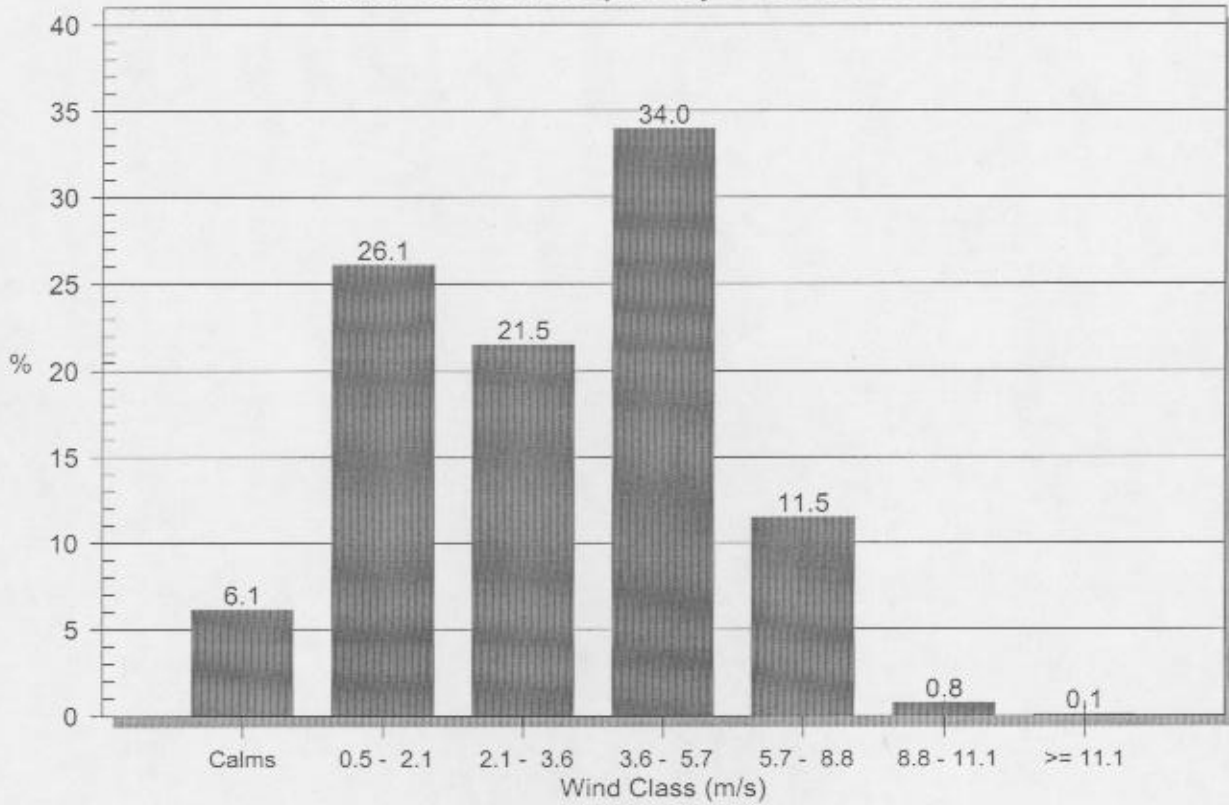
Wind Class Frequency Distribution



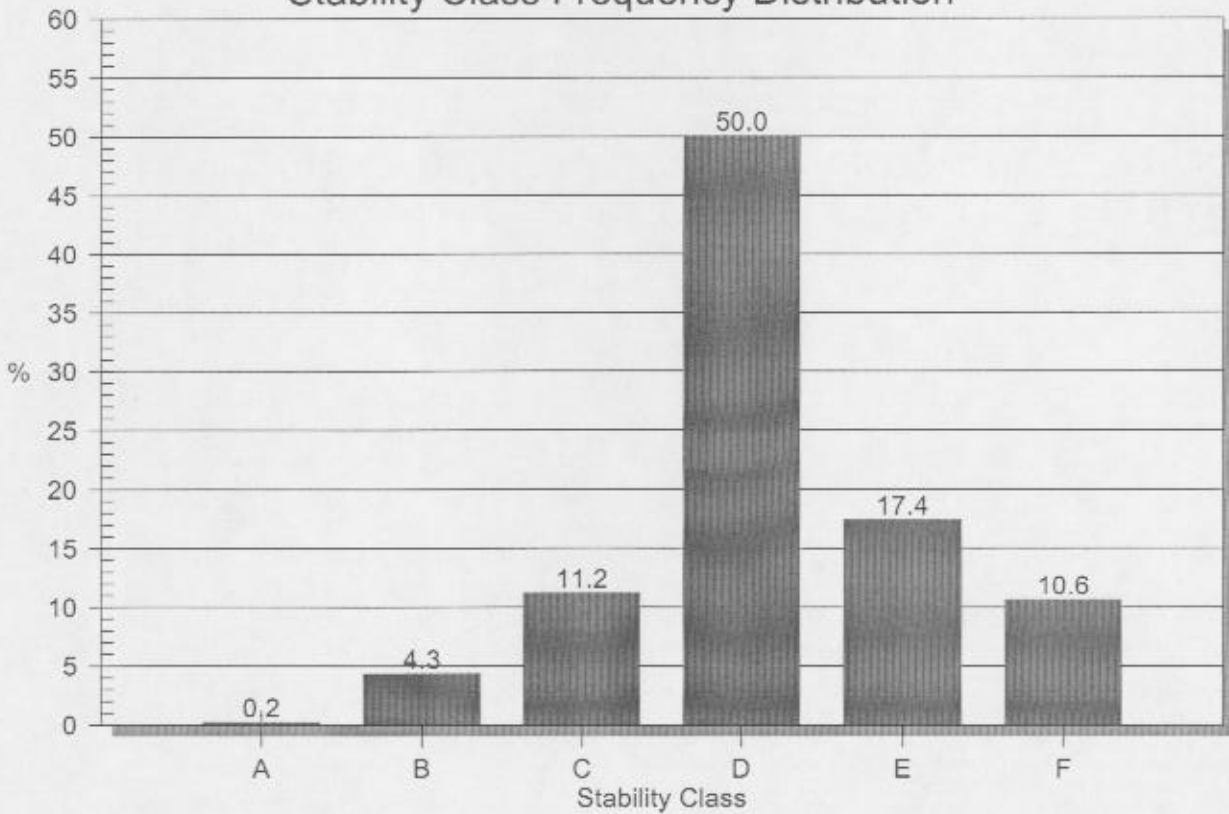
Stability Class Frequency Distribution



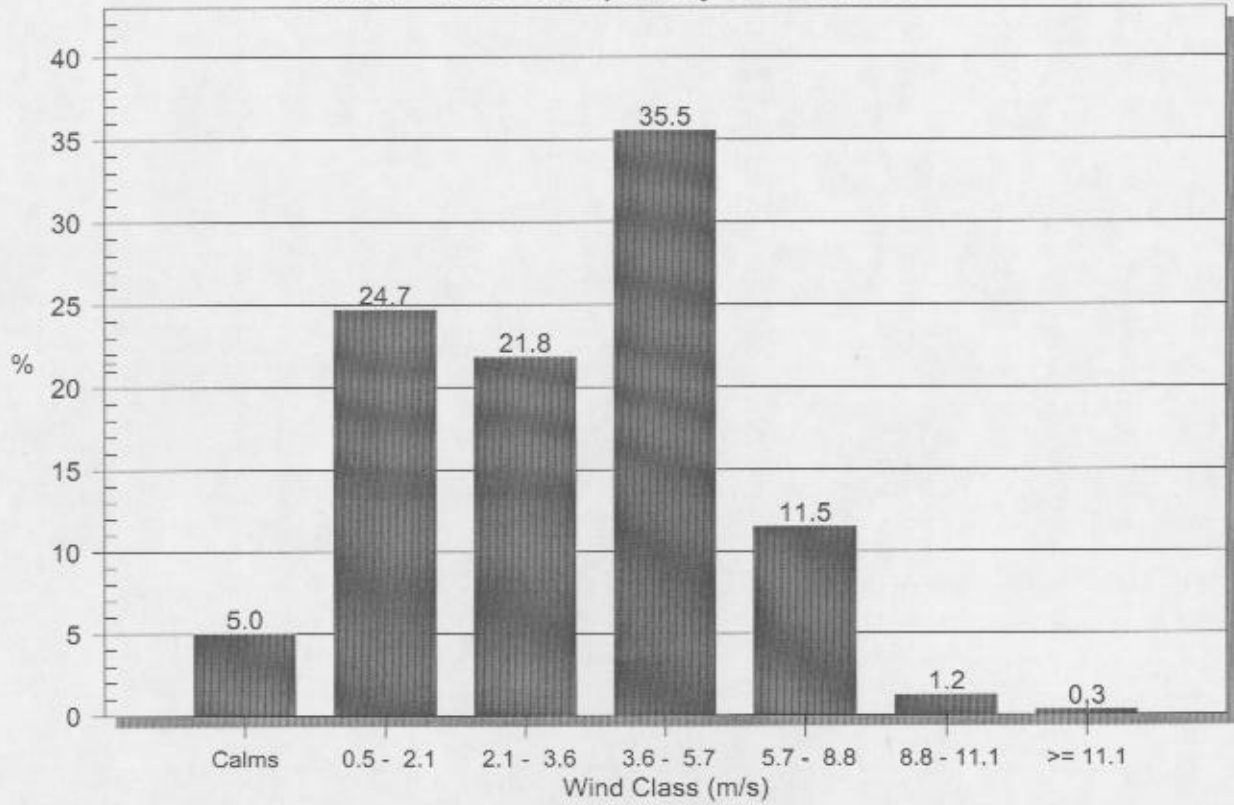
Wind Class Frequency Distribution



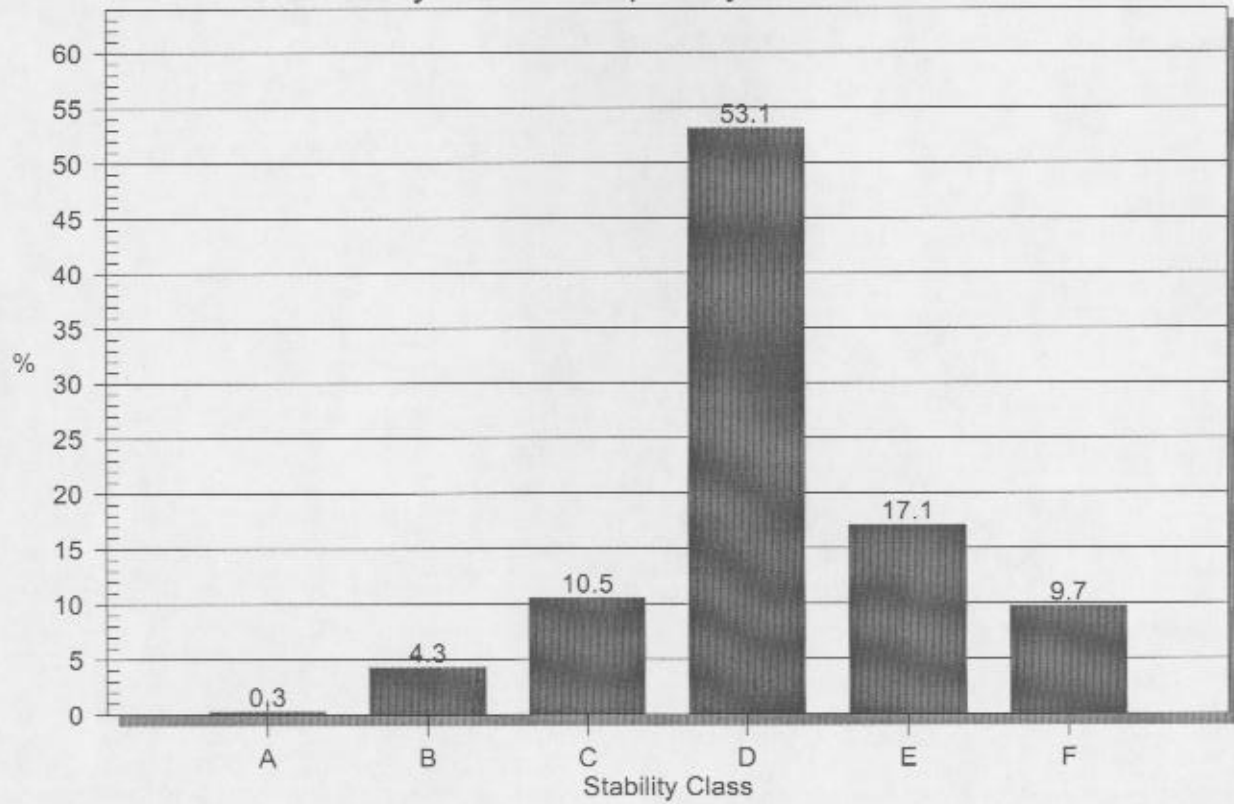
Stability Class Frequency Distribution



Wind Class Frequency Distribution



Stability Class Frequency Distribution



Station ID: 70986
 Year: 1997
 Date Range: janv. 1 - déc. 31
 Time Range: 00:00 - 23:00

Run ID:

Frequency Distribution
 (Count)

	Flow Vector (Blowing To) / Wind Speed (m/s)						Total
	0.5 - 2.1	2.1 - 3.6	3.6 - 5.7	5.7 - 8.8	8.8 - 11.1	>= 11.1	
348.75-11.25	130	114	285	146	12	1	688
11.25-33.75	217	196	286	63	0	1	763
33.75-56.25	211	155	216	52	2	1	637
56.25-78.75	160	117	228	31	0	0	536
78.75-101.25	254	185	153	22	0	0	614
101.25-123.75	239	166	148	17	0	0	570
123.75-146.25	255	186	358	104	2	0	905
146.25-168.75	182	167	410	169	5	0	933
168.75-191.25	149	125	279	111	4	3	671
191.25-213.75	86	75	146	78	16	0	401
213.75-236.25	87	42	82	21	0	0	232
236.25-258.75	53	33	36	17	0	0	139
258.75-281.25	52	24	33	3	0	0	112
281.25-303.75	35	29	18	1	0	0	83
303.75-326.25	49	38	80	20	1	0	188
326.25-348.75	79	71	187	133	14	2	486
Total	2238	1723	2945	988	56	8	8719

Frequency of Calm Winds: 761
 Average Wind Speed: 3.66 m/s

Station ID: 70986
 Year: 1998
 Date Range: janv. 1 - déc. 31
 Time Range: 00:00 - 23:00

Run ID:

Frequency Distribution
 (Count)

	Flow Vector (Blowing To) / Wind Speed (m/s)						Total
	0.5 - 2.1	2.1 - 3.6	3.6 - 5.7	5.7 - 8.8	8.8 - 11.1	>= 11.1	
348.75-11.25	317	157	187	80	9	0	750
11.25-33.75	347	195	210	60	3	0	815
33.75-56.25	296	152	156	32	2	0	638
56.25-78.75	145	89	128	25	0	0	387
78.75-101.25	240	103	116	13	0	0	472
101.25-123.75	285	136	143	6	1	0	571
123.75-146.25	414	205	243	48	0	0	910
146.25-168.75	364	218	253	34	1	0	870
168.75-191.25	351	216	175	50	0	1	793
191.25-213.75	243	157	106	25	1	0	532
213.75-236.25	178	73	28	3	0	0	282
236.25-258.75	131	40	12	1	0	0	184
258.75-281.25	122	14	1	0	0	0	137
281.25-303.75	77	18	7	1	0	0	103
303.75-326.25	106	45	77	23	3	5	259
326.25-348.75	188	82	117	36	15	3	441
Total	3804	1900	1959	437	35	9	8751

Frequency of Calm Winds: 607
 Average Wind Speed: 2.84 m/s

Station ID: 70986
 Year: 1999
 Date Range: janv. 1 - déc. 31
 Time Range: 00:00 - 23:00

Run ID:

Frequency Distribution
 (Count)

	Flow Vector (Blowing To) / Wind Speed (m/s)						Total
	0.5 - 2.1	2.1 - 3.6	3.6 - 5.7	5.7 - 8.8	8.8 - 11.1	>= 11.1	
348.75-11.25	218	156	337	205	24	0	940
11.25-33.75	305	284	309	89	8	0	995
33.75-56.25	285	255	214	48	4	0	806
56.25-78.75	163	119	181	38	1	0	502
78.75-101.25	232	124	183	34	0	0	573
101.25-123.75	182	121	168	24	0	0	495
123.75-146.25	166	171	318	103	3	0	761
146.25-168.75	125	135	346	110	15	1	732
168.75-191.25	141	122	245	137	13	4	662
191.25-213.75	92	96	138	79	6	2	413
213.75-236.25	78	68	87	12	2	0	247
236.25-258.75	41	40	51	7	0	0	139
258.75-281.25	50	29	50	7	0	0	136
281.25-303.75	36	20	41	8	0	0	105
303.75-326.25	65	38	73	39	5	0	220
326.25-348.75	110	86	178	155	19	0	548
Total	2289	1864	2919	1095	100	7	8745

Frequency of Calm Winds: 471
 Average Wind Speed: 3.72 m/s

Station ID: 70986
 Year: 2000
 Date Range: janv. 1 - déc. 31
 Time Range: 00:00 - 23:00

Run ID:

Frequency Distribution
 (Count)

	Flow Vector (Blowing To) / Wind Speed (m/s)						Total
	0.5 - 2.1	2.1 - 3.6	3.6 - 5.7	5.7 - 8.8	8.8 - 11.1	>= 11.1	
348.75-11.25	238	189	320	175	5	2	929
11.25-33.75	249	237	335	89	14	0	924
33.75-56.25	245	173	239	59	0	0	716
56.25-78.75	136	129	161	30	2	1	459
78.75-101.25	188	121	118	7	0	0	434
101.25-123.75	191	153	169	29	0	0	542
123.75-146.25	216	205	407	91	1	1	921
146.25-168.75	144	165	368	127	3	0	807
168.75-191.25	169	106	250	151	19	3	698
191.25-213.75	111	87	169	63	7	0	437
213.75-236.25	84	60	76	8	0	0	228
236.25-258.75	58	32	37	4	0	0	131
258.75-281.25	45	30	26	3	0	0	104
281.25-303.75	34	50	51	9	0	0	144
303.75-326.25	72	59	100	46	1	0	278
326.25-348.75	109	92	156	118	14	0	489
Total	2289	1888	2982	1009	66	7	8780

Frequency of Calm Winds: 539
 Average Wind Speed: 3.65 m/s

Station ID: 70986
 Year: 2001
 Date Range: janv. 1 - déc. 31
 Time Range: 00:00 - 23:00

Run ID:

Frequency Distribution
 (Count)

	Flow Vector (Blowing To) / Wind Speed (m/s)						
	0.5 - 2.1	2.1 - 3.6	3.6 - 5.7	5.7 - 8.8	8.8 - 11.1	>= 11.1	Total
348.75-11.25	197	197	317	168	6	3	888
11.25-33.75	242	300	409	110	7	1	1069
33.75-56.25	245	199	274	45	3	4	770
56.25-78.75	125	120	175	26	6	0	452
78.75-101.25	196	155	129	18	2	0	500
101.25-123.75	198	127	132	27	0	0	484
123.75-146.25	195	210	398	83	4	0	890
146.25-168.75	127	148	363	97	3	0	738
168.75-191.25	120	103	224	99	13	2	561
191.25-213.75	91	83	153	59	11	1	398
213.75-236.25	93	44	71	13	1	0	222
236.25-258.75	71	30	40	0	0	0	141
258.75-281.25	53	23	37	3	0	0	116
281.25-303.75	54	32	58	6	0	0	150
303.75-326.25	67	62	129	83	14	2	357
326.25-348.75	84	73	196	167	35	12	567
Total	2158	1906	3105	1004	105	25	8740

Frequency of Calm Winds: 437
 Average Wind Speed: 3.75 m/s

Station ID: 70986
 Year: 1997
 Date Range: janv. 1 - déc. 31
 Time Range: 00:00 - 23:00

Run ID:

Frequency Distribution
 (Normalized)

	Flow Vector (Blowing To) / Wind Speed (m/s)						
	0.5 - 2.1	2.1 - 3.6	3.6 - 5.7	5.7 - 8.8	8.8 - 11.1	>= 11.1	Total
348.75-11.25	0.014910	0.013075	0.032687	0.016745	0.001376	0.000115	0.078908
11.25-33.75	0.024888	0.022480	0.032802	0.007226	0.000000	0.000115	0.087510
33.75-56.25	0.024200	0.017777	0.024773	0.005964	0.000229	0.000115	0.073059
56.25-78.75	0.018351	0.013419	0.026150	0.003555	0.000000	0.000000	0.061475
78.75-101.25	0.029132	0.021218	0.017548	0.002523	0.000000	0.000000	0.070421
101.25-123.75	0.027411	0.019039	0.016974	0.001950	0.000000	0.000000	0.065374
123.75-146.25	0.029246	0.021333	0.041060	0.011928	0.000229	0.000000	0.103796
146.25-168.75	0.020874	0.019154	0.047024	0.019383	0.000573	0.000000	0.107008
168.75-191.25	0.017089	0.014337	0.031999	0.012731	0.000459	0.000344	0.076958
191.25-213.75	0.009864	0.008602	0.016745	0.008946	0.001835	0.000000	0.045992
213.75-236.25	0.009978	0.004817	0.009405	0.002409	0.000000	0.000000	0.026609
236.25-258.75	0.006079	0.003785	0.004129	0.001950	0.000000	0.000000	0.015942
258.75-281.25	0.005964	0.002753	0.003785	0.000344	0.000000	0.000000	0.012846
281.25-303.75	0.004014	0.003326	0.002064	0.000115	0.000000	0.000000	0.009519
303.75-326.25	0.005620	0.004358	0.009175	0.002294	0.000115	0.000000	0.021562
326.25-348.75	0.009061	0.008143	0.021447	0.015254	0.001606	0.000229	0.055740
Total	0.256681	0.197614	0.337768	0.113316	0.006423	0.000918	0.912719

Frequency of Calm Winds: 8.73%
 Average Wind Speed: 3.66 m/s

Station ID: 70986
 Year: 1998
 Date Range: janv. 1 - déc. 31
 Time Range: 00:00 - 23:00

Run ID:

Frequency Distribution
 (Normalized)

	Flow Vector (Blowing To) / Wind Speed (m/s)						Total
	0.5 - 2.1	2.1 - 3.6	3.6 - 5.7	5.7 - 8.8	8.8 - 11.1	>= 11.1	
348.75-11.25	0.036224	0.017941	0.021369	0.009142	0.001028	0.000000	0.085704
11.25-33.75	0.039653	0.022283	0.023997	0.006856	0.000343	0.000000	0.093132
33.75-56.25	0.033825	0.017369	0.017827	0.003657	0.000229	0.000000	0.072906
56.25-78.75	0.016570	0.010170	0.014627	0.002857	0.000000	0.000000	0.044224
78.75-101.25	0.027425	0.011770	0.013256	0.001486	0.000000	0.000000	0.053937
101.25-123.75	0.032568	0.015541	0.016341	0.000686	0.000114	0.000000	0.065250
123.75-146.25	0.047309	0.023426	0.027768	0.005485	0.000000	0.000000	0.103988
146.25-168.75	0.041595	0.024911	0.028911	0.003885	0.000114	0.000000	0.099417
168.75-191.25	0.040110	0.024683	0.019998	0.005714	0.000000	0.000114	0.090618
191.25-213.75	0.027768	0.017941	0.012113	0.002857	0.000114	0.000000	0.060793
213.75-236.25	0.020341	0.008342	0.003200	0.000343	0.000000	0.000000	0.032225
236.25-258.75	0.014970	0.004571	0.001371	0.000114	0.000000	0.000000	0.021026
258.75-281.25	0.013941	0.001600	0.000114	0.000000	0.000000	0.000000	0.015655
281.25-303.75	0.008799	0.002057	0.000800	0.000114	0.000000	0.000000	0.011770
303.75-326.25	0.012113	0.005142	0.008799	0.002628	0.000343	0.000571	0.029597
326.25-348.75	0.021483	0.009370	0.013370	0.004114	0.001714	0.000343	0.050394
Total	0.434693	0.217118	0.223860	0.049937	0.004000	0.001028	0.930636

Frequency of Calm Winds: 6.94%
 Average Wind Speed: 2.84 m/s

Station ID: 70986
 Year: 1999
 Date Range: janv. 1 - déc. 31
 Time Range: 00:00 - 23:00

Run ID:

Frequency Distribution
 (Normalized)

	Flow Vector (Blowing To) / Wind Speed (m/s)						Total
	0.5 - 2.1	2.1 - 3.6	3.6 - 5.7	5.7 - 8.8	8.8 - 11.1	>= 11.1	
348.75-11.25	0.024929	0.017839	0.038536	0.023442	0.002744	0.000000	0.107490
11.25-33.75	0.034877	0.032476	0.035334	0.010177	0.000915	0.000000	0.113779
33.75-56.25	0.032590	0.029160	0.024471	0.005489	0.000457	0.000000	0.092167
56.25-78.75	0.018639	0.013608	0.020698	0.004345	0.000114	0.000000	0.057404
78.75-101.25	0.026529	0.014180	0.020926	0.003888	0.000000	0.000000	0.065523
101.25-123.75	0.020812	0.013836	0.019211	0.002744	0.000000	0.000000	0.056604
123.75-146.25	0.018982	0.019554	0.036364	0.011778	0.000343	0.000000	0.087021
146.25-168.75	0.014294	0.015437	0.039565	0.012579	0.001715	0.000114	0.083705
168.75-191.25	0.016123	0.013951	0.028016	0.015666	0.001487	0.000457	0.075700
191.25-213.75	0.010520	0.010978	0.015780	0.009034	0.000686	0.000229	0.047227
213.75-236.25	0.008919	0.007776	0.009949	0.001372	0.000229	0.000000	0.028245
236.25-258.75	0.004688	0.004574	0.005832	0.000800	0.000000	0.000000	0.015895
258.75-281.25	0.005718	0.003316	0.005718	0.000800	0.000000	0.000000	0.015552
281.25-303.75	0.004117	0.002287	0.004688	0.000915	0.000000	0.000000	0.012007
303.75-326.25	0.007433	0.004345	0.008348	0.004460	0.000572	0.000000	0.025157
326.25-348.75	0.012579	0.009834	0.020354	0.017724	0.002173	0.000000	0.062664
Total	0.261750	0.213150	0.333791	0.125214	0.011435	0.000800	0.946141

Frequency of Calm Winds: 5.39%
 Average Wind Speed: 3.72 m/s

Station ID: 70986
 Year: 2000
 Date Range: janv. 1 - déc. 31
 Time Range: 00:00 - 23:00

Run ID:

Frequency Distribution
 (Normalized)

Flow Vector (Blowing To) / Wind Speed (m/s)

	0.5 - 2.1	2.1 - 3.6	3.6 - 5.7	5.7 - 8.8	8.8 - 11.1	>= 11.1	Total
348.75-11.25	0.027107	0.021526	0.036446	0.019932	0.000569	0.000228	0.105809
11.25-33.75	0.028360	0.026993	0.038155	0.010137	0.001595	0.000000	0.105239
33.75-56.25	0.027904	0.019704	0.027221	0.006720	0.000000	0.000000	0.081549
56.25-78.75	0.015490	0.014692	0.018337	0.003417	0.000228	0.000114	0.052278
78.75-101.25	0.021412	0.013781	0.013440	0.000797	0.000000	0.000000	0.049431
101.25-123.75	0.021754	0.017426	0.019248	0.003303	0.000000	0.000000	0.061731
123.75-146.25	0.024601	0.023349	0.046355	0.010364	0.000114	0.000114	0.104897
146.25-168.75	0.016401	0.018793	0.041913	0.014465	0.000342	0.000000	0.091913
168.75-191.25	0.019248	0.012073	0.028474	0.017198	0.002164	0.000342	0.079499
191.25-213.75	0.012642	0.009909	0.019248	0.007175	0.000797	0.000000	0.049772
213.75-236.25	0.009567	0.006834	0.008656	0.000911	0.000000	0.000000	0.025968
236.25-258.75	0.006606	0.003645	0.004214	0.000456	0.000000	0.000000	0.014920
258.75-281.25	0.005125	0.003417	0.002961	0.000342	0.000000	0.000000	0.011845
281.25-303.75	0.003872	0.005695	0.005809	0.001025	0.000000	0.000000	0.016401
303.75-326.25	0.008200	0.006720	0.011390	0.005239	0.000114	0.000000	0.031663
326.25-348.75	0.012415	0.010478	0.017768	0.013440	0.001595	0.000000	0.055695
Total	0.260706	0.215034	0.339636	0.114920	0.007517	0.000797	0.938610

Frequency of Calm Winds: 6.14%
 Average Wind Speed: 3.65 m/s

Station ID: 70986
 Year: 2001
 Date Range: janv. 1 - déc. 31
 Time Range: 00:00 - 23:00

Run ID:

Frequency Distribution
 (Normalized)

Flow Vector (Blowing To) / Wind Speed (m/s)

	0.5 - 2.1	2.1 - 3.6	3.6 - 5.7	5.7 - 8.8	8.8 - 11.1	>= 11.1	Total
348.75-11.25	0.022540	0.022540	0.036270	0.019222	0.000686	0.000343	0.101802
11.25-33.75	0.027689	0.034325	0.046796	0.012586	0.000801	0.000114	0.122311
33.75-56.25	0.028032	0.022769	0.031350	0.005149	0.000343	0.000458	0.088101
56.25-78.75	0.014302	0.013730	0.020023	0.002975	0.000686	0.000000	0.051716
78.75-101.25	0.022426	0.017735	0.014760	0.002059	0.000229	0.000000	0.057208
101.25-123.75	0.022654	0.014531	0.015103	0.003089	0.000000	0.000000	0.055378
123.75-146.25	0.022311	0.024027	0.045538	0.009497	0.000458	0.000000	0.101831
146.25-168.75	0.014531	0.016934	0.041533	0.011098	0.000343	0.000000	0.084439
168.75-191.25	0.013730	0.011785	0.025629	0.011327	0.001487	0.000229	0.064188
191.25-213.75	0.010412	0.009497	0.017506	0.006751	0.001259	0.000114	0.045538
213.75-236.25	0.010641	0.005034	0.008124	0.001487	0.000114	0.000000	0.025400
236.25-258.75	0.008124	0.003432	0.004577	0.000000	0.000000	0.000000	0.016133
258.75-281.25	0.006064	0.002632	0.004233	0.000343	0.000000	0.000000	0.013272
281.25-303.75	0.006178	0.003661	0.006636	0.000686	0.000000	0.000000	0.017162
303.75-326.25	0.007666	0.007094	0.014760	0.009497	0.001802	0.000229	0.040847
326.25-348.75	0.009611	0.008352	0.022426	0.019108	0.004005	0.001373	0.064874
Total	0.246911	0.218078	0.355263	0.114874	0.012014	0.002860	0.950000

Frequency of Calm Winds: 5.00%
 Average Wind Speed: 3.75 m/s