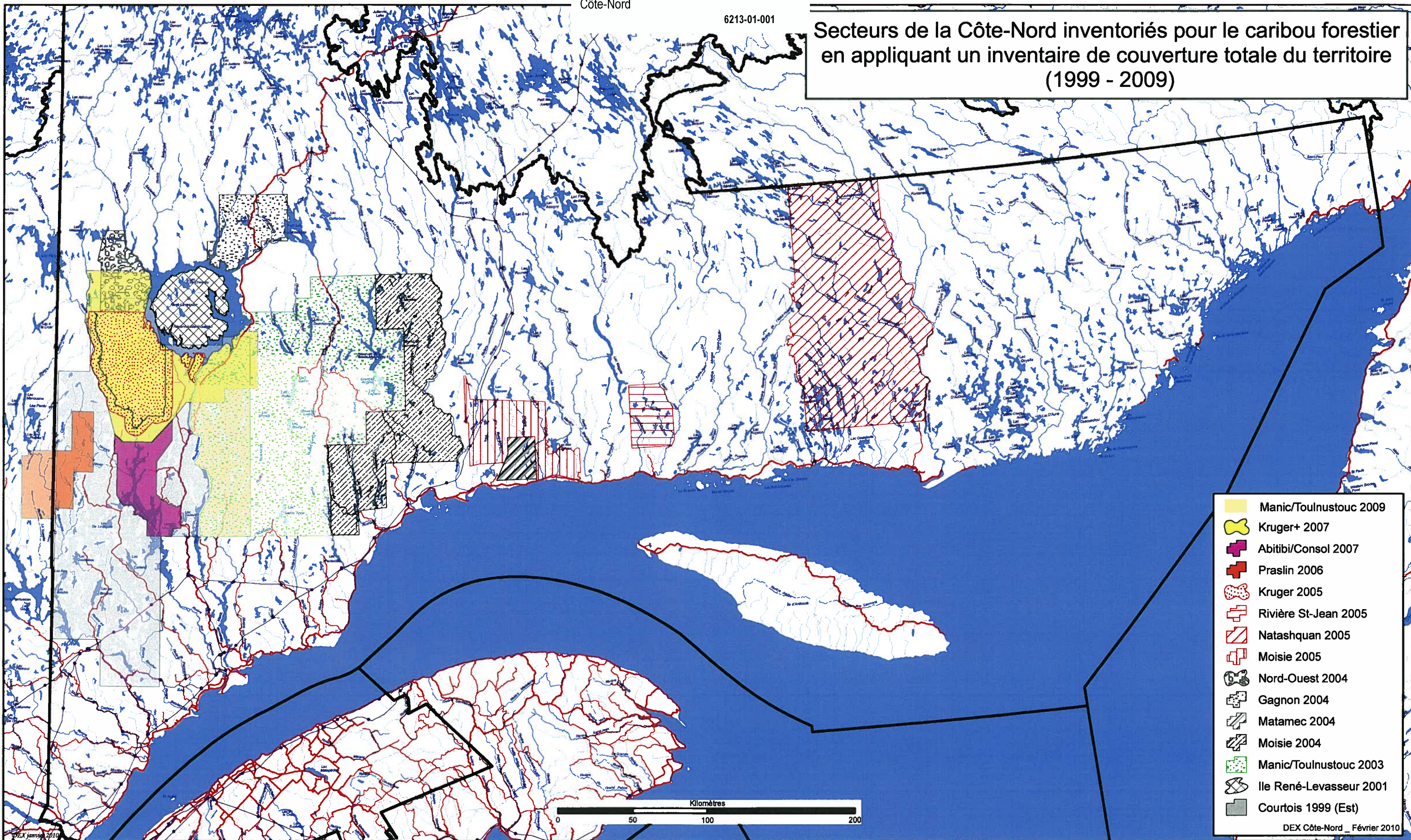


6213-01-001

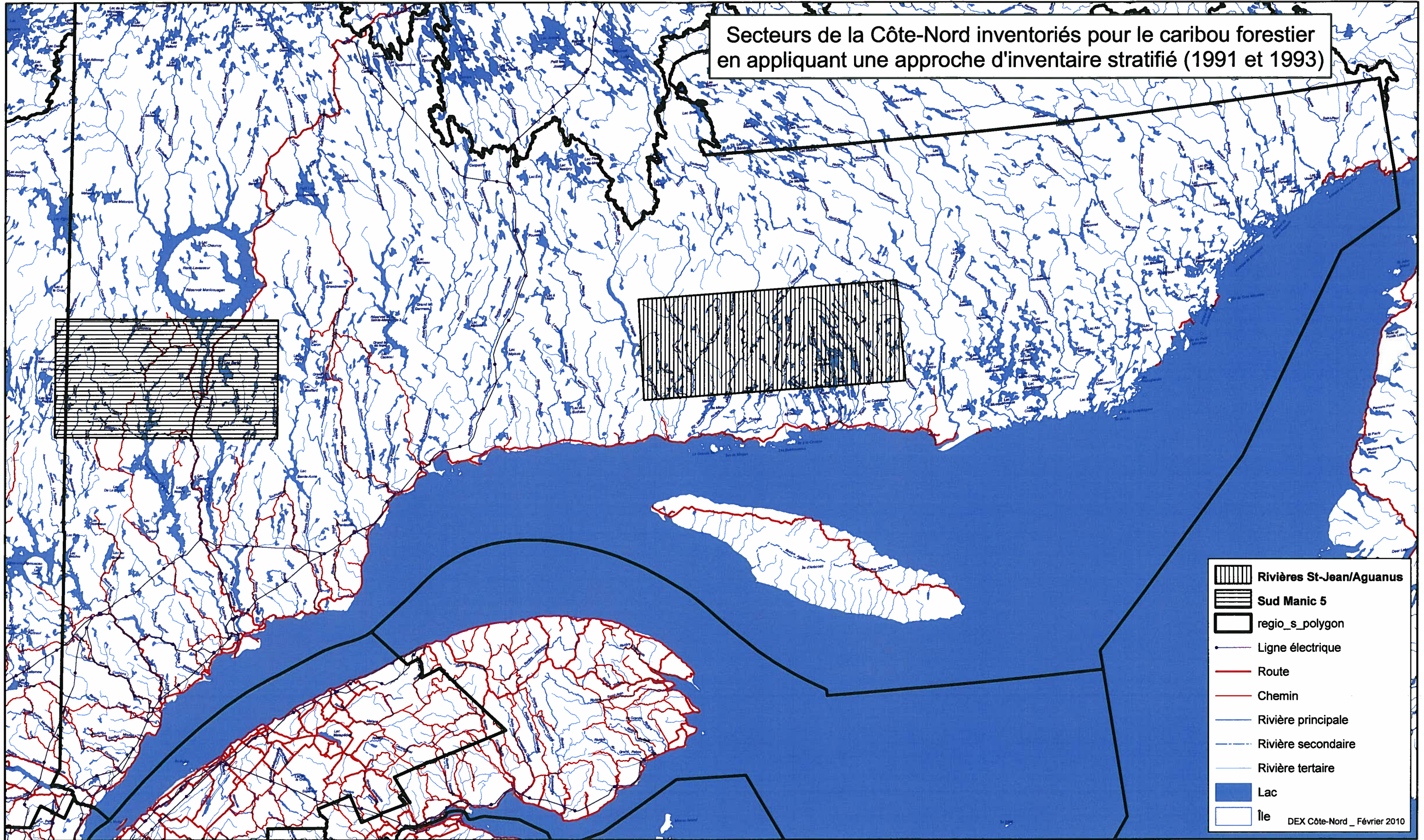
Secteurs de la Côte-Nord inventoriés pour le caribou forestier en appliquant un inventaire de couverture totale du territoire (1999 - 2009)














- Manic/Toulousteuc 2009
- Kruger+ 2007
- Abitibi/Consol 2007
- Prasin 2006
- Kruger 2005
- Rivière St-Jean 2005
- Natashquan 2005
- Moisie 2005
- Nord-Ouest 2004
- Gagnon 2004
- Matamec 2004
- Moisie 2004
- Manic/Toulousteuc 2003
- Ile René-Levasseur 2001
- Courtois 1999 (Est)



Secteurs de la Côte-Nord inventoriés pour le caribou forestier en appliquant une approche d'inventaire stratifié (1991 et 1993)



-  Rivières St-Jean/Aguanus
  -  Sud Manic 5
  -  regio\_s\_polygon
  -  Ligne électrique
  -  Route
  -  Chemin
  -  Rivière principale
  -  Rivière secondaire
  -  Rivière tertiaire
  -  Lac
  -  Île
- DEX Côte-Nord \_ Février 2010