

THE CREE MINERAL
**EXPLORATION
BOARD**



CONSEIL CRI SUR
**L'EXPLORATION
MINÉRALE**

308

INFO1

Les enjeux de la filière uranifère au Québec

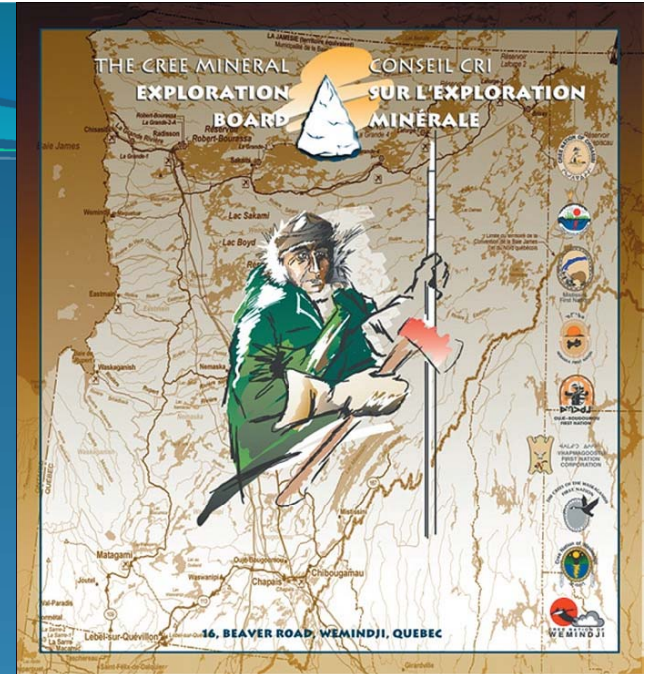
6211-08-012

CMEB
Cree Mineral Exploration Board
Cree Government Entity

Jack R. Blacksmith, President
Alfred Loon
Jimmy Macleod
Reggie Mark
Robert Giguère

HISTORY OF THE CMEB

- Created in 2002 pursuant to Chapter 5 of the Agreement Concerning a New Relationship between the Government of Québec and the Crees of Québec;
- The CMEB is a not for profit Cree Government organization incorporated under the Law of Québec;
- The head office on Category 1A Lands of Wemindji, the CMEB as also a satellite office in Mistissini;
- The Grand Council of the Crees and the Cree Regional Authority are the members of the CMEB;
- The Board of Directors is composed of 5 Directors appointed by the Members; however, one Director is recommended by the Government of Québec;



Principal Objectives

- Encourage the Cree communities to become more involved in mineral development;
- Encourage and develop the out coming of Cree prospectors;
- Foster the training of a specialized Cree workforce;
- Develop within the Cree communities reputable expertise;
- Promote the emergence of Cree entrepreneurship;
- Integrate Crees into the various mineral exploration activities carried out in the territory;
- Promote the creation of Cree enterprises involved in mineral exploration and related fields;
- Promote a more thorough assessment of the region's mineral potential through geological research and mapping activities;



PROGRAMS

AWARNNESS & PROMOTIONAL ACTIVITIES

- The purpose of this program is to organize and fund activities which increase awareness among Crees on mineral exploration and which promote the mineral potential of Eeyou Istchee;
- Among others: production of pamphlets and posters, attendance or organization of conferences, «mining 101 courses», CMEB's website, rock competition contest, participation in career fairs in Cree schools;

Training and Employment Assistance



- Field prospector training program for Crees on Category 1 lands of Eeyou Istchee;
- Facilitate hiring of competent Crees in the mining sector or related sector;
- Involve with the Cree Human Resources Department of the CRA, the Cree School Board, the mining industry and Government agencies to develop adult training programs and college degree in environment;
- Presentations in Cree schools and field excursions with Cree youth to promote Earth Sciences;
- Workshops with community members to provide explanations about the mining industry;

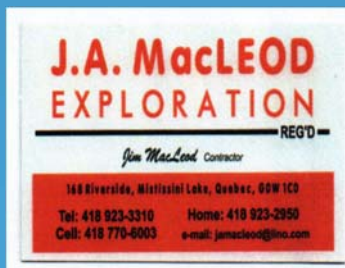
Assistance to Prospectors



- Provide financial assistance to Cree prospectors for grass root exploration campaign;
- Eligible work: prospecting, stripping, trenching, blasting, sampling, analysis, line cutting, geology, geophysics, geochemistry, drilling, rental of equipment, transportation and subsistence expenses in the field, operating supplies, wages, as well as fees for acquiring mining titles;
- Technical assistance of CMEB's geologist during all phases of the project

Assistance to Entrepreneurs

- Funding of exploration projects submitted by Cree owned exploration companies or partnerships and joint ventures between Cree companies and non-native entities;
- Eligible expenditures include: geology, geophysics, geochemistry, prospecting, sampling, analysis, drilling, and other related work;
- Funding agreement with Cree entity provides for a 1% royalty in favor of the CMEB;



Expertise in Earth Science & Technical Assistance

- Electronic and interactive geo-economic map of Eeyou Istchee is updated regularly with the most recent information gathered by the CMEB, the MNR and the industry; (www.cmeb.org/geoeco);
- Collaboration with various universities and other institutions to increase knowledge of Eeyou Istchee's mineral potential;
- Technical expertise provided to the GCC(EI), the CRA the Cree Trappers' Association and all Cree nations in the mineral exploration fields;

CMEB Collaborations

CTA-Tallymen

- CTA-Tallyman
- CHRD
- CSB
- CHB
- The Communities
- MERN Quebec
- Canadian Universities
- TJCM
- SDBJ
- Museums
(Ouje-Bougoumou & Malartic ...)

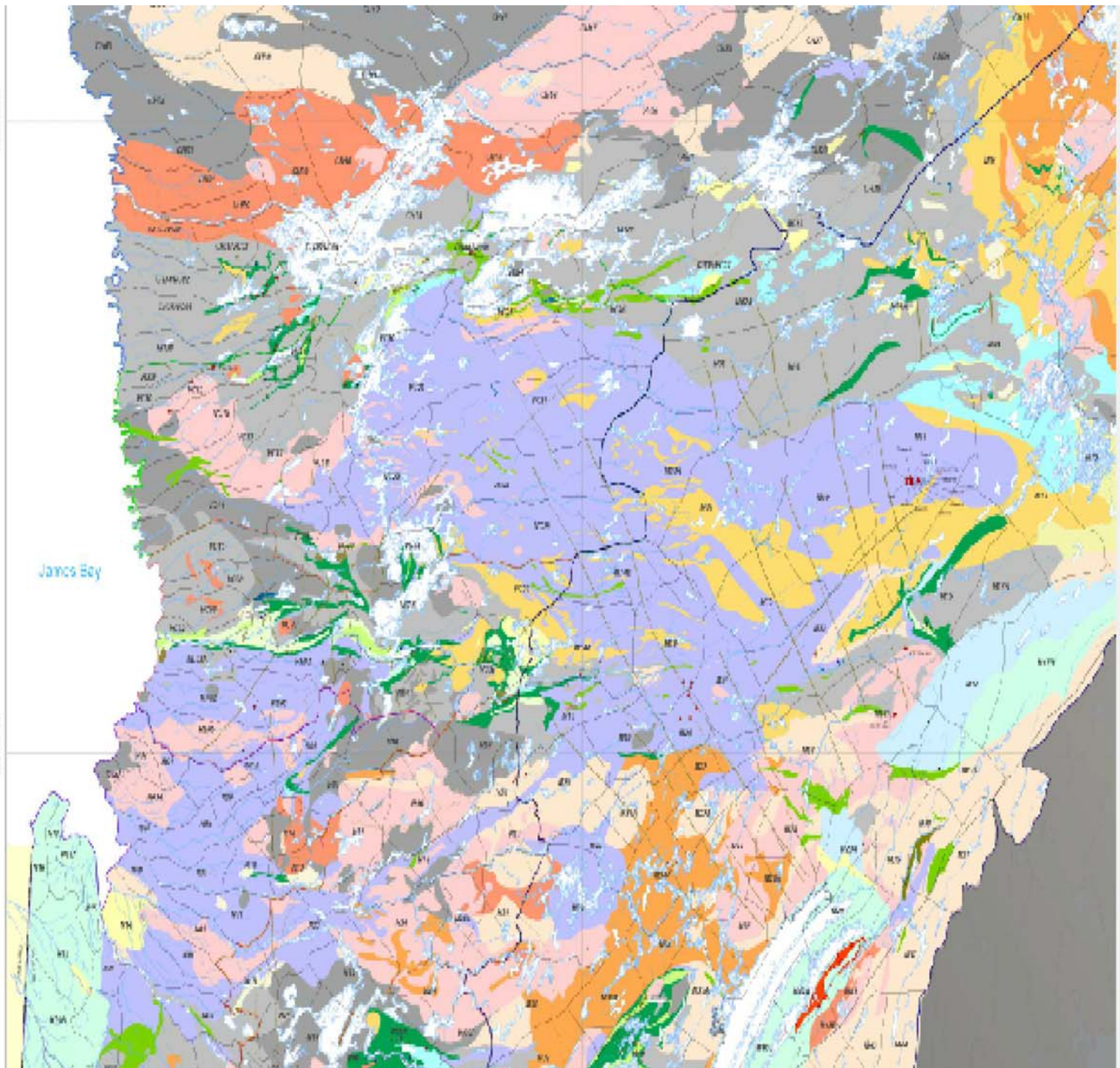


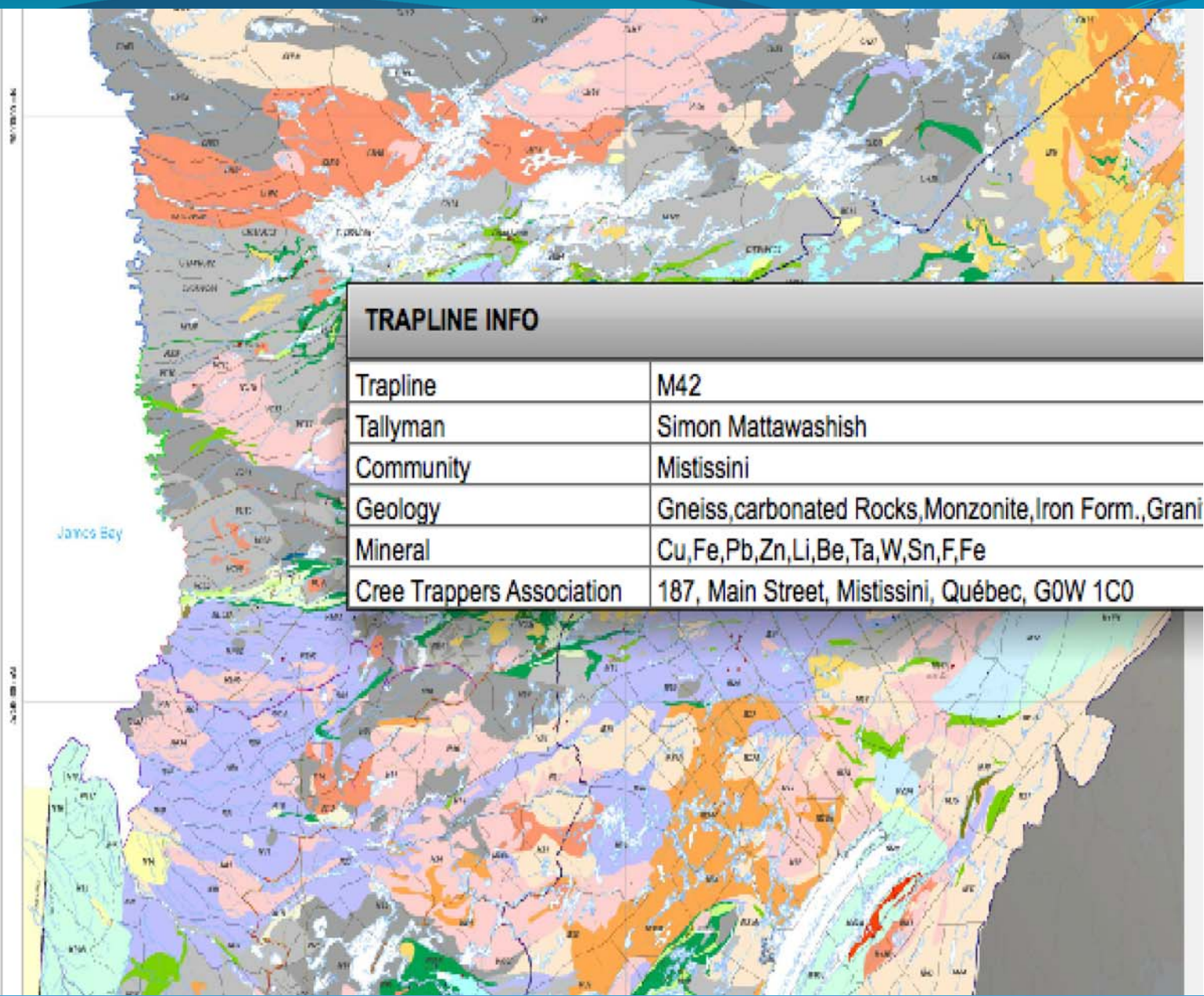


1000 METERS

1000 METERS

James Bay

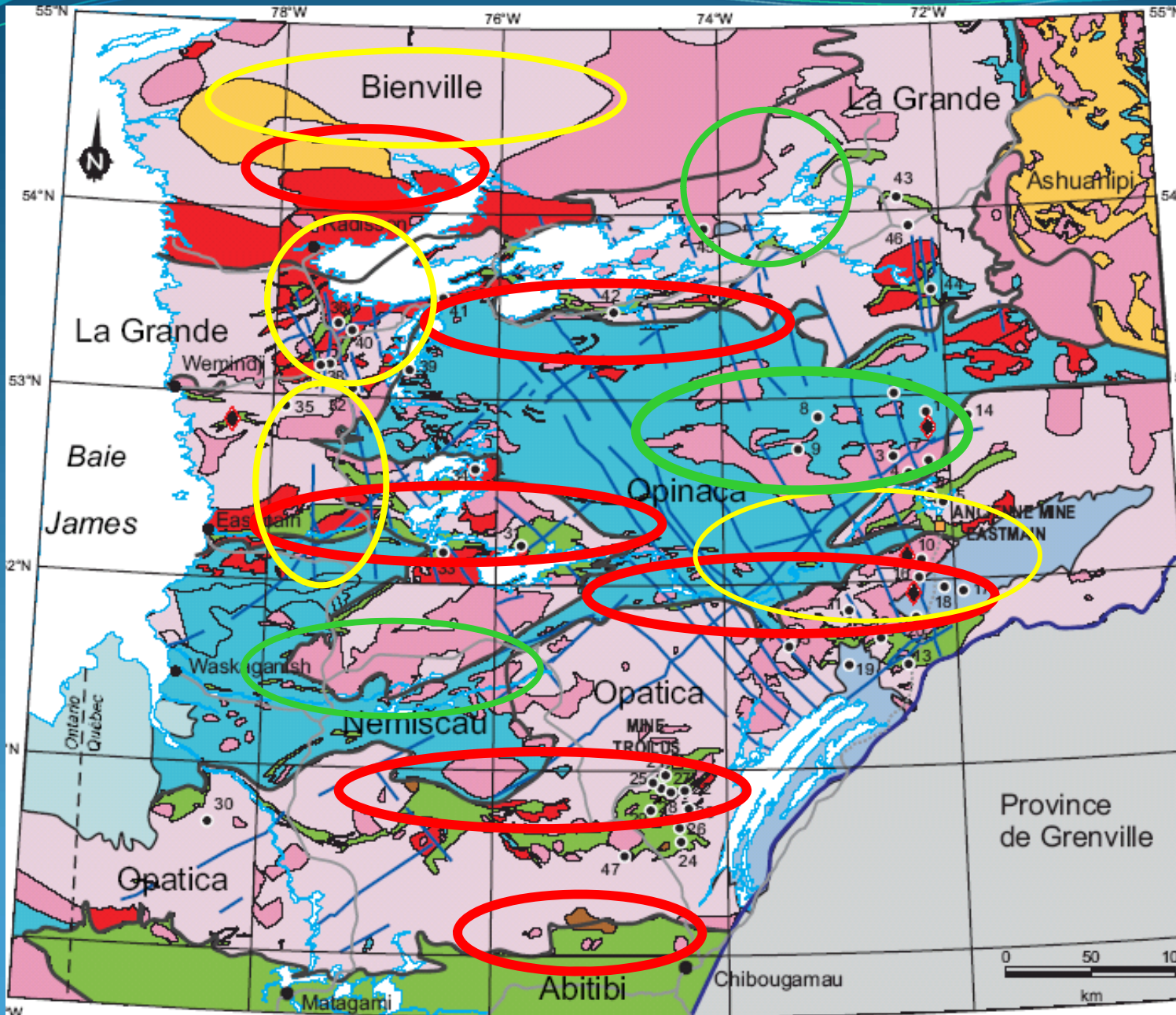




TRAPLINE INFO

Trapline	M42
Tallyman	Simon Mattawashish
Community	Mistissini
Geology	Gneiss, carbonated Rocks, Monzonite, Iron Form., Grani
Mineral	Cu, Fe, Pb, Zn, Li, Be, Ta, W, Sn, F, Fe
Cree Trappers Association	187, Main Street, Mistissini, Québec, G0W 1C0

Eyou Istchee Mineral Resources



Au
Cu
Ag
U
Ni
Co
PGE
REE
RM



Highlights: *Chisasibi*

- **AUGYVA MINING RESOURCES INC. / CENTURY IRON MINES CORP.:** 25.55% FeT (total iron) over 321.25 metres.
- Updated NI-43-101 compliant resources estimate defines 1.05 billion tonnes of Measured and Indicated at a grade of 24.4% Fe and Inferred resources of 563 million tonnes at a grade of 24.7% Fe on DUNCAN on traplines CH-36/VC-04 and CH-37/VC-05.
- **VIRGINIA MINES INC.:** 11.06% Zn, 1.87% Cu, 26.45 g/t Ag over 11 metres on COULON property on CH-30 and CH-31.

<i>Substance</i>	<i>Number projects</i>
Gold	18
Silver	7
Base metals	12
Diamonds	3
Platinum group elements	3
Uranium	6
Lithium	0
Rare earth elements	0
Iron	1

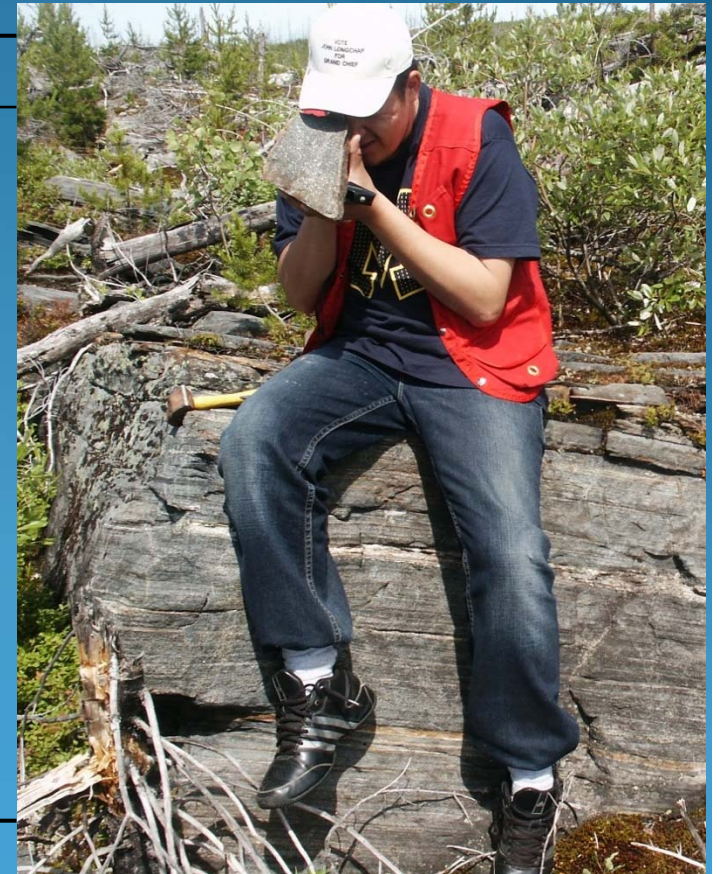




Highlights: *Eastmain*

- **EASTMAIN RESOURCES INC.:** 66.5 g/t Au over 0.5 meter and 38.4 g/t Au over 2.0 meters including a half-meter interval of 150 g/t Au on CLEARWATER property on Trapline VC-37.

<i>Substance</i>	<i>Number of projects</i>
Gold	18
Silver	3
Base metals	3
Diamonds	0
Platinum group elements	0
Uranium	1
Lithium	3
Rare earth elements	1
Iron	0

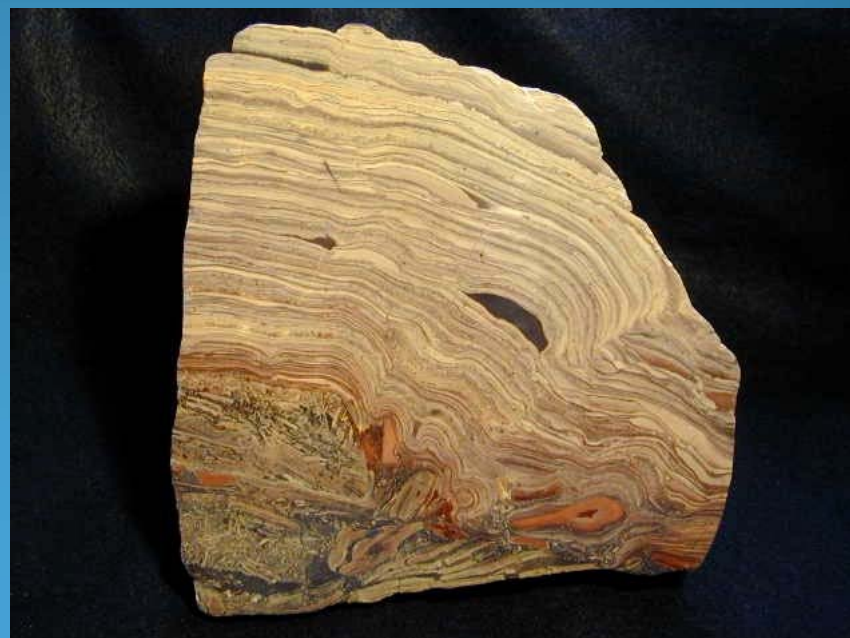


. Highlights: Mistissini



- **EASTMAIN RESOURCES:** 5.78 - 9.10 g/t Au
EASTMAIN MINE on Trapline M-16.
- **HABANERO RESOURCES INC.:** 2,060 g/t Zn; 1 % Cu LEZAI project
traplines M-39, M-41.
- **STORNOWAY** Signs IBA with Mistissini, GCC-CRA on RENARD Diamond
project on Trapline M-11.
- **STRATECO.:** 2.04 million tonnes 3.62% U₃O₈ on traplines M-16, M-17, M-
17C, M-24A.

<i>Substance</i>	<i>Nb of projects</i>
Gold	29
Silver	7
Base metals	18
Diamonds	6
Platinum group elements	2
Uranium	21
Lithium	2
Rare earth elements	1
Iron	0



Highlights: *Nemaska*

NEMASKA LITHIUM INC.:

WHABOUCHI lithium
project on traplines
R-18 and R-20.

Also Cu, Ni, Cr, Co, Pb, Zn molybdenum



<i>Substance</i>	<i>Number of projects</i>
Gold	2
Silver	0
Base metals	3
Diamonds	0
Platinum group elements	2
Uranium	0
Lithium	1
Rare earth elements	1
Iron	0



Highlights: *Ouje-Bougoumou*

- **BLACKROCK METALS INC.:** Proceed with advanced exploration on the BLACK ROCK Project on O-57 and O-59.
- **CARTIER RESOURCES INC.:** 13.3 G/T Au on DOLLIER project on O-59.
- **COGITORE RESOURCES INC.:** 2.7% Cu, 7.0% Zn and 104 g/t Ag SCOTT LAKE project O-58, O-59.
- **TYPHOON EXPLORATION INC.:** 4.55 g/t Au on the MONEXO-McCORKILL project on O-57.

<i>Substance</i>	<i>Number of projects</i>
Gold	25
Silver	1
Base metals	13
Diamonds	0
Platinum group elements	0
Uranium	0
Lithium	0
Rare earth elements	0
Iron	2





Highlights: *Waskaganish*

- **BALMORAL RESOURCES LTD.:** 6.40 to 11.42 g/t Au & 160 g/t Ag on the MARTINIÈRE project on Trapline A-4.
- **CRITICAL ELEMENTS CORP.:** 26.5 millions tonnes 1.30% Li₂O & 163 ppm of Ta₂O₅ on the ROSE project on Trapline R-10.

<i>Substance</i>	<i>Number of projects</i>
Gold	20
Silver	3
Base metals	3
Diamonds	0
Platinum group elements	0
Uranium	0
Lithium	7
Rare earth elements	4
Iron	0



Highlights: *Waswanipi*



- **BONTERRA RESOURCES:** 492,000 ounces Au EASTERN EXTENSION project on Trapline W-25B.
- **CARTIER RESOURCES:** 9.0 g/t Au BENOIST proj. on W-24B.
- **EAGLE HILL EXPLORATION:** 17.3 g/t Au on WINDFALL project on W-25A & W-25B.
- **GEOMEGA RESOURCES:** 3.09% REE Oxides & 0.60% Nb₂O₅ MONTVIEL project on W-11B.
- **METANOR RESOURCES INC.:** 26.36 g/t Au BACHELOR project on W-21 and W-24A. Signs SEPA (Socio-Economic Participation Agreement) with Waswanipi and GCC/CRA.
- **TOMAGOLD:** 237.6 g/t Au MONSTER LAKE proj. on W-23A.

<i>Substance</i>	<i>Number of projects</i>
Gold	48
Silver	4
Base metals	15
Diamonds	1
Platinum group elements	1
Uranium	2
Lithium	0
Rare earth elements	2
Iron	1





Highlights: Wemindji

- **GOLDCORP INC.:** received the Certificate of Authorization from the Quebec Minister of Sustainable Development, Environment and Parks for the construction of the ELEONORE gold mine on Trapline VC-28. Also Cu, Ni, Cr, Co, molybdenum, Pb, Zn. Some projects are multi-elemental.

<i>Substance</i>	<i>Number of projects</i>
Gold	23
Silver	5
Base metals	10
Diamonds	1
Platinum group elements	0
Uranium	7
Lithium	0
Rare earth elements	0
Iron	0





Highlights: *Whapmagoostui*

- The companies are backing up because of the prices decreasing. There is no highlights 2012.
- Project still on: NIOCAN INC., Fe on GREAT WHALE IRON project & VIRGINIA MINES INC. Au on Lac FAGNANT Project
- Number of projects carry out Cu, Ni, Zn. metals

<i>Substance</i>	<i>Number of projects</i>
Gold	1
Silver	0
Base metals	0
Diamonds	1
Platinum group elements	0
Uranium	0
Lithium	0
Rare earth elements	0
Iron	1



Cree Nation Government

Cree
First
Nations

Cree
Regional
Services

Cree
Business
Enterprises

Cree Nation Mining Policy



Cree Nation Mining Policy



- The CMEB was actively involved in the development of this policy which is founded on the three following pillars:
 - Promotion and Support of Mining Activities;
 - Mining and Sustainable Practices; &
 - Transparency and Collaboration

Promotion and Support of Mining Activities

- The Crees support and promote the development of Mining as part of their approach to Natural Resource Management and as a tool for social and economic development.
- The Cree Government ensures the protection of rights, interests and benefits of all Crees collectively over their lands and resources to be impacted by proposed mining projects.
- The Cree Government acknowledges and endorses the principles of allocation and acquisition of mineral rights and the corollary right to develop the mineral resources, while addressing Cree environmental and social concerns.
- The Cree Government will bring on all their expertise on land and mineral resources management and will bring their technical support through the appropriate land management and geosciences resources to proponents of mining projects who request such support.

Mining and Sustainable Practices

- The Cree Government is committed to sustainable development of the Eeyou Istchee, in accordance with the following principles :
 - Recognition of the importance of the system of Cree family land use and occupation of the territory and their continuing management by tallymen;
 - Administration of natural resources for the needs of the Crees without compromising the needs of future generations;
 - Providing for management of natural resources based on the Cree principle of respect for the land;
 - Balancing ecological, productive, spiritual and traditional values to meet the cultural and economic requirements of all peoples and communities within the Eeyou Istchee territory;
 - Conservation of cultural and spiritual values and traditions as embodied in the land and notably in specially designated sites;
 - Conservation of biological diversity, soils, water and watercourses, flora, fauna, scenic diversity and recreational values;
 - Application of the precautionary principle in all decision-making processes related to natural resources;
 - Restoration of damaged ecosystems.

Mining and Sustainable Practices (Continued)

- The Cree Government seeks to improve the economic, social, environmental, cultural and sustainable development of all Crees and Cree local governments in the context of mining activities on the Territory and to ensure that mining projects contribute not only current benefits but also to the development of longer-term alternative employment and business opportunities in non-mining related sectors, and to the productive use of the land beyond the life of a mine.
- The James Bay and Northern Quebec Agreement provides for an Environmental and Social Protection Regime that is unique to the territory and has proved to be a valuable tool for effectively managing development within the territory.

Transparency and Collaboration

- **Transparency, the Cree Government will:**
 - Support communities that have established direct and close liaisons with mining proponents;
 - Encourage proponents to establish direct and close liaisons with the communities and other Cree entities.
- **Collaboration, the Cree Government:**
 - Will develop and promote collaborative and flexible approaches that respect the vital role of the communities in shared decision-making processes under this Policy;
 - Will ensure that all concerned Cree parties are to be involved as appropriate, at the earliest possible time in any proposed mining activity or mining projects to ensure that Cree rights, interests and benefits are properly protected and promoted;
 - Recognizes and support the principle that Cree involvement in mining projects is fundamental to ensuring that Cree rights are protected and to promote positive relations between all parties.

Support for the Mining Community

- The Cree Government, through the [Cree Mineral and Exploration Board](#) (CMEB), will provide support to the mining community by directing interveners to contacts within the CRA and communities. The mission of the CMEB is to develop mineral exploration in Eeyou Istchee and promote increased involvement of Crees in activities related to the development of natural resources. As part of its mandate, the CMEB assists the Crees in accessing mineral exploration opportunities and facilitates the development of mineral exploration activities by Cree Enterprises

Conclusion

- Over the past 10 years, the CMEB has acquired a solid credibility with junior exploration companies active in Eeyou Istchee and is also a great source of pertinent and reliable information about the mineral industry for various Cree entities and mineral proponents. The CMEB is a dynamic and reputable Cree organization that is proving everyday its purpose which mainly consists into the promotion of the mineral exploration activities in the territory and raise Cree's interest towards these activities.
- CMEB advices and supports the communities towards mining projects, and respects theirs decisions. We work continually with our government in addressing some issues concerning mining

Meegwetch

