

ANNEXE 4

Plans de séparateurs et bassin collecteur

- Séparateur huile/eau du terminal K-1
- Bassin collecteur du terminal K-1
- Séparateur API du terminal K-3

TABLE DES CONNECTIONS

ITEM	DIAM.	QTY.	DESCRIPTION	SERVICE
A	24"	2	TROU-BONNEME FABRIQUE	ACCÈS
B	24"	1	TROU-D'ESCAPE ET REGARD	ACCÈS
C	4"	1	TUYEAU FILETÉ	CARTE D'HUILE
D	3"	2	MANCHON FILETÉ (CA. DÉCAGNE)	ÉVENT
E	8"	1	150° (F.F.) BRIDE À TUYEAU INTERNE	ENTRÉE D'EAU
F	8"	1	150° (F.F.) BRIDE À TUYEAU INTERNE	SORTIE D'EAU
G	8"	1	TUYEAU DE COMMUNICATION	INTERNE

SPECIFICATION DES MATERIAUX

BOUTS ET VIROLES	1/4" F	A-283-C
TUYEAU		A-53-B "UNI"
STRUCTURE		A-36
BOULONS ET ECROUS		A-307
COUDE ET BOUCHON COUDE		A-234-WPB
BRIDE D'ACCOUPLEMENT		A-181-I
JOINT D'ETANCHEITE	1/8" STR.	AMIANTE COMPRESSE

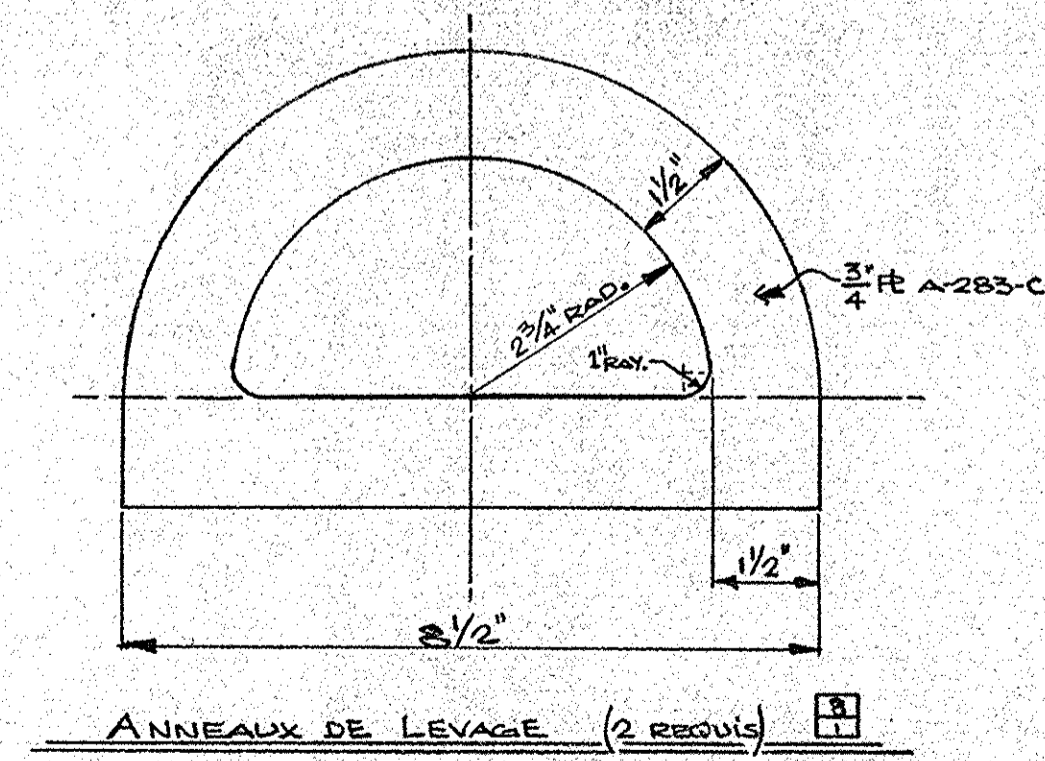
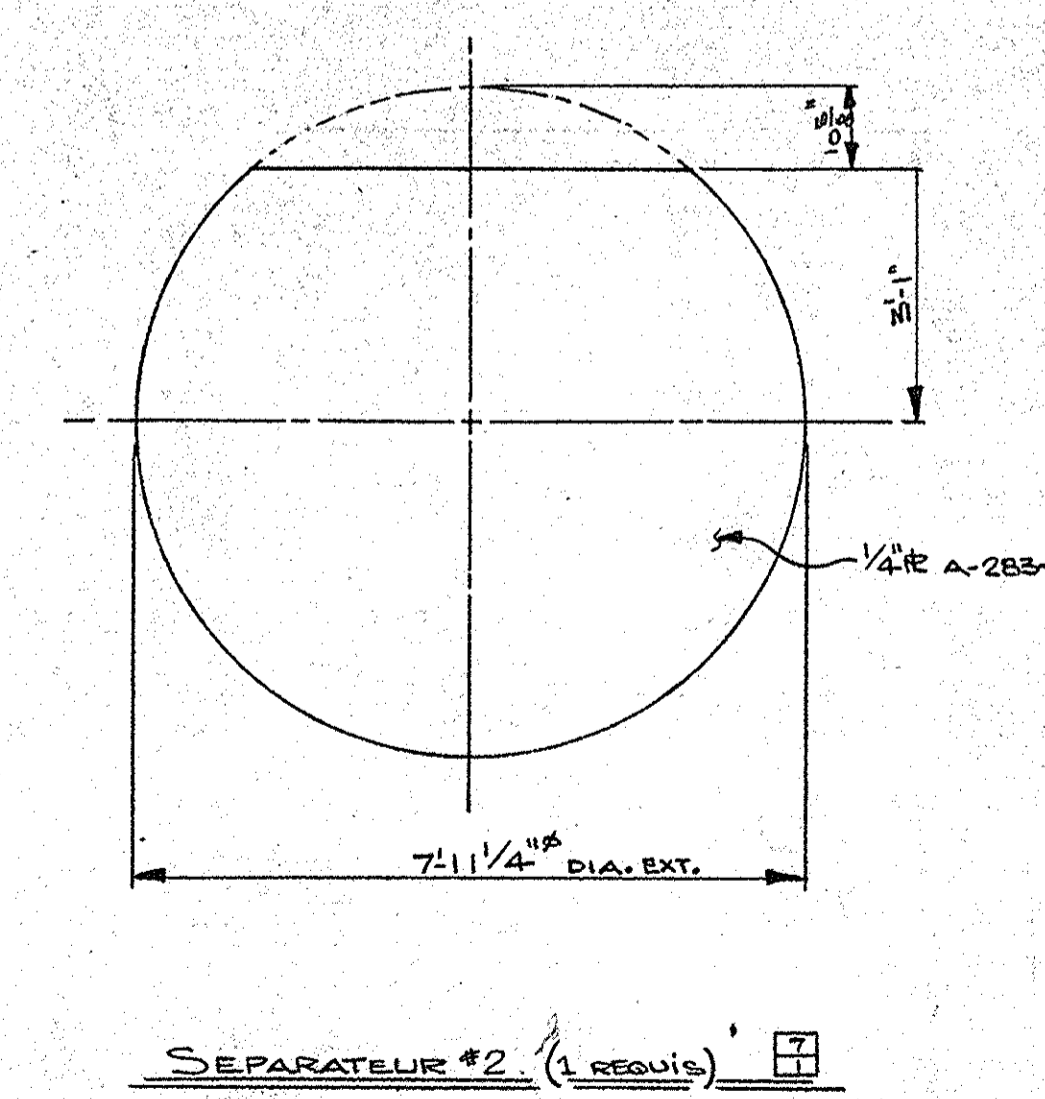
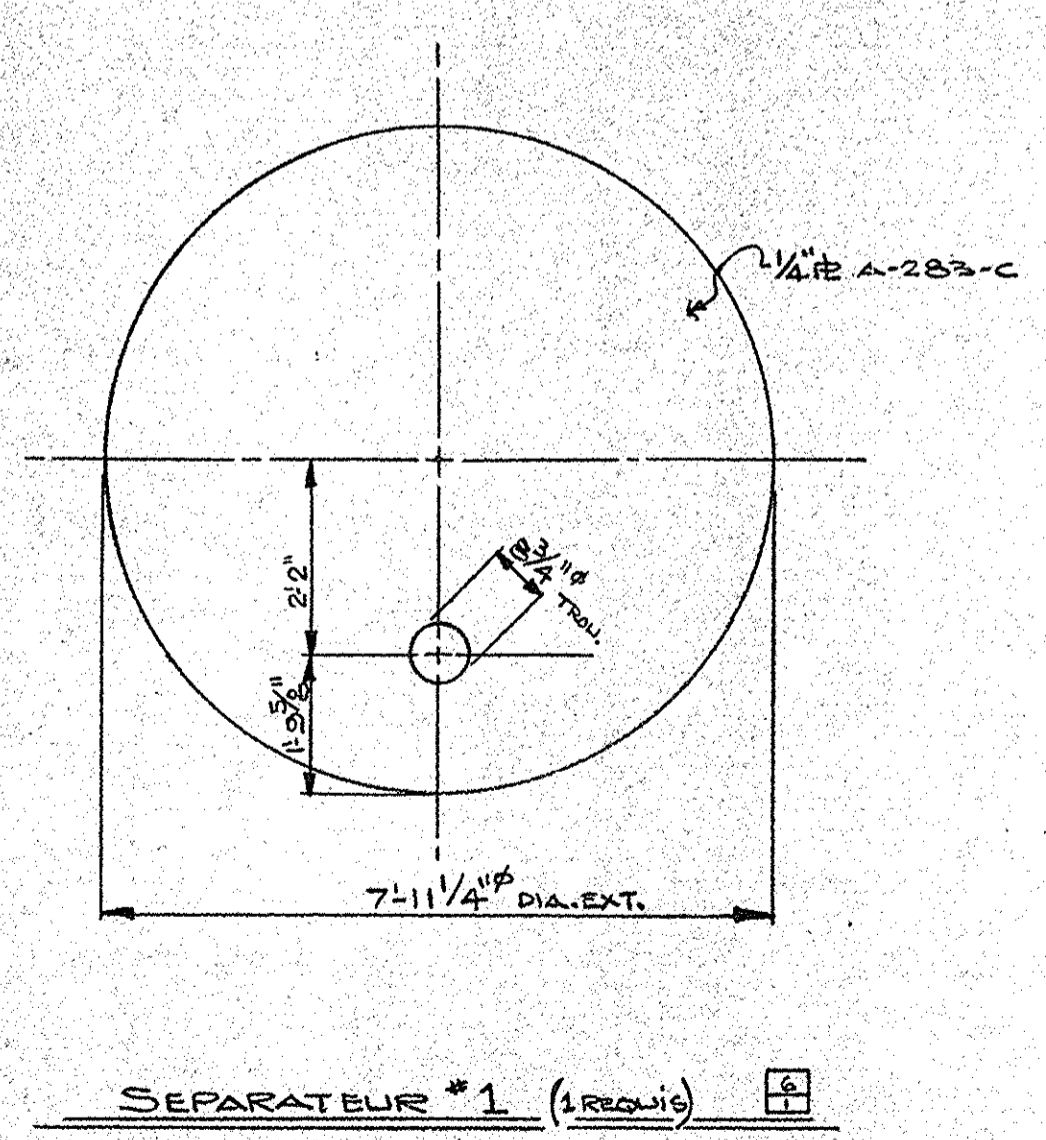
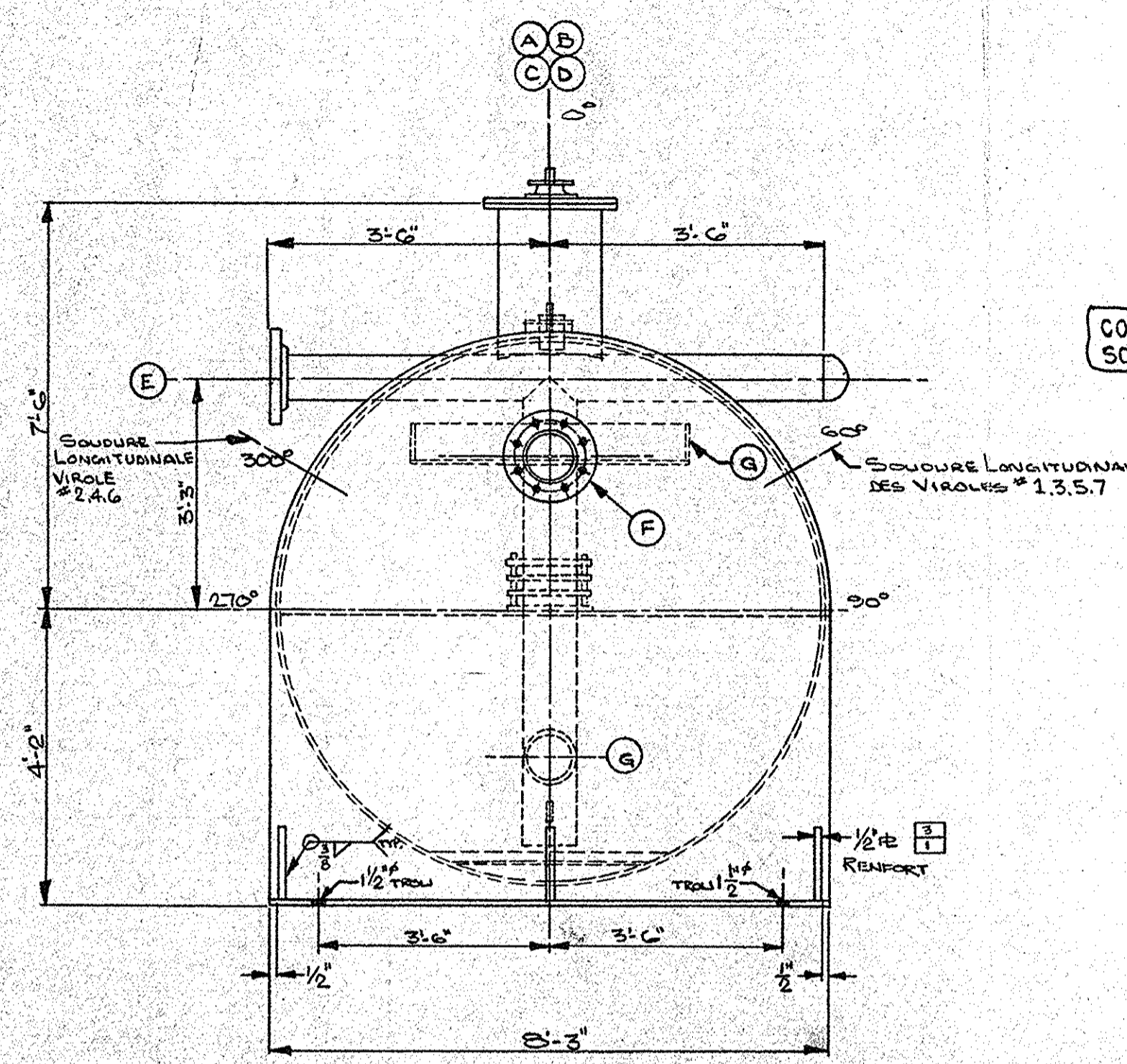
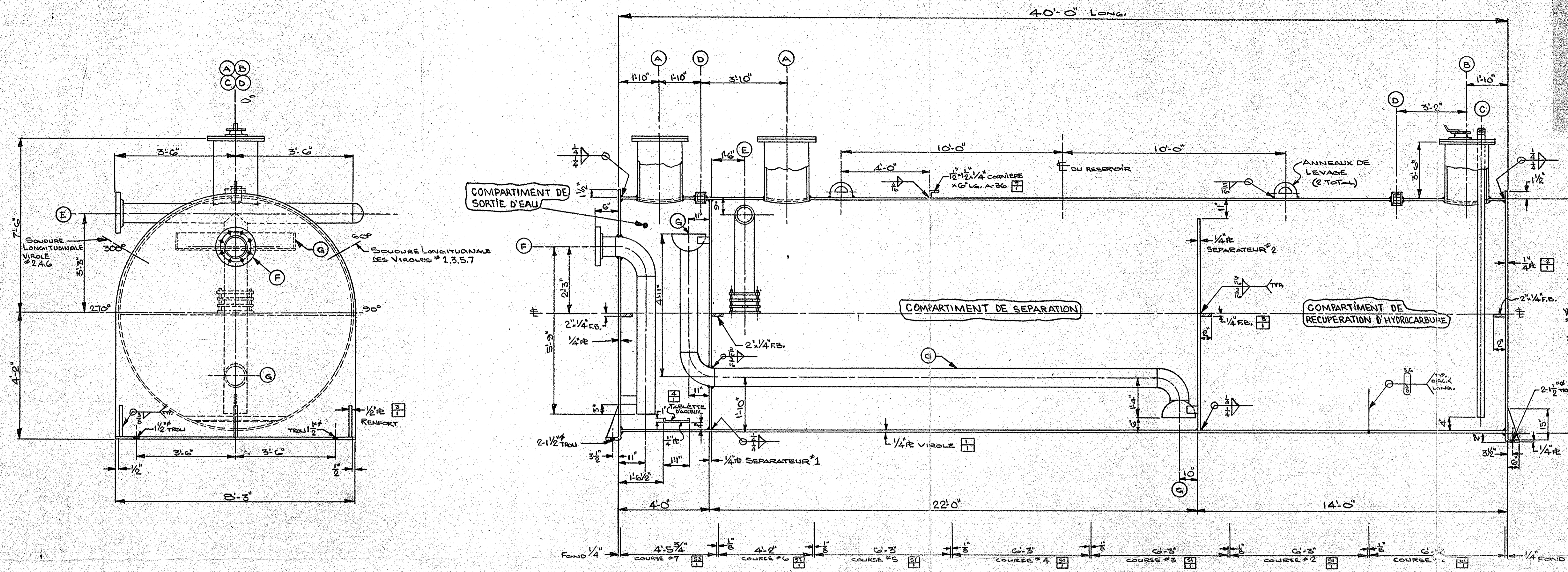
NOTES GENERALES

- 1) L'ETANCHEITE DU RESERVOIR SERA VERIFIEE PAR ESSAI PNEUMATIQUE A 5"PSI.
- 2) TOUTS LES TROUS DE BOULON DES BRIDES DEVONT CHEVAUCHER LES LIGNES D'AXES DU RESERVOIR.

NETTOYAGE ET PEINTURE

INTERIEUR.
L'INTERIEUR DU COMPARTIMENT DE RECUPERATION D'HYDROCARBURES SEULEMENT. TOUTES LES SURFACES INTERIEURES SERONT DECAPÉES PAR SABLAGE SUIVANT "SSPC-SP10" (BLANC) SUIVI DE UNE COUCHE DE BASE "MOBIL" EPOXY BEIGE #78-D-7 (4MILLS) ET UNE COUCHE DE SURFACE "MOBIL" EPOXY-BLANC #78-W-3 (4MILLS). EMPLOYER DILUANT "MOBIL" #7-T-25.

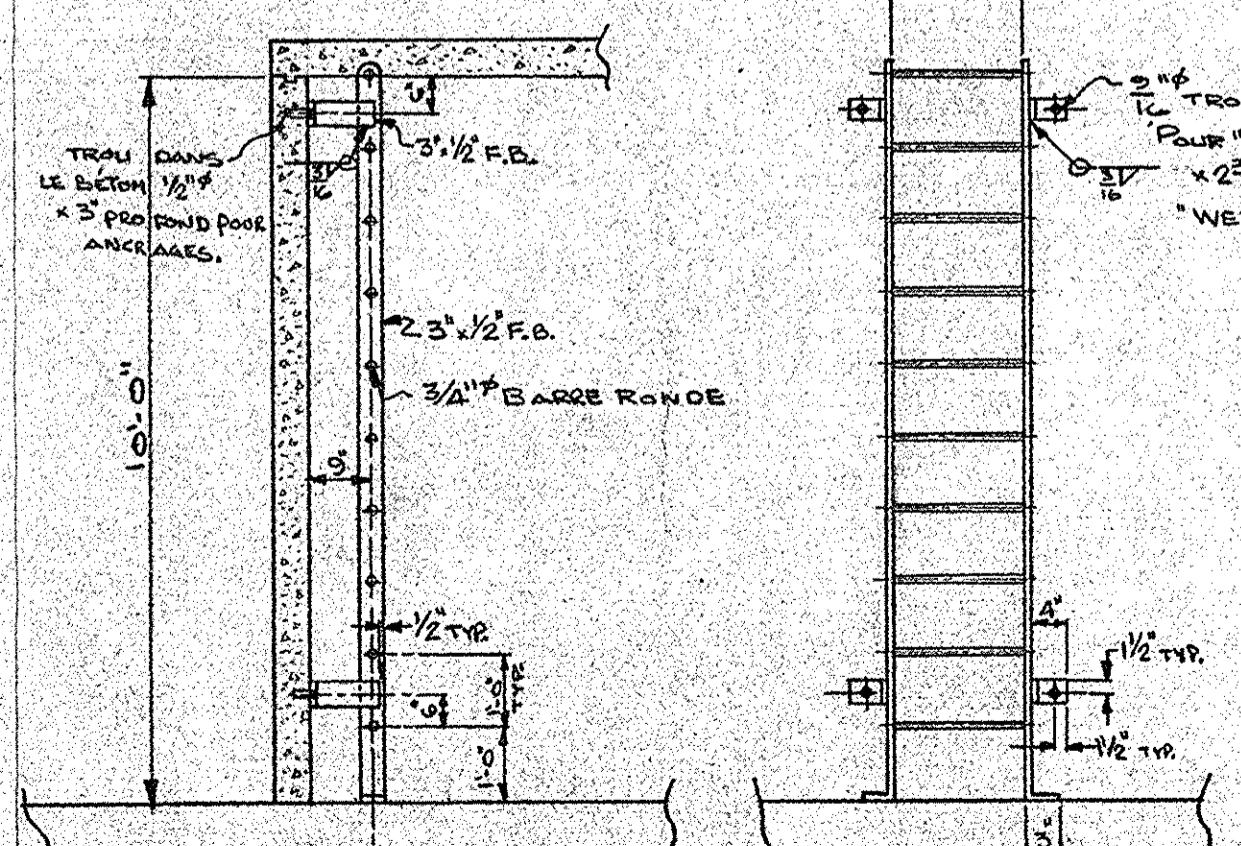
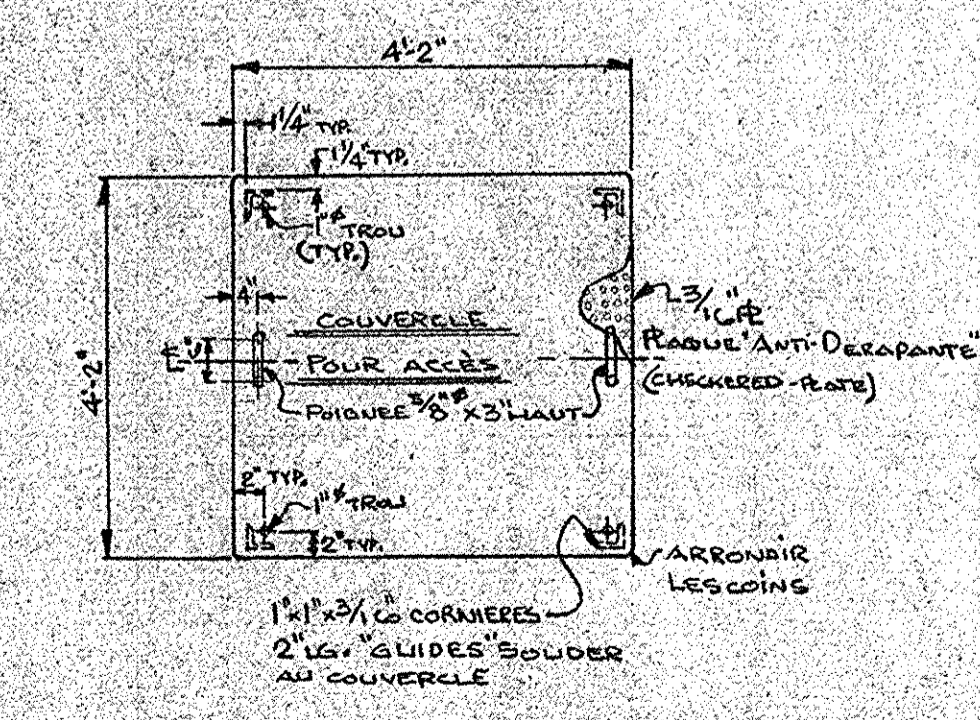
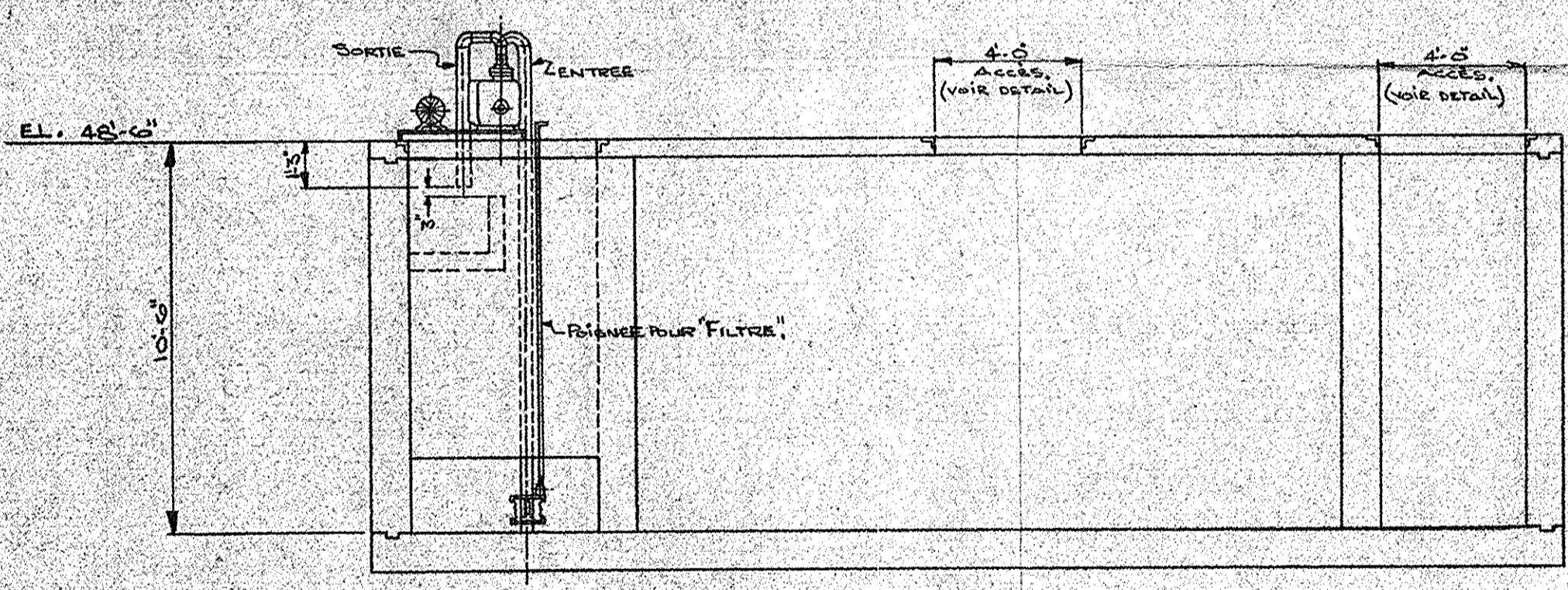
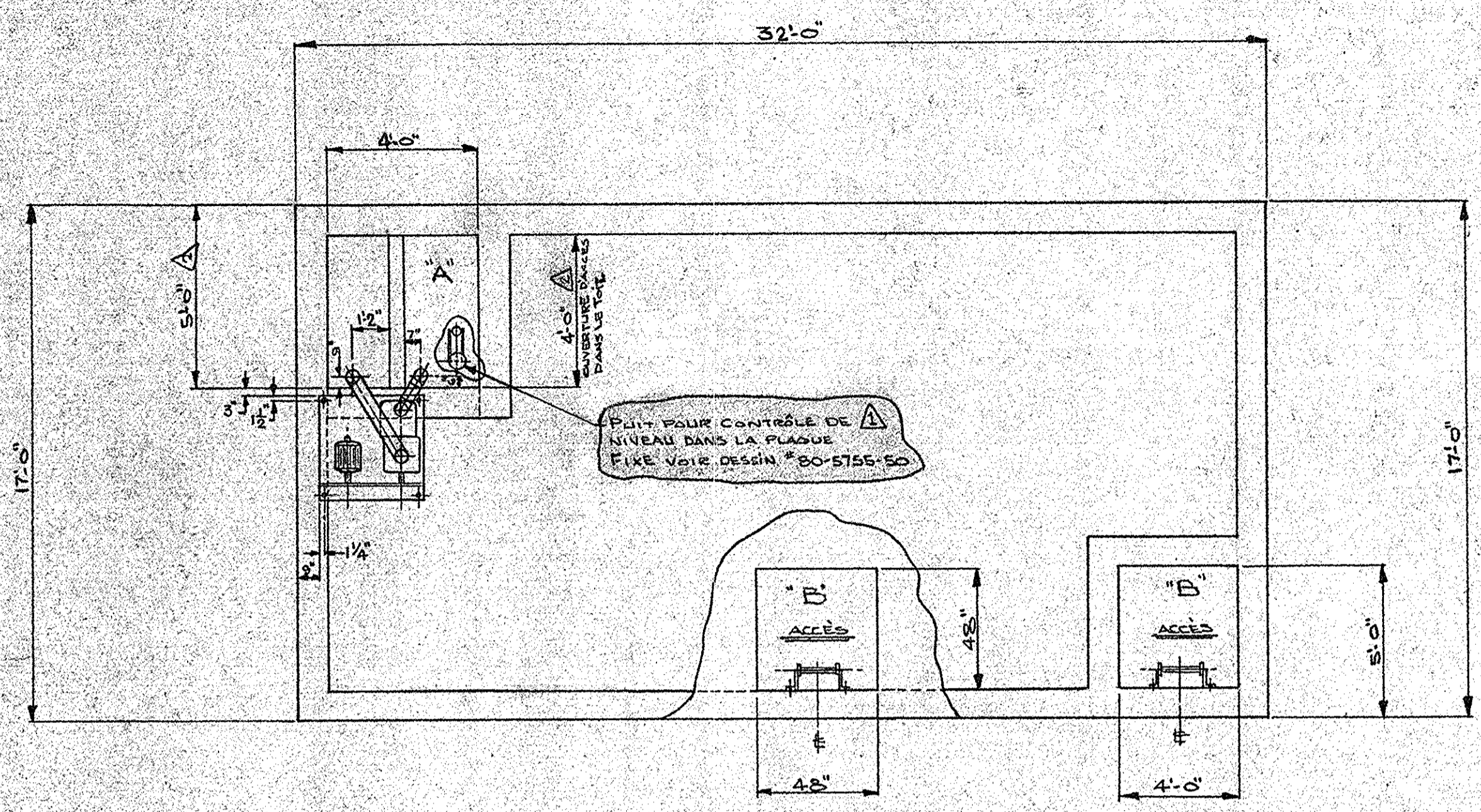
EXTERIEUR.
TOUTES LES SURFACES EXTERIEURES DU "SEPARATEUR" SERONT DECAPÉES PAR SABLAGE SUIVANT "SSPC-SP6" (COMMERCIAL) SUIVI DE UNE COUCHE DE "CROWN TAR EPOXY" BRUN #252-N DE "CROWN DIAMOND COMP." PEINTURE A 2 COMPOSANTES. EPAISSEUR MINIMAL DE 8 A 10 MILLS, APRES SECHAGE.



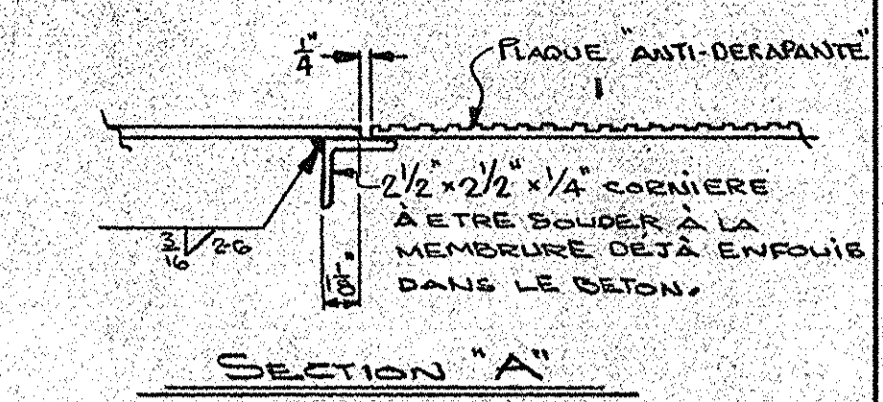
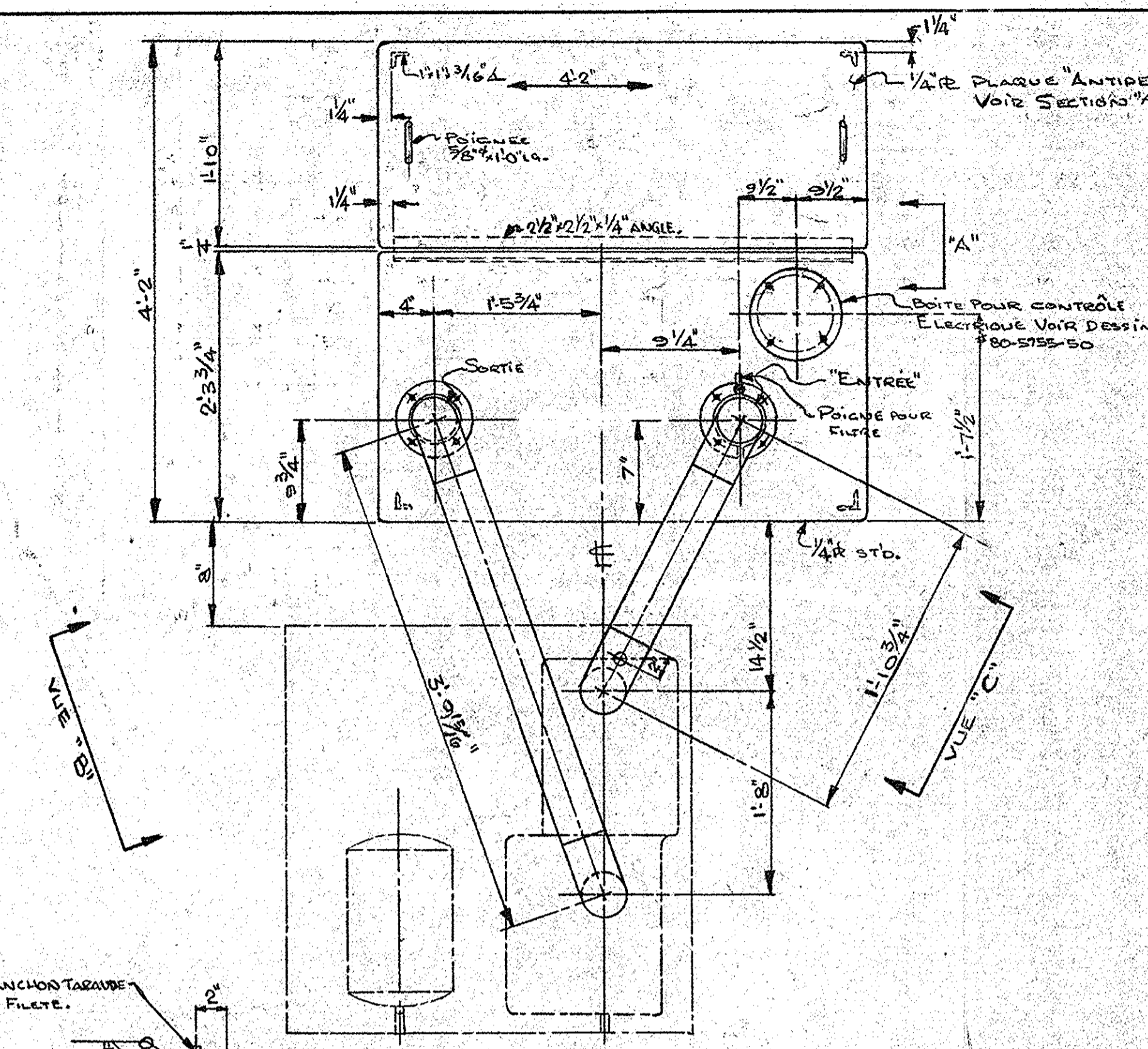
POIDS DU RESERVOIR VIDE : 15.000 #
POIDS DU RESERVOIR REINDEUR : 140.000 #

THIS DRAWING IS THE PROPERTY OF DRUMMOND WELDING & STEEL WORKS LTD. THE INFORMATION AND KNOWHOW HEREON MAY NOT BE USED NOR THE DRAWING REPRODUCED WITHOUT THE WRITTEN PERMISSION OF DRUMMOND WELDING & STEEL WORKS LTD. ALL REPRODUCTIONS IN WHOLE OR IN PART INCLUDING VENDOR'S SHOP DRAWINGS, SHALL BEAR OR REFER TO THIS STAMP.

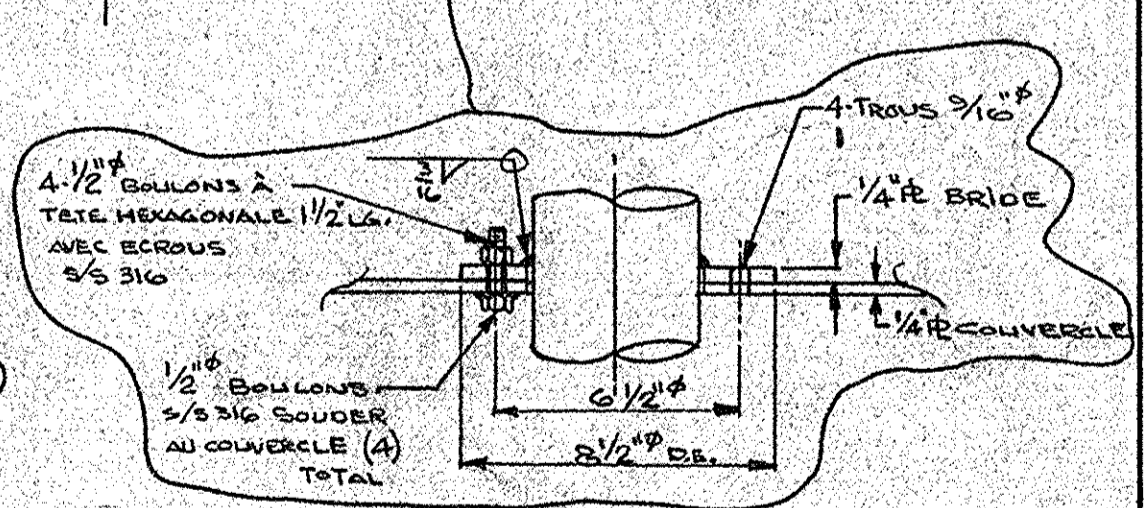
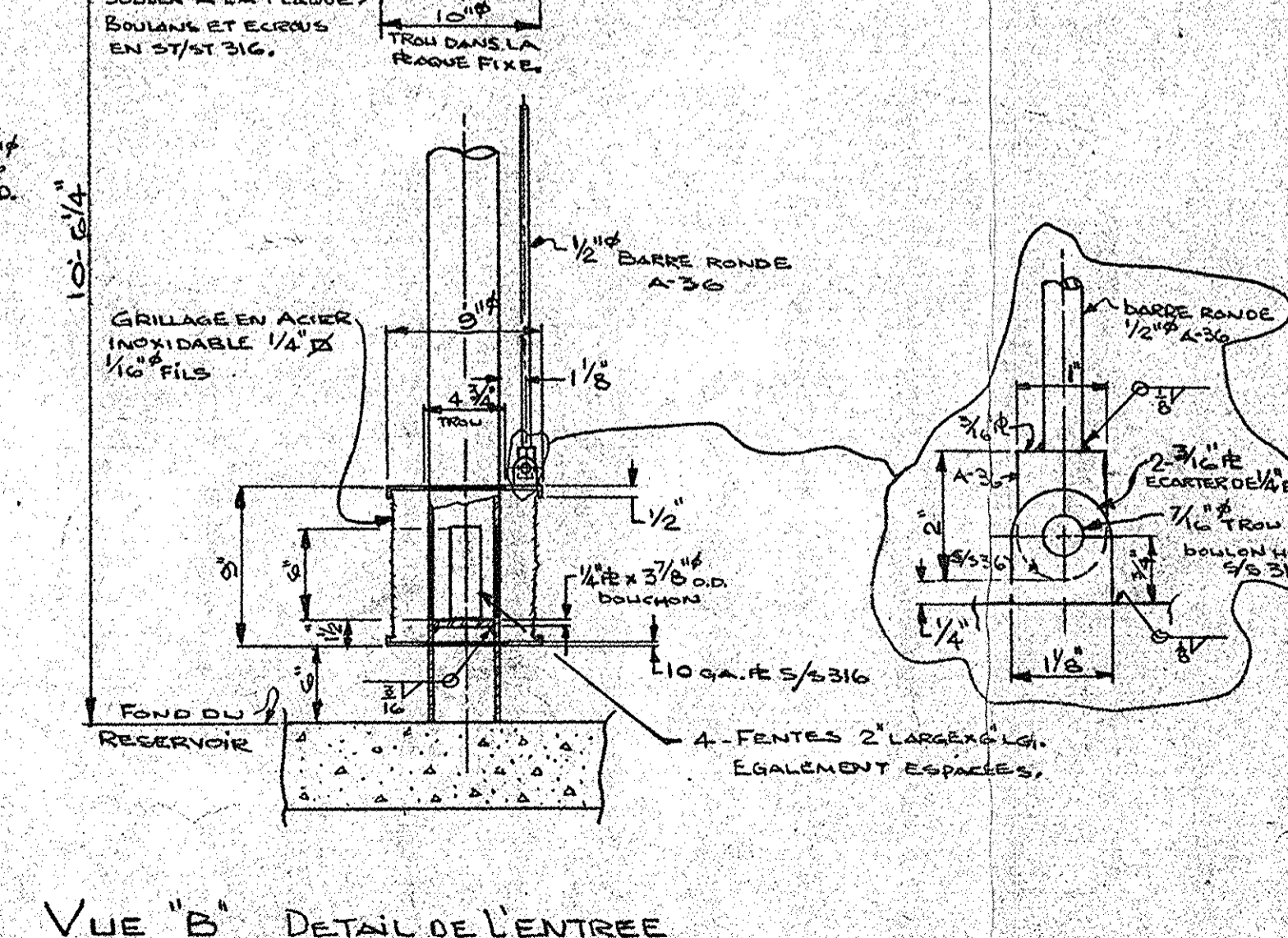
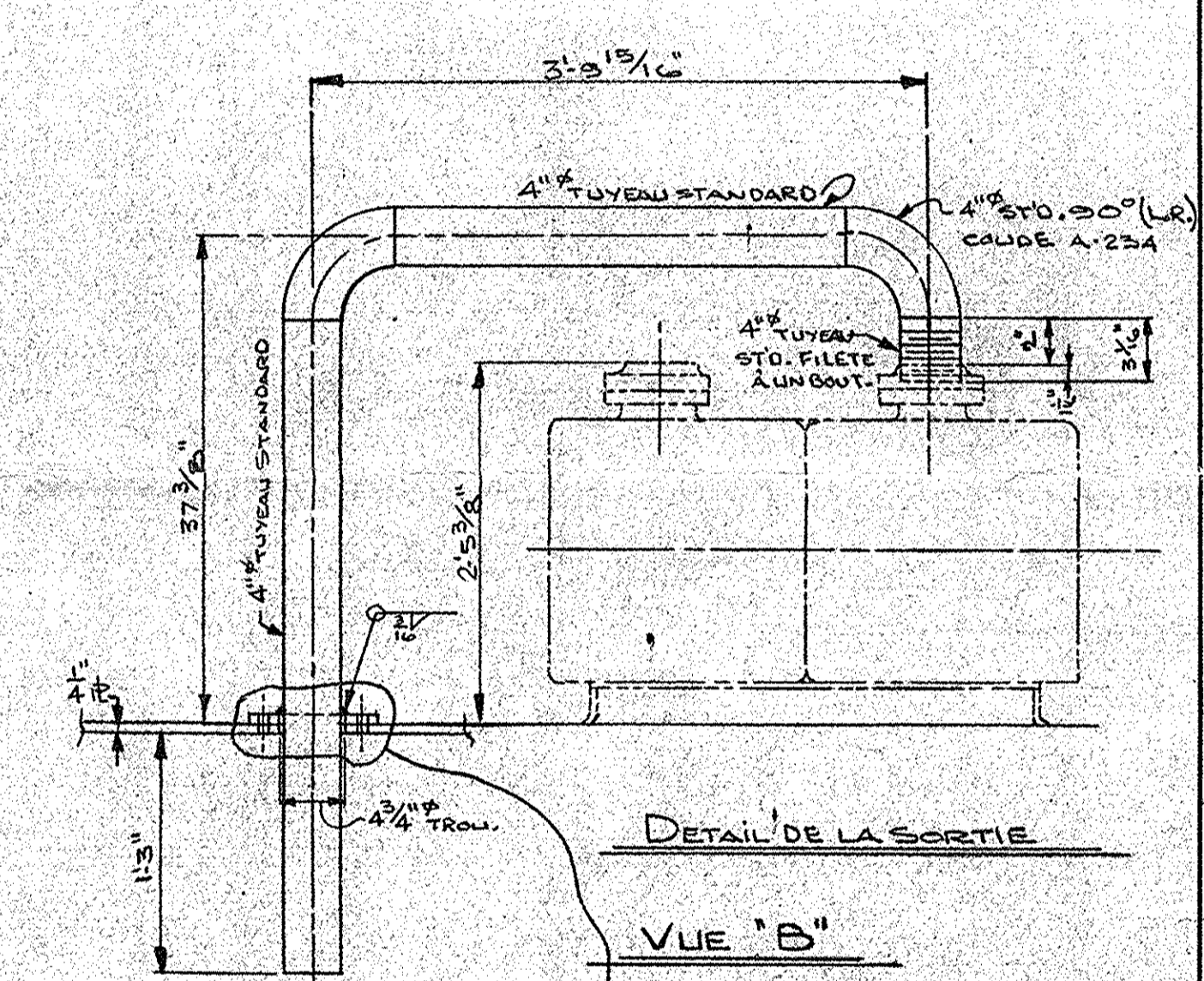
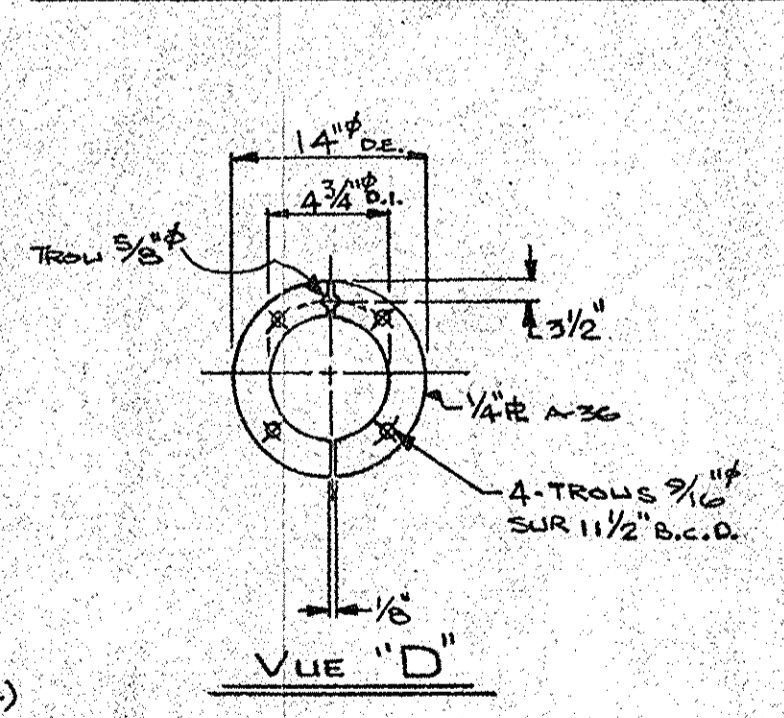
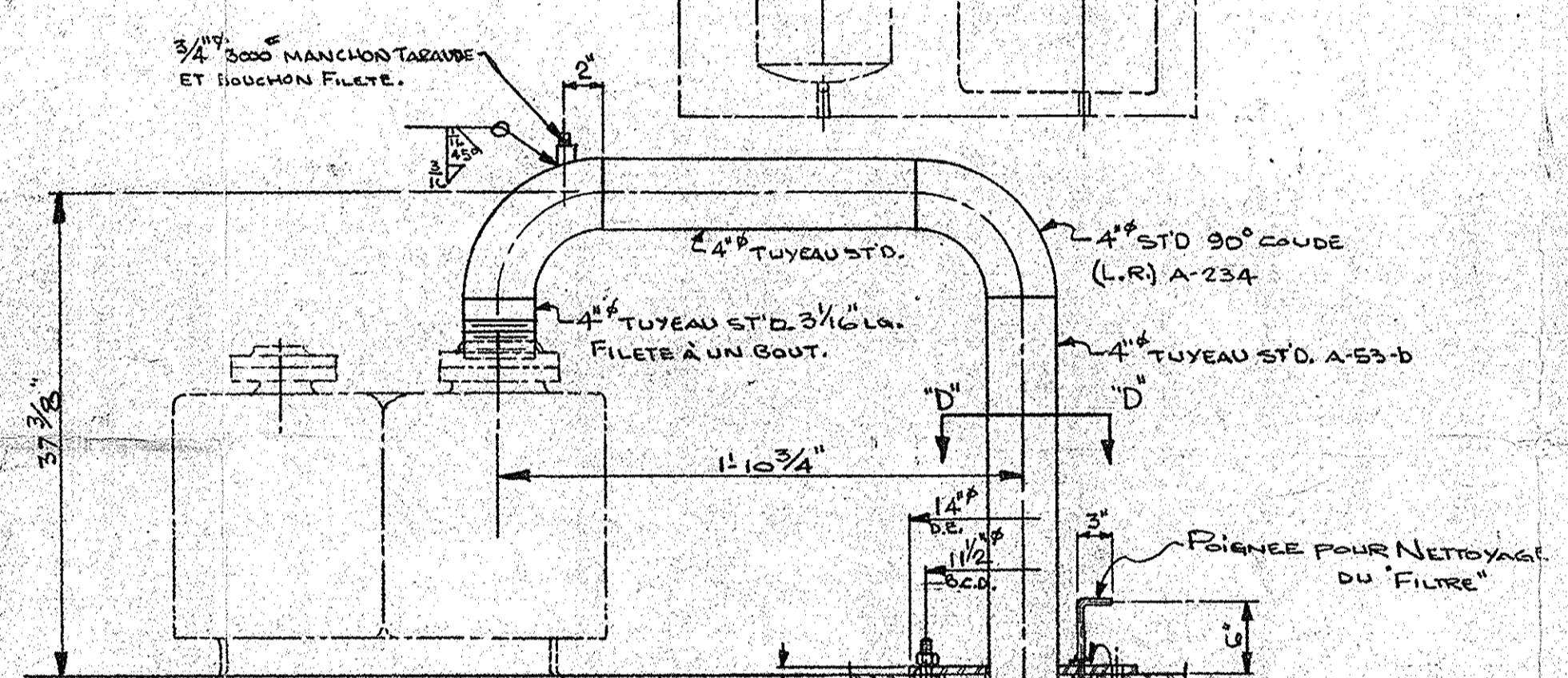
REV.	DESCRIPTION	DATE	BY
1	PEINTURES EXTERIEURES CHANGÉES		
2	DETAIT (R.F.)		
ORDER No.	JOB No.	NO. REQUIRED	
	M-7411	1 (LIV.)	
REFERENCE	MUNICIPALITE DE MONTREAL, EST.		
CUSTOMER	"ELF" HYDROCARBURES DU QUEBEC.		
TITLE	SEPARATEUR D'HUILE		
	PLAN GENERAL		
	8'-0" DIAM. EXT. x 40'-0" LONG.		
DRAWN	DATE	SCALE	DWG. No.
CH'K	27 JUILLET 1976		20-5755-39
APP.			



ECHÈLES POUR ACCÈS:
(2 REQUISES TOTAL)
* LES ECHÈLES RECEVONT UNE COUCHE DE "COAL TAR EPOXY" NOIRE AVANT D'ÊTRE INSTALLÉES.



NOTES: TOUTE LA TUYAUTERIE DE LA POMPE AINSI QUE LA PLAQUE FIXE ET LA PLAQUE AMOVIBLE À ÊTRE PEINTURE D'UNE COUCHE DE "COAL TAR EPOXY". TOUTES LES PIÈCES EN ACIER-INOXIDABLE NE DOIVENT PAS ÊTRE PEINTES.

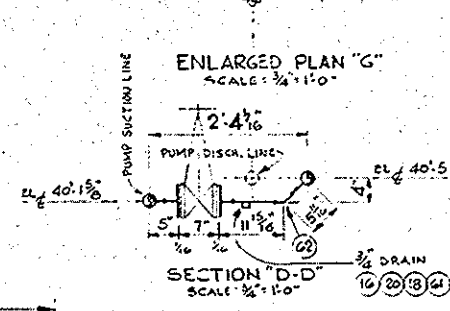
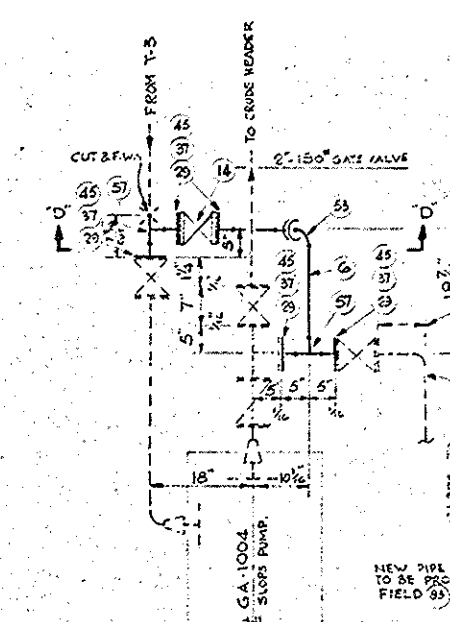
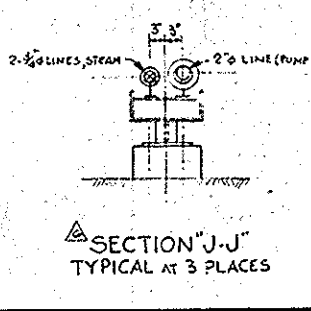
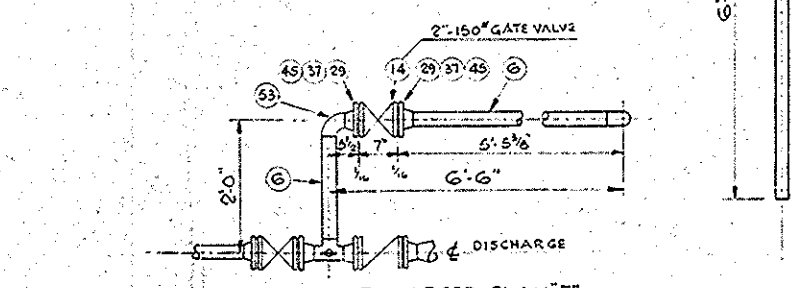
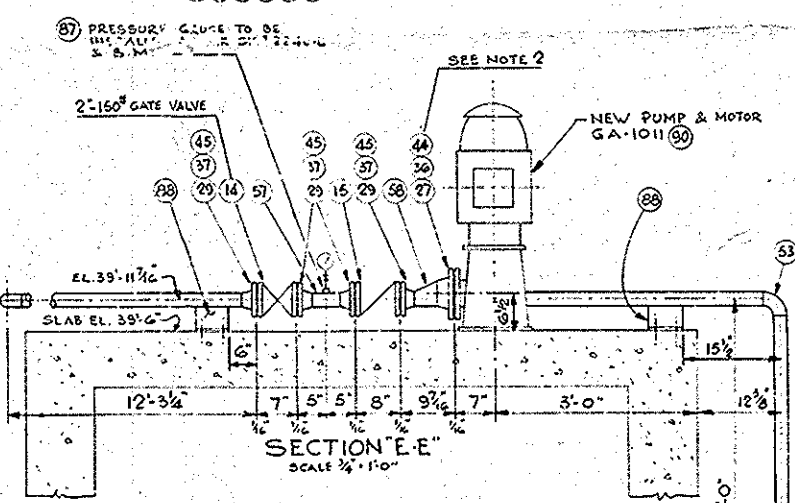
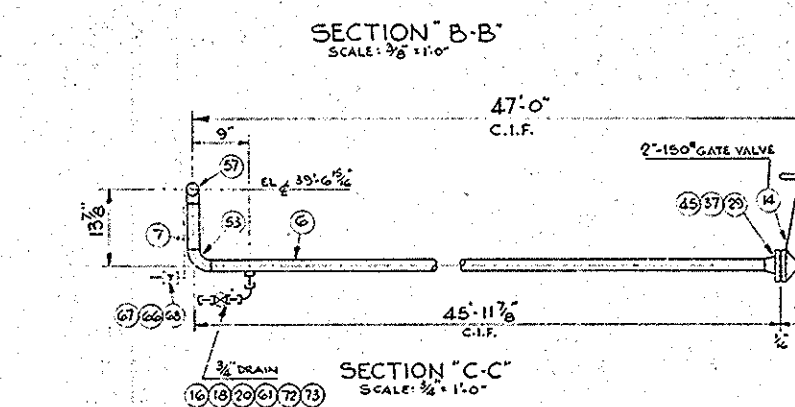
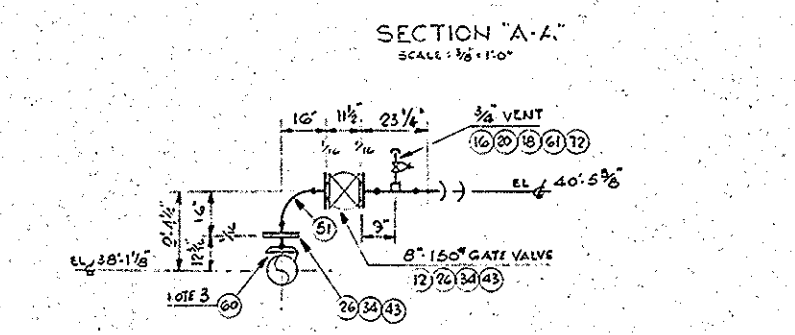
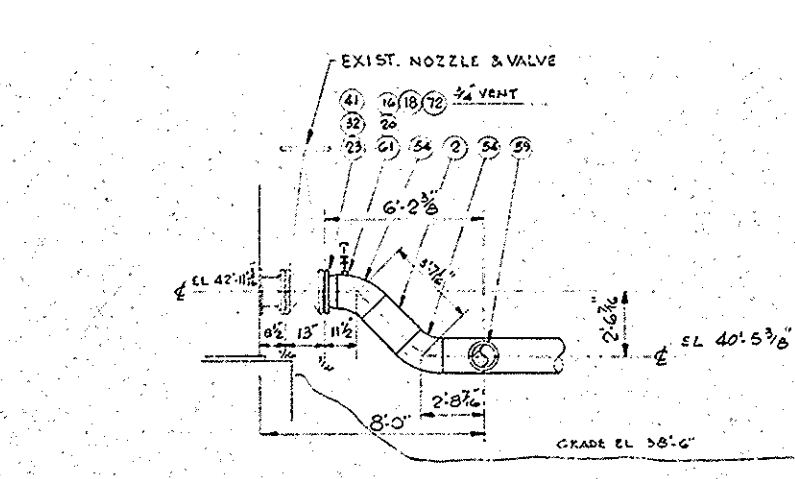
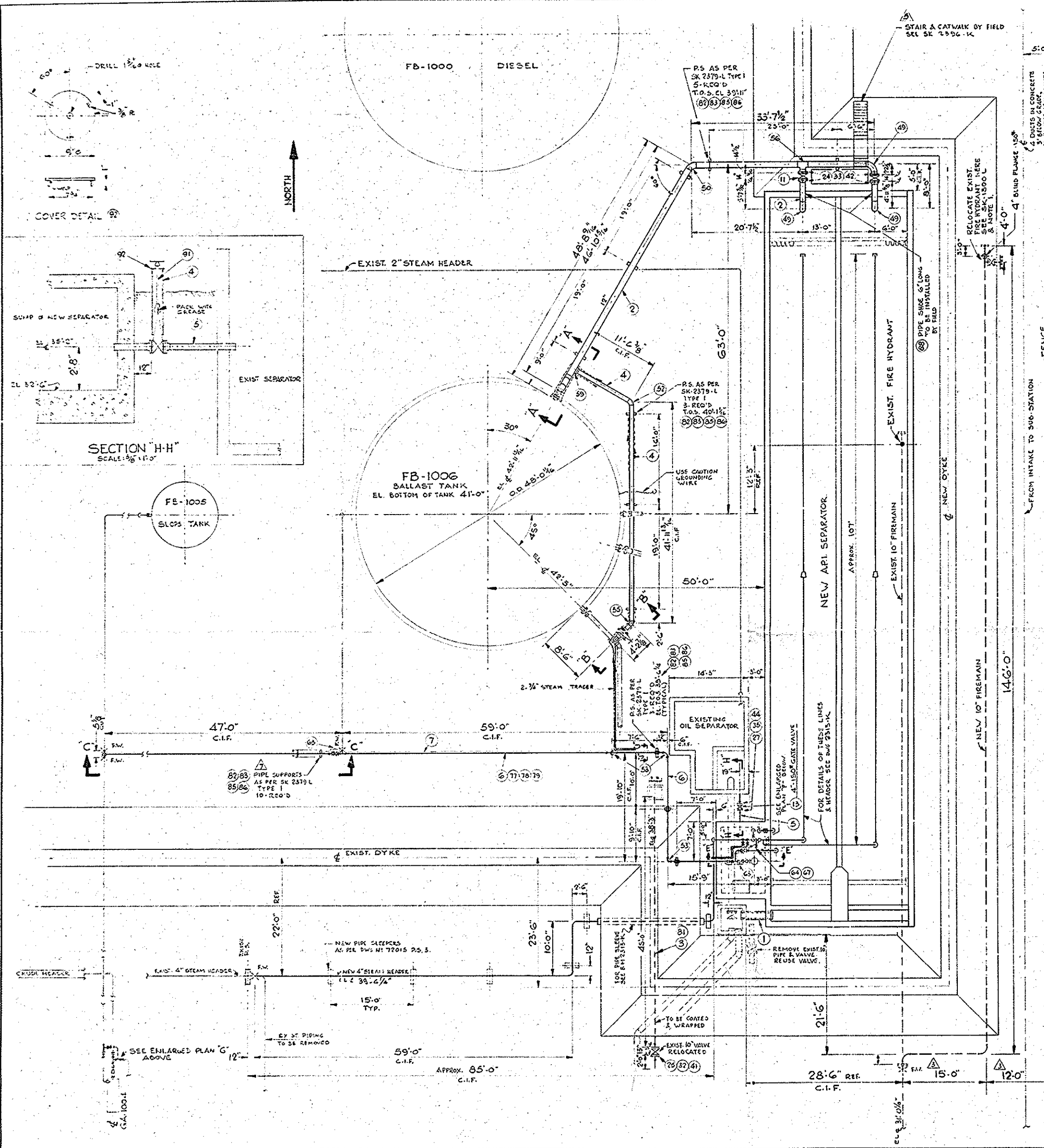


REV.	DESCRIPTION	DATE	BY
1	ACCÈS "A" DU BASSIN ÉTAIT 50"x50" POUR AVOIR À FAIRE COUVERCLE CHANGEABLE	14 OCT 1976	...
2	ACCÈS "A" (PASSAGE FILT.)	15 OCT 1976	...

ORDER NO.	JOB NO.	NO. REQUIRED
	M-7379	1 (UN)

REFERENCE	MONTREAL - EST.
CUSTOMER	"ELF" HYDROCARBURES DU QUEBEC.
TITLE	INSTALLATION DE LA POMPE DU BASSIN COLLECTEUR.

THIS DRAWING IS THE PROPERTY OF DRUMMOND WELDING & STEEL WORKS LTD. THE INFORMATION AND KNOW-HOW HEREON MAY NOT BE USED NOR THE DRAWING REPRODUCED WITHOUT THE WRITTEN PERMISSION OF DRUMMOND WELDING & STEEL WORKS LTD. ALL REPRODUCTIONS IN WHOLE OR IN PART, INCLUDING VENDOR'S SHOP DRAWINGS, SHALL BEAR OR REFER TO THIS STAMP.



- NOTES:**
- 1- HAND TOOLS TO BE USED FOR DIGGING AT NEW FIRE HYDRANT LOCATION.
 - 2- EXIST. 1/2\"/>

BP REFINERY CANADA LTD

SK. 2379-L	STD. TYPICAL PIPE SUPPORT
SK. 1500-L	STD. FOR FIRE HYDRANT
2376-H	A.P.I. SEP. ELECTRICAL LAYOUT
2313-K	PIPING ISOMETRIC & DETAIL OF HEADS
72521	CABLE DIST. A DUCT LAYOUT
SK. 1554-K	ADDITION OF FLUSH LINES DISCH. @ 100'
72053	LAYOUT OF TANKAGE AT TRANSIT
CONV. 2319-E-L	CONV. LAYOUT - A.P.I. SEPARATOR
CONV. 2082-G-1	48\"/>
CONV. 2082-G-2	48\"/>
72758	LOC. & DET. OF PIPE SUPPORTS FOR 2\"/>
72635	VALVE PIT & PIPING FROM SEPARATOR TO
72641	PLAN OF WAREHOUSE PIPING AT TRANSIT
72598	PIPERUNE & DUCT LAYOUT AT N.W. RAILWAY
72075	C.A. OF REPAIR CONC. ON SEPARATOR
72067	LINK-UP PIPEWORK AT TRANSIT PUMP
72066	PIPEWORK AT BALLAST & SLOPS TANK
1901-K	ALTER. TO EXIST. OIL SEPARATOR
SK. 1943-K	LOCATION OF VESSELS & EQUIP.
E-4414-303	INTERCONNECTING PIPING TO BOILER & TAN
E-4414-16	UTILITY FLOW DIAG.
SK. 2379-K	DIAGRAM
E-4414-5	P&I DIAGRAM
E-4414-10	PLOT PLAN
REFERENCE DWG	TITLE

BP REFINERY CANADA LTD			
1245 SHELBROOKE ST. W.		MONTREAL	
- TRANSIT AREA -			
NEW A.P.I. SEPARATOR			
PIPING PLAN			
& SECTIONS			
SCALE: 3/8\"/>		DATE: 6-19-70	
Job No. 8269 A		Drg. No. 23	
DRAWN	CHECKED	ENGR.	APP.
D.R.L.	R. INIC	R.P.	R.P.

4-10-70	PIPE SUPPORTS WERE SLEEPERS	7	D.R.L.	82
4-10-70	SECTION J-J ADDED	6	D.R.L.	83
20-02-70	STAIR & CATWALK ADDED	5	D.R.L.	87
16-SEP-70	ISSUED FOR CONSTRUCTION	4	D.R.L.	87
10-SEPT-70	ISSUED FOR CONSTRUCTION OF FIRE MAIN ONLY	3	D.R.L.	87
31-MAR-70	4\"/>	2	D.R.L.	87
18-04-70	ISSUED FOR COMMENTS	1	D.R.L.	87
DATE	DESCRIPTION	REV.	DWN.	APP.