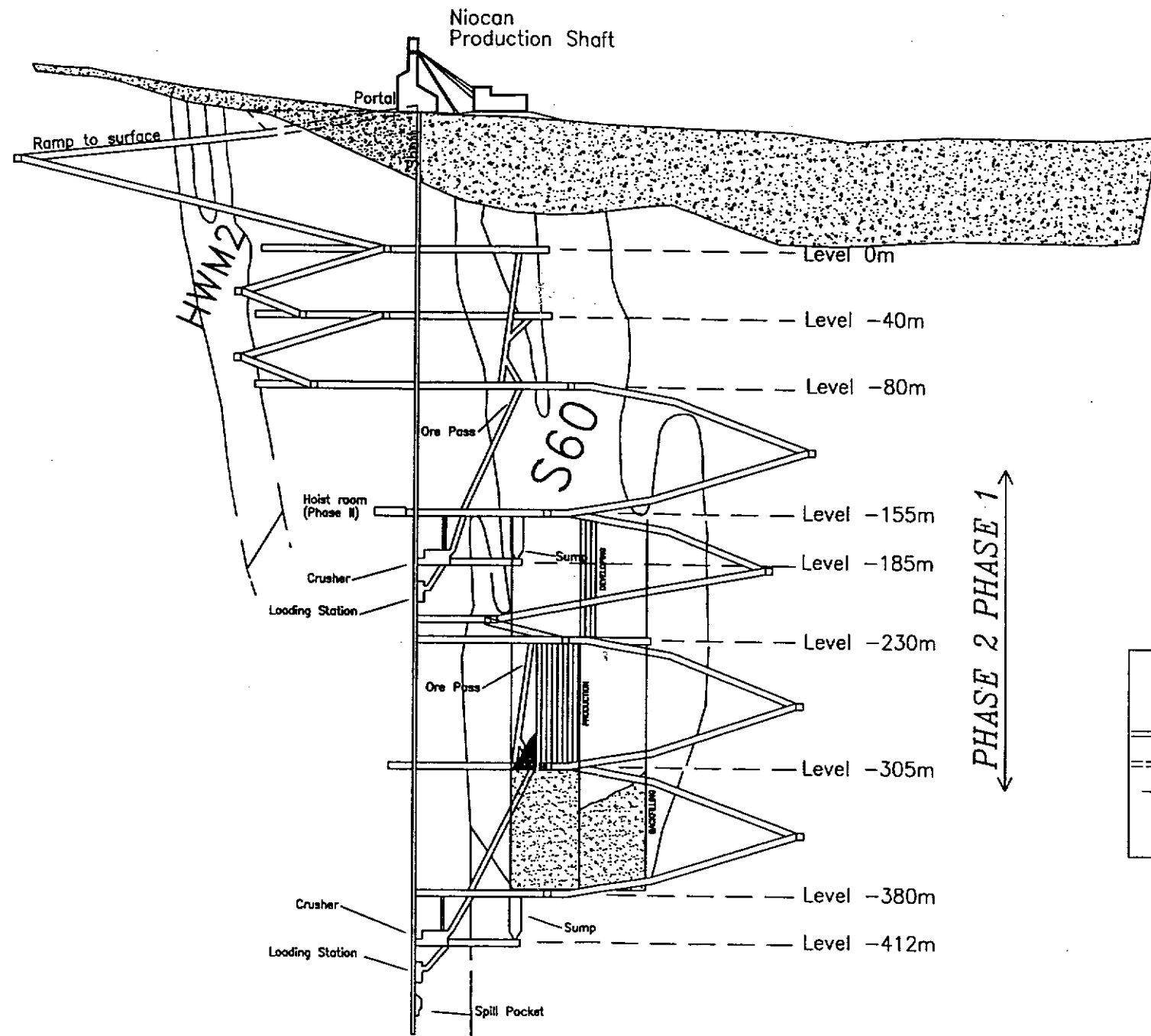


REVISIONS	
NO.	DESCRIPTION
1	ISSUED FOR P&I REPORT
2	ISSUED FOR P&I REPORT
3	ISSUED FOR P&I REPORT
4	ISSUED FOR P&I REPORT
5	ISSUED FOR P&I REPORT
6	ISSUED FOR P&I REPORT
7	ISSUED FOR P&I REPORT
8	ISSUED FOR P&I REPORT
9	ISSUED FOR P&I REPORT
10	ISSUED FOR P&I REPORT
11	ISSUED FOR P&I REPORT
12	ISSUED FOR P&I REPORT
13	ISSUED FOR P&I REPORT
14	ISSUED FOR P&I REPORT
15	ISSUED FOR P&I REPORT
16	ISSUED FOR P&I REPORT
17	ISSUED FOR P&I REPORT
18	ISSUED FOR P&I REPORT
19	ISSUED FOR P&I REPORT
20	ISSUED FOR P&I REPORT
21	ISSUED FOR P&I REPORT
22	ISSUED FOR P&I REPORT
23	ISSUED FOR P&I REPORT
24	ISSUED FOR P&I REPORT
25	ISSUED FOR P&I REPORT
26	ISSUED FOR P&I REPORT
27	ISSUED FOR P&I REPORT
28	ISSUED FOR P&I REPORT
29	ISSUED FOR P&I REPORT
30	ISSUED FOR P&I REPORT
31	ISSUED FOR P&I REPORT
32	ISSUED FOR P&I REPORT
33	ISSUED FOR P&I REPORT
34	ISSUED FOR P&I REPORT
35	ISSUED FOR P&I REPORT
36	ISSUED FOR P&I REPORT
37	ISSUED FOR P&I REPORT
38	ISSUED FOR P&I REPORT
39	ISSUED FOR P&I REPORT
40	ISSUED FOR P&I REPORT
41	ISSUED FOR P&I REPORT
42	ISSUED FOR P&I REPORT
43	ISSUED FOR P&I REPORT
44	ISSUED FOR P&I REPORT
45	ISSUED FOR P&I REPORT
46	ISSUED FOR P&I REPORT
47	ISSUED FOR P&I REPORT
48	ISSUED FOR P&I REPORT
49	ISSUED FOR P&I REPORT
50	ISSUED FOR P&I REPORT
51	ISSUED FOR P&I REPORT
52	ISSUED FOR P&I REPORT
53	ISSUED FOR P&I REPORT
54	ISSUED FOR P&I REPORT
55	ISSUED FOR P&I REPORT
56	ISSUED FOR P&I REPORT
57	ISSUED FOR P&I REPORT
58	ISSUED FOR P&I REPORT
59	ISSUED FOR P&I REPORT
60	ISSUED FOR P&I REPORT
61	ISSUED FOR P&I REPORT
62	ISSUED FOR P&I REPORT
63	ISSUED FOR P&I REPORT
64	ISSUED FOR P&I REPORT
65	ISSUED FOR P&I REPORT
66	ISSUED FOR P&I REPORT
67	ISSUED FOR P&I REPORT
68	ISSUED FOR P&I REPORT
69	ISSUED FOR P&I REPORT
70	ISSUED FOR P&I REPORT
71	ISSUED FOR P&I REPORT
72	ISSUED FOR P&I REPORT
73	ISSUED FOR P&I REPORT
74	ISSUED FOR P&I REPORT
75	ISSUED FOR P&I REPORT
76	ISSUED FOR P&I REPORT
77	ISSUED FOR P&I REPORT
78	ISSUED FOR P&I REPORT
79	ISSUED FOR P&I REPORT
80	ISSUED FOR P&I REPORT
81	ISSUED FOR P&I REPORT
82	ISSUED FOR P&I REPORT
83	ISSUED FOR P&I REPORT
84	ISSUED FOR P&I REPORT
85	ISSUED FOR P&I REPORT
86	ISSUED FOR P&I REPORT
87	ISSUED FOR P&I REPORT
88	ISSUED FOR P&I REPORT
89	ISSUED FOR P&I REPORT
90	ISSUED FOR P&I REPORT
91	ISSUED FOR P&I REPORT
92	ISSUED FOR P&I REPORT
93	ISSUED FOR P&I REPORT
94	ISSUED FOR P&I REPORT
95	ISSUED FOR P&I REPORT
96	ISSUED FOR P&I REPORT
97	ISSUED FOR P&I REPORT
98	ISSUED FOR P&I REPORT
99	ISSUED FOR P&I REPORT
100	ISSUED FOR P&I REPORT

PROJECT: NIOCAN PROJECT
 INSTALLATIONS AUX NIVEAUX PRINCIPAUX
 EL. 00, -80, -155, -185, -207, -220, -230
 PRINCIPAL LEVEL INSTALLATIONS
 EL. 00, -80, -155, -185, -207, -220, -230
 DRAWING NO. A1-99017-0510-MN



LEGEND

- Overburden
- Proposed Development Phase 1
- Proposed Development Phase 2
- Niocan Ore Body Limits

Scale
100m



MET-CHEM
CANADA

SNC-LAVALIN

Niocan INC.
NIOBIUM / CANADA

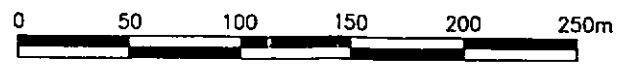
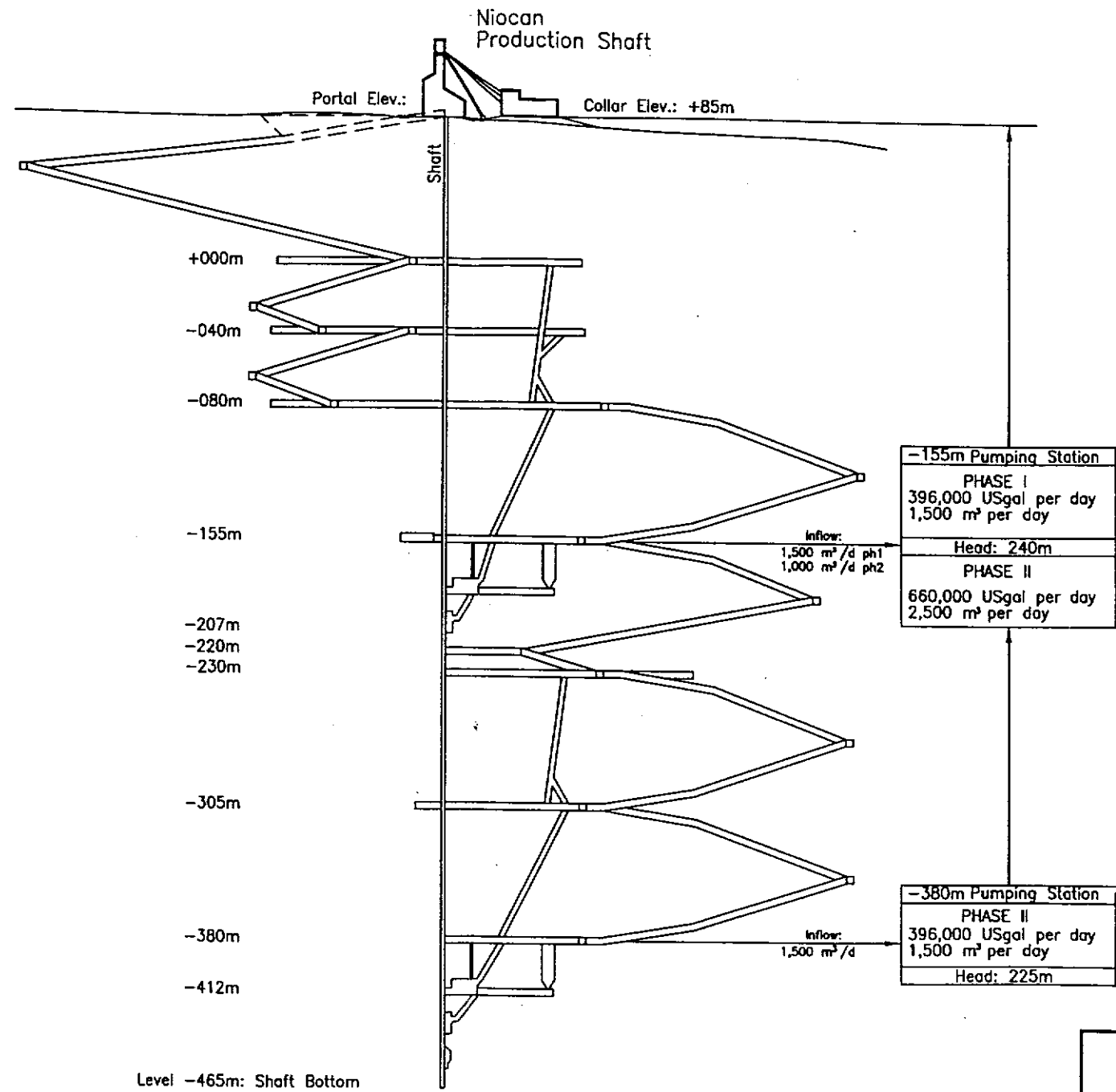
PROJET NIOCAN
SECTION
NIOCAN PROJECT
VERTICAL SECTION

DRAWING NO. A-99017-0507-MN

REV. C

THIS DRAWING IS CONFIDENTIAL IN DESIGN AND DETAIL AND IS THE PROPERTY OF MET-CHEM CANADA INC. IT MUST NOT BE USED EXCEPT IN CONNECTION WITH MET-CHEM WORK. ALL RIGHTS OF DESIGN AND INVENTION ARE RESERVED.

FILE: P:\PROJ\AUTOCAD\WING\X507.dwg, 99/12/02 AT 14:13, User: P141 DB-1 DE-4



THIS DRAWING IS CONFIDENTIAL IN DESIGN AND DETAIL AND IS THE PROPERTY OF MET-CHEM CANADA INC. IT MUST NOT BE USED EXCEPT IN CONNECTION WITH MET-CHEM WORK. ALL RIGHTS OF DESIGN AND INVENTION ARE RESERVED.

MET-CHEM <small>MONTREAL CANADA</small>	
Niocan INC. <small>NIOBIUM / CANADA</small>	
PROJET NIOCAN	
DIAGRAMME DE DENOYAGE DE LA MINE	
NIOCAN PROJECT	
MINE DEWATERING SCHEMATIC	
DRAWING NO.	A-99017-0509-MN
REV.	C

FILE: P:\PROJETS\NIOCAN\MINING\30559.dwg, 99/12/02 AT 13:46, U=H, PU=1, DR=4