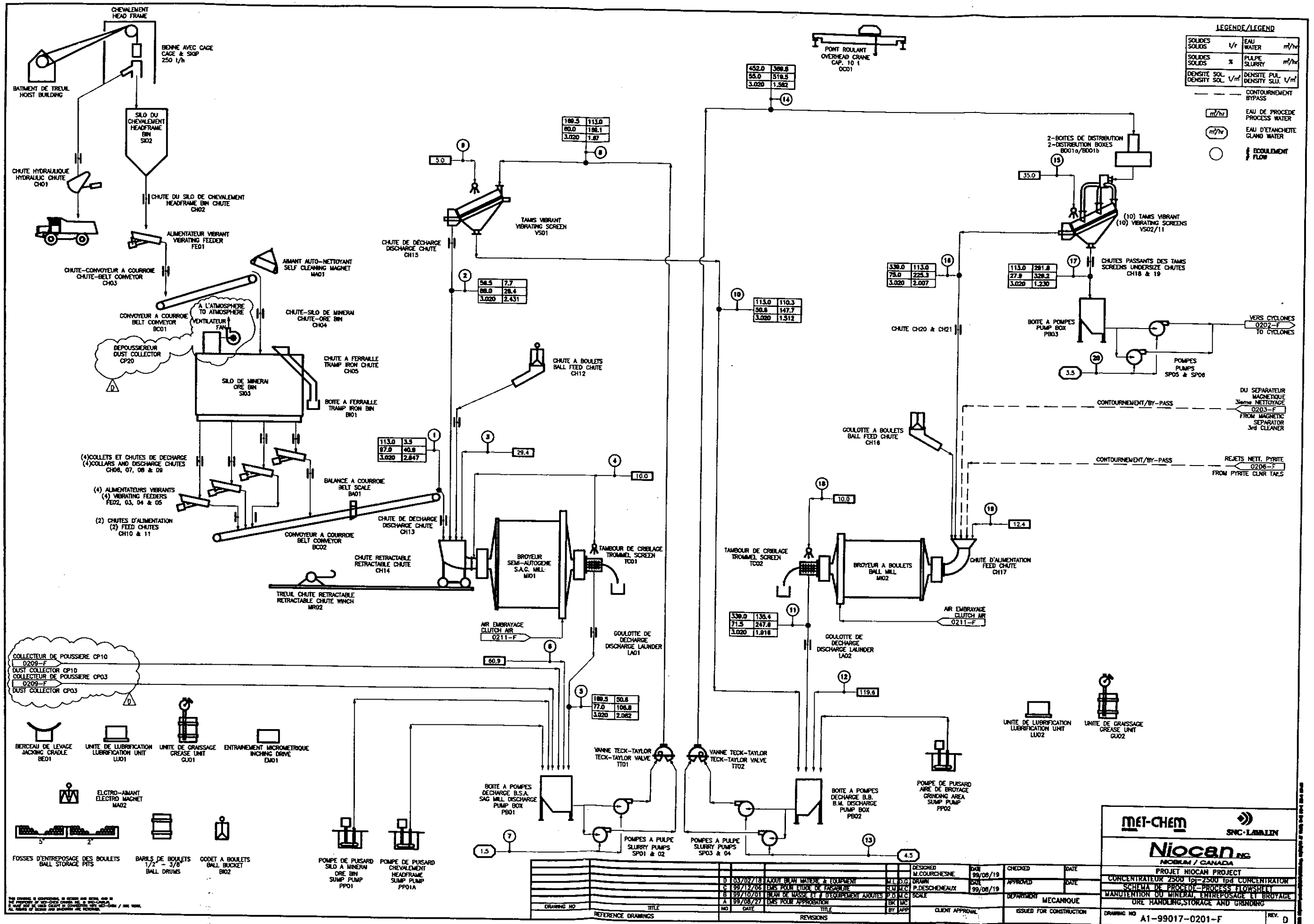


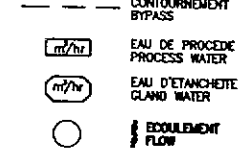
Annexe V

Schéma de procédé



LEGENDE/LEGEND

SOLIDES SOLIDS	l/r	EAU WATER	m ³ /hr
SOLIDES SOLIDS	x	PULPE SLURRY	m ³ /hr
DENSITE SOL. DENSITY SOL.	l/m ³	DENSITE PUL. DENSITY SLU.	l/m ³



452.0	508.8
58.0	518.5
3.020	1.582

100.5	113.0
80.0	106.1
3.020	1.87

58.5	7.7
88.0	28.4
3.020	2.431

113.0	3.5
87.9	40.9
3.020	2.847

113.0	110.3
50.8	147.7
3.020	1.512

330.0	113.0
78.0	228.3
3.020	2.007

113.0	281.8
27.8	328.3
3.020	1.230

330.0	130.4
71.5	247.8
3.020	1.818

100.5	50.8
77.0	106.8
3.020	2.082

DRAWING NO	TITLE	NO	DATE	TITLE	BY	APP	CLIENT APPROVAL	ISSUED FOR CONSTRUCTION	DRAWING NO	REV.
									A1-99017-0201-F	D

mei-CHEM **SNC-LABLIN**

Niocan INC
NIOCAN / CANADA

PROJET NIOCAN PROJECT
CONCENTRATEUR 2500 tpj-2500 tpd CONCENTRATOR
SCHEMA DE PROCEDE-PROCESS FLOWSHEET
MANUTENTION DU MINERAL, ENTREPOSAGE ET BROYAGE
ORE HANDLING, STORAGE AND GRINDING

- (4) COLLETS ET CHUTES DE DECHARGE (4) COLLARS AND DISCHARGE CHUTES CH08, 07, 08 & 09
- (4) ALIMENTATEURS VIBRANTS (4) VIBRATING FEEDERS FE02, 03, 04 & 05
- (2) CHUTES D'ALIMENTATION (2) FEED CHUTES CH10 & 11

- COLLECTEUR DE POUSSIERE CP10 D209-F DUST COLLECTOR CP10
- COLLECTEUR DE POUSSIERE CP03 D209-F DUST COLLECTOR CP03

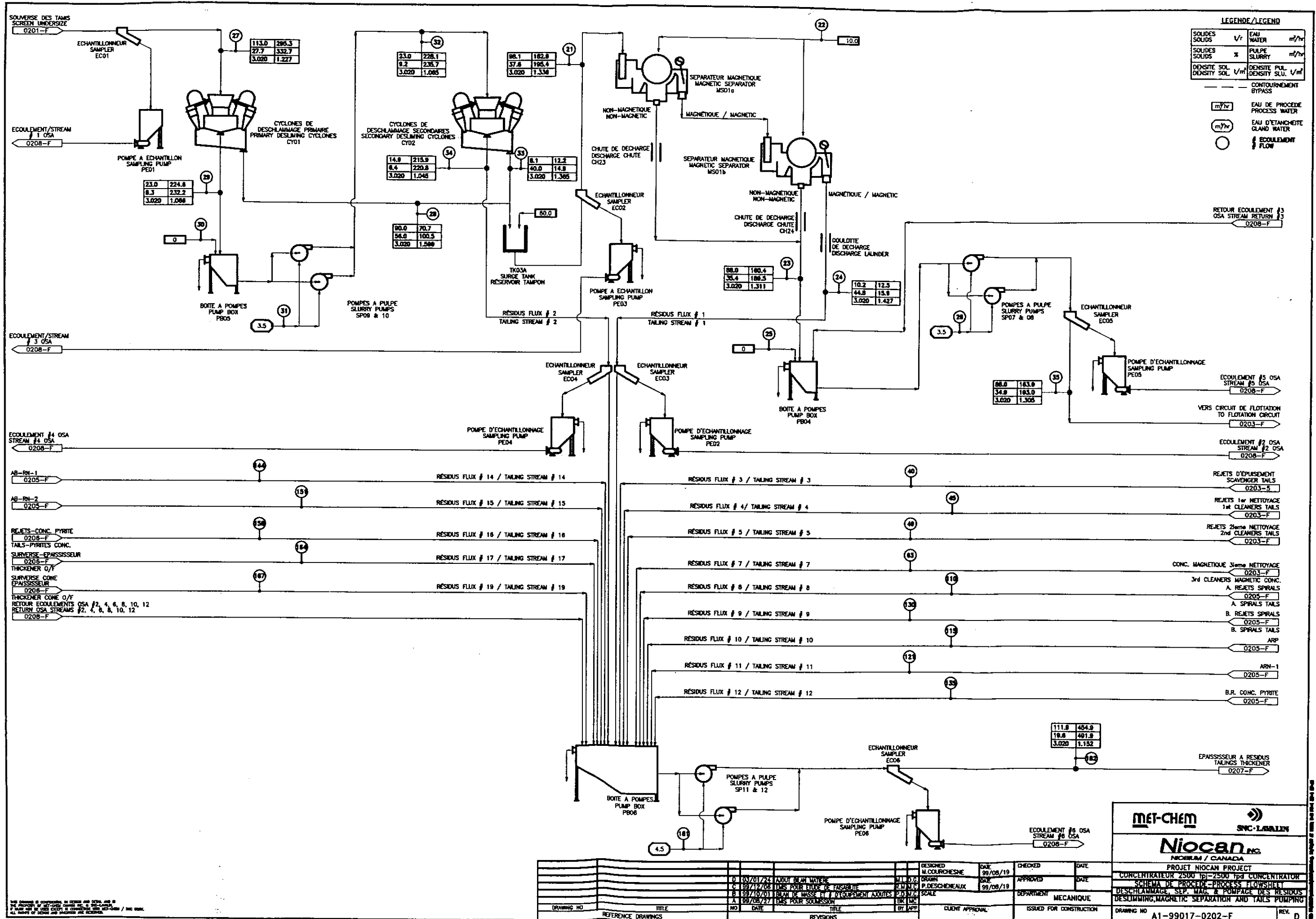
- BERCEAU DE LEVAGE JACKING CRADLE BE01
- UNITE DE LUBRIFICATION LUBRICATION UNIT LU01
- UNITE DE GRAISSAGE GREASE UNIT GU01
- ENTRAIEMENT MICROMETRIQUE INCHING DRIVE EM01

- ELECTRO-AMANT ELECTRO MAGNET MA02

- FOSSES D'ENTREPOSAGE DES BOULETS BALL STORAGE PITS
- BARILS DE BOULETS 1/2 - 3/8 BALL DRUMS
- CODET A BOULETS BALL BUCKET BO02

- POMPE DE PUSARD SAG MILL SUMP PUMP PP01
- POMPE DE PUSARD CHEVALEMENT HEADFRAME SUMP PUMP PP01A

ALL RIGHTS RESERVED BY SNC-LABLIN INC. 1999



LEGENDE / LEGEND

SOLIDES SOLIDS	√/r	EAU WATER	m³/hr
SOLIDES SOLIDS	*	PULPE SLURRY	m³/hr
DENSITE SOL. DENSITY SOL.	√/m³	DENSITE PUL. DENSITY SLU.	√/m³
--- CONTOURNEMENT BYPASS			
○ m³/hr EAU DE PROCEDE PROCESS WATER			
○ m³/hr EAU D'ETANCHETEIT GLAND WATER			
○ ECOULEMENT FLOW			

113.0	296.3
27.7	332.7
3.020	1.227

23.0	228.1
9.2	235.7
3.020	1.085

88.1	182.8
37.8	195.4
3.020	1.334

23.0	224.8
8.3	232.2
3.020	1.086

14.8	215.9
6.4	220.8
3.020	1.048

8.1	12.2
40.0	14.8
3.020	1.368

80.0	70.7
56.0	100.5
3.020	1.500

88.0	180.4
38.4	186.5
3.020	1.311

10.2	12.5
44.8	15.9
3.020	1.427

88.0	183.9
34.8	193.0
3.020	1.305

111.8	454.8
19.8	491.9
3.020	1.152

- ECOULEMENT #4 OSA STREAM #4 OSA 0208-F
- AB-RN-1 0205-F
- AB-RN-2 0205-F
- REJETS-CONC. PYRITE 0205-F
- TAILS-PYRITES CONC. 0205-F
- SURVERSE-EPASSISSEUR 0205-F
- THICKENER O/F 0205-F
- SURVERSE CONE EPASSISSEUR 0205-F
- THICKENER CONE O/F 0205-F
- RETOUR ECOULEMENTS OSA #2, 4, 6, 8, 10, 12 0208-F
- RETURN OSA STREAMS #2, 4, 6, 8, 10, 12 0208-F

met-chem **SNC-LABALIN**

Niocan INC.
NIOBERUM / CANADA

PROJET NIOCAN PROJECT
CONCENTRATEUR 2500 Td-2500 Tpd CONCENTRATOR
SCHEMA DE PROCEDE-PROCESS FLOW SHEET
DESCHLAGAGE, SEP. MAG. & POMPAGE DES RESIDUS
DESCHLAGING, MAGNETIC SEPARATION AND TAILS PUMPING

DESIGNED	M. COURCHESNE	DATE	99/08/19	CHECKED		DATE	
DRAWN	P. DESCHENEAUX	DATE	99/08/19	APPROVED		DATE	

DEPARTMENT: MECANIQUE

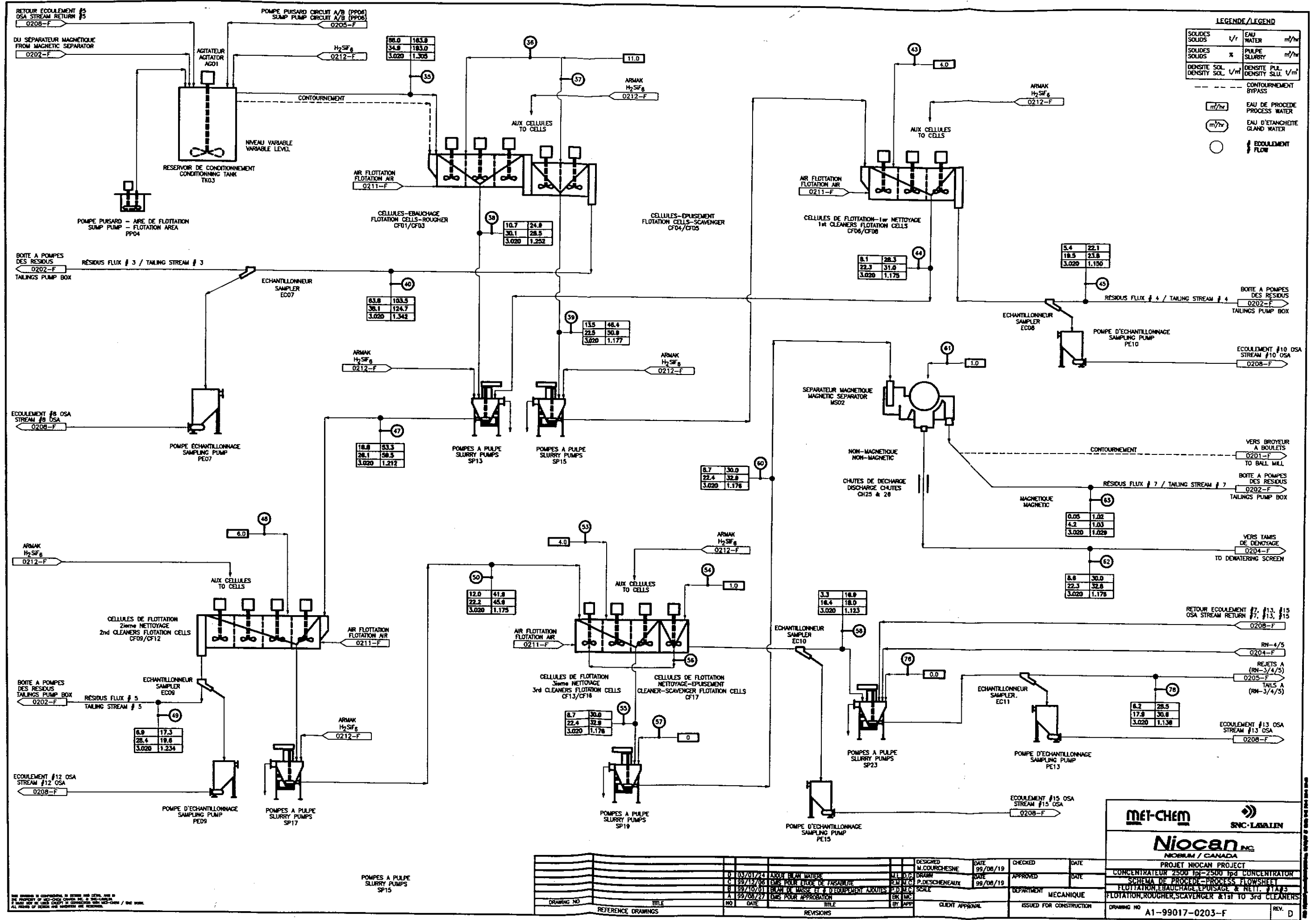
ISSUED FOR CONSTRUCTION

DRAWING NO: A1-99017-0202-F

REV. D

DRAWING NO	TITLE	NO	DATE	TITLE	BY	APP	CLIENT APPROVAL	ISSUED FOR CONSTRUCTION

THIS DRAWING IS THE PROPERTY OF MET-CHEM. IT IS TO BE USED ONLY IN CONNECTION WITH THE PROJECT AND IS NOT TO BE REPRODUCED OR TRANSMITTED IN ANY FORM OR BY ANY MEANS, ELECTRONIC OR MECHANICAL, INCLUDING PHOTOCOPYING, RECORDING, OR BY ANY INFORMATION STORAGE AND RETRIEVAL SYSTEM.

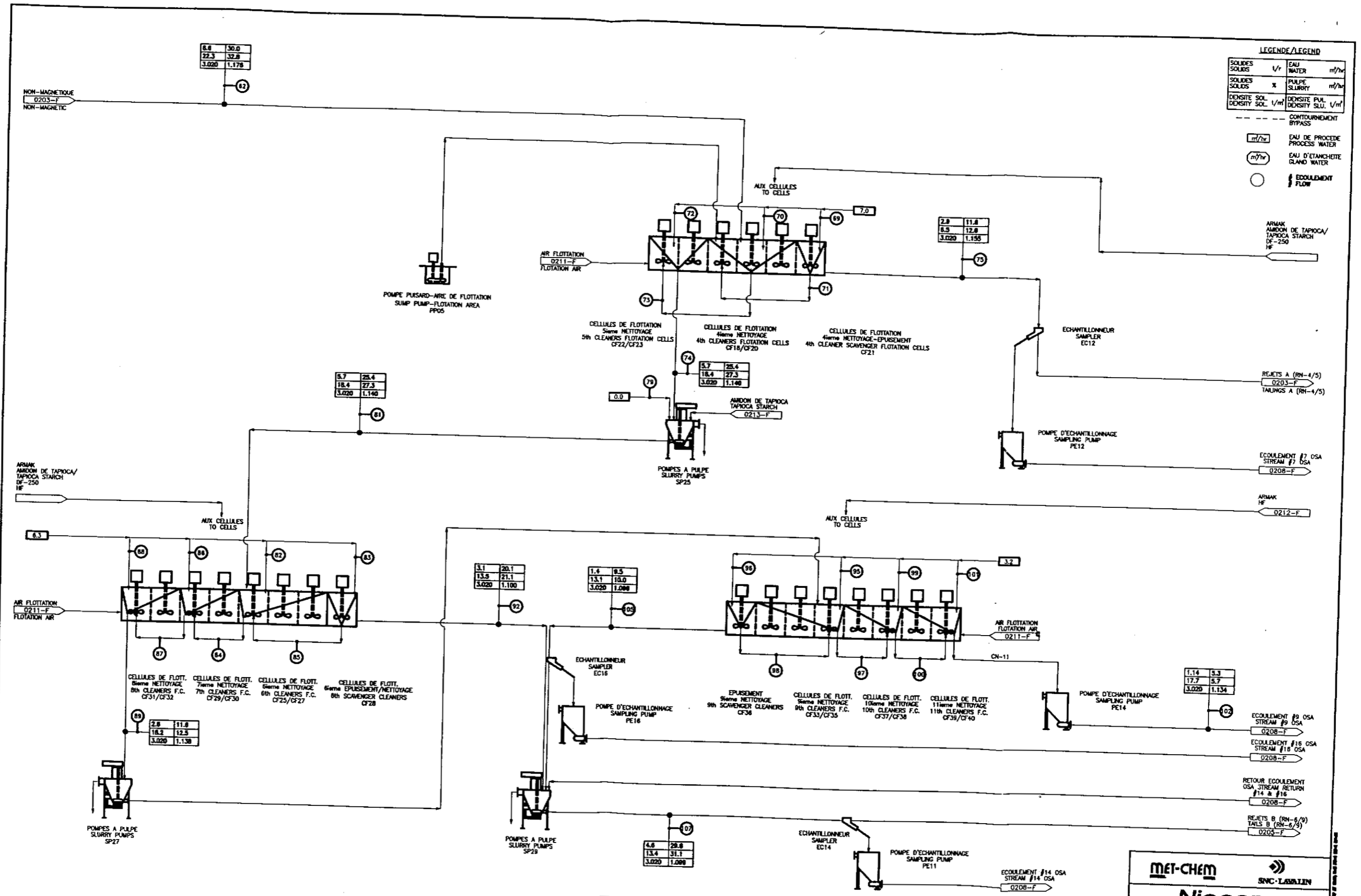


NOT BE USED IN CONNECTION WITH OTHER PROJECTS OR FOR OTHER PURPOSES WITHOUT THE WRITTEN PERMISSION OF MET-CHAM. THIS DRAWING IS THE PROPERTY OF MET-CHAM. CONSULT WITH MET-CHAM FOR ANY REVISIONS. ALL RIGHTS OF DESIGN AND INVENTION ARE RESERVED.

NO.	DATE	TITLE	BY	APP.
0	03/01/24	PROJET NIOCAN	ML	ML
1	09/12/08	EMIS POUR ETUDE DE FASABULIE	ML	ML
2	09/10/01	BLOCH DE MASSE ET D'INSTRUMENTATION	ML	ML
3	09/08/27	EMIS POUR APPROBATION	ML	ML

NO.	DATE	TITLE	BY	APP.
0	03/01/24	PROJET NIOCAN	ML	ML
1	09/12/08	EMIS POUR ETUDE DE FASABULIE	ML	ML
2	09/10/01	BLOCH DE MASSE ET D'INSTRUMENTATION	ML	ML
3	09/08/27	EMIS POUR APPROBATION	ML	ML

NO.	DATE	TITLE	BY	APP.
0	03/01/24	PROJET NIOCAN	ML	ML
1	09/12/08	EMIS POUR ETUDE DE FASABULIE	ML	ML
2	09/10/01	BLOCH DE MASSE ET D'INSTRUMENTATION	ML	ML
3	09/08/27	EMIS POUR APPROBATION	ML	ML



NOTES: 1. THIS DRAWING IS UNLESS OTHERWISE SPECIFIED IN METRIC UNITS.
 2. THE PROPERTY OF MET-CHEM CANADA INC. & NIOCAN INC.
 3. ALL RIGHTS OF DESIGN AND PATENT ARE RESERVED.

NO	DATE	TITLE	BY	APP	CLIENT APPROVAL
10	05/01/24	ASPH BLAN INDUS	M.L.D.G.		
9	09/17/08	BAN POUR FLUO DE FABRIQUE	P.DESCHENEALX		
8	09/10/01	BAN DE BASSE ET D'ÉCOUPEMENT AUXILIAIRES	SK		
7	09/08/27	BAN POUR APPROBATION	SK		

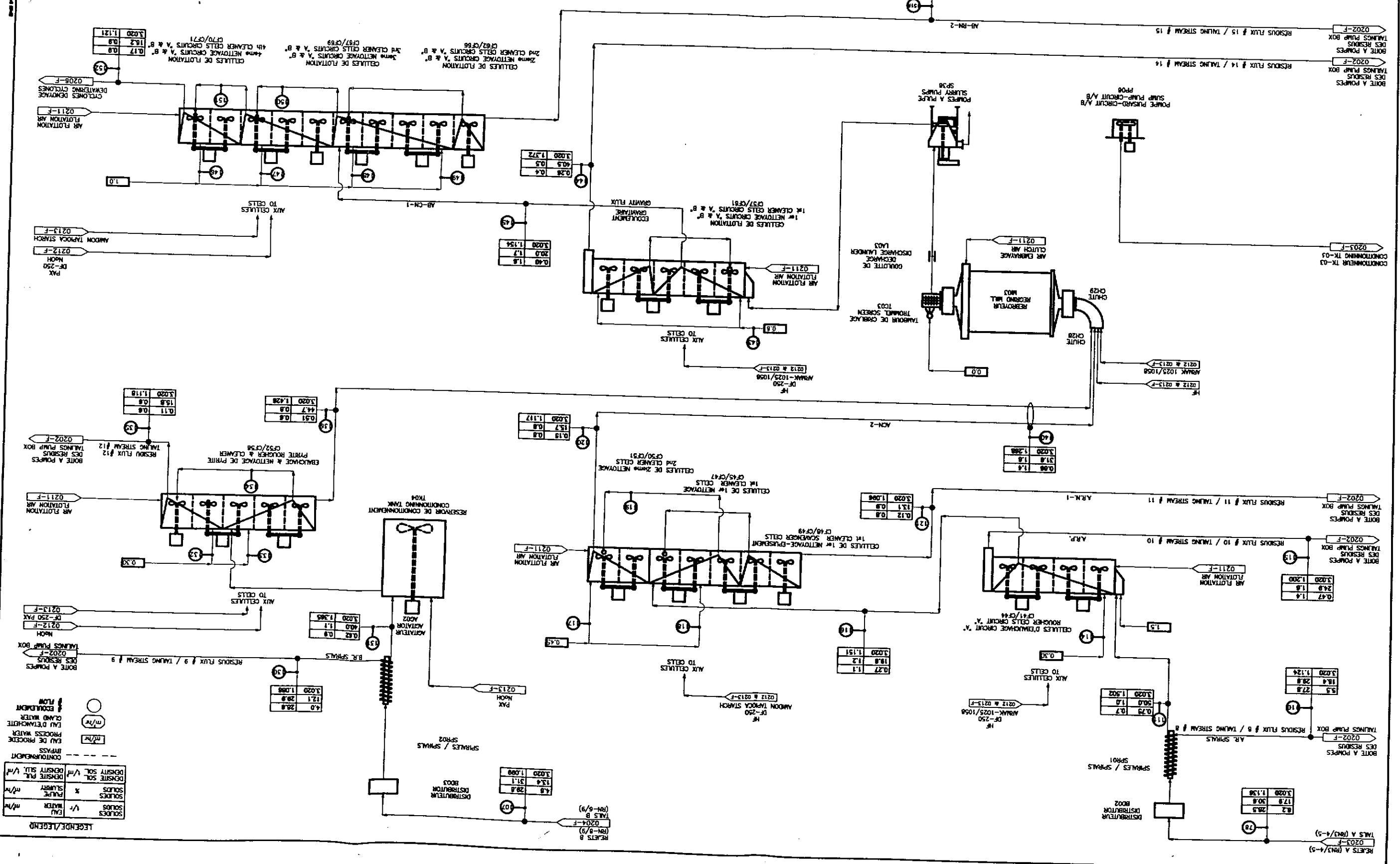
MET-CHEM **SNC-LABRIN**

Niocan INC.
 NIOCAN / CANADA

PROJET NIOCAN PROJECT
 CONCENTRATEUR 2500 TPI-2500 TPI CONCENTRATOR
 SCHEMA DE PROCÉDE-PROCESS FLOWSHEET
 FLOTATION-NETTOYAGES #4 A #11
 FLOTATION CLEANING STAGES 4th TO 11th

DRAWING NO A1-99017-0204-F REV. D

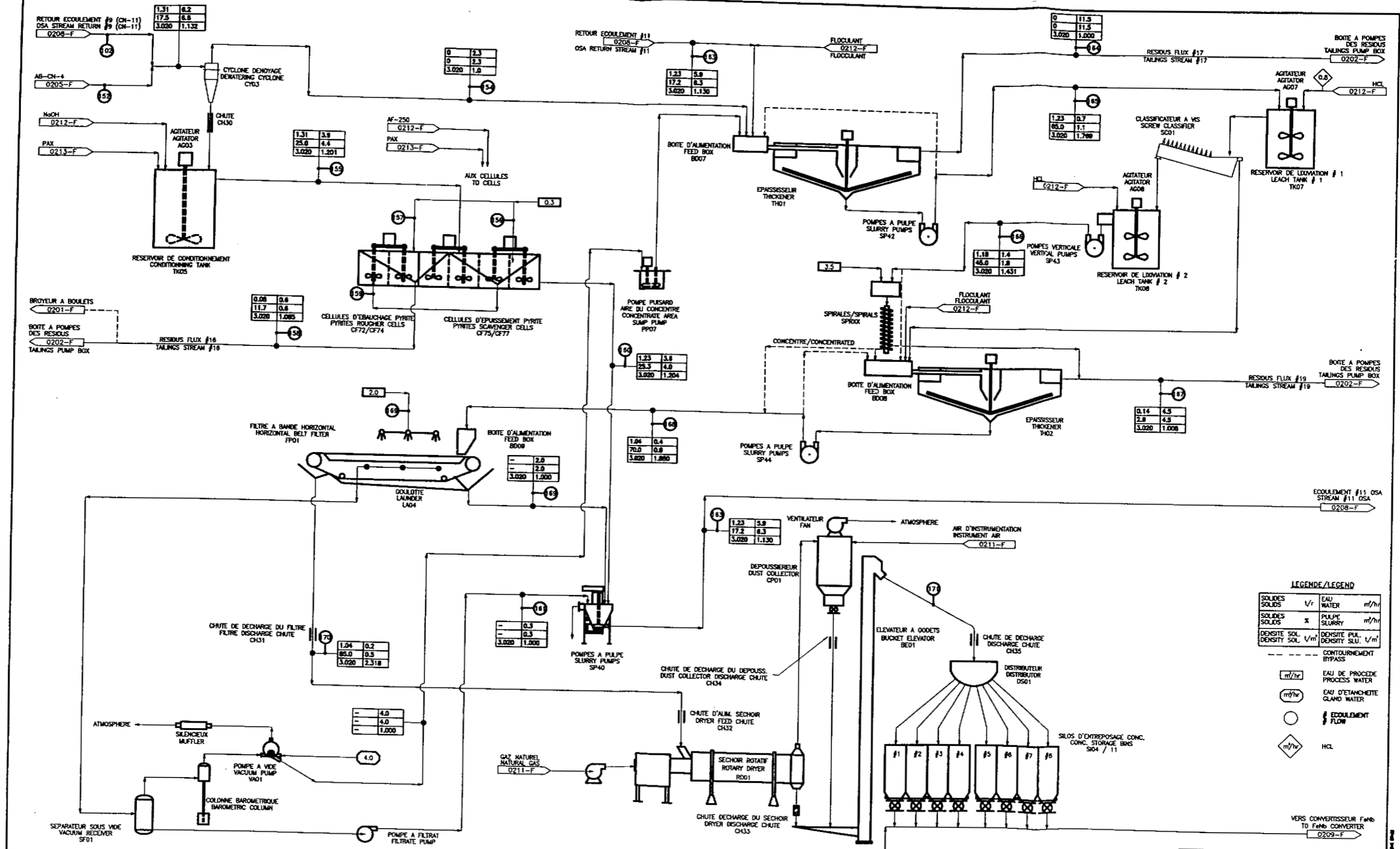
REV.	DATE	DESCRIPTION	ISSUED FOR CONSTRUCTION	CLIENT APPROVAL	REVISIONS	REFERENCE DRAWINGS
D						
C	99/06/19	DESIGNED				
B	99/06/19	APPROVED				
A	99/06/19	DESIGNED				



LEGENDE/LEGEND

○	Flow
○	Equipment
○	EAU D'ÉPURATION
○	PROCESS WATER
○	EAU DE PROCÉDÉ
○	BRASS
○	CONTENUENT
○	SOLIDES
○	WATER
○	SOLIDS
○	SLURRY
○	PULPE
○	SOLIDS
○	DENSITY PUL.
○	DENSITY SOL.

THIS DRAWING IS THE PROPERTY OF SNC-LAMIN. IT IS TO BE USED ONLY FOR THE PROJECT AND SITE SPECIFICALLY IDENTIFIED HEREIN. IT IS NOT TO BE REPRODUCED, COPIED, OR TRANSMITTED IN ANY FORM OR BY ANY MEANS, ELECTRONIC OR MECHANICAL, INCLUDING PHOTOCOPYING, RECORDING, OR BY ANY INFORMATION STORAGE AND RETRIEVAL SYSTEM, WITHOUT THE WRITTEN PERMISSION OF SNC-LAMIN.



LEGENDE/LEGEND

SOLIDES SOLIDS	V/r	EAU WATER	m ³ /hr
SOLIDES SOLIDS	x	PULPE SLURRY	m ³ /hr
DENSITE SOL. DENSITY SOL.	l/m ³	DENSITE PUL. DENSITY SLU.	l/m ³
--- CONTOURNEMENT BYPASS			
m ³ /hr	EAU DE PROCEDE PROCESS WATER		
m ³ /hr	EAU D'ETANCHETE GLAND WATER		
○	ECOULEMENT FLOW		
◇	HCL		

NOTES: 1. ALL DIMENSIONS ARE IN METERS UNLESS OTHERWISE SPECIFIED.
 2. ALL DIMENSIONS ARE TO FACE UNLESS OTHERWISE SPECIFIED.
 3. ALL DIMENSIONS ARE TO CENTER UNLESS OTHERWISE SPECIFIED.
 4. ALL DIMENSIONS ARE TO CENTER UNLESS OTHERWISE SPECIFIED.

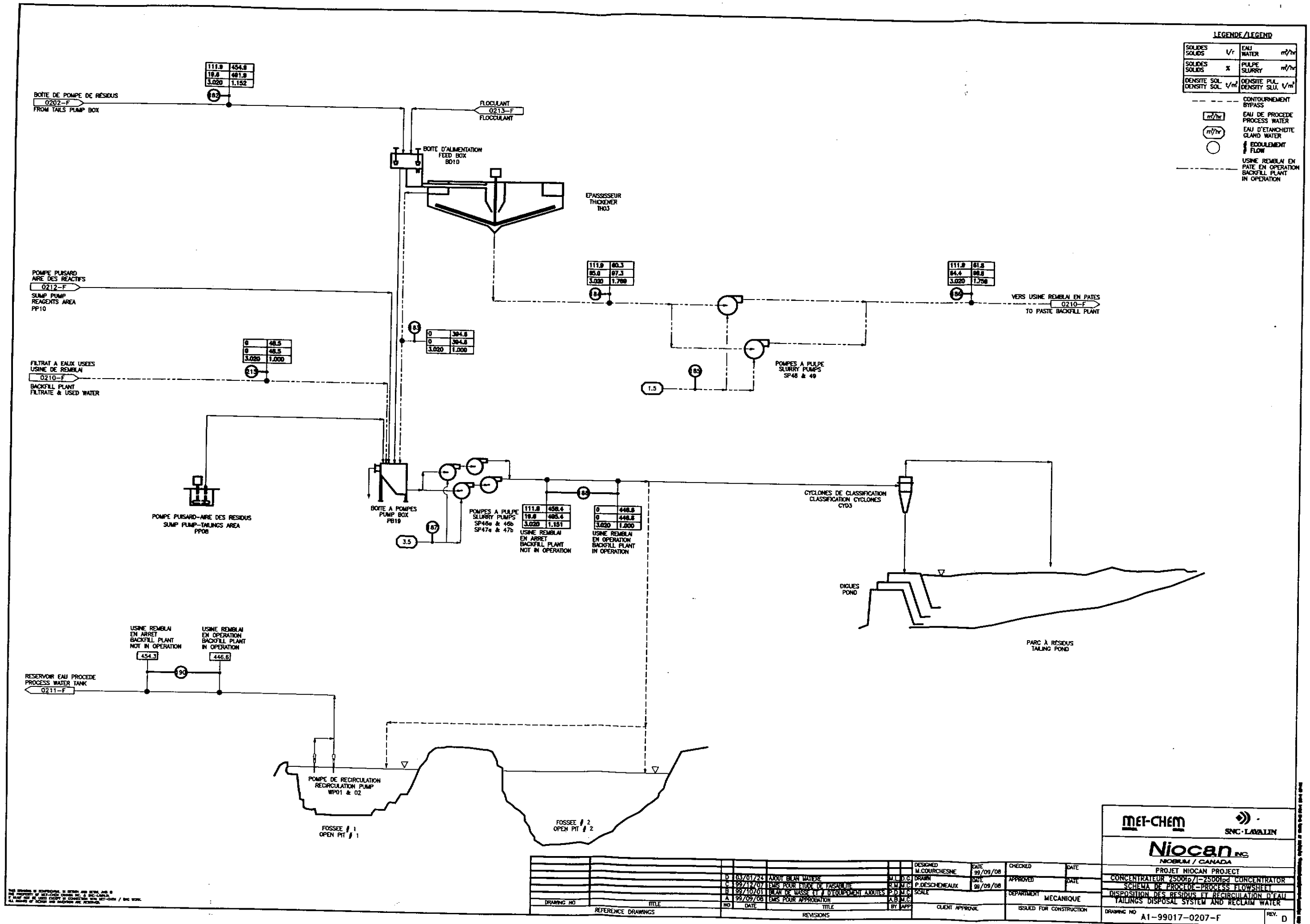
DRAWING NO.	TITLE	NO.	DATE	REVISIONS	BY	APP.	CLIENT APPROVAL	ISSUED FOR CONSTRUCTION

MEI-CHEM SNC-LABALIN

Niocan INC.
 NIOMAN / CANADA

PROJET NIOCAN PROJECT
 CONCENTRATEUR 2500 TPD-2500 TPD CONCENTRATOR
 SCHEMA DE PROCEDE-PROCESS FLOW SHEET
 POLISSAGE, EXTRACTEUR, FILTRATION ET SECHAGE
 POLISHING, LEACHING, FILTRATION AND DRYING CIRCUITS

DRAWING NO. A1-99017-0206-F REV. D




LEGENDE / LEGEND

SOLIDES SOLIDS	l/hr	EAU WATER	m³/hr
SOLIDES SOLIDS	x	PULPE SLURRY	m³/hr
DENSITE SOL. DENSITY SOL.	kg/m³	DENSITE PUL. DENSITY SLU.	kg/m³

--- CONTOURNEMENT BYPASS
 (m³/hr) EAU DE PROCEDE PROCESS WATER
 (m³/hr) EAU D'ETANCHETTE GLAND WATER
 () BOULEMENT FLOW
 --- USINE REMBLAI EN PATE EN OPERATION BACKFILL PLANT IN OPERATION

NO	DATE	TITLE	BY	APP
D	03/01/24	AJOUT BILAN MATIERE	M.L.D.C.	
C	199/12/07	EMIS POUR ETUDE DE FASABUTE	P.M.N.T.C.	
B	199/10/01	BILAN DE MASSE ET D'EQUIPEMENT AJOUTES	P.D.	
A	99/09/08	EMIS POUR APPROBATION	A.B.N.C.	

MEI-CHEM  **SNC-LAVALIN**

Niocan INC.
 NIOBIUM / CANADA

PROJET NIOCAN PROJECT

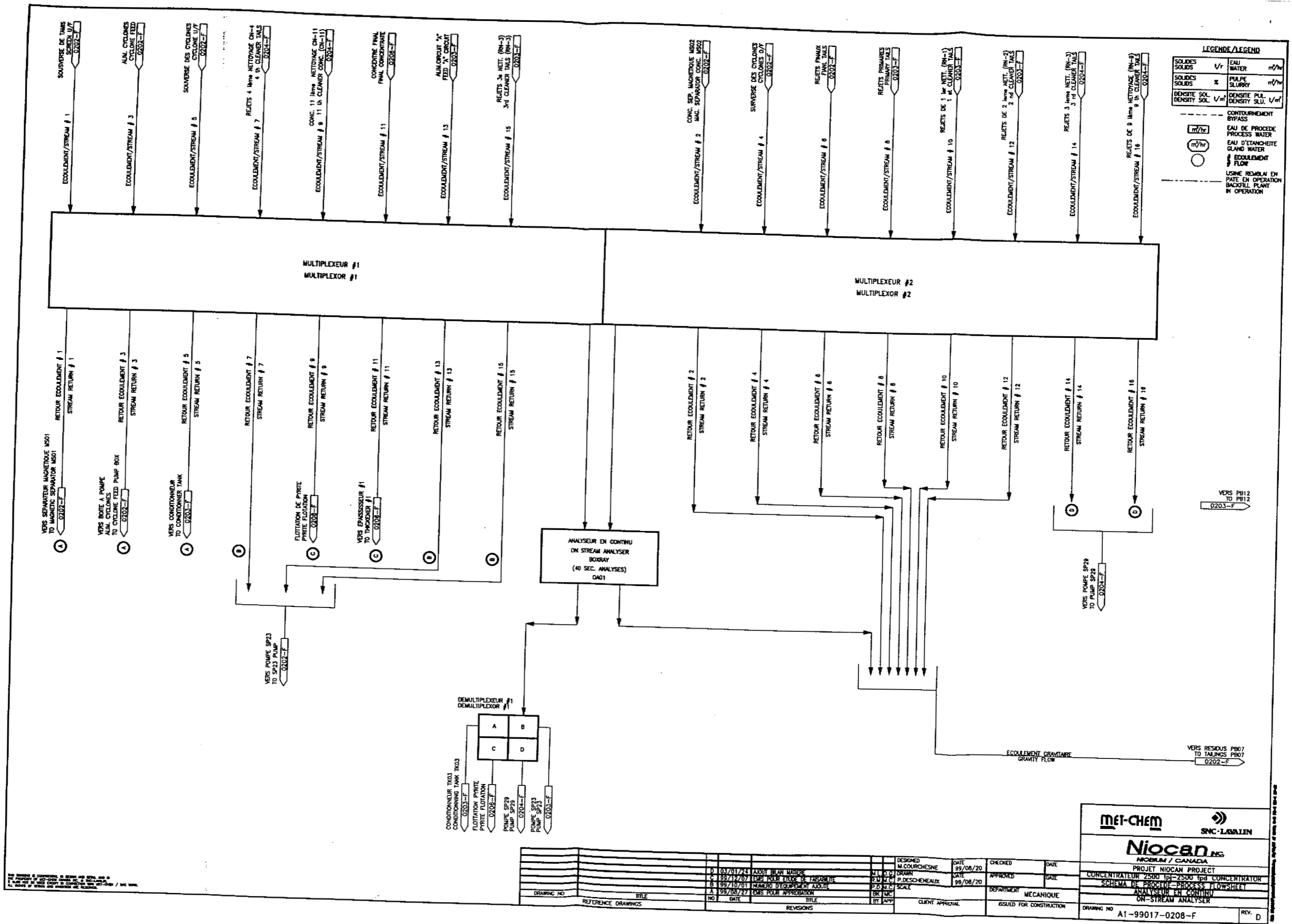
CONCENTRATEUR 25000p7/-25000pd CONCENTRATOR
 SCHEMA DE PROCEDE-PROCESS FLOWSHEET
 DISPOSITION DES RESIDUS ET RECIRCULATION D'EAU
 TAILINGS DISPOSAL SYSTEM AND RECLAIM WATER

DESIGNED: M.COURCHESNE DATE: 99/09/08
 DRAWN: P.DESCHENEAUX DATE: 99/09/08
 CHECKED: DATE: APPROVED: DATE: DEPARTMENT: MECANIQUE

ISSUED FOR CONSTRUCTION

DRAWING NO: A1-99017-0207-F REV. D

THIS DRAWING IS UNCONTROLLED. IT SHOULD BE USED ONLY AS A REFERENCE TO THE ORIGINAL DRAWING. THE ORIGINAL DRAWING IS STORED IN THE ARCHIVE. ALL REVISED AND APPROVED DRAWINGS WILL BE CONTROLLED BY THE ARCHIVE.



LEGENDE / LEGEND

SOLIDES SOLIDS	✓	EAU WATER	m ³ /hr
SOLIDES SOLIDS	x	PULPE SLURRY	m ³ /hr
DENSITE SOL. DENSITY SOL.	✓	DENSITE PUL. DENSITY SLU.	✓

--- CONTOURNEMENT BYPASS
 (m³/hr) EAU DE PROCÉDE PROCESS WATER
 (m³/hr) EAU D'ÉTANCHÉITE GLAND WATER
 (m³/hr) ÉCOULEMENT FLOW
 --- LISNE REMBLAI EN PÂTE EN OPERATION BACKFILL PLANT IN OPERATION

DESIGNED	M. COURCHESNE	DATE	99/08/20	CHECKED		DATE	
DRAWN		DATE		APPROVED		DATE	
SCALE		DATE	99/08/20	DEPARTMENT	MECANIQUE	ISSUED FOR CONSTRUCTION	

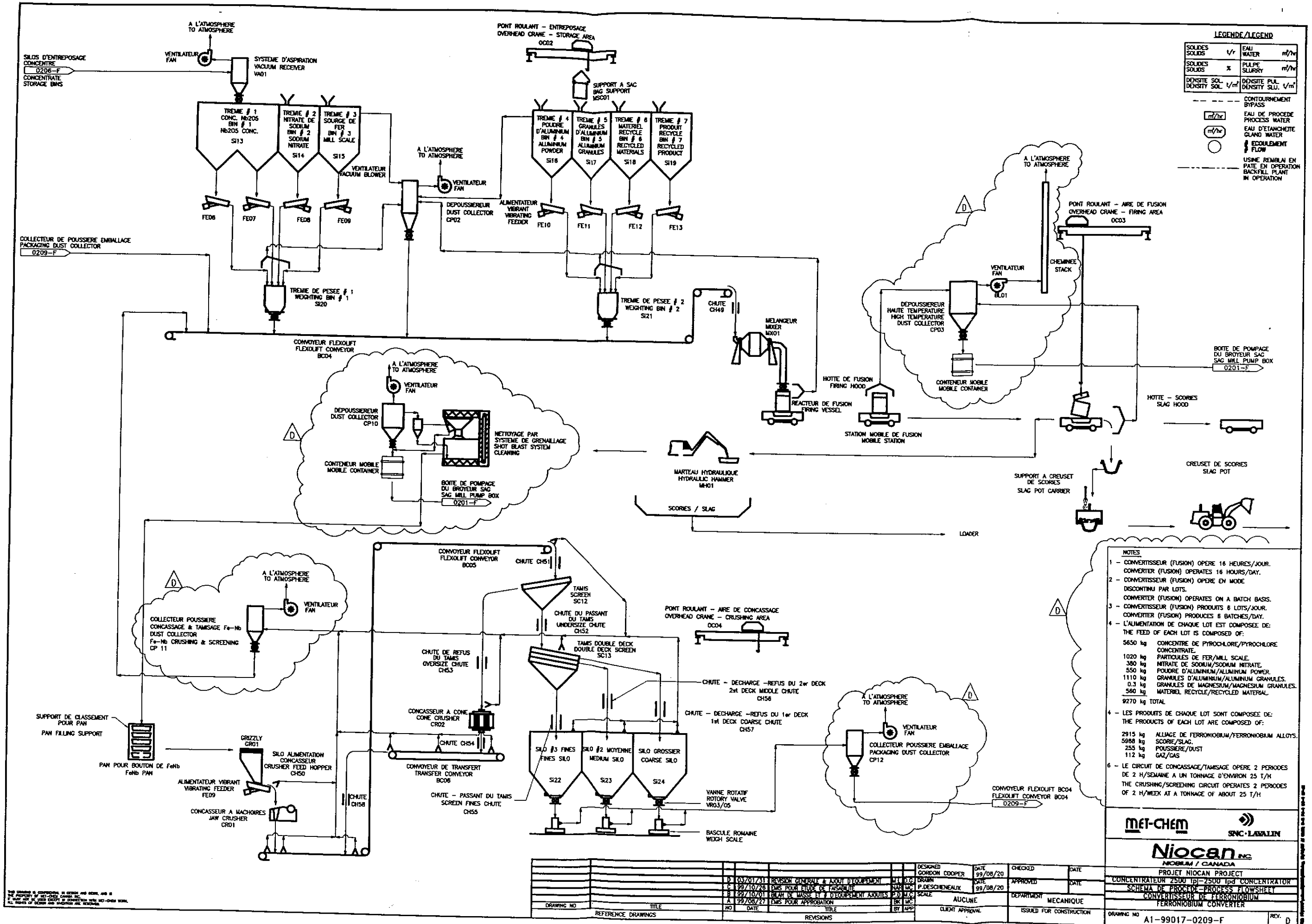
MEI-CHEM **SNC-LAVALIN**

Niocan INC.
 NIOCAN / CANADA

PROJET NIOCAN PROJECT
 CONCENTRATEUR 2500 TPD / 2500 TPD CONCENTRATOR
 SCHEMA DE PROCÉDE - PROCESS FLOWSHEET
 ANALYSEUR EN CONTINU
 ON-STREAM ANALYSER

DRAWING NO A1-99017-0208-F REV. D

NOTES: 1. THIS DRAWING IS THE PROPERTY OF NIOCAN INC. AND IS NOT TO BE REPRODUCED OR TRANSMITTED IN ANY FORM OR BY ANY MEANS, ELECTRONIC OR MECHANICAL, INCLUDING PHOTOCOPYING, RECORDING, OR BY ANY INFORMATION STORAGE AND RETRIEVAL SYSTEM, WITHOUT THE WRITTEN PERMISSION OF NIOCAN INC.



LEGENDE / LEGEND

SOLIDES	v/r	EAU	m ³ /hr
SOLIDES	x	PULPE	m ³ /hr
DENSITE SOL.	v/m ³	DENSITE PUL.	v/m ³

--- CONTOURNEMENT BYPASS
 (m³/hr) EAU DE PROCEDE PROCESS WATER
 (m³/hr) EAU D'ETANCHETE GLAND WATER
 (m³/hr) Ecoulement FLOW
 --- USINE REMPLI EN PATE EN OPERATION BACKFILL PLANT IN OPERATION

- NOTES**
- 1 - CONVERTISSEUR (FUSION) OPERE 16 HEURES/JOUR. CONVERTER (FUSION) OPERATES 16 HOURS/DAY.
 - 2 - CONVERTISSEUR (FUSION) OPERE EN MODE DISCONTINU PAR LOTS. CONVERTER (FUSION) OPERATES ON A BATCH BASIS.
 - 3 - CONVERTISSEUR (FUSION) PRODUITS 6 BATCHES/JOUR. CONVERTER (FUSION) PRODUCES 6 BATCHES/DAY.
 - 4 - L'ALIMENTATION DE CHAQUE LOT EST COMPOSEE DE:
 5650 kg CONCENTRE DE PYROCHLORE/PYROCHLORE CONCENTRATE
 1020 kg PARTICULES DE FER/MILL SCALE
 380 kg NITRATE DE SODIUM/SODIUM NITRATE
 550 kg POUVRE D'ALUMINIUM/ALUMINUM POWDER
 1110 kg GRANULES D'ALUMINIUM/ALUMINUM GRANULES
 0.3 kg GRANULES DE MAGNESIUM/MAGNESIUM GRANULES
 580 kg MATERIEL RECYCLE/RECYCLED MATERIAL
 9270 kg TOTAL
 - 4 - LES PRODUITS DE CHAQUE LOT SONT COMPOSES DE:
 THE PRODUCTS OF EACH LOT ARE COMPOSED OF:
 2915 kg ALLIAGE DE FERRONIUMIUM/FERRONIUMIUM ALLOYS
 5988 kg SCORE/SLAG
 255 kg POUSSIERE/DUST
 112 kg GAZ/GAS
 - 6 - LE CIRCUIT DE CONCASSAGE/TAMISAGE OPERE 2 PERIODES DE 2 H/SEMAINE A UN TONNAGE D'ENVIRON 25 T/H
 THE CRUSHING/SCREENING CIRCUIT OPERATES 2 PERIODS OF 2 H/WEEK AT A TONNAGE OF ABOUT 25 T/H

MEI-CHEM **SNC-LAVALIN**

Niocan INC.
 NIONIUM / CANADA

PROJET NIOCAN PROJECT
 CONCENTRATEUR 2500 tpd - 2500 tpd CONCENTRATOR
 SCHEMA DE PROCEDE - PROCESS FLOW SHEET
 CONVERTISSEUR DE FERRONIUMIUM
 FERRONIUMIUM CONVERTER

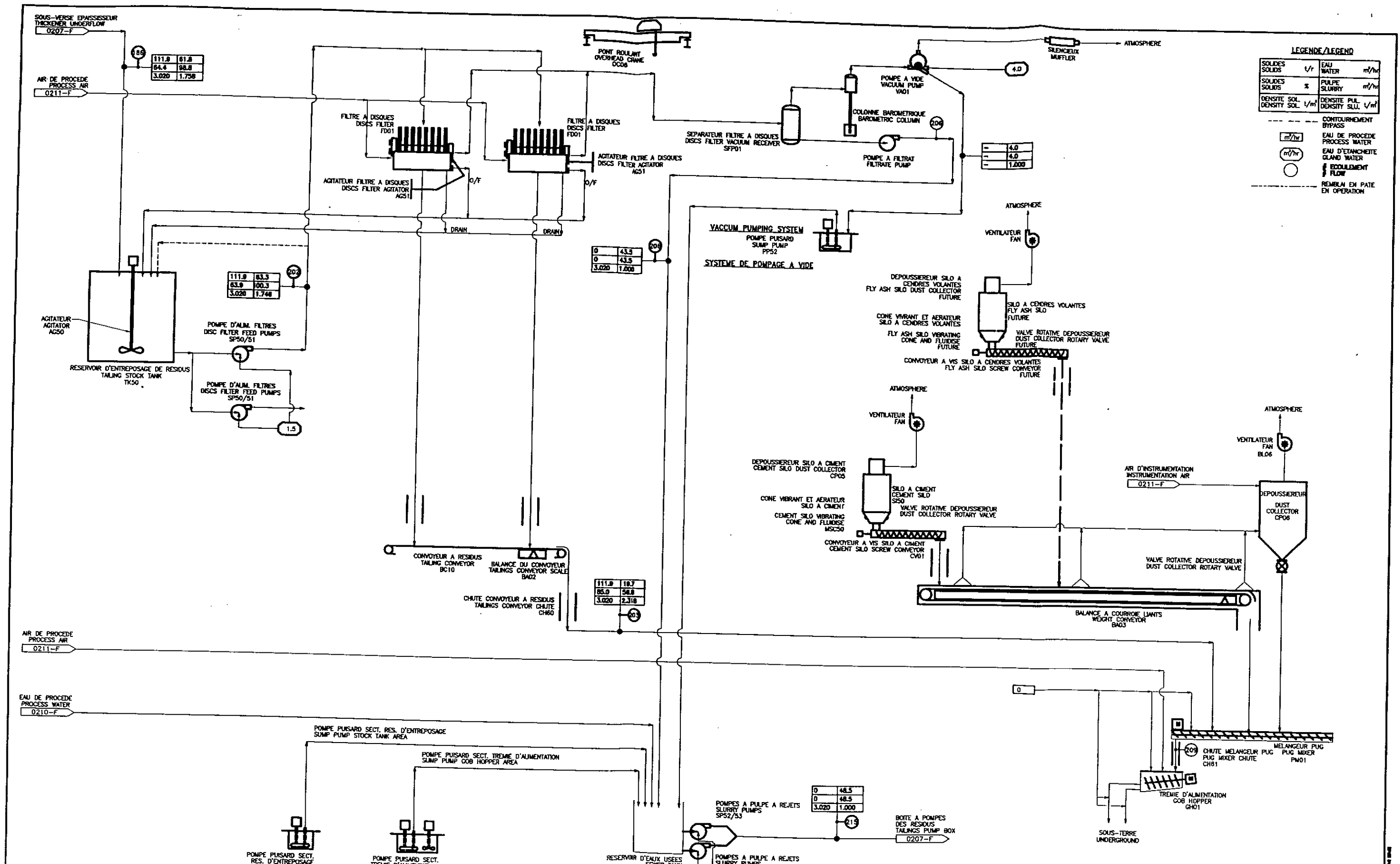
DESIGNED	GORDON COOPER	DATE	99/08/20	CHECKED	DATE
DRAWN	P. DESCHENEALUX	DATE	99/08/20	APPROVED	DATE

CLIENT APPROVAL ISSUED FOR CONSTRUCTION

DRAWING NO. A1-99017-0209-F REV. D

DRAWING NO.	TITLE	NO.	DATE	TITLE	BY	APP.

THIS DRAWING IS THE PROPERTY OF MEI-CHEM AND SHALL REMAIN THE PROPERTY OF MEI-CHEM. IT IS NOT TO BE REPRODUCED OR TRANSMITTED IN ANY FORM OR BY ANY MEANS, ELECTRONIC OR MECHANICAL, INCLUDING PHOTOCOPYING, RECORDING, OR BY ANY INFORMATION STORAGE AND RETRIEVAL SYSTEM. ALL RIGHTS OF DESIGN AND INVENTION ARE RESERVED.



THE DRAWING IS THE PROPERTY OF NIOCAN INC. AND IS NOT TO BE REPRODUCED OR TRANSMITTED IN ANY FORM OR BY ANY MEANS, ELECTRONIC OR MECHANICAL, INCLUDING PHOTOCOPYING, RECORDING, OR BY ANY INFORMATION STORAGE AND RETRIEVAL SYSTEM. ALL RIGHTS OF DESIGN AND INVENTION ARE RESERVED.

DRAWING NO	TITLE	NO	DATE	BY	APP	CLIENT APPROVAL
	REFERENCE DRAWINGS					

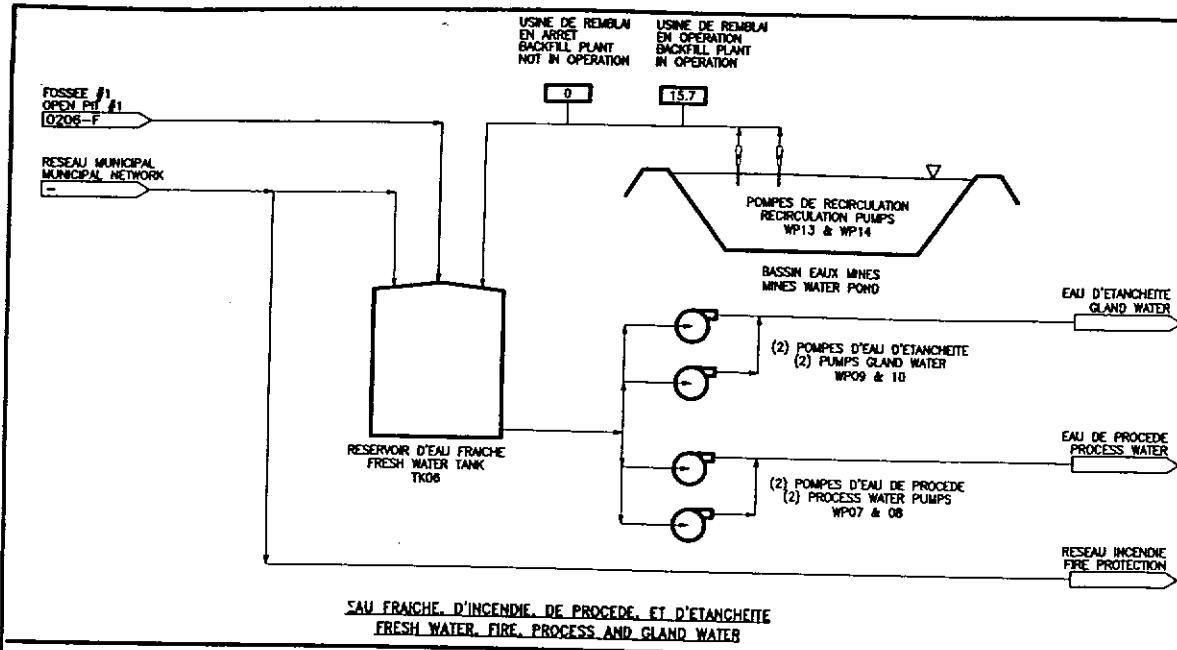
DESIGNED	DATE	CHECKED	DATE
F. VILLENEUVE	99/06/20		
N. RAMETKINS	99/06/20		

MEI-CHEM **SNC-LABALIN**

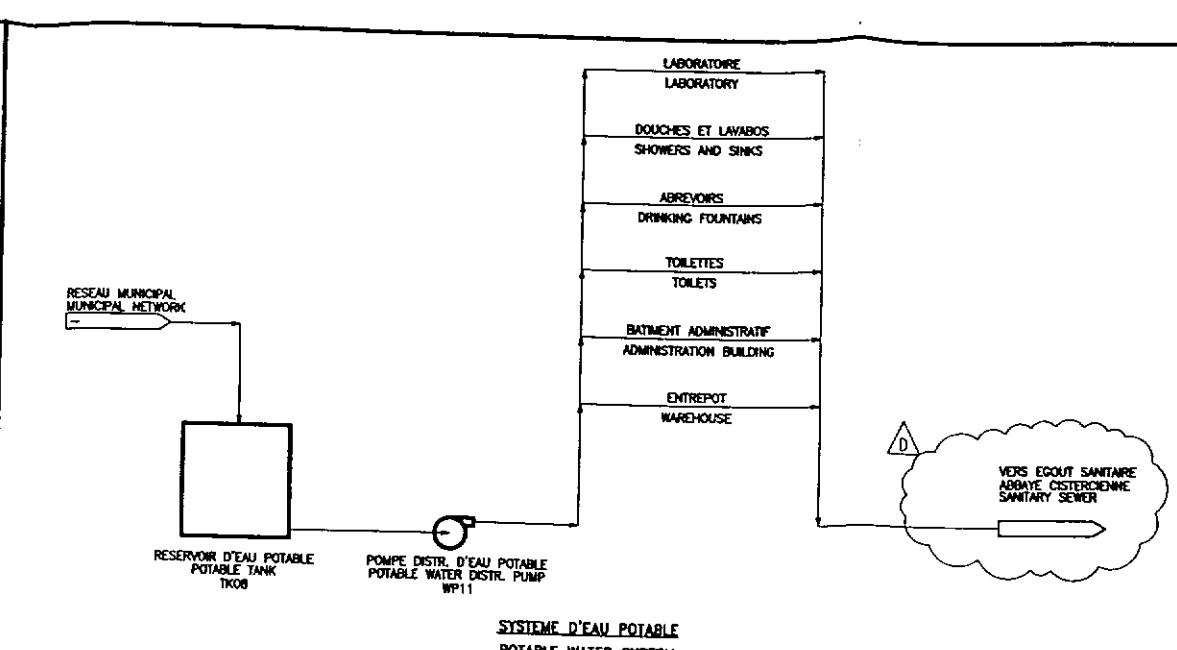
Niocan INC.
 NIOLUM / CANADA

PROJET NIOCAN PROJECT
 CONCENTRATEUR 25000t/j - 25000t/j CONCENTRATOR
 SCHEMA DE PROCEDE - PROCESS FLOWSHEET
 CIRCUIT DE REMBLAI EN PATE
 PASTE BACKFILL CIRCUIT

DRAWING NO **A1-99017-0210-F** REV. **D**



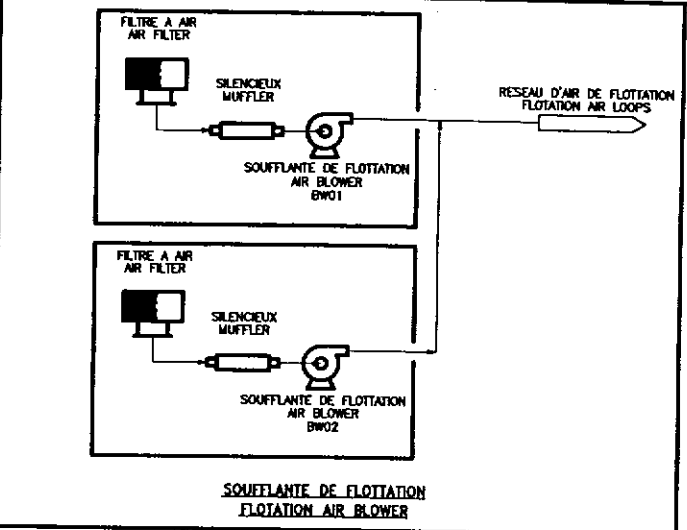
EAU FRAICHE, D'INCENDIE, DE PROCEDE, ET D'ETANCHETTE
FRESH WATER, FIRE, PROCESS AND GLAND WATER



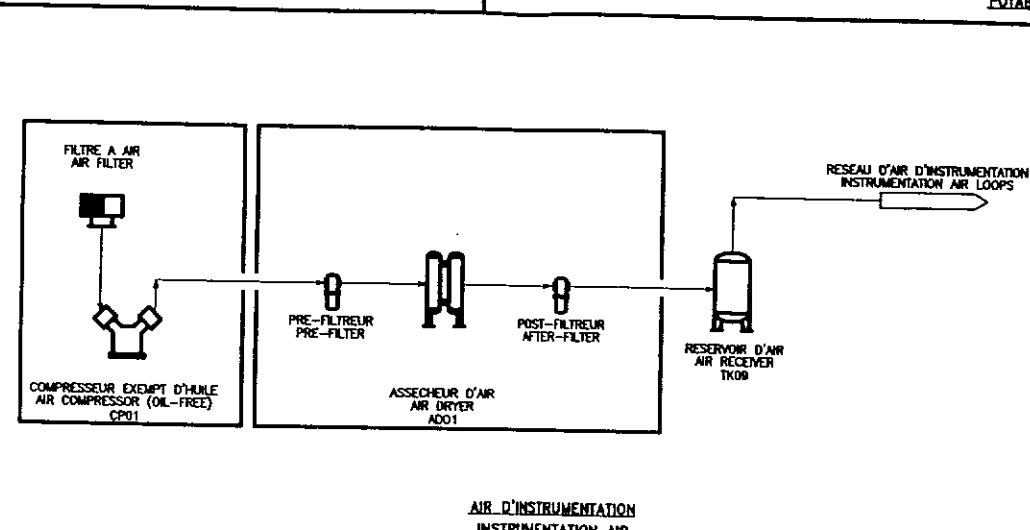
SYSTEME D'EAU POTABLE
POTABLE WATER SYSTEM

LEGENDE / LEGEND

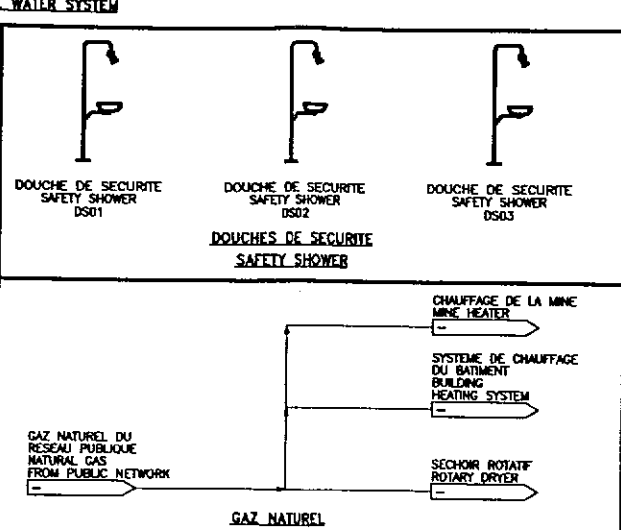
SOLIDES SOLIDS	1/2	EAU WATER	m ³ /hr
SOLIDES SOLIDS	x	PULPE SLURRY	m ³ /hr
DENSITE SOL. DENSITY SOL.	1/m ³	DENSITE PUL. DENSITY SLU.	1/m ³
--- CONTOURNEMENT BYPASS			
[Symbol] EAU DE PROCEDE PROCESS WATER			
[Symbol] EAU D'ETANCHETTE GLAND WATER			
[Symbol] ECOULEMENT FLOW			
[Symbol] REMBLAI EN PATE EN OPERATION			



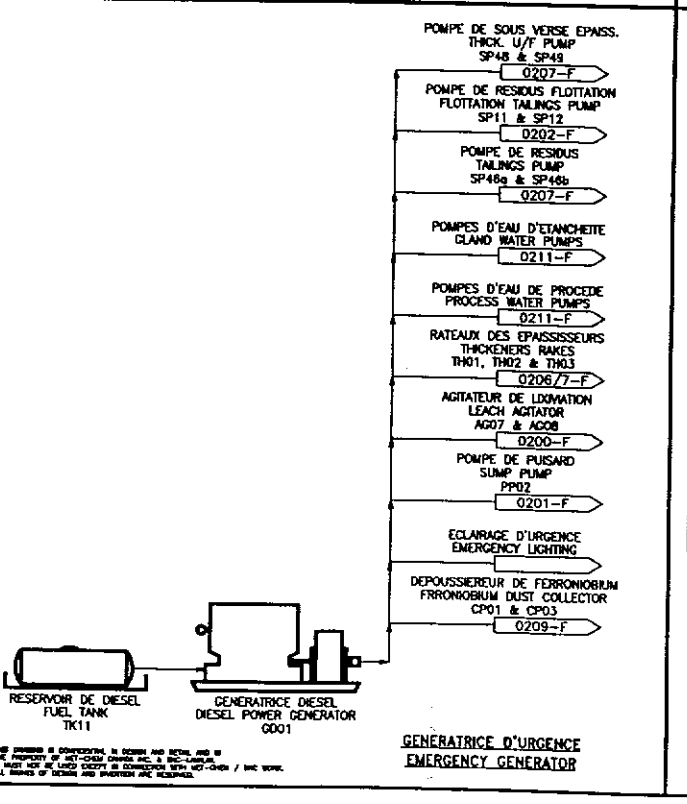
SOUFFLANTE DE FLOTTATION
FLOTATION AIR BLOWER



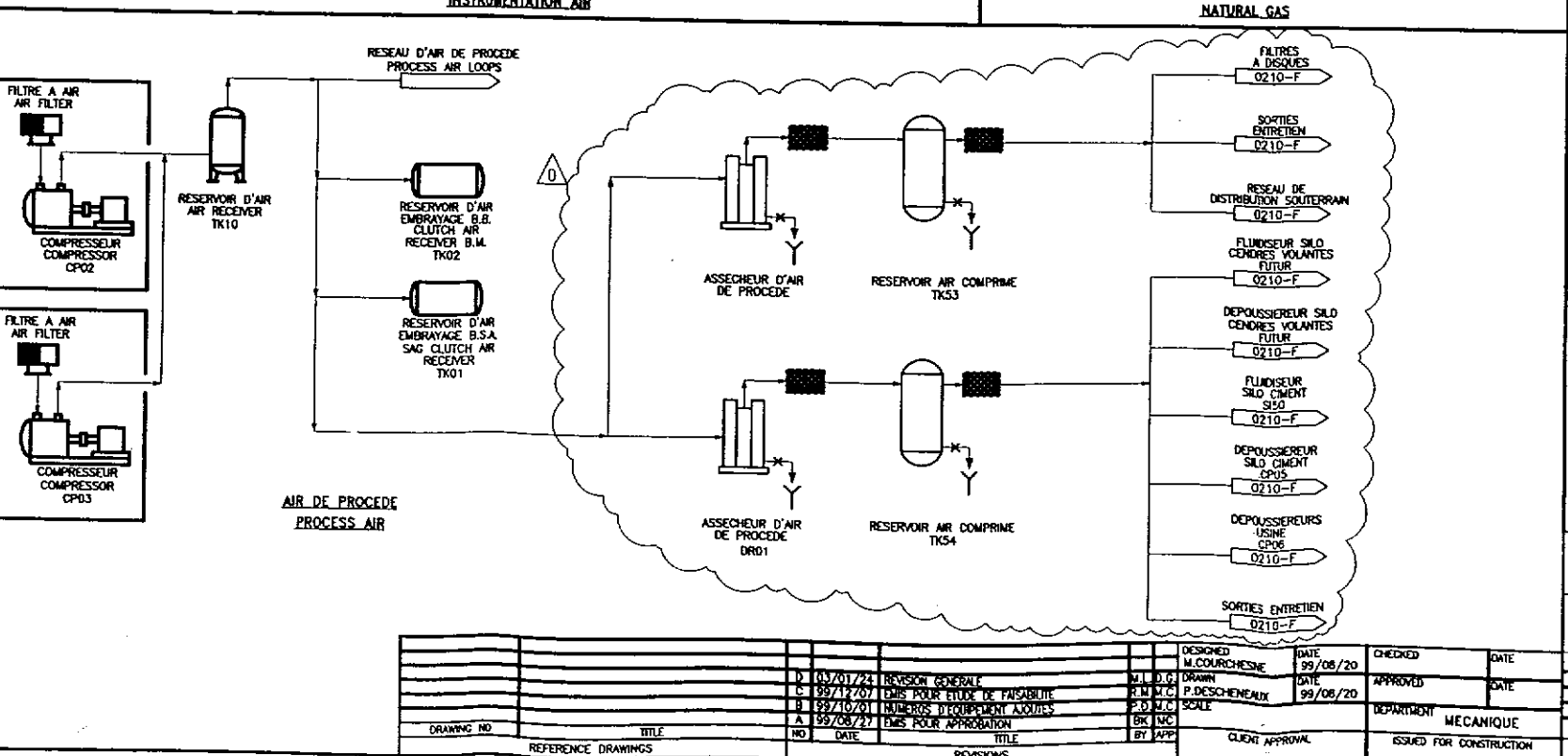
AIR D'INSTRUMENTATION
INSTRUMENTATION AIR



GAZ NATUREL
NATURAL GAS



GENERATRICE D'URGENCE
EMERGENCY GENERATOR



AIR DE PROCEDE
PROCESS AIR

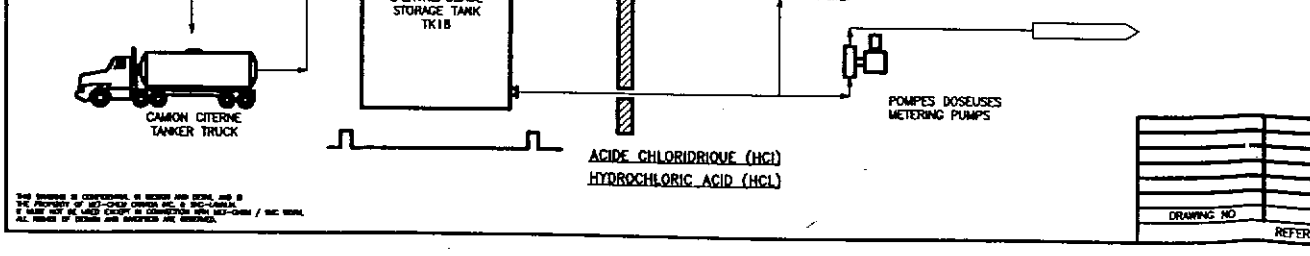
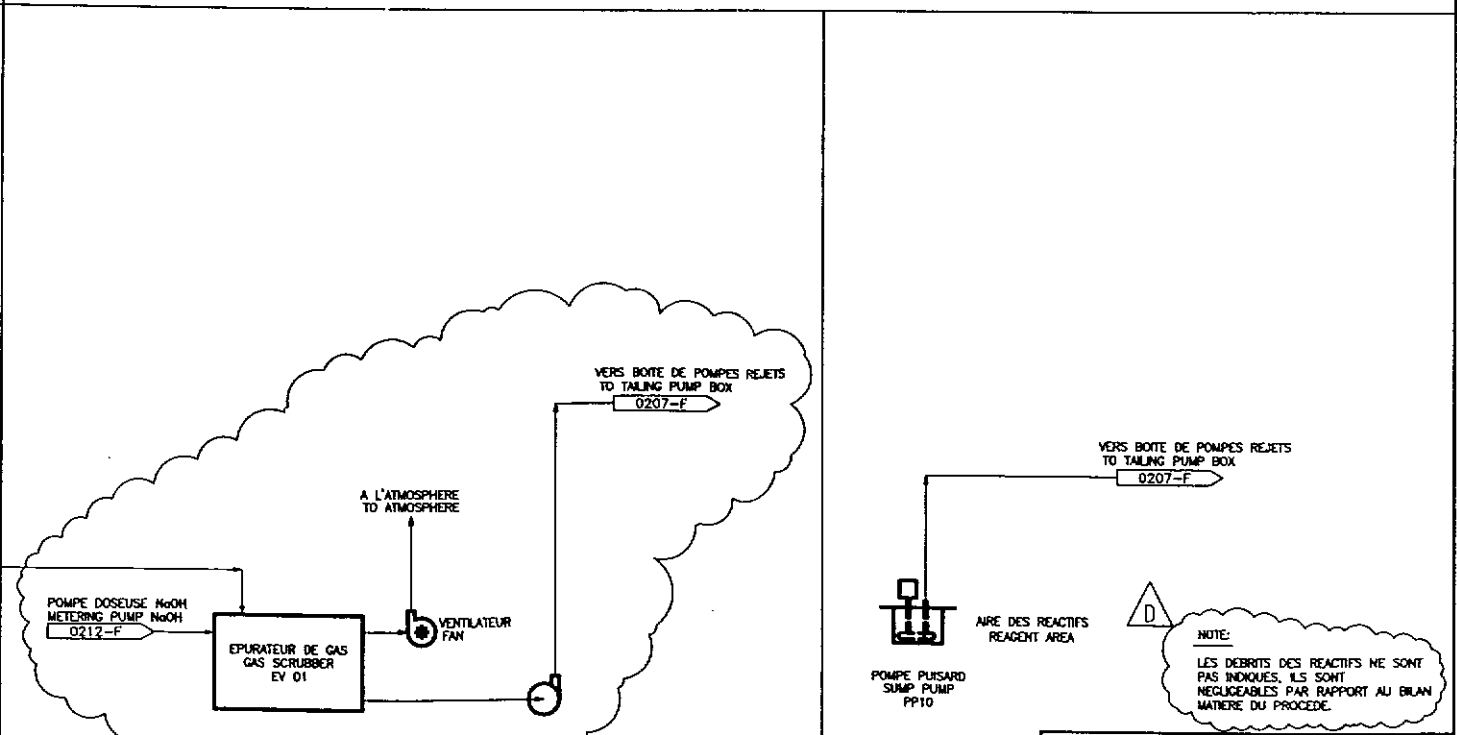
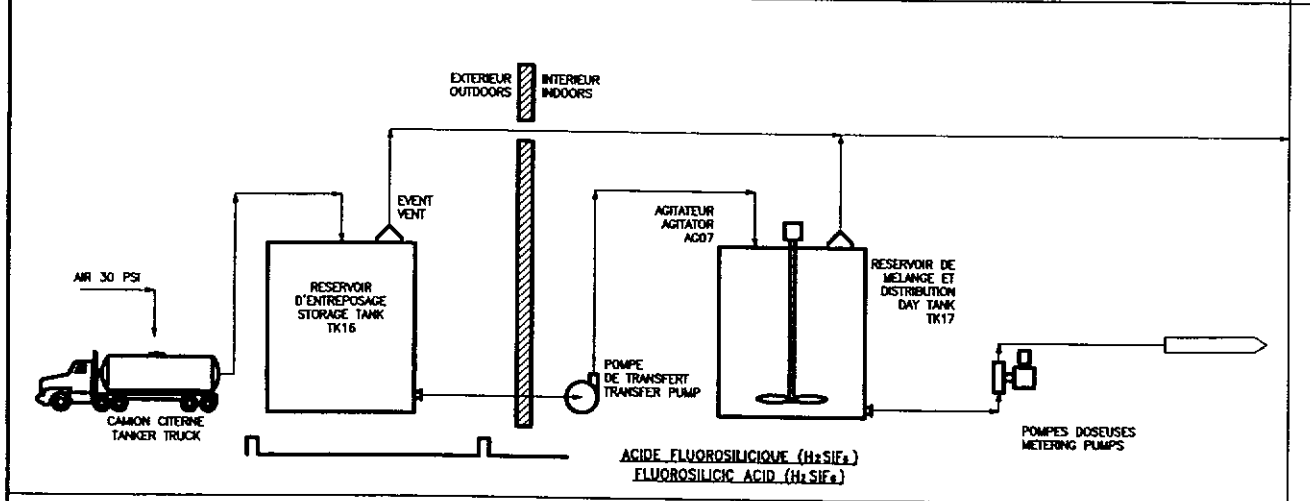
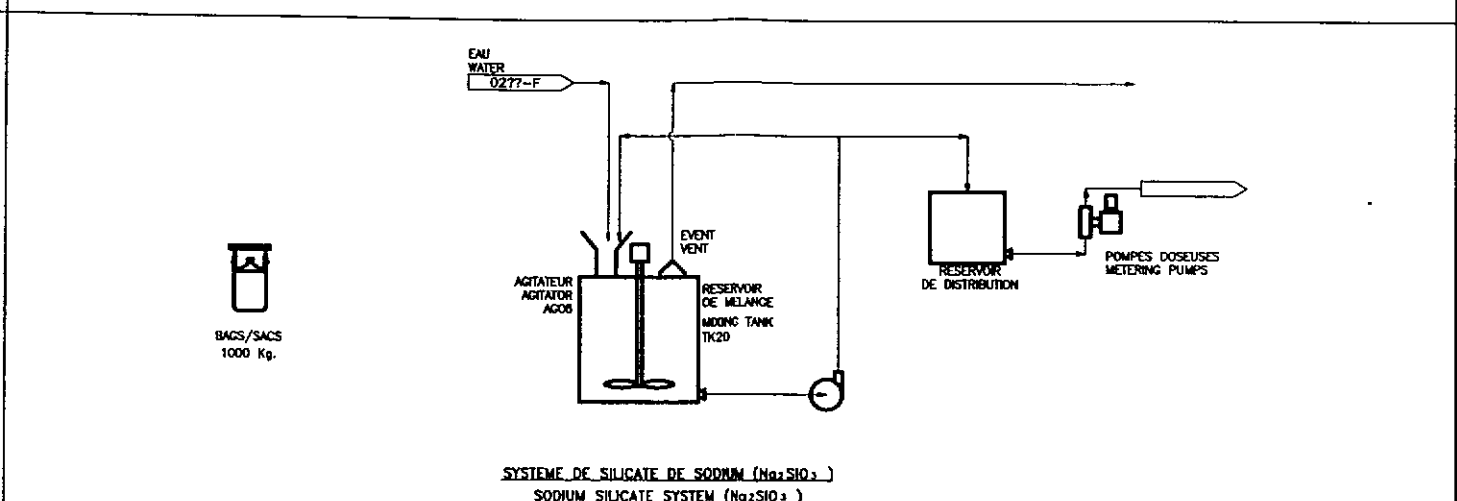
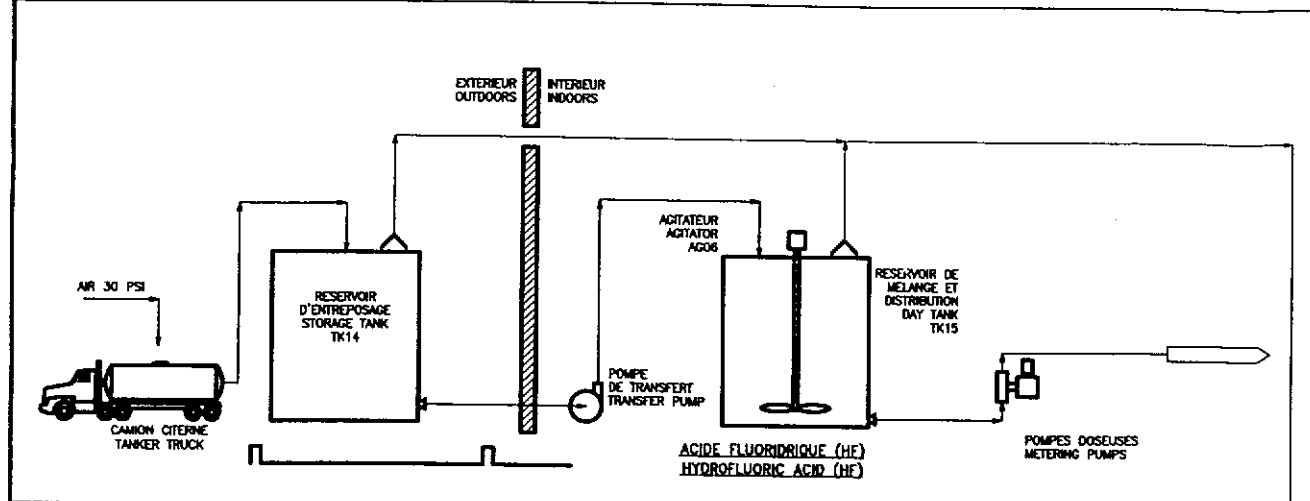
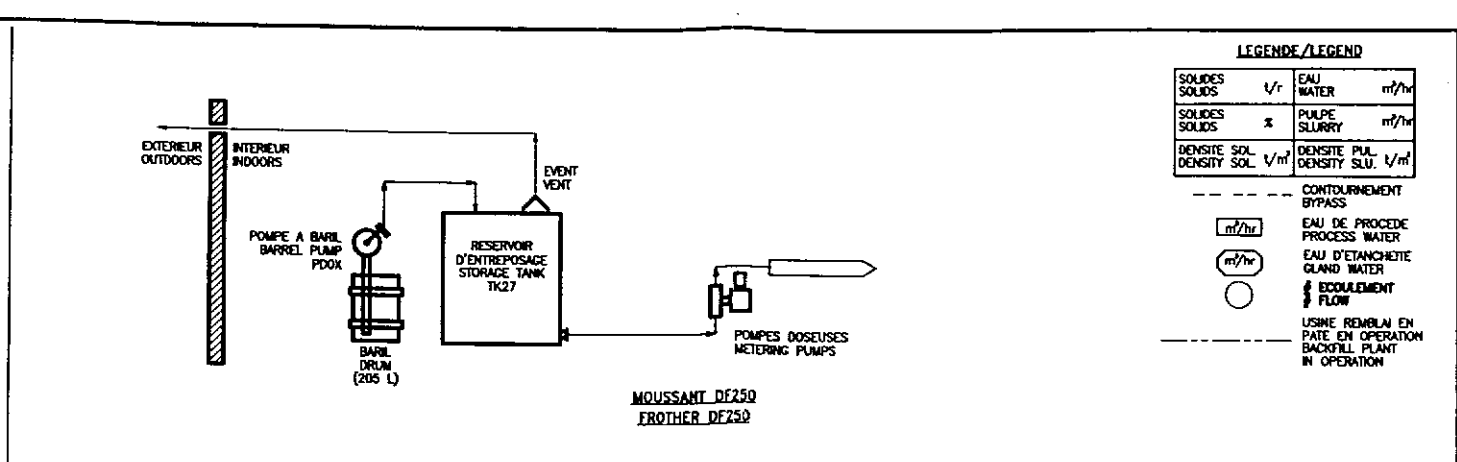
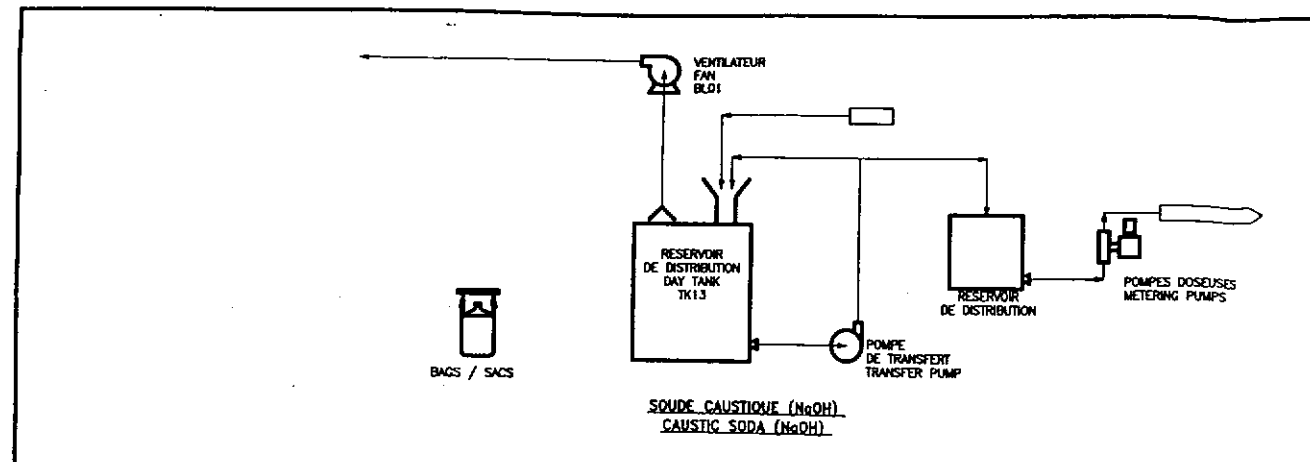
DESIGNED	M. COURCHESNE	DATE	99/08/20	CHECKED		DATE	
DRAWN	P. DESCHENEUX	DATE	99/08/20	APPROVED		DATE	
REVISION	GENERAL	DATE		DEPARTMENT	MECANIQUE	ISSUED FOR CONSTRUCTION	
REVISION	EMIS POUR ETUDE DE FAISABILITE	DATE		CLIENT APPROVAL		ISSUED FOR CONSTRUCTION	
REVISION	EMIS POUR EQUIPEMENT AJOUTES	DATE		CLIENT APPROVAL		ISSUED FOR CONSTRUCTION	
REVISION	EMIS POUR APPROBATION	DATE		CLIENT APPROVAL		ISSUED FOR CONSTRUCTION	

MEI-CHEM SNC-LAVALLIN

Niocan INC.
NIOCAN / CANADA

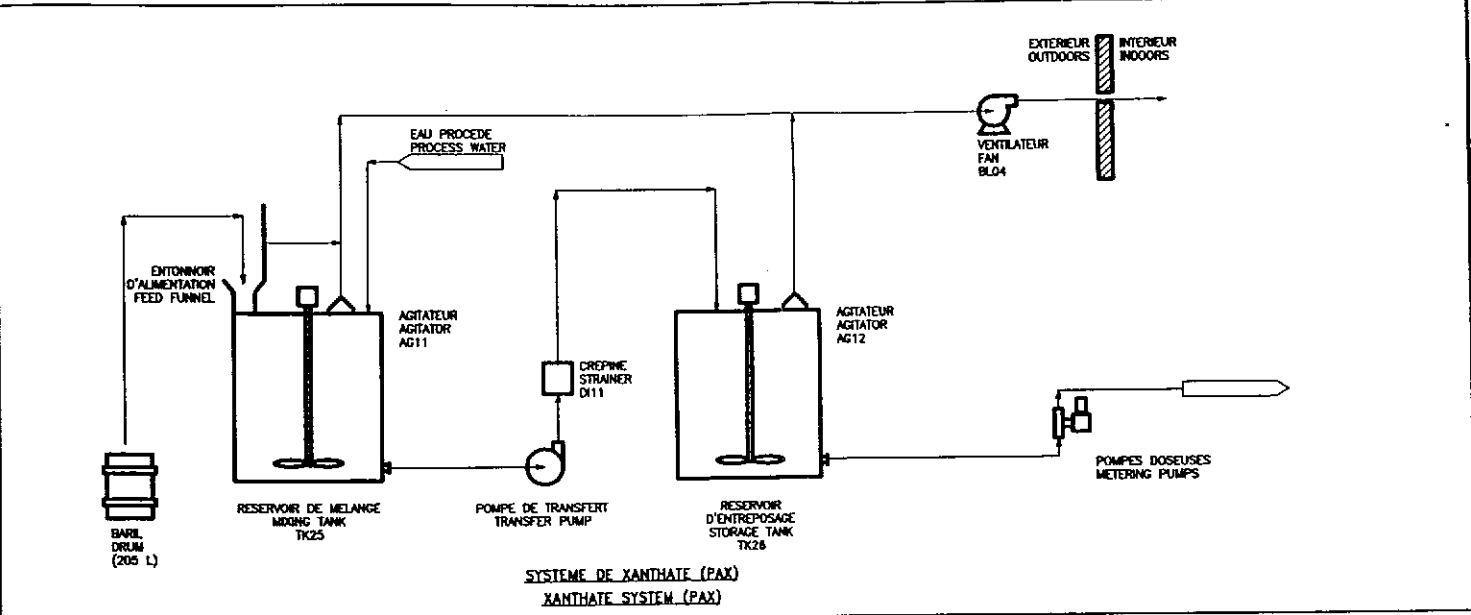
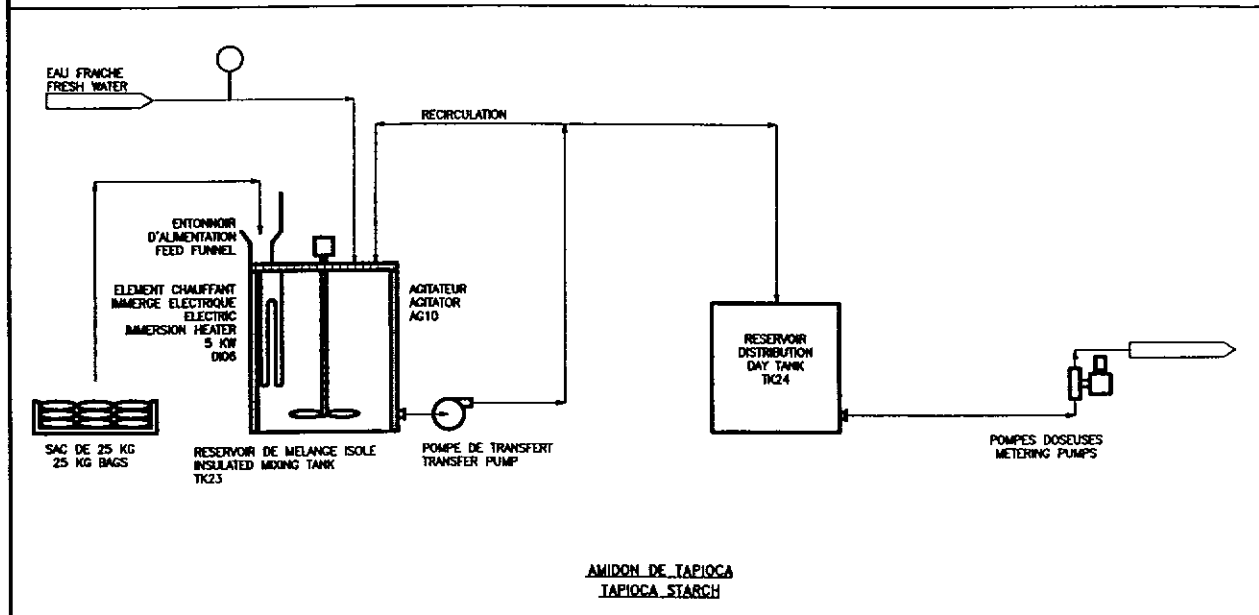
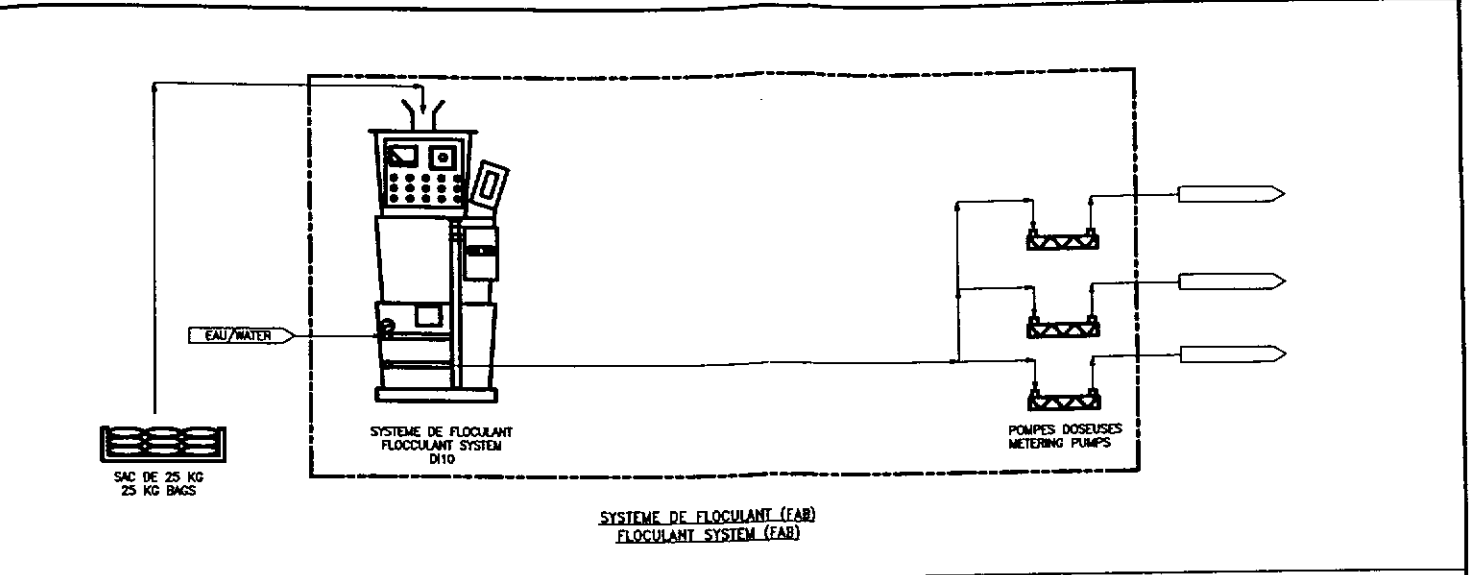
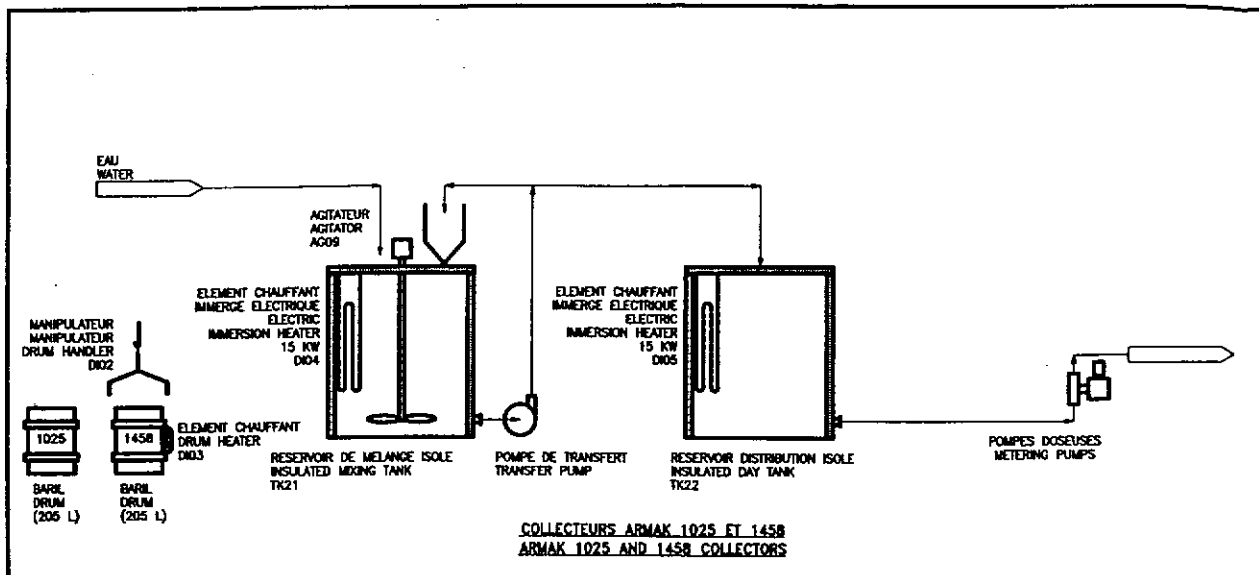
PROJET NIOCAN PROJECT
CONCENTRATEUR 2500tp/d - 2500tp/d CONCENTRATOR
SCHEMA DE PROCEDE - PROCESS FLOWSHEET
UTILITES SERVICES

DRAWING NO A1-99017-0211-F REV. 0



DESIGNED	M. COURCHESNE	DATE	99/08/20	CHECKED		DATE	
DRAWN	P. DESCHENEVAUX	DATE	99/08/20	APPROVED		DATE	
SCALE		DEPARTMENT	MECANIQUE	ISSUED FOR CONSTRUCTION		DRAWING NO.	A1-99017-0212-F
CLIENT APPROVAL		ISSUED FOR CONSTRUCTION		DRAWING NO.	A1-99017-0212-F	REV.	D

THE INFORMATION CONTAINED HEREIN IS UNCLASSIFIED EXCEPT WHERE SHOWN OTHERWISE. IT IS THE PROPERTY OF SNC-LABLIN AND IS NOT TO BE REPRODUCED OR TRANSMITTED IN ANY FORM OR BY ANY MEANS, ELECTRONIC OR MECHANICAL, INCLUDING PHOTOCOPYING, RECORDING, OR BY ANY INFORMATION STORAGE AND RETRIEVAL SYSTEM.



LEGENDE/LEGEND

SOLIDES SOLIDS	✓/r	EAU WATER	m ³ /hr
SOLIDES SOLIDS	x	PULPE SLURRY	m ³ /hr
DENSITE SOL. DENSITY SOL.	✓/m ³	DENSITE PUL. DENSITY SLU.	✓/m ³

--- COUVERNEMENT BYPASS

○ m³/hr EAU DE PROCEDE PROCESS WATER

○ m³/hr EAU D'ETANCHEITE GLAND WATER

○ EDOULEMENT FLOW

--- USINE REMBLAI EN PATE EN OPERATION BACKFILL PLANT IN OPERATION

NOTE:
LES DEBRIS DES REACTIFS NE SONT PAS INDIQUEES, ILS SONT NEGLIGEABLES PAR RAPPORT AU BILAN MATIERE DU PROCEDE.

met-chem **SNC-LAMALIN**

Niocan INC.
NIOBUM / CANADA

PROJET NIOCAN PROJECT
CONCENTRATEUR ZS001P-ZS001S CONCENTRATOR
SCHEMA DE PROCEDE-PROCESS FLOWSHEET
ENTREPOSAGE ET PREPARATION DES REACTIFS-E-2/2
STORAGE AND REAGENT PREPARATION-S.2/2

DESIGNED M. COURCHESNE DATE 99/06/20 CHECKED DATE
DRAWN P. DESCHENEUX DATE 99/06/20 APPROVED DATE
SCALE DEPARTMENT MECANIQUE
CLIENT APPROVAL ISSUED FOR CONSTRUCTION DRAWING NO A1-99017-0213-F REV. D

DRAWING NO.	TITLE	NO.	DATE	TITLE	BY	APP.

THIS DRAWING IS CONFIDENTIAL IN CHARACTER AND SHALL REMAIN SO. IT IS NOT TO BE REPRODUCED OR TRANSMITTED IN ANY FORM OR BY ANY MEANS, ELECTRONIC OR MECHANICAL, INCLUDING PHOTOCOPYING, RECORDING, OR BY ANY INFORMATION STORAGE AND RETRIEVAL SYSTEM. WITHOUT THE WRITTEN PERMISSION OF MET-CHEM / SNC-LAMALIN.