



301

DA20

Projet d'ouverture et d'exploitation d'une mine
d'apatite à Sept-Îles

6211-08-009

Un projet concret, moderne et structurant



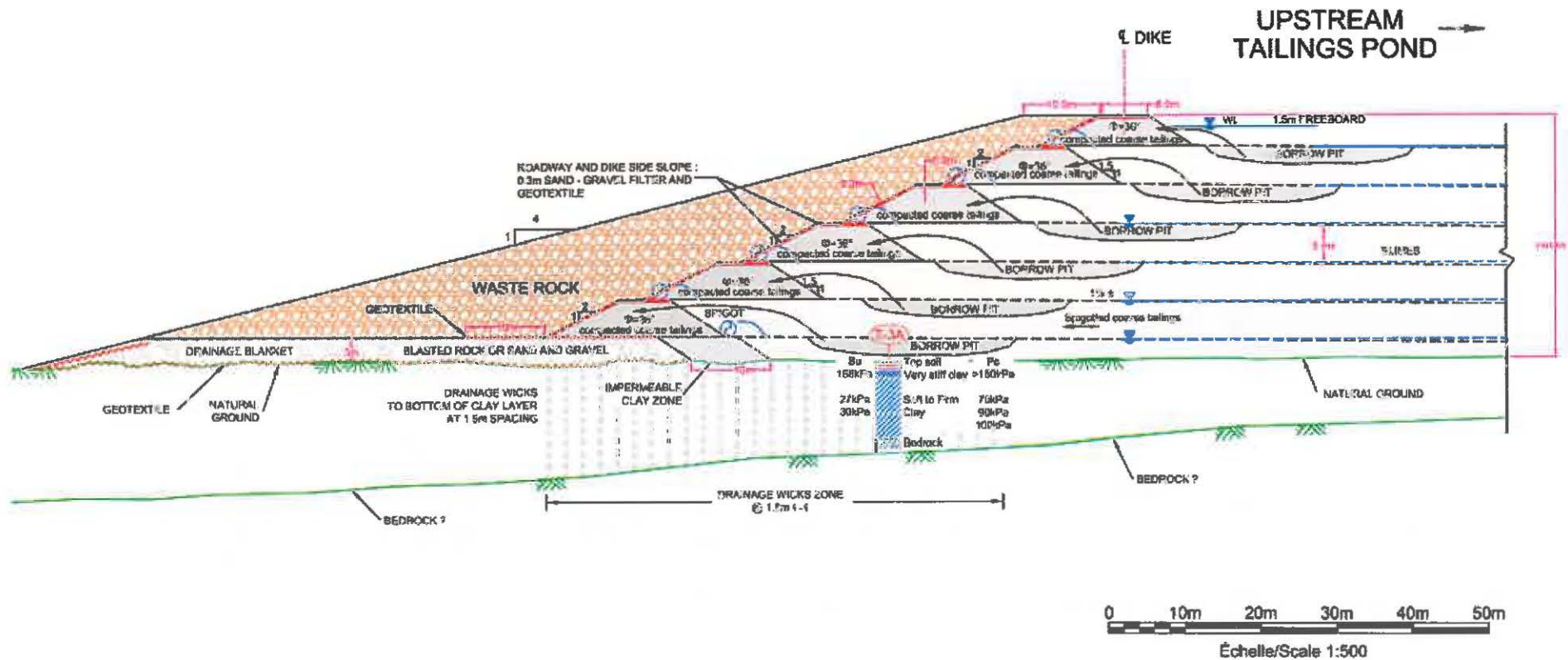
Mine Arnaud

Construction des digues

Construction sur fondation d'argile

Pente 4/1

DIKE - TYPE 1 TYPICAL SECTION



NOTE: UNLESS OTHERWISE SPECIFIED, ALL DIMENSIONS ARE IN METERS.



DIKE - TYPE 1
TYPICAL SECTION
FEASIBILITY STUDY
ARNAUD MINE
SEPT-LES, QUEBEC

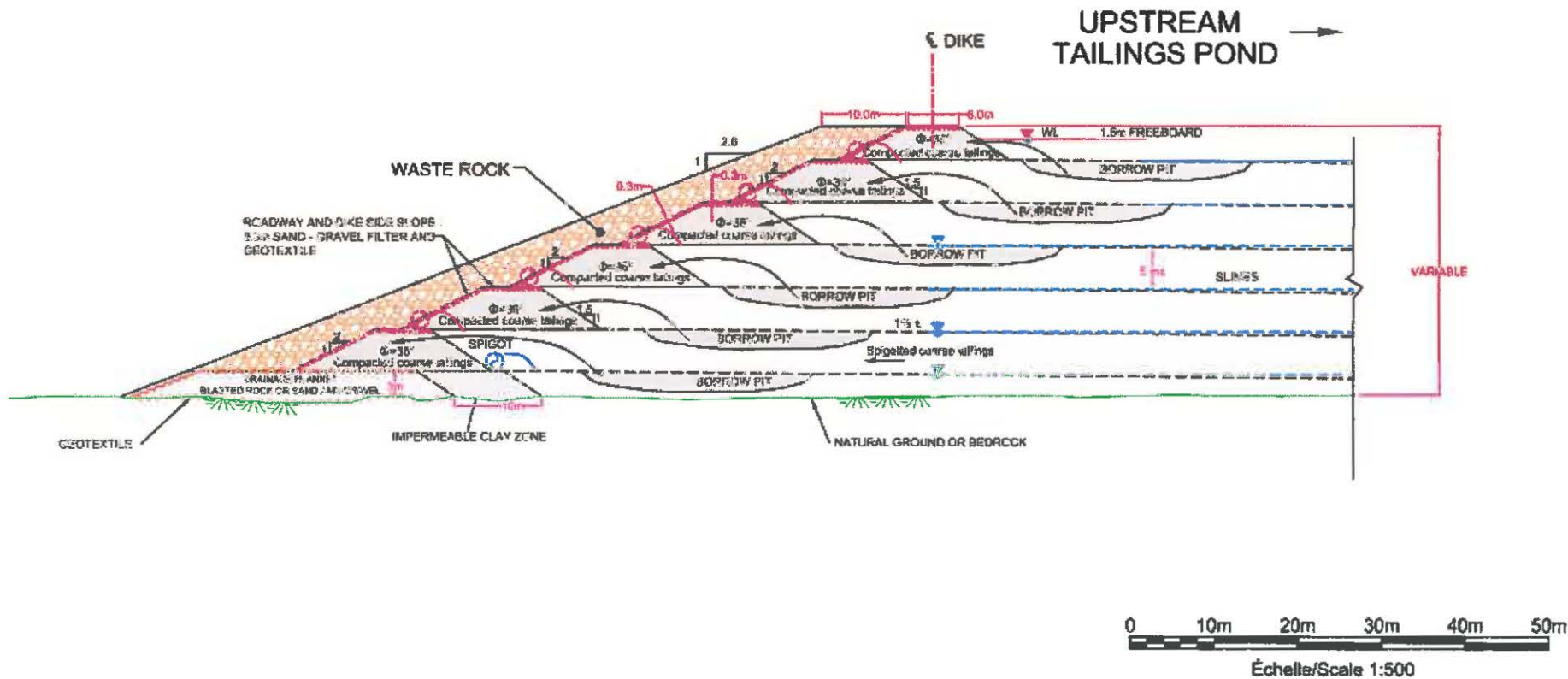
SCALE: 1:500
DRAWN BY: CS
PROPOSED BY: MS
APPROVED BY: RC

JOURNEAUX ASSOC.
801, Boulevard, Pointe-Claire, QC H9R 1A4
Tél: 438-4999 • Fax: 438-4997
info@journeauxassoc.com

DATE: 05/12/2014 PROJECT NO: L1411-12 SHEET: 9

Construction sur fondation solide/roc

DIKE - TYPE 2 TYPICAL SECTION



35 OTHERWISE SPECIFIED, ALL DIMENSIONS ARE IN METERS

Aurenco
ROCHE Sandwell

DIKE - TYPE 2
 TYPICAL SECTION
 FEASIBILITY STUDY
 ARNAUD MINE
 SEPT-ÎLES, QUEBEC

SCALE:	1:500
DRAWN BY:	SC
PROJECTED BY:	NE
APPROVED BY:	NR

JOURNEAUX ASSOC.
 801, Boulevard, Pointe-Claire, QC H9R 4K6
 T 514-498-4997 • F 514-498-4997
 info@journeauxassoc.com