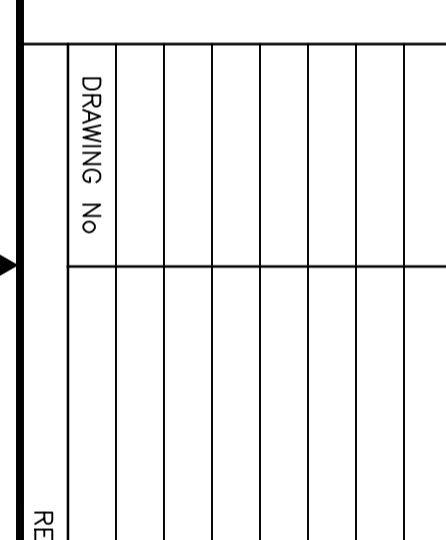
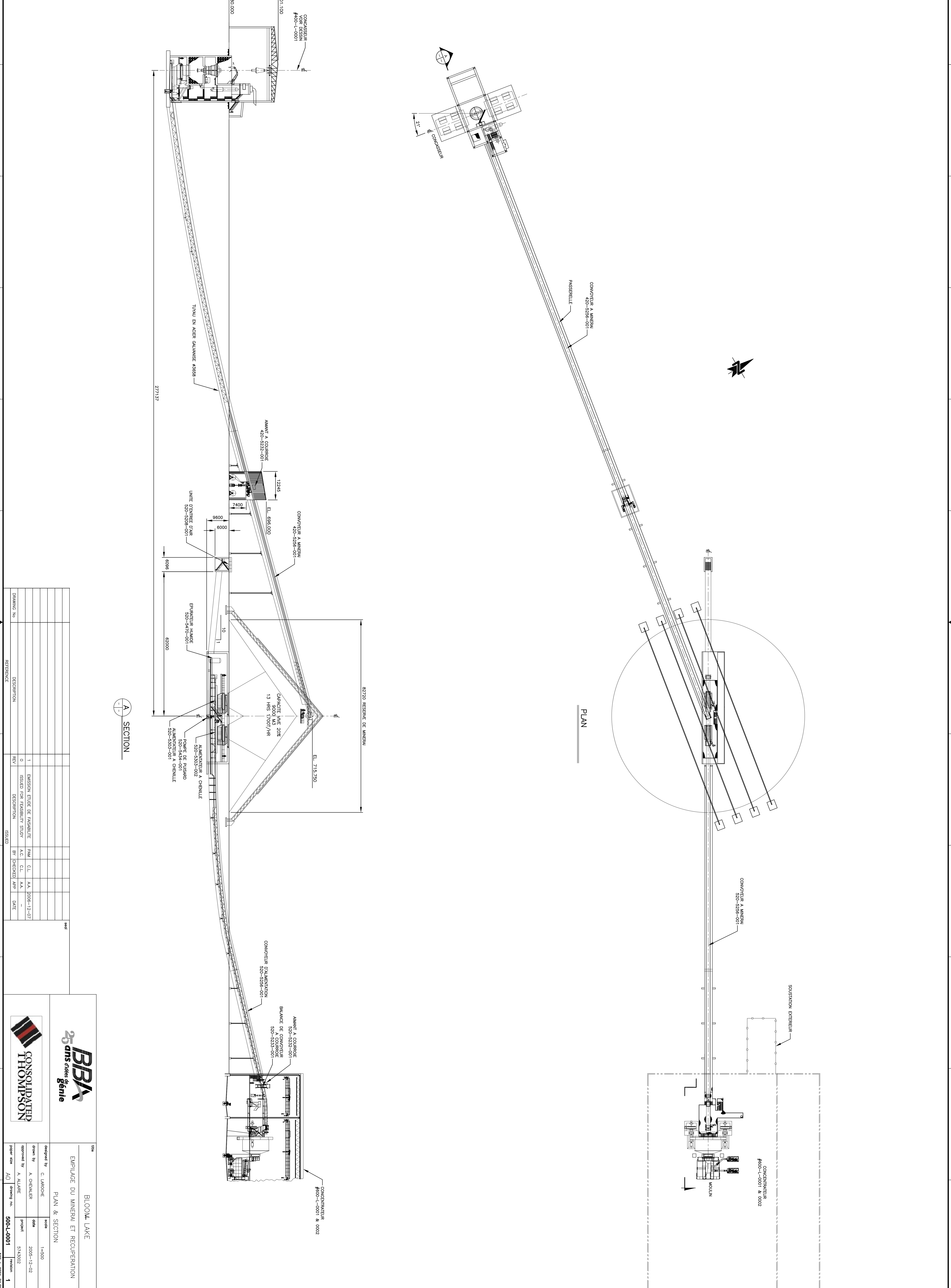


**E Dessin 500-L-0001**





REV	DESCRIPTION	ISSUED	DATE
1	EMISSION ETUDE DE PROJET	P.M.	C.L.
0	ISSUED FOR FEASIBILITY STUDY	A.C.	C.L.

**BBA**  
 25 ans d'expérience  
 CONSOLIDATED THOMPSON

**BLOOM LAKE**  
 EMPLACEMENT DU MINERAL ET RECUPERATION  
 PLAN & SECTION

Scale: 1:500  
 Date: 2005-12-02  
 Project: 5743002

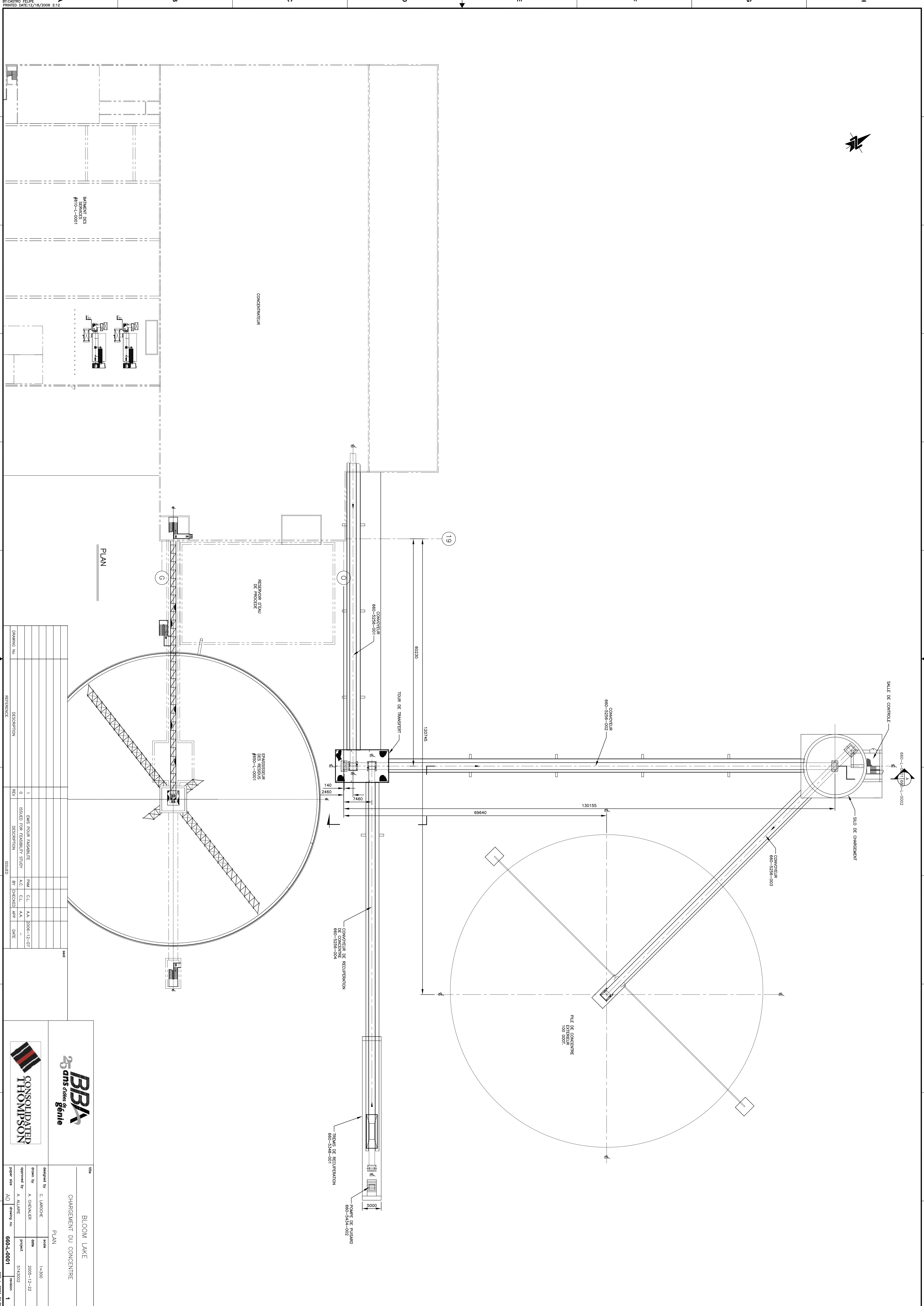
Drawn by: A. CHENIER  
 Checked by: A. ALLARD  
 Project: 5743002

Scale: 1:500  
 Date: 2005-12-02  
 Project: 5743002



**F Dessin 660-L-0001**





REV	DESCRIPTION	ISSUED	DATE
1	DANS POUR PASSEUR	P.M.	C.L. A.A. 2004-12-07
0	ISSUED FOR FABRICITY STUDY	A.C.	C.L. A.A. --
0	DESCRIPTION	BT	CHECKED APP? --

**BBA**  
25 ans d'âge de Santé

**CONSOLIDATED THOMPSON**

---

BLOOM LAKE  
CHARGEMENT DU CONCENTRE

PLAN

designed by C. LAROCHE drawn by A. CHENIER approved by A. ALLARD	scale 1:300 date 2005-12-22 project 5743002
---	--

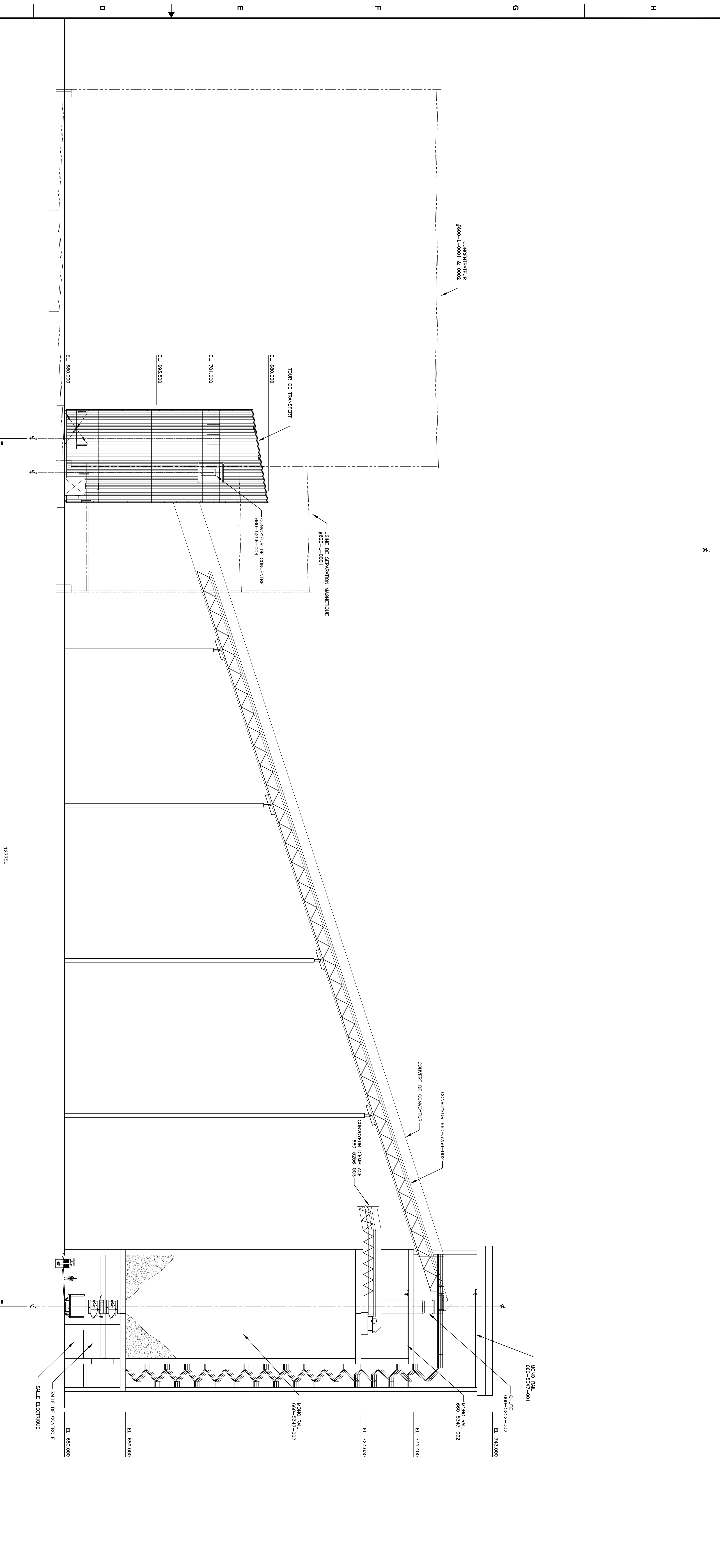
paper size A0 drawing no. 660-L-0001 revision 1



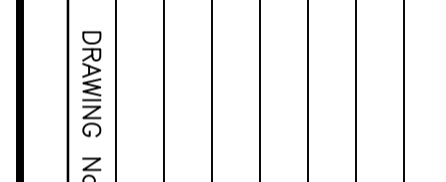


**G Dessin 660-L-0002**





SECTION A



REV	DESCRIPTION	ISSUED
1	ENVS POUR PASSEURITE	PJM C.L. A.A. 2004-12-07
0	ISSUED FOR FEASIBILITY STUDY	A.C. C.L. A.A. --
	DESCRIPTION	BT [CHECKED] APP? DATE

**BBA**  
25 ans d'âge de Santé

**CONSOLIDATED THOMPSON**

---

BLOOM LAKE  
CHARGEMENT DU CONCRETE

SECTION

designed by	C. LAROCHE	scale	1:200
drawn by	A. CHENAILER	date	2005-12-22
approved by	A. ALLAIRE	project	5743002

paper size A0 drawing no. 660-L-0002 revision 1

