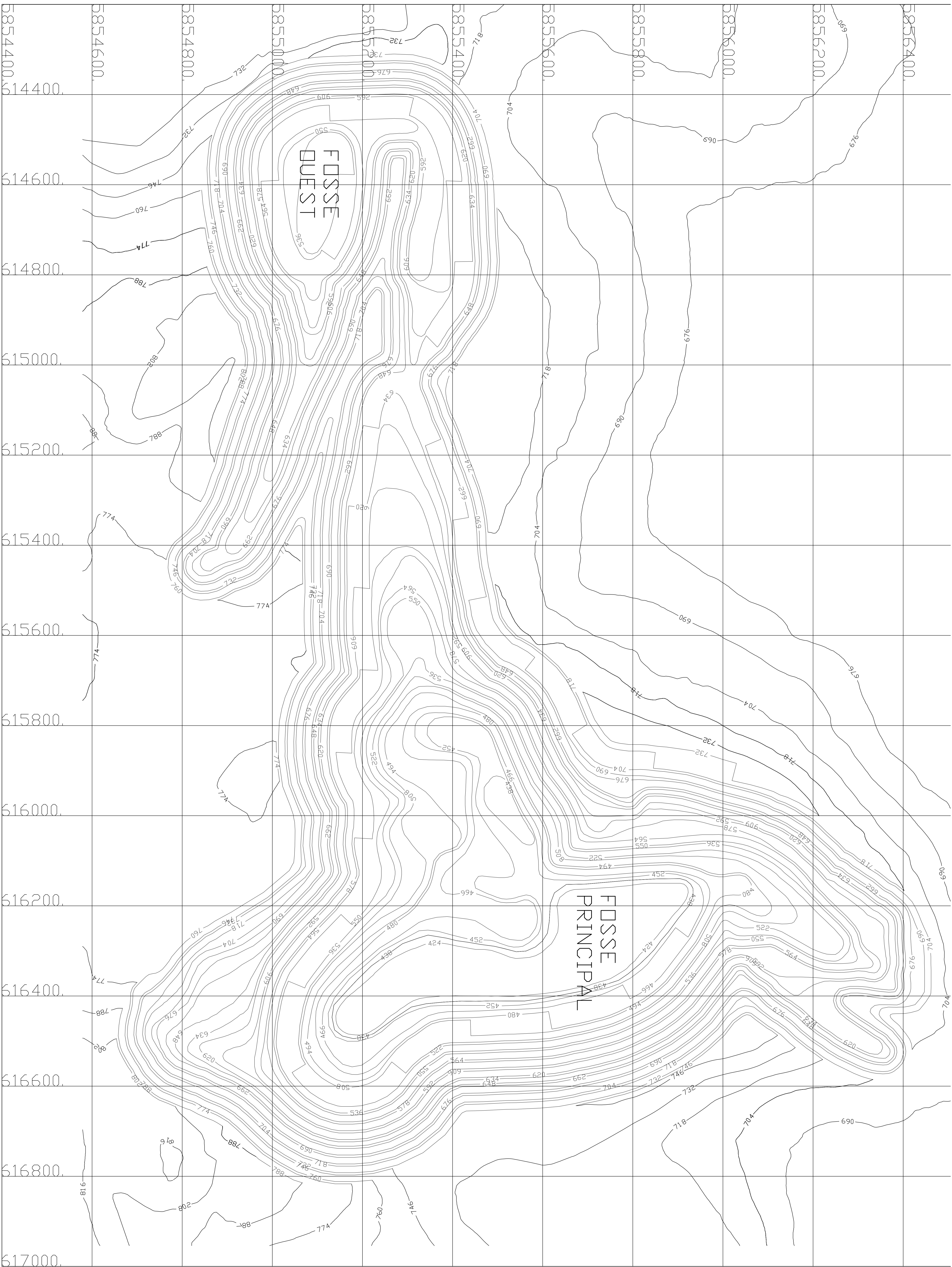


C Dessin 100-MN-0001



REV	DESCRIPTION	ISSUED
1	DWG FOUR PARCELLE	PM
0	ISSUED FOR FEASIBILITY STUDY	SIL

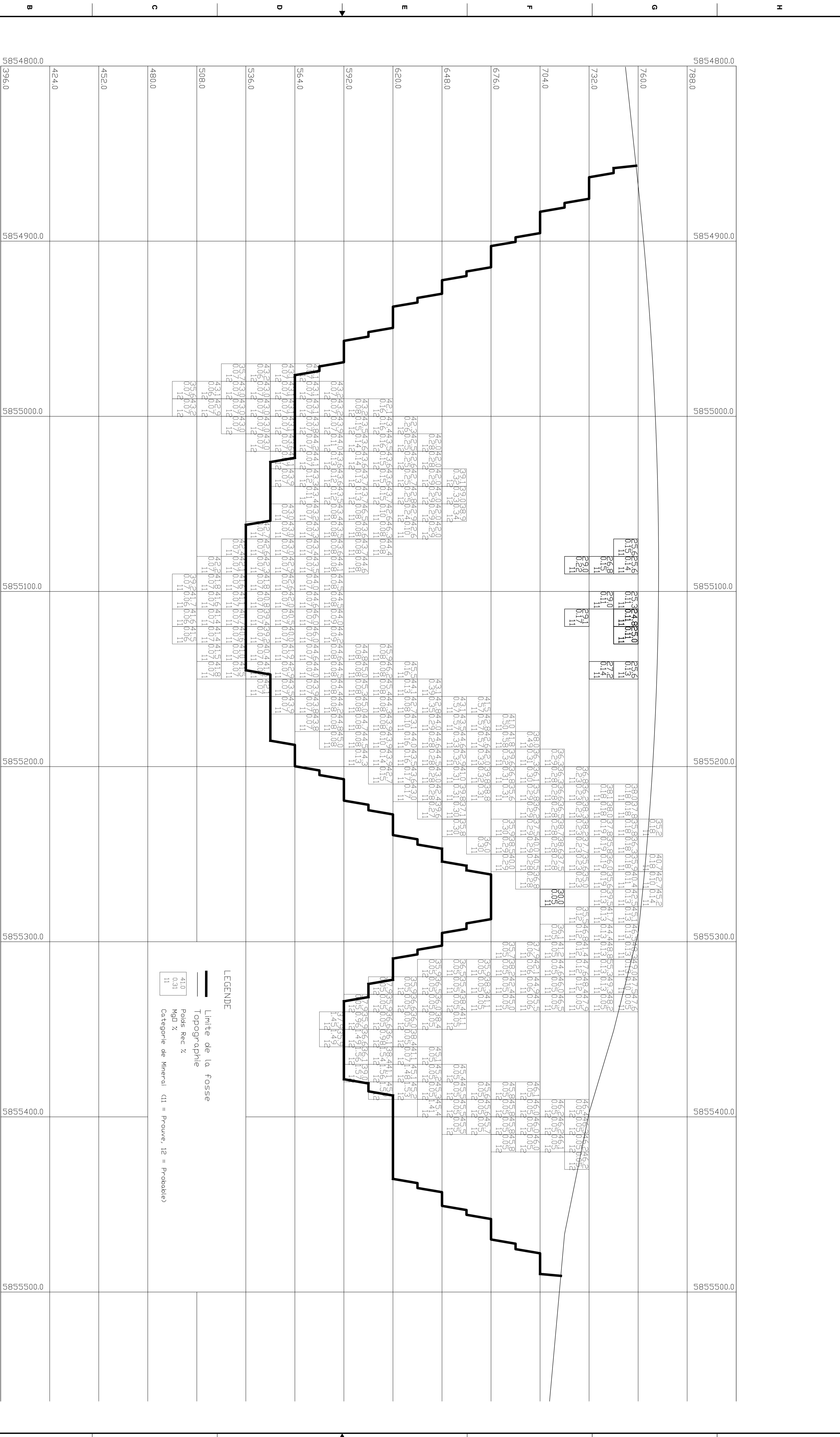
REV	DESCRIPTION	ISSUED
1	DWG FOUR PARCELLE	PM
0	ISSUED FOR FEASIBILITY STUDY	SIL

BBA
25 ans d'expertise
CONSOLIDATED THOMPSON

BLOOM LAKE
PLAN DE FOSSES

designed by	PLINE	scale	1:3000
drawn by	SILNG	date	2006-02-23
approved by	PLINE	project	5743002
paper size		drawing no.	110-AM-001
		revision	1

D Profil de la fosse – 100-MN-002, 100-MN-003, 100-MN-004



BY CASTRO FELIPE
PRINTED DATE: 12/18/2006 2:09

A

REV	DESCRIPTION	DATE
1	ISSUED FOR FEASIBILITY STUDY	2006-12-07
0	ISSUED FOR FEASIBILITY STUDY	

REV	DESCRIPTION	DATE
1	ISSUED FOR FEASIBILITY STUDY	2006-12-07
0	ISSUED FOR FEASIBILITY STUDY	

BLOOM LAKE

Section a 614600 E.
(Vers le Ouest)

Scale: 1:2000

Drawn By: SLING

Approved By: P. LIME

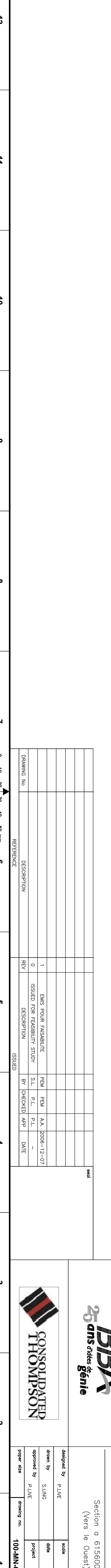
Project: 5743002

Revision: 1

BBA
25 ans d'expérience
en Géologie

CONSOLIDATED THOMPSON

100-AM-002



REV	DESCRIPTION	ISSUED
1	END FOUR PASSEUR	PMW P.M. AA 2006-12-07
0	ISSUED FOR FEASIBILITY STUDY	S.L. P.L. P.L. --

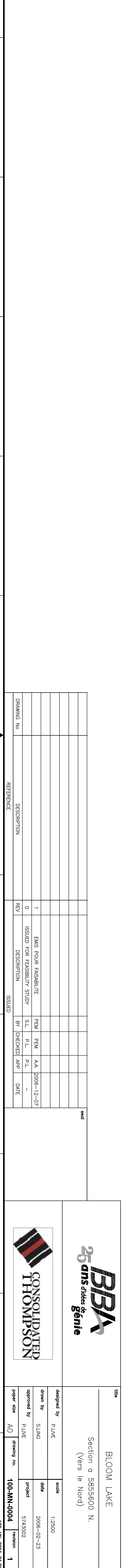
REV	DESCRIPTION	ISSUED
1	END FOUR PASSEUR	PMW P.M. AA 2006-12-07
0	ISSUED FOR FEASIBILITY STUDY	S.L. P.L. P.L. --

BBA
 25 ans d'expertise Géologie

CONSOLIDATED THOMPSON

BLOOM LAKE
 Section a 615600 E.
 (Vers le Ouest)

Scale: 1:2000
 Date: 2006-02-23
 Project: 5743002
 Revision: 1



LEGENDE

- Limite de la fosse
- Topographie
- 410 Poids Rec %
- 11 Catégorie de Mineral (11 = Proouve, 12 = Probable)

DRAWING NO.	DESCRIPTION	REV.	ISSUED
1	DMS FOUR PROBABILE	0	ISSUED FOR EXHIBIT STUDY

REV.	DESCRIPTION	ISSUED	DATE
0	ISSUED FOR EXHIBIT STUDY		

BBA
 25 ans d'expertise Génie

CONSOLIDATED THOMPSON

Section a 5855600 N.
 (Vers le Nord)

Scale: 1:2500
 Date: 2006-02-23
 Project: 5743002
 Drawing no.: 100-NM-0004
 Revision: 1

