



Figure 4. Chalk River Current Silo Array.

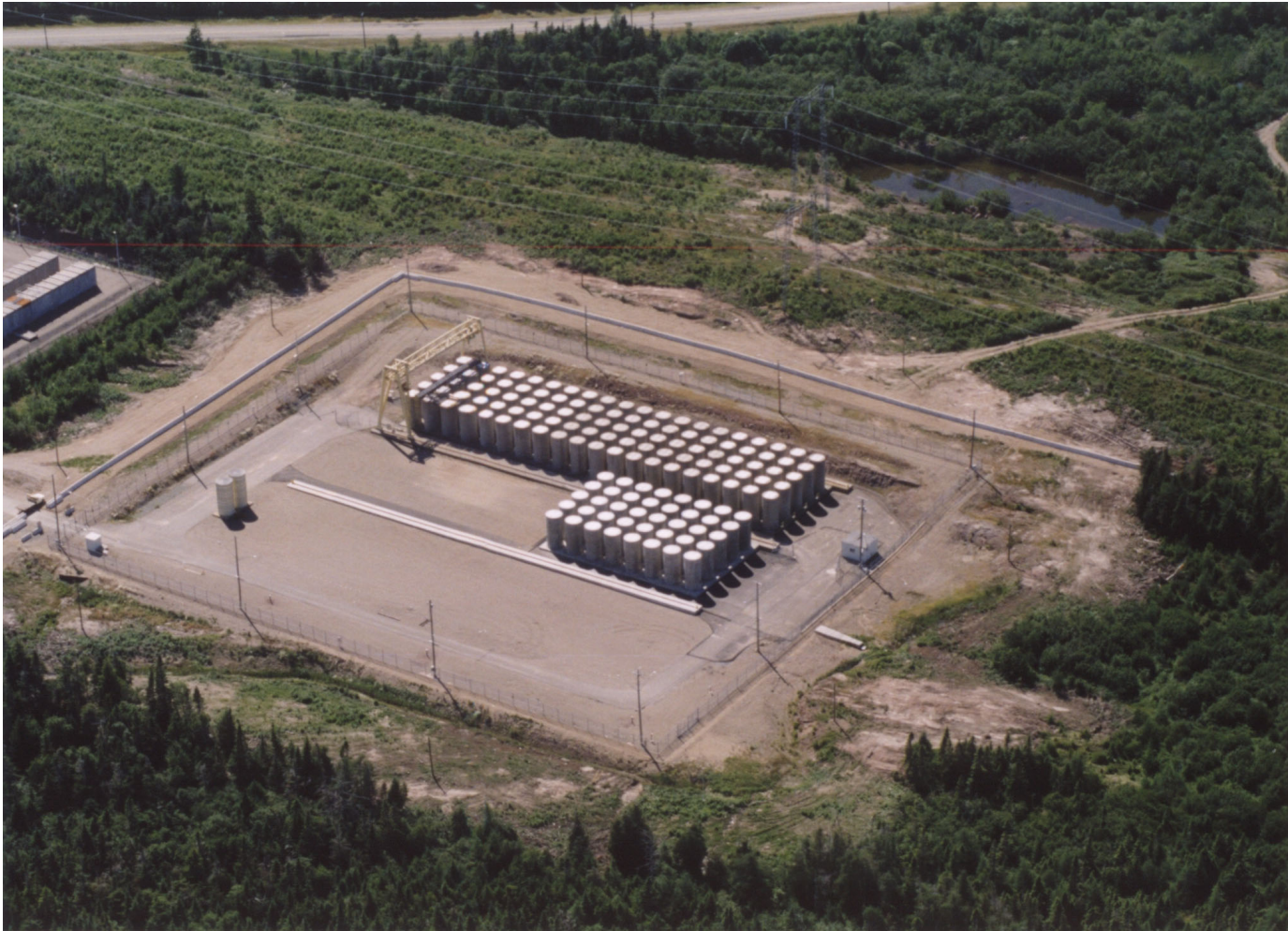
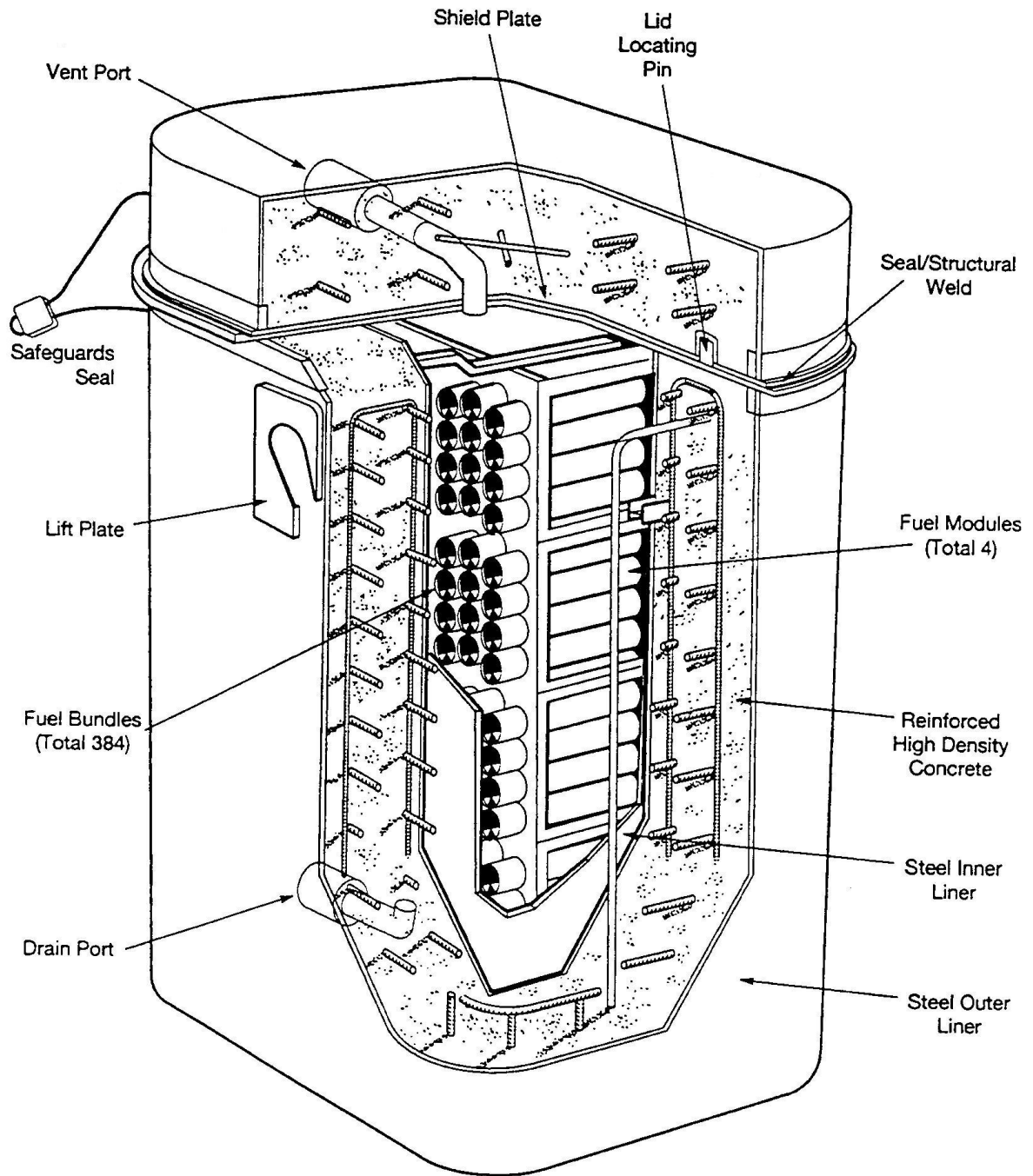


Figure 3. Current Silo Array Aerial View.



MODULE STORAGE CASK DIMENSIONS:-
 WIDTH = 2.120m
 DEPTH = 2.419m
 HEIGHT - 3.550m

MODULE STORAGE CASK WEIGHTS:-
 EMPTY = 60,000 Kg
 FULLY LOADED = 70,000 Kg
 (384 FUEL BUNDLES)

Figure 3
Module Storage Cask



Figure 9. Pickering Existing Cask Storage.



Figure 10 – Whiteshell Laboratories Current Silo Array