
BAPE-17.1

Référence:

17. Le transport maritime

Demande ou Question:

17.1 Concernant les installations fixes des points d'ancrage d'urgence proposés, y a-t-il présence de ressources particulières à ces endroits (bancs d'importance répertoriés, zones de pêche, etc.)?

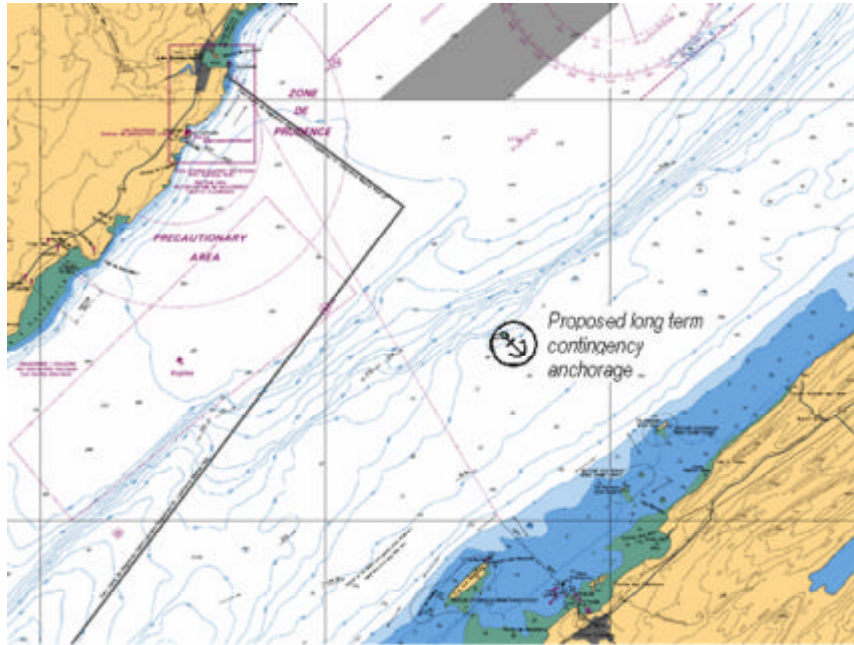
Réponse:

Neither of the two anchorages will have physical facilities that might impact natural resources. In addition, there are no physical limitations such as submarine cables or pipelines in the vicinity of the identified anchorage areas. These anchorages have been identified to provide a long term/emergency anchorage and a short-term normal arrival anchorage if the berth is not clear.

BAPE-17.1

Anchorage 1 Long Term / Emergency Anchorage.

- Latitude 48° 14.5' N Longitude 69°13.5' W, approximately 5.0 nm North of Île aux Basques directly opposite Les Escoumins, in approximately 38 m of water. This is the location of the anchorage for the Ultramar crude carriers when they wait for a clear berth at Ultramar.



BAPE-17.1

Anchorage 2 Short Term Arrival Anchorage.

- Latitude 48° 57.3' N, Longitude 69° 33.25' W, approximately 1.75 nm NW of the proposed berth at Gros-Cacouna, in approximately 28 m of water.

