

Memoire presente au BAPE 5 juillet 2016 concernant le projet des berges a Boucherville.

Par John Kipling Moseley a 19:00hrs

La Personne

- Metallurgical (Process) Engineer
- MBA (McGill)
- Budget and Results (at a Telecom company)
- Operational Auditor (for a Railroad company 1)
- Capital Projects Auditor (for a Railroad company 2)
- Finance, Operations, and Marketing Data Analyst (for Railroad company 2)
- Since the above I have other experience in the hard realtime industrial control market - software and hardware.

As well, some focus of where I come from philosophically:

- Kipling – can't help it
- Druker "small is beautiful" stood for--above all the idea of sensible scale.
- Shibumi is a Japanese word that means 'effortless perfection'
- Wabi-sabi represents Japanese aesthetics and a Japanese world view centered on the acceptance of transience and imperfection. The aesthetic is sometimes described as one of beauty that is "imperfect, impermanent, and incomplete".

I hope this helps you know even more about my background and why I get so passionate about processes, the philosophy of why, and so on.

L'intérêt

My interest in this project is because:

- I have lived in the Vieux Village since 1953.
- I have a property in Vermont that is being purchased by the Vermont Land trust and waterfront property in Quebec needs the same kind of care and understanding.
- I want to make a point that we just can't rip up old stuff and replace it with new without a proper plan.

My Opinions

My opinions on the project are:

- The project has taken too long to get to where we are today.

- The project has remained essentially unchanged since the original version (Except for the piétonnier, which was a last minute decision)
- The project does not appear to be part of any long term vision.
- Factors outside of the immediate recommendations put the project objectives at risk
- Nature can and will take care of itself if we just let it – and no matter what we do or like to think we can do – in the long run.
- When you have an asset you need to do two things: 1. Protect it, and 2. Make something of it.

My Preoccupations

My preoccupations about the project are many. However, I have selected these main ones out of the list I submitted earlier are:

- Now the project has become a rush project with consequent risks
- Risk factors that the project is subject to:
 - Marie-Victorin has already been widened past a normal amount
 - Water run off
 - The Propane pipeline under the piste-cyclable
 - The sewer system
 - The train
- The approach of the project appears to be: just do the easy solutions
 - Fill in the river with rocks
 - Keep inappropriate landscaping in place
 - Tear down instead of replace
- Other factors that have been ignored:
 - Marina in its current state – for all the fish we will add or save it probably kills more than that
 - Waterfront between Cicot and Montarville: why is it so comparatively stable?
 - Priority has been given to cars and through roads
 - The delivery of the project – who has the appropriate skills

How to Help the Project

Here are some of the ways I think would help the Project:

- Definitely something has to be done.
- Look at the two major sections of the project separately: they require different solutions. Add the financials together at the end of the exercise.
- Avoid being overzealous about replanting the waterfront and as such forget about the problems we are trying to solve.
- Recognize that erosion of the waterfront starts some 100s if not 1000s of meters inland.

- Option 5 for the park in front of the church (Figure 1)
- Work first on understanding if there are water issues (Figure 2)
- Study vibrations in the Vieux Village (Figure 3)
- Focus on safety of the Propane gas line (Figure 4)
- Reduce the width of Marie-Victorin (Figure 5)
- Make Marie-Victorin one way between De Varennes and Montarville (Figure 6)
- Separate pedestrians from bicycles (Figure 6)
- Provide parking for visitors (Figure 7, EG corner of the Maxi parking lot on Ft St-Louis)
- Review issues of water/sinking on Pierre Boucher (Figure 2)
- Make sure the owners of waterfront property – who have rights – also understand they have responsibilities to the environment too and they must abide by them. They are not entitled.

Conclusion

I am putting my complete trust in the BAPE process. There are obvious lacks in the Project from conception to now. If the project were to continue on the current path it will be a failure from many aspects.

If this project goes ahead as it any dream of making Boucherville a world heritage site will have been lost. Compare that to what Arvida – an English town – has done to win such recognition on the world stage.

/fin

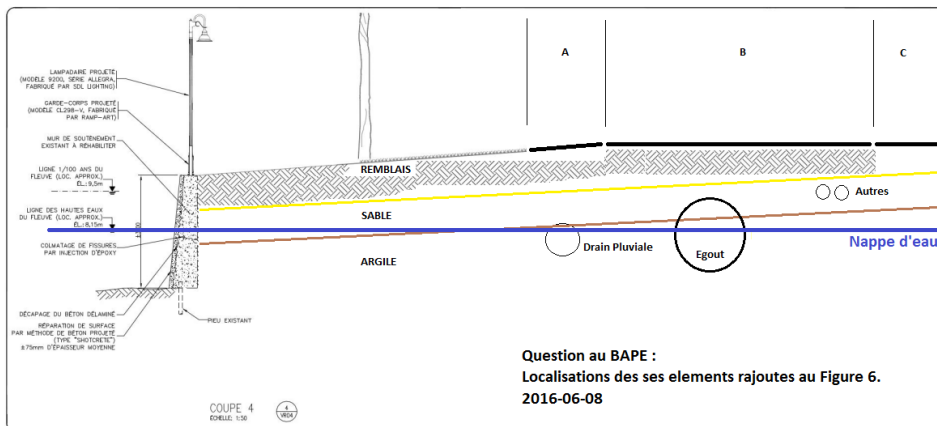
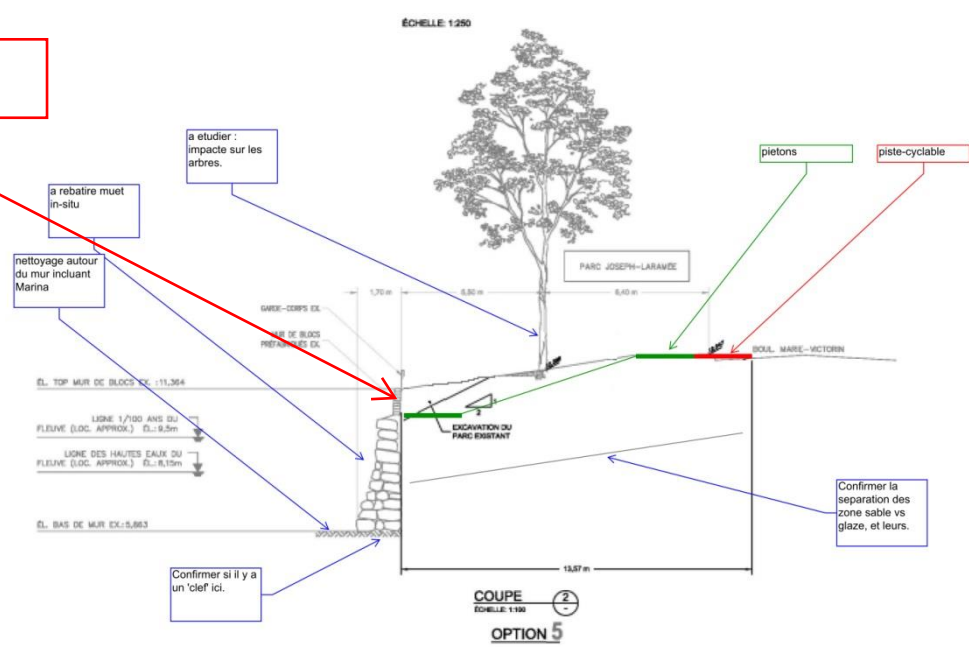


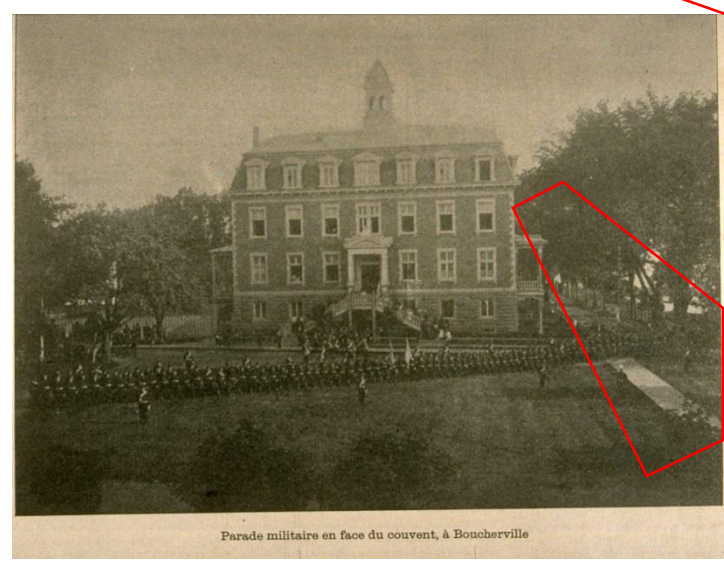
Figure 6. Vue en coupe des travaux de réfection du mur par décapage au tronçon 4 (Source : Génipur, 2015).



Eliminer



Use some logic when looking at land shear – not just fancy equations that might not even apply give the specific land situation where sand sits on top of a layer of clay.

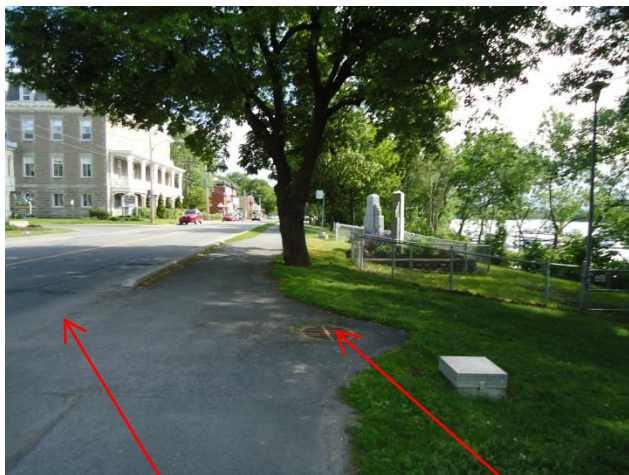
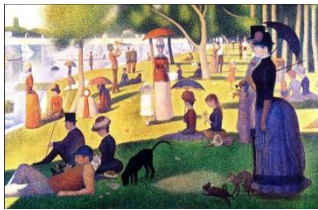
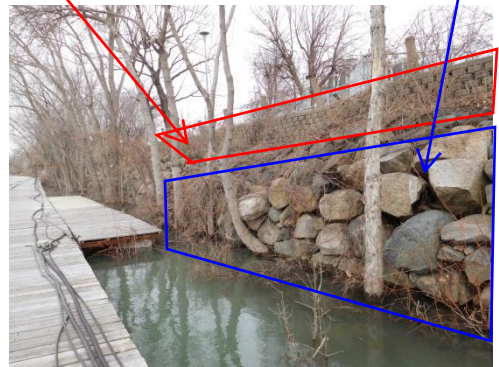


Parade militaire en face du couvent, à Boucherville



Eliminer (poids excessive)

Reparer (Moins d'intervention: combat "slash and burn attitude")



What we want? - conduct a survey and compare this pic with say a pic of Marina del Ray in CA

Water run-off. Well of course the toomstones and wall in the park are falling apart. Can one honestly believe water wants to go down this drain!?

PS The existing lampadaires are no a security problem...

Separate considerations.

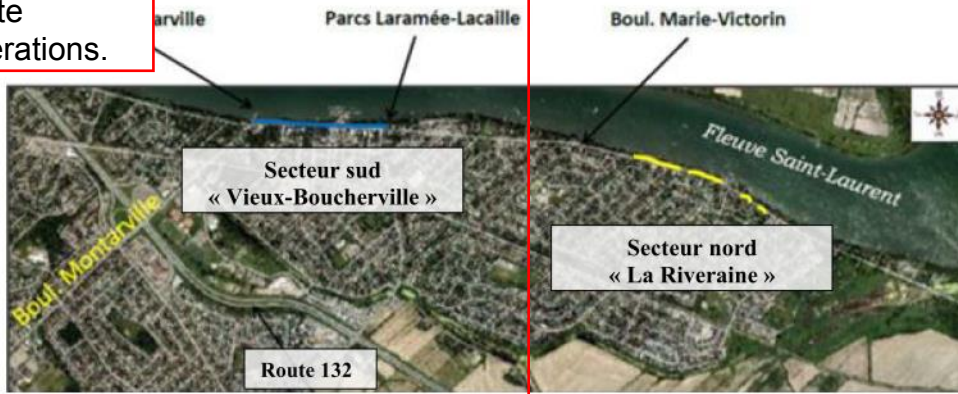
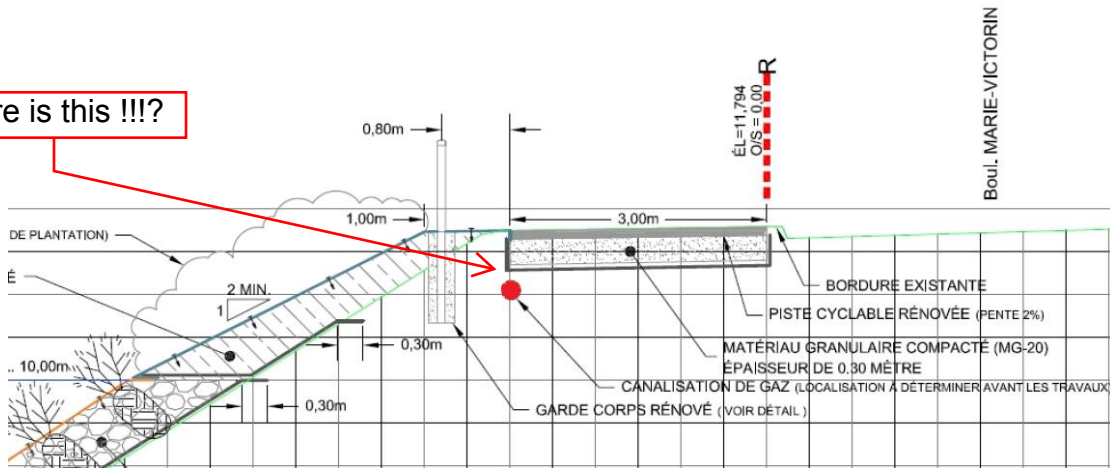


Figure 1. Localisation des deux secteurs à l'étude pour les projets en bordure du fleuve, où figurent, en bleu, le secteur du Vieux-Boucherville et en jaune, le secteur en bordure de la piste cyclable « La Riveraine »

Where is this !!!?



Lots of trees and no sharp edge...

Remember before HWY 132 trucks rolled down this road which explains why it is as wide as it is vs horse and buggy days. (Note: old photos can show odd perspectives).



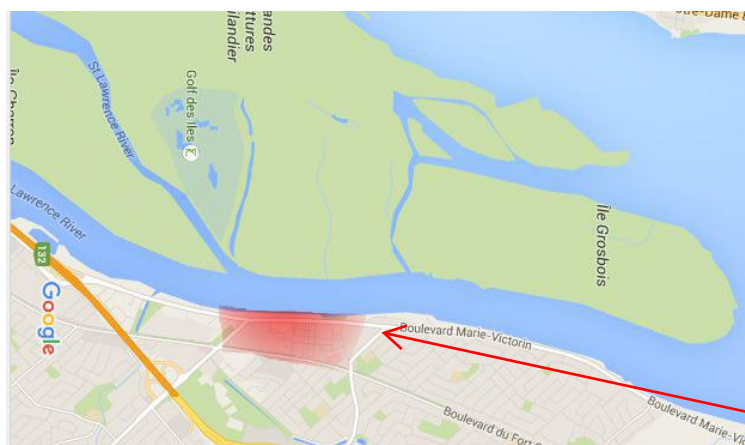
Lots of waterfront slope and little height - it appears.



Les musiciens font relâche pour assister à une course

What fun to be a kid again.

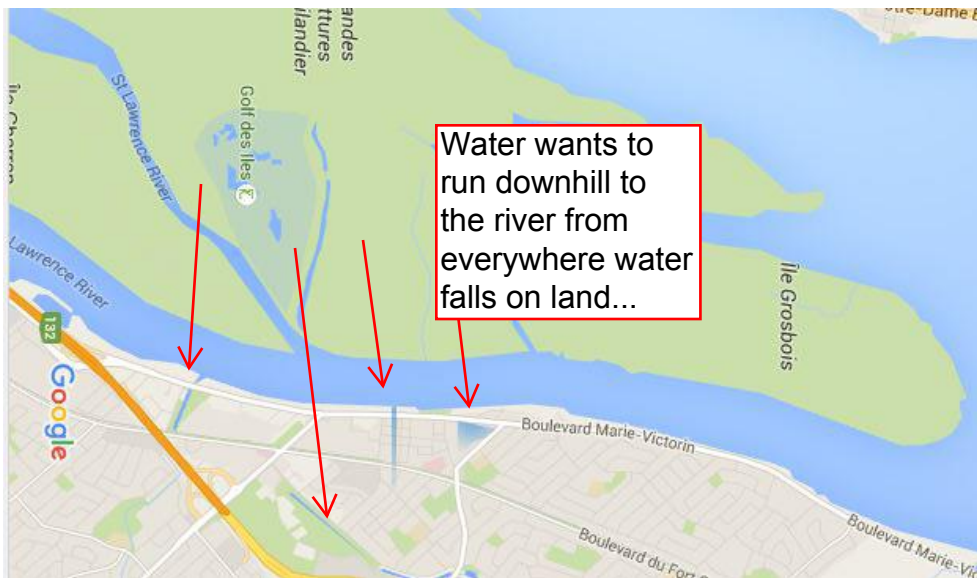
Can stop all idiots from wanting to see gorillas up front. I haven't spotted a gorilla since I was in Africa... poor animals.



Note area is where train is most close to waterfront all along the sections of the project...



Not this area of the waterfront is least affected by the train because the tracks start to rise up to pass over the HWY 132. The land is also more dry vs other parts of the old Village.



Water wants to run downhill to the river from everywhere water falls on land...