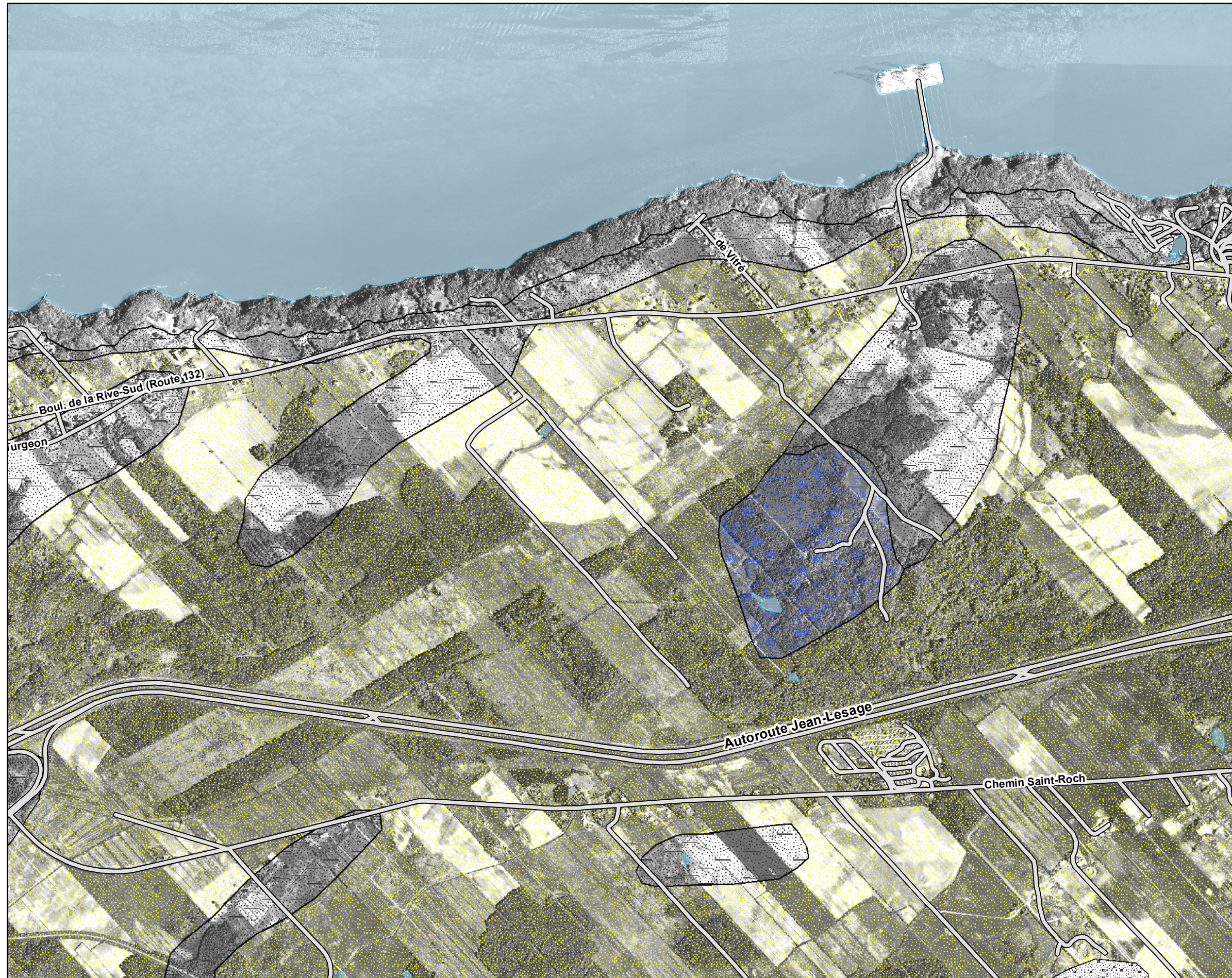
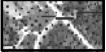
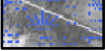

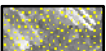


Figure 3.3



----- Limite municipale / Municipal Boundary

Géologie de surface / Surface Geology

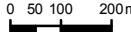
-  Affleurement rocheux / Outcrop
-  Terre humides / Swamp
-  Sable et gravier / Sand and Gravel
-  Sable uniforme / Sand

Éléments géologiques / Geological Elements :
LaSalle, P. 1978. « Géologie des sédiments de surface de la région de Québec ». Ministère des Richesses Naturelles - Québec, Direction générale des Mines, Rapport/Report DPV-565, Map 21 L/14 SE.

Titre / Title **Géologie des formations superficielles / Superficial Geology**

Projet / Project **IMPLANTATION D'UN TERMINAL DE GNL / IMPLEMENTATION OF AN LNG TERMINAL**

| | |
|---|---|
| <p>Client</p>  | <p>Consultant Directeur de projet / Project Director Yves Comtois</p> <p>Consultant  SNC-LAVALIN Environnement</p> |
|---|---|

| | |
|---|--|
| <p>Échelle / Scale</p> <p>0 50 100 200m</p>  | <p>No. projet / Project #</p> <p>603737</p> |
|---|--|

| No. | yyyy/mm/dd | aaaa/mm/jj | Description | Dessiné/Drawn | Vérifié/Verified |
|-----|------------|------------|-------------|---------------|------------------|
| | | | | | |
| | | | | | |