

Figure 10.1  
Regional map of the Ice Severity Index in the Gulf of St. Lawrence  
for March 20 2003

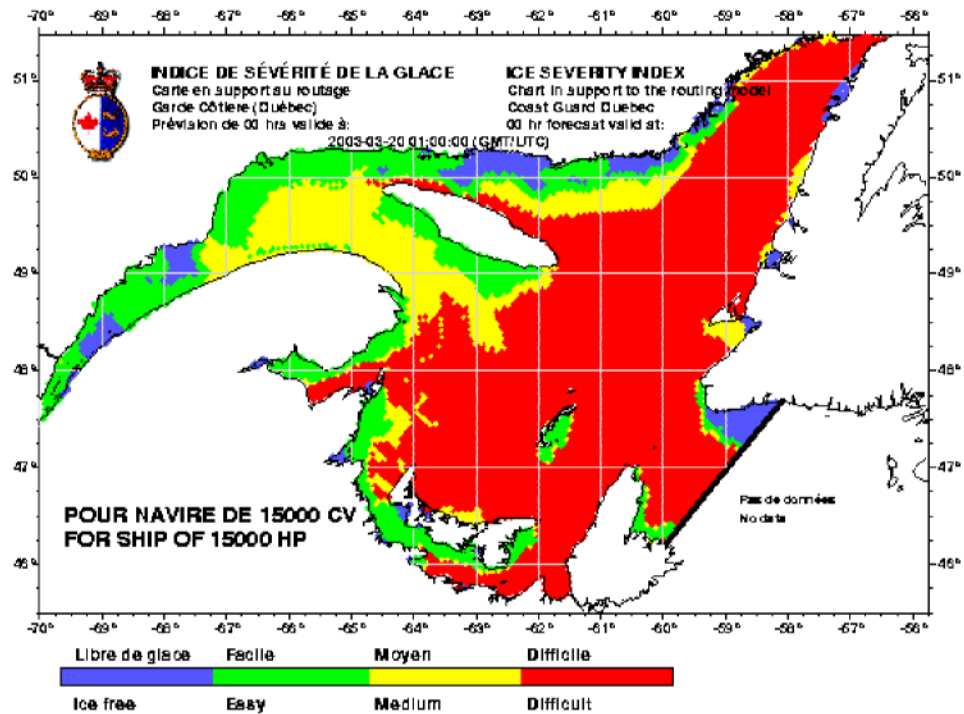


Figure 10.2  
Regional map of the Total Ice Concentration in the Gulf of St. Lawrence  
for March 20 2003

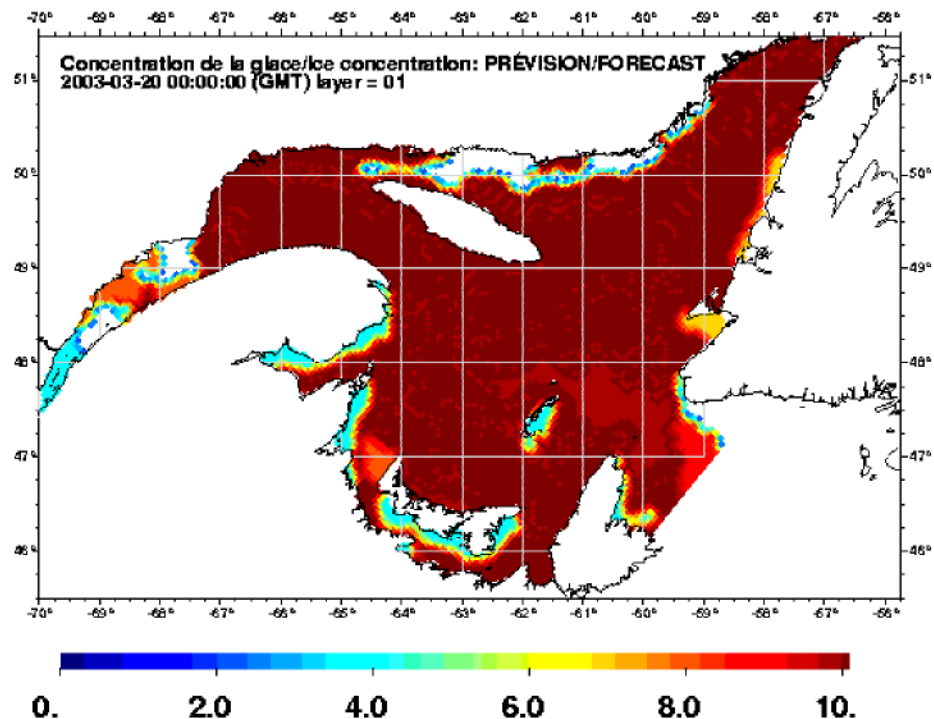
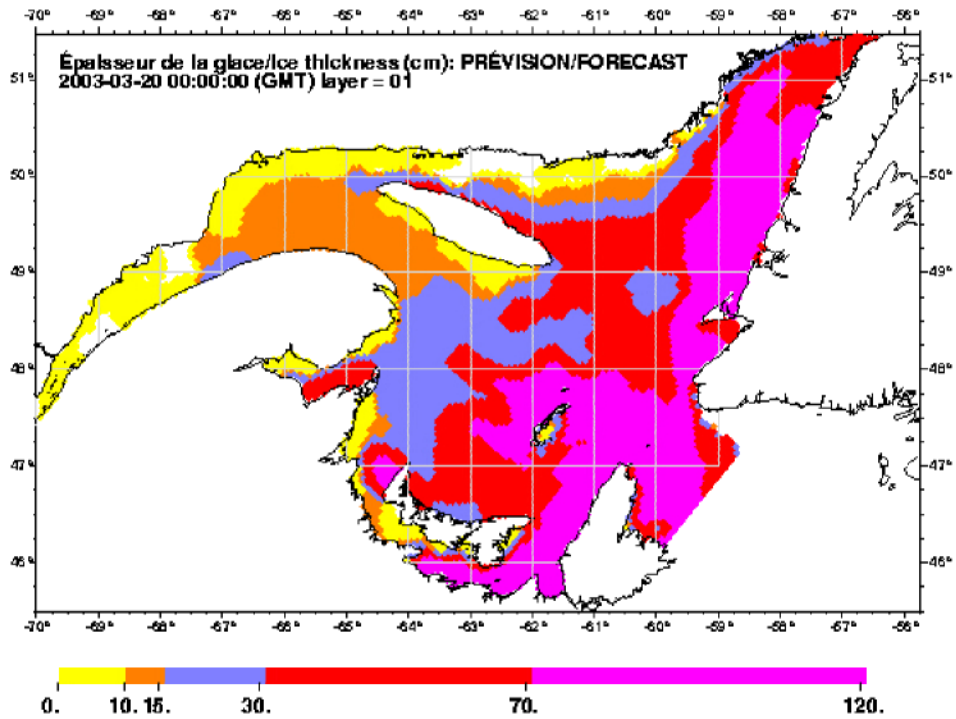


Figure 10.3  
Regional map of the Ice Thickness in the Gulf of St. Lawrence  
for March 20 2003



**Figure 11.1**  
**Aerial picture of Ultramar wharf taken on March 6, 2003**



**Figure 11.2**  
**Big floes, approximately 60 cm thick, approaching the Quebec bridges, view from upstream, March 22, 2003 (courtesy Roger Provost, Canadian Ice Service).**

