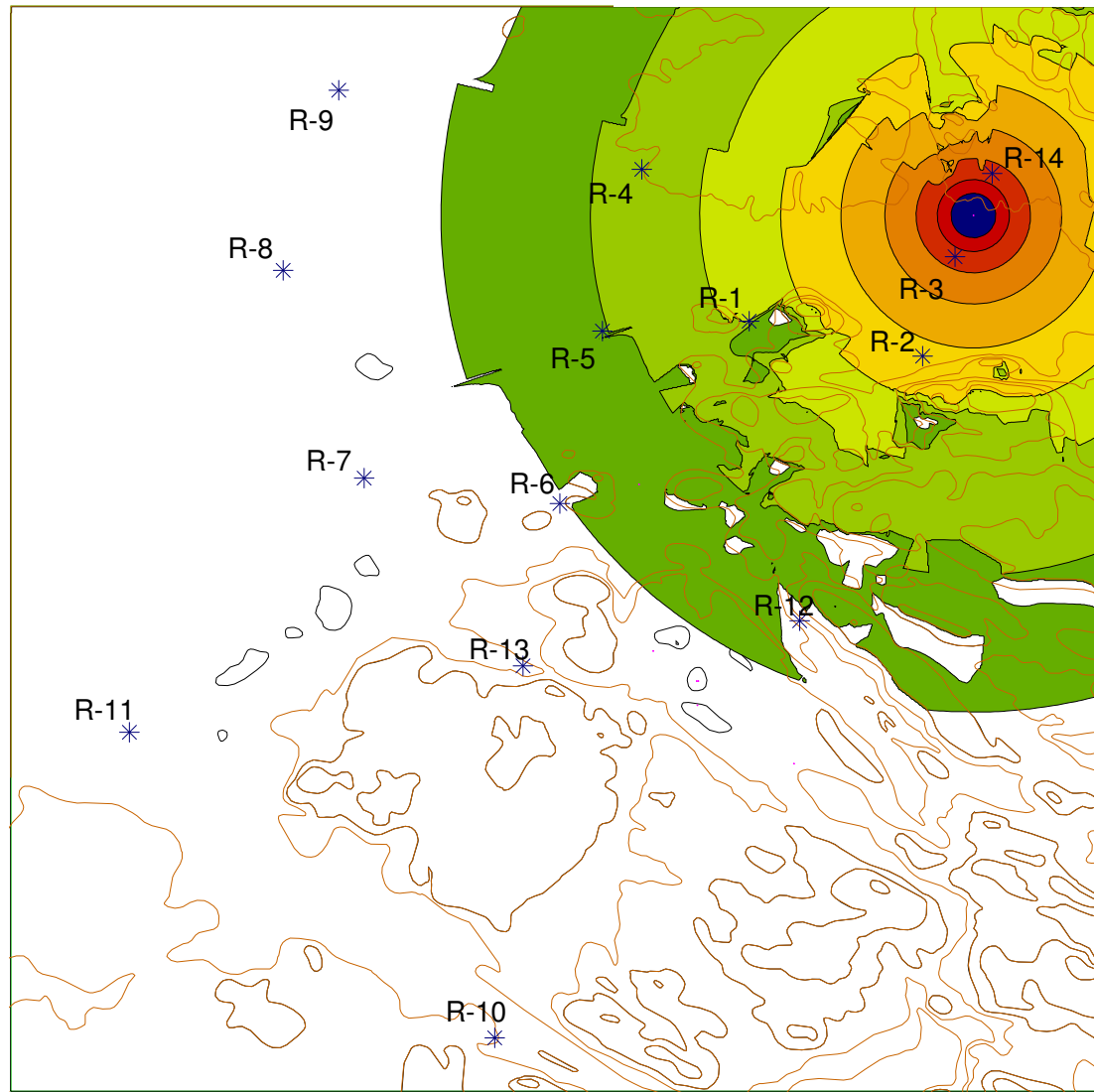
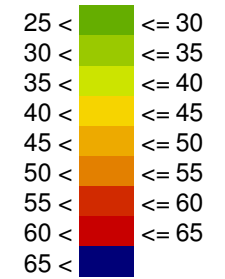


## **Annexe QC-134**







Niveau de bruit  
Leq  
en dB(A)



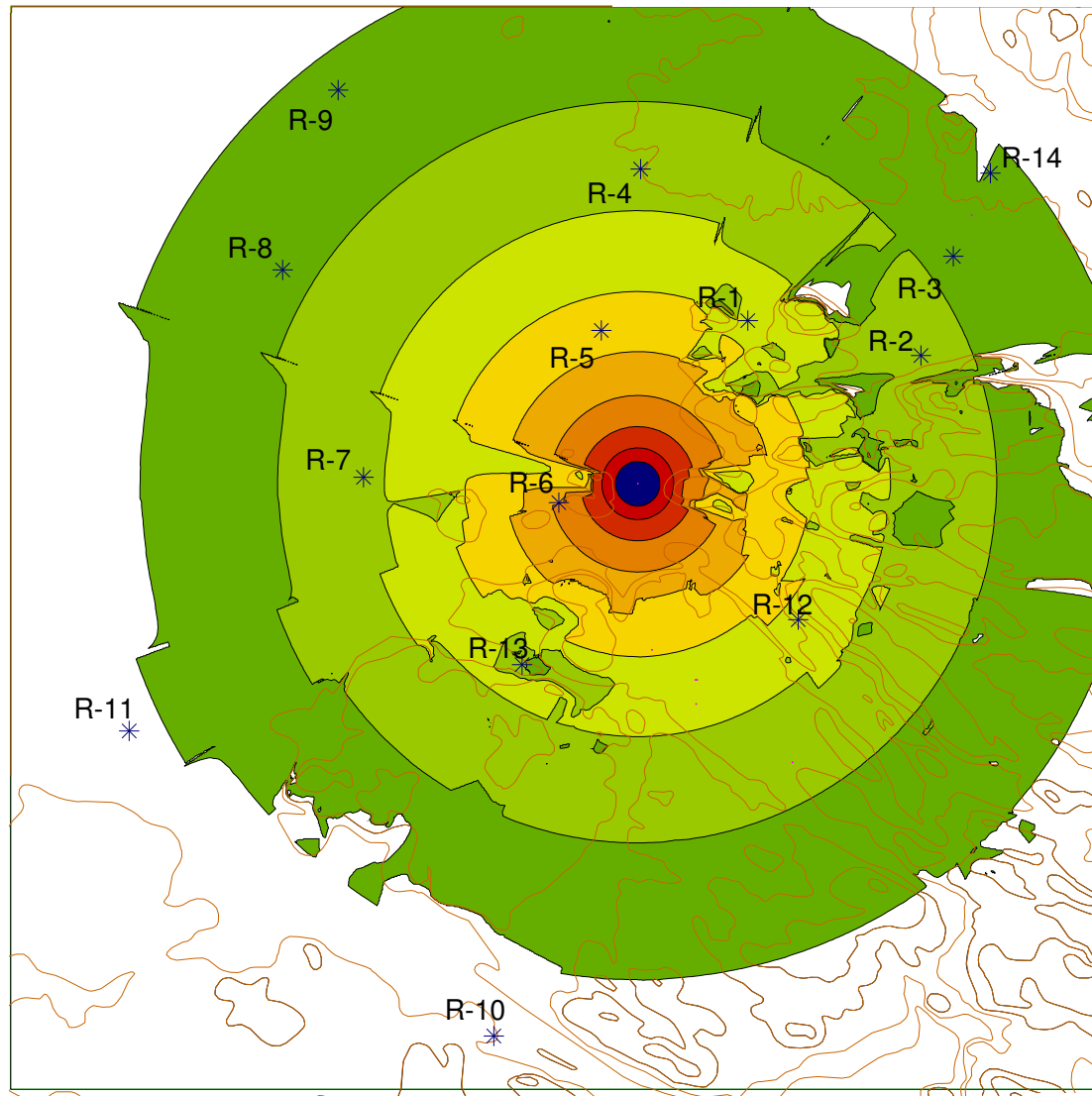
Signs and symbols

-  Courbe de niveau
-  Point receiver

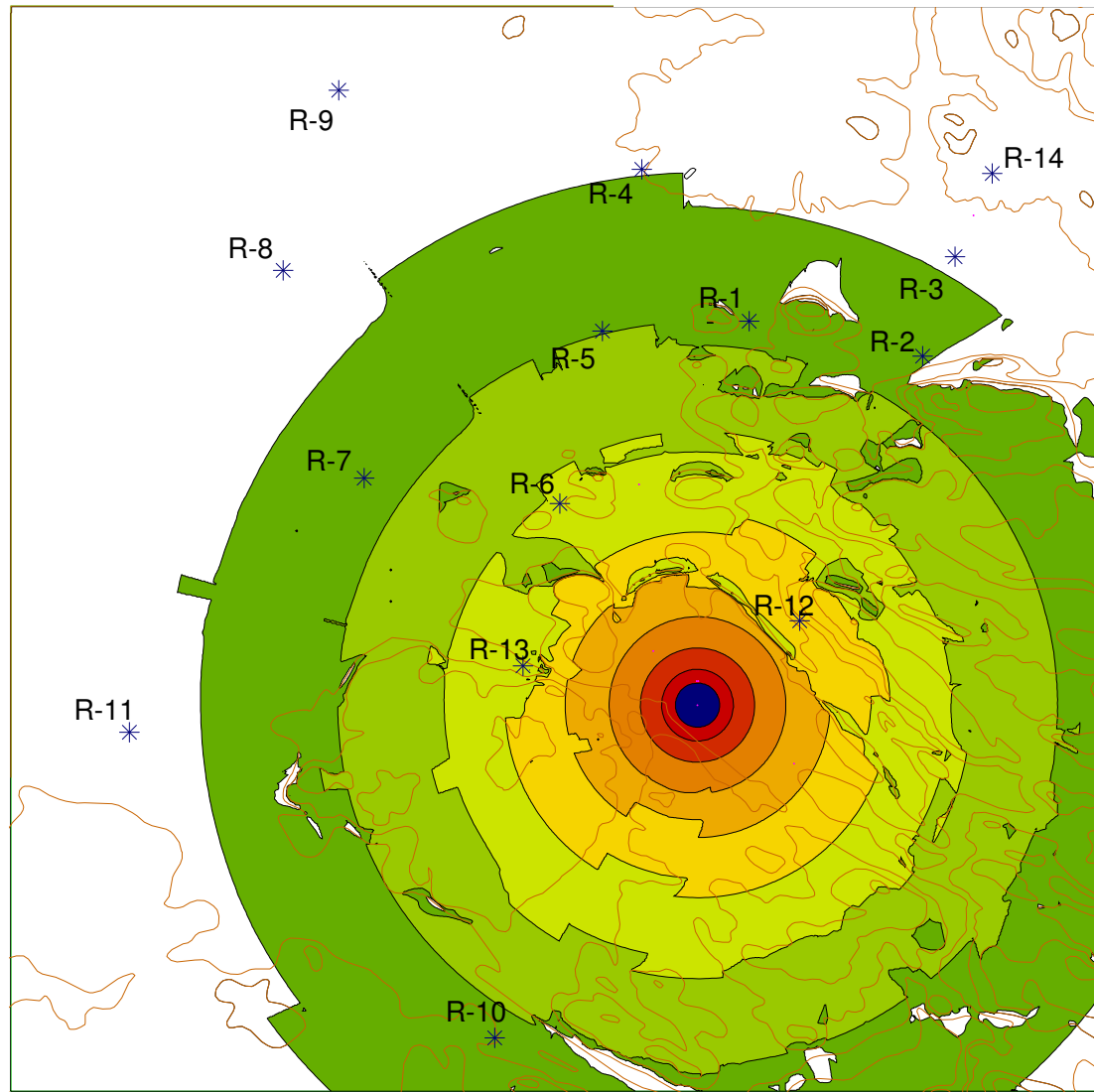
Echelle



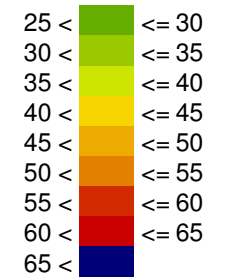
Niveau de bruit lors de la phase de construction  
(S1-1)



Niveau de bruit lors de la phase de construction (S1-2)



Niveau de bruit  
Leq  
en dB(A)



Signs and symbols

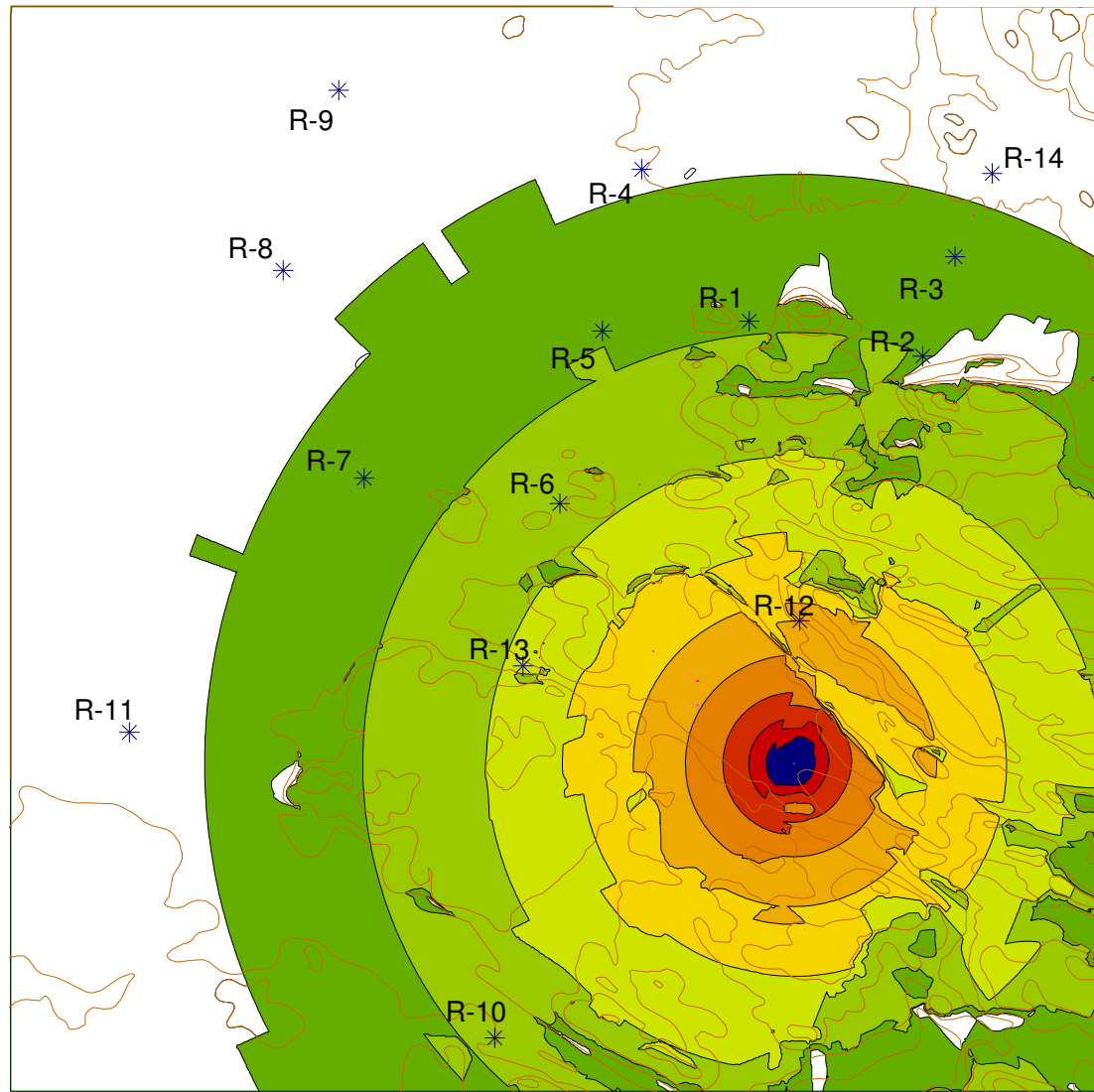
— Courbe de niveau

\* Point receiver

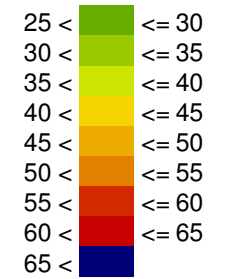
Niveau de bruit lors de la phase de construction  
(S1-3)

Echelle







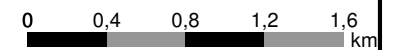
Niveau de bruit  
Leq  
en dB(A)



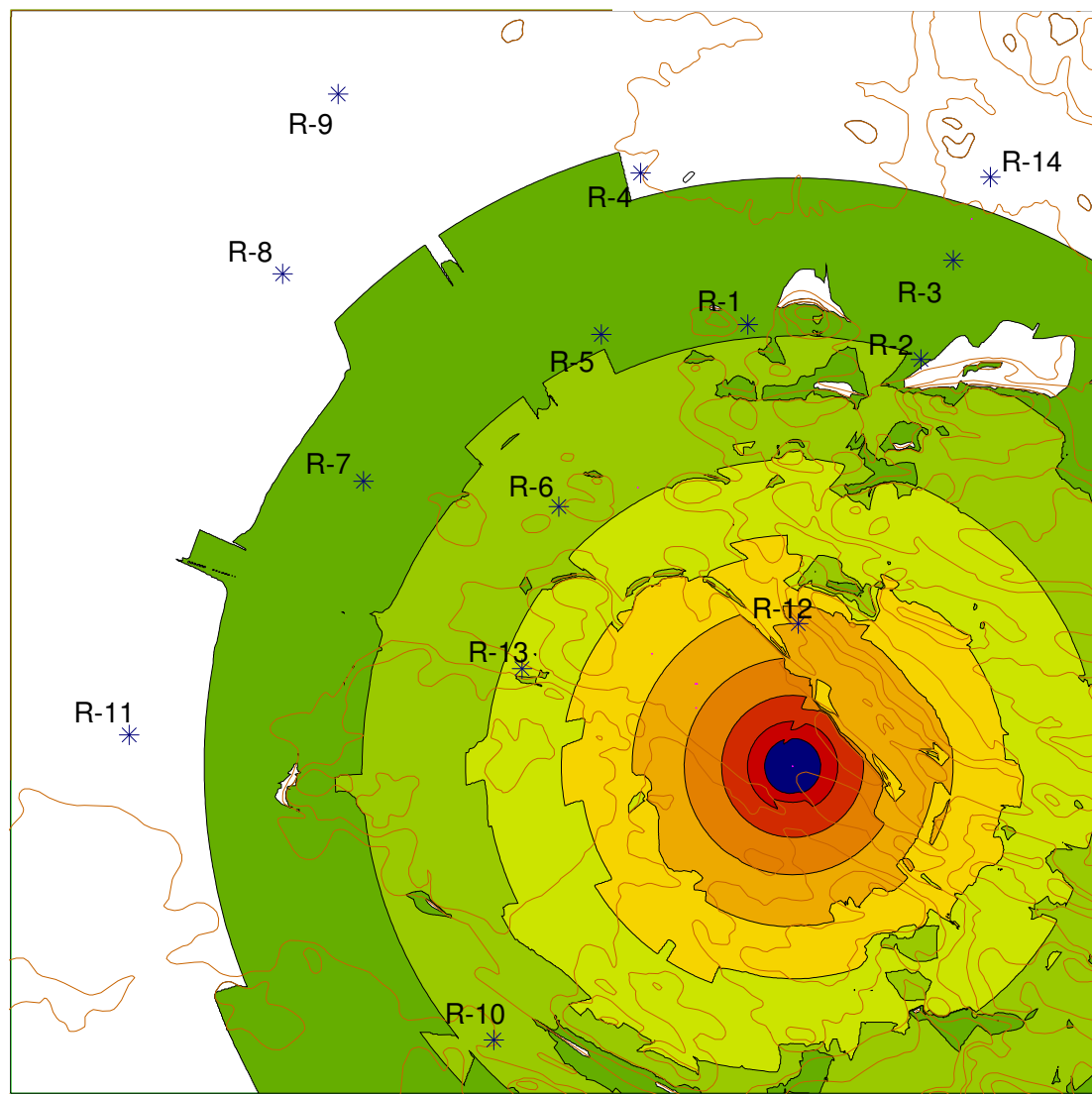
Signs and symbols

-  Courbe de niveau
-  Point receiver

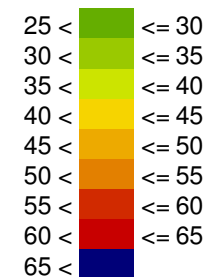
Echelle





Niveau de bruit lors de la phase de construction  
(CET 1, 2 et 3 à 195m)



Niveau de bruit  
Leq  
en dB(A)



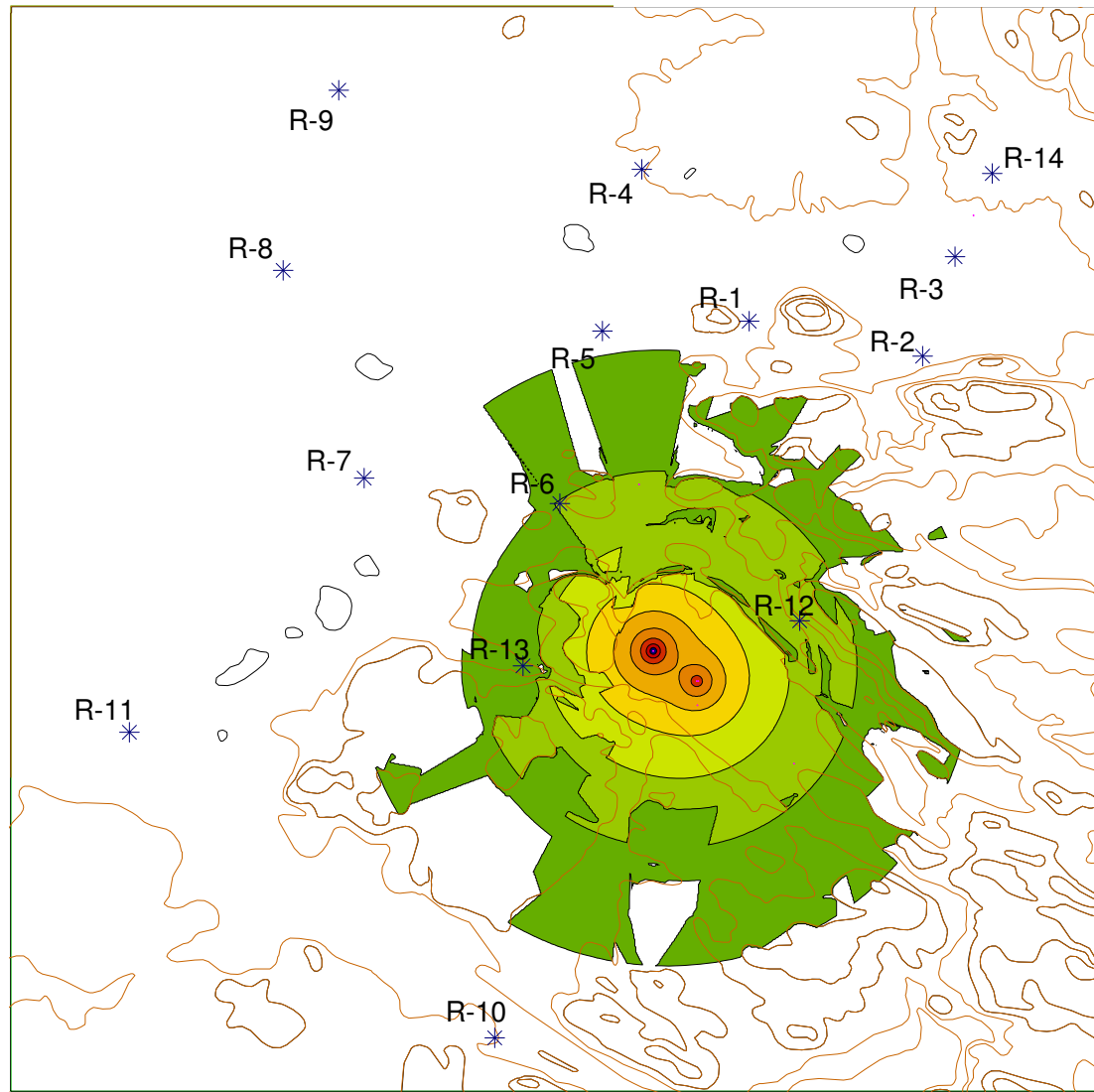
Signs and symbols

-  Courbe de niveau
-  Point receiver

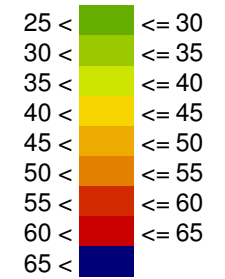
Echelle





Niveau de bruit lors de la phase de construction  
(CET 1, 2 et 3 à 200m)



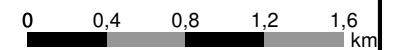
Niveau de bruit  
Leq  
en dB(A)



Signs and symbols

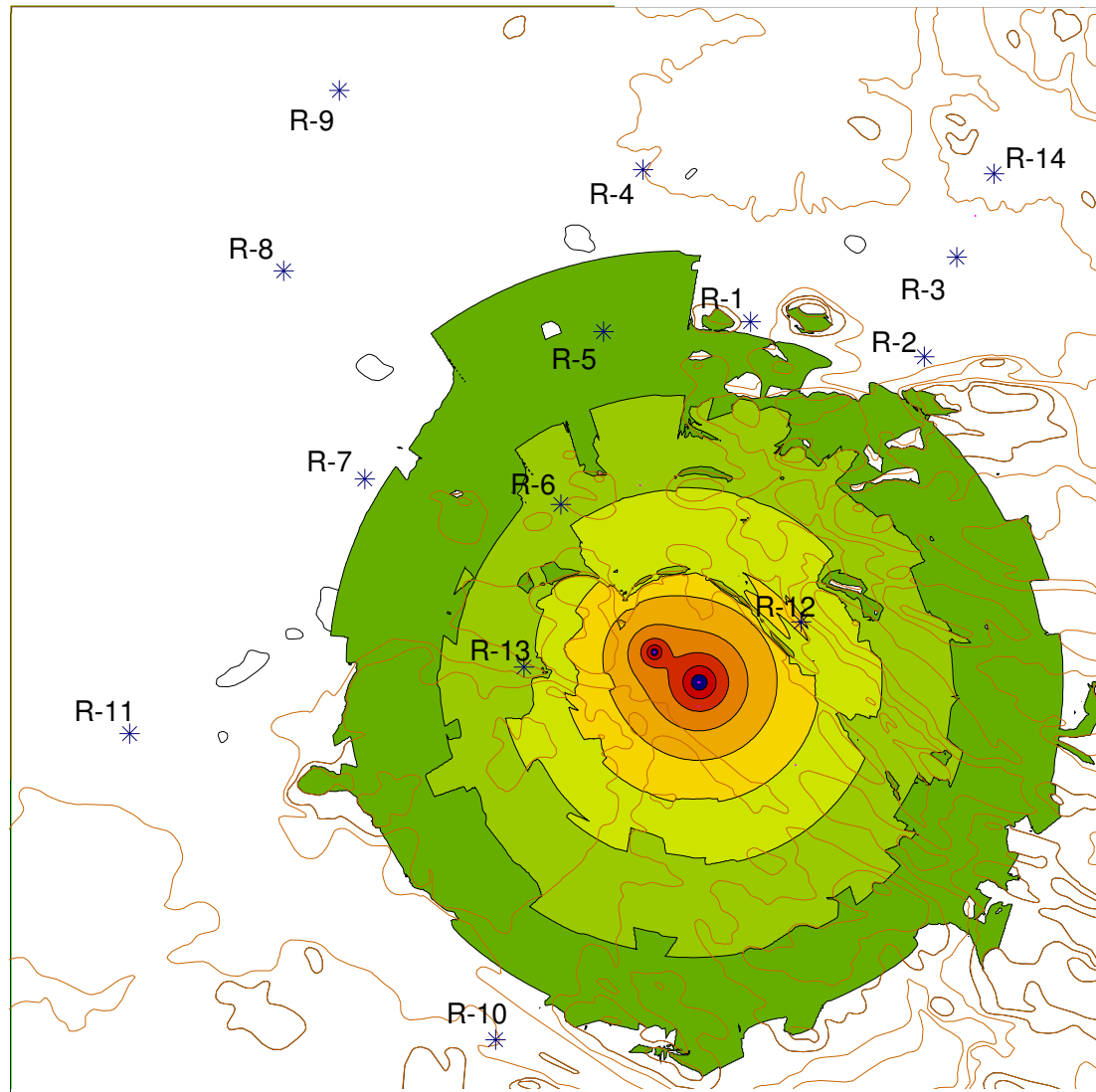
-  Courbe de niveau
-  Point receiver

Echelle

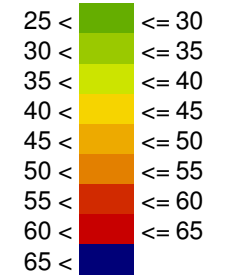


Niveau de bruit lors de la phase d'opération  
lors de l'enfouissement de déchets







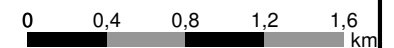
Niveau de bruit  
Leq  
en dB(A)



Signs and symbols

-  Courbe de niveau
-  Point receiver

Echelle



Niveau de bruit lors de la phase d'opération  
lors de l'enfouissement de déchets et de la préparation  
de la cellule suivante

