

Annexe QC-122

OPERATION AND MAINTENANCE MANUAL

FOR A

7' OD x 40' OAH

ENCLOSED ZTOF

BIOGAS FLARE SYSTEM

FACILITY: St. Lambert Landfill
St. Lambert, Quebec

WARNING

Do not attempt flare operation without first becoming familiar with these instructions. Improper equipment operation may result in personal injury, death, or equipment damage.

Prepared for

Purchasing Company: Noel Rochette & Fils Inc.
End User: St. Lambert Landfill
Purchase Order: M967-02 MM

Prepared by

John Zink Company
11920 East Apache Street
Tulsa, Oklahoma 74116-1300
Sales Order: 9019746
Date: July 2004

For assistance, please contact John Zink Company as follows:

Service (918) 234-2751

Emergency (918) 234-1800

Spare Parts (918) 234-2751

Facsimile (918) 234-2700

Request field service and spare part assistance during regular office hours, from 8:00 a.m. to 4:30 p.m. (CST).I. TABLE OF CONTENTS

V. DESIGN BASIS

Gas Stream

Type:	landfill
Composition:	50% CH ₄ (maximum) 50% CO ₂ , air, inert gases
Temperature:	100 °F
Molecular Weight:	30
Flow Rate:	1200 SCFM (maximum) 190 SCFM (minimum)
Heat Release *:	32,785,000 BTU/hr (maximum)
* lower heating value basis	

CAUTION

Flame flashback may occur if the gas stream contains an amount of oxygen within the explosive limit.

NOTE

Methane concentrations less than 30% may require the addition of enrichment fuel for stable combustion.

Process Design

Smokeless Capacity:	100%
Destruction Efficiency:	98% (minimum)
Operating Temperature:	1400 °F to 1800 °F (2000 °F shutdown)
Retention Time:	0.7 second at 1800 °F (minimum)
Flare Inlet Pressure:	5" H ₂ O (maximum)
Ambient Pressure:	14.4 psia

Mechanical Design

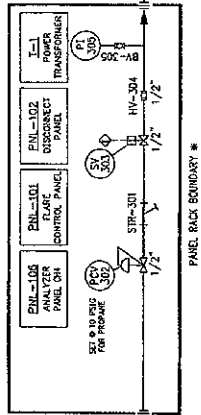
Wind Speed Classification:	110 mph
Ambient Temperature:	-20 to 120 °F
Electrical Area Classification:	non-hazardous
Site Elevation:	sea level

Utility Requirements

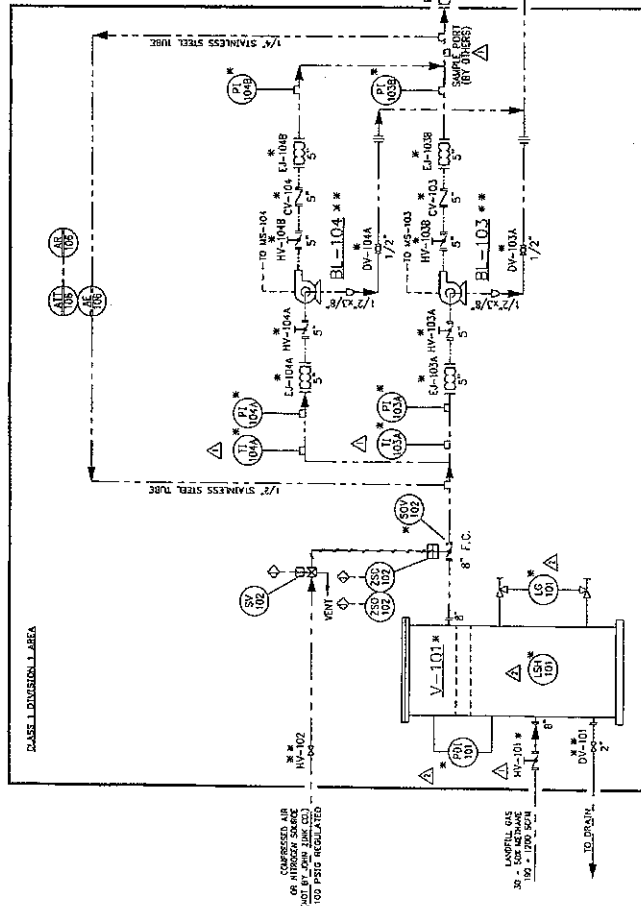
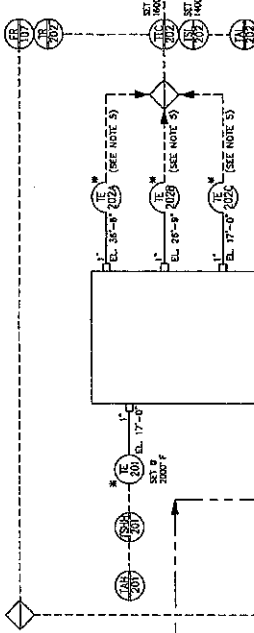
Pilot Gas:	22 SCFH of propane at 10 psig 45 SCFH of natural gas at 15 psig
Compressed Air or Nitrogen:	100 psig (minimum) dry
Electrical:	575 V, three phase, 60 Hz for gas blower control 120 V, single phase, 60 Hz for control components, transformer provided

V-101
ZMS MOISTURE SEPARATOR
2 x 8

BL-103, BL-104
GAS BLOWER
20 HP



ENCLOSED
ZIDE FLARE
7 x 40



HIGH TEMPERATURE SHUTDOWN THERMOCOUPLE LOCATION

GAS FLOW (SCFH)	17-9"
ALL FLOW RATES	17-9"
TEMPERATURE CONTROL THERMOCOUPLE LOCATION AT MAXIMUM METHANE CONCENTRATION	
GAS FLOW (SCFH)	17-9"
ELEVATION	26'-9"
	35'-5"

FIELD MOUNTED INSTRUMENT	LOCATED IN THE P.C.
REMOTE PANEL MOUNTED	INTERLOCK TO/FROM CONTROL PANEL
NORMALLY ACCESSIBLE TO OPERATOR	NOT BY JOHN ZINK CO.
LOCAL PANEL MOUNTED	ELECTRICAL INTERCONNECTIONS
NORMALLY ACCESSIBLE TO OPERATOR	
REMOTE SUB-PANEL MOUNTED	INSTRUMENT CONTROL AIR LINE
NORMALLY ACCESSIBLE TO OPERATOR	
LOCAL SUB-PANEL MOUNTED	PIPE & FITTINGS BY JOHN ZINK CO.
NORMALLY ACCESSIBLE TO OPERATOR	

NO.	REVISION DESCRIPTION	DATE	BY	CHK.
1	PRE ENGINEERING			
2				

NO.	REVISION DESCRIPTION	DATE	BY	CHK.
1	PRE ENGINEERING			
2				

NO.	REVISION DESCRIPTION	DATE	BY	CHK.
1	PRE ENGINEERING			
2				

FOR AN ENCLOSED ZIDE FLARE SYSTEM

JOHN ZINK
JOHN ZINK COMPANY LLC
PARTS AND SERVICE CALL 1-800-350-7346 (800) 350-7346

- NOTES
1. * - SUPPLIED BY JOHN ZINK CO. AND SHIPPED LOOSE FOR FIELD INSTALLATION.
 2. ** - SUPPLIED BY OTHERS (NOT BY JOHN ZINK CO.)
 3. ELECTRICAL AREA CLASSIFICATION: NONHAZARDOUS EXCEPT AS NOTED. ⚠
 4. IGNITION TRANSDUCER IS INSIDE PNL-103 AND MOUNTED ON FLARE.
 5. PANE TO FLARE EQUIPMENT BOUNDARY IS IN CASE DIVISION 1 AREA. EQUIPMENT IS SUPPLIED BY JOHN ZINK CO. AND SHIPPED LOOSE FOR FIELD INSTALLATION.
 6. TWO DAMPERS ARE AUTOMATIC (CV-102A/C) AND TWO DAMPERS ARE MANUAL (CV-102B/D).
 7. LOCATE DOWN ELEMENT WITH 10 DIAMETERS OF STRAIGHT UNDISTURBED FLOW UPSTREAM AND 5 DIAMETERS DOWNSTREAM.
 8. LOCATE FLAME ARRESTER WITH 5 DIAMETERS OF STRAIGHT UNDISTURBED FLOW UPSTREAM.
 9. THERMOCOUPLE WIRE AND IGNITION WIRE SUPPLIED BY JOHN ZINK CO. AND SHIPPED LOOSE FOR FIELD INSTALLATION.

DATE: 11/1/11

Torchère (Bruit à 1 mètre de la torchère mesuré à Saint-Lambert-de-Lauzon)

Données de bruit par bande d'octave (dBA)

	31.5 Hz	63.0 Hz	125 Hz	250 Hz	500 Hz	1000 Hz	2000 Hz	4000 Hz	8000 Hz	dB	dB calculé	dBA mesuré	dBA calculé
1	28.4	40.0	48.0	41.7	57.4	54.8	47.6	48.3	33.4	71.5	71.6	59.5	60.3
2	26.8	47.4	53.1	41.4	56.1	54.0	47.2	41.3	32.4	75.7	75.6	58.7	60.0
3	25.7	45.8	46.3	44.0	57.4	55.6	46.5	40.8	31.9	73.5	73.5	59.5	60.3
4	28.7	42.0	49.6	41.9	56.6	53.3	47.3	42.6	32.0	72.6	72.6	58.5	59.4
5	25.8	43.7	48.5	43.1	57.6	54.1	46.3	41.1	32.0	72.4	72.5	59.2	60.0
6	27.4	42.6	51.3	43.7	56.2	56.4	46.8	47.5	33.3	72.9	72.9	59.6	60.6
7	23.7	40.8	49.2	44.1	55.9	52.9	45.4	42.6	32.2	70.6	70.7	57.8	58.8
8	29.0	42.2	50.6	42.9	55.6	52.8	45.6	44.0	32.6	72.8	72.9	57.5	58.9
9	28.0	45.0	44.6	44.7	55.1	52.9	45.9	42.8	32.3	73.2	73.2	57.2	58.3
10	28.9	43.6	47.8	44.9	54.9	54.4	47.5	50.5	33.8	73.0	73.0	58.6	59.4
11	23.8	45.2	48.1	46.9	56.2	53.9	46.0	45.6	32.2	73.1	73.0	58.4	59.5
12	24.9	44.3	50.6	45.0	57.1	54.4	46.2	43.4	34.6	72.9	73.1	59.0	60.1
13	28.9	42.9	52.0	43.9	56.5	54.4	46.1	41.4	32.1	73.4	73.6	59.2	59.9
14	25.3	50.8	48.0	44.1	57.9	54.4	46.9	41.2	31.9	77.6	77.6	59.4	60.7
15	28.3	43.4	54.3	42.2	55.4	54.7	47.4	44.0	32.3	74.4	74.3	59.0	60.1
16	25.7	41.4	48.3	44.7	56.6	55.5	47.0	43.9	32.3	71.3	71.2	58.9	60.0
17	27.0	47.8	48.2	44.0	55.3	54.6	47.2	47.2	32.5	75.1	75.2	58.3	59.5
18	23.2	38.0	47.6	45.6	56.9	53.8	45.9	46.3	32.8	69.3	69.2	58.5	59.6
19	26.1	43.6	47.4	46.4	57.6	52.9	46.5	41.2	32.1	72.4	72.3	58.5	59.8
20	23.8	49.3	52.3	46.2	56.7	54.5	45.7	40.5	31.8	76.6	76.6	59.0	60.4
21	24.7	42.1	54.5	49.3	54.9	52.8	45.2	40.6	31.6	73.5	73.5	58.4	59.7
22	27.0	41.5	50.0	44.4	54.1	52.9	46.0	48.7	33.3	72.0	71.9	57.5	58.5
23	23.0	47.3	54.1	44.8	56.3	54.8	45.1	42.8	31.7	75.5	75.6	59.0	60.5
24	27.7	44.7	50.5	44.1	55.7	50.7	44.8	48.6	32.5	73.6	73.6	57.9	58.8
25	26.5	39.0	49.7	43.2	55.0	50.2	45.1	46.1	32.3	70.8	70.8	56.7	57.9
26	27.1	40.7	50.0	43.6	55.8	52.8	45.2	40.1	31.7	71.6	71.7	57.6	58.8
27	29.0	47.3	48.5	42.5	56.1	54.5	47.3	40.3	31.8	75.2	75.3	58.3	59.5
28	22.9	43.6	49.6	44.1	56.8	55.6	46.7	42.1	31.9	72.1	72.2	59.1	60.2
29	22.4	43.0	53.3	43.3	56.3	55.3	47.3	40.7	31.7	73.3	73.0	59.2	60.4
30	29.6	43.0	52.8	42.6	56.6	55.8	48.8	48.4	32.2	74.1	74.1	60.0	60.8
31	25.2	43.9	53.4	43.7	56.8	55.1	48.2	45.7	32.6	73.7	73.7	59.5	60.7
32	25.6	46.2	51.4	44.4	56.2	54.2	46.9	42.5	31.9	74.4	74.4	58.8	59.8
33	25.8	39.0	49.4	46.6	56.3	54.7	48.9	42.9	32.2	70.8	70.7	58.9	59.8
34	21.6	42.2	47.2	48.3	55.8	54.8	48.1	40.9	32.0	70.8	70.8	58.8	59.5
35	28.1	47.5	50.5	45.9	55.4	55.7	47.7	41.4	32.6	75.5	75.4	59.1	60.0
36	28.1	40.7	46.7	44.6	56.3	56.3	49.3	43.5	33.3	71.5	71.5	59.3	60.2
37	28.6	48.2	49.6	45.3	56.2	53.7	47.3	48.5	34.1	75.8	75.9	58.8	59.9
38	27.2	48.3	49.5	47.1	56.7	54.9	48.7	41.7	33.5	75.9	75.8	59.2	60.3
39	30.0	40.0	52.7	46.2	57.6	55.4	47.7	40.9	30.6	73.5	73.5	59.8	60.9
40	23.4	48.1	51.5	46.2	57.2	55.5	47.2	41.1	33.2	75.5	75.6	59.6	60.8
41	24.0	46.5	49.1	45.1	57.3	54.2	46.9	42.8	33.6	74.1	74.1	59.3	60.1
42	25.2	42.5	49.9	43.9	56.5	55.3	47.4	40.8	32.9	72.0	72.0	58.7	60.0
43	29.0	45.6	46.6	43.3	56.7	55.9	47.8	41.5	33.5	74.1	74.1	59.0	60.2
44	26.7	44.4	48.4	43.3	56.1	55.1	46.9	41.0	32.8	73.1	73.0	58.5	59.6
45	25.6	48.3	51.3	44.9	56.6	56.2	48.0	42.5	32.8	75.9	75.9	59.7	60.8
46	27.0	40.3	49.5	44.6	56.7	55.8	47.8	46.1	33.2	71.5	71.5	59.8	60.3
47	27.5	42.1	52.8	49.7	58.0	55.0	48.3	41.1	32.8	73.4	73.4	60.0	61.2
48	27.0	49.0	51.1	44.7	56.1	55.7	46.6	40.1	33.2	76.4	76.5	59.2	60.3
49	27.9	42.8	51.8	42.1	56.0	55.6	47.1	41.1	32.9	73.2	73.2	58.9	60.1
50	26.3	40.4	50.7	42.7	57.4	54.6	47.6	40.4	32.8	71.6	71.7	59.5	60.2
51	22.6	45.1	49.4	42.6	58.4	56.7	47.8	40.6	33.2	73.3	73.2	60.6	61.4
52	25.2	46.3	50.8	42.5	55.8	55.5	48.2	46.1	33.5	74.3	74.3	59.0	60.1
53	27.7	43.9	52.8	42.7	56.9	57.5	48.7	45.7	33.9	74.0	74.0	60.5	61.5
54	25.9	43.5	48.2	43.7	56.3	56.2	47.8	41.0	33.1	72.3	72.3	59.2	60.1
55	30.1	45.3	52.2	41.8	56.7	56.1	47.8	42.7	32.7	74.9	75.0	59.5	60.7
56	31.6	44.8	48.0	41.5	56.3	52.7	46.8	43.5	33.3	74.6	74.6	58.1	59.0
57	24.7	43.9	49.3	40.6	55.7	53.4	46.1	41.0	33.0	72.4	72.4	57.7	58.8
58	25.7	43.5	49.5	40.7	55.7	53.2	46.5	41.5	32.9	72.3	72.4	58.0	58.8
59	27.5	46.3	47.3	41.7	56.1	54.3	48.1	43.7	33.3	74.1	74.2	58.3	59.4
60	23.5	48.7	54.9	42.4	55.6	54.1	46.8	42.9	33.4	76.6	76.7	59.0	60.4
61	26.0	48.8	47.0	43.3	56.5	55.8	48.0	41.4	32.9	75.8	75.9	59.0	60.2
62	29.4	45.4	46.2	43.3	57.0	55.9	48.3	41.9	32.7	74.1	74.0	59.2	60.3

Torchère (Bruit à 1 mètre de la torchère mesuré à Saint-Lambert-de-Lauzon) (suite)

	Données de bruit par bande d'octave (dBA)									dB	dB calculé	dBA mesuré	dBA calculé
	31.5 Hz	63.0 Hz	125 Hz	250 Hz	500 Hz	1000 Hz	2000 Hz	4000 Hz	8000 Hz				
63	25.5	44.1	47.3	42.9	56.1	55.9	47.5	40.6	33.1	72.4	72.4	58.9	59.8
64	29.5	41.9	52.0	42.9	55.9	55.1	46.7	41.1	33.3	73.4	73.4	58.6	59.9
65	24.1	43.0	49.4	41.4	55.7	55.6	48.7	45.6	33.5	71.8	71.9	58.7	59.9
66	23.6	47.6	48.0	41.1	55.7	55.7	47.3	40.7	32.8	74.7	74.7	58.6	59.8
67	29.2	43.1	50.0	43.1	56.7	54.9	47.2	41.1	33.0	73.3	73.3	58.6	59.9
68	23.5	43.3	54.5	42.5	56.4	56.4	47.5	56.5	43.6	73.9	73.8	61.7	62.4
69	30.0	44.9	47.4	41.8	56.7	54.7	48.2	46.0	33.7	74.0	74.0	59.1	59.9
70	27.8	39.5	48.5	42.9	56.8	55.2	48.0	41.2	32.7	71.3	71.3	59.2	59.9
71	26.7	43.2	49.9	41.7	57.9	56.2	47.5	39.8	32.9	72.8	72.7	59.9	60.9
72	27.1	45.8	50.5	43.0	56.4	55.1	47.5	41.4	32.9	74.2	74.2	59.1	60.0
73	22.8	44.1	49.7	42.0	56.9	56.6	47.6	40.3	32.8	72.5	72.5	59.5	60.6
74	27.3	45.6	47.4	42.5	56.0	56.6	48.1	40.8	32.9	73.6	73.7	59.0	60.2
75	29.6	52.8	51.6	42.6	55.8	56.4	48.7	43.8	33.2	79.7	79.8	59.5	61.0
76	26.1	37.1	51.3	41.6	56.9	54.3	48.2	44.8	33.2	71.0	71.0	59.0	60.1
77	28.6	45.9	52.3	42.9	55.8	54.3	47.2	41.6	33.0	74.9	74.9	58.6	59.8
78	28.0	48.8	50.7	42.6	57.2	54.4	47.5	47.8	33.6	76.4	76.4	59.5	60.5
79	31.6	41.5	51.5	43.0	55.1	56.2	47.6	42.0	32.9	74.0	74.1	58.6	60.0
80	26.7	46.0	52.3	41.1	55.8	52.4	46.9	42.3	33.0	74.5	74.6	58.0	59.3
81	24.7	39.2	48.4	42.0	57.6	54.1	45.7	41.6	33.0	70.2	70.2	58.9	59.9
82	27.6	46.9	49.5	41.3	54.7	52.8	46.2	52.7	46.5	74.9	74.8	58.8	59.6
83	26.5	42.5	51.4	42.6	55.6	52.7	45.1	42.5	32.9	72.6	72.6	57.6	58.9
84	26.4	40.4	53.2	41.0	55.0	54.6	47.0	44.4	33.1	72.5	72.5	58.4	59.6
85	32.3	46.6	49.9	41.4	55.7	53.8	46.5	44.9	33.2	75.8	75.9	58.2	59.3
86	27.5	41.7	50.2	42.2	55.4	54.9	46.5	46.6	33.3	72.2	72.2	58.3	59.5
87	29.3	40.3	47.4	42.6	56.0	53.0	46.2	40.0	33.0	71.7	71.9	57.7	58.7
88	29.4	45.2	48.3	42.9	55.0	53.9	47.1	45.1	32.8	74.1	74.0	58.0	58.9
89	28.0	48.3	51.8	43.0	56.1	54.4	46.6	40.2	33.1	76.1	76.1	58.9	59.9
90	32.0	45.8	50.4	42.4	57.5	53.8	49.0	47.4	32.9	75.6	75.5	59.4	60.4
91	24.1	49.6	50.5	41.9	56.6	55.5	46.9	45.6	33.4	76.8	76.7	59.2	60.5
92	25.5	42.7	51.8	42.2	56.2	54.2	47.8	43.0	33.0	72.7	72.6	58.7	59.8
93	27.5	44.7	52.0	42.4	56.1	54.1	47.3	40.6	33.0	74.0	74.0	58.5	59.7
94	27.5	46.3	49.7	40.7	56.5	54.3	46.4	41.1	32.9	74.4	74.4	58.6	59.7
95	26.8	40.5	52.8	41.9	53.9	54.0	46.6	41.2	32.8	72.5	72.4	57.5	58.9
96	29.2	44.6	51.5	42.2	55.8	54.9	46.6	40.1	32.7	74.1	74.2	58.5	59.7
97	29.5	46.5	49.9	41.8	56.2	54.5	46.4	40.9	32.7	75.0	75.0	58.3	59.6
98	27.4	39.3	49.1	42.2	56.7	56.7	47.9	43.2	32.2	71.4	71.2	59.4	60.5
99	27.7	44.7	47.6	41.8	57.6	55.3	46.3	42.2	31.6	73.3	73.3	59.4	60.3
100	25.9	45.7	51.7	42.4	56.1	54.8	47.4	46.5	32.3	74.2	74.2	59.1	60.1
101	24.4	41.5	49.7	42.0	57.8	55.6	47.0	42.5	31.5	71.4	71.4	59.9	60.6
102	29.6	48.3	55.2	43.1	54.8	54.6	47.0	45.2	31.1	77.1	77.1	58.8	60.4
103	25.5	46.9	50.3	44.6	55.5	55.6	46.7	42.6	31.1	74.7	74.7	58.8	59.9
104	27.8	46.4	48.0	41.6	55.2	53.7	46.3	41.1	31.2	74.4	74.3	57.5	58.7
105	23.3	46.9	45.0	41.8	55.3	55.2	47.0	40.7	31.3	74.0	73.9	58.0	59.2
106	29.5	48.3	53.8	40.9	58.1	55.6	46.9	50.2	32.8	76.8	76.8	60.4	61.7
107	26.7	46.5	50.0	42.3	56.0	54.5	46.3	44.6	32.5	74.5	74.5	58.7	59.6
108	30.8	47.4	51.8	40.9	55.9	51.5	45.7	41.1	31.2	76.1	76.1	57.6	59.0
109	28.4	44.4	52.8	42.1	56.4	53.9	45.9	49.4	32.1	74.1	74.3	59.1	60.2
110	29.3	44.0	53.8	41.9	56.0	52.4	46.2	46.1	31.5	74.6	74.6	58.3	59.7
111	28.2	46.6	50.1	40.4	56.4	54.3	45.7	41.0	31.1	74.8	74.8	58.5	59.6
112	23.9	44.7	52.4	42.3	57.0	56.3	47.6	46.4	31.9	73.7	73.7	59.7	61.0
113	26.1	42.0	52.3	41.8	55.2	55.6	46.9	51.2	32.9	72.5	72.6	59.4	60.3
114	23.3	50.2	49.3	42.4	55.3	54.5	46.5	43.8	31.3	77.1	77.0	58.3	59.5
115	25.8	42.5	46.2	41.0	55.9	55.8	46.6	42.0	31.2	71.4	71.4	58.7	59.6
116	26.4	41.7	53.5	42.1	57.1	54.4	46.5	41.4	31.1	73.2	73.1	59.2	60.4
117	26.3	46.1	55.3	41.4	55.9	54.8	46.6	42.7	31.2	75.5	75.5	59.2	60.6
118	26.5	43.3	51.9	41.7	56.2	55.2	47.3	40.7	31.1	73.1	73.1	59.2	60.0
119	28.1	44.1	51.4	43.1	56.4	56.5	48.4	41.4	31.1	73.7	73.7	59.5	60.6
120	24.2	48.5	50.5	43.0	56.1	56.2	47.7	43.9	38.1	75.8	75.8	59.3	60.5
121	28.5	40.8	47.1	42.0	56.5	54.5	53.8	41.5	35.3	71.8	71.7	59.6	60.3
122	25.1	42.2	47.7	42.6	57.5	55.2	53.9	42.1	36.8	71.5	71.5	60.2	61.0
123	27.7	40.6	45.6	41.8	57.7	57.5	56.3	42.9	35.8	71.3	71.3	61.7	62.2
124	25.5	41.8	52.4	43.0	58.7	56.7	55.6	43.7	34.2	72.8	72.8	61.7	62.6

Torchère (Bruit à 1 mètre de la torchère mesuré à Saint-Lambert-de-Lauzon) (suite)

	Données de bruit par bande d'octave (dBA)									dB	dB calculé	dBA mesuré	dBA calculé
	31.5 Hz	63.0 Hz	125 Hz	250 Hz	500 Hz	1000 Hz	2000 Hz	4000 Hz	8000 Hz				
125	24.4	49.3	49.2	44.2	57.8	57.3	51.7	41.6	34.3	76.4	76.4	61.0	61.8
126	24.0	39.9	46.3	43.3	57.2	53.7	50.2	42.3	34.2	69.8	69.8	59.0	59.8
127	29.6	44.2	48.5	45.6	58.8	56.1	51.2	42.3	34.6	73.8	73.8	60.7	61.6
128	29.2	50.1	46.3	44.5	59.6	57.7	54.7	40.6	31.7	77.4	77.4	62.0	63.0
129	28.6	39.6	46.0	41.7	57.5	59.8	58.5	42.9	35.2	71.7	71.6	63.5	63.6
130	27.9	42.2	47.9	41.1	55.9	58.0	55.5	41.5	34.7	72.2	72.2	61.4	61.7
131	26.0	46.7	51.2	41.9	59.0	56.5	57.3	43.1	37.0	75.0	74.9	62.2	63.0
132	26.6	44.7	51.9	42.3	58.9	56.6	51.9	40.1	32.8	74.0	74.0	60.9	62.0
133	24.8	41.1	50.2	41.9	58.0	58.3	56.5	47.1	34.1	71.7	71.7	62.4	62.9
134	22.0	46.4	49.2	41.9	58.0	59.0	56.1	40.8	33.0	74.1	74.1	62.5	63.0
135	31.0	44.4	54.1	41.9	57.9	56.5	58.2	41.6	33.9	75.5	75.5	62.3	63.1
136	22.8	43.9	50.5	41.9	56.8	56.3	58.6	44.0	33.5	72.5	72.7	62.2	62.6
137	28.8	44.4	51.5	42.6	56.4	55.6	57.7	42.1	34.5	74.1	74.1	61.5	62.0
138	27.4	44.3	47.9	40.3	58.2	56.8	57.3	41.4	33.7	73.2	73.2	62.0	62.5
139	28.0	40.6	46.9	41.0	56.2	58.1	55.3	41.0	34.9	71.5	71.5	61.5	61.7
140	27.1	38.5	45.7	40.3	57.7	60.1	50.8	41.0	36.1	70.7	70.6	62.5	62.6
141	26.1	47.2	51.3	41.6	57.2	57.4	51.4	40.1	33.3	75.2	75.2	60.9	61.5
142	26.0	40.5	53.6	42.3	57.8	56.9	57.2	41.3	33.2	72.9	73.0	62.0	62.8
143	25.5	47.9	50.3	42.0	56.6	56.7	54.1	47.2	34.3	75.4	75.4	60.9	61.5
144	28.1	40.1	50.7	42.1	58.7	58.0	58.1	41.6	34.2	72.4	72.4	62.8	63.4
145	28.6	44.5	51.7	42.1	58.5	57.4	54.3	41.2	34.6	74.2	74.2	61.7	62.4
146	25.5	49.4	49.7	41.0	56.8	55.2	50.7	41.3	32.2	76.5	76.5	59.5	60.6
147	24.7	44.5	48.5	41.6	56.2	51.5	48.7	41.5	32.0	72.6	72.6	57.7	58.8
148	24.3	44.2	48.7	40.7	57.7	51.8	45.2	41.0	34.7	72.5	72.5	58.2	59.5
149	28.3	42.1	49.5	40.4	58.4	52.9	49.3	40.6	33.4	72.6	72.6	59.2	60.4
150	28.0	45.2	49.1	42.3	57.4	57.0	55.0	41.1	33.1	73.9	73.9	61.1	61.8
151	28.0	46.0	47.2	42.8	56.8	56.2	54.5	42.4	36.2	74.1	74.2	60.5	61.2
152	23.2	47.6	49.9	43.6	58.3	54.5	51.6	41.4	34.7	75.0	75.0	60.2	61.1
153	26.8	40.3	46.8	42.9	57.3	54.7	51.0	40.1	33.0	70.9	70.9	59.4	60.2
154	23.5	46.3	49.4	42.1	58.2	55.9	51.5	45.2	33.7	74.0	74.0	60.3	61.4
155	29.0	43.9	50.6	43.9	57.8	56.9	53.1	42.4	36.1	73.8	73.8	60.7	61.7
156	23.7	47.0	50.2	42.4	58.0	57.1	53.0	40.6	34.4	74.6	74.7	61.2	61.8
157	26.6	45.3	46.3	41.8	57.1	56.6	52.7	42.7	34.0	73.5	73.4	60.5	61.0
158	27.2	43.9	48.4	41.1	55.1	53.9	48.7	43.1	34.2	72.6	72.7	58.0	58.9
159	24.7	43.1	51.7	42.6	60.3	52.6	47.7	42.6	34.5	72.9	72.9	60.4	61.8
160	27.5	48.5	46.1	41.1	58.4	52.3	46.8	43.3	32.7	75.8	75.8	58.8	60.2
161	27.1	40.2	49.1	40.8	55.1	52.2	46.3	39.8	33.9	71.2	71.2	57.0	58.1
162	26.0	42.3	49.3	41.9	59.4	52.6	46.4	45.6	33.8	72.1	72.1	59.6	61.0
163	25.9	44.6	47.0	42.0	57.0	52.3	46.7	42.7	31.8	72.4	72.8	57.9	59.2
164	21.1	40.9	45.9	40.1	56.2	52.6	46.4	41.8	37.0	69.6	69.5	57.6	58.6
165	25.5	42.8	53.8	40.5	59.3	54.3	49.4	47.5	36.3	73.7	73.6	60.8	61.9
166	25.6	38.5	51.6	40.7	56.6	56.1	51.4	41.1	34.2	71.3	71.3	60.1	60.7
167	28.9	42.7	51.0	43.5	58.3	56.4	52.0	46.7	34.8	73.2	73.4	60.8	61.7
168	26.5	37.5	50.9	41.8	56.0	54.9	52.3	39.9	32.5	70.9	71.0	59.5	60.1
169	24.9	42.4	46.6	41.6	56.0	55.7	52.3	41.4	34.1	71.2	71.2	59.5	60.1
170	28.5	43.2	48.6	42.8	56.5	53.0	49.2	41.7	34.7	72.8	72.8	58.2	59.3
171	26.9	41.4	48.1	41.7	58.2	54.6	52.9	40.9	34.7	71.7	71.6	60.0	61.0
172	28.5	43.2	48.4	42.2	57.4	53.6	52.6	41.2	34.8	72.8	72.9	59.3	60.4
173	23.2	47.1	48.1	40.8	58.6	55.1	57.0	40.3	34.0	74.5	74.5	61.4	62.3
174	23.8	38.5	47.4	42.0	56.1	53.5	49.6	42.9	33.0	69.4	69.3	58.2	59.1
175	25.5	42.4	49.8	42.3	56.6	55.7	54.4	40.4	33.6	72.0	72.0	60.1	61.0
176	29.5	48.6	43.7	42.8	57.4	55.7	52.6	41.3	35.0	76.2	76.1	59.9	60.9
177	25.3	42.8	48.6	42.7	57.2	53.9	52.6	45.0	35.5	72.0	71.9	59.5	60.4
178	27.5	43.1	50.9	40.8	56.1	56.7	55.0	40.1	32.2	72.9	73.0	60.7	61.3
179	26.3	46.4	46.5	41.6	58.6	54.6	48.9	39.9	33.0	74.1	74.1	59.6	60.8
180	24.9	41.5	54.8	42.9	58.7	53.2	50.4	40.9	34.8	73.6	73.6	60.2	61.5
181	27.9	40.6	44.7	43.9	59.5	54.6	51.3	41.8	33.9	71.4	71.4	60.4	61.5
182	26.3	42.4	47.1	43.3	58.4	54.6	47.1	39.2	31.7	71.8	71.8	59.5	60.5
183	25.6	48.3	47.5	43.9	57.5	54.2	50.0	41.3	33.8	75.4	75.5	59.2	60.4
184	28.4	40.5	48.0	42.2	58.9	56.0	51.1	40.3	33.6	72.0	71.9	60.4	61.5
185	29.2	45.1	49.0	43.1	58.8	54.9	51.7	40.9	33.6	74.2	74.2	60.4	61.3
186	24.6	45.3	49.5	43.7	59.2	57.4	52.9	40.9	34.5	73.6	73.6	61.5	62.4

Torchère (Bruit à 1 mètre de la torchère mesuré à Saint-Lambert-de-Lauzon) (suite)

	Données de bruit par bande d'octave (dBA)									dB	dB calculé	dBA mesuré	dBA calculé
	31.5 Hz	63.0 Hz	125 Hz	250 Hz	500 Hz	1000 Hz	2000 Hz	4000 Hz	8000 Hz				
187	23.6	44.6	50.2	41.9	59.2	56.2	52.3	40.7	32.4	73.1	73.2	61.0	62.0
188	28.2	48.3	46.2	41.6	57.4	56.7	53.0	40.5	32.4	75.8	75.7	60.5	61.3
189	26.4	41.8	49.4	43.1	58.3	57.0	52.2	40.3	32.0	72.0	72.0	60.9	61.7
190	28.1	38.2	50.6	42.9	58.3	56.2	51.9	40.4	33.0	71.8	71.8	60.6	61.5
191	23.2	39.6	49.6	43.0	59.0	55.8	50.7	41.8	32.0	70.7	70.7	60.7	61.6
192	27.2	38.9	50.7	41.6	56.9	55.0	44.9	42.8	31.8	71.4	71.5	59.2	60.0
193	28.9	42.7	50.3	42.0	58.2	54.6	49.6	42.0	35.8	73.2	73.2	59.9	60.8
194	27.2	36.5	44.8	42.8	57.0	55.5	52.6	40.7	33.2	69.7	69.7	59.6	60.4
195	26.9	40.9	50.3	43.1	56.7	56.1	50.5	41.6	32.6	71.9	71.9	59.7	60.6
196	24.8	43.9	45.7	43.6	59.0	55.9	49.8	39.6	31.9	72.2	72.2	60.4	61.4
197	24.2	42.3	46.5	42.3	58.7	56.5	54.4	40.0	32.5	71.3	71.3	61.0	61.9
198	27.4	38.6	46.9	44.3	57.3	58.4	50.6	40.6	34.8	70.8	70.8	60.8	61.6
199	27.3	38.8	46.6	42.5	58.9	56.8	51.9	40.6	33.0	70.8	70.8	60.9	61.7
200	20.8	44.4	52.4	43.6	58.7	56.3	49.2	41.0	34.4	73.3	73.4	60.5	61.7
201	23.4	40.6	50.9	43.3	56.8	55.1	49.7	41.3	33.0	71.2	71.2	59.2	60.3
202	26.4	43.6	49.1	43.6	58.7	56.4	51.2	41.7	34.6	72.8	72.8	60.7	61.6
203	22.7	43.4	54.7	42.2	58.9	57.2	50.6	42.8	33.1	74.0	74.0	61.5	62.5
204	28.5	45.2	53.1	43.1	58.9	55.1	48.2	41.0	33.0	74.7	74.8	60.4	61.6
205	29.0	42.3	50.4	43.6	57.0	57.4	54.0	40.2	32.9	73.1	73.1	61.0	61.7
206	27.8	48.5	46.8	44.0	58.8	56.9	54.4	40.0	31.9	75.9	75.9	61.4	62.3
207	29.2	42.2	47.3	42.7	59.2	58.0	59.8	42.2	32.6	72.9	72.9	63.5	64.0
208	25.1	40.4	48.2	41.8	59.6	58.8	59.4	42.3	35.1	71.4	71.3	63.8	64.2
209	24.2	50.6	49.9	40.4	55.8	60.5	59.3	42.3	32.5	77.6	77.5	63.9	64.1
210	27.9	41.1	51.8	42.4	58.6	58.0	58.6	44.2	32.0	72.9	73.0	63.0	63.6
211	27.3	42.0	52.4	42.7	58.6	57.0	58.6	41.8	33.5	73.3	73.2	62.6	63.4
212	25.7	45.0	44.2	40.4	57.4	56.6	58.8	42.5	34.3	72.9	73.0	62.3	62.7
213	29.4	39.5	47.5	41.1	57.1	60.4	59.4	41.4	33.8	72.2	72.2	64.0	64.1
214	26.2	45.6	48.8	40.3	56.5	57.3	58.5	41.0	32.5	73.8	73.8	62.1	62.6
215	27.7	39.0	51.3	41.7	56.2	56.5	57.7	41.0	33.2	72.0	72.0	61.7	62.1
216	26.9	42.7	47.4	42.8	56.3	56.2	57.2	42.5	35.9	72.1	72.1	61.2	61.7
217	27.5	46.7	50.3	43.1	55.3	56.1	51.3	40.4	32.2	74.8	74.8	59.3	60.3
218	28.6	45.5	46.8	40.9	55.8	56.6	58.2	41.0	32.9	74.0	74.0	61.7	62.1
219	26.8	44.6	50.1	42.8	56.1	56.5	59.4	42.7	34.6	73.5	73.5	62.3	62.8
220	30.1	41.0	47.2	43.5	58.0	58.1	59.0	42.0	32.2	72.7	72.8	63.0	63.4
221	28.4	48.5	46.5	43.2	56.2	55.7	54.2	41.8	31.8	75.9	75.9	60.1	60.8
222	28.4	46.4	53.2	41.7	60.0	56.0	52.4	41.6	31.3	75.5	75.5	61.5	62.7
223	27.5	46.7	51.3	43.1	56.0	56.0	52.5	39.9	31.3	75.0	75.0	59.9	60.7
224	24.4	42.9	49.9	44.3	57.1	57.4	49.6	39.6	31.6	72.2	72.1	60.5	61.2
225	23.6	44.2	47.4	42.3	57.6	59.2	52.6	46.3	33.2	72.5	72.4	61.8	62.4
226	25.8	47.8	49.9	42.9	55.6	57.2	53.4	42.6	36.0	75.4	75.3	60.7	61.2
227	27.6	38.2	47.3	41.9	58.8	58.4	59.5	41.7	37.3	71.2	71.2	63.5	63.9
228	27.1	42.3	49.1	41.9	58.7	59.2	54.9	38.7	34.5	72.4	72.5	62.5	63.0
229	24.5	41.3	50.0	42.9	58.1	56.0	55.2	40.3	33.9	71.6	71.6	61.0	61.8
230	26.8	42.5	53.3	42.6	58.8	55.4	56.7	49.4	36.1	73.5	73.6	62.2	62.8
231	27.5	45.1	47.4	41.4	56.5	56.6	51.9	41.7	34.8	73.6	73.5	60.1	60.7
232	23.5	39.0	50.8	42.7	58.3	55.1	51.4	43.6	34.9	70.8	70.8	60.2	61.2
233	28.4	40.7	48.5	43.3	58.4	57.5	57.1	40.7	33.8	72.1	72.1	62.1	62.8
234	26.9	45.5	44.5	39.7	56.1	56.8	52.6	40.9	33.8	73.5	73.4	60.1	60.6
235	28.4	47.0	46.9	42.9	55.1	57.7	52.3	42.0	33.1	74.9	74.8	60.5	60.9
236	23.9	44.6	49.2	41.2	56.9	57.1	52.4	46.4	33.0	75.0	72.9	60.8	61.3
237	28.0	43.8	51.4	41.6	59.2	56.0	57.3	40.6	33.3	73.9	73.8	62.0	62.9
238	28.8	44.6	50.2	41.8	57.1	55.8	54.7	40.2	32.5	73.9	73.9	60.5	61.3
239	26.9	47.8	52.3	43.4	57.3	55.6	50.7	43.5	32.8	75.7	75.8	60.1	61.1
240	25.1	45.4	48.7	41.7	58.4	55.1	58.0	40.4	33.0	73.7	73.6	61.7	62.5
241	27.4	43.1	47.4	41.1	58.5	56.1	59.7	40.6	33.7	72.5	72.6	62.7	63.3
242	27.0	46.1	48.3	43.7	57.9	56.2	57.9	40.3	33.3	74.1	74.2	62.0	62.5
243	25.8	41.4	46.4	43.6	57.2	56.7	54.9	40.0	33.9	71.1	71.1	60.8	61.4
244	29.7	37.9	53.0	41.8	57.7	59.7	57.8	40.5	33.7	73.4	73.3	63.4	63.7
245	27.2	47.9	49.9	42.9	58.1	60.7	57.2	43.5	33.8	75.8	75.7	63.7	64.1
246	24.3	44.1	50.2	41.9	56.7	57.0	58.5	41.1	33.4	72.9	72.9	62.1	62.6
247	25.2	36.7	51.9	40.9	57.2	60.1	57.0	40.8	33.6	71.4	71.4	63.2	63.5
248	25.5	49.3	50.7	40.2	57.3	58.1	54.1	41.0	33.8	76.6	76.6	61.6	62.2

Torchère (Bruit à 1 mètre de la torchère mesuré à Saint-Lambert-de-Lauzon) (suite)

Données de bruit par bande d'octave (dBA)													
	31.5 Hz	63.0 Hz	125 Hz	250 Hz	500 Hz	1000 Hz	2000 Hz	4000 Hz	8000 Hz	dB	dB calculé	dBA mesuré	dBA calculé
249	28.5	43.3	53.2	41.9	59.2	58.5	57.4	40.6	33.7	74.3	74.2	63.0	63.7
250	27.3	45.5	47.8	42.0	57.0	58.4	60.4	41.8	35.6	73.9	73.9	63.5	63.8
251	28.5	47.3	48.4	42.2	57.6	58.2	58.9	42.2	36.0	75.2	75.3	62.8	63.4
252	27.0	45.5	45.5	42.0	59.9	53.3	49.4	42.3	36.3	73.6	73.6	60.2	61.4
253	28.0	51.7	50.0	41.2	57.2	56.6	54.5	41.6	36.6	78.7	78.6	61.0	61.9
254	27.7	42.4	48.8	42.2	58.2	53.4	48.4	40.8	34.7	72.3	72.4	59.0	60.3
255	26.4	41.1	49.0	41.5	59.3	54.3	53.6	42.5	35.9	71.7	71.7	60.6	61.7
256	24.6	47.4	51.5	42.1	58.2	54.9	51.9	40.7	34.5	75.3	75.2	60.2	61.3
257	25.1	42.7	47.8	42.4	56.9	53.4	50.7	40.6	33.6	71.7	71.6	58.7	59.7
258	28.2	36.8	47.0	43.1	58.7	53.5	50.5	39.6	33.5	70.8	70.7	59.5	60.7
259	23.5	46.1	48.4	42.5	57.6	55.9	51.3	41.1	35.7	73.8	73.7	60.2	60.9
260	23.7	39.6	47.5	43.1	57.4	53.9	51.4	40.2	33.9	69.9	69.9	59.1	60.1
261	25.4	39.2	49.7	42.7	58.1	54.0	49.7	40.9	34.4	70.7	70.8	59.5	60.5
262	27.4	46.0	47.7	42.8	57.7	54.6	48.3	39.2	33.3	74.2	74.1	59.3	60.3
263	23.4	40.5	52.1	41.3	57.4	53.5	48.0	38.7	32.5	71.6	71.7	59.0	60.1
264	24.4	42.3	53.8	41.3	59.5	51.9	46.6	39.3	33.6	73.1	73.3	59.9	61.4
265	26.4	47.8	49.9	43.1	59.8	51.2	46.5	41.6	36.7	75.5	75.5	59.8	61.2
266	28.0	47.8	53.5	41.9	58.3	52.8	49.0	39.9	33.0	76.1	76.2	59.8	61.0
267	26.8	45.3	47.2	42.2	59.1	53.6	46.5	39.4	33.1	73.6	73.5	59.4	60.8
268	27.7	46.5	48.0	41.9	58.6	53.0	49.5	39.9	33.5	74.5	74.5	59.5	60.6
269	23.5	46.5	45.7	42.7	58.2	53.2	47.8	39.9	33.4	70.8	73.8	59.1	60.2
270	24.2	46.8	50.6	42.4	58.6	52.7	49.4	40.2	34.3	74.6	74.6	59.5	60.8
271	22.4	46.9	50.6	42.8	59.1	52.1	48.3	40.4	34.0	74.5	74.6	59.6	60.9
272	24.3	40.8	50.8	41.9	59.2	53.6	48.3	39.7	33.4	71.6	71.6	59.8	61.1
273	29.7	49.3	51.7	41.4	58.7	56.1	53.4	40.2	33.0	77.0	77.1	61.0	62.1
274	25.8	42.9	46.0	42.7	57.1	53.8	48.1	40.2	33.5	71.7	71.6	58.5	59.6
275	25.9	42.0	51.1	42.7	59.0	53.1	49.8	39.7	33.2	72.4	72.4	59.7	61.0
276	26.1	46.0	46.8	41.3	57.6	53.2	49.3	40.6	34.0	73.7	73.7	58.8	59.9
277	24.6	41.6	47.6	41.7	57.2	54.8	48.1	39.6	32.8	71.0	71.0	58.8	60.0
278	26.9	43.4	50.1	42.1	57.9	53.9	47.8	40.5	33.6	72.9	72.8	59.1	60.3
279	25.8	43.2	48.5	41.4	57.3	55.0	49.1	41.0	34.2	72.0	72.2	59.3	60.2
280	25.9	37.3	49.4	41.8	58.5	56.2	53.2	38.7	35.8	70.6	70.6	61.0	61.6
281	22.1	45.1	49.5	42.3	57.4	53.6	51.1	42.4	36.9	73.0	73.0	59.2	60.3
282	26.7	41.6	51.8	42.0	57.4	56.2	55.5	40.7	35.4	72.6	72.6	61.0	61.8
283	25.2	45.6	51.5	43.4	57.9	53.6	50.9	42.8	37.4	74.0	74.1	59.5	60.8
284	25.7	42.8	51.0	41.8	58.6	54.7	50.4	43.5	38.1	72.5	72.6	59.9	61.2
285	27.5	43.5	46.6	43.5	58.5	55.6	53.5	45.6	36.4	72.3	72.6	60.5	61.5
286	26.5	44.1	47.6	42.4	57.4	53.2	48.2	41.0	34.3	72.6	72.7	58.5	59.7
287	26.0	40.7	46.9	42.5	58.0	52.3	47.7	47.0	39.4	70.8	70.8	58.8	60.0
288	26.1	47.1	47.5	43.8	59.4	55.3	52.3	42.1	35.5	74.7	74.7	60.7	61.9
289	27.9	40.9	52.3	41.1	58.2	54.5	50.0	43.6	33.7	72.8	72.8	59.7	61.0
290	24.8	46.2	54.9	41.8	58.6	53.8	49.0	40.5	33.3	75.5	75.4	60.1	61.5
291	28.7	47.7	51.0	43.0	59.6	54.6	49.6	40.0	33.1	75.8	75.9	60.4	61.8
292	25.1	47.8	54.2	41.4	58.5	52.6	47.5	39.4	33.1	76.0	76.1	59.5	61.1
293	25.6	41.2	53.7	40.9	56.3	53.5	48.7	45.7	39.4	72.9	72.9	58.9	60.1
294	23.1	47.0	52.3	43.1	57.7	54.1	48.9	39.9	33.2	75.1	75.0	59.3	60.7
295	24.8	43.8	51.5	41.0	57.3	52.8	47.8	40.1	33.2	73.1	73.0	58.7	59.9
296	28.3	41.5	48.6	42.2	58.9	54.8	54.8	42.0	33.6	72.3	72.3	60.7	61.8
297	26.5	50.0	47.7	42.8	57.0	54.7	50.6	42.7	33.8	76.9	77.0	59.2	60.5
298	26.3	45.3	48.6	41.8	59.0	54.3	49.1	54.7	38.5	73.6	73.6	61.1	62.0
299	26.1	44.7	47.3	41.7	59.6	57.0	49.9	40.0	33.3	73.1	73.1	61.2	62.1
300	26.9	44.8	50.5	42.2	57.9	54.9	50.7	40.7	34.8	73.5	73.7	59.7	60.9

Bassins d'aération (Bruit mesuré à 20 mètres des bassins à Saint-Lambert-de-Lauzon)

Données de bruit par bande d'octave (dBA)

	31.5 Hz	63.0 Hz	125 Hz	250 Hz	500 Hz	1000 Hz	2000 Hz	4000 Hz	8000 Hz	dB	dB calculées	dBA mesurées	dBA calculées
1	33.5	59.7	64.4	56.7	60.8	61.2	57.9	51.7	42.8	89.4	87.2	69.4	68.7
2	25.6	54.9	63.8	59.1	57.6	61.4	59.0	50.8	39.8	85.6	83.8	69.0	68.1
3	30.6	59.8	63.1	57.7	58.8	60.9	59.1	51.4	41.2	89.0	87.0	68.7	68.2
4	24.1	55.3	63.0	58.4	56.6	60.7	59.0	50.6	40.1	85.7	83.7	68.2	67.5
5	27.7	59.2	61.2	57.8	57.1	59.5	58.9	50.0	40.3	88.2	86.2	67.7	67.0
6	26.4	58.0	64.9	59.7	56.7	60.4	59.3	50.4	40.1	88.0	86.0	69.4	68.6
7	25.8	51.0	65.7	60.9	57.9	61.2	59.7	55.1	40.6	85.4	83.4	69.7	69.2
8	26.6	49.0	65.0	60.0	58.9	61.2	59.1	58.5	41.2	84.5	82.5	70.0	69.0
9	21.7	52.2	60.5	59.3	57.8	61.3	60.3	51.3	40.5	83.0	81.0	68.4	67.2
10	23.7	50.7	62.2	58.1	58.7	61.4	59.3	63.0	42.9	83.1	81.1	70.1	68.7
11	22.2	47.6	69.3	58.6	56.4	61.2	58.7	57.9	41.4	87.8	85.8	71.4	70.9
12	23.8	50.4	67.7	58.6	55.7	61.0	59.6	52.6	41.0	86.7	84.7	70.2	69.8
13	23.6	51.4	65.3	57.8	56.4	61.0	58.5	51.2	40.2	85.1	83.1	69.1	68.2
14	24.9	54.7	58.7	60.9	57.0	61.2	59.7	53.8	40.6	85.0	82.3	68.5	67.2
15	25.9	51.1	61.1	58.3	56.0	60.7	59.1	51.5	40.0	82.7	80.7	68.0	66.7
16	26.4	58.4	59.2	58.2	56.4	61.6	59.9	51.9	40.8	87.2	85.2	68.4	67.2
17	27.2	57.7	63.7	52.7	57.3	61.5	59.7	50.9	40.8	87.5	85.4	68.7	67.9
18	30.3	58.6	68.4	58.2	55.2	60.7	59.5	56.1	40.1	89.8	87.8	70.8	70.5
19	31.8	56.9	61.7	58.2	57.0	61.6	59.8	51.7	40.3	86.6	84.6	68.7	67.6
20	28.6	60.6	60.5	58.5	57.6	61.4	61.4	52.1	41.1	89.3	87.3	69.3	68.2
21	23.5	58.2	64.8	60.9	56.2	62.7	60.3	52.1	42.1	88.2	86.2	70.2	69.3
22	31.9	55.9	69.5	58.5	56.9	62.0	59.0	52.1	41.5	89.4	87.4	71.5	71.2
23	27.7	57.0	65.3	59.4	56.4	62.6	60.3	51.0	41.0	87.7	85.6	70.2	69.2
24	25.2	57.3	65.4	58.6	57.2	62.6	59.6	51.3	41.0	87.8	85.8	69.8	69.1
25	29.1	55.4	60.7	56.6	55.6	61.8	59.8	51.2	41.2	85.2	83.1	68.3	67.0
26	29.2	56.8	63.0	56.7	55.8	61.4	59.8	51.4	41.5	86.7	84.7	69.0	67.6
27	24.5	56.0	60.9	57.1	56.2	61.9	59.5	53.3	40.8	85.6	83.5	68.5	67.2
28	25.9	51.6	66.8	58.7	57.1	61.9	59.5	51.4	40.8	87.2	84.3	70.2	69.4
29	28.6	50.8	71.9	59.2	57.1	61.1	60.3	54.1	40.8	90.4	88.4	73.2	72.9
30	32.8	51.4	66.7	59.1	56.6	61.7	59.5	51.7	40.7	86.3	84.4	70.7	69.4
31	26.9	51.3	65.8	56.4	55.4	61.1	60.9	53.2	40.4	85.4	83.5	69.6	68.7
32	25.1	48.4	63.7	58.0	55.9	61.9	59.4	50.8	40.5	83.3	81.3	69.0	67.8
33	30.8	44.2	64.6	61.9	55.5	61.3	59.7	54.5	41.1	83.7	81.9	69.7	68.7
34	24.4	55.7	65.4	58.4	53.6	62.0	59.9	51.1	40.8	86.9	84.9	69.5	68.7
35	22.3	57.6	64.3	58.3	55.3	61.2	59.2	52.8	41.5	87.6	85.5	68.9	68.2
36	23.3	52.7	62.6	60.3	56.6	61.3	59.2	48.7	40.7	84.2	82.2	68.6	67.6
37	26.6	55.9	61.8	57.4	55.9	60.9	59.1	51.9	41.1	85.7	83.7	68.2	67.0
38	23.8	61.0	61.9	58.7	55.4	60.7	58.8	50.8	40.6	89.8	87.8	68.6	67.8
39	29.9	58.8	66.0	54.7	56.8	61.5	59.1	52.3	41.0	88.9	86.9	69.7	69.0
40	27.9	61.0	65.2	57.9	56.8	62.0	58.9	50.7	40.3	90.3	88.3	69.7	69.1
41	24.5	59.8	65.5	55.9	57.1	61.1	59.9	50.2	40.7	89.4	87.4	69.8	68.9
42	25.2	60.5	64.6	59.1	56.5	61.7	59.6	52.3	40.4	89.8	87.8	69.4	68.9
43	26.4	55.5	61.4	57.7	55.3	61.3	58.8	51.5	40.7	85.4	83.3	68.1	66.9
44	22.1	57.2	65.1	60.4	57.3	62.1	58.7	51.1	40.4	87.6	85.6	70.0	69.0
45	25.6	58.4	66.2	58.3	56.8	61.5	59.2	50.3	40.3	88.8	86.7	70.1	69.2
46	29.7	59.2	67.4	57.9	56.8	62.5	60.0	51.3	40.4	89.7	87.7	70.5	70.1
47	28.8	52.9	67.1	58.5	56.5	61.8	60.1	50.8	40.8	86.8	84.8	70.8	69.6
48	33.1	51.3	63.4	59.3	55.1	61.3	59.3	50.4	40.8	84.4	82.4	68.9	67.7
49	24.3	55.2	61.3	57.3	55.8	61.5	58.7	52.9	40.1	85.1	83.1	68.3	67.0
50	24.4	53.6	62.2	59.7	55.4	60.8	59.6	51.0	40.7	84.4	82.4	68.2	67.3
51	23.6	53.6	70.7	59.8	55.8	61.8	59.6	54.3	41.5	89.7	87.7	72.2	72.0
52	25.9	48.3	67.0	58.6	56.0	61.2	58.7	50.9	40.7	82.9	83.9	70.0	69.2
53	21.7	50.1	70.8	59.3	56.2	61.5	58.7	51.3	40.9	89.4	87.3	72.2	72.0
54	25.5	48.2	69.7	58.7	55.1	60.9	59.2	50.0	40.8	88.3	86.2	71.3	71.0
55	21.6	58.2	66.1	57.7	56.9	60.5	59.3	55.5	40.6	88.6	86.5	69.7	69.1
56	24.4	51.3	61.6	60.2	56.1	61.1	58.5	56.9	40.9	83.1	81.1	68.5	67.4
57	26.2	49.8	61.7	59.8	55.9	60.7	58.4	51.5	40.5	82.6	80.5	67.9	66.9
58	25.0	52.5	59.9	59.3	55.9	61.3	58.2	50.7	40.1	83.1	81.0	67.8	66.6
59	21.6	52.3	62.4	59.2	56.3	60.8	59.2	50.3	40.2	83.9	81.8	68.2	67.3
60	23.3	56.1	67.3	58.5	55.3	61.0	59.7	51.6	40.2	88.1	86.0	70.2	69.6
61	22.2	53.6	67.4	57.7	55.9	60.8	59.4	50.8	40.1	86.9	85.2	70.3	69.5

Bassins d'aération (Bruit mesuré à 20 mètres des bassins à Saint-Lambert-de-Lauzon) (suite)

	Données de bruit par bande d'octave (dBA)										dB calculées	dBAmesurées	dBAcalculées
	31.5 Hz	63.0 Hz	125 Hz	250 Hz	500 Hz	1000 Hz	2000 Hz	4000 Hz	8000 Hz	dB			
62	28.1	55.1	64.9	57.6	55.6	61.2	57.8	50.9	40.6	86.4	84.4	69.2	68.1
63	23.8	56.0	58.4	53.7	63.0	64.1	61.0	52.4	41.9	85.2	83.1	70.4	68.7
64	23.7	52.2	62.5	57.5	64.0	62.0	60.6	51.8	42.1	84.0	81.9	70.9	69.0
65	24.7	59.6	69.3	59.8	63.3	61.0	60.3	52.1	41.4	90.7	88.7	73.0	71.8
66	26.8	61.2	63.0	60.5	62.2	61.2	60.5	52.1	41.3	90.1	88.1	70.8	69.4
67	27.8	57.5	64.4	60.7	62.9	63.4	60.1	51.7	41.6	87.5	85.7	70.9	69.9
68	26.4	61.3	63.4	60.3	62.2	64.4	60.7	52.7	43.0	90.3	88.3	71.1	70.2
69	27.2	54.8	66.0	60.9	63.1	64.2	61.3	53.9	42.5	86.8	84.9	71.8	70.7
70	27.4	57.2	61.7	59.4	63.4	63.1	60.4	52.7	42.5	86.7	84.7	70.3	69.2
71	27.9	58.3	67.0	58.4	63.4	62.8	60.6	53.0	43.6	89.1	87.0	71.3	70.7
72	30.0	52.2	62.7	60.3	64.1	63.2	60.9	51.8	40.5	84.3	82.3	70.6	69.6
73	29.3	51.8	60.1	58.8	65.2	62.7	60.3	52.0	43.4	83.0	81.1	70.7	69.2
74	29.4	58.9	63.2	59.3	65.3	62.6	60.7	51.8	42.7	88.4	86.4	71.2	70.1
75	30.7	54.0	61.4	59.9	65.6	62.6	60.6	51.8	43.8	84.8	82.8	71.0	69.7
76	28.9	62.8	61.6	59.2	64.8	62.5	60.3	51.6	43.4	91.5	89.4	71.0	70.1
77	29.6	55.1	63.9	58.7	65.9	62.6	60.8	51.7	43.2	86.2	84.1	71.2	70.3
78	29.6	56.3	64.7	58.2	65.2	61.9	60.3	52.4	44.3	87.1	85.1	71.1	70.1
79	30.4	65.9	61.4	59.9	64.6	62.8	61.2	51.8	43.1	94.3	92.3	71.6	71.0
80	29.4	51.6	58.3	57.8	64.3	62.8	60.9	51.7	43.3	82.6	80.3	70.1	68.7
81	28.1	52.2	62.9	59.5	65.5	62.7	60.5	52.0	43.8	84.3	82.3	71.0	69.9
82	27.7	63.8	63.0	59.6	63.9	61.4	59.9	51.5	43.0	92.2	90.4	70.8	70.1
83	28.4	56.0	66.4	59.4	64.7	62.6	60.2	51.5	44.0	87.6	85.6	71.4	70.7
84	33.2	56.8	68.3	59.0	64.9	62.6	61.6	51.9	44.0	89.1	87.1	72.5	71.6
85	28.3	57.4	63.9	59.3	64.4	62.0	60.7	51.6	43.6	87.4	85.4	70.8	69.8
86	25.4	58.9	63.1	58.9	65.2	62.0	60.4	52.4	43.4	88.3	86.3	70.8	69.9
87	28.2	61.3	60.2	59.1	64.3	62.3	60.2	51.6	43.7	90.0	88.0	70.4	69.5
88	32.0	54.1	66.1	58.6	66.4	63.0	59.9	52.4	43.7	86.7	84.8	71.7	71.0
89	31.4	51.3	63.4	56.7	65.8	63.1	60.6	52.2	43.7	84.3	82.3	71.2	70.0
90	30.3	61.1	68.5	59.0	64.7	62.8	59.7	51.6	42.7	91.3	89.3	72.5	71.8
91	29.7	63.2	68.9	59.2	64.8	62.6	60.3	51.7	43.5	92.8	90.8	72.8	72.2
92	31.6	58.4	64.6	59.1	64.1	62.6	60.4	52.1	43.2	88.4	86.4	71.1	70.0
93	30.2	62.7	64.9	58.8	65.3	62.2	57.8	52.4	42.6	91.7	89.7	71.5	70.6
94	28.9	53.6	60.6	59.2	64.7	62.6	60.3	51.9	43.0	84.2	82.1	70.4	69.2
95	38.5	52.0	63.1	57.8	62.8	61.8	59.7	51.4	42.3	85.5	83.5	70.4	68.6
96	27.9	61.1	61.8	59.8	64.6	62.3	60.3	51.5	42.7	90.0	87.9	70.7	69.8
97	27.4	59.3	62.8	58.1	65.3	62.1	60.3	52.1	43.8	88.6	86.5	70.8	69.9
98	28.6	53.4	63.2	58.3	65.2	62.9	61.0	52.2	43.2	84.9	83.0	71.2	69.9
99	25.8	56.8	62.4	61.6	60.0	63.5	60.4	52.3	44.3	86.8	84.6	71.0	69.1
100	29.8	59.7	61.0	58.3	64.5	63.6	60.3	52.0	40.5	88.6	86.7	70.8	69.6
101	26.8	55.9	60.2	60.2	64.7	63.6	60.5	52.6	43.4	85.5	83.5	70.8	69.6
102	31.8	62.4	61.3	58.6	65.2	63.8	60.2	52.4	42.9	91.1	89.1	71.2	70.3
103	29.5	60.6	58.8	59.8	66.4	62.9	60.0	52.4	44.1	89.2	87.3	71.1	70.2
104	35.4	60.3	61.6	57.8	64.2	62.8	59.7	51.6	43.5	89.2	87.4	70.6	69.4
105	31.3	52.4	61.1	60.0	64.5	63.2	60.6	52.1	43.8	83.9	81.8	70.5	69.4
106	26.7	62.0	63.9	59.4	64.0	62.8	60.1	52.4	43.1	91.0	88.9	70.9	70.2
107	30.1	59.0	63.0	59.4	65.0	62.2	59.9	52.1	44.3	88.4	86.4	70.7	69.8
108	26.0	56.4	59.5	59.9	65.6	62.7	60.2	52.0	43.0	85.5	83.8	70.7	69.6
109	30.3	66.5	63.8	58.4	64.9	63.1	59.5	51.9	43.4	94.9	93.0	71.7	71.4
110	27.9	56.1	62.8	58.8	64.5	63.2	60.1	51.6	43.3	86.3	84.3	70.8	69.6
111	28.6	59.1	62.5	59.5	64.9	63.0	60.6	51.9	42.5	87.9	86.4	71.0	70.0
112	33.7	64.3	65.9	58.7	65.1	63.6	59.5	51.9	42.7	93.2	91.2	72.1	71.4
113	26.9	54.5	68.1	58.5	64.8	62.4	59.9	52.3	43.0	88.0	86.0	71.8	71.3
114	33.4	58.2	63.0	59.4	64.6	62.8	60.3	52.6	43.0	88.0	85.9	70.8	69.8
115	32.4	62.3	68.7	59.3	65.0	62.9	60.4	52.1	43.6	92.1	90.2	72.7	72.1
116	30.7	56.0	66.4	59.8	64.2	62.6	60.3	52.2	42.8	87.7	85.7	71.5	70.6
117	28.4	55.6	68.0	58.6	65.3	62.1	60.0	51.7	42.4	88.4	86.3	72.5	71.3
118	23.4	60.9	62.3	58.5	64.6	63.4	60.3	52.3	43.3	89.8	87.8	71.0	70.0
119	28.1	58.2	65.3	52.7	65.4	63.6	60.0	51.8	42.9	88.5	86.3	71.5	70.5
120	31.4	60.3	64.3	59.1	64.7	63.2	59.8	52.0	43.8	89.6	87.7	71.3	70.3
121	30.6	55.2	64.6	58.8	64.5	62.5	60.0	51.8	42.2	86.5	84.5	70.9	69.9
122	30.7	60.6	63.0	61.0	65.0	63.5	60.2	51.8	43.1	89.7	87.7	71.5	70.4

Bassins d'aération (Bruit mesuré à 20 mètres des bassins à Saint-Lambert-de-Lauzon) (suite)

	Données de bruit par bande d'octave (dBA)										dB calculées	dBA mesurées	dBA calculées
	31.5 Hz	63.0 Hz	125 Hz	250 Hz	500 Hz	1000 Hz	2000 Hz	4000 Hz	8000 Hz	dB			
123	34.6	54.6	66.1	58.4	64.5	63.2	61.3	52.1	43.4	87.1	85.1	71.7	70.6
124	29.0	60.3	65.4	55.4	64.0	61.1	60.2	54.6	45.5	89.8	87.8	70.7	70.0
125	28.4	52.6	64.3	54.1	62.4	62.1	60.4	54.1	45.4	85.0	83.0	70.3	69.0
126	28.7	60.8	60.5	54.6	62.6	61.1	60.2	54.2	45.3	89.3	87.5	69.7	68.5
127	30.8	53.7	70.3	54.3	62.0	61.8	60.1	54.0	44.7	89.4	87.4	72.3	71.9
128	28.4	59.1	64.9	54.0	61.7	61.5	60.1	54.7	45.1	88.8	86.8	70.1	69.2
129	30.1	59.5	65.7	53.5	62.7	61.3	61.1	54.5	45.5	89.3	87.3	70.8	69.8
130	27.9	59.9	68.0	54.8	62.7	60.5	60.0	54.1	45.4	90.2	88.3	71.3	70.7
131	28.4	52.6	66.1	54.2	63.4	60.9	61.0	54.5	44.8	85.8	84.1	71.2	69.8
132	29.0	53.1	66.6	55.6	61.4	60.9	60.6	54.1	45.8	86.4	84.6	70.5	69.6
133	30.4	64.0	68.6	54.3	62.7	61.7	60.1	53.9	45.5	93.3	91.3	72.2	71.7
134	28.6	60.1	63.4	54.9	62.0	61.2	61.1	53.9	45.1	89.3	87.2	70.1	69.0
135	28.6	56.3	64.2	54.6	62.8	61.2	60.2	54.1	45.3	86.8	84.8	69.9	69.0
136	28.8	63.3	61.4	54.8	63.0	61.0	59.8	54.1	45.3	91.7	89.8	70.0	69.2
137	26.6	61.0	64.5	54.8	62.6	61.9	60.0	54.3	46.0	90.2	88.1	70.2	69.6
138	30.1	60.2	68.8	54.5	62.8	61.4	60.5	54.4	45.4	90.9	88.8	72.2	71.3
139	32.2	61.9	67.2	54.9	61.9	61.3	60.7	53.9	45.2	91.5	89.5	71.2	70.6
140	28.3	59.3	71.7	55.1	61.8	60.0	60.0	53.8	45.1	91.9	89.9	73.4	73.0
141	27.7	58.3	70.0	55.6	62.5	61.6	59.8	54.8	45.8	90.5	88.5	72.5	71.9
142	29.8	63.4	65.6	54.8	63.1	61.5	60.3	53.5	45.3	92.2	90.3	71.2	70.4
143	28.9	60.1	67.0	54.4	62.1	61.7	60.1	53.8	45.7	90.1	88.1	70.8	70.3
144	28.5	60.4	62.1	55.3	63.3	61.3	59.9	54.7	46.0	89.4	87.3	69.7	69.0
145	32.6	60.8	67.5	55.2	62.7	61.0	60.2	54.1	45.9	90.7	88.8	71.3	70.7
146	28.6	59.7	62.1	54.4	61.3	61.7	60.4	54.2	45.7	88.6	86.7	69.5	68.5
147	26.4	59.7	67.5	55.1	62.2	61.4	60.1	54.1	45.5	90.0	88.0	71.0	70.5
148	28.8	60.0	69.4	55.2	62.2	61.5	60.2	54.2	45.7	91.0	89.0	72.1	71.6
149	30.6	50.4	66.4	55.3	61.6	61.7	60.8	54.1	45.8	85.8	83.8	70.3	69.7
150	26.9	62.3	68.3	53.9	62.0	61.2	60.9	53.9	45.6	92.0	90.0	71.7	71.2
151	28.6	58.4	66.4	55.2	61.5	62.1	60.5	54.5	46.2	88.8	86.8	70.9	69.9
152	27.9	54.9	66.3	56.2	61.4	60.0	61.1	54.3	45.4	87.1	85.0	70.7	69.5
153	25.4	61.4	62.8	55.3	61.7	62.7	61.0	54.2	45.3	90.2	88.2	70.3	69.3
154	26.9	60.0	62.8	54.6	62.2	62.4	60.5	54.1	45.8	89.0	87.1	70.1	69.0
155	25.9	51.4	63.0	52.9	61.6	61.8	60.5	54.0	45.4	83.8	81.7	69.5	68.3
156	28.2	66.3	64.7	57.2	61.7	61.2	61.1	54.4	46.1	94.8	92.8	71.2	70.8
157	25.1	54.3	61.3	55.3	61.3	61.7	60.8	54.5	46.0	84.6	82.5	69.4	68.0
158	29.6	54.7	68.5	54.6	62.1	61.8	61.1	54.5	45.6	88.3	86.3	71.8	70.9
159	30.2	63.7	68.1	55.3	61.8	61.3	61.0	54.6	45.9	93.0	91.0	71.7	71.3
160	28.4	60.9	67.3	54.8	61.3	62.0	60.5	54.7	45.6	90.7	88.7	71.3	70.5
161	28.4	56.5	68.7	54.2	62.4	61.5	61.0	54.7	45.7	89.0	87.0	71.7	71.1
162	29.0	60.7	66.0	55.6	62.6	61.9	61.0	54.9	45.8	90.3	88.2	71.0	70.2
163	26.5	50.4	62.5	52.7	63.1	58.0	61.0	54.4	43.9	83.2	81.1	69.9	68.0
164	28.7	56.0	69.3	54.3	63.0	62.1	60.5	54.1	45.2	89.2	87.2	72.0	71.5
165	28.9	60.0	60.2	52.8	62.7	62.3	61.2	54.3	45.4	88.8	86.8	69.8	68.7
166	28.4	51.5	59.7	55.7	62.1	61.7	60.3	53.7	45.1	82.5	80.5	69.0	67.7
167	30.3	53.7	65.3	53.6	61.7	61.6	60.0	53.8	45.2	86.0	84.0	69.8	69.1
168	30.5	56.0	71.0	54.2	61.9	61.6	60.7	54.2	44.9	88.6	86.4	71.1	72.5
169	27.7	57.2	71.4	54.1	62.4	61.8	60.6	54.0	45.2	91.0	89.0	73.5	72.8
170	28.4	55.5	69.4	55.7	63.3	60.0	60.7	53.8	45.1	89.2	87.1	72.6	71.5
171	27.5	54.5	66.0	53.8	62.6	61.4	60.9	54.2	45.3	86.7	84.7	70.9	69.7
172	33.8	59.4	71.8	53.5	61.7	61.9	59.8	54.3	45.2	90.1	90.0	71.4	73.1
173	30.3	60.7	61.7	55.4	61.4	58.0	60.1	53.5	45.4	89.6	87.5	69.4	68.0
174	29.5	54.5	65.5	55.1	61.9	60.0	60.6	53.5	45.2	86.5	84.4	70.1	69.1
175	31.4	51.1	71.9	54.1	61.8	61.4	60.6	53.9	44.4	84.0	88.5	69.7	73.1
176	29.8	59.4	67.2	54.5	61.7	61.1	60.2	53.4	43.9	89.7	87.7	71.0	70.2
177	38.5	58.6	65.6	55.2	58.0	60.9	60.2	53.1	44.5	84.8	87.1	69.1	68.9
178	29.1	55.7	61.9	56.0	60.6	61.2	60.5	54.2	44.4	85.6	83.7	69.1	67.9
179	27.1	60.0	68.2	54.3	62.3	61.6	59.9	54.0	45.6	92.8	88.4	72.0	70.9
180	30.9	58.5	66.7	55.4	61.7	61.5	60.5	54.3	45.3	88.9	87.0	71.1	70.0

Bassins d'aération (Bruit mesuré à 60 mètres des bassins à Saint-Lambert-de-Lauzon)

Données de bruit par bande d'octave (dBA)													
	31.5 Hz	63.0 Hz	125 Hz	250 Hz	500 Hz	1000 Hz	2000 Hz	4000 Hz	8000 Hz	dB	dB calculées	dBA mesurées	dBA calculées
1	18.8	45.1	60.7	51.2	48.1	41.8	44.3	51.7	34.4	79.1	78.0	61.5	62.0
2	17.1	46.8	55.8	50.0	48.7	42.8	44.3	43.4	33.2	76.8	75.7	57.1	58.3
3	17.5	48.9	57.1	49.7	49.3	43.8	44.3	43.1	34.4	78.6	77.4	58.2	59.3
4	14.1	49.5	54.6	49.3	50.5	44.1	44.0	41.0	32.9	78.1	77.0	56.8	58.1
5	17.0	52.6	55.7	48.6	48.8	42.1	43.4	39.6	32.0	80.8	79.6	58.0	58.8
6	20.4	44.1	56.1	49.8	50.8	48.6	45.4	41.2	34.3	75.8	74.7	57.9	58.9
7	14.5	38.7	56.8	53.2	45.8	40.4	42.5	39.5	30.5	74.9	73.9	58.1	58.9
8	13.6	49.8	59.7	53.9	46.4	40.3	40.9	42.8	31.1	80.1	79.0	60.3	61.3
9	17.4	47.5	57.7	51.8	47.9	40.6	41.3	46.4	31.2	77.8	76.9	59.2	59.7
10	19.5	49.8	59.6	52.3	48.5	41.2	42.4	47.8	32.8	80.1	79.0	60.3	61.3
11	17.0	47.6	62.0	53.5	49.2	41.4	42.9	47.0	30.1	80.7	79.6	62.6	63.1
12	17.4	44.6	59.3	50.9	47.9	40.9	43.4	38.2	29.6	77.9	76.8	59.7	60.4
13	18.4	50.0	63.1	51.6	48.7	40.7	42.6	35.1	29.6	82.2	81.0	62.5	63.8
14	19.0	42.9	56.0	51.9	47.5	40.9	41.9	35.5	30.8	75.3	74.2	58.3	58.2
15	19.8	49.0	59.0	51.3	49.1	40.9	42.0	37.4	29.6	79.4	78.3	59.8	60.5
16	20.8	46.5	56.1	50.4	48.1	40.5	42.2	38.8	29.5	76.9	75.7	56.7	58.2
17	17.7	43.8	59.4	52.8	47.9	40.7	42.1	35.6	29.8	77.9	76.8	59.2	60.7
18	16.9	45.9	58.0	51.6	49.6	41.0	42.6	38.5	30.8	77.6	76.4	58.3	59.8
19	17.8	42.0	54.2	52.1	48.4	41.6	43.0	37.8	30.3	74.0	72.8	56.2	57.4
20	21.1	50.0	57.5	51.8	49.8	42.1	43.2	36.4	30.0	79.5	78.3	58.4	59.8
21	16.7	40.7	56.9	51.5	48.3	41.9	43.2	35.8	30.2	75.3	74.2	57.9	58.8
22	18.3	45.3	58.2	50.4	48.9	42.0	43.2	35.1	29.9	77.4	76.3	58.5	59.7
23	19.8	49.3	56.0	51.2	48.6	41.2	43.7	41.3	29.6	78.4	77.3	57.4	58.7
24	18.7	47.9	61.7	50.5	49.4	40.8	43.8	45.9	29.4	80.5	79.4	62.0	62.6
25	15.0	43.1	59.8	51.0	49.3	41.0	44.8	50.4	31.5	78.0	76.9	60.3	61.3
26	17.6	47.9	63.3	50.3	48.7	41.0	43.9	43.0	29.4	81.6	80.6	62.9	63.9
27	19.6	52.5	59.6	51.1	48.6	40.9	43.8	38.9	30.1	81.6	80.5	60.7	61.3
28	19.0	51.9	60.4	51.4	47.8	41.7	43.5	35.3	29.5	81.6	80.5	60.3	61.7
29	19.6	51.5	60.4	49.3	50.0	41.7	43.0	35.3	29.8	81.3	80.2	60.9	61.6
30	18.3	53.3	52.6	49.9	49.8	47.6	45.4	40.5	31.1	81.0	79.9	57.5	58.4
31	17.5	51.6	57.6	49.7	49.3	42.4	44.4	43.4	30.1	80.3	79.3	58.5	59.9
32	19.3	48.0	56.4	50.4	48.9	41.8	45.1	43.5	29.4	77.8	76.6	57.8	58.8
33	18.8	45.5	58.8	50.8	49.7	41.8	44.2	46.9	32.8	77.9	76.8	60.1	60.4
34	15.2	48.0	59.6	51.9	50.4	41.7	44.0	46.2	30.0	79.2	78.1	60.7	61.2
35	20.4	46.0	57.9	50.5	48.6	41.4	43.9	38.8	29.5	77.5	76.4	58.0	59.5
36	18.5	47.9	59.9	48.1	50.9	41.0	43.8	42.0	30.5	79.4	78.3	59.7	61.1
37	16.0	46.4	61.1	49.6	48.8	42.0	44.2	41.1	29.3	79.7	78.6	60.4	61.9
38	18.7	47.6	58.8	50.5	49.4	42.3	43.6	36.5	29.1	78.6	77.5	58.8	60.3
39	15.7	47.1	54.7	49.6	49.2	41.7	43.1	37.1	29.1	76.5	75.4	56.4	57.5
40	18.2	41.4	53.8	48.0	48.4	41.7	42.7	35.7	29.0	73.3	72.2	55.5	56.3
41	17.5	37.9	52.2	50.0	50.9	41.1	41.8	39.3	29.1	71.4	70.3	55.6	56.4
42	21.4	46.7	57.2	49.7	49.5	42.2	41.5	42.8	30.1	77.4	76.3	57.7	59.1
43	15.2	48.2	55.4	49.9	50.2	41.9	41.9	35.5	29.1	77.4	76.3	57.3	58.1
44	16.9	49.2	60.4	49.1	49.6	41.9	41.6	34.9	29.9	80.1	79.1	60.5	61.4
45	15.1	45.3	59.9	48.9	49.3	41.6	41.2	37.4	29.0	78.6	77.4	59.4	60.8
46	17.8	45.9	62.9	49.0	49.4	41.9	41.1	34.4	29.1	81.0	79.9	62.1	63.4
47	14.1	49.3	58.1	50.2	50.6	41.4	41.5	35.7	28.8	79.1	78.0	58.7	59.9
48	19.7	45.4	60.1	49.0	50.9	41.5	42.0	38.2	29.2	78.5	77.6	60.0	61.1
49	18.1	42.3	54.6	50.1	50.0	40.6	40.8	40.4	29.6	74.2	73.1	56.7	57.3
50	18.7	44.4	58.1	50.1	50.0	40.6	40.0	36.0	29.6	77.1	76.0	58.4	59.6
51	17.2	46.8	55.9	47.8	49.4	40.7	40.7	37.1	29.1	76.7	75.7	56.7	57.9
52	19.9	45.7	57.1	49.7	49.8	42.3	37.8	37.8	30.0	76.9	75.8	57.7	58.9
53	17.5	46.7	59.3	50.0	50.0	42.1	41.7	39.0	29.7	78.6	77.5	59.4	60.6
54	17.8	47.0	60.7	50.2	51.0	41.8	41.0	37.1	30.5	79.6	78.5	60.3	61.7
55	17.3	44.9	59.1	49.5	48.6	40.7	39.1	33.5	29.8	77.9	76.7	59.2	60.1
56	18.9	46.8	55.7	49.5	50.4	41.7	39.5	35.7	29.3	76.8	75.6	57.2	58.1
57	18.3	39.9	56.3	49.3	49.6	41.9	40.5	39.6	29.4	74.7	73.6	57.0	58.1
58	18.5	47.3	54.3	51.9	50.0	41.5	41.4	37.0	29.5	76.6	75.5	56.4	57.9
59	16.5	48.4	57.1	50.1	50.1	41.1	41.8	35.9	29.7	78.2	77.1	58.0	59.1
60	18.8	49.5	59.7	49.4	50.8	41.2	42.3	34.8	29.7	79.9	78.9	59.5	61.0
61	18.1	51.5	55.3	50.8	50.5	41.4	43.5	37.5	29.7	79.7	78.7	57.4	58.8

Bassins d'aération (Bruit mesuré à 60 mètres des bassins à Saint-Lambert-de-Lauzon) (suite)

Données de bruit par bande d'octave (dBA)

	31.5 Hz	63.0 Hz	125 Hz	250 Hz	500 Hz	1000 Hz	2000 Hz	4000 Hz	8000 Hz	dB	dB calculées	dBA mesurées	dBA calculées
62	17.5	49.2	53.7	50.1	50.1	42.3	44.0	40.5	30.5	77.6	76.6	56.8	57.6
63	15.1	45.8	56.6	48.7	49.6	41.7	41.8	37.6	29.5	76.6	75.5	57.8	58.4
64	19.4	48.5	57.4	48.7	51.8	41.6	40.7	39.0	30.8	78.5	77.3	58.3	59.5
65	16.9	43.8	55.7	50.7	50.5	42.3	42.6	39.7	30.3	75.4	74.3	57.2	58.3
66	23.3	43.7	55.4	49.0	51.1	42.0	41.7	38.3	29.9	75.4	74.3	57.1	57.9
67	17.7	48.6	54.4	50.0	50.7	42.5	42.4	40.9	31.2	77.4	76.3	57.1	57.9
68	16.2	41.7	63.1	48.5	51.9	44.4	44.5	44.4	34.3	80.7	79.6	62.6	63.7
69	19.1	42.5	62.0	53.3	47.8	42.7	42.2	38.7	29.9	79.7	78.7	61.9	62.8
70	17.2	47.9	61.6	53.2	46.0	42.3	42.1	39.5	31.1	80.5	79.4	61.0	62.6
71	13.2	43.7	59.9	51.8	46.5	42.3	41.6	48.0	32.3	78.2	77.1	60.1	61.1
72	18.1	44.3	55.2	51.5	47.2	42.3	40.7	39.5	29.8	75.3	74.2	57.7	57.7
73	16.0	46.2	56.8	50.0	46.9	41.6	40.1	34.8	29.8	76.9	75.8	57.2	58.4
74	14.5	48.9	58.1	52.6	46.5	40.9	40.1	38.7	29.2	78.9	77.8	58.7	59.9
75	17.2	52.6	61.1	51.5	46.2	42.2	40.0	36.1	29.7	82.3	81.1	60.6	62.3
76	15.9	43.1	57.9	51.3	45.8	42.6	40.5	41.0	29.7	76.5	75.4	58.4	59.3
77	12.9	51.9	60.1	52.7	46.8	41.9	41.2	35.5	29.5	81.4	80.3	60.6	61.6
78	24.1	52.8	61.4	50.7	50.7	43.1	44.0	36.2	30.5	82.6	81.4	61.1	62.7
79	20.0	40.3	57.7	48.9	48.4	43.6	45.2	38.1	31.4	76.0	74.8	57.9	59.1
80	19.8	45.0	58.9	50.9	49.6	42.9	44.7	35.9	29.5	77.8	76.7	59.6	60.3
81	16.5	46.8	53.8	51.4	49.4	42.7	44.1	36.9	29.8	76.1	75.0	56.6	57.5
82	18.6	50.1	58.6	51.4	50.2	41.2	43.8	35.4	29.3	79.8	78.7	59.0	60.5
83	15.3	51.0	61.3	50.5	49.4	41.2	44.7	36.8	29.5	81.5	80.4	60.9	62.4
84	18.6	40.4	60.8	51.8	48.2	41.5	44.3	48.6	30.5	78.5	77.4	61.3	61.9
85	17.0	44.5	60.1	51.4	48.7	41.9	43.6	35.9	29.7	78.6	77.4	59.8	61.2
86	18.8	45.9	60.3	50.9	48.8	41.4	43.6	37.1	29.7	79.0	77.9	60.3	61.3
87	20.0	38.4	56.5	52.3	48.9	40.3	43.5	49.8	29.6	74.8	73.7	59.3	59.2
88	18.7	43.0	54.0	52.0	48.4	41.6	42.7	52.4	29.6	74.3	73.2	58.3	58.5
89	20.6	47.3	55.9	52.0	50.6	41.3	43.7	45.7	29.6	77.2	76.1	58.0	59.0
90	17.8	43.3	57.5	52.2	49.0	41.3	44.0	44.3	30.1	76.4	75.3	58.5	59.5
91	19.9	42.3	62.2	50.0	49.2	41.7	44.0	44.4	29.4	79.9	78.8	62.1	62.9
92	17.4	45.8	61.6	49.3	51.4	40.9	44.1	43.7	30.3	79.9	78.8	61.4	62.5
93	15.0	37.6	59.3	51.5	48.8	40.9	44.2	43.9	29.8	76.9	75.9	59.2	60.6
94	14.9	48.0	61.1	51.9	48.8	41.0	44.0	40.1	30.6	80.1	79.1	61.0	62.1
95	26.7	45.5	53.4	50.9	48.0	41.6	43.4	40.1	29.9	75.7	74.6	56.1	56.9
96	29.5	48.7	55.5	52.2	48.0	40.5	43.4	36.5	29.5	78.5	77.4	57.0	58.4
97	21.4	46.5	58.6	51.0	49.0	40.4	42.7	35.8	29.2	78.2	77.0	58.6	60.0
98	25.5	39.9	61.1	53.1	48.4	40.5	42.5	36.5	29.9	78.8	77.9	60.7	62.1
99	38.2	52.3	59.0	51.8	50.4	41.3	42.1	36.2	29.3	83.1	82.1	59.7	61.0
100	26.1	50.5	60.7	50.4	49.6	40.3	42.7	42.8	29.0	81.0	80.0	61.1	61.9
101	28.5	43.8	57.2	51.4	50.3	40.2	42.3	39.1	29.1	77.0	75.9	58.3	59.2
102	24.3	46.8	57.6	50.3	49.6	40.7	42.8	38.3	28.9	77.7	76.7	59.5	59.3
103	21.7	41.0	57.2	51.7	50.0	42.5	44.8	39.0	29.7	75.6	74.7	58.7	59.3
104	17.8	46.5	57.3	51.7	49.8	42.1	43.4	39.8	29.7	77.4	76.3	59.0	59.4
105	17.4	50.5	58.4	51.3	49.0	40.7	42.3	38.1	29.1	79.9	78.8	58.6	60.2
106	17.0	51.8	54.1	51.0	49.3	40.3	42.9	34.6	29.2	79.9	78.8	57.4	58.2
107	17.3	47.6	62.9	49.5	50.0	42.0	43.8	38.9	29.2	81.3	80.2	62.5	63.5
108	25.8	47.9	59.6	50.5	48.5	41.0	43.3	37.6	29.6	79.4	78.3	59.9	60.8
109	20.0	49.7	59.7	51.2	49.7	40.9	41.6	40.4	29.1	80.0	79.0	60.0	61.1
110	20.3	44.3	53.7	49.8	48.7	41.0	43.6	38.8	30.8	74.4	73.5	57.0	56.8
111	19.2	45.0	51.9	50.7	48.4	40.2	43.0	35.6	29.6	74.5	73.3	55.1	56.1
112	16.5	49.4	57.5	48.5	48.5	40.9	42.5	38.0	29.6	78.9	77.8	57.7	59.2
113	13.7	36.7	56.6	50.1	48.2	40.5	41.2	37.1	29.6	74.5	73.4	57.7	58.2
114	16.3	45.6	59.0	51.2	49.2	42.5	40.9	38.8	29.5	78.0	76.9	60.4	60.4
115	16.3	43.6	63.9	50.9	50.4	42.8	41.3	37.5	29.7	81.6	80.5	62.8	64.4
116	18.3	45.3	59.1	49.7	48.6	42.7	43.5	36.9	29.7	78.0	76.9	59.3	60.3
117	17.5	45.6	61.9	49.8	48.9	42.5	44.2	37.9	30.4	80.1	79.0	61.7	62.6
118	17.4	52.1	56.0	51.0	48.4	41.2	43.4	35.9	30.1	80.4	79.3	57.7	59.0
119	27.1	46.6	58.5	51.3	48.8	40.3	43.2	36.8	30.2	78.3	77.3	59.4	60.0
120	19.3	46.0	54.2	51.2	48.1	43.4	44.7	37.5	30.6	75.8	74.7	56.8	57.5

Soufflante (Bruit mesuré à 1 mètre de la soufflante à l'intérieur du bâtiment à Saint-Lambert-de-Lauzon)

Données de bruit par bande d'octave (dBA)

	31.5 Hz	63.0 Hz	125 Hz	250 Hz	500 Hz	1000 Hz	2000 Hz	4000 Hz	8000 Hz	dB	dB calculées	dBA mesurées	dBA calculées
1	19.9	44.8	53.5	68.1	79.5	81.1	83.6	80.1	76.8	88.5	88.5	88.5	87.8
2	18.8	43.4	52.3	69.3	79.0	81.3	82.8	80.1	77.1	88.3	88.3	88.3	87.5
3	17.5	43.9	51.9	68.3	79.3	82.5	83.8	80.3	77.2	88.8	88.8	89.0	88.3
4	15.1	44.0	52.1	68.4	80.3	81.6	82.9	79.9	77.3	88.7	88.6	88.6	87.8
5	13.4	43.6	53.4	68.7	80.1	82.2	83.4	79.9	78.0	88.9	88.9	88.9	88.2
6	12.8	44.0	53.5	68.6	79.3	81.6	82.9	79.9	77.1	88.4	88.4	88.4	87.6
7	14.2	45.2	52.4	67.7	79.3	81.5	83.9	79.9	77.2	88.5	88.5	88.7	88.0
8	15.4	44.4	52.7	67.3	78.3	81.5	83.6	79.5	76.5	88.1	88.1	88.3	87.6
9	11.6	43.5	51.7	67.8	79.3	82.6	84.0	79.6	77.0	88.7	88.7	88.9	88.2
10	10.8	44.1	53.5	68.5	79.5	82.1	83.8	79.9	77.5	88.7	88.8	88.7	88.1
11	10.7	43.0	53.3	68.9	79.2	81.8	83.7	79.7	76.5	88.6	88.5	88.6	87.9
12	13.4	43.9	52.8	69.0	80.0	81.5	83.9	79.9	76.9	88.8	88.8	88.7	88.1
13	12.7	44.1	52.9	68.9	80.4	81.5	83.2	79.8	77.3	88.7	88.7	88.6	87.9
14	17.9	43.4	52.2	68.0	79.3	82.0	84.0	79.8	77.0	88.6	88.6	88.8	88.1
15	18.4	43.8	52.3	68.0	79.7	81.0	83.6	79.6	77.2	88.4	88.4	88.5	87.8
16	16.9	41.5	53.7	69.3	79.7	82.5	83.6	79.6	76.4	88.8	88.8	88.7	88.1
17	18.0	44.0	53.4	68.3	79.4	81.1	83.5	79.7	76.9	88.4	88.4	88.4	87.7
18	16.5	44.1	50.8	69.1	79.9	82.6	83.7	80.0	77.3	89.0	89.0	88.9	88.3
19	17.6	43.1	51.4	69.7	80.5	81.8	84.0	80.2	77.3	89.1	89.1	89.0	88.3
20	16.6	44.2	49.9	69.1	79.0	81.7	83.8	80.0	77.0	88.6	88.5	88.6	88.0
21	17.4	45.1	52.7	67.3	79.2	81.0	83.5	80.0	76.5	88.2	88.2	88.4	87.7
22	19.2	44.2	51.3	68.2	80.5	81.1	83.8	80.1	77.1	88.2	88.8	88.7	88.1
23	19.2	45.2	50.8	69.2	79.4	81.5	83.5	79.9	77.1	88.6	88.6	88.5	87.9
24	21.3	45.1	51.4	67.9	79.6	81.8	84.0	80.1	76.8	88.7	88.7	88.7	88.1
25	21.0	44.9	51.1	68.1	79.2	82.0	83.7	80.0	76.9	88.6	88.6	88.7	88.0
26	20.9	44.6	49.7	68.1	79.1	82.1	83.6	80.0	76.8	88.5	88.5	88.6	88.0
27	17.4	44.7	51.8	68.6	80.7	81.8	83.3	79.8	77.0	88.9	88.9	88.7	88.0
28	16.1	44.6	52.3	68.9	80.1	82.0	83.6	80.3	76.7	88.8	88.8	88.7	88.1
29	18.9	44.2	50.4	68.1	79.0	81.2	83.6	80.0	76.7	88.3	88.3	88.4	87.7
30	18.2	43.5	50.7	68.7	79.5	81.3	83.3	80.2	77.0	88.4	88.4	88.4	87.8
31	20.1	44.2	51.4	69.3	79.1	81.9	83.4	80.1	77.2	88.6	88.6	88.6	87.9
32	19.7	44.2	50.5	69.0	80.1	81.9	84.0	79.4	76.4	88.8	88.8	88.7	88.1
33	19.5	43.7	50.7	68.4	79.5	81.2	83.3	80.1	76.7	88.4	88.4	88.4	87.7
34	19.8	44.2	51.5	68.0	79.5	80.9	83.3	80.1	76.9	88.3	88.3	88.3	87.7
35	16.8	45.3	50.5	68.6	79.4	81.6	84.4	80.1	76.8	88.7	88.8	88.9	88.2
36	15.1	43.2	50.0	68.7	79.1	81.9	83.5	79.7	76.8	88.4	88.4	88.4	87.8
37	9.5	43.8	50.9	67.6	79.2	82.4	83.9	80.1	76.5	88.7	88.6	88.9	88.2
38	14.1	43.7	49.8	68.5	79.3	81.7	83.6	79.6	77.3	88.5	88.5	88.5	87.9
39	14.6	43.9	51.5	68.2	78.9	81.5	83.5	79.8	77.3	88.3	88.3	88.5	87.8
40	13.4	44.3	50.0	67.2	79.9	81.2	83.6	79.9	77.4	88.5	88.5	88.6	87.9
41	11.8	43.9	50.7	67.8	80.2	81.1	83.1	79.9	77.2	88.5	88.5	88.5	87.7
42	14.1	44.1	51.2	67.2	79.1	81.2	83.7	79.8	76.8	88.3	88.3	88.5	87.8
43	10.6	44.1	49.3	67.5	78.6	81.3	83.2	79.5	76.9	88.0	88.0	88.2	87.5
44	15.3	44.4	50.5	67.7	79.6	81.5	83.7	80.3	77.1	88.5	88.6	88.7	88.0
45	13.6	43.8	49.5	68.3	79.2	80.2	83.9	80.1	77.0	88.3	88.3	88.4	87.7
46	16.6	43.6	51.1	67.5	79.4	81.7	83.8	80.3	76.7	88.5	88.5	88.7	88.0
47	16.2	44.0	49.6	68.7	79.9	81.7	83.7	79.9	77.1	88.7	88.7	88.7	88.0
48	17.6	43.5	50.5	68.1	79.9	81.8	83.6	80.0	77.0	88.7	88.7	88.7	88.0
49	16.0	43.8	49.9	67.9	79.9	81.3	83.3	80.1	77.2	88.5	88.5	88.5	87.8
50	14.5	43.5	49.7	68.2	79.1	81.7	83.9	80.4	76.9	88.5	88.5	88.7	88.1
51	14.9	44.9	49.1	67.7	79.6	81.5	83.8	79.9	76.9	88.5	88.5	88.5	88.0
52	16.9	45.4	48.8	69.4	80.6	81.3	83.0	80.0	77.2	88.7	88.8	88.5	87.9
53	17.2	43.6	50.9	67.1	80.0	81.2	83.4	80.2	76.8	88.5	88.5	88.5	87.8
54	17.1	43.9	48.9	69.3	79.0	81.2	83.6	80.2	76.8	88.5	88.4	88.5	87.8
55	19.0	44.5	50.3	68.1	79.1	81.9	83.6	80.3	76.8	88.5	88.5	88.6	88.0
56	20.8	44.0	49.2	67.7	79.6	81.1	83.4	79.9	77.1	88.4	88.4	88.4	87.7
57	20.3	46.2	50.7	68.0	79.9	82.5	83.7	79.8	76.6	88.9	88.8	88.8	88.2
58	19.2	43.6	48.5	67.6	80.0	81.8	83.3	79.9	76.6	88.6	88.5	88.5	87.9
59	19.1	44.8	48.4	67.8	80.8	81.2	83.4	79.9	76.9	88.7	88.7	88.6	87.9
60	16.5	45.1	49.9	68.2	79.1	81.3	83.3	79.9	77.2	88.4	88.3	88.4	87.7
61	16.8	43.1	50.7	69.1	79.0	81.5	84.0	80.2	77.3	88.6	88.6	88.8	88.1

Soufflante (Bruit mesuré à 1 mètre de la soufflante à l'intérieur du bâtiment à Saint-Lambert-de-Lauzon) (suite)

Données de bruit par bande d'octave (dBA)

	31.5 Hz	63.0 Hz	125 Hz	250 Hz	500 Hz	1000 Hz	2000 Hz	4000 Hz	8000 Hz	dB	dB calculées	dBA mesurées	dBA calculées
62	18.8	43.1	49.7	67.8	79.7	81.4	83.5	79.4	77.0	88.4	88.4	88.5	87.8
63	19.3	45.4	50.4	69.1	80.1	81.9	83.6	79.6	76.7	88.7	88.8	88.7	88.0
64	19.2	44.9	48.5	67.8	79.3	81.5	83.4	79.6	77.3	88.4	88.4	88.4	87.8
65	20.2	44.1	49.1	68.5	79.3	81.6	83.8	79.4	77.4	88.5	88.5	88.6	87.9
66	19.0	42.9	48.6	68.7	79.4	82.0	83.9	79.8	76.7	88.6	88.6	88.7	88.1
67	18.1	44.1	51.2	68.2	79.2	81.5	83.1	80.2	76.9	88.3	88.3	88.4	87.7
68	17.1	43.2	50.8	68.1	78.6	81.9	83.4	80.5	76.5	88.4	88.3	88.5	87.9
69	10.9	43.8	51.4	69.0	78.5	81.1	83.4	79.8	76.7	88.2	88.1	88.2	87.5
70	11.5	45.2	50.6	67.8	79.3	80.8	83.3	80.1	76.8	88.3	88.2	88.4	87.6
71	14.0	45.0	51.2	68.8	79.6	81.8	83.2	80.0	76.7	88.5	88.5	88.4	87.8
72	14.6	44.0	51.3	69.1	79.4	81.6	82.9	80.1	77.4	88.5	88.5	88.4	87.7
73	13.8	43.2	49.9	67.4	79.4	81.3	83.3	80.3	76.7	88.3	88.3	88.4	87.7
74	11.3	44.8	49.7	69.0	79.6	82.0	83.7	79.7	76.8	88.7	88.7	88.7	88.0
75	11.0	45.0	49.9	67.9	79.9	82.0	84.1	79.8	76.6	88.7	88.8	88.9	88.2
76	13.7	43.5	51.2	69.2	80.1	82.3	83.6	79.8	76.5	88.8	88.8	88.8	88.1
77	11.6	43.9	50.7	68.2	79.3	82.4	83.2	80.6	77.2	88.6	88.6	88.7	88.1
78	14.0	44.2	48.7	68.3	79.4	82.0	83.2	80.3	77.3	88.6	88.6	88.6	87.9
79	18.8	44.6	49.4	67.8	78.6	81.6	83.1	80.1	76.7	88.1	88.1	88.3	87.6
80	17.6	44.6	52.1	69.0	78.8	81.9	83.8	79.9	77.0	88.5	88.5	88.6	88.0
81	14.4	43.2	49.7	68.5	79.9	82.8	83.8	79.8	76.5	88.9	88.9	88.9	88.3
82	15.0	44.2	49.0	68.3	79.9	82.7	83.6	80.1	76.9	88.9	88.9	88.9	88.3
83	14.7	45.1	50.1	68.0	78.4	81.6	83.7	79.9	76.8	88.3	88.3	88.5	87.8
84	12.5	45.5	50.1	68.2	79.6	82.0	83.4	80.0	76.9	88.6	88.6	88.6	88.0
85	19.6	44.4	50.6	68.5	79.2	81.5	83.6	80.0	76.9	88.5	88.4	88.5	87.9
86	20.0	44.8	50.4	69.4	80.2	80.9	83.7	79.8	76.9	88.6	88.7	88.5	87.9
87	20.8	44.4	50.7	68.1	79.4	82.1	83.8	80.3	76.8	88.7	88.7	88.8	88.1
88	19.9	45.2	50.3	68.0	79.4	82.6	83.8	80.1	76.9	88.8	88.8	88.9	88.2
89	21.4	44.2	50.1	69.2	80.0	81.7	83.8	79.5	76.4	88.7	88.7	88.7	88.0
90	20.9	44.1	50.2	67.3	80.1	82.2	84.0	79.7	77.4	85.9	88.9	88.9	88.3
91	19.2	45.2	49.4	67.6	78.6	82.5	83.8	79.9	77.2	88.6	88.6	88.8	88.1
92	17.2	45.6	51.1	67.9	79.0	82.1	81.0	80.0	77.4	88.7	88.1	88.9	87.2
93	16.9	44.9	49.4	68.4	79.6	83.2	83.9	80.1	78.0	89.1	89.1	89.2	88.6
94	19.5	45.4	50.2	68.7	79.1	81.3	83.6	80.2	77.5	88.5	88.5	88.6	87.9
95	19.3	44.3	49.7	68.1	79.4	82.4	83.8	80.3	77.5	88.8	88.8	88.9	88.3
96	20.2	44.0	51.3	68.0	79.3	81.9	83.5	79.9	77.2	88.5	88.5	88.6	87.9
97	21.0	45.0	50.2	66.6	78.5	81.8	83.3	80.3	77.7	88.3	88.3	88.5	87.8
98	19.8	44.1	52.2	67.1	78.8	81.9	83.5	80.2	77.4	88.4	88.4	88.6	87.9
99	18.6	44.7	50.7	68.2	78.9	81.4	83.2	79.9	77.1	88.3	88.2	88.3	87.6
100	15.9	44.7	52.7	68.7	79.0	81.6	83.3	79.8	77.2	88.4	88.4	88.5	87.7
101	14.3	44.4	50.7	68.8	78.5	81.5	83.0	79.7	77.8	88.1	88.2	88.2	87.6
102	14.0	44.0	51.6	67.0	78.9	82.3	83.6	79.6	78.1	88.5	88.5	88.7	88.0
103	14.3	44.8	49.8	67.7	79.1	82.3	83.4	79.6	77.2	88.5	88.5	88.6	87.9
104	14.7	44.9	50.2	69.0	79.1	82.6	83.7	79.8	77.3	88.7	88.7	88.8	88.2
105	16.5	44.1	51.0	68.9	79.7	81.9	82.9	79.8	77.4	88.6	88.6	88.4	87.8
106	15.6	45.2	50.4	68.3	79.6	81.4	83.5	79.7	76.8	88.5	88.5	88.4	87.8
107	12.8	44.0	51.9	68.2	79.7	82.2	83.7	80.1	76.8	88.8	88.7	88.8	88.1
108	12.7	44.6	51.0	67.8	79.6	81.2	83.3	80.2	77.3	88.4	88.4	88.5	87.8
109	10.9	44.9	50.8	69.4	79.8	83.2	83.8	79.7	77.1	89.1	89.1	89.0	88.4
110	12.6	44.5	51.0	69.1	79.6	81.5	83.2	79.8	76.7	88.5	88.5	88.4	87.7
111	15.5	44.2	51.9	68.7	78.5	80.8	83.3	79.9	77.0	88.1	88.1	88.2	87.5
112	14.6	44.8	52.6	67.7	78.1	82.1	83.7	80.2	77.1	88.4	88.4	88.5	87.9
113	15.6	41.6	52.0	68.7	79.6	82.0	83.4	80.1	76.9	88.7	88.6	88.6	88.0
114	12.8	45.4	51.5	68.4	78.5	82.1	83.8	79.8	77.3	88.5	88.5	88.7	88.0
115	12.6	44.6	52.4	68.3	79.0	82.1	83.0	80.0	76.9	88.4	88.4	88.4	87.8
116	14.6	45.4	52.0	68.6	79.8	81.3	83.6	80.2	77.0	88.6	88.6	88.6	87.9
117	15.1	45.8	53.3	68.1	79.7	81.9	83.8	79.7	77.5	88.8	88.8	88.7	88.1
118	19.0	45.0	51.1	68.0	79.6	82.1	83.3	79.7	77.5	88.6	88.6	88.7	87.9
119	19.7	45.4	51.4	68.3	79.9	82.3	84.1	80.0	77.3	88.9	89.0	89.0	88.4
120	20.5	44.5	51.6	68.3	76.6	82.6	84.0	79.6	77.2	88.9	88.3	89.0	88.0