






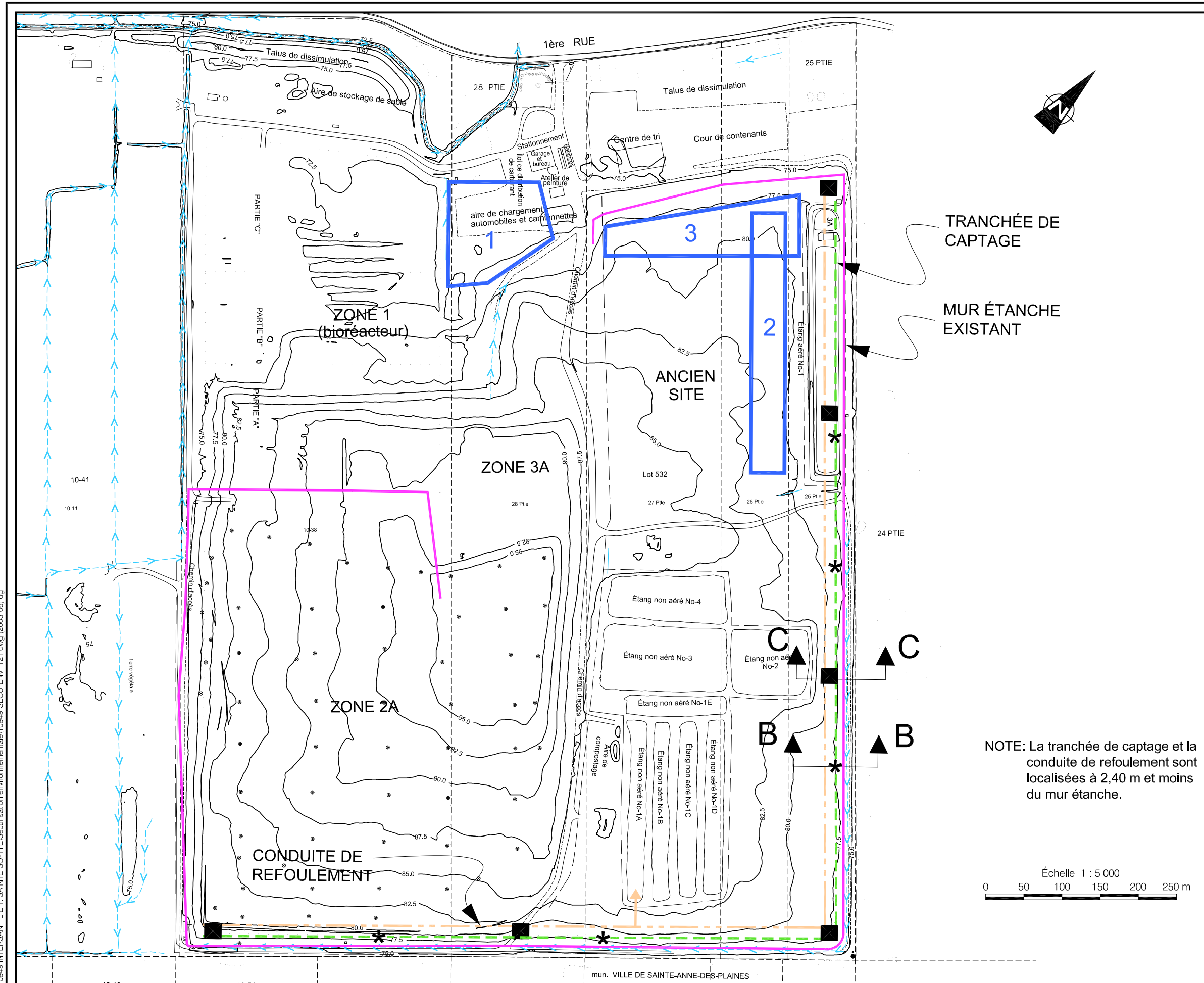


Figure 8.1

PLAN D'AMÉNAGEMENT DU PLAN  
 D'INTERVENTION PROPOSÉ

**LÉGENDE:**

-  Mur étanche
-  Tranchée de captage
-  Conduite de refoulement
-  Puits de biogaz existant
-  Cheminée d'évacuation des biogaz
-  Puits de pompage du lixiviat
-  Emplacement potentiel du bassin d'acculation



TRANCÉE DE  
 CAPTAGE

MUR ÉTANCHE  
 EXISTANT

NOTE: La tranchée de captage et la  
 conduite de refoulement sont  
 localisées à 2,40 m et moins  
 du mur étanche.

Échelle 1 : 5 000  
 0 50 100 150 200 250 m