





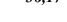


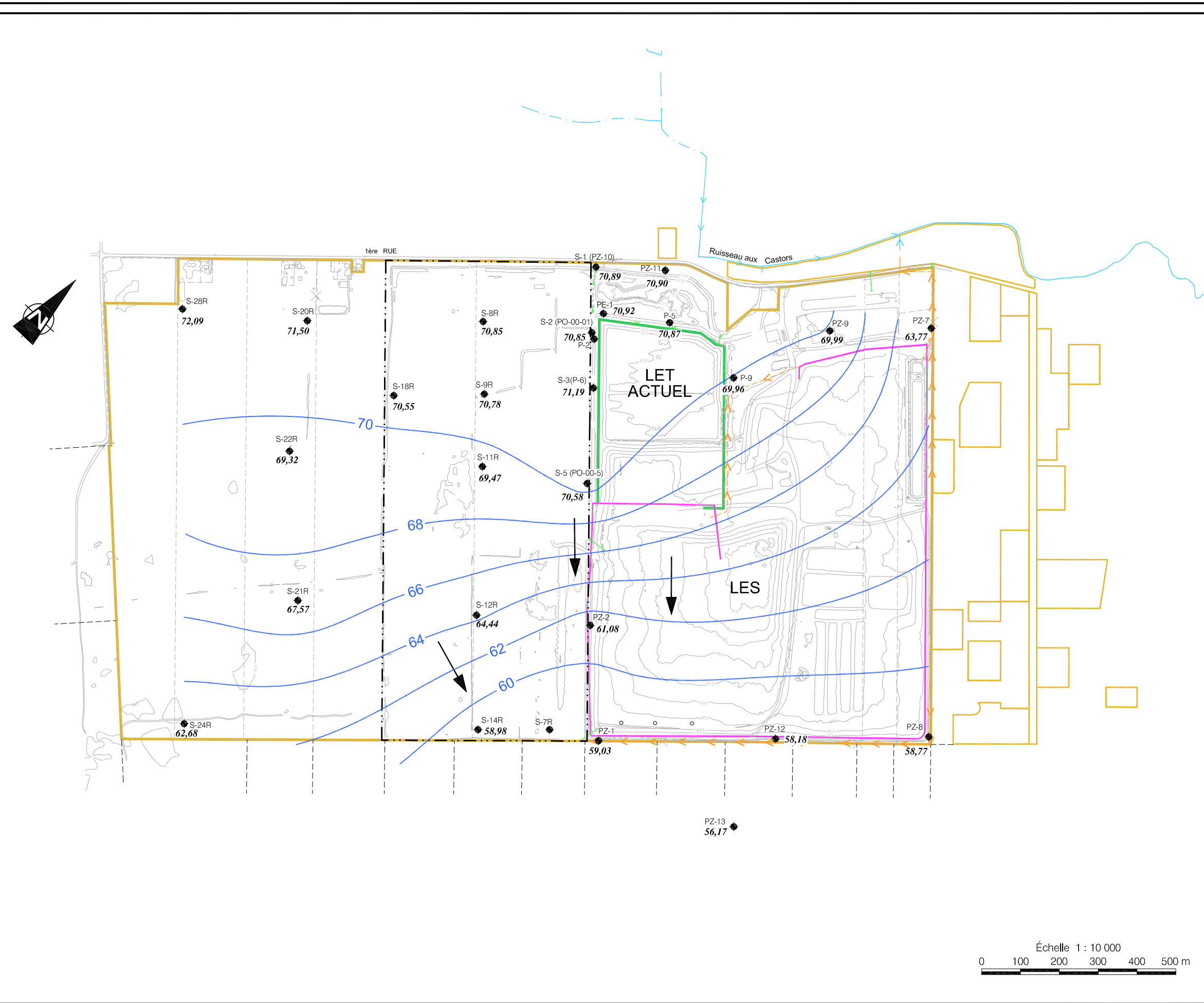


Figure 4.8

PIEZOMÉTRIE LOCALE DE L'AQUIFÈRE DU ROC

LÉGENDE:

-  Propriété d'Intersan
-  Puits d'observation installé dans l'aquifère semi-captif du roc
-  Drain souterrain
-  Mur de sol-bentonite du LES
-  Clé d'argile du LET actuel
-  Courbe isopièze (m)
-  Élévation du niveau d'eau en date du 12 novembre 2002
-  Direction d'écoulement de la nappe semi-captive en date du 12 novembre 2002
-  Zone d'agrandissement projeté



V:\10949 INTERSAN - L.E.T. - SAINTE-SOPHIE\Securisation environnementale\10949-SECU-ENM-108.dwg (2003-04).dgn

Source : Golder Associés inc., décembre 2002 b

N° contrat TECSULT : 05-10949



Avril 2003



Échelle 1 : 10 000
 0 100 200 300 400 500 m