

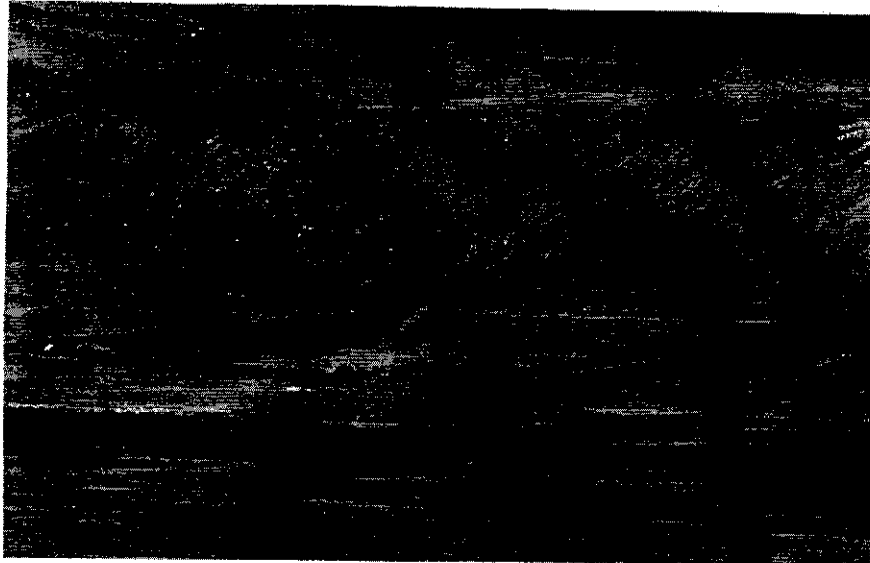
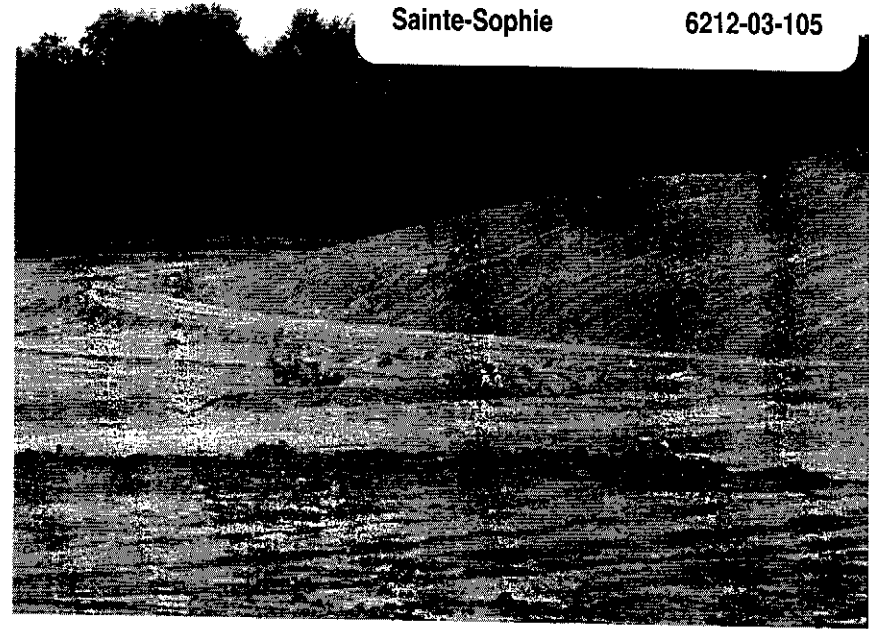
189

DM41.1

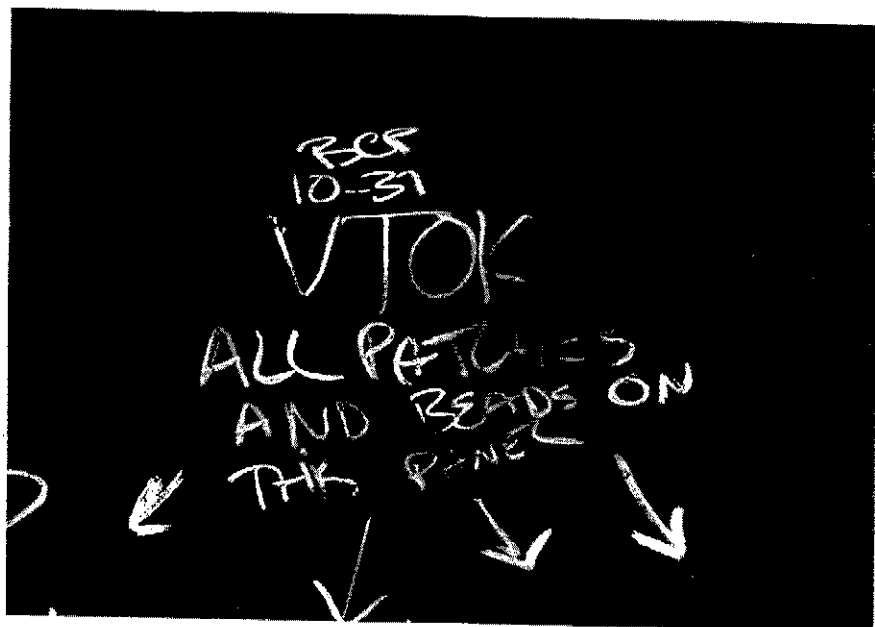
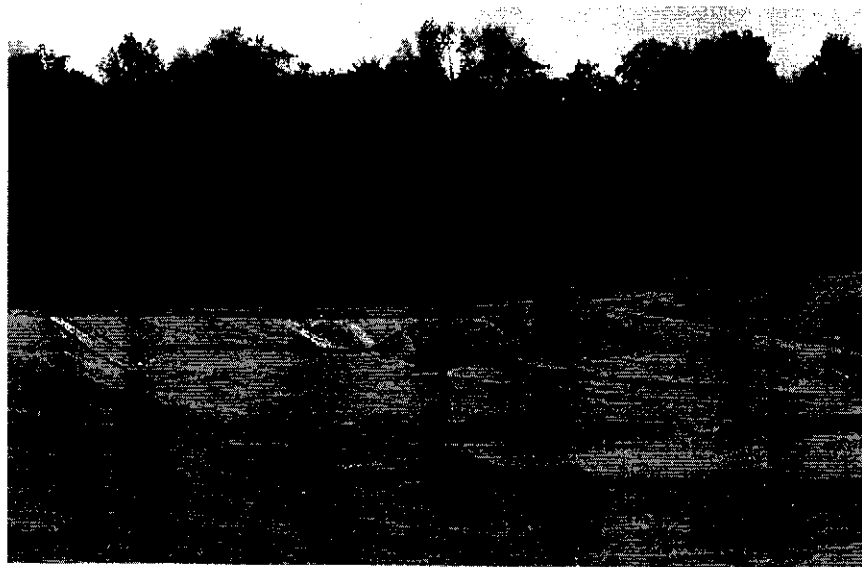
Projet d'agrandissement du lieu  
d'enfouissement sanitaire de Sainte-Sophie

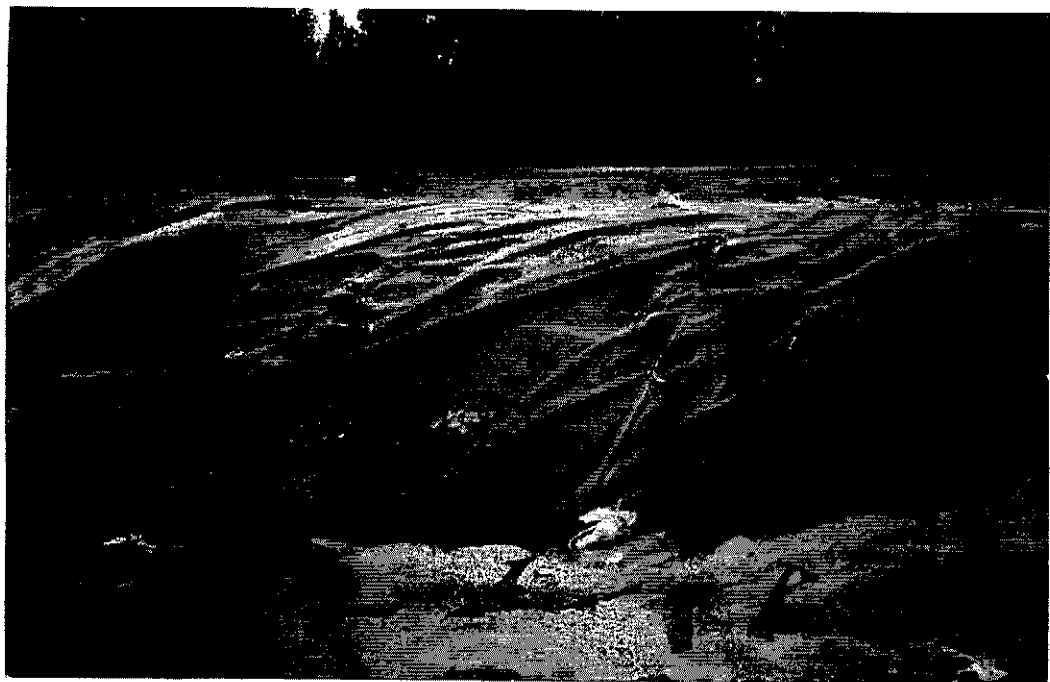
Sainte-Sophie

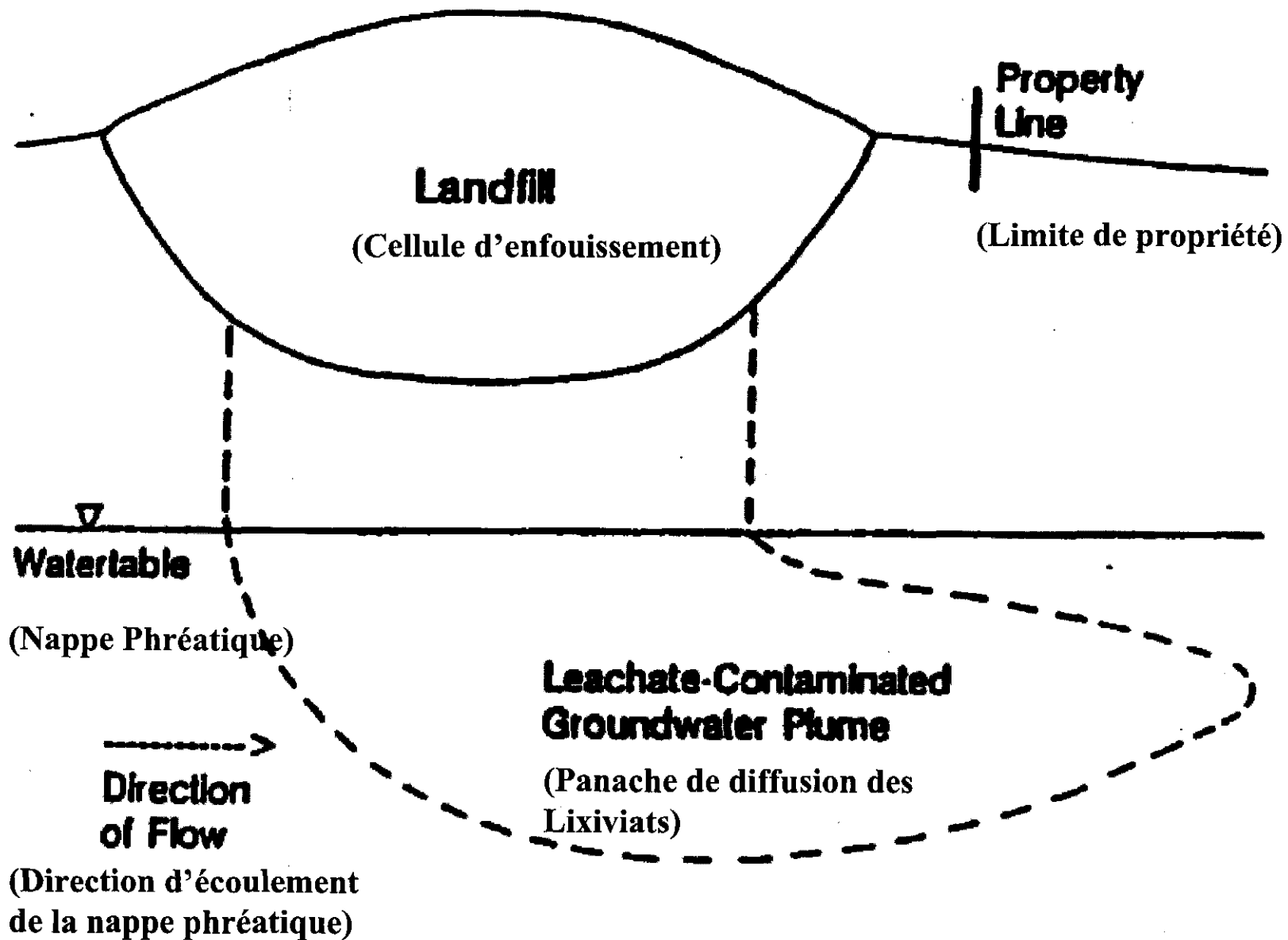
6212-03-105



RCP  
10-31  
VTOK  
ALL PATCHES  
AND BEADS ON  
THIS PANEL

Handwritten notes on a dark background. The text reads "RCP", "10-31", "VTOK", and "ALL PATCHES AND BEADS ON THIS PANEL". There are four white arrows pointing downwards and to the left from the text.





**Source " BACKGROUND DOCUMENT ON BOTTOM LINER PERFORMANCE IN DOUBLE-LINED LANDFILLS AND SURFACE IMPOUNDMENTS. ", Geoservices, Inc., Springfield, VA 22161 (Virginie) : National Technical Information Service. NTIS, Springfield, VA 22161.**

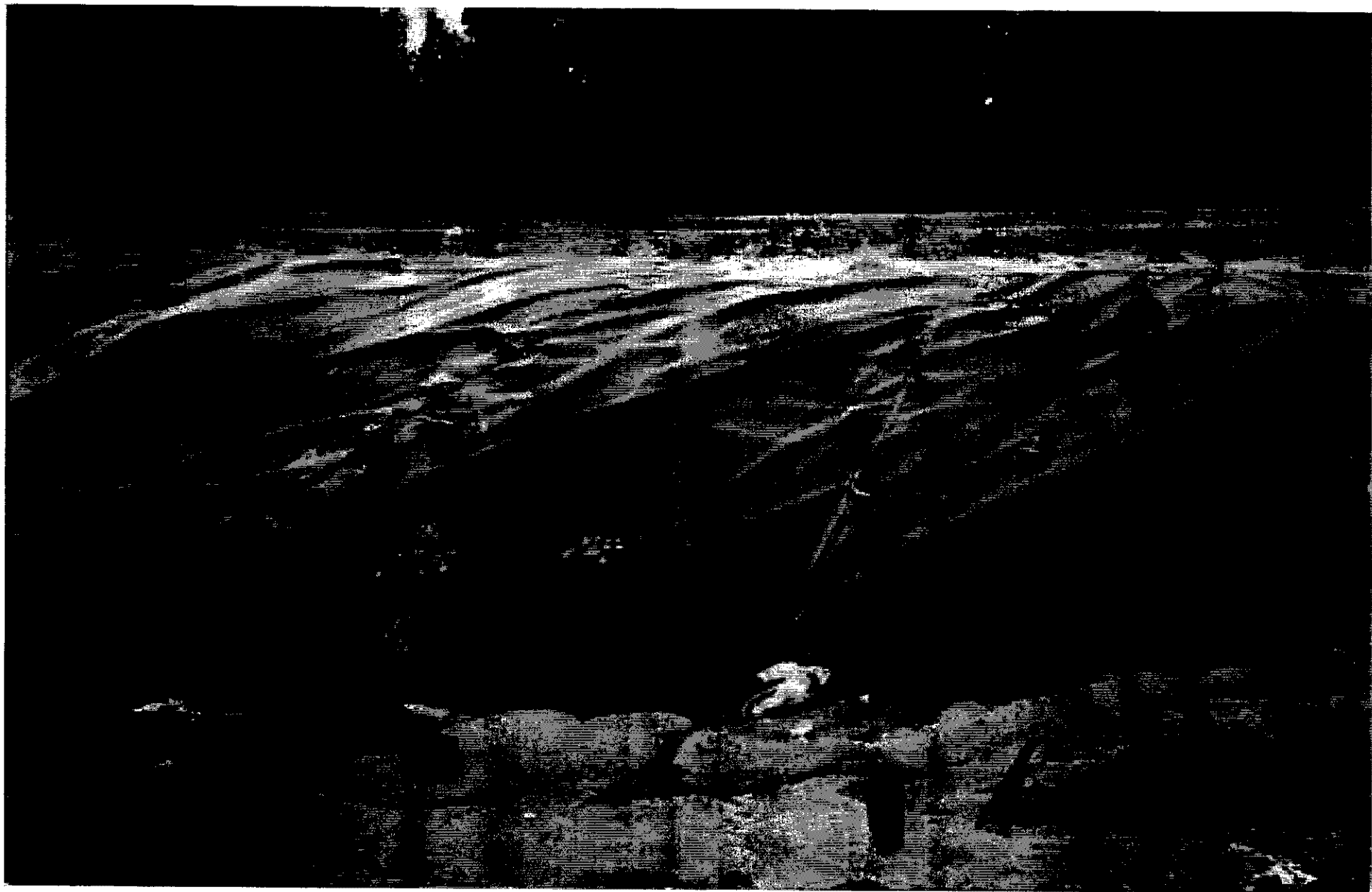
# Site d'enfouissement de Laidlaw

Toledo, Ohio

Septembre 1992













RES  
10-31

VTK

ALL PAGES  
AND READS ON  
THE PANEL

