

1 SYSTEM ALARM TEST PERFORM MONTHLY



Locate Test Source



Potential Risks 3.2

2 SYSTEM ALARM TEST PERFORM MONTHLY

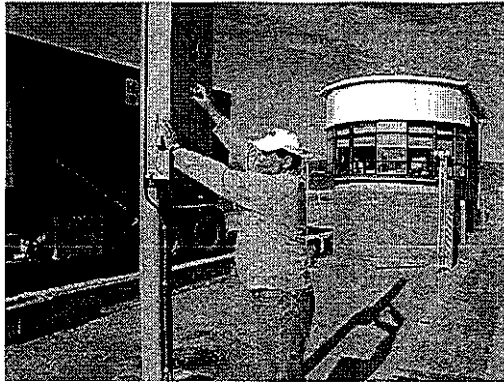


Block Optical Sensor
(this can be done at
either detector) and
count to 3.

Suggestion: Do test
on alternate detectors
each month.

Potential Risks 3.2

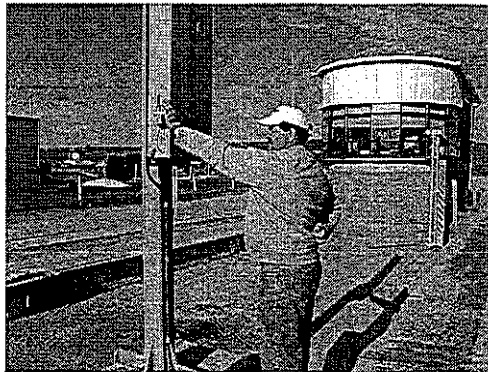
3 SYSTEM ALARM TEST PERFORM MONTHLY



While keeping the optical sensor blocked, Place the test source in the "Source Locating Ring" on the face of the detector and count to 3

Potential Risks 3.2

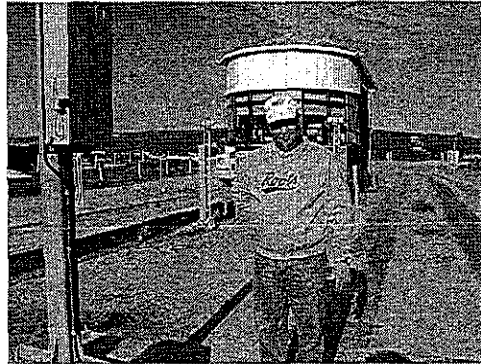
4 SYSTEM ALARM TEST PERFORM MONTHLY



While still blocking the Optical Sensor, Remove the Test Source and count to 3.

Potential Risks 3.2

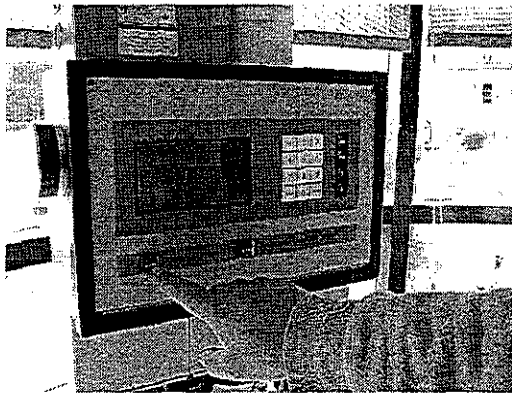
5 SYSTEM ALARM TEST
PERFORM MONTHLY



Uncover Optical
Sensor.

Potential Risk 3.2

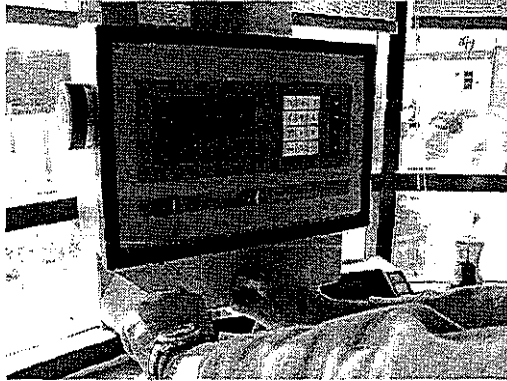
6 SYSTEM ALARM TEST
PERFORM MONTHLY



Press "ALARM"
Button to silence
the Audio

Potential Risk 3.2

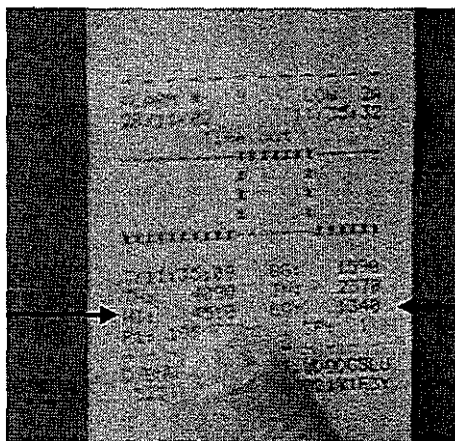
7 SYSTEM ALARM TEST PERFORM MONTHLY



Retrieve Paper
Printout.

Potential Risks 3.2

8 SYSTEM ALARM TEST PERFORM MONTHLY



Using the Printout info,

Hi - BG = SCR
(SCR = Source Reading)

SCR reading to be compared
To previous month's test.
The results should be +/- 20%

Potential Risks 3.2